



## 6th International Multidisciplinary Conference



### ANNOUNCEMENT

CALL FOR PAPERS FOR THE YEAR 2017-2018



### A MULTI-DISCIPLINARY JOURNAL

Science International is a Multi-Disciplinary Journal devoted to all fields of basic and applied sciences. Welcome to constructive criticism, as, *there is always room for improvement.*



### ISI INDEXED

ISSN 1013-5316 : CODEN : SINTE 8  
PUBLISHED BY: Publications International Lahore, Pakistan

## SCIENCE INTERNATIONAL

(LAHORE)

ISSN 1013-5316

ISI INDEXED

Wo S(database Zoological Record )

International Scientific Indexing

Impact Factor = 1.365 (2016)

<http://www.isindexing.com/isi/journaldetails.php?id=7279>

<http://www.isindexing.com/isi/journals.php>

SIF = 0.75 (2014)

<http://scienceimpactfactor.com>

ISC INDEXED

(Clarivate Analytics)

Google Scholar

Abstracted by International Agencies, especially,

CHEMICAL ABSTRACT SERVICE, OHIO, U.S.A.,

[CODEN : SINTE 8],

DEVOTED TO ALL BASIC AND APPLIED SCIENCES

A MULTIDISCIPLINARY JOURNAL

Available in

Unitch Directory

Ebsco

British Library(UK)

## science international

A multidisciplinary, online open access journal, operating independently since July 1988, generating its own sources. Sailing smoothly through the turbulence of time and tide.

[Inviting quality papers for the year 2018.](#)

Service available for conference/seminar research publications as special issues.

## PAYING TRIBUTES TO

### STEPHEN HAWKINGS

## SCIENCE INTERNATIONAL

### OPENS DEBATE

### 'IF TIME SUDDENLY STOPS'

to be published in May-June, 2018, as a

## Latest

### Breaking Through

Researchers have finally created a tool to spot duplicated images across thousands of papers. Publishers would need to join forces to apply image-checking software across the literature. [Find source](#)

Drug-resistant superbug typhoid hit Pakistan. Researchers warn of limited treatment options as mutated strain of typhoid is blamed for surge in cases. [Find source](#)

Description: Research

Mind-reading algorithm reconstructs images based on what we see

A new technique developed by neuroscientists at the University of Toronto Scarborough can, for the first time, reconstruct images of what people perceive based on their brain activity gathered by EEG. [Find source](#)

Transforming patient health care and well-being through lighting

The world of health care is changing rapidly and there is increased interest in the role that light and lighting can play in improving health outcomes for patients and providing healthy work environments for staff, according to many researchers. [Find source](#)

Reprogramming adult cells into induced

## Science International-Lahore

E-ISSN	1013-5316
P-ISSN	1013-5316
Publisher Name	Publications International
Email	sciint.soc@gmail.com
Language	English
Starting Year	1988
Discipline	Multidisciplinary
Frequency	Quaterly
Website	<a href="http://www.sci-int.com">www.sci-int.com</a>
Country	Pakistan
Accessing Method	sciint@gmail.com/00924235865863/00923464784550
Articles Format	PDF
License Type	Normal
Impact Factor	<b>1.365 (2016)</b>
Description	A multidisciplinary, online open access journal, operating independently since July 1988, generating its own sources.Devoted to all basic, applied and social sciences.

Total Visitors to This Page: 12145

### Contact Info:

isiinfo2012@gmail.com  
info@isindexing.com  
submission@isindexing.com

### Get in touch!

### Hits Counter

Total: **2246571**  
Today's: **1647**  
Yesterday's: **8948**  
Your Location  
Indonesia  
ID  
Lampung  
Bandar Lampung  
Bandar Lampung, Lampung, Indonesia

## Master Journal List JOURNAL LIST

Search terms: SCIENCE INTERNATIONAL-LAHORE

Total journals found: 1

### 1. SCIENCE INTERNATIONAL-LAHORE

Quarterly ISSN: 1013-5316

PUBLICATIONS INT, 11-D SABZAZAR, WAHDAT RD, LAHORE, PAKISTAN, 00000

1. [Zoological Record](#)



[Home](#) [Archive](#) [Editorial Board](#) [About Us](#) [Submission GuideLine](#) [Article Inquiry](#) [Ethics](#) [Contact](#)

## 6th International Multidisciplinary Conference



### ANNOUNCEMENT

CALL FOR PAPERS FOR THE YEAR 2017-2018



### A MULTI-DISCIPLINARY JOURNAL

Science International is a Multi-Disciplinary Journal devoted to all fields of basic and applied sciences. Welcome to constructive criticism, as, *there is always room for improvement.*



### ISI INDEXED

ISSN 1013-5316 : CODEN : SINTE 8  
PUBLISHED BY: Publications International Lahore, Pakistan

## SCIENCE INTERNATIONAL

(LAHORE)

ISSN 1013-5316

ISI INDEXED

Wo S(database Zoological Record )

International Scientific Indexing

Impact Factor = 1.365 (2016)

<http://www.isindexing.com/isi/journaldetails.php?id=7279>

<http://www.isindexing.com/isi/journals.php>

SIF = 0.75 (2014)

<http://scienceimpactfactor.com>

ISC INDEXED

(Clarivate Analytics)

Google Scholar

Abstracted by International Agencies, especially,

CHEMICAL ABSTRACT SERVICE, OHIO, U.S.A,

[CODEN : SINTE 8],

DEVOTED TO ALL BASIC AND APPLIED SCIENCES

A MULTIDISCIPLINARY JOURNAL

Available in

Ulrich Directory

Ebsco

British Library(UK)

science international

Latest

### Breaking Through

Researchers have finally created a tool to spot duplicated images across thousands of papers. Publishers would need to join forces to apply image-checking software across the literature. [Find source](#)

Drug-resistant superbug typhoid hit Pakistan. Researchers warn of limited treatment options as mutated strain of typhoid is blamed for surge in cases. [Find source](#)

Description: Research

Mind-reading algorithm reconstructs images based on what we see

A new technique developed by neuroscientists at the University of Toronto Scarborough can, for the first time, reconstruct images of what people perceive based on their brain activity gathered by EEG. [Find source](#)

Transforming patient health care and well-being through lighting

The world of health care is changing rapidly and there is increased interest in the role that light and lighting can play in improving health outcomes for patients and providing healthy work environments for staff, according to many researchers. [Find source](#)

Reprogramming adult cells into induced

PAYING TRIBUTES TO

**STEPHEN HAWKINGS**

SCIENCE INTERNATIONAL

OPENS DEBATE

**'IF TIME SUDDENLY STOPS'**

to be published in May-June, 2018, as a

**6th International Multidisciplinary Conference**

science international

**SCIENCE INTERNATIONAL**

(LAHORE)  
ISSN 1013-5316  
ISI INDEXED  
Wo S(database Zoological Record )

International Scientific Indexing  
Impact Factor = 1.365 (2016)  
<http://www.isindexing.com/isi/journaldetails.php?id=7279>  
<http://www.isindexing.com/isi/journals.php>

SIF = 0.75 (2014)  
<http://scienceimpactfactor.com>

ISC INDEXED  
(Clarivate Analytics)  
Google Scholar  
Abstracted by International Agencies, especially,  
CHEMICAL ABSTRACT SERVICE, OHIO, U.S.A.,  
[CODEN : SINTE 8].  
DEVOTED TO ALL BASIC AND APPLIED SCIENCES  
A MULTIDISCIPLINARY JOURNAL  
Available In  
Ulrich Directory  
Ebaco  
British Library(UK)  
Bibliothek(Germany)  
PA STIC-Pakistan

A multidisciplinary, online open access journal, operating independently since July 1988, generating its own sources. Sailing smoothly through the turbulence of time and tide.

[Inviting quality papers for the year 2018.](#)

Service available for conference/seminar research publications as special issues.

**PAYING TRIBUTES TO  
STEPHEN HAWKINGS  
SCIENCE INTERNATIONAL  
OPENS DEBATE**

**'IF TIME SUDDENLY STOPS'**  
to be published in May-June, 2018, as a  
special issue

**EDITORIAL NOTE.**

Research Terminates at Infinity.

Knowledge has no limits:

Though, research at higher level has assumed immeasurable dimensions with its classification into different fields of study, yet, there are matters of mutual interest to give a comprehensive treatment to the subject under investigation. In surmounting the problems in respective areas of research, one is invariably forced to encroach other disciplines. There are a number of instances of joint ventures, involving scientists from divergent fields of study, to develop consensus to conclude. In the strict sense, research at the top level has resisted to have been colonized or survive in isolation. The alliance of natural, life and social sciences has provided new dimensions leading to a new era of interactions between man and nature. Nature has always been compromising whenever man intellectually approached to share its secrets.

For example,

Study in genetics, has impact on a number of physical and biological sciences.

Research in crystallography is extensively applied by physicists, chemists and chemical engineers etc. alike. Computer simulation is matter of universal interest. Environmental studies has motivated almost all the sectors of science to share responsibilities in the wake of growing pollution.

The kind of forum, thus, contemplated by the science international is aimed at providing common room, from various fields of pure and applied scientists, for direct communication. The cross breeding of ideas certainly helps in the exploration of new avenues in the world of science.

Latest

[Breaking Through](#)

**Researchers have finally created a tool to spot duplicated images across thousands of papers**  
Publishers would need to join forces to apply image-checking software across the literature. [Find source](#)

**Drug-resistant superbug typhoid hit Pakistan**  
Researchers warn of limited treatment options as mutated strain of typhoid is blamed for surge in cases. [Find source](#)

Description: Research

**Mind-reading algorithm reconstructs images based on what we see**

A new technique developed by neuroscientists at the University of Toronto Scarborough can, for the first time, reconstruct images of what people perceive based on their brain activity gathered by EEG. [Find source](#)

**Transforming patient health care and well-being through lighting**

The world of health care is changing rapidly and there is increased interest in the role that light and lighting can play in improving health outcomes for patients and providing healthy work environments for staff, according to many researchers. [Find source](#)

**Reprogramming adult cells into induced pluripotency with unprecedented efficiency**

A team of scientists has reported a more efficient approach to reprogramming a patient's diseased skin cells into stem cells, raising hopes for future clinical trials and potential cures for critical illnesses. [Find source](#)

**Shapeshifting tissue folds into coils & ripples**

Tissues harnessed with programming to create shapes out of living tissues by folding up into variety of programmed tissues. [Find source](#)

**Energy conversion of fats by microneedle patch**

New approach to reduce bulging tummy fats via a microneedle patch, with drugs that turn energy-storing white fat into energy-burning brown fat. [Find source](#)

**Top ten people who mattered this year**

From a gene corrector to an error detector, Nature profiles people who had an impact in science in 2017. [Find source](#)

Description: Research

**Genes in Space-3 identifies unknown microbes**

First-ever sample-to-sequence process entirely aboard the space station. NASA astronaut performed Genes in Space-3 using the miniPCR & MinION. [Find source](#)

**Solution to Type 2 diabetes- Pain free skin patch**

Biochemically formulated patch of dissolvable microneedles devised that interacts in bloodstream to regulate blood sugar. [Find source](#)

## HEC Chairman Should Immediately Resign Over Poor Performance: Federal Academic Staff Association

By Contributors -

Islamabad: Newly elected cabinet of Federation of All Pakistan Universities Academic Staff Association (FAPUASA) has demanded from HEC Chairman Dr. Mukhtar Ahmad to tender resignation immediately over poor performance.

Election of FAPUASA concluded on Sunday where Dr. Kaleemullah Barech from University of Balochistan was elected President, Dr. Muhammad Shoab from UET Lahore was elected Vice president, Dr. Shafeel Farooqi from Karachi University was elected General Secretary, Dr. Raza Ali Khan was elected as Executive Member Engineering and Dr. Hamayun Khan was elected as Ex-Officio member.

**Read Also:** [Going Nowhere: HEC Scholarships for Balochistan](#)

In a joint press statement after election, cabinet of FAPUASA vowed to protect the autonomy of universities in Pakistan. "We demand devolution of Higher Education Commission as per 18th Constitutional Amendment and establishment of provincial HECs for implementation of recent judgment of Lahore High Court.

*We demand devolution of Higher Education Commission as per 18th Constitutional Amendment and establishment of provincial HECs for implementation of recent judgment of Lahore High Court. - FAPUASA*

FAPUASA also demanded to end interference in internal affairs of universities and urged respect for statutory bodies of universities. The press statement also asked the Law Enforcement Agencies to vacate the premises of University of Balochistan.

Earlier, Dr. Fareed Khan was elected as President of Balochistan Chapter, Dr. Shehzad Ashraf (IUI) President of Islamabad Chapter, Dr. Hamayun as President of KPK Chapter, Dr. Javed Ahmad (BZU) as President of Punjab Chapter and Dr. Naimat Ullah Laghari as President of Sindh Chapter.



[Editorial Board](#)



[Submission Guidelines](#)



[Article Inquiry](#)

6th International Multidisciplinary Conference















All Categories

30(2), March-April, 2018, SECTION B
30(2), March-April, 2018 SECTION A
30(1), January-February, 2018 SECTION B
30(1), January-February, 2018 SECTION A
29(8), November-December, 2017, SECTION B
29(8), November-December, 2017, SECTION A
29(5), September-October, 2017, SECTION B
29(5), September-October, 2017, SECTION A
29(4), July-Aug, 2017, SECTION B
29(4), July-Aug, 2017, SECTION A
29(3), 2017, May-June, SECTION B
29(3), 2017, May-June, SECTION A
29(2), 2017, March-April, SECTION B
29(2), 2017, March-April, SECTION A Special Issue
29(2), 2017, March-April, SECTION A
29(1), 2017, January-February, SECTION B, Special Issue.
29(1), 2017, January-February, SECTION B,
29(1), 2017, January-February, SECTION A, Special Issue.
29(1), 2017, January-February, SECTION A
28(8), 2016, November-December, SECTION B
28(8), 2016, November-December, SECTION A
28(5), 2016 September-October, SECTION B,
28(5), 2016-Special Issue,
28-5-2016, September-October, SECTION A
28-4-2016, July-August, SECTION B

Latest Journals

Search: <input type="text"/>					
#	Author	Title	Issue #	Year	Download
4084	Junaid, W;	PREVENTION OF MULTIPLE RUSHING ATTACKS IN MOBILE AD HOC NETWORK USING AODV ROUTING PROTOCOL	(1), 173-177	2018	
4083	Wiwit Suprihatiningsih	ANALYTICAL REPORT ON WATER QUALITY OF RESIDENTIAL AND INDUSTRIAL AREA OF EAST JAKARTA, JAKARTA, INDONESIA	(1), 169-172	2018	
4082	Meike Elsyse Beatrix	ANALYSIS OF WATER QUALITY OF INDUSTRIAL AND RESIDENTIAL DEVELOPMENT AREA IN BOGOR, WEST JAWA, INDONESIA	(1), 159-161	2018	
4079	E.S. Tan	PERFORMANCE EVALUATION OF NON-EDIBLE BIODIESEL AS GAS TURBINE FUEL	(1), 153-157	2018	
4078	Siti Zulaiha Ahamad Azhar	IN VITRO INDUCTION OF ADVENTITIOUS ROOT FROM SHOOT BUD OF BOESENBERGIA ROTUNDA (ZINGIBERACEAE): EFFECT OF PLANT GROWTH REGULATORS	(1), 147-151	2018	
4072	Rozette Estal-Mercado	A FRESHWATER FISH INVENTORY OF DANIANG RIVER, LANUZA, SURIGAO DEL SUR, PHILIPPINES	(1), 141-145	2018	
4070	Asar Khan	RESPONSE OF ZINNIA TO FOLIAR APPLICATION OF BORON AND ZINC	(1),	2018	
4059	Abdul Rahman S. Juma	QUASI-SUBORDINATION CONDITIONS ON BI-UNIVALENT FUNCTIONS INVOLVING HURWITZ-LERCH ZETA FUNCTIONS	(1), 127-131	2018	
4058	Al-Habsi S	HYPOGLYCEMIC AND PROTECTIVE POTENTIALS OF THE EXTRACTS FROM THE AIR-DRIED LEAVES OF CRESCENTIA CUJETE LINN.	(1), 121-125	2018	
4057	Rose Jean M.	BIOSORPTION MECHANISM OF MICROALGAE NANNOCHLOROPSIS OCULATA AND THE EFFECT OF Pb ON ITS PHOTOSYNTHETIC ACTIVITY	(1), 115-119	2018	
4056	Dahlia Khaled Bahlool	THE DYNAMICS ANALYSIS OF A DISEASED PREY-PREDATOR SYSTEM WITH HERD BEHAVIOR	(1), 103-114	2018	
4053	Mohamed A. Munshid	DESIGN AND COMPARISON BETWEEN DIRECT AND EXTERNAL MODULATION OF RADIO OVER FIBER (ROF) COMMUNICATION SYSTEM	(1), 37-43	2018	
4052	Rafida Kh. Ahmed	TOTAL FLAVONOID, PHENOLIC CONTENT AND CYTOTOXIC ACTIVITIES TO STUDY THE COMBINATION EFFECT OF TWO MALAYSIAN MEDICINAL PLANTS	(1), 97-101	2018	
4051	Rafida Kh. Ahmed	TOTAL FLAVONOID, PHENOLIC CONTENT AND CYTOTOXIC ACTIVITIES TO STUDY THE COMBINATION EFFECT OF TWO MALAYSIAN MEDICINAL PLANTS	(1), 97-101	2018	
4050	Rafida Kh. Ahmed	TOTAL FLAVONOID, PHENOLIC CONTENT AND CYTOTOXIC ACTIVITIES TO STUDY THE COMBINATION EFFECT OF TWO MALAYSIAN MEDICINAL PLANTS	(1), 97-101	2018	
4049	E. Yusup	MECHANICAL PROPERTIES OF CaCO <sub>3</sub> EXTRACTED FROM COCKLE SHELL WITH HIGH DENSITY POLYETHYLENE (HDPE) FOR BIOMATERIALS IN BONE SUBSTITUTE APPLICATION	(1), 91-95	2018	
4048	Najib K. Dankadai	PREDICTIVE FUNCTIONAL CONTROL OF TWO CHAMBERS PNEUMATIC SOFT ACTUATOR	(1), 85-90	2018	

6th International Multidisciplinary Conference

28-4-2016, July-August, Special Issue	4047	C. Huang Shen	DESIGN AND IMPLEMENTAION OF A LABORATORY-SCALE PYROLYSIS COMBUSTOR FOR BIOMASS CONVERSION	(1),81-84	2018	
28-4-2016, July-August, SECTION A						
28-3-2016, SPECIAL ISSUE, , MAY-JUNE	4046	Muhd Hazwan Hakim Hisham	ANALYSIS OF THE EFFECT OF MONOMER CONCENTRATION AND GOLD NANOPARTICLES TOWARDS 2-HYDROXYETHYL METHACRYLATE POLYMER GEL USING MAGNETIC RESONANCE IMAGING (MRI)	(1),75-79	2018	
28-3-2016, SECTION B, MAY-JUNE						
28-3-2016, SECTION A, MAY-JUNE	4045	Nur Fawwaz Asri	INTERFACIAL CONTACT RESISTANCE FOR TI-6AL-4V AND SUS 316L PLATES AS BIPOLAR PLATES IN PEMFC	(1),69-74	2018	
28-3-2016, SECTION A, MAY-JUNE	4044	Nur Hanim Mohd Salleh	GENERALIZED PARETO DISTRIBUTION FOR EXTREME TEMPERATURES IN PENINSULAR MALAYSIA	(1),63-67	2018	
Special Issue, 28-2-2016, March-April						
28-2-2016,SECTION B, MARCH-APRIL	4040	Rabah Kellil	SCALING FUZZY TOPOLOGY BY THE UNDERLYING CRISP TOPOLOGY	(1),55-61	2018	
28-2-2016, SECTION A, March-April	4038			(1),49-54		
28-2-2016, SECTION A,						
28-1-2016, SECTION B, Jan-Feb.	4033	Ra'Fat Al-Msie'deen	AUTOMATIC LABELING OF THE OBJECT-ORIENTED SOURCE CODE: THE LOTUS APPROACH	(1),45-48	2018	
28-1-2016, SECTION A, Jan-Feb.	4031	Mohamed A. Murshid	DESIGN AND COMPARISON BETWEEN DIRECT AND EXTERNAL MODULATION OF RADIO OVER FIBER (ROF) COMMUNICATION SYSTEM	(1),37-43	2018	
27-8-2016, SECTION B, Nov.-Dec..						
27-8-2016, SECTION A, Nov.-Dec..	4028	Makram A. Fakhri	OPTICAL INVESTIGATIONS AND OPTICAL CONSTANTS OF NANO SILVER OXIDE PREPARED BY PLD METHOD	(1),33-36	2018	
27-5-2015, Sept.-Oct., SECTION B						
27-5-2015, Sept.-Oct., SECTION A	4027	Raid K. Najj	DYNAMICAL ANALYSIS OF A SCHISTOSOMIASIS TRANSMISSION MODEL OF HUMAN WITH SATURATED TREATMENT FUNCTION	(1),21-32	2018	
Pakistan Association of Anthropology, Islamabad, Pakistan. Special Issue, 27-4-2015	4026	Sadiq Al-Nassir	AN OPTIMAL CONTROL POLICY APPLIED TO DISCRETE TIME MODEL	(1),17-19	2018	
27-4-2015, July--August, SECTION B	4023	Warsono	ANALYSIS OF DYNAMIC STRUCTURE, GRANGER CAUSALITY AND FORECASTING WITH VECTOR AUTOREGRESSION (VAR) MODELS ON CREDIT RISK DATA	(1),7-16	2018	
27-4-2015-July-August-SECTION A						
27(3),2015, May-June,SPECIAL ISSUE	4022	Dian Kurniasari	ESTIMATION OF GENERALIZED GAMMA DISTRIBUTION PARAMETER WITH PROBABILITY WEIGHTED MOMENT METHOD	(1),1-6	2018	
27(3),2015-May-June-SECTION B	3741	Muhammad Abdullah	ASSOCIATION OF VARIOUS MORPHOLOGICAL TRAITS WITH YIELD IN RICE (ORYZA SATIVA L.)	(1)179-182	2018	
27(3),2015-May-June-SECTION A						
Pakistan Association of Anthropology, Islamabad, Pakistan. Special Issue, 27-2-2015						
27-2-2015 SECTION B						
27-2-2015--SECTION A						
Pakistan Association of Anthropology, Islamabad, Pakistan. Special Issue, 27-1-2015						

Showing 1 to 31 of 31 entries



**6th International Multidisciplinary Conference**

27-1-2015-Jan-Feb.
ABSTRACT-26-5-14
26-5- Nov.-Dec.-2014
ISoRIS, 15-16 October 2014, Malacca, Malaysia, Special Issue, 26(4), Sept-Oct, 2014
(ICAPPH-2014)
26-4-2014(Sept-Oct.)
26(3), July-August,2014
26-2-2014
26-1-2014
Special Issue Agile Symposium Malaysia
25-4-13
25-3-2013
24-4-12
24-3-12
24-2-12
24-1-12
25-2-2013
25-1-2013
23-1-11
23-2-11
23-3-11
23-4-11





[Home](#) [Archive](#) [Editorial Board](#) [About Us](#) [Submission GuideLine](#) [Article Inquiry](#) [Ethics](#) [Contact](#)

## 6th International Multidisciplinary Conference

### Editor-in-Chief

Prof. Dr. Muhammad Azam Sheikh

Ph: 092-42-35865863, Cell: 0346-4784550

[sciint15@yahoo.com](mailto:sciint15@yahoo.com), [sciint@gmail.com](mailto:sciint@gmail.com), [sciint15@hotmail.com](mailto:sciint15@hotmail.com)

[www.sci-int.com](http://www.sci-int.com)

### MANAGING EDITORS

Dr. S. Sadaqat Mehdi <a href="mailto:sadaqat_mehdi@yahoo.com">sadaqat_mehdi@yahoo.com</a> Pak.	Dr. Zeeshan Nawaz <a href="mailto:engr.dr.zeeshan@gmail.com">engr.dr.zeeshan@gmail.com</a> Pak.	Dr. Imran Siddique <a href="mailto:imransms_razi@hotmail.com">imransms_razi@hotmail.com</a> Pak.	Dr. Hammad Asghar <a href="mailto:mha_19@yahoo.com">mha_19@yahoo.com</a> Pak.
Dr. M. Adnan Iqbal <a href="mailto:adnan_chem38@yahoo.com">adnan_chem38@yahoo.com</a> Pak.	Dr. Khalida Khan <a href="mailto:director.cimr@pu.edu.pk">director.cimr@pu.edu.pk</a> Pak.	Dr. Imran Ghani <a href="mailto:Imransaeen@gmail.com">Imransaeen@gmail.com</a> Malaysia	Dr. Azram Azram <a href="mailto:azram50@hotmail.com">azram50@hotmail.com</a> UAE.
Dr. Wqas Nazeer <a href="mailto:waqaster@yahoo.co">waqaster@yahoo.co</a> Pak.	Dr. Abdul Waheed Solangi <a href="mailto:awaheed334@yahoo.com">awaheed334@yahoo.com</a> Pak.	Dr. Shah Masaud Khan <a href="mailto:shahmasaudkhan@gmail.com">shahmasaudkhan@gmail.com</a> AJK.	Dr. Ayub Khan <a href="mailto:drayubkhanhu@gmail.com">drayubkhanhu@gmail.com</a> AJK.
Dr. Arunima Purkayastha <a href="mailto:arunima@ucla.edu">arunima@ucla.edu</a> U. S. A	Alireza Heidari <a href="mailto:Scholar.Researcher.scientist@gmail.com">Scholar.Researcher.scientist@gmail.com</a> U. S. A	Prof. Dr. Farooq Ahmad Gujar <a href="mailto:farooqgujar@gmail.com">farooqgujar@gmail.com</a> Pak.	Sergei A. Ostroumov <a href="mailto:ar55@yandex.ru">ar55@yandex.ru</a> Russia
Dr. Muawwar Iqbal <a href="mailto:muawwariq@gmail.com">muawwariq@gmail.com</a> Pak.	Dr. Osamah Ibrahim <a href="mailto:usama81818@gmail.co">usama81818@gmail.co</a> Iraq		

**6th International Multidisciplinary Conference**

Editorial Board

Physical &

Mathematical

Sciences

M. Qaiser Shahbaz

M Arif Rafique

Wali Khan Mashwani

Shahzad Naseem

Abdul Aziz Gill

Manzoor Iqbal

Khattak

M. Sarwar

Inam ul Haque

Muhammad Hussain

Talib Hussain

M. Akram Javed

Hakeem ullah Jan

M. Farhan Tabassum

Engineering &

Applied Sciences

Anmanullah

Siraj-ul-Islam Ahmad

Muhammad Junaid

Khan

Amir Ferhan Rafique

Shaheen Aziz

Usman Ali Naem

Fayaz Hussain

Muhammad Akram

Sheikh

Awais Khatri

Biological Sciences

M. Umar Dahot.

M. Yunus

Muhammad Ashfaq

Shahida Hasnain (Malaysia)

botany.pu.edu.pk Q.Y. Zhu (China)

Anjum Nasim Sabri J. X. Ran (China)

Farhat Nazir Awan Qing Shu (China)

Zafar Iqbal

Khaild Hazeen

Tooba Zaman

Syed Waseem.

Hassan

Muhammad A. Tahir,  
(U.S.A.)

M. Akhtar (England)

Rose A. Haque

(Malaysia)

Q.Y. Zhu (China)

J. X. Ran (China)

Qing Shu (China)

S. A. Tariq. (Australia)

Zhu Wan Cheng

(China)

Saleem Mustafa (Malaysia)

Murtaza Mustafa

(Malaysia)

Overseas Panel

Mohammad Israr (India)

Sanjeevikumar

Padmanaban

(India)

Kashif Sagheer (U.A.E).

A. Burkan udeen (India)

Sergai Borisonik Russia

RABIN HANDRA

PARAMANIK

(India)

Atun Roy Choudhury

(India)

Social Sciences

LOCAL

Dr. Abdusattar Abbasi [drabdussattar@ciitlahore.edu.pk](mailto:drabdussattar@ciitlahore.edu.pk)

Dr. Abdul Ghafoor Awan [drabdulghafoorawan@gmail.com](mailto:drabdulghafoorawan@gmail.com)

Dr. Zafar Iqbal [drzriqbal@gmail.com](mailto:drzriqbal@gmail.com)

Dr. Nazir Ahmad Mali [nazir.malik@gmail.com](mailto:nazir.malik@gmail.com)

Dr. Fozia Fatima [fatimafozia@yahoo.com](mailto:fatimafozia@yahoo.com)

Dr. Sabir Ali [dr\\_sabir@outlook.com](mailto:dr_sabir@outlook.com)

Dr. Abdullaha Raza <https://www.linkedin.com/in/abdu>

Sadaf Naveed <https://www.linkedin.com/in/sadaf-naveed>

## 6th International Multidisciplinary Conference

### FOREIGN

Dr. Daisy Kee Mui Hung	<a href="mailto:daisy@usm.my">daisy@usm.my</a>	Malaysia
Dr. Nawab Ali Khan	<a href="mailto:n.khan@sau.edu.sa">n.khan@sau.edu.sa</a>	India
Dr. Khaliq Ahmad	<a href="mailto:khaliqahmad@iium.edu.my">khaliqahmad@iium.edu.my</a>	Malaysia
Prof. Farooq Khan	<a href="mailto:farooq.khan@aurak.ae">farooq.khan@aurak.ae</a>	United Arab Emirates
Prof. Shiv K. Tripathi	<a href="mailto:sktripathi@mzumbe.ac.tz">sktripathi@mzumbe.ac.tz</a>	Tanzania
Prof. M-Said Abdul-Rahman Oukil	<a href="mailto:oukil@kfupm.edu.s">oukil@kfupm.edu.s</a>	KSA
Dr. Mohd. Talha	<a href="mailto:talha@kfupm.edu.sa">talha@kfupm.edu.sa</a>	KSA
Prof. Z. U. Khairoowala	<a href="mailto:z_khairoowala@yahoo.com">z_khairoowala@yahoo.com</a>	India
Prof. H.H.D.N.P. Opatha	<a href="mailto:hopatha@yahoo.com">hopatha@yahoo.com</a>	Srilanka
Prof. H. K. Singh	<a href="mailto:hksinghmeera@yahoo.co.in">hksinghmeera@yahoo.co.in</a>	India
Prof. Z. U. Khairoowala	<a href="mailto:z_khairoowala@yahoo.com">z_khairoowala@yahoo.com</a>	India
Prof. Muhammad Ahsan (FRSA)	<a href="mailto:mohammad.ahsan@iou.edu.gm">mohammad.ahsan@iou.edu.gm</a>	The United Kingdom
Dr. Kusum Yadav	<a href="mailto:kusumasyadav0@gmail.com">kusumasyadav0@gmail.com</a>	KSA

### COMMUNICATION & COORDINATION

Aneela Sheikh [sciint.soc@gmail.com](mailto:sciint.soc@gmail.com)  
 Dr. Munwar Iqbal [munwariq@gmail.com](mailto:munwariq@gmail.com)

### LIASION

Dr. Hammad Asghar [mha\\_19@yahoo.com](mailto:mha_19@yahoo.com)  
 Abdul Khaliq Alvi [khalialvi@gmail.com](mailto:khalialvi@gmail.com)  
 M. Adnan Iqbal [adnan\\_chem38@yahoo.com](mailto:adnan_chem38@yahoo.com)  
 M. Farhan Tabassum [farhanuet12@gmail.com](mailto:farhanuet12@gmail.com)  
 Salman Fakhar: [salman.fakhar@ee.uol.edu.pk](mailto:salman.fakhar@ee.uol.edu.pk)  
 Muhammad Umair Shahid: [mohammadumair98@hotmail.com](mailto:mohammadumair98@hotmail.com)  
 Yasir Mehmood: [yasirmehmood2@hotmail.com](mailto:yasirmehmood2@hotmail.com)  
 Muhammad Mooneeb Ali: [mooneebali@hotmail.com](mailto:mooneebali@hotmail.com)  
 MUhammad Affan Khan [makhan8809@gmail.com](mailto:makhan8809@gmail.com)

## 6th International Multidisciplinary Conference

History of the journal stems back to July 1988 when

*"The Science International (Lahore)"*

was commissioned in the fleet of international scientific publications. It is a broad based BIMONTHLY journal (refereed), devoted to all basic and applied sciences committed to serve the world of science. In its purview are research papers, reviews, short communications, articles and research reports from the largest spectrum of research subjects. The publication of no less than 5000 research papers go to its credit, till day. Ever since it came into being, it has the privilege of having been indexed by the Internationally recognized agencies for the promotion of research publications namely,

INTERNATIONAL SERIAL DATA SYSTEM (ISDS) in Paris, France [ISSN 1013-5316], cited widely and abstracted by international agencies, especially, by CHEMICAL ABSTRACT SERVICE, OHIO, U.S.A. [CODEN : SINTE 8],

WoS-BIOSIS (data base Zoological Record), Ulrich Directory and PASTIC; Pakistan.

The journal accepts genuine contributions from authors all over the world in pure and applied sciences especially,

MATH, PHYSICS, CHEMISTRY, BIOCHEMISTRY, MOLECULAR BIOLOGY, MICROBIOLOGY, BOTANY, ZOOLOGY, PHARMACY, INFORMATION TECHNOLOGY, BIOTECHNOLOGY, FORENSIC SCIENCES, AGRICULTURE, VETERINARY SCIENCES, FOOD SCIENCES, ENGINEERING, MATHEMATICS, STATISTICS AND MEDICAL SCIENCE.

**SECTION FOR SOCIAL SCIENCES HAS BEEN INTRODUCED.**

Generating our own resources we remain committed to serve the world of science in general to the best of our capacity and dedication.

In addition to the normal functioning, research related activities go to its credit, the synopsis of which are given below:

### RESEARCH ORIENTED ACTIVITIES

#### SYNOPSIS

#### 25 YEARS SERVICE OF "SCIENCE INTERNATIONAL"(Lahore) TO THE WORLD OF SCIENCE

It is the first journal ever emerged from private sector in the history of Pakistan generating its own funds to cater its needs.

In addition to its normal functioning, it remains committed to promoting scientific culture, creative activities and talent hunting in the country and abroad, by organizing science conferences, seminars, popular lectures, symposia etc. in the country and abroad; largely attended by the elite from universities and research organizations.

#### SCIENCE CONFERENCE SERIES

##### IN COLLABORATION WITH UNIVERSITIES AND RESEARCH ORGANISATIONS

1- All Pakistan Science Conference, 16-21 May, 1992, Khanspur.

Opening: Dr. I. H. Qureshi, Member Tech., Pakistan Atomic Energy Commission (on behalf of the Chairman, (PAEC).

Closing: Syed Fakhar Imam, Minister of Education, Government of Pakistan.

115 papers presented; proceedings published.

2. 2nd All Pakistan Science Conference, 26 - 30 December, 1993, Aitchison College, Lahore.

Pakistan

Closing: Syed Babar Ali, Minister of Finance (former), Government of Pakistan.

110 papers presented; proceedings published.

3. 3rd All Pakistan Science Conference, 11-15 September, 1994, Bara Gali.

Closing: Dr. Khalid Farooq (Chief Scientific Officer), PCSIR, Lahore.

Chief Guest: Mudassar Tabassum, Italy.

4. 4th All Pakistan Science Conference, 26 - 30 December, 1995, University of Agriculture, Faisalabad.

Opening: Dr. Anwarul Haq, Vice Chancellor, University of Agriculture, Faisalabad.

Closing: Dr. Anwarul Haq, Vice Chancellor, University of Agriculture, Faisalabad.

105 papers presented; published.

5. 5th All Pakistan Science Conference, 15 - 19 Sept., 1996 at University College of Agriculture, Rawalakot (AJ&K).

Opening: Sardar Muhammad Ibrahim, President, Azad Kashmir.

Closing: Dr. Khalid Mahmood Khan, Chairman, Pakistan Science Foundation.

130 papers presented.

## 6th International Multidisciplinary Conference

6. 6th All Pakistan Science Conference, 3- 6 November, 1997 at NWFP Agriculture University, Peshawar.

Opening: Minister of Education, NWFP.

120 papers presented.

Closing: Vice Chancellor, NWFP, University of Agriculture,

1 . 1st "International Science Conference", in collaboration with the Faculty of Science and Environmental studies, University Putra Malaysia,(UPM), Malaysia, 7- 9 May, 1998.

Opening: The Deputy Minister, Datu Abubkar Bin Daud, Science and Technology, Malaysia.

Co-Chair: Dr. Syed Jalaludin bin Syed Salim, Vice-Chancellor, UPM, Malaysia.

150 papers presented.

2 . 2nd International Science Conference, 26-28 October, 2000 in collaboration with Institute of Chemical Engineering and Technology, University of the Punjab,Lahore.

Opening: Lt. General(R) Arshad Mahmood, Vice Chancellor, P. U. Lahore.

Closing: Dr. Zafar Iqbal, Director, Institute of Chemistry, University of the Punjab, Lahore.

120 papers presented.

3 . 3<sup>rd</sup> International Science Conference, 26-28 September, 2002, University of Arid Agriculture, Rawalpindi.

Opening: Khurshid-u-Zaman Qureshi, Minister of Agriculture, Government of the Punjab.

135 Papers Presented.

Closing: Dr. K. A. Malik, Member, Pakistan Atomic Energy Commission, Islamabad

4 . 4<sup>th</sup> International Science Conference due by the end of 6-8 October 2004. University of Azad Kashmir , Muzaffarabad)

150 papers presented.

5 5<sup>th</sup> INTERNATIONAL MULTIDISCIPLINARY CONFERENCE

September 14-16, 2015

VENUE: IMPERIAL COLLEGE OF BUSINESS STUDIES,

Canal Bank Road, Near Bahria/Shahkam Chowk, Lahore, Pakistan

## SEMINR SERIES

a) A series entitled "SCIENCE TASK FORCE" in collaboration with Pakistan Broadcasting Corporation (Radio Pakistan, Lahore).

i. 28 February, 1991, Alhamra Hall, Lahore.

Chief Guest: Mian Mohammad Azhar, Governor of the Punjab.

Speaker: Dr. S. H. Iqbal, Chairman, Department of Botany, Pujab University, Lahore.

Topic: Fungus - What Good Is It?

ii. 25 April 1991, at Alhamra Hall, Lahore.

Speaker: Dr. N.M. Butt, Director General, PINSTECH, Islamabad.

Topic: New Materials and Super Conductors.

iii. 30 July 1991, at Alhamra Hall, Lahore.

Chief Guest: Ghulam Haider Wayen; Chief Minister, Punjab.

, Pakistan

Speaker: Dr. Shamim Ahmad Chaudhry, CSO, PINSTECH, Islamabad.

Topic: Production of Radio Isotopes.

iv. 8 December, 1991, at Alhamra Hall, Lahore.

Chief Guest: Qazi Aliun ud Din, Chairman, Pakistan Engineering Counsel.

Guest of Honour: Dr. N. M. Butt, Director, PINSTECH, Islamabad.

Speaker: Dr. Syed Mohammad Qasim (Germany).

Topic: Radio Isotopes for Emission Tomography.

b) IN P.C.S.I.R. COMPLEX, LAHORE.

i. 14 February 1993.

Chief guest: Dr. M. A. Saeed, Director General, PCSIR, Laboratories, Lahore.

Dr. Khalida Usmani, Executive Director, C.R.F.P. & W.I.E.C., Asian Chapter.

Speaker: Dr. Syed Sajjad Hussain, Cancer Institute, Buffalo, U.S.A.

Topic: Cancer Diagnosis, Role of a Chemist.

ii. 3 April 1993.

Chief Guest: Mian Mohammad Azhar, Governor of the Punjab.

Guest Speaker: Dr. A. Q. Ansari, Chairman, PCSIR, Laboratories.

Speaker: Dr. Hamid Ahmad Khan, Director General, PINSTECH, Islamabad.

Topic: Radiation Hazards.

## 6th International Multidisciplinary Conference

Dr. Khalida Usmani, Executive Director, C.R.F.P. & W.I.E.C. Asian Chapter.

A talk - Preventions Against Cancer.

### c) DURING CONFERENCE

i. 18 May, 1992, Khanspur, Pakistan.

Chair: : M. A. Saeed, Head, Applied Div., PCSIR, Laboratories, Lahore.

Speaker: Dr. M. A. Khan, Institute of Chemistry, Punjab University, Lahore.

Topic: News Aspects of Environmental Pollution.

Speaker: Dr. Khawaja Yaldrem, Pakistan Atomic Energy Commission, Islamabad.

Topic: Computer Simulation.

ii. 29 December 1993, Aitchison College, Lahore.

Chair: Dr. S. A. Khan, Chairman, PCST, Islamabad.

Speaker: Dr. N. M. Butt, Director, PINSTECH, Islamabad.

Topic: Role of New Materials and Super Conductors in Industry.

iii. 30 December 1993, Aitchison College, Lahore.

Chair: Dr. S. A Khan, Chairman, PCST, Islamabad.

Speaker: Dr. M. Ashraf Tahir, Chief, DNA and Sereology, Indianapolis, Indiana, U.S.A.

Topic: Role of DNA in the detection of crimes.

iv. 13.November,1994 , Bara Gali.

Chair: : Dr. Khalid Farooq

Speaker: Dr. Naeem ul Hassan Janjua, A. Q. Khan Res. Labs: on deputation NED University, Karachi.

Topic: Life Engineering.

v. 14.9.1994, Bara Gali.

Chair: : Dr. Khalid Farooq, C. S. O., PCSIR, Lahore.

Speaker: Dr Khalid Janjua: PCSIR Laboratories, Lahore.

Topic: Elementology.

vi. 15.9.1994, BaraGali.

Presided: Dr. Khalid Farooq, CSO., PCSIR, Lahore.

Speaker: Dr. Mudassar Tabassum: Guest from, Italy.

Topic: Laser Tehnology and Medical Science.

vii. 16. 9.1996, University College of Agriculture, Rawalakot.

Speaker: Ian Williams(Asian Bank)

Topic: Global Environmental Issues: Role of Asian Bank.

Speaker: Dr. L. C. Warner, Plant Scientist (U.S.A)

Topic: A half Century Evolution in the Practice of Controlling Weeds.

Speaker: Dr. Dilnawaz Gardezi, U.C.A. Rawalakot.

Topic: Soil Errosion Problems in Azad Kashmir.

5.9. 1997. NWFP Agriculture University, Peshawar.

Speaker: Dr. Lutfulla, Dir., Centre of Excellence in Physical Chemistry, University of Peshawar.

Topic: Information Technology.

Biotechnology.

7.5.1998- Universiti Putra Malaysia, Malaysia.

Speaker: Prof. H/jg. Rosnani Binti Ibrahim

Topic: Environmental Management in Malaysia.

Speaker: Dr. M. Anwar Chaudhry, University of Melbourne, Australia.

Topic: Role of Nuclear Physics in biological, environmental, industrial and medical sciences.

Speaker: K. J. Jones, MIMOS, Malaysia.

Topic: The National IT Agenda: Implication to the R&D Community.

27.10. 2000. Institute of Chemical Technology, University of the Punjab, Lahore.

Dr. Muhammad A. Tahir, Sereology, Indianapolis, Indiana, U.S.A.

Applicaion of DNA in the detection of crimes.

Dr. M. N. Riaz, Texas A & M University , USA.

Extrusion Technolog(Food).

27.9.2002- University of Arid Agriculture, Rawalpindi.

Chair: Dr. Ashraf Atta.(SI, HI), Dr. A. Q. Khan Res. Labs., Rawalpindi.

Speaker: Romana Aziz, Head Computer Department, UAAR.

Topic: E-mail Packages

### 6th International Multidisciplinary Conference

Speaker: Prof. Dr. M. Akhtar, FRS, University of Southampton, U.K.

Topic: On the Frontiers of Biological Sciences:

8.10.2004. University of Azad Jammu & Kashmir, Muzaffarabad.

Speakers:

i. Dr. M. N. Khan, Rector, GIK Institute of Engineering and Technology.

Fabrication of High-Tc Super Conductors for Energy Technology and its Environmental Impact.

ii. Dr. Muhammad A. Tahir, Sereology, Indianapolis, Indiana, U.S.A.

Forensic Science; A Modern Tool for the Detection of crime.

iii. Dr. Gulam Sarwar, Head(Rtd), Dept. of Oncology, King Edward Medical College, Lahore.

Prevention & Cure of Cancer.

iv Dr. Sadaqat Mehdi, Registrar, Virtual University, Lahore.

Distant Learning

9.12.1995, University of Agriculture, Faisalabad.

Chair: Dr. Kausar Abdullah Malik, Director, NIBGE, Faisalabad.

Topics: (Morning Session)Higher Education & Research; Current Issues.

(Evening Session)Research & Industry; Interactions.

Speakers:

Dr. Mujtaba Naqvi, Dir. Gen., NIAB,, Faisalabad.

Dr. Tausif Rashid Butt, Universty of Philadalphia, U. S. A.

Also addressed by:

Dr. Bohari. M. Yamin, Deputy Dean, U. K. M., Malaysia

Dr. Anwar Nasim, Pakistan Academy of Sciences, Islamabad.

Dr. Khalid Farooq, CSO, PCSIR, Lahore.

Dr Khurshid Alam, Dean(Agriculture), University of Agriculture, Faisalabad.

Dr. Matiullah, CNS, Islamabad.

Dr. Abrar Hussain Gilani, Dean, University of Agriculture, Faisalabad.

Dr. Altaf-ur-Rehman Rao, Dean(Physical Sciences), University of Agriculture, Faisalabad.

27.9.2002: WORK SHOP:

University of Arid Agiculture, Rawalpindi

Chair: Dr. M. Afzal, Director General, PASTIC, Islamabad.

Topic: Evaluation of Research Papers

Views of the participants followed by general discussion

Recommendations consolidated by the Head of the Committee.

Dr. M. Younas,

Chairman, Live Stock Management, University of Agriculture, Faisalabad.

Publication:

WATER CRISES AND CROP PRODUCTION GAPS IN PUNJAB

Identification, Risk Analysis and Mitigation Measures

Authors: M Azhar Javed and M. Tariq Yamin



# ANALYSIS OF DYNAMIC STRUCTURE, GRANGER CAUSALITY AND FORECASTING WITH VECTOR AUTOREGRESSION (VAR) MODELS ON CREDIT RISK DATA

Warsono<sup>1\*</sup>, Yeftanus Antonio<sup>1</sup>, Dian Kurniasari<sup>1</sup>, M. Azram<sup>2</sup> and Mustofa Usman<sup>1</sup>

<sup>1</sup>Department of Mathematics, Faculty of Mathematics and Natural Sciences, Universitas Lampung, Indonesia

<sup>2</sup>Department of Mathematics and Statistics (DOMAS), Sultan Qaboos University, Muscat, Oman

\*Email: Warsono1963@fmipa.unila.ac.id

**ABSTRACT:** This research discusses the dynamic structure, causality relationship, and forecasting using Vector Autoregressive (VAR) model approach. The dynamic structure is in the form of Impulse Response Function (IRF) and Forecast Error Variance Decomposition (FEVD). The causality analysis is conducted by using granger causality approach. Then the influence of a variable to predict other variables will be directed by forecasting evaluation on the VAR model. This model is applied to see the relationship on Non-Performing Loan (NPL), Loan Interest Rate (LIR), Inflation (INF), and Rupiah Exchange Rate (EXR). The dynamic structure of the IRF results indicates that each variable requires more than 10 periods to reach equilibrium after experiencing shock. Based on the FEVD results the variance of forecasting errors at the beginning of the period is influenced only by the variable itself. The Granger causality test is significant for claiming a bi-directional causality between credit risk (NPLs) and loan interest rate (LIR), and there is indirect causality between inflation (INF) and credit risk (NPL), and direct causality between the rupiah exchange rate (EXR) and credit risk (NPL). The results of the forecasting evaluation indicate that this model is dynamically good enough to do the forecasting.

**Keywords:** Vector Autoregressive Model (VAR), Granger Causality, Impulse Response Function, Forecast Error Variance Decomposition, forecast.

## 1. INTRODUCTION

Vector Autoregressive (VAR) models are widely applied in economics [1] to obtain linear interdependence relationships between variables. This model is a stochastic process model that is an extension of the Autoregressive (AR) model where the VAR model allows using more than one variable.

There are four core things that can be investigated with the VAR model: (1) Impulse Response Function (IRF) analysis that explains the dynamic impact of change on one variable to another variable, (2) Forecast Error Variance Decomposition (FEVD) that describes huge variance on any variables that can cause changes in other variables, (3) Granger Causality to obtain causal effects between variables, and (4) Forecasting to know whether the value of a current variable is explained by the value of other variables present in the model in the past. Because it is related to the dynamic impact of IRF and FEVD analysis can be summarized as a dynamic structure analysis.

This research uses VAR approach to obtain interaction and relation on credit risk data. The IRF, FEVD, Granger Causality, and Forecasting analyzes will be conducted using credit risk (NPL) and Loan Interest (LIR), Inflation (INF) and Exchange Rate (EXR) data.

The data used is obtained from the monthly report of commercial banks at the Representative Office (KPw) of Bank Indonesia in Lampung Province and the Central Bureau of Statistics in Lampung Province. The data period is from March 2006 to December 2014.

### 1.1 Definition of Credit Risk

In the package of deregulation policy in May 1993, Bank Indonesia (BI) defines non performing loans are credits classified in underserved, doubtful, and loss collectibility.

In accordance with Bank Indonesia Circular Letter No.3 / 30 / DPNP dated December 14, 2001[2], loans experiencing congestion (non-performing loans) are measured by the percentage of Non Performing Loan (NPL). NPL is measured from the ratio of comparison of non-performing loans to total loans.

$$NPL = \frac{(KL + DR + M)}{TK} \times 100\%$$

with:

- KL : Amount of credit included in the substandard collectibility.
- DR : Amount of credit included in the doubtful collectibility.
- M : Number of credits included in the jammed collectibility.
- TK : Total Credit.

The collectibility is the criterion of the ability to pay the debtor. Based on Bank Indonesia Circular Letter no. 7/3/DPNP dated January 31, 2005 [3] the criteria for repayment are as follows:

- a) Current credits are credits with timely payment, good account development, and no arrears and in accordance with credit terms.
- b) Special interest credits are credits with arrears of principal and / or interest payments of up to 90 days.
- c) Non-current credits are credits with arrears of principal and/or interest payments exceeding 90 days up to 180 days.
- d) Doubtful credits are credits with arrears of principal and / or interest payments exceeding 120 days up to 180 days.
- e) Bad credits are credits with delinquent principal and / or interest payments exceeding 180 days.
- f)

### 1.2 Definition of Loan interest rate

Loan interest rate in this analysis is obtained from Monthly General Report of Commercial Bank of Bank Indonesia which is the Basic Loan Interest Rate (BLIR). Based on Bank Indonesia Circular Letter no. 15/1/DPNP dated January 15, 2013[4], BLIR is the lowest interest rate that reflects the fairness of the cost incurred by the Bank including the expected profit to be gained. Furthermore, BLIR becomes the basis for Banks in determining loan interest rate to be imposed to the customer. CBIR does not yet take into account the risk premium estimation component which the amount is depending on the Bank's assessment of the risk of each debtor or group of debtors. The calculation of basic loan interest rate is based on 3 (three) components, namely:

- a) Primary Cost of Funds for Credit (PCFC) arising from fund raising activities;
- b) Overhead costs incurred by the Bank in the form of non-interest operating expenses incurred for fund raising activities and disbursement of liabilities including tax costs to be paid; and
- c) Profit margin set by the Bank in the activity of credit lending.

**1.3 Definition of Inflation**

Inflation is a change from the Consumer Price Index (CPI) from a time (n) to the previous time (n-1). CPI is an indicator to know the development of price level of goods/services need of society on average (aggregate).

In general, the occurrence of inflation indicates an increase of goods/services prices for daily needs of the community. High increase of goods and services prices can result in decreased public ability/power of purchasing to get these goods/services (the real value of the currency declines).

Calculation Method of CPI:

$$I_n = \frac{\sum_{i=1}^k \frac{P_{ni}}{P_{(n-1)i}} \times P_{(n-1)i} \cdot Q_{oi}}{\sum_{i=1}^k P_{oi} \cdot Q_{oi}}$$

Where

- $I_n$  : Index of month n
- $P_{ni}$  : Price of item i, in month n
- $P_{(n-1)i}$  : Price of item i, in month n - 1
- $P_{(n-1)i}Q_{oi}$  : Consumption value of goods i, month n - 1
- $P_{oi} \cdot Q_{oi}$  : Consumption value of goods i, in base year
- K : The number of items of commodity packets

**Monthly Inflation Rate**

$$LI_n = \frac{I_n - I_{(n-1)}}{I_{(n-1)}} \times 100\%$$

With,

- $LI_n$  : Inflation rate month -n
- $I_n$  : Index of month n
- $I_{(n-1)}$  : Index of month n - 1 [5]

**1.4 Definition of Exchange Rates**

The exchange rate of a currency or so-called exchange rate is the price of a unit of foreign currency in a domestic currency or it can also be the price of a unit of domestic currency in a foreign currency. The exchange rate (EXR) of Rupiah in one US dollar (USD) is the price of one US dollar (USD) in Rupiah (Rp) or, otherwise, it can also be interpreted as the price of one Rupiah in USD.

If the exchange rate is defined as the value of the Rupiah in foreign currency, the following conditions may be formulated:

$NT_{IDR/USD}$  = Rupiah needed to buy 1 US dollar (USD);

Or if the exchange rate is defined as the value of foreign currency in Rupiah:

$NT_{USD/IDR}$  = US dollar required to buy one Rupiah [6]

**1.5 Analysis on Credit Risk Data**

Credit Risk needs to get important and serious attention. The number of non-performing loans can cause bad turnover in the Bank and ultimately affect economic growth. This is because credit problems can lead to bankruptcy in Banks affecting a country or regional economy. In general, macroeconomic changes may lead to an increase in the value of NPL [7]. The same thing is also happen with the Cox intensity fit model that general macroeconomic conditions may affect credit risk [8].

The studies on the relationship of credit risk and macroeconomic variables have also been conducted in several countries such as Malaysia [9], Italy, Greece, and Spain [10], and Pakistan [11]. Some macroeconomic variables such as loan interest rate, inflation, and exchange rates are used to find its relationship with credit risk using the VAR model in the Gulf Cooperative Council (GCC) countries [12].

**2. THEORETICAL FRAMEWORK**

**2.1 Stationarity**

Suppose the vector time series  $Y_t = (y_{1t}, y_{2t}, \dots, y_{mt})$  contains munivariate time series. Then  $Y_t$  with the first moment and the second finite moment are weakly stationary if:

- (i)  $E(Y_t) = E(Y_{t+s}) = \mu$ ; constant for all s
- (ii)  $Cov(Y_t) = E[(Y_t - \mu)(Y_t - \mu)'] = \Gamma(0)$
- (iii)  $Cov(Y_t, Y_{t+s}) = \Gamma(s)$ ; depends only on s [13].

Augmented Dickey Fuller (ADF) Test:

ADF test here consists of estimating the following regression:

$$\Delta Y_t = A_1 + A_2 t + \delta Y_{t-1} + \sum_{i=1}^m \alpha_i \Delta Y_{t-i} + \epsilon_t$$

Where  $\epsilon_t$  is a pure white noise error term and where:

$\Delta Y_{t-1} = (Y_{t-1} - Y_{t-2}), \Delta Y_{t-2} = (Y_{t-2} - Y_{t-3}),$ ect.

Null hypothesis

$H_0: \delta = 0$  (there is unit root, then  $Y_t$  nonstationary)

$H_1: \delta > 0$  (there is no unit root, then  $Y_t$  stationary)

Null Hypothesis that  $\delta = 0$  follow  $\tau$  (tau) statistics [14].

**2.2 Vector Autoregression (VAR)**

Suppose the stochastic  $\{y_t\}$  is a VAR process of order p (VAR (p)) of the form

$$y_t = A_1 y_{t-1} + \dots + A_p y_{t-p} + u_t, \tag{2.1}$$

Where  $A_i$  ( $i = 1, \dots, p$ ) is  $k \times k$  parameter matrices and the error process  $u_t = (u_{1t}, \dots, u_{kt})'$  is a k-dimensional zero mean white noise process with covariance matrix  $E(u_t u_t') = \Sigma_u$ , that is,  $u_t \sim (0, \Sigma_u)$ . Using the lag operator and defining the matrix polynomial in the lag operator  $A(L)$  as  $A(L) = I_k - A_1 L - \dots - A_p L^p$ , the process (2.1) can be written as [15, 16]:

$$A(L)Y_t = u_t \quad (2.2)$$

VAR Stable Process:

The VAR process (2.1) or (2.2) is stable if

$$\det A(z) = \det(I_k - A_1z - \dots - A_pz^p) \neq 0 \quad z \in \mathbb{C}, |z| \leq 1. \quad (2.3)$$

In other words,  $y_t$  is stable if the determinantal polynomial is outside the complex unit circle, or equivalently determinantal polynomial is inside the inverse complex unit circle [15,16].

VAR Order Selection Criteria:

For selecting optimal lag, several information criteria are used to get optimum lag length. VAR(p) model and  $\tilde{\Sigma}_u(p)$  is the ML estimator of  $\Sigma_u$  (white noise variance covariance matrix of VAR model) obtained by fitting a VAR (p) model. T is the sample size and K is the dimension of the time series. The information criteria to select lag length are :

(i) Final Prediction Error (FPE)

$$FPE(p) = \frac{[T+Kp+1]^K}{[T-Kp-1]^K} \det \tilde{\Sigma}_u(p)$$

(ii) Akaike's Information Criterion (AIC)

$$AIC(p) = \ln |\tilde{\Sigma}_u(p)| + \frac{2pK^2}{T}$$

(iii) Hannan-Quinn (HQ) Criterion

$$HQ(p) = \ln |\tilde{\Sigma}_u(p)| + \frac{2 \ln \ln T}{T} pK^2$$

(iv) Bayesian arguments Schwarz (SC)

$$SC(p) = \ln |\tilde{\Sigma}_u(p)| + \frac{\ln T}{T} pK^2$$

[16].

Estimating VAR Model:

Under general assumption a stable process  $y_t$  has time invariant means, variance, and covariance structure and, therefore, stationary. In the matrix representation, VAR (p) model can be written as

$$Y = X\beta + U, \quad (2.4)$$

where  $Z$  is a  $(T-p) \times k$  matrix with  $i$ -th row being  $z'_{p+i}$ ,  $X$  is a  $(T-p) \times kp$  design matrix with  $i$ -th row being  $x'_{p+i}$ ,  $\beta' = (A_1, \dots, A_p)$  is a  $k \times kp$  matrix, and  $U$  is a  $(T-p) \times k$  with  $i$ -th row being  $u'_{p+i}$ .

Ordinary Least-Square estimate for VAR (p) model in Equation (2.4) is

$$\hat{\beta}_{OLS} = (X'X)^{-1}X'Y. \quad (2.5)$$

[17].

### 2.3 Impulse Response Function (IRF)

Reduce form VAR model

$$y_t = v_0 + v_1t + A_1y_{t-1} + \dots + A_p y_{t-p} + u_t \quad (2.6)$$

Where  $v_0 = (I_k - \sum_{j=1}^p A_j)\mu_0 + (\sum_{j=1}^p jA_j)\mu_1$  and  $v_1 = (I_k - \sum_{j=1}^p A_j)\mu_1$ . Since reduced form VAR model represents the conditional mean of a stochastic process. If  $y_t$  is generated by a VAR (p) process (2.6), the conditional expectation of  $y_{T+h}$  given  $y_t, t \leq T$ , is

$$y_{T+h|T} = E(y_{T+h}|y_T, y_{T-1}, \dots) = v_0 + v_1(T+h) + A_1y_{T+h-1|T} + \dots + A_p y_{T+h-p|T}, \quad (2.7)$$

where  $y_{T+j|T} = y_{T+j}$  for  $j \leq 0$ . The forecast error associated with an  $h$ -step forecast is

$$y_{T+h} - y_{T+h|T} = u_{T+h} + \Phi_1 u_{T+h-1} + \dots + \Phi_{h-1} u_{T+1}, \quad (2.8)$$

where the  $\Phi_i$  matrices may be obtained recursively as

$$\Phi_i = \sum_{j=1}^i \Phi_{i-j} A_j, \quad i = 1, 2, \dots \quad (2.9)$$

In VAR models, changes in the variables are induced by nonzero residual, that is, by shocks which may have a

structural interpretation if identifying structural restrictions have been placed accordingly. Hence, to study the relations between variables, the effects of nonzero residuals or shocks are traced through the system. This kind of analysis is known as impulse response analysis [15].

### 2.4 Forecast Error Variance Decomposition (FEVD)

Related tools are forecast error variance decompositions. In the reduced form VAR model (2.6) impulses, innovations or shocks enter through the residual vector  $u_t = (u_{1t}, \dots, u_{kt})'$ . We have to ignore deterministic terms because they are not important for impulse response analysis given

$$y_t = A(L)^{-1}u_t = \Phi(L)u_t = \sum_{j=0}^{\infty} \Phi_j u_{t-j}, \quad (2.10)$$

where  $\Phi(L) = \sum_{j=0}^{\infty} \Phi_j L^j = A(L)^{-1}$ . As mentioned earlier, forecast error variance decompositions are another tool for investigating the impacts of shocks in VAR models. In terms of the structural residuals the  $h$ -step forecast error (2.8) can be represented as

$$y_{T+h} - y_{T+h|T} = \Psi_0 v_{T+h} + \Psi_1 v_{T+h-1} + \dots + \Psi_{h-1} v_{T+1}.$$

Using  $\Sigma_v = I_k$ , the forecast error variance of the  $k$ -th component of  $y_{T+h}$  can be shown to be

$$\sigma_k^2(h) = \sum_{j=0}^{h-1} (\psi_{k1,j}^2 + \dots + \psi_{kk,j}^2) = \sum_{j=1}^k (\psi_{kj,0}^2 + \dots + \psi_{kj,h-1}^2),$$

where  $\psi_{nm,j}$  denotes the  $(n, m)$ th element of  $\Psi_j$  [15].

### 2.5 Granger Causality

Consider the following bivariate VAR model for two variables  $(X_t, Y_t)$  :

$$X_t = A_0 + \sum_{i=1}^p A_i X_{t-i} + \sum_{i=1}^p B_i Y_{t-i} + \varepsilon_{1t},$$

$$Y_t = B_0 + \sum_{i=1}^p \gamma_i X_{t-i} + \sum_{i=1}^p \delta_i Y_{t-i} + \varepsilon_{2t}.$$

Granger Causality for linear model,  $X_t$  Granger causes  $Y_t$  if the behavior of past  $X_t$  can better predict the behavior of  $Y_t$  than  $Y_t$  past alone.

Hypothesis of Granger causality test is as follows :

$H_0$ : **Granger noncausality**  $x_t$  does not predict  $y_t$

if  $\beta_i = 0$ , for some  $i = 1, 2, \dots, p$

$H_1$ : **Granger causality**  $x_t$  does predict  $Y_t$

if  $\beta_i \neq 0$  for some  $i = 1, 2, \dots, p$

The null hypothesis is tested under  $\chi^2$ -Wald statistics [18].

### 2.6 Forecasting

There are several measures to know the accuracy of forecast value. Suppose that there are  $n$  observations for which forecasts have been made and  $n$  one-step-ahead forecast error,  $e_t(1), t = 1, 2, \dots, n$ . With

$$e_t(1) = y_t - \hat{y}_t(t-1); \text{ and}$$

relative forecast error is defined as:

$$re_t(1) = \left( \frac{y_t - \hat{y}_t(t-1)}{y_t} \right) 100 = \left( \frac{e_t(1)}{y_t} \right) 100$$

(i) Mean Absolut Error (MAE)

$$MAE = \frac{1}{n} \sum_{t=1}^n |e_t(1)|$$

(ii) Mean Absoluter Percent Forecast Error (MAPE)

$$MAPE = \frac{1}{n} \sum_{t=1}^n |re_t(1)|$$

(iii) Root Mean Square Error

$$RMSE = \sqrt{\frac{1}{n} \sum_{t=1}^n [e_t(1)]^2}$$

**3. METHODOLOGY**

Steps for Specification and Analysis with VAR Model are as follows:

**Step 1:** Test the stationarity of the data

In this section the stationarity of the data will be examined. Identification plot of time series data will be done to check whether the data contain constants and trends or not. Then if there is non-stationary data, a log transformation will generally be performed to handle the uniformity in variance and differentiation to handle the non-stationary in the mean. The stationarity test / unit root test used is the ADF test.

**Step 2:** Determine the length of optimum lag

Before Displaying Information Criteria we need to look for maximum order from VAR. The maximum order is an order in which the VAR process is still stable. Maximum order is obtained by trying the VAR model on different lags until an unstable process is found. After that optimum lag is selected by using Information Criteria.

**Step 3:** Specification and Estimation of VAR Model

The optimized VAR order obtained is used as a model specification. When p is optimum then the VAR model specification is VAR (p). Estimated VAR models will use Ordinary Least Square (OLS).

**Step 4:** Granger Causality Test

The estimation result on the VAR model is used to test each equation in the model whether there is a causality relationship or not. The test uses  $\chi^2 \sim$ Wald.

**Step 5:** IRF Analysis

Through IRF chart dynamic response can be shown from each variable to other variables after some periods experiencing shocks of 1 standard deviation. Because the VAR model only sees short-term dynamics, in this section it will be seen for 10 periods after experiencing shocks.

**Step 6:** Decomposition of variance error forecasting .

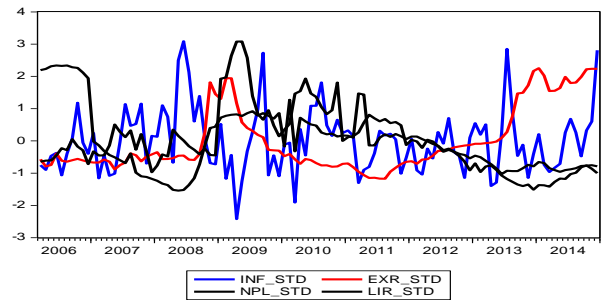
The decomposition of variance error forecasting is shown by the FEVD graph. This graph can explain the magnitude of the contribution of each variable that causes changes to other variables.

**Step 7:** Forecasting

The goal is to see the accuracy of the past value of another variable in predicting the current value of a variable. Evaluation of forecasting will be used as a measure of the accuracy of forecasting.

**4. RESULTS AND DISCUSSION**

**4.1 Data Stationarity Test**



**Fig. 1. Graph of Standardized Data**

tested by using Augmented Dicky Fuller (ADF) test. Before performing Specification and Estimation model to perform analysis with VAR model, the identification is done to see whether the data is stationary or not. Figure 1 presents graph analysis for stationarity for NPL, LIR, EXR, and INF variables. Judging from the time-to-time movement it is suspected that EXR, NPL, and LIR are not stationary in either mean or variance. Meanwhile, inflation is stationary at the level. To deal with uniformity in variance, justification is used for transforming log transformations. The result of log transformation is LNPL, LLIR, and LEXR. Then the roots of the units on all four variables are

**Table 1. Result of ADF unit root test in level**

Variable	,Critical Value, t-statistik value, dan P-Value		
	C-Value 5%	t-Statistik	P-Value
LLIR	-2.889474	-2.328469	0.1651
LNPL	-2.889200	-1.911714	0.3259
LEXR	-3.453601	-1.706942	0.7414
INF	-2.889200	-6.229594	0.0000

Table 1 shows the results of unit root test at the data level. With the hypothesis :

$H_0: \delta = 0$  (data is not stationary at the level)

$H_1: \delta < 0$  (data is stationary at the level)

With  $\alpha = 0.05$ , then the LLIR, LNPL, and LEXR variables in the data level do not reject the null hypothesis that the time series have unit roots or not stationary at the level. As for INF, the null hypothesis that INF has the root of the unit is rejected. So, the INF is stationary at the level. Then the root of the unit is tested with all the data on the first difference to see whether the data satisfies the stationary conditions on the first difference. The results of the ADF test on the first difference are shown in Table 3.

**Table 2. Result of ADF unit root test on the 1<sup>st</sup> difference**

Variable	ADF Test	C-Value	P-Value
LLIR	-13.27344	-3.494378	0.0000
LNPL	-10.81319	-3.494378	0.0000
LEXR	-7.679185	-4.048682	0.0000

Using the same hypothesis, the LLIR, LNPL, and LEXR on the first difference reject the null hypothesis that time series have unit roots. So LLIR, LNPL, and LEXR are stationary on the first difference.

Since the purpose of this model is to see the short term of dynamic structure, there is no need to test cointegration relationships [18]. This is because if the goal is only to see a causal relationship and a short-term dynamic relationship, then the effective VAR approach is used.

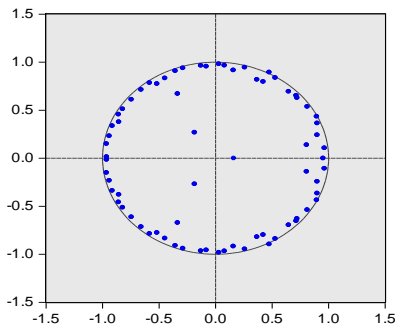
In this research we will use the VAR system on the first difference data, known as VAR in difference. So all the data used are NPL, LIR, INF, and EXR into the VAR equation on the first difference. The occurrence of over differencing in INF data that is stationary at the level is not a problem [19].

**4.2 Determining the Length of Optimum Lag**

To determine the optimum lag length, it is necessary to search first the maximum lag length of the VAR model. The maximum lag length is the length of the lag where the VAR process is still stable. That is, until the length of the lag, the VAR process is still stable. This is done by trial and error to find the maximum lag length.

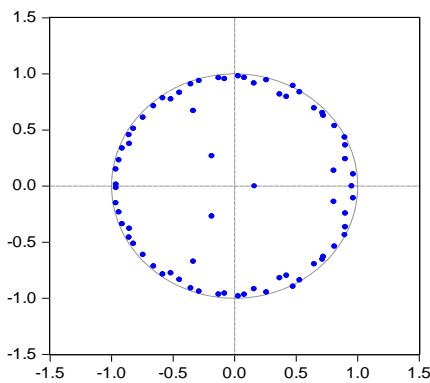
The VAR process is said to be stable if all the roots of the unit are within the circle of the complex unit or  $|z| < 1$ . Based on the inverse graph the unit roots of the polynomial characteristics of AR show that in lag 17 all the roots of the unit are within the circle of the complex unit or the whole modulus is less than 1. While in the VAR model with lag 18, there are 2 roots units that are outside the circle complex with a modulus of more than 1 i.e.  $|z| > 1$ . Thus, the maximum lag on the VAR model is 17.

**Inverse Roots of AR Characteristic Polynomial**



**Fig.2. The inverse graph of the unit roots of the polynomial characteristics of AR for lag equals to 17.**

**Inverse Roots of AR Characteristic Polynomial**



**Fig.3. The inverse graph of the unit roots of the polynomial characteristics of AR for lag equals to 18.**

To obtain optimum lag then the order selection criteria shown in Table 3 below is used.

**Table 3. Information Criteria for Selected Lag**

VAR Lag Order Selection Criteria					
Lag	LR	FPE	AIC	SC	HQ
0	NA	4.09e-09	-7.9634	-7.8508*	-7.9180*
6	27.884*	3.20e-09	-8.2713	-5.4562	-7.1371
16	23.932	3.08e-09*	-9.9161	-2.5967	-6.9673
17	12.310	3.84e-09	-10.200*	-2.4305	-7.0701

**Table 4. Goodness of fit for VAR model on selected lag.**

lag	Model Criteria	Endogen Variables			
		D_INF	D_LEXR	D_LNPL	D_LLIR
6	R-squared	0.439658	0.370705	0.471685	0.22283
	Adj. R-squared	0.257925	0.166610	0.300340	-0.02921
16	R-squared	0.801968	0.765074	0.862508	0.83505
	Adj. R-squared	0.273882	0.138604	0.495861	0.39521
17	R-squared	0.825908	0.808534	0.914075	0.86518
	Adj. R-squared	0.202842	0.123289	0.606552	0.38268

Table 3 contains the selected order which has a minimum value for each information criterion marked with \* in each model. The optimum lag selected is 0 based on SC and HQ, 6 based on LR, 16 based on FPE and 17 based on AIC. To select the lag used it is necessary to consider the goodness of fit of each model with the lag.

For that each R-Square and Adjusted R-Square is shown for each model with different lag. Lag with the highest R-Square and Adj-R-Square values are selected as the optimum lag on the VAR model. Based on the results in Table 4, the optimum lag selected is lag 17.

**4.3 Specification and Estimation of VAR Model**

The initial specification of the VAR model equation system requires the length of the lag p. From the previous result, the optimum lag value on the VAR model equation system is 17. So the model that will be estimated is the VAR model (17). The system specification describes the estimation method for the VAR model. In this case, the OLS (Ordinary Least Square) estimation method is used.

**Table 5. Goodness of Fit Estimation Result on OLS VAR(17)**

Variabel	D_INF	D_EXR	D_LNPL	D_LLIR
R-squared	0.82590	0.80853	0.91408	0.86518
Adj. R-squared	0.20284	0.12328	0.60655	0.38268
Sum sq. resid	11.1005	0.01248	0.10408	0.00653
S.E. equation	0.76435	0.02563	0.07401	0.01855
F-statistic	1.32555	1.17991	2.97238	1.79313
Log likelihood	-33.7714	265.007	171.689	293.469
Akaike AIC	2.33571	-4.45472	-2.33386	-5.10157
Schwarz SC	4.27817	-2.51226	-0.39140	-3.15912
Mean dependent	0.02023	0.00297	-0.00519	-0.00029
S.D. dependent	0.85609	0.02737	0.11799	0.02360

Table 5 shows the goodness of fit, F-Statistic, and mean and standard deviation of each equation obtained from the estimation of each equation in the VAR model. R-Square in each equation of INF, EXR, NPL, and LIR is equal to 0.83, 0.81, 0.91, and 0.87.

**4.4 Granger Causality Test**

Granger causality can only be interpreted as the correlation between the current value of a variable with the past value of the other variables [20]. Below is considered Granger's

causality test of the estimated model. All equations in the VAR model were tested with the Wald-Chi-Square distribution  $\chi^2 \sim \text{Wald}$  [21]. The probability value of each equation is shown in Table 6-9.

**Table 6. Result of Granger-Causality test for INF**

Dependent variable: D_INF			
Excluded	Chi-sq	Df	Prob.
D_EXR	12.23841	17	0.7855
D_LNPL	6.965945	17	0.9840
D_LLIR	14.96761	17	0.5978
All	54.17431	51	0.3543

**Table 7. Result of Granger-Causality test for EXR**

Dependent variable: D_LEXR			
Excluded	Chi-sq	Df	Prob.
D_INF	17.60699	17	0.4140
D_LNPL	15.81238	17	0.5372
D_LLIR	12.24876	17	0.7848
All	46.21379	51	0.6639

**Table 8. Result of Granger-Causality test for NPL**

Dependent variable: D_LNPL			
Excluded	Chi-sq	Df	Prob.
D_INF	26.43711	17	0.0669
D_LEXR	53.02162	17	0.0000
D_LLIR	38.58909	17	0.0020
All	148.4883	51	0.0000

**Table 9. Result of Granger-Causality test for LIR**

Dependent variable: D_LLIR			
Excluded	Chi-sq	Df	Prob.
D_INF	31.97816	17	0.0151
D_LEXR	23.70015	17	0.1278
D_LNPL	32.10658	17	0.0146
All	93.43608	51	0.0003

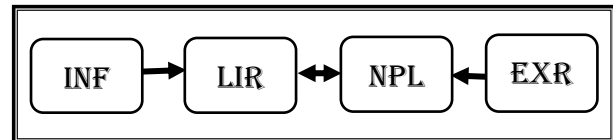
**Testing hypothesis:**

$H_0$ : Granger nonCausality (there is no causality relationship between  $x_t$  and  $y_t$ )

$H_1$ : Granger Causality (there is a causal relationship between  $x_t$  and  $y_t$ )

Based on the results in Table 6, at  $\alpha = 0.05$  the granger causality test on the EXR, NPL, and LIR variables does not reject the null hypothesis that there is no causality relationship. This means that the past values of EXR, NPL,

and LIR in the equation system cannot predict INF or in other words there is no causal relationship between INF with EXR, NPL, and LIR. Similarly in the causality test for the EXR variable. The results in Table 7 show that the null hypothesis is not rejected. This means that there is no causal relationship between EXR with INF, NPL, and LIR. For the causality test of the NPL variable, there are two significant variables, namely EXR granger causes NPL and LIR granger causes NPL. It is obtained from Table 8 where the null hypothesis of no causality relation is rejected. The granger causality test on the LIR variable presented in Table 9 also has two significant variables, the INF granger causes LIR and the NPL granger causes LIR.

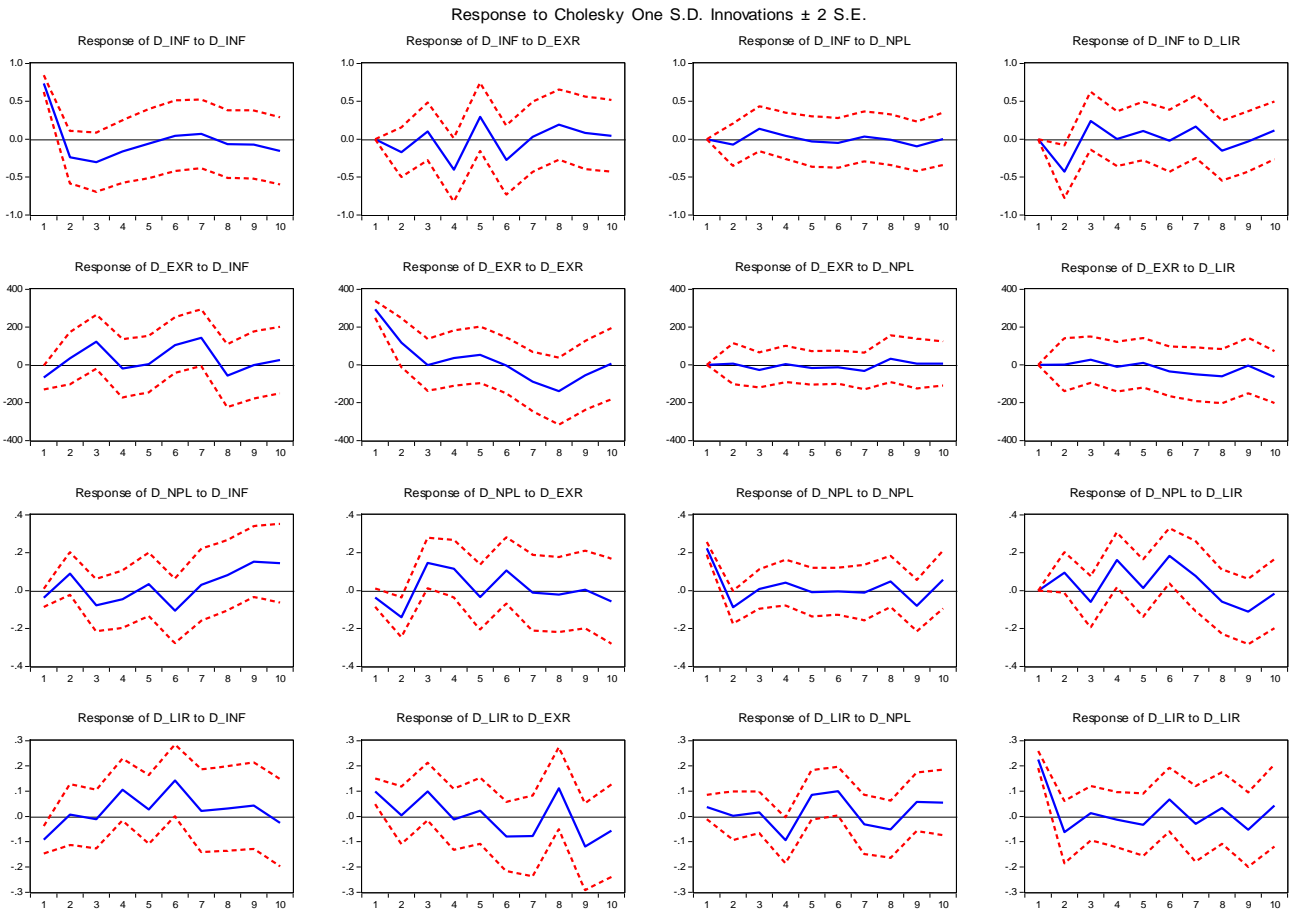


**Fig. 4. Diagram of Granger Causality Test Result**

Figure 4 summarizes the results of the Granger Causality Test. The causality diagram shows that there is bi-directional causality between NPL and LIR. There is also an unidirectional causality from INF to NPL through LIR and EXR to LIR through NPL. Directional causality occurs from EXR to NPL and INF to LIR. EXR and INF variables are strongly exogenous in equations to LIR and NPL due to INF Granger causes LIR and EXR Granger causes NPL, but not vice versa. This indicates a direct causality relationship on the credit risk data either two-way or one-way and the relationship of indirect causality.

**4.5 Analisis Impulse Respon Function (IRF)**

In this section we will discuss the results of IRF on the predicted VAR model. Figure 5 is the IRF graph which is the response of a variable over other variables as well as over itself. The information is measured at one standard deviation. The IRF graph follows the confidence interval  $\pm 2$  Standard Error (S.E.). The main purpose of this analysis is to determine the positive or negative response of a variable to other variables. The short-term response is usually very significant and fluid. IRF gives an idea of how to respond to a variable in the future if there is intervention on other variables.



**Fig. 5. Impulse Response Function (IRF) Cholesky One S.D. Innovation  $\pm 2$  S.E.**

Figure 5 is an IRF graph for the response given to each variable over another variable or the variable itself for 10 periods after the occurrence of a shock. Horizontal axis is the period (time) within months after the occurrence of change/shock, and vertical axis is the value of the given response.

INF gives a positive response in the first period after the shock of a standard deviation on itself. Then it fluctuates from the second to the fifth period and tends to reach equilibrium in the sixth to the tenth period. Changes in the exchange rate cause the INF to fluctuate (positive and negative responses interchangeably) with a fairly high gap up to the 10<sup>th</sup> period. This is possible because changes in the exchange rate will lead to changes in food prices and basic materials that cause inflation to be difficult to achieve stability. Inflation moves around the equilibrium line when responding to changes that occur in the NPL. Similarly, when responding to changes in loan interest rates, INF fluctuates around the equilibrium line. This means when there is a change in the variable LIR, EXR, and NPL then there is a large INF fluctuation when there is a change in the EXR.

The EXR response to INF changes tends to fluctuate while the EXR responds with equilibrium (fixed on equilibrium) to NPL and LIR changes. EXR changes to itself are in positive responses up to the sixth and negative in periods of the sixth to the tenth.

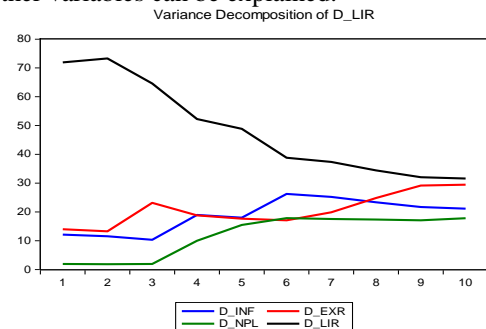
NPL is very sensitive to changes both from EXR, INF, LIR, and itself. This is shown from the highly fluctuating IRF graph. This is indicated by the NPL that has not reached equilibrium after ten periods of shock occurred. That is, it may take more than ten periods for NPL to

achieve equilibrium after the changes to EXR, INF, LIR, and NPL itself. This can be of particular concern to the government to see if the impact of these variables changes could lead to high credit risk and eventually many banks will go bankrupt.

The fluctuations that occur in the LIR tend to be on the equilibrium line. The LIR responds positively and negatively alternately from the first to the tenth period after the shock.

**4.6 Forecast Error Variance Decomposition (FEVD)**

The decomposition of variance error forecasting (Innovation Accounting) is a method other than IRF that is used to interpret the relationship of dynamic changes to the VAR model. FEVD is used to construct a variance of forecasting errors of a variable, namely how the difference between the range before and after the change in other variables. These differences include shocks coming from other variables as well as the variables themselves. With this, then the relative influence of the observed variables over other variables can be explained.



**Fig. 6. Variance Decomposition Graphic of LIR**

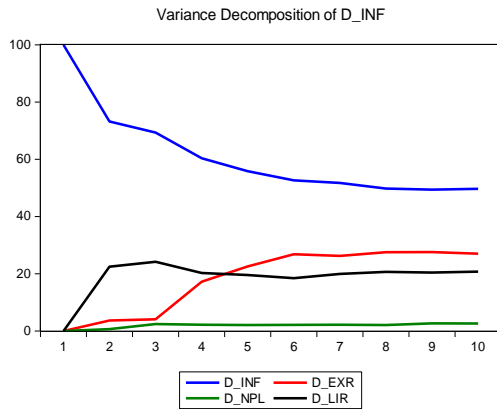


Fig. 7. Variance Decomposition Graphic of INF

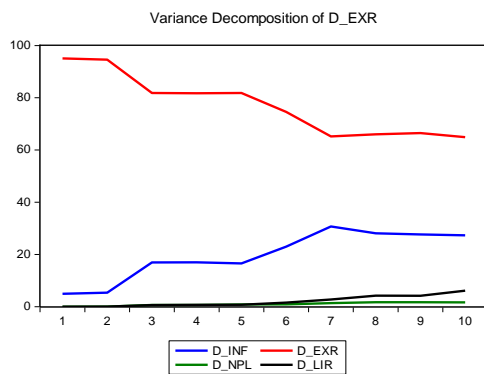


Fig. 8. Variance Decomposition Graphic of EXR

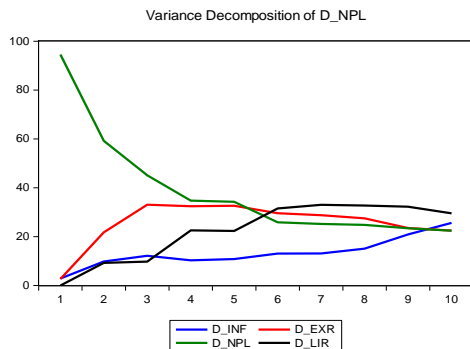


Fig. 9. Variance Decomposition Graphic of NPL

Figure 6-9 is a variable decomposition graph of each variable for 10 periods. This graph is a graph between time periods (lags) or periods and percentages of variance. When the line rises, it indicates the addition of the contribution of variance error forecasting to a variable by other variables. Figure 6 illustrates the variance contributions of LIRs both by the LIR itself and the NPL, INF, and EXR. In the first to sixth period it can be seen that the contribution of the variance of the error is largely influenced by the LIR itself. But in the 10<sup>th</sup> period, the contribution of variance is almost towards the same point, meaning that in the 10<sup>th</sup> period other variables contribute to the variance of LIR. The contribution of variance to the INF from the first to the tenth period tends to be explained by the INF itself. Based on the results in Figure 7, NPL tends to be stagnant for 10 periods, so the possibility of the variance contribution provided by the NPL to INF is very small. In Figure 8, during the ten periods the greatest variance tends to be contributed by EXR itself and by INF. LIR and NPL

contributes very little to the variance of EXR forecasting errors.

Different things happen to the NPL. Based on the decomposition of its variance, it can be seen that the four variables tend to contribute the same after the third period. This means that after the third period, the variance of NPL forecasting errors is contributed by INF, EXR, and LIR as well as NPL itself and together with almost the same value in period 10. The magnitude of each variable can be seen in Table 10-13

Table 10. Variance Decomposition of NPL

Variance Decomposition of D_LNPL:				
Period	D_INF	D_LEXR	D_LNPL	D_LLIR
1	7.697	16.022	76.279	0.0000
2	15.432	24.480	55.220	4.8662
3	23.703	29.289	43.220	3.7868
4	21.547	31.232	35.359	11.861
5	21.770	31.731	34.754	11.743
6	20.586	28.966	27.187	23.259
7	20.391	29.420	27.150	23.037
8	20.958	28.800	26.908	23.332
9	24.319	27.031	25.849	22.799
10	25.565	25.999	26.413	22.021

Table 11. Variance Decomposition of LIR

Variance Decomposition of D_LLIR:				
Period	D_INF	D_LEXR	D_LNPL	D_LLIR
1	11.262	10.9029	6.883581	70.95127
2	9.5908	9.32637	8.423313	72.65945
3	8.6503	18.6449	8.283581	64.42116
4	19.647	14.8905	14.29129	51.17049
5	18.656	14.4560	18.88059	48.00644
6	26.305	14.5092	20.17523	39.00991
7	23.386	23.1820	18.59251	34.83899
8	20.484	31.3140	16.05049	32.15136
9	19.616	34.2697	15.06232	31.05164
10	18.266	33.8626	16.35802	31.51232

Table 12. Variance Decomposition of EXR

Variance Decomposition of D_LEXR:				
Period	D_INF	D_LEXR	D_LNPL	D_LLIR
1	3.1505	96.84940	0.000000	0.000000
2	6.0731	92.68740	0.432428	0.807035
3	20.056	77.59827	0.601410	1.743785
4	20.670	76.84733	0.713994	1.767833
5	20.579	76.76342	0.923075	1.734413
6	24.501	72.51725	0.903594	2.078055
7	32.828	64.44414	0.783701	1.943198
8	30.482	65.21513	2.577966	1.724754
9	30.279	65.11437	2.576135	2.029790
10	30.603	63.87228	2.578169	2.945626

Based on Table 10, the contribution of variance from NPLs is contributed by INF, EXR, NPL, and LIR of 25.57%, 25.99%, 26.41% and 22.02%, respectively. This means that after reaching the 10<sup>th</sup> period each variable has a similar contribution. It means the innovation of the NPL is caused by both the NPL itself and other variables. Table 11 provides an explanation of the contribution to LIR innovation. This result is similar to the NPL that the contribution of LIR forecasting errors is influenced by 18.27%, 33.29%, 16.96%, 31.83% INF, EXR, NPL, and LIR respectively.



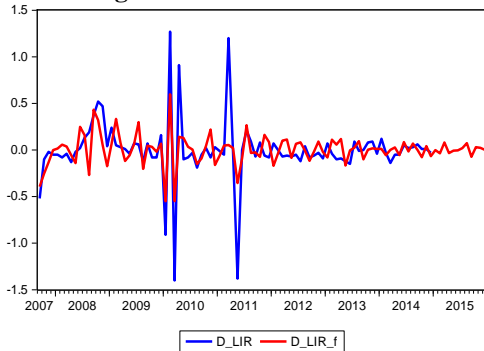
**Table 13. Variance Decomposition of INF**

Variance Decomposition of D_LINF:				
Period	D_INF	D_LEXR	D_LNPL	D_LLIR
1	100.00	0.000000	0.000000	0.000000
2	85.659	4.299977	0.203815	9.837109
3	78.802	5.882392	3.058546	12.25703
4	67.092	20.15226	2.507900	10.24747
5	62.295	24.42742	2.485053	10.79251
6	58.130	27.16305	4.077405	10.62895
7	56.605	26.57429	4.345964	12.47401
8	53.151	28.27273	4.705828	13.86957
9	53.185	28.03136	4.960038	13.82309
10	52.443	27.46444	4.881815	15.21011

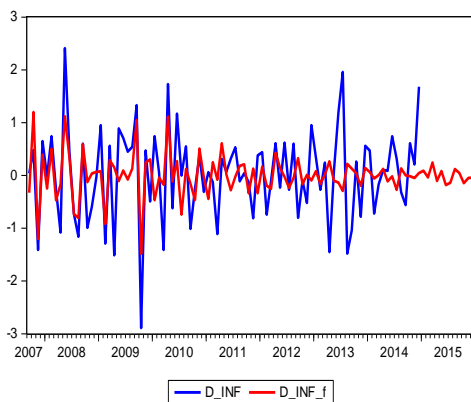
Table 12 describes the very small variance contribution of NPL and LIR to the variance of EXR forecasting errors. At the beginning of the second period it did not contribute to variance and at the end of the period only 2.58% and 2.95%. The greatest variance was contributed by EXR of 96.85% at the beginning of the period and 63.87% at the end of the period.

From Table 13, we can obtain information that in the first period 100% of the variance of INF was generated by the INF itself. This means that at the beginning of the period other variables do not contribute variance to INF. However, in the 10<sup>th</sup> period INF contributed 52.44% and 27.46%, 4.88%, and 15.24% of the variance of INF was conceived by the variance of EXR, NPL, and LIR.

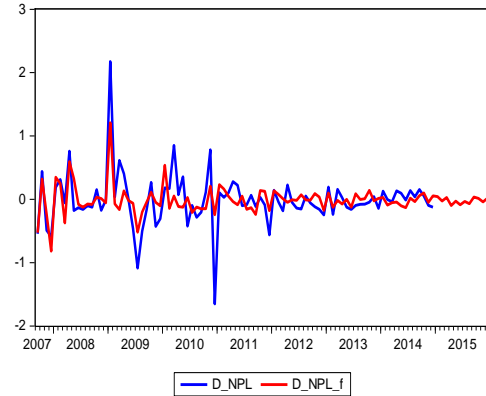
**4.7 Forecasting**



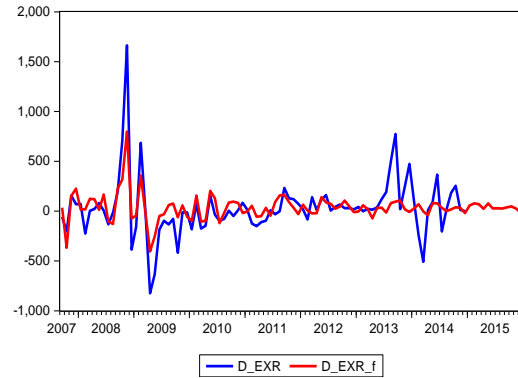
**Fig. 10. Graph of forecasting from LIR**



**Fig. 11. Graph of forecasting from INF**



**Fig. 12. Graph of forecasting from NPL**



**Fig. 13. Graph of forecasting from EXR**

Figure 10-12 is a plot of actual data and forecasting value called forecasting graph, the more fit the forecast line against the actual data line, the better the forecasting is. In Figure 10, the LIR variable forecasting graph shows a good result, even when fluctuations occur during the forecast period, the result of the forecast is away from actual data. On the other hand, Figure 11 illustrates that the INF variable result does not fit in its actual data, so the value of other variables in the past are not appropriate to explain or predict the value of current INF.

The NPL forecast graph in Figure 12 shows quite good results. The past values of INF, LIR, and EXR affect the NPL's present value. The forecasting value in Figure 13 indicates that the EXR forecasting results are quite good even though at the end of the period they are not fit on the actual data.

**Table 14. Results of Dynamic Forecasting Evaluation**

Forecast Evaluating				
Actual:	D_INF	D_LEXR	D_LNPL	D_LLIR
Forecast sample:	2007M09	2007M09	2007M09	2007M09
	2015M12	2015M12	2015M12	2015M12
RMSE	0.69982	0.019331	0.08438	0.01882
MAE	0.53893	0.013857	0.06236	0.01206
MAPE	658.444	361.9762	302.583	258.995
TIC	0.53582	0.452924	0.42686	0.52355

A summary of the forecasting evaluation is shown in Table 14 above. The results of forecasting are based on RMSE, MAE, and MAPE. Loan interest rate has the smallest evaluation result that is equal to 0.019, 0.012, and 258.9. This means that in this model, the best forecasting is the one generated at an equation with the endogenous variable LIR.

## 5 CONCLUSION

Based on the results and discussion in the previous section it can be concluded that Non-Performing Loan (NPL), Loan Interest Rate (LIR), Exchange Rate (EXR), and Inflation (INF) have the relationship described by dynamic structure (IRF and FEVD), granger causality and forecasting with VAR model. The optimum lag obtained is 17. So the VAR model used to model non-performing loan is VAR (17). From the results obtained on the relationship of granger causality it shows a direct causal relationship on the non-performing loan data either two-way or one-way and the relationship of indirect causality with LIR, EXR, and INF variables. The IRF analysis results show that for 10 periods after the shock NPL and LIR respond with fluctuations (positive and negative responses alternately) that have not achieved stability until the 10<sup>th</sup> period. This allows NPL and LIR to take more than 10 periods to achieve stability (equilibrium). The result of the variance decomposition explains that after 10 periods variance of forecasting non-performing loan (NPL) is contributed by INF, LIR, and EXR variables with almost the same value that ranges between 22% -26%. The result of the forecast shows that the equation with the best accuracy is in the equation with the exogenous variable of LIR.

## ACKNOWLEDGEMENT

Thank you to the Representative Office of Bank Indonesia in Lampung Province and the Central Bureau of Statistics Lampung Province which provide data access for use in this study

## 6. REFERENCES

- [1] Sims, Christopher. (1980). Macroeconomics and reality. *Econometrica*. 48 :1-48.
- [2] Bank Indonesia. (2001). Bank Indonesia Circular Letter No. 3/30/DPNP dated December 14, 2001. [www.bi.go.id](http://www.bi.go.id)
- [3] Bank Indonesia. (2005). Bank Indonesia Circular Letter No. 7/3/DPNP dated January 31, 2005. [www.bi.go.id](http://www.bi.go.id)
- [4] Bank Indonesia. (2013). Bank Indonesia Circular Letter No. 15/1/DPNP dated January 15, 2013. [www.bi.go.id](http://www.bi.go.id).
- [5] BPS statistics Lampung. (2014). Regional Macroeconomics Indicator of Lampung Province 2014. Lampung : BPS Statistics Lampung, p. 11-12.
- [6] Simorangkir, I. & Suseno. (2004). Exchange Rate System and Policy. Jakarta : Bank Central Education and Study Center of Bank Indonesia.
- [7] Das, Abhiman.,& Ghosh, Saibal. (2007). Determinan of credit risk in Indian Stateowned Banks : an empirical investigation. *Economic Issues*, Vol.12, Part 2, 2007.
- [8] Figlewski, S., Frydman, H., & Liang, W. (2012). Modeling the effect of macroeconomic factors on corporate default and credit rating transitions. *International Review of Macroeconomics and Finance*, 21, 2012, 87-105.
- [9] Jivasloo, A. M., Junaina, M. (2013). Sensitivity of non-performing loan to macroeconomic variables malaysia banking sector : panel evidence. *World Applied Sciences Journal* 28(12), 2128-2135.
- [10] Messai, A. S., & Jouini, F. (2013). Micro and Macro Determinants of Non-performing Loans. *Interntional Journal of Economics and Financial Issues*. Vol. 3, No. 4, pp. 825-860.
- [11] Ahmad, F., & Basir, T. (2013). Explanatory of Macroeconomic Variables as Determinant of Non-Performing Loans : Evidence from Pakistan. *World Applied Sciences Journal*. 22(2) : 234-255.
- [12] Espinoza, Raphael A. and Prasad, A., Nonperforming Loans in the GCC Banking System and Their Macroeconomic Effects (October 2010). IMF Working Papers, Vol. , pp. 1-24, 2010. Available at SSRN: <https://ssrn.com/abstract=1750712>
- [13] Montgomery, D. C., Jennings, C.L., & Murat, K. (2008). *Introduction to Time Series Analysis and Forecasting*. USA : John Wiley & Sons, Inc.
- [14] Gujarati, D. N., & Porter, D.C. (2009). *Basic econometrics*. New York, The McGraw Hill Companies.
- [15] Lutkepohl, H. (2013). Vector Auto Regression Model. In *handbook of research method in empirical macroeconomics* by Nigar H. and Michael A. T. Cheltenham, UK, Edward Elgar Publishing Limited.
- [16] Lutkepohl, H. (2005). *New introduction to multiple time series analysis*. Germany, Springer-Verlag Berlin Heidelberg.
- [17] Tsay, R. S. (2014). *Multivariate time series analysis*. USA, John Wiley & Sons.
- [18] Brandt, P. T., & William, J. T. (2007). *Multiple time series model*. USA, Sage Publication.
- [19] Marcet, A. (2005). *Overdifferencing VAR's is OK*. Universitat Pompeu Fabra. Mimeo.
- [20] Brooks, C. (2008). *Introductory Econometrics for Finance*. New York, Cambridge University Press.
- [21] Engle, Robert F, (1983). "Wald, Likelihood Ratio, and Lagrange Multiplier Test in Econometrics". In Intriligator, M.D.; Griliches, Z. *Handbook of Econometrics*. II. Elsevier. pp. 796-801.