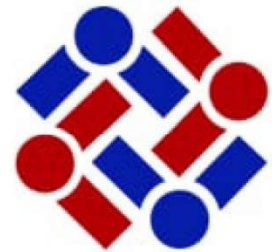


# Proceeding of the 7th International Conference of Science, Technology, and Interdisciplinary Research (IC-STAR 2021)

---

Bandar Lampung, Indonesia • 26–27 October 2021

**Editors** • Misfa Susanto, Fethma M Nor and Ahmad Kafrawi Nasution



RESEARCH ARTICLE | JUNE 02 2023

# Source rock analysis related with the change of organic substances using SEM and TGA method FREE

Bagus Sapto Mulyatno ; Ordas Dewanto; Suharso; ... et. al

 Check for updates

*AIP Conference Proceedings* 2601, 020003 (2023)

<https://doi.org/10.1063/5.0142725>



View Online



Export Citation

CrossMark

## Articles You May Be Interested In

Interaction of TGA with CdSe nanoparticles

*AIP Conference Proceedings* (May 2018)

The effect of catalyst on synthesis of carbon nanotubes: An in situ TGA study

*AIP Conference Proceedings* (June 2012)

Complementary XRD, TEM, TGA studies of carbon nanotube raw soot

*AIP Conference Proceedings* (June 2016)

## AIP Advances

Why Publish With Us?

-  **25 DAYS**  
average time to 1st decision
-  **740+ DOWNLOADS**  
average per article
-  **INCLUSIVE**  
scope

[Learn More](#)



# Source Rock Analysis Related with the Change of Organic Substances using SEM and TGA Method

Bagus Sapto Mulyatno<sup>1, a)</sup>, Ordas Dewanto<sup>1</sup>, Suharso<sup>2</sup>, Muh Sarkowi<sup>1</sup>, Nandi Haerudin<sup>1</sup>, and Rahmat Catur Wibowo<sup>1</sup>

<sup>1</sup>*Geophysics Engineering Department, Engineering Faculty, University of Lampung, Bandar Lampung 35145, Indonesia*

<sup>2</sup>*Chemistry Department, Mathematics and Natural Science Faculty, University of Lampung, Bandar Lampung 35145, Indonesia*

<sup>a)</sup> *Corresponding author: bagusyosodiharjo@yahoo.co.id*

**Abstract.** Several preliminary studies on oil shale have motivated researchers to find out several methods and parameters that underlie the process of converting oil shale into fuel. This process requires several appropriate parameters to react to physical and chemical changes as desired. One related to organic maturity in oil and shale is Tmax, the maximum temperature to release hydrocarbon from the cracking process of oil shale during pyrolysis. Tmax value is used to determine the maturity level of oil shale turning into oil fluid. The time needed to obtain the Tmax value and the character of this converting is influenced by lithology. This study aims to determine the effect of lithology on Tmax in oil shale. This study begins by selecting the type of oil shale according to the purpose, clay, and nature carbonate at a certain depth. After obtaining several oil shale samples, characterization and several tests were carried out using SEM and TGA tools. By knowing the value of Tmax, type of carbonate oil shale, and clay in oil shale, the conversion of oil shale into oil in terms of temperature control can be determined as needed, so there are no errors during the heating process. Something that greatly affects the maximum temperature of oil shale (Tmax) is lithology. Clay is more influential than carbonate and will speed up the change from oil shale to oil and natural gas.

**Keywords:** oil shale, Tmax, SEM, and TGA.

## INTRODUCTION

In the context of new energy exploration, oil shale is a renewable energy that is expected to be used as a future alternative energy [1]. Oil shale is a clay or carbonate material containing immature organics; when heated to a certain temperature, it can produce energy substances such as oil and gas [2,3]. Currently, oil shale is an energy source that is being developed to be used as alternative energy in the future. Kogerman [4] mentions that oil shale research became a research center in the Soviet Union. The establishment of this research institute saw the development of research in oil shale quite rapidly.

The discovery of oil shale by the United States is considered the cause of the shock in world oil prices. The United States, which was originally only a consumer of crude oil, is now a producer. The latest analysis also shows that shale gas could provide up to half of the US gas supply by 2020. Oil shale reserves in Indonesia have begun to be mapped at 53 locations in Indonesia.

In response to this, Indonesian researchers began to research these new energy sources to help overcome the oil and gas crisis. In this study, researchers are trying to find new theories and methods in processing oil shale to be used as the basis for converting oil shale into fuel oil or gas. The theoretical basis used is the level of maturation of hydrocarbons. The temperature required for converting oil shale into oil and gas is called Tmax. This value is influenced by oil shale lithology; therefore, it is necessary to analyze these parameters. The specific objectives of this study were: To analyze the effect of lithology on Tmax in oil shale.

Oil shale is clay or carbonate material that contains organic matter, an energy source that produces oil and gas [3,5]. Oil shale processing residue is also valuable for agriculture and industry [6-8]. Kogerman [4] mentions that oil shale research became a research center in the Soviet Union. Berraja et al. [9] initiated a study on thermal analysis studies on oil shale combustion at Tarfaya. Although the method used is not efficient, the research resulted in a heating theory of the pyrolysis method.

Research by Bartis et al. [10] stated that exploitation of oil shale that has been collected is sent to a processing site by burning the shale directly to be used as a source of electrical energy. Bartis also performs underground oil shale mining using the chamber and pillar method. Then Burnham et al. [11] extracted the results of oil shale processing, which was carried out above ground, even though it was underground *in-situ*.

Determination of temperature on pyrolysis to determine the maturity level and reaction rate analysis [12]. Determination of temperature at the maturation stage and reaction speed from TGA analysis refers to several research results: Katarzyna et al. [13], Himawanto et al. [14], Himawanto [15], Riyanto [16], Emam [17], Marnoto, and Sulistyowati [18], Yan et al. [19], Sugondo [20], Sukma [21], Malika et al. [22], Martono et al. [23], Suyitno [24], Kholisoh [25], Minarsih [26], and Jiang et al. [27].

The urgency of this research is that oil shale gets attention as a new energy source because the price of a conventional oil is increasing, and its quantity is limited. Indonesia has many new energy sources, oil shale, and has begun to be mapped. The development of research for alternative energy is expected to be used commercially as a fuel and as a producer of electrical energy and is relatively cheap for industry and human needs.

This research is a theoretical technology developed to be applied experimentally analytically. This research will produce new theories and methods to convert oil shale to fuel oil or gas, which is expected to help overcome the oil and gas crisis.

## METHOD

### Sites and Equipment

The equipment used is glassware for preparation purposes and rock cutting equipment available at the Chemistry Lab, FMIPA Unila, and Lemigas Jakarta. TGA analysis was carried out at the Biomass Chemistry Laboratory, FMIPA Unila. SEM analysis to determine the concentration of oxide species/characteristics was carried out at the Chemical Biomass Laboratory, FMIPA Unila, and Lemigas Jakarta.

### Materials

1. Nature clay (kaolinite/illite) and carbonate ( $\text{CaCO}_3$ ), two have characteristics as the vessel according to the purpose, obtained from the coring at a certain depth in area X.
2. Carbonate and clay oil shale (good quality).

### Design

This research activity will be carried out entirely by conducting experiments in the laboratory. The detailed and complete implementation of the research is shown in the Research Flowchart in Fig.1.

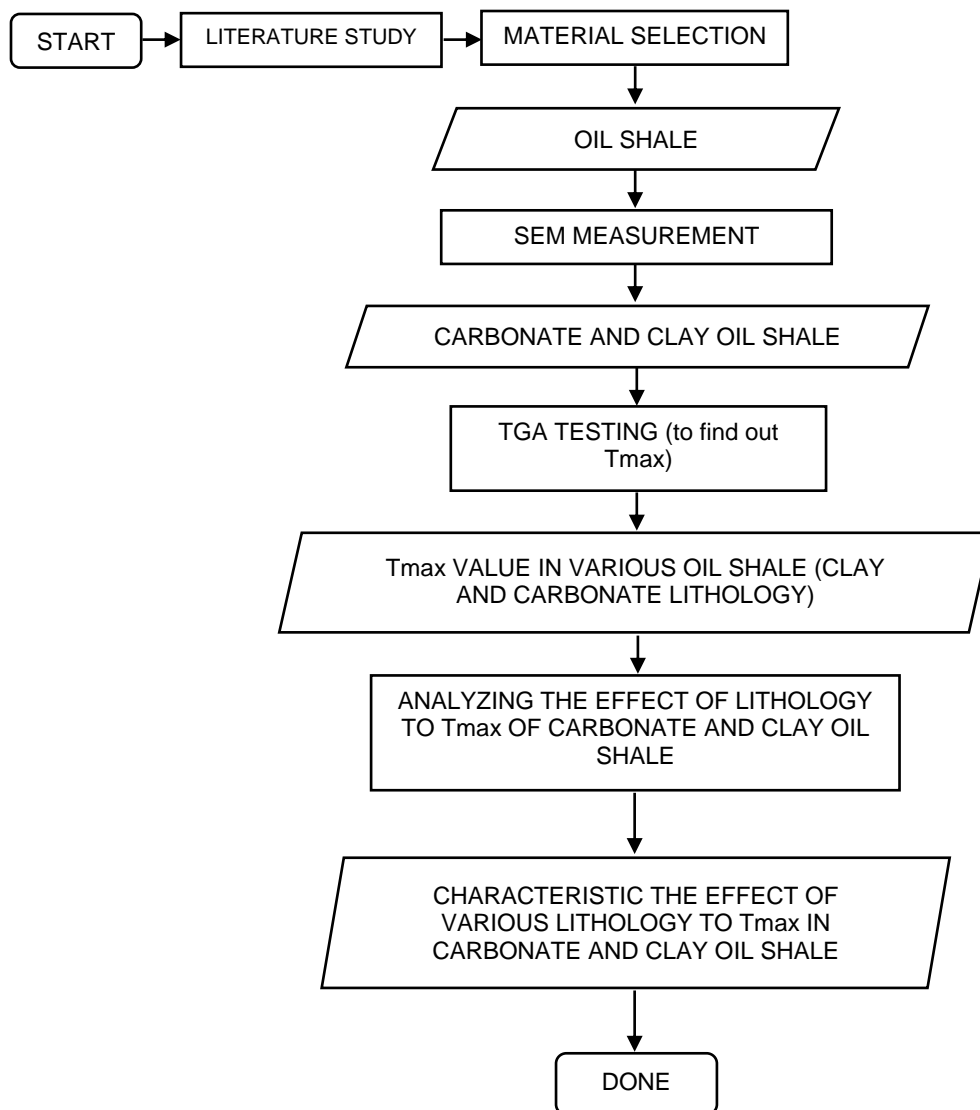


FIGURE.1. Research flow chart

## RESULT AND DISCUSSION

### Analysis Result Using SEM

The shale material that has been selected is then characterized using SEM. The aim is to determine the morphology, particle size, material content, material pores, and the elements contained. The most important characteristic is that the shale material exhibits excellent oil shale properties, according to the reference. Shale material with clay lithology (shown in Fig.2) and shale material with caronic lithology (shown in Fig. 3).

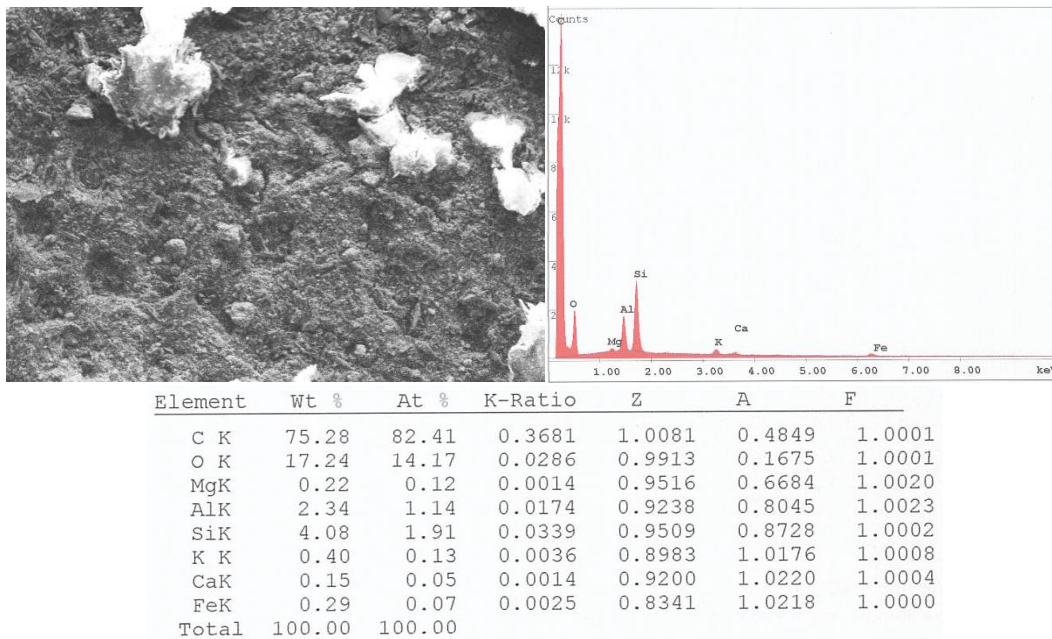


FIGURE. 2. SEM photo on clay lithology oil shale

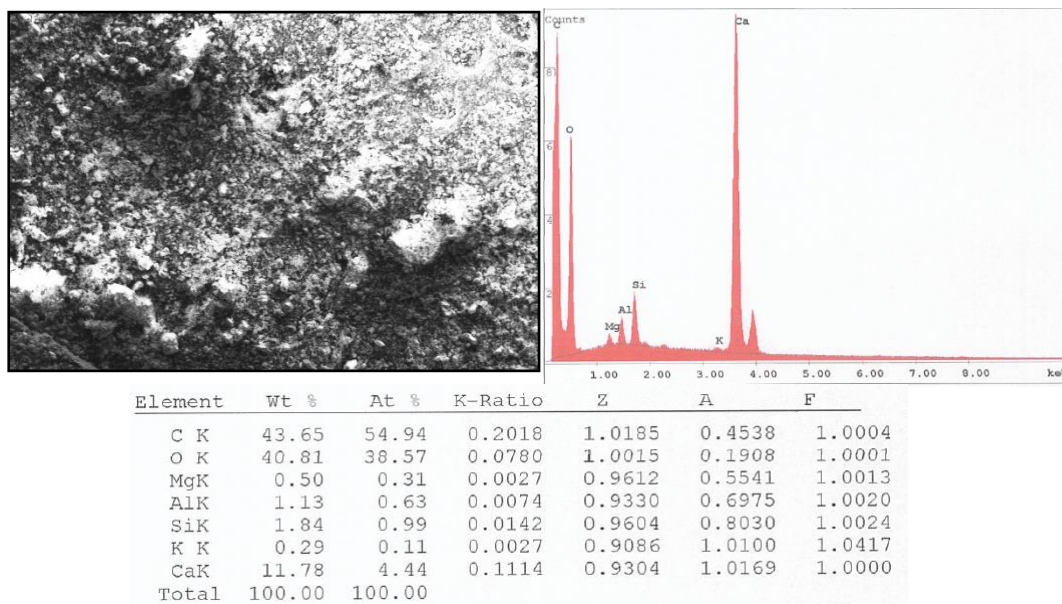


FIGURE. 3. SEM photo on carbonate lithology oil shale

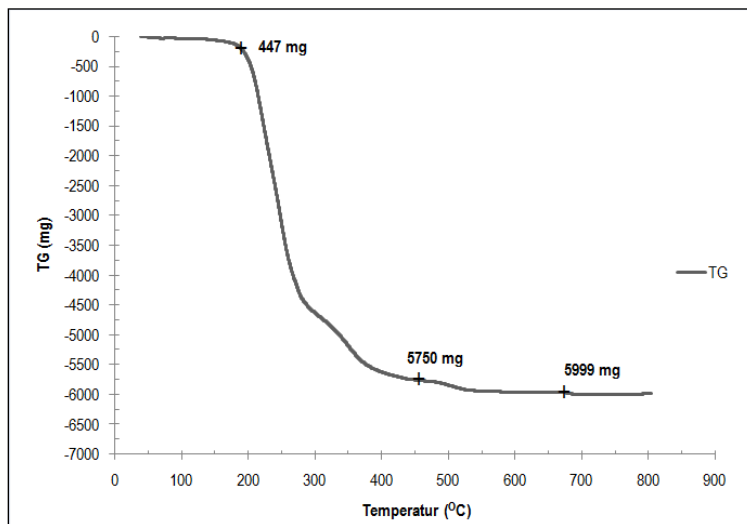
### Analysis Results Using TGA

Thermogravimetry is a technique for measuring the change in weight of a compound as a function of temperature or time. The result is usually a continuous diagram recording, a one-step decomposition reaction. The sample used, weighing several milligrams, is heated at a constant rate, ranging from 1–2 °C/min, maintaining its initial weight,  $W_i$ , until it decomposes at temperature  $T_i$ .

The uses of thermal analysis in solid-state science are many and varied. DTA is generally more valuable than TGA; TGA detects effects involving only mass changes. DTA can also detect this effect and other effects such as

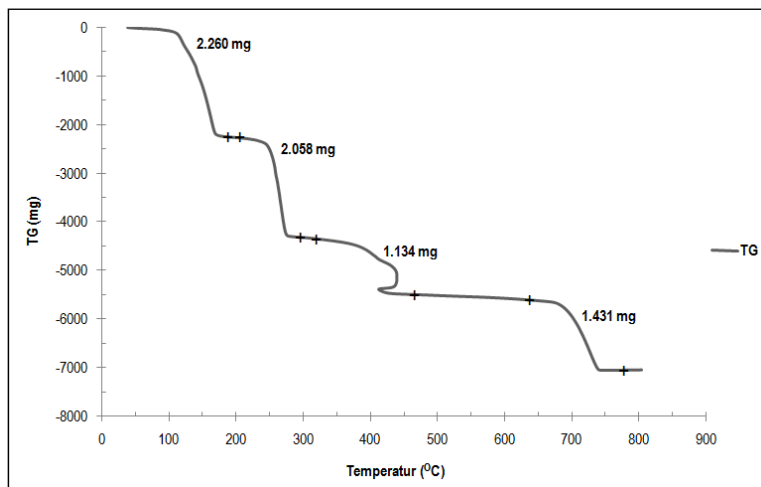
polymorphic transitions, which do not involve weight changes. For many problems, it is advantageous to use DTA and TGA because the thermal events detected in DTA can be classified into various processes involving heavy or not involving weight.

Figure 4 shows the weight loss before decreasing at the last temperature, indicating the maximum temperature required for clay shale to start turning into oil shale. So the temperature required for the conversion process of oil shale into crude oil requires a temperature of  $\pm (285^{\circ}\text{C}-425^{\circ}\text{C})$ .



**FIGURE 4.** Graph of Thermogravimetry Analysis (TGA) for clay shale (clay lithology)

From the results of the TGA test on the carbonate shale material, as shown in Fig. 5, it was found that the last phase change occurred at a temperature of around 650°C. So it was slightly higher than the previous phase change in clay shale. Slightly different from clay flakes, the carbonate shale changes four times in weight. So the temperature required for the process of changing (reaction) oil shale material on carbonate shale into oil shale requires an ambient temperature of  $\pm (320^{\circ}\text{C}-455^{\circ}\text{C})$ .



**FIGURE 5.** Graph of Thermogravimetry Analysis (TGA) for clay shale (carbonate lithology)

From the results of the TGA test, oil shale with clay lithology is faster than carbonate which means lithology greatly affects the maximum temperature of a material ( $T_{\text{max}}$ ) and will accelerate the reaction to change from oil shale to oil and natural gas.

## CONCLUSION

Based on the SEM characteristics, there are two types of oil shale a clay and carbonate oil shale. Lithology greatly affects the maximum temperature, especially on clay and carbonate. Clay has a maximum temperature lower than carbonate and will accelerate the reaction from oil shale to oil and natural gas.

## REFERENCES

1. Mulyanto, B.S., Dewanto, O., and Rizky, S. 2018. Determining Layer Oil Shale as New Alternative Energy Sources Using Core Analysis and Well Log Method. *International Journal of Engineering & Technology*. ISSN: 2227524X. Vol:7, No:4.36. Page: 941-949.
2. Kantsler, A.J., Cook, A.C., and Smith, G.C., 1978. Rank variation, calculated paleotemperatures in understanding oil, gas occurrence. *Oil and Gas Journal*. No. 20, p.196-205.
3. Dewanto, O., Mulyatno, B.S., Rustadi and Wibowo, R.C. 2017. Determining the Temperature of Shale Material Conversion Into Crude Oil Based on Organic Clay and Organic Carbonate Test Outside Reservoir. *International Journal of Mechanical and Mechatronics Engineering, IJMME*. Vol: 17 No: 05. ISSN: 2077-124X (Online), 2227-2771 (Print). Page: 84-89.
4. Kogerman, A. 2001. *Ten Years of Oil Shale*. Estonian Academy Publishers. Oil Shale, Vol. 18, No. 1. ISSN 0208-189X. pp. 1-4.
5. Dewanto, O., Rizky, S., Mulyanto, B.S., Rustadi. 2019. The Maturity Estimation of Material Organic in  $\text{CaCO}_3$  with Determining Tmax and Energy Activation Using Pyrolysis Method. *Journal of Computational and Theoretical Nanoscience*. Volume 16, Number 7. pp. 3054–3065.
6. Barkia, H., Belkbir, L. and Jayaweera, S.A.A. 2004. Thermal analysis studies of oil shale residual carbon. *Journal of Thermal Analysis and Calorimetry*. 76 (2), pp.615-622.
7. AL-Hasan, N. 2006. *Behavior of concrete made using oil shale ash and cement mixtures*. *Oil Shale*. Vol. 23, No. 2, ISSN: 0208-189X pp. 135–143.
8. Al-Hamaiedh, H., Maaitah, O., and Mahadin, S. 2010. *Using Oil Shale Ash in Concrete Binder*. EJGE Vol. 15, Bund. F. P. 601-608.
9. Berraja, T., Barkia, H., Belkbir, L., and Jayaweera, S.A.A. Sept. 1988. Thermal analysis studies of the combustion of Tarfaya oil shale. *Proceeding of an International Conference on Carbon, Carbon'88*, Eds. B. McEnaney and T.J. Mays, Univ. Newcastle Upon Tyne, UK, 18-23.
10. Bartis, James T.; LaTourrette, Tom; Dixon, Lloyd; Peterson, D.J.; Cecchine, Gary (2005) (PDF). *Oil Shale Development in the United States. Prospects and Policy Issues. Prepared for the National Energy Technology Laboratory of the U.S. Department of Energy* ([http://www.rand.org/pubs/monographs/2005/RAND\\_MG414.pdf](http://www.rand.org/pubs/monographs/2005/RAND_MG414.pdf)). The RAND Corporation. ISBN: 978-0-8330-3848-7. Retrieved 2007-06-29.
11. Burnham, Alan K.; McConaghy, James R. (2006-10-16). "Comparison of the Acceptability of Various Oil Shale Processes" (<https://e-reports-ext.llnl.gov/pdf/341283.pdf>) (PDF). 26th Oil Shale Symposium. Golden, Colorado: Lawrence Livermore National Laboratory. UCRL-CONF-226717. Retrieved 2007-06-23.
12. Pogaku, R., Raman, J.K., Ravikumar, G. 2012. Evaluation of Activation Energy and Thermodynamic Properties of Enzyme-Catalysed Transesterification Reactions. *Advances in Chemical Engineering and Science*, 2012, 2, 150-154 <http://dx.doi.org/10.4236/aces.2012.21018> Published Online January 2012 (<http://www.SciRP.org/journal/aces>).
13. Katarzyna Slopiecka, Pietro Bartocci, Francesco Fantozzi. 2011. *Thermogravimetric analysis and Kinetic study of poplar wood pyrolysis*. Third International Conference on Applied Energy. Perugia, Italy. Pages 1687-1698.
14. Himawanto, D.A., Indarto, Saptoadi, H. dan Rohmat, T.A. 2013. Thermogravimetric Analysis of Single-Particle RDF Combustion. *Modern Applied Science*: Vol. 7, No. 11. Hal: 34. ISSN 1913-1844 E-ISSN 1913-1852. [http://www.fossil.energy.gov/programs/reserves/npr/npr\\_oil\\_shale\\_program.html](http://www.fossil.energy.gov/programs/reserves/npr/npr_oil_shale_program.html).
15. Himawanto, D.A. 2013. Penentuan Energi Aktivasi Pembakaran Briket Char Sampah Kota dengan Menggunakan Metoda Thermogravimetry dan Iso Thermal Furnace. *Jurnal Teknik Mesin Rotasi*. Vol. 15, No. 3, hal: 35–42.
16. Riyanto, S. 2009. Uji Kualitas Fisik Dan Uji Kinetika Pembakaran Briket Jerami Padi Dengan Dan Tanpa Bahan Pengikat. Skripsi. Jurusan Teknik Mesin Fakultas Teknik Universitas Sebelas Maret Surakarta.



17. Eman A. Emam. 2013. Clays as Catalysts in Petroleum Refining Industry. *ARPJ Journal of Science and Technology*. Vol.3, No.4, ISSN: 2225-7217. Department of Petroleum Refining Eng. and Petrochemicals, Faculty of Petroleum and Mining Eng., Suez University, Suez, Egypt.
18. Marnoto, T. dan Sulistyowati, E. 2012. *Tinjauan Kinetika Pyrolysis Limbah Polystiren*. Prosiding Seminar Nasional Teknik Kimia. Pengembangan Teknologi Kimia untuk Pengolahan Sumber Daya Alam Indonesia. Teknik Kimia, Fak Teknologi Industri, UPN Veteran Yogyakarta. ISSN: 1693-4393.
19. Yan Y.F., Zhang Z.E., Zhang L. and Zhang L. 2014. Influence of coal properties on the co-combustion characteristics of low-grade coal and city mud. *Global NEST Journal*. Vol. 16, No 2. pp 329-338. Printed in Greece. All rights reserved.
20. Sugondo. 2012. Kinetika Pertumbuhan Butir Paduan Zry-4 Sn Rendah. *Urania*. Vol. 18 No. 3. Hal: 120-181. ISSN 0852-4777
21. Sukma, H.L. 2012. *Analisis Thermogravimetry Dan Pembuatan Briket Tandan Kosong Dengan Proses Pirolisis Lambat*. Tugas Akhir Konversi Energi. Fakultas Teknologi Industri. Institut Teknologi Sepuluh Nopember Surabaya.
22. Malika, A., Mohammed, A. and Boukhelifi, A. 2014. Kinetic And Energy Study Of Thermal Degradation Of Biomass Materials Under Oxidative Atmosphere Using TGA, DTA And DSC. *Journal of Multidisciplinary Engineering Science and Technology (JMEST)*. ISSN: 3159-0040 Vol. 1 Issue 5, December 2014.
23. Martono, Y., Sari, Y.E.P., Hidarto, J. 2012. Penggunaan Model Arrhenius Untuk Pendugaan Masa Simpan Produk Minuman Kemasan Berdasarkan Kandungan Vit C. Paper. Program Studi Kimia, Fakultas Sains dan Matematika. Universitas Kristen Satya Wacana.
24. Suyitno. 2009. Perumusan Laju Reaksi dan Sifat-Sifat Pirolisis Lambat Sekam Padi Menggunakan Metode Analisis Termogravimetri. *Jurnal Teknik Mesin*. Vol. 11, No. 1, April 2009. Hal: 12–18.
25. Kholisoh, S.D. 2011. *Dasar-Dasar Kinetika Reaksi Kimia*. Slide Kinetika Dan Katalisis. Jurusan Teknik Kimia. FTI UPN “VETERAN” Yogyakarta.
26. Minarsih, T. 2011. Penentuan Energi Aktivasi Amlodipin Besilat Pada pH 1, 6 Dan 10 Dengan Metode Kromatografi Cair Kinerja Tinggi. *PHARMACY*. Vol. 06 No. 01 Agustus 2011. ISSN 1693-3591.
27. Jiang, L., Liang, J., Yuan, X., Hui Li, Changzhu Li, Xiao, Z., Huang, H., Wang, H., and Zeng, G. 2014. Co-pelletization of sewage sludge and biomass: The density and hardness of pellet. *Bioresource Technology*. 166 (2014) 435–443. Elsevier Ltd. All rights reserved.