



BULLETIN OF THE MARINE GEOLOGY

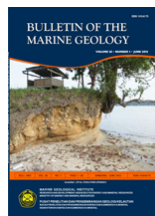
MARINE GEOLOGICAL INSTITUTE OF INDONESIA



[HOME](#) [ABOUT](#) [LOGIN](#) [REGISTER](#) [SEARCH](#) [CURRENT](#) [ARCHIVES](#) [ANNOUNCEMENTS](#)

[Home](#) > [vol 38, no 1 \(2023\)](#)

BULLETIN OF THE MARINE GEOLOGY



Bulletin of the Marine Geology (BoMG), is a scientific journal of Marine geoscience that is published periodically, twice a year (June and December). The publication identification could be recognized on the ISSN 1410-6175 (print) and e-ISSN: 2527-8843 (on-line) twice a year (June & December) and it has been accredited by Ministry of Research, Technology, and Higher Education, Republic Indonesia with Second Grade (Peringkat 2, Sinta 2) since year 2020 to 2024 according to the decree No. 200/M/KPT/2020.

As an open access journal, thus all content are freely available without any charge to the user. Users are allowed to download, and distribute the full texts of the articles without permission from the publisher.

We invite every researcher to publish their work result in an article, and please submit your article [here](#) or go to [login](#) section.

Announcements

No announcements have been published.

[More Announcements...](#)

Vol 38, No 1 (2023)

Table of Contents

Articles

- | | |
|-------------------------------------------------------------------------------------------------------------------------------------------|-----|
| STUDY OF POTENTIAL INSTALLATION OF OCEAN THERMAL ENERGY CONVERSION (OTEC) IN THE NORTH WATERS OF LEMBATA, NTT | PDF |
| Gisela Malya Asoka, Denny Nugroho Sugianto, Yani Permanawati
DOI: 10.32693/bomg.38.1.2023.789 | |
| ACOUSTIC CHARACTERISTICS OF SIDESCAN SONAR ALONG PROPOSED POWER CABLE ROUTE, DUMAI – RUPAT ISLAND | PDF |
| Subarsyah Subarsyah, Sahudin Sahudin
DOI: 10.32693/bomg.38.1.2023.812 | |
| LOW RESISTIVITY PAY DEVELOPMENT: CASE STUDY OF TALANGAKAR FORMATION ASRI BASIN, OFFSHORE SOUTHEAST SUMATRA, INDONESIA | PDF |
| Dwandari Ralanarko, Pranowo Nugroho, Edy Sunardi, Ildrem Syafri, Billy G. Adhiperdana
DOI: 10.32693/bomg.38.1.2023.803 | |
| SUBSURFACE GEOLOGICAL INTERPRETATION OF THE NORTH SUNDA ASRI BASIN BASED ON SVD ANALYSIS AND GRAVITY ANOMALY MODELING | PDF |
| Hayu Nurfaidah, Imam Setiadi, Muhammad Sarkowi, Ordas Dewanto
DOI: 10.32693/bomg.38.1.2023.833 | |

[Author Guidelines](#)

[Aim & Scope](#)

[Editorial Team](#)

[Online Submissions](#)

[Publication Ethics](#)

[Contact Us](#)

User

Username

Password

Remember me

Notifications

[View](#)

[Subscribe](#)



Template



Journal Content

Search

Search Scope

All

Browse

[By Issue](#)

[By Author](#)

[By Title](#)

[Other Journals](#)

Information

[For Readers](#)

[For Authors](#)

LITHOLOGY AND RESERVOIR IDENTIFICATION IN THE "EL" WELL, EAST JAVA USING SEISMIC INVERSION

Maulana Yusuf Ibrahim, Salma Dita Rysqi Puspita, Zhafirah Nurul Syarafina, Shaska
 Ramadhan Zulivandama, Eleonora Agustine
 DOI: [10.32693/bomg.38.1.2023.818](https://doi.org/10.32693/bomg.38.1.2023.818)

Accredited by Ministry of Research, Technology, and Higher Education, Republic Indonesia



Abstracted/Indexed by:



BoMG is licensed under a [Creative Commons Attribution-NonCommercial-NoDerivatives 4.0 International License](https://creativecommons.org/licenses/by-nc-nd/4.0/)

Ministry of Energy and Mineral Resources of the Republic of Indonesia | Energy and Mineral Resources Research and Development Agency

Marine Geological Institute of Indonesia

Website: <http://www.mgi.esdm.go.id>

Online system: <http://ejournal.mgi.esdm.go.id/index.php/BOMG>

Phone: +62 (022) 6032020, 6032201/cf: +62 813-2108-8946; email : ejournal.p3gl@gmail.com

Fax : +62 (022) 6017887

ID	22055
US	11613
CA	4867
VN	4050
IT	2968
FR	2328
SG	1492
RU	1393
DE	1239
IN	1189
Newest:	ZW
You:	ID
Today:	2
Month:	380
Total:	81720
Supercounters.com	

00088053

[View My Stats](#)

Keywords

Alcock Rise Andaman Sea
 Arafura Sea Banten Bay Batam
 Crescentic depression Jakarta
 Bay REE Semarang Swath
 bathymetry bottom current
 contamination core drilling
 current velocity heavy
 metals magnetic
 susceptibility petrophysical
 analysis sediment spectral
 decomposition submarine
 landslide, seafloor infrastructure, eastern
 Indonesia tsunami



BULLETIN OF THE MARINE GEOLOGY

MARINE GEOLOGICAL INSTITUTE OF INDONESIA



HOME ABOUT LOGIN REGISTER SEARCH CURRENT ARCHIVES ANNOUNCEMENTS

Home > Vol 38, No 1 (2023) > [nurfaidah](#)

SUBSURFACE GEOLOGICAL INTERPRETATION OF THE NORTH SUNDA ASRI BASIN BASED ON SVD ANALYSIS AND GRAVITY ANOMALY MODELING

Hayu Nurfaidah, Imam Setiadi, Muhammad Sarkowi, Ordas Dewanto

DOI: <http://dx.doi.org/10.32693/bomg.38.1.2023.833>

Abstract

The Sunda Asri Basin is dominated by normal faults and has little compressional structure. This basin consists of several depocenters with a thickness of up to 6000 m. Among the geophysical methods, gravity analysis has proven to be effective in determining the bedrock configuration and identifying sedimentary basins. This study aims to analyze sedimentary sub-basin patterns, basement height structures, faults, and bedrock configuration using trend surface analysis of polynomial filters. The analysis of polynomial filter show that a 10th-order anomaly yields optimal results. The high correlation value of 0.990925 provides the suitability of a 10th-order anomaly for qualitative interpretation. Spectral analysis results indicate an average bedrock depth of about 2.75 km within the Sunda Asri Basin. Furthermore, this analysis reveals the presence of 14 sedimentary sub-basin patterns in this area. The gravity modeling results indicate that the top layer has a density value of 2.37 g/cc, which interpreted as Pleistocene Tertiary sediment. The second layer consists of Tertiary-Miocene sediment with a density value of 2.28 g/cc, while the third layer comprises of Pre-Tertiary sedimentary rock at a density of 2.02 g/cc. The bottom layer of the model corresponds to metamorphic bedrock with a density 2.7 g/cc. SVD (Second Vertical Derivative) analysis successfully identified the presence of normal and thrust fault structures

Keywords

Gravity, Polynomial Trend Surface Analysis, Second Vertical Derivative (SVD), Sunda Asri Basin

Full Text:

[PDF](#)

References

- Blakely, R.J., 1996. Potential Theory in Gravity and Magnetic Applications. Cambridge University Press.
- Daly, M.C., Cooper, M.A., Wilson, I., Smith, D.G., and Hooper, B. G. D., 1991. Cenozoic Plate Tectonics and Basin Evolution in Indonesia. *Marine and Petroleum Geology*, 8(1):2-21. [https://doi.org/10.1016/0264-8172\(91\)90041-X](https://doi.org/10.1016/0264-8172(91)90041-X).
- Koesoemadinata, R.P., 2004. Regional Setting of The Sunda and Asri Basins. CNOOC SES Ltd. Internal Study. Jakarta.

[Author Guidelines](#)

[Aim & Scope](#)

[Editorial Team](#)

[Online Submissions](#)

[Publication Ethics](#)

[Contact Us](#)

About The Authors

Hayu Nurfaidah

Lampung University
Indonesia

Department of Geophysical
Engineering, Faculty of
Engineering, University of
Lampung

Imam Setiadi

Muhammad Sarkowi

Ordas Dewanto

User

Username

Password

Remember me

Notifications

[View](#)

[Subscribe](#)



Template



Pirttijarvi, M., 2008. Gravity Interpretation and Modeling Software Based on 3-D Block Models. User's guide to version 1.6b. Department of Physics Sciences. University of Oulu. Finlandia.

Setiadi, I., Setyanta, B., and Widijono, B.S., 2018. Delineasi Cekungan Sedimen Sumatra Selatan Berdasarkan Analisis Data Gaya Berat. Jurnal Geologi dan Sumberdaya Mineral, 20(2):93-106.

Sukanto, J., Nunuk, F., Aldrich, J.B., Rinehart, G.P., and Mitchell, J., 1998. Petroleum System of the Asri Basin, Java Sea, Indonesia. 26th Convention and Exhibition Proceedings. Indonesian Petroleum Association, 1998.

Todd, D.F., and Pulunggono, A., 1971. The Sunda Basinal Area, An Important New Oil Province. American Association of Petroleum Geologists Conference. Houston.

Wight, A., Sudarmono, and Imron, A., 1986. Stratigraphic Response to structural Evolution in a Tensional, Back Arc Setting and Its Exploratory Significance: Sunda Basin, West Java Sea. 15th Annual Convention Proceedings. Indonesian Petroleum Association, 1: 77-100.

Yan, M., Zhang, Y., Bocobo, G.A., Su, Q., Zhu, K., Zhang, Q., and Tan, J., 2020. A novel tissue separation method for determining upper trunk

center of gravity in patients with thoracolumbar 71(2020), 101-106. [https://doi.org/10.1016/ kyphosis using MIMICS. Clinical Biomechanics, j.clinbiomech.2019.11.002.](https://doi.org/10.1016/j.clinbiomech.2019.11.002)

DOI: <http://dx.doi.org/10.32693/bomg.38.1.2023.833>

Accredited by Ministry of Research, Technology, and Higher Education, Republic Indonesia



Abstracted/Indexed by:



Journal Content

Search

Search Scope

Search

Browse

[By Issue](#)

[By Author](#)

[By Title](#)

[Other Journals](#)

Information

[For Readers](#)

[For Authors](#)

[For Librarians](#)

ID	22055
US	11613
CA	4867
VN	4050
IT	2968
FR	2328
SG	1492
RU	1393
DE	1239
IN	1189
Newest:	ZW
You:	ID
Today:	2
Month:	380
Total:	81720
Supercounters.com	

00088054

[View My Stats](#)

Keywords

Alcock Rise Andaman Sea
 Arafura Sea Banten Bay Batam
 Crescentic depression Jakarta
 Bay REE Semarang Swath
 bathymetry bottom current
 contamination core drilling
 current velocity heavy
 metals magnetic
 susceptibility petrophysical
 analysis sediment spectral
 decomposition submarine
 landslide, seafloor infrastructure, eastern
 Indonesia tsunami



BoMG is licensed under a [Creative Commons Attribution-NonCommercial-NoDerivatives 4.0 International License](#)

[Ministry of Energy and Mineral Resources of the Republic of Indonesia](#) | [Energy and Mineral Resources Research and Development Agency](#)

[Marine Geological Institute of Indonesia](#)

Website: <http://www.mgi.esdm.go.id>

Online system: <http://ejournal.mgi.esdm.go.id/index.php/BOMG>

Phone: +62 (022) 6032020, 6032201/cf: +62 813-2108-8946; email : ejournal.p3gl@gmail.com

Fax : +62 (022) 6017887



BULLETIN OF THE MARINE GEOLOGY

MARINE GEOLOGICAL INSTITUTE OF INDONESIA



[HOME](#) [ABOUT](#) [LOGIN](#) [REGISTER](#) [SEARCH](#) [CURRENT](#) [ARCHIVES](#) [ANNOUNCEMENTS](#)

[Home](#) > [about the journal](#)

About the Journal

People

- [Contact](#)
- [Editorial Team](#)

Policies

- [Focus and Scope](#)
- [Section Policies](#)
- [Peer Review Process](#)
- [Publication Frequency](#)
- [Open Access Policy](#)
- [Archiving](#)

Submissions

- [Online Submissions](#)
- [Author Guidelines](#)
- [Copyright Notice](#)
- [Privacy Statement](#)

Other

- [Journal Sponsorship](#)
- [Site Map](#)
- [About this Publishing System](#)

[Author Guidelines](#)

[Aim & Scope](#)

[Editorial Team](#)

[Online Submissions](#)

[Publication Ethics](#)

[Contact Us](#)

User

Username

Password

Remember me

Notifications

[View](#)

[Subscribe](#)



Template



Journal Content

Search

Search Scope

Browse

[By Issue](#)

[By Author](#)

[By Title](#)

[Other Journals](#)

Information

[For Readers](#)

[For Authors](#)

Accredited by Ministry of Research, Technology, and Higher Education, Republic Indonesia



Abstracted/Indexed by:



For Librarians

ID	22055
US	11613
CA	4867
VN	4050
IT	2968
FR	2328
SG	1492
RU	1393
DE	1239
IN	1189
Newest:	ZW
You:	ID
Today:	2
Month:	380
Total:	81720
Supercounters.com	



BoMG is licensed under a [Creative Commons Attribution-NonCommercial-NoDerivatives 4.0 International License](https://creativecommons.org/licenses/by-nc-nd/4.0/)

Ministry of Energy and Mineral Resources of the Republic of Indonesia | Energy and Mineral Resources Research and Development Agency

Marine Geological Institute of Indonesia

Website: <http://www.mgi.esdm.go.id>

Online system: <http://ejournal.mgi.esdm.go.id/index.php/BOMG>

Phone: +62 (022) 6032020, 6032201/cf: +62 813-2108-8946; email : ejournal.p3gl@gmail.com

Fax : +62 (022) 6017887

00088055

[View My Stats](#)

Keywords

Alcock Rise Andaman Sea
 Arafura Sea Banten Bay Batam
 Crescentic depression Jakarta
 Bay REE Semarang Swath
 bathymetry bottom current
 contamination core drilling
 current velocity heavy
 metals magnetic
 susceptibility petrophysical
 analysis sediment spectral
 decomposition submarine
 landslide, seafloor infrastructure, eastern
 Indonesia tsunami



BULLETIN OF THE MARINE GEOLOGY

MARINE GEOLOGICAL INSTITUTE OF INDONESIA



[HOME](#) [ABOUT](#) [LOGIN](#) [REGISTER](#) [SEARCH](#) [CURRENT](#) [ARCHIVES](#) [ANNOUNCEMENTS](#)

[Home](#) > [About the Journal](#) > [editorial team](#)

Editorial Team

Editor-in-chief

Dr. Luli Gustiantini, S.T., M.T., Marine Geological Institute, Indonesia

Vice Editor-in-chief

Imam Setiadi, S.Si., M.T., Marine Geological Institute, Indonesia

Boards Member

Mrs. Siti Marina, S.T., M.Phil., Marine Geological Institute, Indonesia

Mrs. Dr. rer. Nat. Maria Sekar P., M.Sc., S.T.

Shaska Ramadhan Zulivandama, S.T., M.T., Marine Geological Institute

Mrs. Dra. Ai Yuningsih, Puslitbang Geologi Kelautan, Indonesia

Y Firdaus, Marine Geological Institute

Dr. Eng. BUDI MULJANA, ST., MT, Padjadjaran University, Indonesia

Andrian Wilyan Djaja, S.Si., M.T.

M. Andri Syahrir, S.T.

Sonny Mawardi, S.T., Marine Geological Institute of Indonesia, Indonesia

Dr. Noor CD Aryanto, BRIN, Indonesia

Tumpal Bernhard Nainggolan, ST., MT., Marine Geological Institute, Indonesia

Nazar Nurdin, ST., MT., Marine Geological Institute, Indonesia

Peer Reviewers

Prof. Dr. Sismanto Sismanto, Gadjah Mada University, Indonesia

Prof. Dr. Emmy Suparka, Bandung Institute of Technology, Indonesia

Dr. Haryadi Permana, Research Center for Geotechnology - LIPI, Indonesia

Dr. Totok Suprijo, Bandung Institute of Technology, Indonesia

Dr. Eng. BUDI MULJANA, ST., MT, Padjadjaran University, Indonesia

Dr.rer.nat. Rima Rachmayani, Bandung Institute of Technology, Indonesia

Dr. Dini Fitriani, Padjadjaran University, Indonesia

Prof. Dr. XU Jian, Department of Geology, Northwest University, China

Dr. Ir. Iyan Haryanto, MT., Padjadjaran University, Indonesia

Ir. Subaktian Lubis, M.Sc., Bandung Institute of Technology, Indonesia

Ir. Herman Darman, M.Sc., PT. Eksindo Pratama, Indonesia

Dr. Dardji Noeradi, Bandung Institute of Technology, Indonesia

Lili Sarmili, M.Sc., Marine Geological Institute, Indonesia

Dra. Nenen Adriyani, M.A., Center of Geological Survey, Indonesia

Dr. Gee Soo Kong, Korea Institute of Geoscience and Mineral Resources, Korea, Republic of

Dr. Tri Prartono, Bogor Agricultural University, Indonesia

Dr. Denis Cukur, Korea Institute of Geoscience and Mineral Resources, Korea, Republic of

Ir. Dida Kusnida, M.Sc., Pusat Penelitian dan Pengembangan Geologi Kelautan, Indonesia

Dr. Vijaya Isnaniawardhani, Faculty of Geology, Padjadjaran University, Indonesia

Dr. Maruf M. Mukti, Research Center for Geotechnology LIPI

Dr. Johannes Hutabarat, Padjadjaran University, Indonesia

[Author Guidelines](#)

[Aim & Scope](#)

[Editorial Team](#)

[Online Submissions](#)

[Publication Ethics](#)

[Contact Us](#)

User

Username

Password

Remember me

Notifications

[View](#)

[Subscribe](#)



Template



Journal Content

Search

Search Scope

All

Browse

[By Issue](#)

[By Author](#)

[By Title](#)

[Other Journals](#)

Information

[For Readers](#)

[For Authors](#)

Dra. Kresna Tri Dewi, M.Sc., Centre of Geological Survey, Indonesia
 Dr. Sigid Hariyadi, Institut Pertanian Bogor (IPB), Indonesia
 Dr. Fatkhan Fatkhan, Bandung Institute of Technology, Indonesia
 Prof. Dr. Ir. Ildrem Syafri, DEA, Universitas Padjadjaran, Bandung, Indonesia
 R. Dwi Susanto, PhD., Department of Atmospheric and Oceanic Science University of Maryland, United States
 Dr. Winantris Winantris, Padjadjaran University, Bandung, Indonesia

For Librarians

ID	22055
US	11613
CA	4867
VN	4050
IT	2968
FR	2328
SG	1492
RU	1393
DE	1239
IN	1189
Newest:	ZW
You:	ID
Today:	2
Month:	380
Total:	81720
Supercounters.com	

Accredited by Ministry of Research, Technology, and Higher Education, Republic Indonesia



00088056

View My Stats

Keywords

Alcock Rise Andaman Sea
 Arafura Sea Banten Bay Batam
 Crescentic depression Jakarta
 Bay REE Semarang Swath
 bathymetry bottom current
 contamination core drilling
 current velocity heavy
 metals magnetic
 susceptibility petrophysical
 analysis sediment spectral
 decomposition submarine
 landslide, seafloor infrastructure, eastern
 Indonesia tsunami

Abstracted/Indexed by:



BoMG is licensed under a [Creative Commons Attribution-NonCommercial-NoDerivatives 4.0 International License](https://creativecommons.org/licenses/by-nc-nd/4.0/)

Ministry of Energy and Mineral Resources of the Republic of Indonesia | Energy and Mineral Resources Research and Development Agency

Marine Geological Institute of Indonesia

Website: <http://www.mgi.esdm.go.id>

Online system: <http://ejournal.mgi.esdm.go.id/index.php/BOMG>

Phone: +62 (022) 6032020, 6032201/cf: +62 813-2108-8946; email : ejournal.p3gl@gmail.com

Fax : +62 (022) 6017887

SUBSURFACE GEOLOGICAL INTERPRETATION OF THE NORTH SUNDA ASRI BASIN BASED ON SVD ANALYSIS AND GRAVITY ANOMALY MODELING

INTERPRETASI GEOLOGI BAWAH PERMUKAAN CEKUNGAN SUNDA ASRI BAGIAN UTARA BERDASARKAN ANALISIS SVD DAN PEMODELAN ANOMALI GAYABERAT

Hayu Nurfaidah^{1*}, Imam Setiadi², Muhammad Sarkowi¹ and Ordas Dewanto¹

¹ Department of Geophysical Engineering, Faculty of Engineering, University of Lampung, Jl. Prof. Dr. Ir Sumantri Brojonegoro, Bandar Lampung, 35141

² Marine Geological Institute, Jl. Djunjunan No. 236, Husein Sastranegara Bandung 40174

*Corresponding author: hayunurfaidah@gmail.com

(Received 25 May 2023; in revised form 30 May 2023; accepted 21 June 2023)

DOI : 10.32693/bomg.38.1.2023.833

ABSTRACT: The Sunda Asri Basin is dominated by normal faults and has little compressional structure. This basin consists of several depocenters with a thickness of up to 6000 m. Among the geophysical methods, gravity analysis has proven to be effective in determining the bedrock configuration and identifying sedimentary basins. This study aims to analyze sedimentary sub-basin patterns, basement height structures, faults, and bedrock configuration using trend surface analysis of polynomial filters. The analysis of polynomial filter show that a 10th-order anomaly yields optimal results. The high correlation value of 0.990925 provides the suitability of a 10th-order anomaly for qualitative interpretation. Spectral analysis results indicate an average bedrock depth of about 2.75 km within the Sunda Asri Basin. Furthermore, this analysis reveals the presence of 14 sedimentary sub-basin patterns in this area. The gravity modeling results indicate that the top layer has a density value of 2.37 g/cc, which interpreted as Pleistocene Tertiary sediment. The second layer consists of Tertiary-Miocene sediment with a density value of 2.28 g/cc, while the third layer comprises of Pre-Tertiary sedimentary rock at a density of 2.02 g/cc. The bottom layer of the model corresponds to metamorphic bedrock with a density 2.7 g/cc. SVD (Second Vertical Derivative) analysis successfully identified the presence of normal and thrust fault structures

Keywords: Gravity, Polynomial Trend Surface Analysis, Second Vertical Derivative (SVD), Sunda Asri Basin

ABSTRAK: Cekungan Sunda Asri didominasi oleh sesar normal dan memiliki sedikit struktur kompresional. Cekungan ini terdiri dari beberapa deposenter dengan ketebalan hingga 6000 m. Di antara metode geofisika, analisis gayaberat terbukti efektif digunakan untuk menentukan konfigurasi batuan dasar dan mengidentifikasi cekungan sedimen. Penelitian ini bertujuan untuk menentukan pola sub-cekungan sedimen, struktur tinggian, patahan, dan konfigurasi batuan dasar menggunakan analisis filter permukaan dengan tren polinomial. Analisis filter polinomial menunjukkan bahwa anomali orde 10 menghasilkan keluaran yang optimal. Nilai korelasi tinggi sebesar 0,990925 memberikan bukti bahwa anomali orde 10 cocok untuk interpretasi kualitatif. Analisis spektral menunjukkan kedalaman batuan dasar rata-rata Cekungan Sunda Asri sekitar 2,75 Km. Hasil analisis juga mengungkapkan adanya 14 pola sub-cekungan sedimen di daerah ini. Pemodelan gayaberat menunjukkan bahwa lapisan teratas memiliki nilai densitas 2,37 g/cc, yang diinterpretasikan sebagai sedimen Pleistosen Tersier. Lapisan kedua terdiri dari sedimen Tersier-Miosen dengan nilai densitas 2,28 g/cc, sedangkan lapisan ketiga merupakan batuan sedimen Pra-Tersier dengan densitas 2,02 g/cc. Lapisan terbawah pada model tersusun dari batuan dasar metamorf dengan densitas 2,7 g/cc. Analisis SVD (Second Vertical Derivative) berhasil mengidentifikasi adanya struktur patahan naik dan patahan turun.

Kata Kunci: Gaya Berat, Polynomial Trend Surface Analysis, Second Vertical Derivative (SVD), Cekungan Sunda Asri.

INTRODUCTION

The Sunda Basin, located about 30 miles southwest of the Asri Basin, or 30 miles northwest of Jakarta, is an offshore area in the Java Sea. The Sunda Basin extends northeastward, transforming into the Asri Basin, and is structurally separated by the Seribu Heights. In terms of regional context, the Asri Basin is positioned at the southeastern tip of the Eurasian Plate and specifically

belongs to the Sunda Microplate (Todd and Pulunggono, 1971).

The Sunda Basin is an extension of the Northern Java Basin, known as the Asri Sub-basin. The Sunda Basin originates from the back-arc depocenter which is called the back-arc depocenter of Java Island. The faults trending northwest-southeast and north-south are active and act as basin boundaries (Daly, 1991).

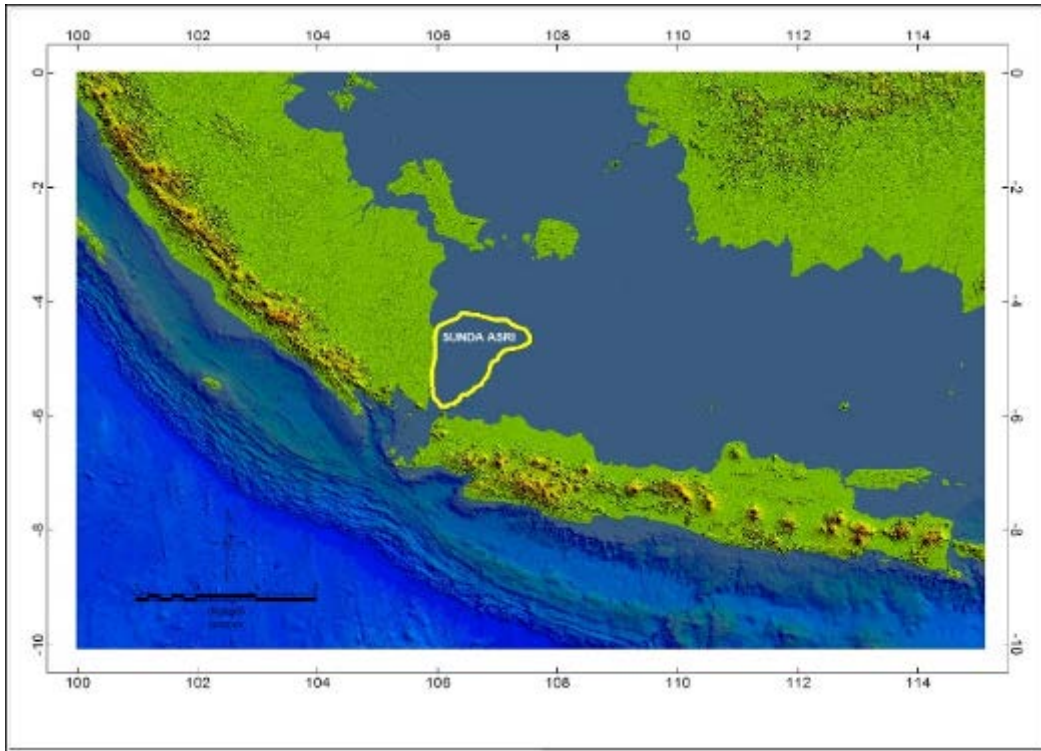


Figure 1. Location of Research Area Sunda Asri Basin

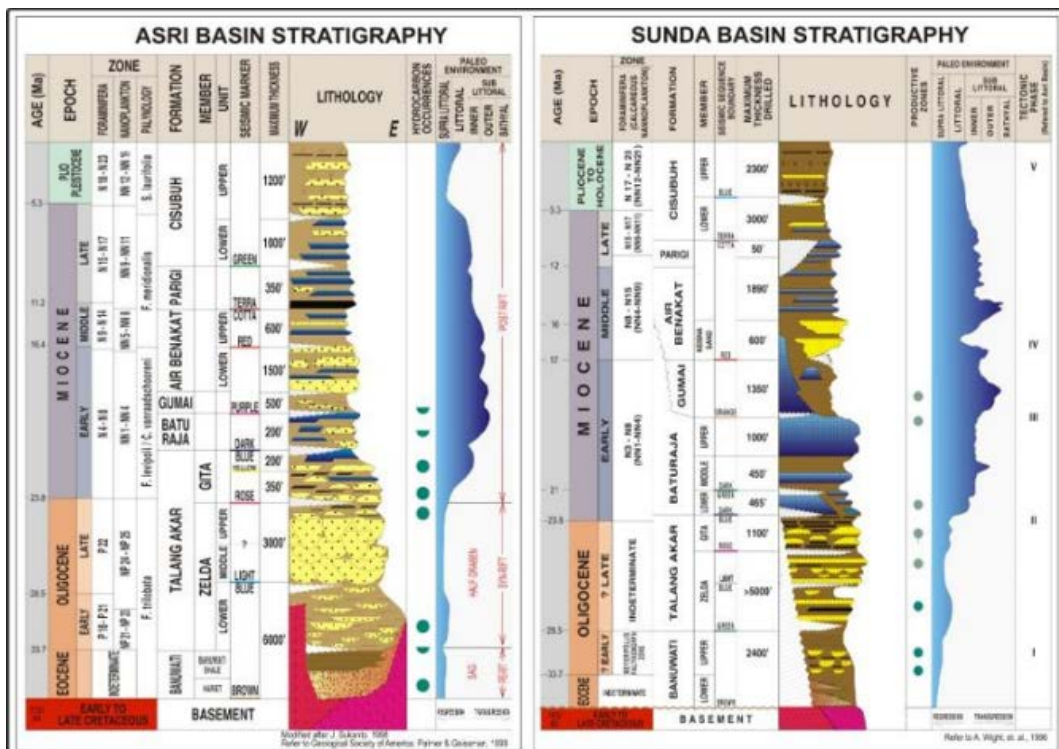


Figure 2. Figure 2. Stratigraphy of the Asri Sunda Basin (Wight et al., 1986)

According to Koesoemadinata (2004), the oldest rocks in the Sunda Asri Basin are bedrock consisting of metamorphic and igneous rocks. Meanwhile, according to Sukanto (1998), the stratigraphy of the Sunda Asri Basin shows a mega cycle of base level rise (Banuwati - Gumai Formation) and base level fall (Air Benakat Formation - Cisubuh).

The gravity method is a geophysical method that utilizes the Earth's gravitational field due to variations in rock mass density. The basic principle of this method is to measure the variation in the value of the gravitational acceleration caused by differences in the density of rock masses beneath the Earth's surface (Yan et al., 2020).

METHODS

The data used in this study comprises corrected Bouguer anomaly data for the Sunda Asri Basin area, collected by the Geological Agency in 2009. Data processing involved spectral analysis of corrected Bouguer anomaly data to obtain bedrock depth and window width used as a reference in modeling. Filtering uses Polynomial Trend Surface Analysis by filtering polynomials from orders 1 to 12. The selection of the optimal polynomial order was based on correlating regional anomalies derived from the polynomial results with regional anomaly references obtained from low pass filtering through spectral analysis. The correlation results show that the 10th order polynomial has the highest correlation value, so the 10th-order regional anomaly is used as the optimal filter result, which is then used to conduct a qualitative interpretation.

The gravity method is a geophysical method that utilizes the Earth's gravitational field due to variations in rock mass density. The basic principle of this method is to measure the variation in the value of the gravitational acceleration caused by differences in the density of rock masses beneath the Earth's surface (Yan et al., 2020). The 10th-order residual anomaly results are used to delineate the sedimentary sub-basin and the basement height of the study area. The residual anomaly results are also used to create cross sections for 2D modeling, which help in determining the fault structure of the study area using SVD (Second Vertical Derivative) analysis.

Spectral Analysis

The spectral analysis results obtain a graph of the wave number (k) as the x-axis with the amplitude ($\ln A$) as the y-axis. In the gravity method, the spectrum is derived from the observed gravity potential in a horizontal plane (Blakely, 1996) as described by:

$$A = Ce^{k(z_0 - z_1)} \quad (1)$$

$$\ln A = \ln 2\pi Gme^{k(z_0 - z_1)} \quad (2)$$

$$\ln A = (z_0 - z_1)|k| + \ln C \quad (3)$$

The equation is analogous to the equation of a straight line:

$$y = mx + c \quad (4)$$

Where $\ln A$ is the y-axis, $|k|$ is the x-axis, and the slope of the line represents gradient. The window width is formulated as follows:

$$N = \frac{2\pi}{k_c \Delta x} \quad (5)$$

Polynomial Trend Surface Analysis

The process of separating regional and residual anomalies in research using a polynomial trend analysis filter involves utilizing the optimal order correlation results to obtain regional anomalies. The Trend Surface Analysis (TSA) equation is as follows:

$$Z_{obs_i} = f(x_i, y_i) + u_i \quad (6)$$

The polynomial method can be approximated by Bouguer anomaly with the following equation:

$$G_{ij} = (ax_i + by_j + c) + e_{ij} \quad (7)$$

$$e_{ij} = G_{ij} - (ax_i + by_j + c) \quad (8)$$

Where G_{ij} is the Bouguer anomaly, x_i is the measurement coordinate in the x-direction, y_j is the measurement coordinate in the y-direction, e_{ij} is the residual anomaly, and a, b, c are polynomial constants.

2D and 3D modeling are conducted to examine the horizontal and vertical continuity of the structure in the study area. The results of 3D inversion modeling provide an overview of subsurface conditions based on density distribution and enhance subsurface model information obtained from 2D modeling. Inversion modeling is performed using the Grablox software (Pirttijarvi, 2008).

Second Vertical Derivative (SVD) analysis was carried out to determine the boundaries of the basin or to determine the types of faults present in the study area. In the SVD graph, the line drawn at point 0 indicates the presence of a fault structure. The direction of the slope of the SVD curve can indicate the type of fault, with maximum and minimum SVD values given by the following equation:

$$\text{For Thrust Fault } \left(\frac{\partial^2 \Delta g}{\partial x^2}\right)_{max} < \left|\left(\frac{\partial^2 \Delta g}{\partial x^2}\right)\right|_{min} \quad (9)$$

$$\text{For Normal Fault } \left(\frac{\partial^2 \Delta g}{\partial x^2}\right)_{max} > \left|\left(\frac{\partial^2 \Delta g}{\partial x^2}\right)\right|_{min} \quad (10)$$

RESULTS

The Bouguer anomaly in the Sunda Asri Basin is shown in Figure 3. The figure illustrates low anomalies indicated by blue shades, while high anomalies are represented by red to purple colors. Based on the Bouguer

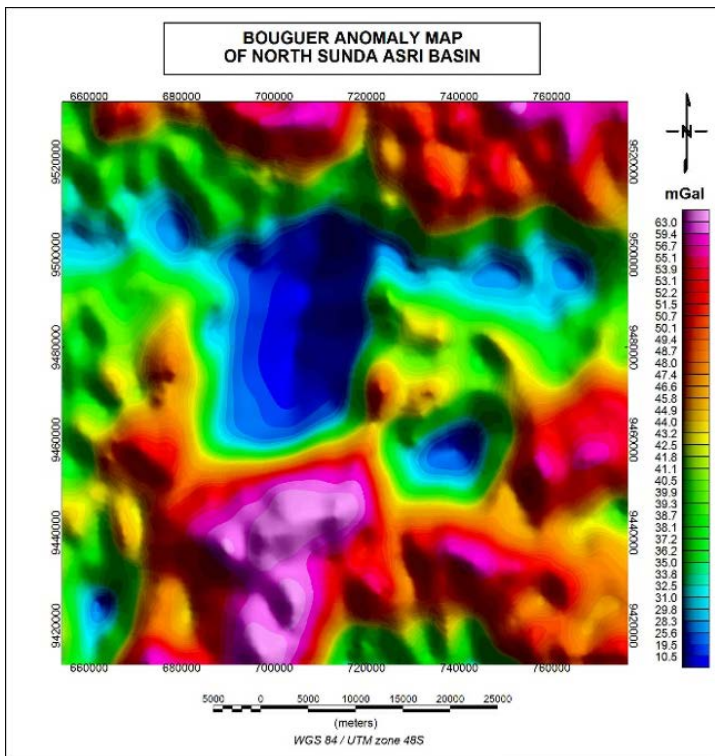


Figure 3. Bouguer Anomaly Map of North Sunda Asri Basin

anomaly map, the anomalous values range from 10.5 to 63.0 mGal. The low anomaly shown in blue ranges between 10.5 to 31.0 mGal, suggesting the presence of relatively thick sedimentary rock that occupies this area. The moderate anomaly, with values ranging from 32.5 to 48.7 mGal, is interpreted as the edge of the basin which delineating the sub-basins. The high anomaly, ranging from 49.4 to 63.0 mGal indicates the presence of uplifted high-density rocks. The Bouguer Anomaly map does not a

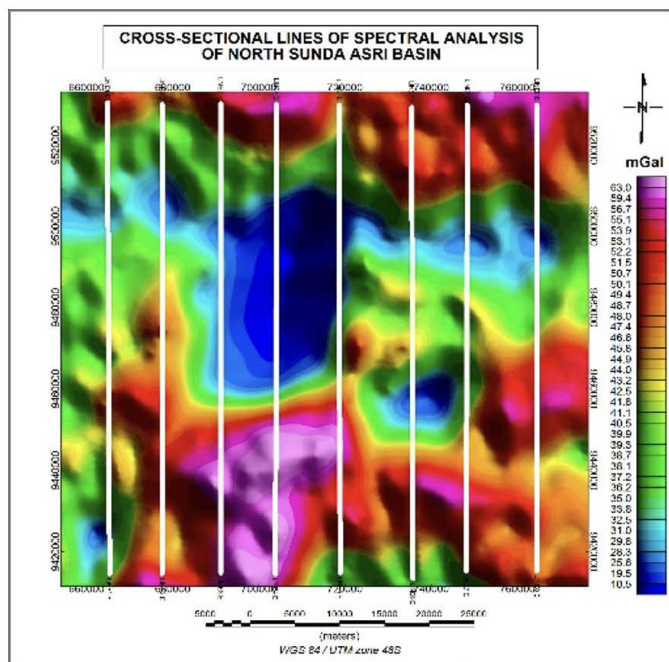


Figure 4. Cross-sectional lines of spectral analysis and the graph of $\ln A$ vs k of Line 7

detailed description of the local structure in the study area, as it combines both regional anomalies and residual anomalies. Therefore, it is necessary to separate these anomalies.

Spectral analysis was carried out to estimate the basement depth and window width of the study area. In this study, 8 cross-sectional tracks were created with a spacing (x) of 2 km, as shown in Figure 4. The slope or gradient of the line on the graph of $\ln A$ vs k represents the depth of the discontinuity plane. The width of the window used in the spectral analysis results is then applied in the filtering process, including lowpass and highpass filters. The separated anomalies obtained using the lowpass and highpass filters are used as a reference for the correlation process to determine anomalous pattern generated by the trend surface polynomial filter.

Anomaly separation using the trend surface polynomial filter is carried out by selecting the optimal order of the correlation results between regional anomalies from spectral analysis and polynomial trend surface analysis in the study area, as seen in Table 2. Complete data processing was carried out using Surfer software, DOS-BOX, and Matlab.

Regional and residuals anomalies of the 10th order polynomial results are shown in Figure 5. The regional anomalies of the 10th order range from 14.8 to 60.9 mGal. The low anomaly is represented by dark to light blue shades, ranging from 14.8 to 32.3 mGal. The medium anomaly, indicated by green to orange colors, has values ranging from 33.6 to 49.1 mGal. The high anomaly, shown by red to purple colors, ranges from 49.7 to 60.9 mGal.

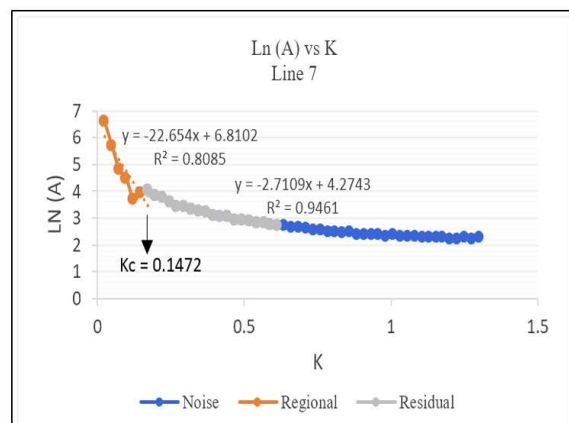


Table 1. The depth of the regional and residual discontinuity planes

<i>No</i>	<i>Line</i>	<i>Regional (km)</i>	<i>Residual (km)</i>	<i>Kc</i>	<i>N</i>
1	Line 1	-21.467	-2.8254	0.1472	21.33
2	Line 2	-26.351	-2.8704	0.1227	25.59
3	Line 3	-13.66	-2.8876	0.1718	18.27
4	Line 4	-18.47	-2.9763	0.1472	21.33
5	Line 5	-22.259	-2.8523	0.1472	21.33
6	Line 6	-20.235	-2.6002	0.1472	21.33
7	Line 7	-22.654	-2.7109	0.1472	21.33
8	Line 8	-26.466	-2.239	0.1718	18.27
Average		-21,45	-2,75	0,15	21,1

Table 2. Regional anomaly correlation results from the spectral and polynomial analysis

<i>No</i>	<i>Order Polynomial</i>	<i>Correlation Results</i>
1	Polynomial Order 2	0,977892
2	Polynomial Order 3	0,986113
3	Polynomial Order 4	0,989687
4	Polynomial Order 5	0,991596
5	Polynomial Order 6	0,993682
6	Polynomial Order 7	0,996608
7	Polynomial Order 8	0,997768
8	Polynomial Order 9	0,998844
9	Polynomial Order 10	0,998925
10	Polynomial Order 11	0,998392
11	Polynomial Order 12	0,998190

The 10th order residual anomaly map shows values ranging from -8.4 to 8.0 mGal. The low anomaly ranges between -8.4 to -3.8 mGal, while the medium spans from -3.4 to 1.8 mGal. The high anomaly is observed from 2.1 to 8.0 mGal.

The regional anomaly pattern obtained using this polynomial still have a trend similar to the complete Bouguer anomaly. It reveals anomalous sources effect at relatively shallow depths, as indicated by the presence of with both positive and negative anomalies. The North Sunda Asri Basin shows a north-south trend, likely formed by the subduction of the Indo-Australian plate to the east. This subduction process created a half-graben structure along the southern edge of the Sunda Plate during the Eocene-Oligocene period.

The lineament pattern and delineation of the Sunda Asri basin were determined based on the best filtering process of the residual anomaly, specifically utilizing the results of a 10th order polynomial filter, as shown in Figure 6. The lineament patterns of basement high have a relative north-south direction, possibly caused by the movement of the Indian Ocean crust from west to east, resulting in a high structure with a relative north-south direction. Setiadi et al. (2018) suggests that the high anomaly pattern likely caused by uplift due to tectonic events and compressional processes between plates. The analysis of residual anomalies indicates that these height patterns separate the sub-basins within the Sunda Asri basin, particularly at the blue low anomaly. The sub-basin in the Sunda Asri basin area probably formed due to openings in a relatively north-south direction, resulting in

the formation of sub-basins with a similar orientation. A total of 14 sub-basins can be delineated based on the residual anomalies of the Sunda Asri basin.

Quantitative interpretation involves conducting 2D and 3D modeling to determine the shape and dimensions of the subsurface geological model. The 2D modeling is carried out along two paths, namely the AA' and BB' paths. The AA' path has a relatively northwest-southeast direction, while the cross section of the BB' path has a west-east relative direction, as shown in Figure 7.

The 2D modeling was performed using GM-SYS Oasis Montaj software, considering the stratigraphic references of the study area and depth information obtained from the spectral analysis results. Modeling process involved simplifying several formations into one-layer models based on the stratigraphic information. The first layer, consisting of the Air Benakat, Parigi, and Cisubuh formations, reveals lithologies such as claystone, sandstone, shale, and limestone, with an average density value of 2.37 g/cc. The second layer comprises the Baturaja Formation and Gumai, characterized by lithologies including limestone, claystone, shale, silt, and sandstone, with an average density value of 2.28 g/cc. The third layer consist of the Banuwati and Talang Akar formations, showing lithologies such as claystone, sandstone, and a small amount of coal content, with an average density value of 2.02 g/cc. Finally, the fourth layer represents the basement, composed of metamorphic igneous rock with an average density value of 2.71 g/cc.

The results of the SVD modeling and analysis in Figure 7 reveal the presence of normal and thrust fault

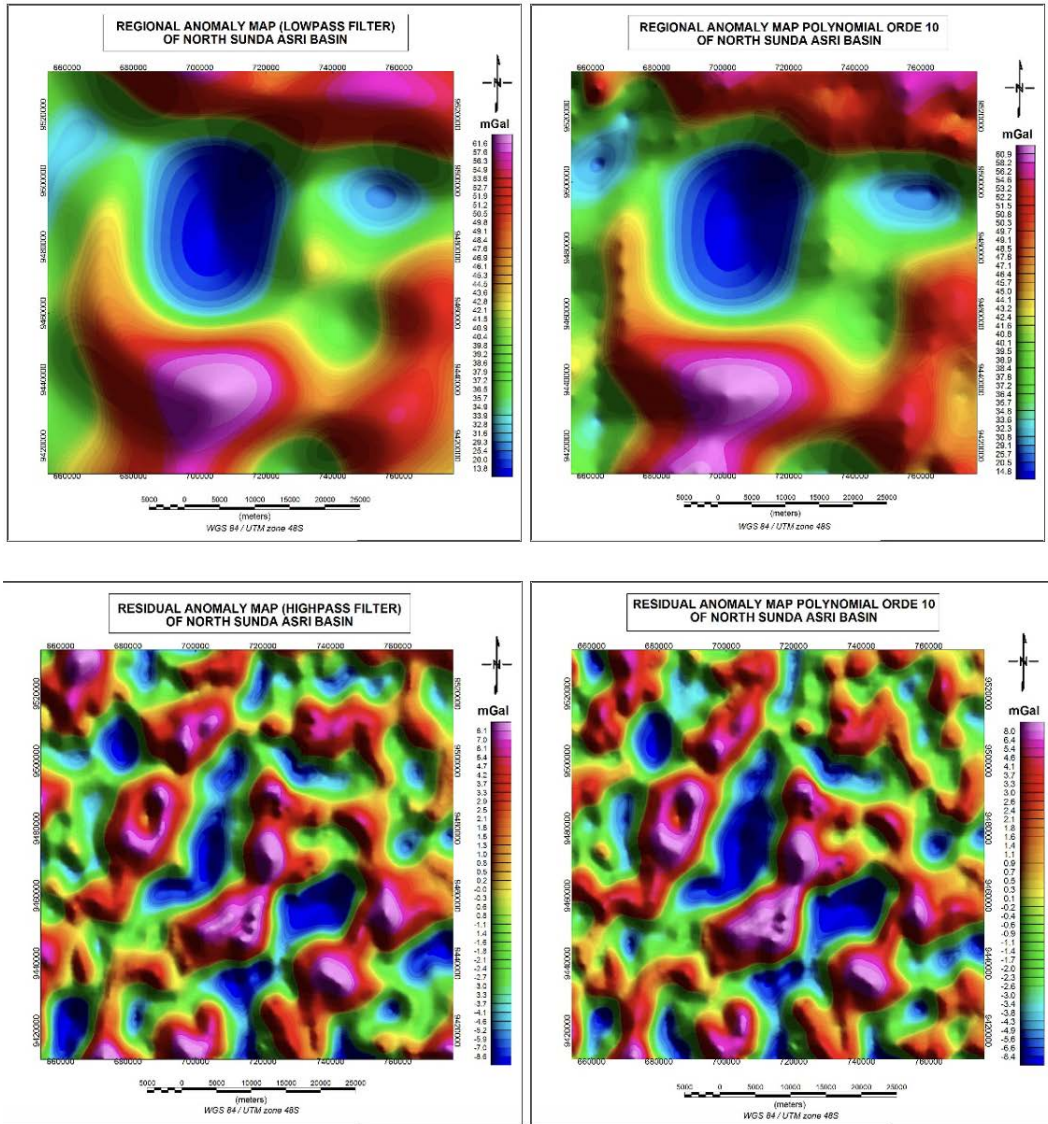


Figure 5. Regional and residual anomalies derived from polynomials of the 10th order

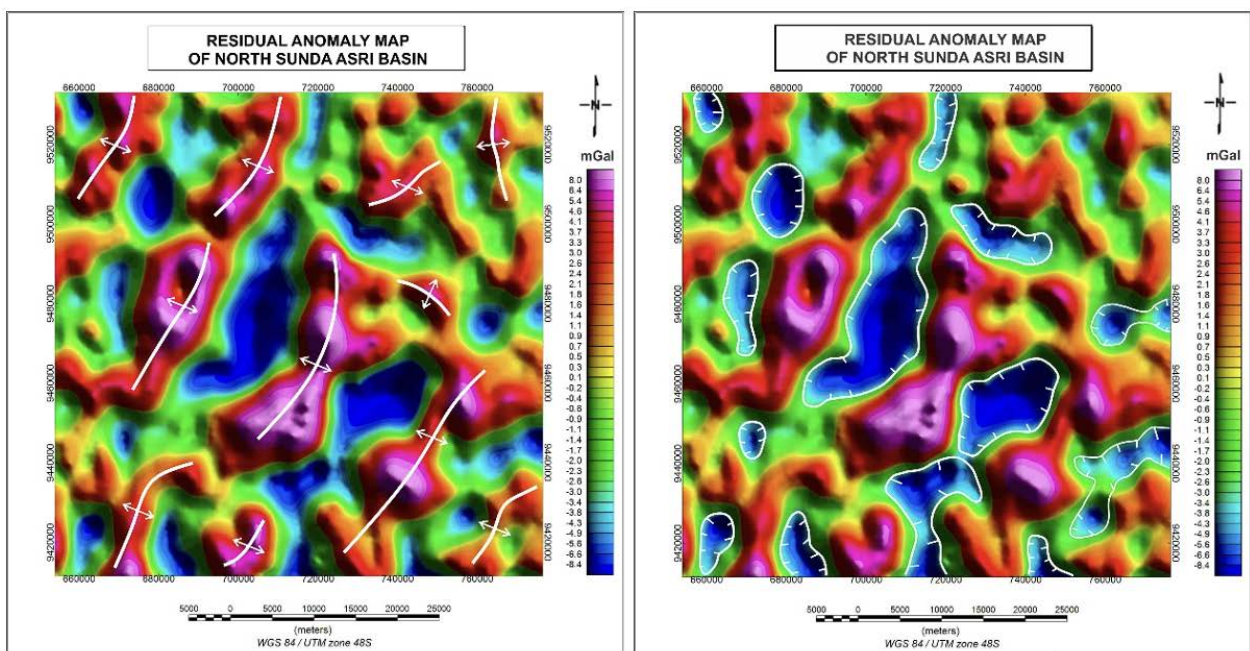


Figure 6. Lineament pattern and delineation of the Sunda Asri sub-basin

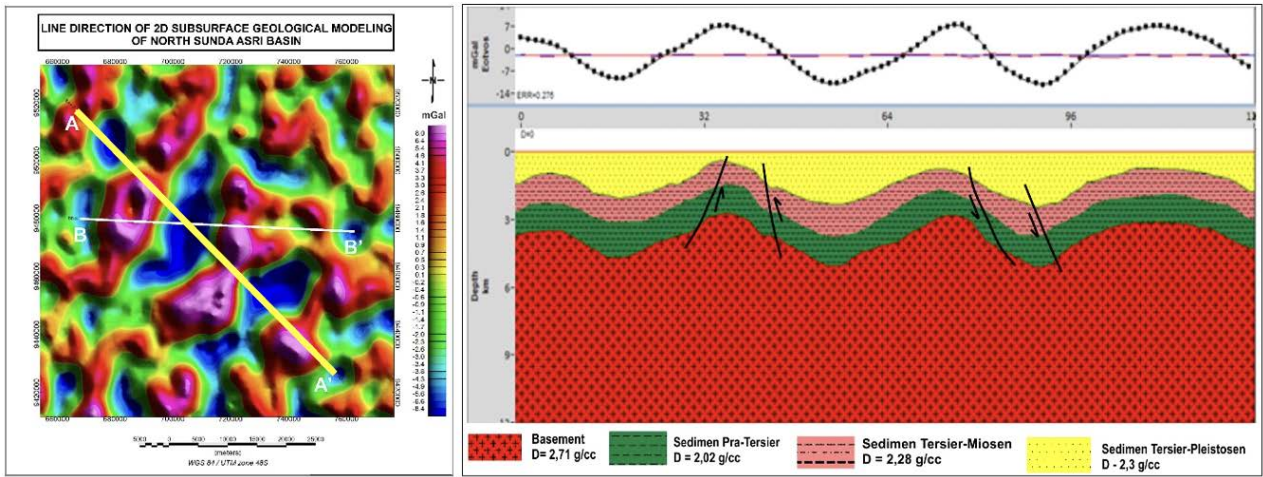


Figure 7. Line section and 2D Modeling of Line AA'

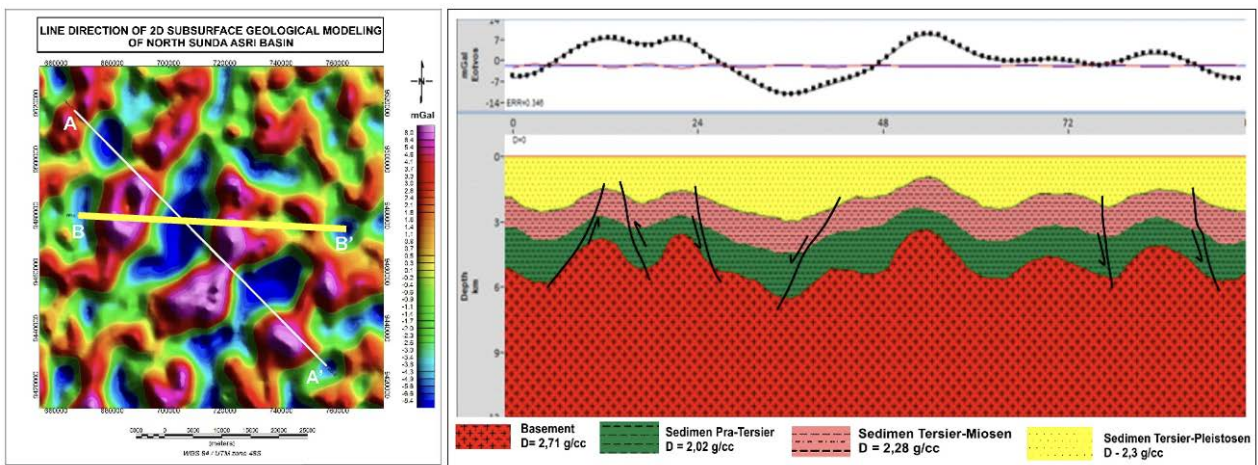


Figure 8. Line section and 2D Modeling of Line BB'

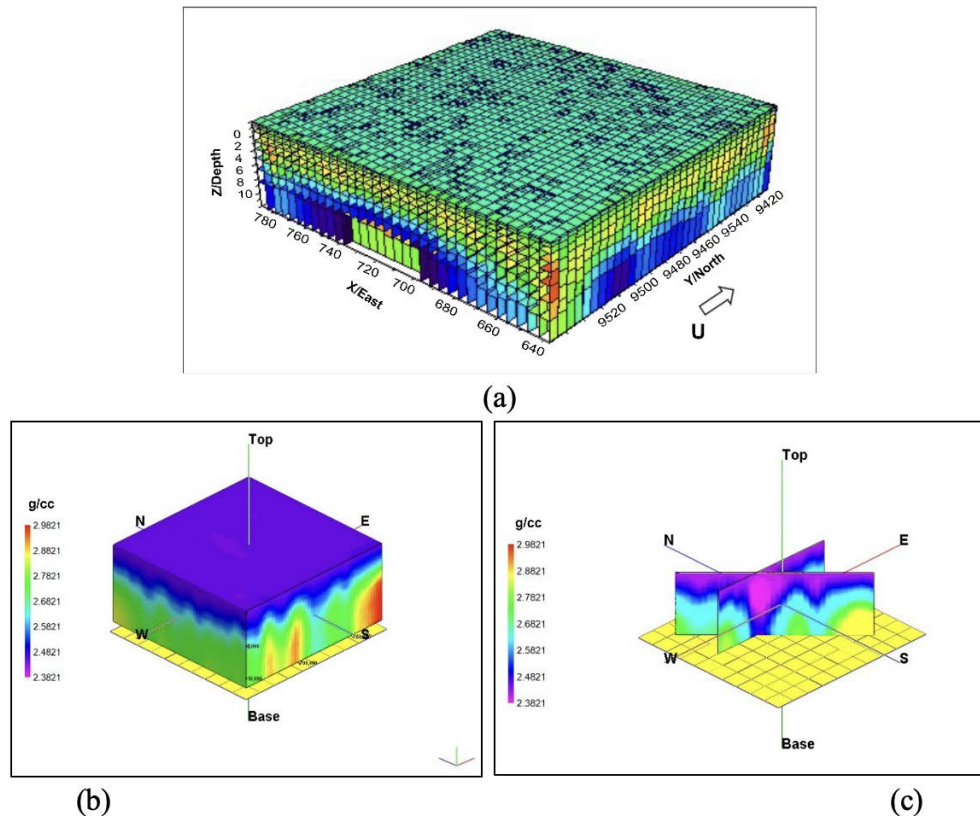


Figure 9. Rockwork 3D Modeling

analysis is based on the second derivative having a value of zero. Along the AA' path, two types of normal faults were identified, where the maximum SVD anomaly value is greater than the minimum anomaly. It can also be identified that there are two thrust faults where the minimum SVD anomaly value is greater than the maximum anomaly.

Along the BB' path, four types of normal faults were detected, with the maximum SVD anomaly value exceeds the minimum anomaly. Furthermore, two thrust faults where the minimum SVD anomaly value exceeding the maximum anomaly.

Figure 9a display the result of 3D inversion modeling using Grablox software, while Figures 9b and 9c show the results of 3D inversion using Rockwork software. The 3D inversion modeling results indicate that sediments shown in blue are at a depth of 0 – 5000 m with a density value of 2.3 g/cc – 2.5 g/cc. Meanwhile, the basement is shown in green to red at a depth of 5000 to 12000 m with a density value of 2.6 g/cc – 2.9 g/cc. Gravity modeling aimed to identify structures in the study area and determine the depocenter depth of sub-basins in the Sunda Asri Basin. Where there are several interesting basin with a thickness of up to 6000 m.

The existence of basement height structures and several sedimentary sub-basin shows quite interesting data for the development of the existing petroleum system in the Sunda Asri Basin. Petroleum system information indicates that the study area is a hydrocarbon producing sedimentary basin, which is in the Talang Akar Formation with the main reservoir consisting of sandstones. The gravity study results in the Sunda Asri Basin provide additional geoscientific information, particularly regarding structural patterns, sedimentary sub-basins and subsurface geological models, which are expected to become additional data for the next stage of oil and gas exploration in the Sunda Asri basin.

CONCLUSIONS

The results of the spectral analysis show that the average depth of the bedrock of the Sunda Asri basin is 2.75 km. Based on the optimal polynomial filter, the delineation of sub-basins reveals the presence of 14 sedimentary sub-basins in the Sunda Asri basin. The structural pattern, as determined using qualitative analysis, demonstrates a relatively southwest-northeast and north-south direction. The first layer was modeled with an average density of 2.37 g/cc, comprising claystone, sandstone, shale, and limestone. The second layer, with an average density of 2.28 g/cc, consists of limestone, claystone, shale, silt, and sandstone. The third layer, with a density value of 2.02 g/cc, includes claystone, sandstone, and a small amount of coal. Lastly, the basement, located at the bottom, is composed of metamorphic rock with an average density value of 2.71 g/cc. The analysis of the selected paths using the Second

Vertical Derivative (SVD) technique reveals the presence of normal fault structures and several thrust faults. The existence of basement high structures and several sedimentary sub-basin indicates an attractive structure for the development of the existing petroleum system in the Sunda Asri basin.

ACKNOWLEDGEMENTS

The author would like to thank the Head of the Marine Geological Survey and Mapping Center (BBSPGL) for giving permission to use the data processing facility. The author also thanks the Head of the Geological Survey Center for the use of gravity data, the editors and reviewers, as well as all parties who assisted in data processing and contributed to the writing of this scientific work.

REFERENCES

- Blakely, R.J., 1996. *Potential Theory in Gravity and Magnetic Applications*. Cambridge University Press.
- Daly, M.C., Cooper, M.A., Wilson, I., Smith, D.G., and Hooper, B. G. D., 1991. Cenozoic Plate Tectonics and Basin Evolution in Indonesia. *Marine and Petroleum Geology*, 8(1):2-21. [https://doi.org/10.1016/0264-8172\(91\)90041-X](https://doi.org/10.1016/0264-8172(91)90041-X).
- Koesoemadinata, R.P., 2004. *Regional Setting of The Sunda and Asri Basins*. CNOOC SES Ltd. Internal Study. Jakarta.
- Pirttijarvi, M., 2008. *Gravity Interpretation and Modeling Software Based on 3-D Block Models*. User's guide to version 1.6b. Department of Physics Sciences. University of Oulu. Finlandia.
- Setiadi, I., Setyanta, B., and Widijono, B.S., 2018. Delineasi Cekungan Sedimen Sumatra Selatan Berdasarkan Analisis Data Gaya Berat. *Jurnal Geologi dan Sumberdaya Mineral*, 20(2):93-106.
- Sukanto, J., Nunuk, F., Aldrich, J.B., Rinehart, G.P., and Mitchell, J., 1998. Petroleum System of the Asri Basin, Java Sea, Indonesia. *26th Convention and Exhibition Proceedings*. Indonesian Petroleum Association, 1998.
- Todd, D.F., and Pulunggono, A., 1971. The Sunda Basinal Area, An Important New Oil Province. American Association of Petroleum Geologists Conference. Houston.
- Wight, A., Sudarmono, and Imron, A., 1986. Stratigraphic Response to structural Evolution in a Tensional, Back Arc Setting and Its Exploratory Significance: Sunda Basin, West Java Sea. *15th Annual Convention Proceedings*. Indonesian Petroleum Association, 1: 77-100.
- Yan, M., Zhang, Y., Bocobo, G.A., Su, Q., Zhu, K., Zhang, Q., and Tan, J., 2020. A novel tissue separation method for determining upper trunk

center of gravity in patients with thoracolumbar
kyphosis using MIMICS. *Clinical Biomechanics*,

71(2020), 101–106. [https://doi.org/10.1016/
j.clinbiomech.2019.11.002](https://doi.org/10.1016/j.clinbiomech.2019.11.002).