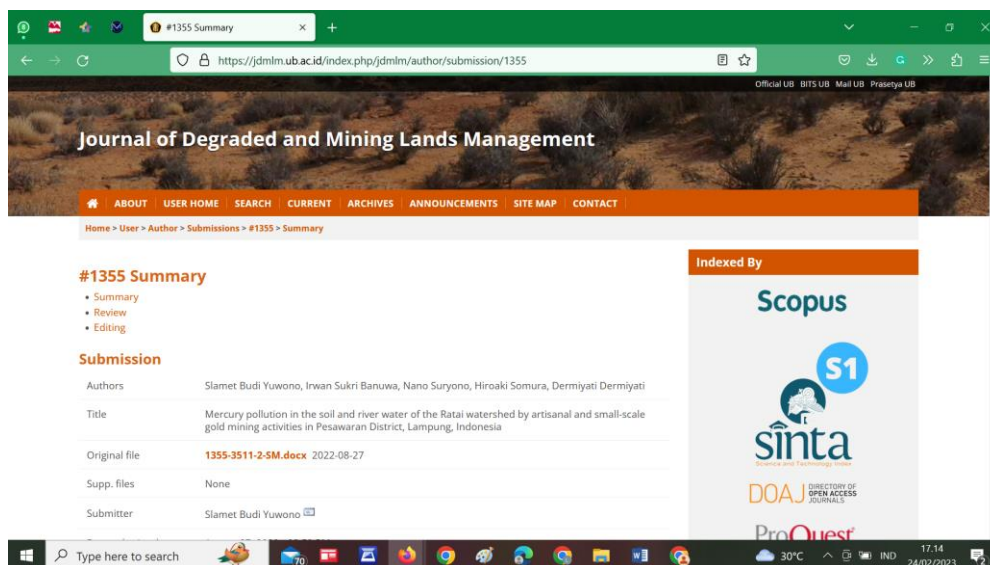


# BUKTI PERTANYAAN DAN JAWABAN ANTARA REVIEWER DENGAN PENULIS (KORESPONDENSI MELALUI WEBSITE *Journal of Degraded and Mining Lands Management*)

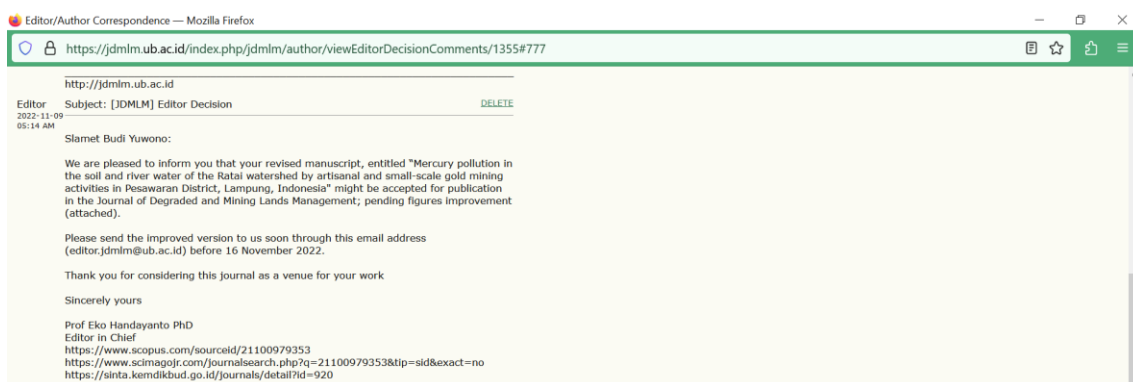
- **PROSES PENERBITAN NASKAH:** dimulai dari naskah diupload tanggal 27 Agustus 2022, proses review berlangsung dari tanggal 19 September 2022 sampai dengan 15 November 2022, diterima untuk publikasi tanggal 17 November 2022, dan diterbitkan pada tanggal 01 Januari 2023. Naskah diterbitkan pada Volume 10 Nomor 2 Tahun 2023 (Edisi January 2023).
- Judul: “Mercury pollution in the soil and river water of the Ratai watershed by artisanal and small-scale gold mining activities in Pesawaran District, Lampung, Indonesia“
- Penulis: **Slamet Budi Yuwono**, Irwan Sukri Banuwa, Nano Suryono, Hiroaki Somura, Dermiyati
- Tempat publikasi: *Journal of Degraded and Mining Lands Management*
- Bukti Naskah pertama kali diupload pada tanggal 27 Agustus 2022

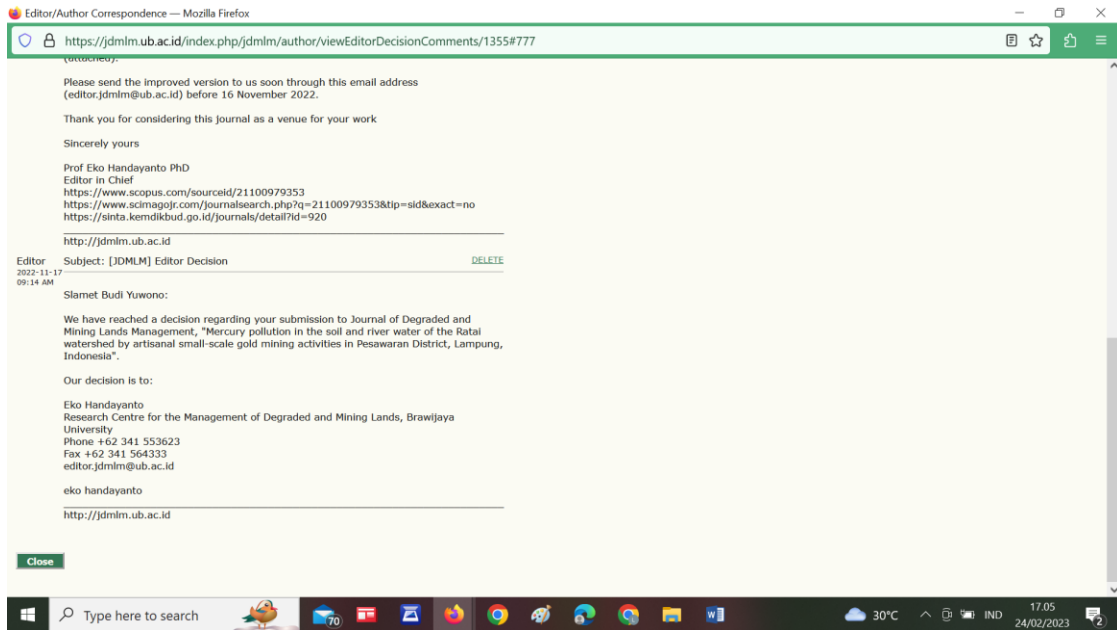


## PROSES REVIEW

- Link proses review dapat dilihat pada:  
<https://jdmlm.ub.ac.id/index.php/jdmlm/author/submissionReview/1355>
- Naskah direview oleh **2 orang reviewer (Blind Reviewers)**
- Bukti proses review oleh 2 orang reviewer terekam di website *Journal of Degraded and Mining Lands Management*
- Proses review dan perbaikan naskah dilaksanakan sebanyak 4 kali oleh 2 orang reviewer (Blind Review). Tanya Jawab melalui online di website *Journal of Degraded and Mining Lands Management*). **Perbaikan naskah** langsung di **file WORD** menggunakan *Track Changes*.

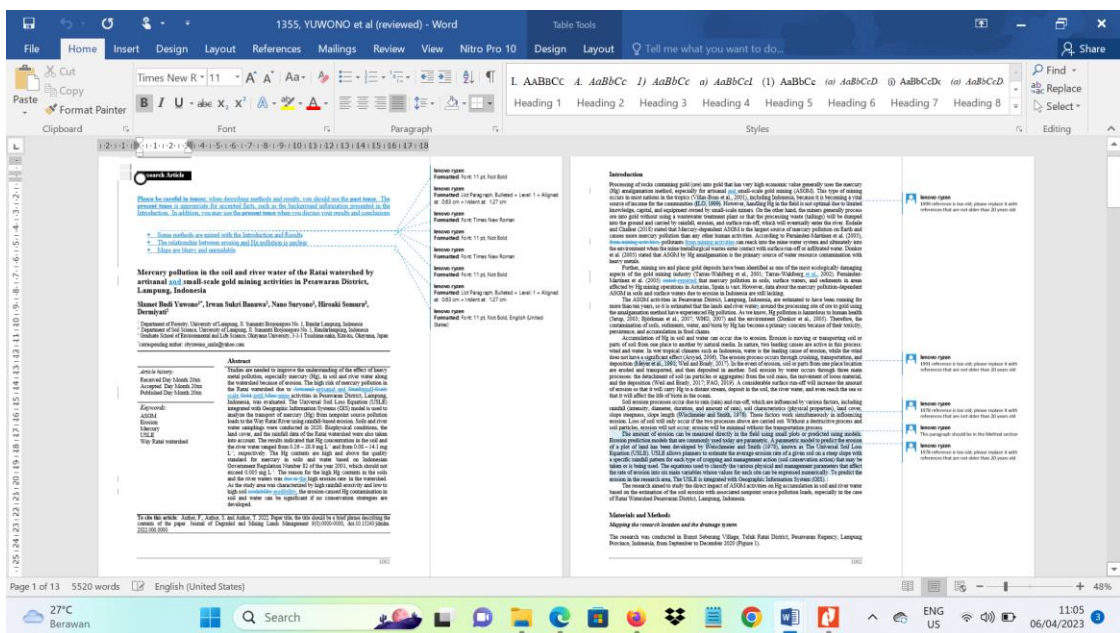
**BERIKUT BUKTI EDITOR/AUTHOR CORRESPONDENCE** melalui website *Journal of Degraded and Mining Lands Management*





## BERIKUT INI SCREEN SHOT KOMENTAR DAN SARAN PERBAIKAN NASKAH DARI REVIEWER DAN PERBAIKAN NASKAH YANG DILAKUKAN OLEH PENULIS.

1. Hasil review (komentar) dari **Reviewer Pertama** pada tanggal **19 September 2022** melalui *Track Changes* di file WORD sebagai berikut:





1355, YUWONO et al (reviewed) - Word

Table Tools

File Home Insert Design Layout References Mailings Review View Nitro Pro 10 Design Layout Tell me what you want to do...

Times New Roman 11

I. AABBCc 4. AaBbCc 1) AaBbCc a) AaBbCc1 (1) AaBbCc (a) AaBbCcD @ AaBbCcDx (a) AaBbCcD

Heading 1 Heading 2 Heading 3 Heading 4 Heading 5 Heading 6 Heading 7 Heading 8

Find & Replace Select

Clipboard Font Paragraph Styles Editing

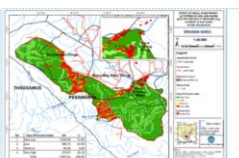


Figure 1. Division sites of the location.

Month	Sampled area	Area (km <sup>2</sup> )
Jan	1	14.9
Feb	2	11.2
Mar	3	13.1
Apr	4	13.9
May	5	14.7
Jun	6	15.5
Jul	7	16.3
Aug	8	17.1
Sep	9	17.9
Oct	10	18.7
Nov	11	19.5
Dec	12	20.3
Total	12	211.1

Surface area (km<sup>2</sup>) (SD) = 17.59 (0.85)

Total area (km<sup>2</sup>) (SD) = 211.1 (10.9)

Surface area (km<sup>2</sup>) (SD) = 17.59 (0.85)

Total area (km<sup>2</sup>) (SD) = 211.1 (10.9)

Page 9 of 13 5520 words English (United States)

27°C Berawan

Search

ENG US

11:07

06/04/2023

1355, YUWONO et al (reviewed) - Word

Table Tools

File Home Insert Design Layout References Mailings Review View Nitro Pro 10 Design Layout Tell me what you want to do...

Times New Roman 11

L. AABBCc 4. AaBbCc 1) AaBbCc a) AaBbCc1 (1) AaBbCc (a) AaBbCcD @ AaBbCcDx (a) AaBbCcD

Heading 1 Heading 2 Heading 3 Heading 4 Heading 5 Heading 6 Heading 7 Heading 8

Find & Replace Select

Clipboard Font Paragraph Styles Editing




Figure 1. The map and location sample point location.

Location Number	Area (km <sup>2</sup> )	Area (km <sup>2</sup> )	Area (km <sup>2</sup> )
1	14.9	14.9	14.9
2	11.2	11.2	11.2
3	13.1	13.1	13.1
4	13.9	13.9	13.9
5	14.7	14.7	14.7
6	15.5	15.5	15.5
7	16.3	16.3	16.3
8	17.1	17.1	17.1
9	17.9	17.9	17.9
10	18.7	18.7	18.7
11	19.5	19.5	19.5
12	20.3	20.3	20.3

Table 4. Correlation between distance to the nearest plantation and the number of trees in the field and water.

Distance to nearest plantation (km)	Number of trees in the field	Number of trees in water
0.5	10.5	10.5
1.0	11.0	11.0
1.5	11.5	11.5
2.0	12.0	12.0
2.5	12.5	12.5
3.0	13.0	13.0
3.5	13.5	13.5
4.0	14.0	14.0
4.5	14.5	14.5
5.0	15.0	15.0
5.5	15.5	15.5
6.0	16.0	16.0
6.5	16.5	16.5
7.0	17.0	17.0
7.5	17.5	17.5
8.0	18.0	18.0
8.5	18.5	18.5
9.0	19.0	19.0
9.5	19.5	19.5
10.0	20.0	20.0
10.5	20.5	20.5
11.0	21.0	21.0
11.5	21.5	21.5
12.0	22.0	22.0
12.5	22.5	22.5
13.0	23.0	23.0
13.5	23.5	23.5
14.0	24.0	24.0
14.5	24.5	24.5
15.0	25.0	25.0
15.5	25.5	25.5
16.0	26.0	26.0
16.5	26.5	26.5
17.0	27.0	27.0
17.5	27.5	27.5
18.0	28.0	28.0
18.5	28.5	28.5
19.0	29.0	29.0
19.5	29.5	29.5
20.0	30.0	30.0
20.5	30.5	30.5
21.0	31.0	31.0
21.5	31.5	31.5
22.0	32.0	32.0
22.5	32.5	32.5
23.0	33.0	33.0
23.5	33.5	33.5
24.0	34.0	34.0
24.5	34.5	34.5
25.0	35.0	35.0
25.5	35.5	35.5
26.0	36.0	36.0
26.5	36.5	36.5
27.0	37.0	37.0
27.5	37.5	37.5
28.0	38.0	38.0
28.5	38.5	38.5
29.0	39.0	39.0
29.5	39.5	39.5
30.0	40.0	40.0
30.5	40.5	40.5
31.0	41.0	41.0
31.5	41.5	41.5
32.0	42.0	42.0
32.5	42.5	42.5
33.0	43.0	43.0
33.5	43.5	43.5
34.0	44.0	44.0
34.5	44.5	44.5
35.0	45.0	45.0
35.5	45.5	45.5
36.0	46.0	46.0
36.5	46.5	46.5
37.0	47.0	47.0
37.5	47.5	47.5
38.0	48.0	48.0
38.5	48.5	48.5
39.0	49.0	49.0
39.5	49.5	49.5
40.0	50.0	50.0
40.5	50.5	50.5
41.0	51.0	51.0
41.5	51.5	51.5
42.0	52.0	52.0
42.5	52.5	52.5
43.0	53.0	53.0
43.5	53.5	53.5
44.0	54.0	54.0
44.5	54.5	54.5
45.0	55.0	55.0
45.5	55.5	55.5
46.0	56.0	56.0
46.5	56.5	56.5
47.0	57.0	57.0
47.5	57.5	57.5
48.0	58.0	58.0
48.5	58.5	58.5
49.0	59.0	59.0
49.5	59.5	59.5
50.0	60.0	60.0
50.5	60.5	60.5
51.0	61.0	61.0
51.5	61.5	61.5
52.0	62.0	62.0
52.5	62.5	62.5
53.0	63.0	63.0
53.5	63.5	63.5
54.0	64.0	64.0
54.5	64.5	64.5
55.0	65.0	65.0
55.5	65.5	65.5
56.0	66.0	66.0
56.5	66.5	66.5
57.0	67.0	67.0
57.5	67.5	67.5
58.0	68.0	68.0
58.5	68.5	68.5
59.0	69.0	69.0
59.5	69.5	69.5
60.0	70.0	70.0
60.5	70.5	70.5
61.0	71.0	71.0
61.5	71.5	71.5
62.0	72.0	72.0
62.5	72.5	72.5
63.0	73.0	73.0
63.5	73.5	73.5
64.0	74.0	74.0
64.5	74.5	74.5
65.0	75.0	75.0
65.5	75.5	75.5
66.0	76.0	76.0
66.5	76.5	76.5
67.0	77.0	77.0
67.5	77.5	77.5
68.0	78.0	78.0
68.5	78.5	78.5
69.0	79.0	79.0
69.5	79.5	79.5
70.0	80.0	80.0
70.5	80.5	80.5
71.0	81.0	81.0
71.5	81.5	81.5
72.0	82.0	82.0
72.5	82.5	82.5
73.0	83.0	83.0
73.5	83.5	83.5
74.0	84.0	84.0
74.5	84.5	84.5
75.0	85.0	85.0
75.5	85.5	85.5
76.0	86.0	86.0
76.5	86.5	86.5
77.0	87.0	87.0
77.5	87.5	87.5
78.0	88.0	88.0
78.5	88.5	88.5
79.0	89.0	89.0
79.5	89.5	89.5
80.0	90.0	90.0
80.5	90.5	90.5
81.0	91.0	91.0
81.5	91.5	91.5
82.0	92.0	92.0
82.5	92.5	92.5
83.0	93.0	93.0
83.5	93.5	93.5
84.0	94.0	94.0
84.5	94.5	94.5
85.0	95.0	95.0
85.5	95.5	95.5
86.0	96.0	96.0
86.5	96.5	96.5
87.0	97.0	97.0
87.5	97.5	97.5
88.0	98.0	98.0
88.5	98.5	98.5
89.0	99.0	99.0
89.5	99.5	99.5
90.0	100.0	100.0
90.5	100.5	100.5
91.0	101.0	101.0
91.5	101.5	101.5
92.0	102.0	102.0
92.5	102.5	102.5
93.0	103.0	103.0
93.5	103.5	103.5
94.0	104.0	104.0
94.5	104.5	104.5
95.0	105.0	105.0
95.5	105.5	105.5
96.0	106.0	106.0
96.5	106.5	106.5
97.0	107.0	107.0
97.5	107.5	107.5
98.0	108.0	108.0
98.5	108.5	108.5
99.0	109.0	109.0
99.5	109.5	109.5
100.0	110.0	110.0
100.5	110.5	110.5
101.0	111.0	111.0
101.5	111.5	111.5
102.0	112.0	112.0
102.5	112.5	112.5
103.0	113.0	113.0
103.5	113.5	113.5
104.0	114.0	114.0
104.5	114.5	114.5
105.0	115.0	115.0
105.5	115.5	115.5
106.0	116.0	116.0
106.5	116.5	116.5
107.0	117.0	117.0
107.5	117.5	117.5
108.0	118.0	118.0
108.5	118.5	118.5
109.0	119.0	119.0
109.5	119.5	119.5
110.0	120.0	120.0
110.5	120.5	120.5
111.0	121.0	121.0
111.5	121.5	121.5
112.0	122.0	122.0
112.5	122.5	122.5
113.0	123.0	123.0
113.5	123.5	123.5
114.0	124.0	124.0
114.5	124.5	124.5
115.0	125.0	125.0
115.5	125.5	125.5
116.0	126.0	126.0
116.5	126.5	126.5
117.0	127.0	127.0
117.5	127.5	127.5
118.0	128.0	128.0
118.5	128.5	128.5
119.0	129.0	129.0
119.5	129.5	129.5
120.0	130.0	130.0
120.5	130.5	130.5
121.0	131.0	131.0
121.5	131.5	131.5
122.0	132.0	132.0
122.5	132.5	132.5
123.0	133.0	133.0
123.5	133.5	133.5
124.0	134.0	134.0
124.5	134.5	134.5
125.0	135.0	135.0
125.5	135.5	135.5
126.0	136.0	136.0
126.5	136.5	136.5
127.0	137.0	137.0
127.5	137.5	137.5
128.0	138.0	138.0
128.5	138.5	138.5
129.0	139.0	139.0
129.5	139.5	139.5
130.0	140.0	140.0
130.5	140.5	140.5
131.0	141.0	141.0
131.5	141.5	141.5
132.0	142.0	142.0
132.5	142.5	142.5
133.0	143.0	143.0
133.5	143.5	143.5
134.0	144.0	144.0
134.5	144.5	144.5
135.0	145.0	145.0
135.5	145.5	145.5
136.0	146.0	146.0
136.5	146.5	146.5
137.0	147.0	147.0
137.5	147.5	147.5
138.0	148.0	148.0
138.5	148.5	148.5
139.0	149.0	149.0
139.5	149.5	149.5
140.0	150.0	150.0
140.5	150.5	150.5
141.0	151.0	151.0
141.5	151.5	151.5
142.0	152.0	152.0
142.5	152.5	152.5
143.0	153.0	153.0
143.5	153.5	153.5
144.0	154.0	154.0
144.5	154.5	154.5
145.0	155.0	155.0
145.5	155.5	155.5
146.0	156.0	156.0
146.5	156.5	156.5
147.0	157.0	157.0
147.5	157.5	157.5
148.0	158.0	158.0
148.5	158.5	158.5
149.0	159.0	159.0
149.5	159.5	159.5
150.0	160.0	160.0
150.5	160.5	160.5
151.0	161.0	161.0
151.5	161.5	161.5
152.0	162.0	162.0
152.5	162.5	162.5
153.0	163.0	163.0
153.5	163.5	163.5
154.0	164.0	164.0
154.5	164.5	164.5
155.0	165.0	165.0
155.5	165.5	165.5
156.0	166.0	166.0
156.5	166.5	166.5
157.0	167.0	167.0
157.5	167.5	167.5
158.0	168.0	168.0
158.5	168.5	168.5
159.0	169.0	169.0
159.5	169.5	169.5
160.0	170.0	170.0
160.5	170.5	170.5
161.0	171.0	171.0
161.5	171.5	171.5
162.0	172.0	172.0
162.5	172.5	172.5
163.0	173.0	173.0
163.5	173.5	173.5
164.0	174.0	174.0
164.5	174.5	174.5
165.0	175.0	175.0
165.5	175.5	175.5
166.0	176.	

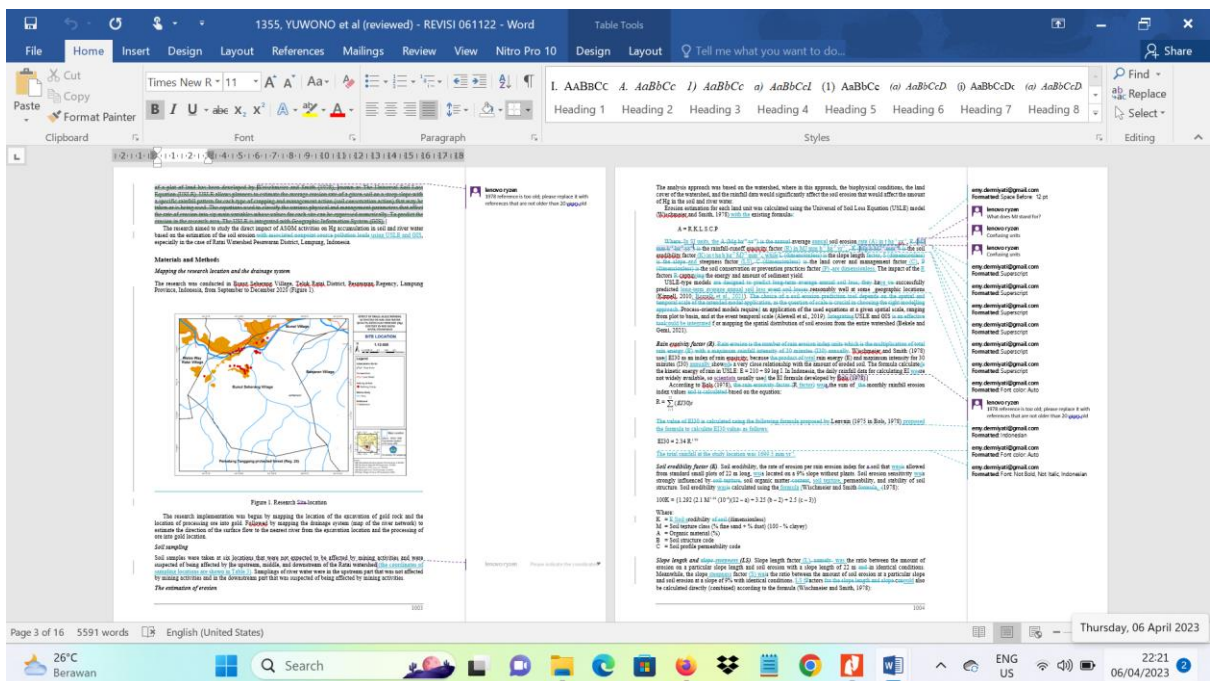
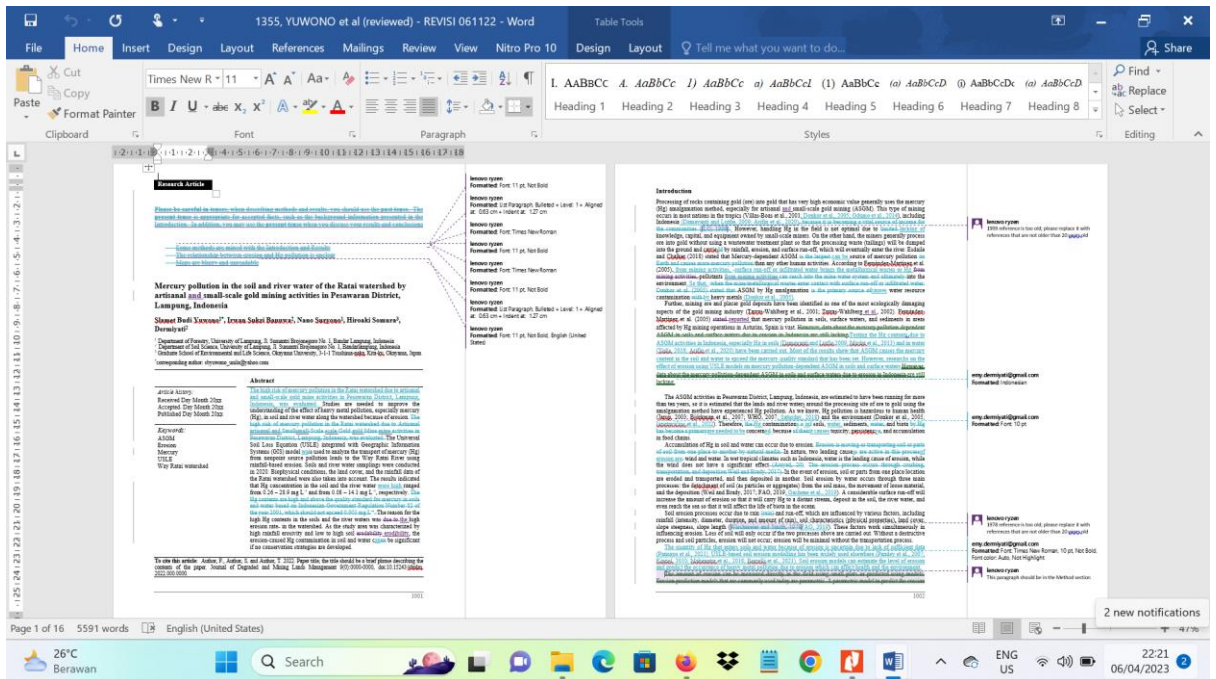








3. **PERBAIKAN NASKAH OLEH PENULIS** berdasarkan komentar dari **Reviewer Pertama** dan **Reviewer Kedua** dilakukan beberapa kali yaitu tanggal **22 Oktober 2022**, **8 November 2022**, dan **16 November 2022**. Tanya jawab antara **Reviewer** dan **Penulis** terkait perbaikan naskah langsung dilakukan melalui **Track Changes** di file **WORD**. Hasil Screen Shot **FINAL HASIL PERBAIKAN** sebagai berikut:





1355, YUWONO et al (reviewed) - REVISI 061122 - Word

File Home Insert Design Layout References Mailings Review View Nitro Pro 10 Design Layout Tell me what you want to do...

Times New Roman 11

Heading 1 Heading 2 Heading 3 Heading 4 Heading 5 Heading 6 Heading 7 Heading 8

Class of Erosion Index

Class	Percentage
Very Low	71,95%
Low	14,2%
Medium	12,39%
Very High	10,16%

Page 11 of 16 5591 words English (United States)

26°C Berawan

1355, YUWONO et al (reviewed) - REVISI 061122 - Word

File Home Insert Design Layout References Mailings Review View Nitro Pro 10 Design Layout Tell me what you want to do...

Times New Roman 11

Heading 1 Heading 2 Heading 3 Heading 4 Heading 5 Heading 6 Heading 7 Heading 8

Watershed Location

Page 13 of 16 5591 words English (United States)

26°C Berawan

1355, YUWONO et al (reviewed) - REVISI 061122 - Word

File Home Insert Design Layout References Mailings Review View Nitro Pro 10 Design Layout Tell me what you want to do...

Times New Roman 11

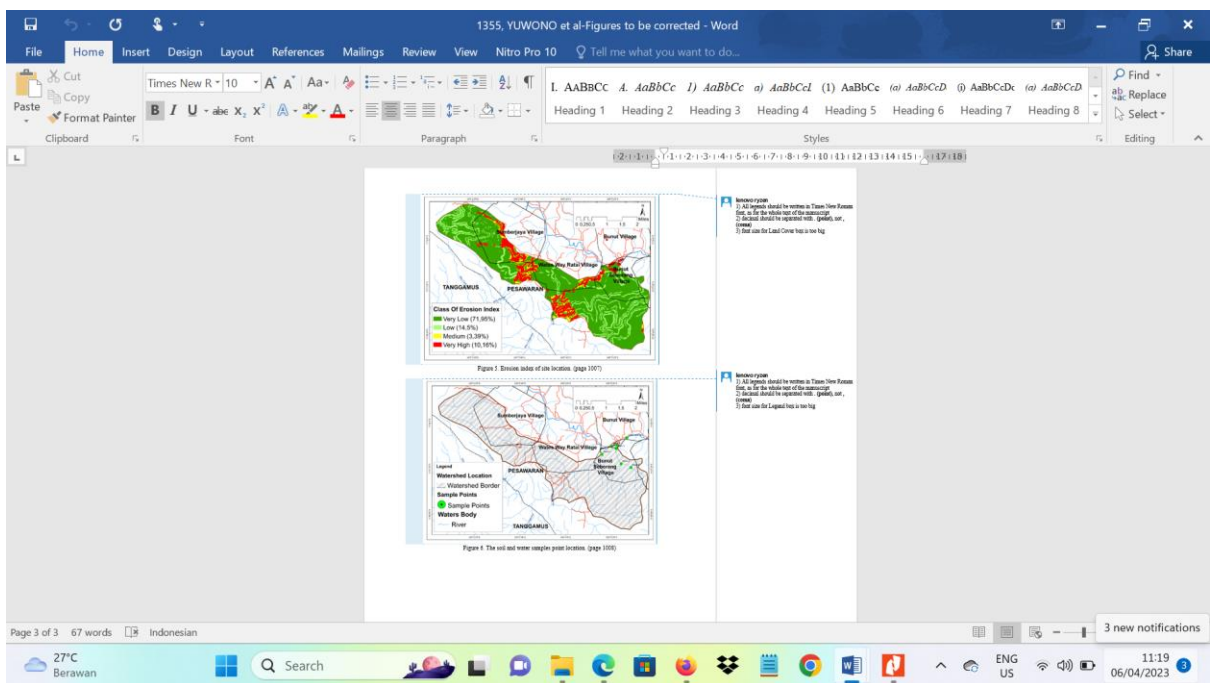
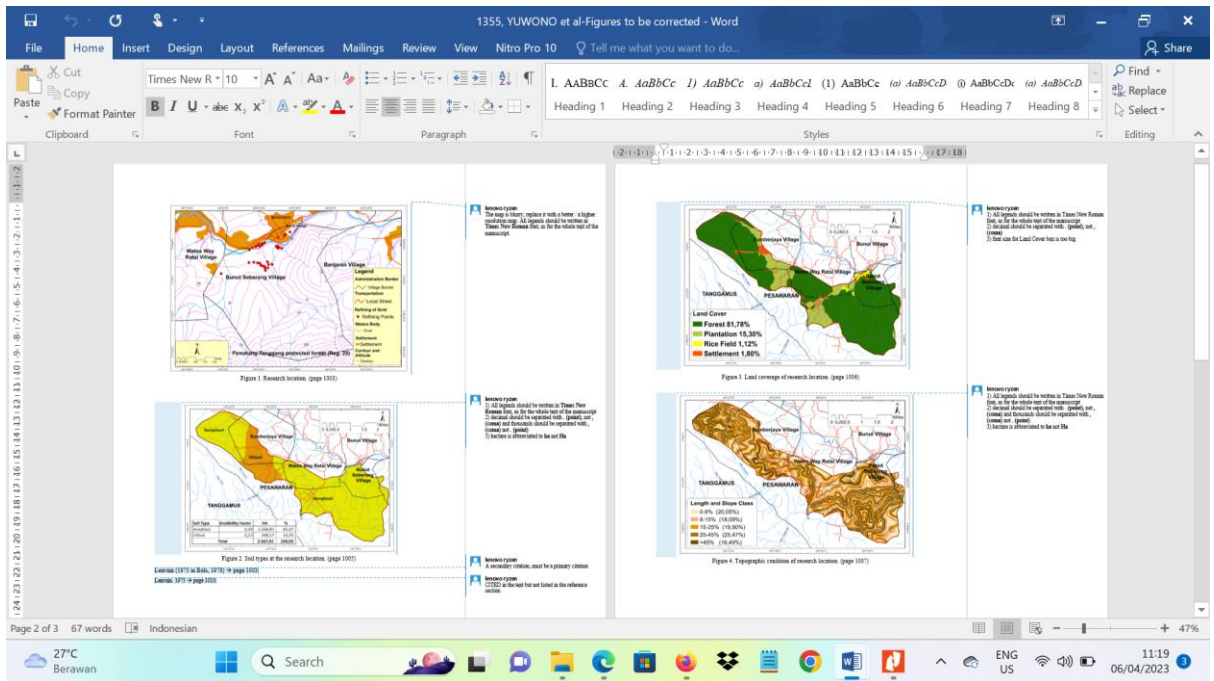
Heading 1 Heading 2 Heading 3 Heading 4 Heading 5 Heading 6 Heading 7 Heading 8

Page 15 of 16 5591 words English (United States)

Thursday, 06 April 2023

26°C Berawan

4. Berikut ini screen shot hasil Komentar Reviewer Pertama dan Kedua pada tanggal 9 November dan 15 November 2022 terkait hasil perbaikan naskah oleh Penulis dan Permintaan dari Reviewer untuk memperbaiki Gambar-gambar yang ada di dalam naskah untuk meningkatkan kualitas gambar.



5. Berikut Jawaban Penulis terkait Hasil Perbaikan Gambar:

**HASIL REVISI GAMBAR YANG SUDAH DIBUAT ULANG  
SESUAI SARAN REVIEWER**

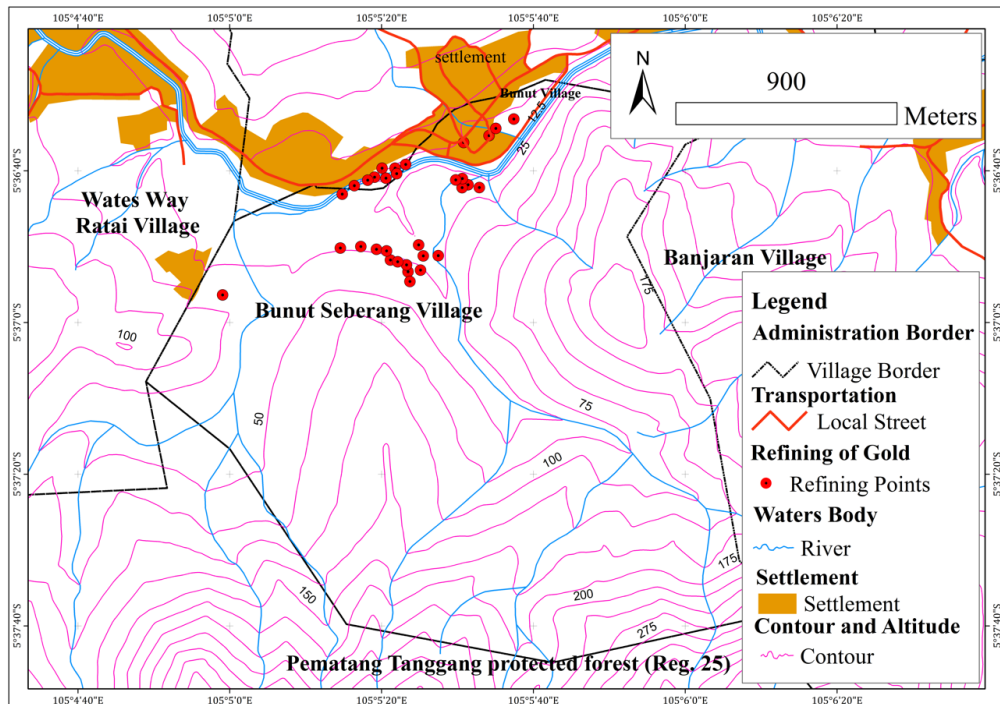


Figure 1. Site and Research Location

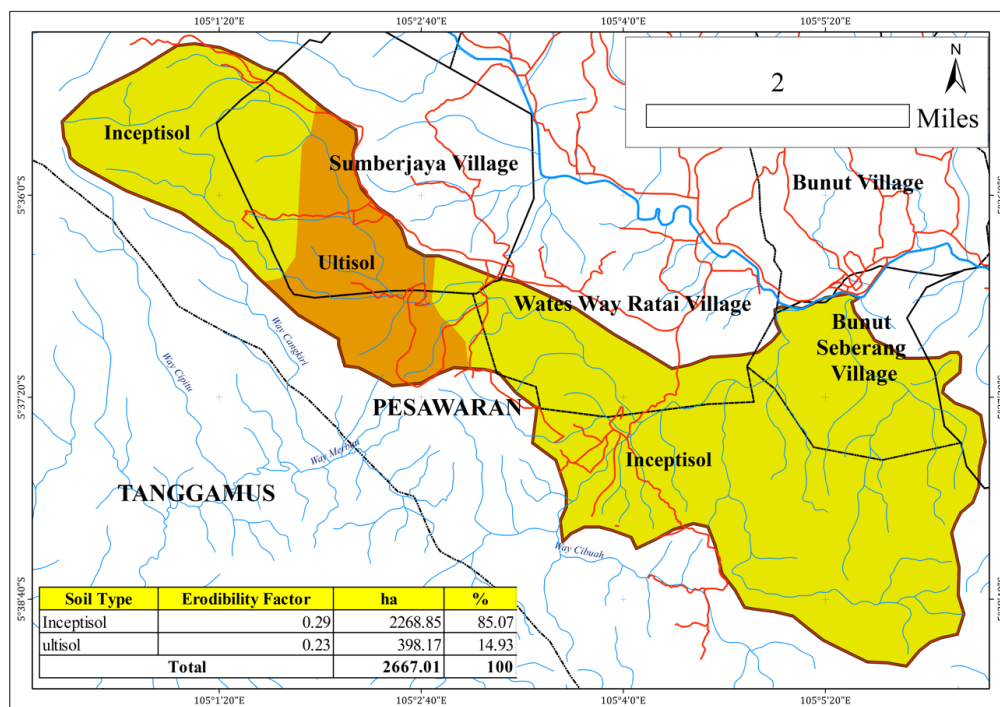


Figure 2. Soil Type at Research Location

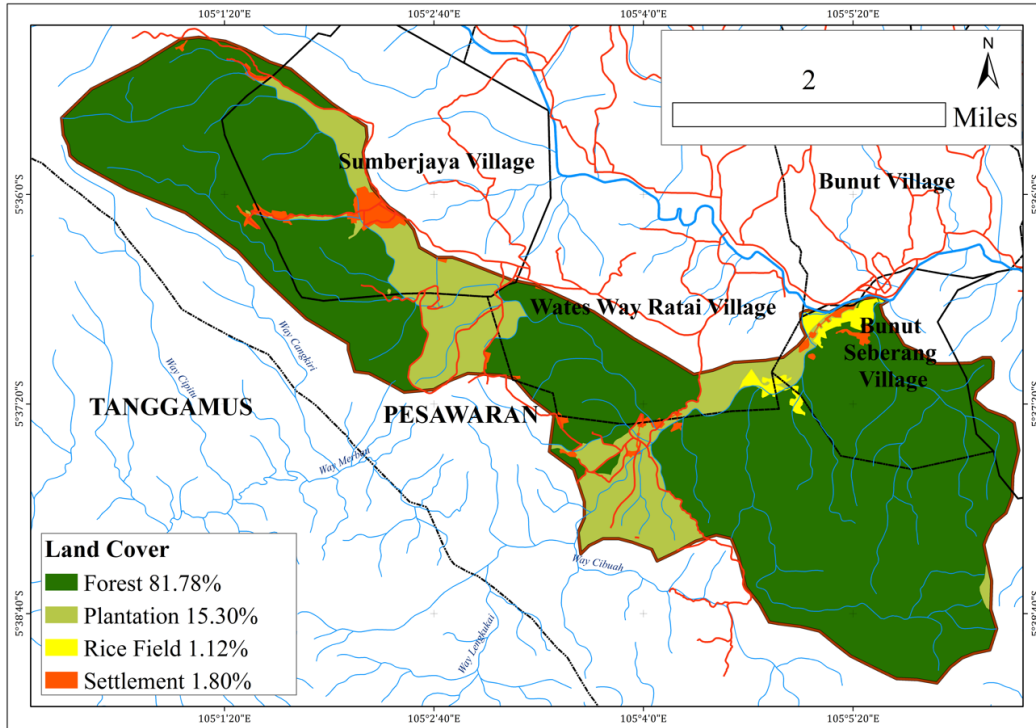


Figure 3. Land coverage of research location

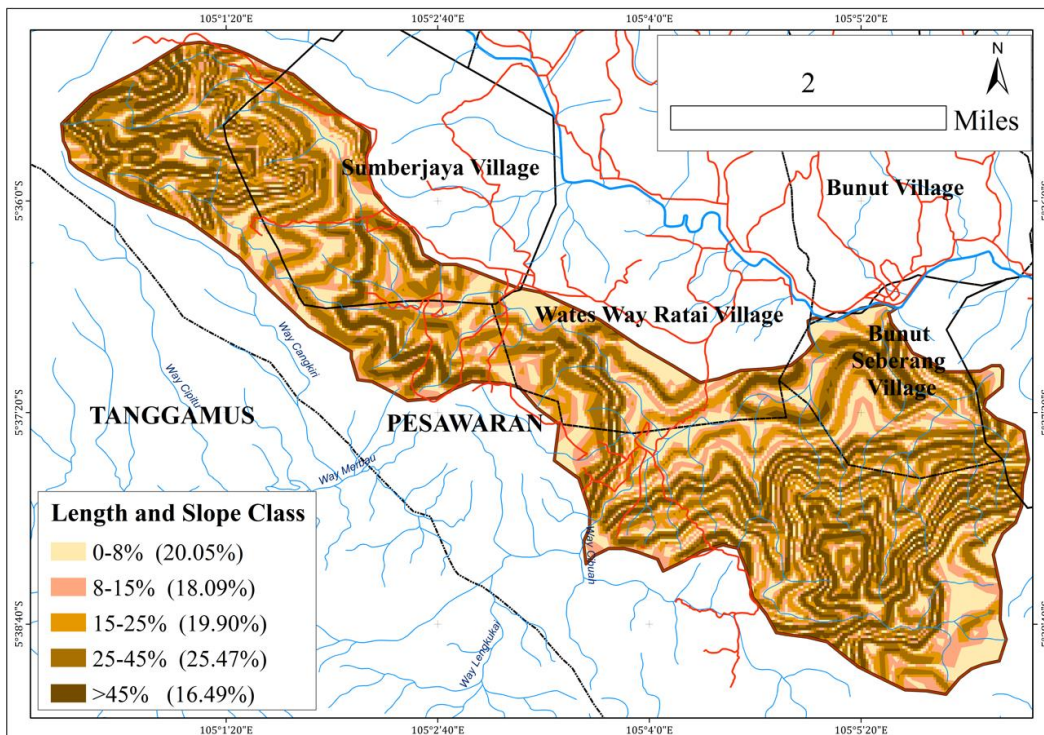


Figure 4. Topographic condition of research location.

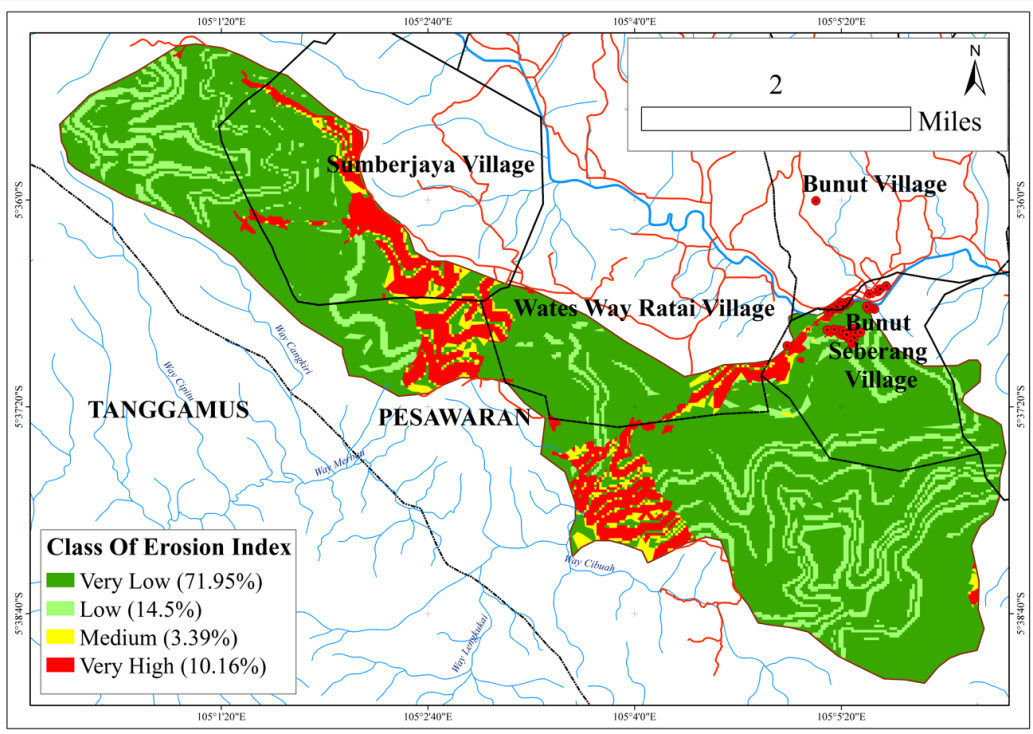


Figure 5. Erosion index of site location

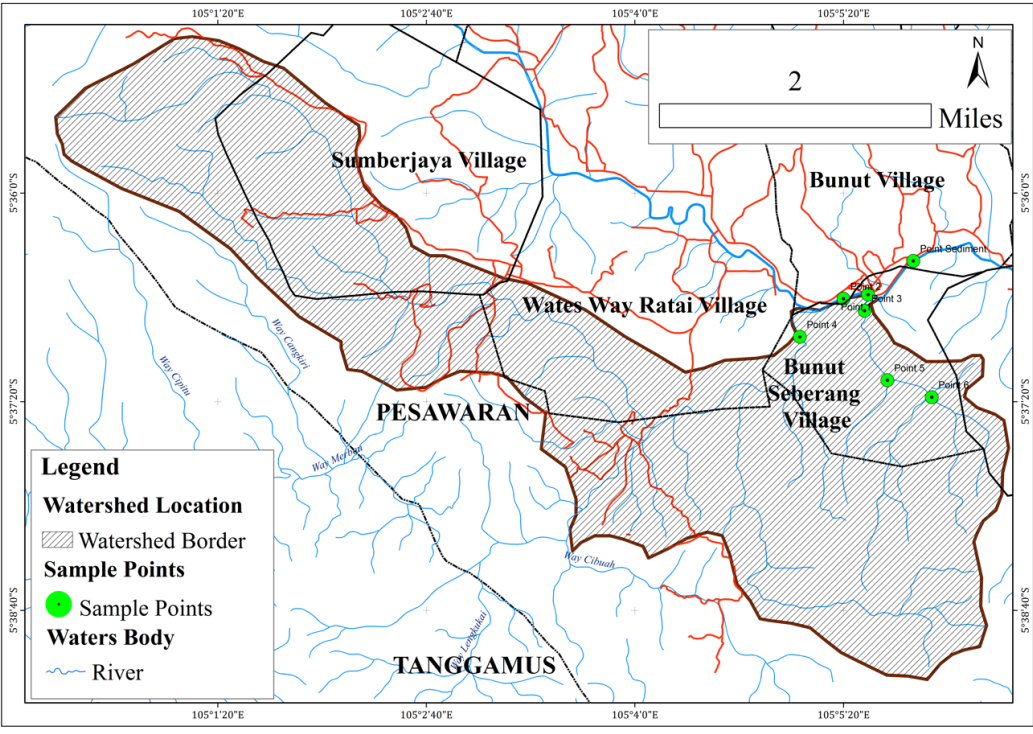
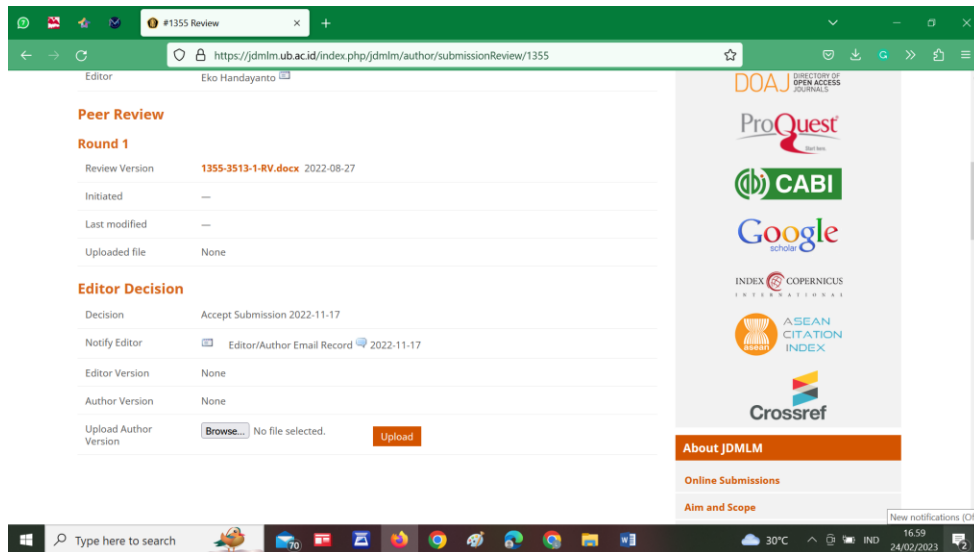


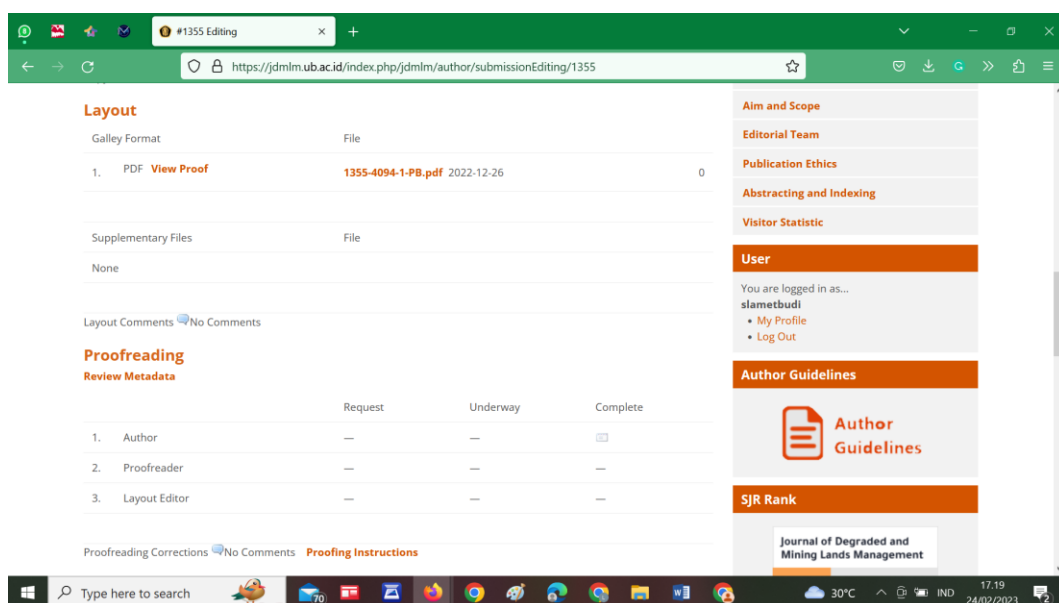
Figure 6. The soil and water samples point location

- Setelah semua perbaikan naskah dan gambar sudah sesuai dengan permintaan 2 orang Reviewers tersebut, maka Dewan Editor menyatakan **Naskah diterima** untuk dipublikasikan pada tanggal **17 November 2022**.
- **Bukti di website bahwa Naskah diterima pada tanggal 17 November 2022**



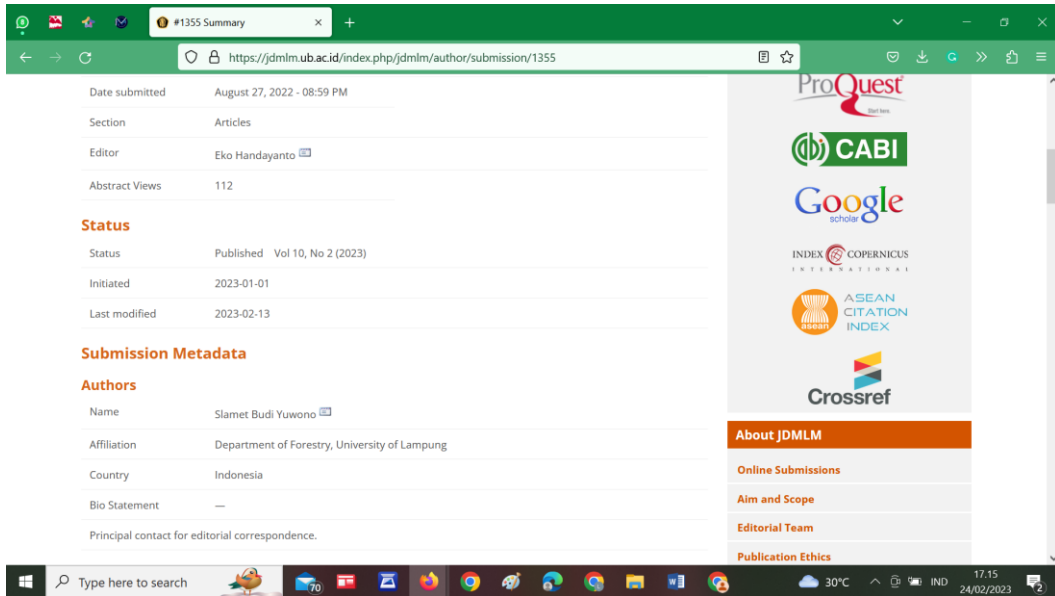
Setelah proses review selesai masih dilakukan proses perbaikan Layout naskah oleh Editor sebelum naskah diterbitkan.

- Berikut ini Bukti pengiriman naskah Proof reading oleh Editor pada tanggal **26 Desember 2022** agar dilakukan pengecekan oleh Penulis sebelum naskah diupload untuk diterbitkan secara online di website *Journal of Degraded and Mining Lands Management*.

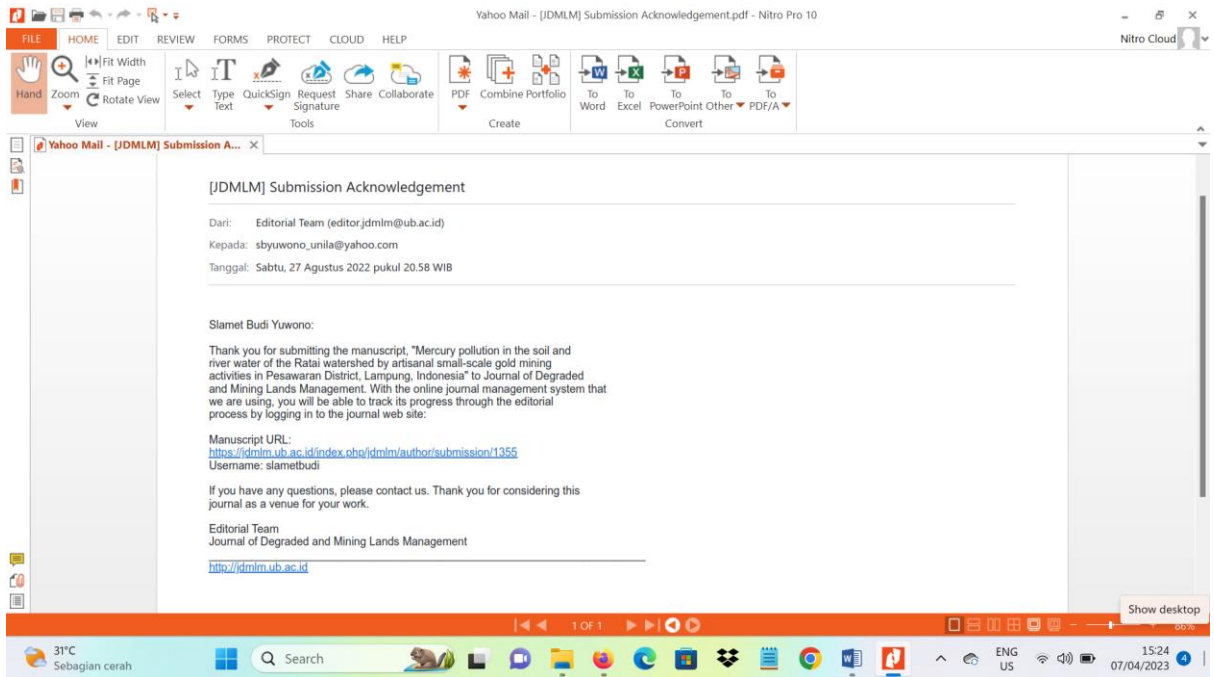




- Berikut ini Bukti Pemberitahuan dari Editor bahwa naskah akan diterbitkan di *Journal of Degraded and Mining Lands Management* pada Vol. 10 No. 2 Edisi January 2023.



- Berikut ini hasil Bukti email antara Dewan Editor dan Penulis selama Proses Publikasi di *Journal of Degraded and Mining Land Managements*.



Yahoo Mail - [JDMLM] Editor Decision.pdf - Nitro Pro 10

FILE HOME EDIT REVIEW FORMS PROTECT CLOUD HELP

Hand Zoom Fit Width Fit Page Rotate View Select Type Text QuickSign Request Signature Share Collaborate PDF Combine Portfolio To Word To Excel To PowerPoint Other To PDF/A

View Tools Create Convert

Yahoo Mail - [JDMLM] Submission A... Yahoo Mail - Re\_ [JDMLM] Comments... Yahoo Mail - [JDMLM] Editor Decis...

[JDMLM] Editor Decision

Dari: Editorial Team (editor.jdmim@ub.ac.id)  
 Kepada: sbyuwono\_unila@yahoo.com  
 Tanggal: Rabu, 9 November 2022 pukul 05.12 WIB

Slamet Budi Yuwono:

We are pleased to inform you that your revised manuscript, entitled "Mercury pollution in the soil and river water of the Ratai watershed by artisanal and small-scale gold mining activities in Pesawaran District, Lampung, Indonesia" might be accepted for publication in the Journal of Degraded and Mining Lands Management, pending figures improvement (attached).

Please send the improved version to us soon through this email address (editor.jdmim@ub.ac.id) before 16 November 2022.

Thank you for considering this journal as a venue for your work.

Sincerely yours

Prof Eko Handayanto PhD  
 Editor in Chief  
<http://www.scribd.com/document/2110079353>  
<https://www.scopus.com/authid/detail.url?authorid=2110079353&queryid=5&export=html>  
<https://anda.kemdikbud.go.id/journals/detail?id=920>  
<http://jdmim.ub.ac.id>

1355\_YUWONO et al-Figures to be corrected.docx  
 1.7MB

1355\_YUWONO et al-draft.pdf  
 1.9MB

31°C Sebagian cerah

15:28 07/04/2023

Yahoo Mail - Re\_ [JDMLM] Editor Decision.pdf - Nitro Pro 10

FILE HOME EDIT REVIEW FORMS PROTECT CLOUD HELP

Hand Zoom Fit Width Fit Page Rotate View Select Type Text QuickSign Request Signature Share Collaborate PDF Combine Portfolio To Word To Excel To PowerPoint Other To PDF/A

View Tools Create Convert

Yahoo Mail - [JDMLM] Submission A... Yahoo Mail - Re\_ [JDMLM] Comments... Yahoo Mail - [JDMLM] Editor Decis... Yahoo Mail - Re\_ [JDMLM] Editor D...

Re: [JDMLM] Editor Decision

Dari: Slamet Budi Yuwono (sbyuwono\_unila@yahoo.com)  
 Kepada: editor.jdmim@ub.ac.id  
 Tanggal: Selasa, 15 November 2022 pukul 08.36 WIB

Prof Eko Handayanto PhD  
 Editor in Chief JDMLM

We have improved figures and bibliography as your request (attached).

Thank you for your kind cooperation. Looking forward to hear from you soon.

Best regards,

Slamet Budi Yuwono

Pada Rabu, 9 November 2022 05.12.47 WIB, Editorial Team <editor.jdmim@ub.ac.id> menulis:

Slamet Budi Yuwono:

We are pleased to inform you that your revised manuscript, entitled "Mercury pollution in the soil and river water of the Ratai watershed by artisanal and small-scale gold mining activities in Pesawaran District, Lampung, Indonesia" might be accepted for publication in the Journal of Degraded and Mining Lands Management, pending figures improvement

31°C Sebagian cerah

15:29 07/04/2023

Yahoo Mail - [JDMLM] Acceptance Letter and Galley Proof\_ 1355-3511-2-SM.pdf - Nitro Pro 10

FILE HOME EDIT REVIEW FORMS PROTECT CLOUD HELP

Hand Zoom Fit Width Fit Page Rotate View Select Type Text QuickSign Request Signature Share Collaborate PDF Combine Portfolio To Word To Excel To PowerPoint Other To PDF/A

View Tools Create Convert

Yahoo Mail - [JDMLM] Submission A... Yahoo Mail - [JDMLM] Editor Decis... Yahoo Mail - Re\_ [JDMLM] Editor D... Yahoo Mail - [JDMLM] Acceptance L...

[JDMLM] Acceptance Letter and Galley Proof: 1355-3511-2-SM

Dari: JDMLM Editorial Office (editor.jdmim@ub.ac.id)  
 Kepada: sbyuwono\_unila@yahoo.com  
 Tanggal: Rabu, 16 November 2022 pukul 10.39 WIB

Dear Authors,

We are pleased to inform you that your revised manuscript entitled "Mercury pollution in the soil and river water of the Ratai watershed by artisanal and small-scale gold mining activities in Pesawaran District, Lampung, Indonesia" has been accepted for publication in the Journal of Degraded and Mining Lands Management.

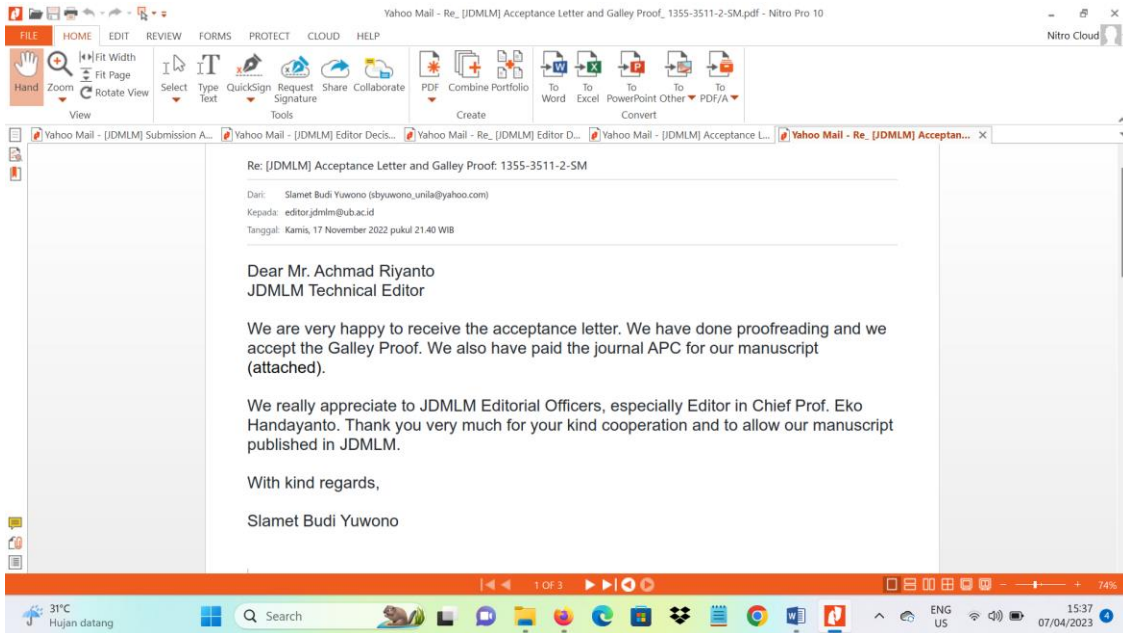
We are sending herewith the Acceptance Letter and the Galley Proof of your article for proofreading. The article will likely come in Vol. 10, No. 2 (1 January 2023). Please kindly go through it keenly and point out any mistakes. After this stage, the authors will be responsible for any errors in the final manuscript. Kindly send the corrections (if any) back to us through this email address [before 23 November 2022](mailto:editor.jdmim@ub.ac.id).

We would like to inform you to cover the operating expenses of the journal, such as allowances to reviewers, layout editors and language proofreaders, and memberships of CrossRef-DOI, DOAJ, starting from 1 July 2022 Journal of Degraded and Mining Lands Management applies APC (article processing charge) of US\$ 100 for an article of no more than 12 pages (10-point font, including figures, tables, and references). An additional APC of \$20 per page is charged to ready-to-publish articles exceeding 12 pages. Regarding this, you are kindly requested to deposit US\$ 100 (IDR 1,560,000) to the following Bank account [before 23 November](mailto:editor.jdmim@ub.ac.id) to process your article further. Please kindly notify us when you have made the payment.

Name of A/c holder	: Eko Handayanto
Bank Name	: Bank BRI
Current A/c No.	: 005 101 140 930 500
Bank Address	: Jl. Kawi No. 20-22, Malang 65119, East Java, Indonesia
Branch	: Malang Kawi
Swift Code	: BRINDIA051

31°C Hujan datang

15:36 07/04/2023



Berikut ini Email Pernyataan Editor bahwa *Journal of Degraded and Mining Land Managements* sebagai Jurnal yang terindex di Scopus.

