



International Journal of Advanced Computer Science and Applications

Volume 13 Issue 12

December 2022



ISSN 2156-5570(Online)
ISSN 2158-107X(Print)



www.ijacsa.thesai.org

Editorial Preface

From the Desk of Managing Editor...

It may be difficult to imagine that almost half a century ago we used computers far less sophisticated than current home desktop computers to put a man on the moon. In that 50 year span, the field of computer science has exploded.

Computer science has opened new avenues for thought and experimentation. What began as a way to simplify the calculation process has given birth to technology once only imagined by the human mind. The ability to communicate and share ideas even though collaborators are half a world away and exploration of not just the stars above but the internal workings of the human genome are some of the ways that this field has moved at an exponential pace.

At the International Journal of Advanced Computer Science and Applications it is our mission to provide an outlet for quality research. We want to promote universal access and opportunities for the international scientific community to share and disseminate scientific and technical information.

We believe in spreading knowledge of computer science and its applications to all classes of audiences. That is why we deliver up-to-date, authoritative coverage and offer open access of all our articles. Our archives have served as a place to provoke philosophical, theoretical, and empirical ideas from some of the finest minds in the field.

We utilize the talents and experience of editor and reviewers working at Universities and Institutions from around the world. We would like to express our gratitude to all authors, whose research results have been published in our journal, as well as our referees for their in-depth evaluations. Our high standards are maintained through a double blind review process.

We hope that this edition of IJACSA inspires and entices you to submit your own contributions in upcoming issues. Thank you for sharing wisdom.

Thank you for Sharing Wisdom!

Kohei Arai
Editor-in-Chief
IJACSA
Volume 13 Issue 12 December 2022
ISSN 2156-5570 (Online)
ISSN 2158-107X (Print)

Editorial Board

Editor-in-Chief

Dr. Kohei Arai - Saga University

Domains of Research: Technology Trends, Computer Vision, Decision Making, Information Retrieval, Networking, Simulation

Associate Editors

Alaa Sheta

Southern Connecticut State University

Domain of Research: Artificial Neural Networks, Computer Vision, Image Processing, Neural Networks, Neuro-Fuzzy Systems

Domenico Ciuonzo

University of Naples, Federico II, Italy

Domain of Research: Artificial Intelligence, Communication, Security, Big Data, Cloud Computing, Computer Networks, Internet of Things

Doroła Kaminska

Lodz University of Technology

Domain of Research: Artificial Intelligence, Virtual Reality

Elena Scutelnicu

"Dunarea de Jos" University of Galati

Domain of Research: e-Learning, e-Learning Tools, Simulation

In Soo Lee

Kyungpook National University

Domain of Research: Intelligent Systems, Artificial Neural Networks, Computational Intelligence, Neural Networks, Perception and Learning

Krassen Stefanov

Professor at Sofia University St. Kliment Ohridski

Domain of Research: e-Learning, Agents and Multi-agent Systems, Artificial Intelligence, e-Learning Tools, Educational Systems Design

Renato De Leone

Università di Camerino

Domain of Research: Mathematical Programming, Large-Scale Parallel Optimization, Transportation problems, Classification problems, Linear and Integer Programming

Xiao-Zhi Gao

University of Eastern Finland

Domain of Research: Artificial Intelligence, Genetic Algorithms

CONTENTS

Paper 1: A Two-Step Approach to Weighted Bipartite Link Recommendations

Authors: Nathan Ma

PAGE 1 – 5

Paper 2: Hyperspectral Image Segmentation using End-to-End CNN Architecture with built-in Feature Compressor for UAV Systems

Authors: Muhammad Bilal, Khalid Munawar, Muhammad Shafique Shaikh, Ubaid M. Al-Saggaf, Belkacem Kada

PAGE 6 – 13

Paper 3: Design of Personalized VR Short Video Content Distribution Algorithm based on Artificial Neural Network

Authors: Han Zhong, Donghyuk Choi, Wonho Choi, Yu Zheng

PAGE 14 – 21

Paper 4: Modeling and Simulation of a Blockchain Consensus for IoT Node Data Validation

Authors: Bismark Tei Asare, Laurent Nana, Kester Quist-Aphetsi

PAGE 22 – 31

Paper 5: Microcontrollers Programming Framework based on a V-like Programming Language

Authors: Fernando Martínez Santa, Santiago Orjuela Rivera, Fredy H. Martínez Sarmiento

PAGE 32 – 39

Paper 6: Advantages of Digital Transformation Models and Frameworks for Business: A Systematic Literature Review

Authors: Seyedali Aghamiri, John Karima, Nadire Cavus

PAGE 40 – 47

Paper 7: Dynamic Time Warping Features Extraction Design for Quranic Syllable-based Harakaat Assessment

Authors: Noraimi Shafie, Azizul Azizan, Mohamad Zulkefli Adam, Hafiza Abas, Yusnaidi Md Yusof, Nor Azurati Ahmad

PAGE 48 – 54

Paper 8: A Novel Method for Recognizing Traffic Signs using Color and Texture Properties using the ELM Algorithm

Authors: Xiaoda Cao

PAGE 55 – 62

Paper 9: Global Pattern Feedforward Neural Network Structure with Bacterial Foraging Optimization towards Medicinal Plant Leaf Identification and Classification

Authors: Sapna R, S N Sheshappa, P Vijayakarthish, S Pravinth Raja

PAGE 63 – 70

Paper 10: Predicting Employee Turnover in IT Industries using Correlation and Chi-Square Visualization

Authors: Bagus Priambodo, Yuwan Jumaryadi, Sarwati Rahayu, Nur Ani, Anita Ratnasari, Umniy Salamah, Zico Pratama Putra, Muhamad Ofong

PAGE 71 – 75

Paper 11: Arabic Location Named Entity Recognition for Tweets using a Deep Learning Approach

Authors: Bedour Swayelh Alzaidi, Yoosef Abushark, Asif Irshad Khan

PAGE 76 – 83

Paper 12: Low Complexity Classification of Thermophilic Protein using One Hot Encoding as Protein Representation

Authors: Meredith Susanty, Rukman Hertadi, Ayu Purwarianti, Tati Latifah Erawati Rajab

PAGE 84 – 89

Paper 13: Comparison of Naive Bayes and SVM Classification in Grid-Search Hyperparameter Tuned and Non-Hyperparameter Tuned Healthcare Stock Market Sentiment Analysis

Authors: KaiSiang Chong, Nathar Shah

PAGE 90 – 94

Paper 14: Intrusion Detection System using Long Short Term Memory Classification, Artificial Raindrop Algorithm and Harmony Search Algorithm

Authors: Meghana G Raj, Santosh Kumar Pani

PAGE 95 – 103

Paper 15: Social Media Multimodal Information Analysis based on the BiLSTM-Attention-CNN-XGBoost Ensemble Neural Network

Authors: Ling Jixian, An Gang, Su Zhihao, Song Xiaoqiang

PAGE 104 – 111

Paper 16: Design of Human-Computer Interaction Product Interface of Intelligent Service System based on User Experience

Authors: Xiaoli Xiong, Yongguang Hou

PAGE 112 – 121

Paper 17: Age Estimation on Human Face Image Using Support Vector Regression and Texture-Based Features

Authors: Jesy S Amelia, Wahyono

PAGE 122 – 129

Paper 18: A Fast and Effective Method for Intrusion Detection using Multi-Layered Deep Learning Networks

Authors: A. Srikrishnan, Arun Raaza, Ebenezer Abishek. B, V. Rajendran, M. Anand, S. Gopalakrishnan, Meena. M

PAGE 130 – 142

Paper 19: Footwear Sketches Colorization Method based on Generative Adversarial Network

Authors: Xin Li, Yihang Zhang

PAGE 143 – 149

Paper 20: Multi-Exposure Image Fusion based on Window Segmentation and a Laplacian Pyramid for Chip Package Appearance Quality Detection

Authors: Fei Hao, Jiatong Song, Jiahao Sun, Yang Fu

PAGE 150 – 157

Paper 21: Image Matting using Neural Networks

Authors: Nrupatunga J, Swarnalatha K S

PAGE 158 – 162

Paper 22: New Text Steganography Technique based on Multilayer Encoding with Format-Preserving Encryption and Huffman Coding

Authors: Mohammed Abdul Majeed, Rossilawati Sulaiman, Zarina Shukur

PAGE 163 – 172

Paper 23: Secure Palmprint Recognition based on Multispectral Sequential Capture

Authors: Amine AMRAOUI, Mounir AIT KERROUM, Youssef FAKHRI

PAGE 173 – 185

Paper 24: Combining the Characteristics of the Buddha Statue from Photogrammetry and 3D Creation to Simulate the Combination of the Art of Creating Buddha Statue

Authors: Jirawat Sookkaew, Nakarin Chaikaew

PAGE 186 – 191

Paper 25: Hardware Trojan Detection based on Testability Measures in Gate Level Netlists using Machine Learning

Authors: Thejaswini P, Anu H, Aravind H S, D Mahesh Kumar, Syed Asif, Thirumalesh B, Pooja C A, Pavan G R

PAGE 192 – 200

Paper 26: Multi-Objective Optimal Path Planning for Autonomous Robots with Moving Obstacles Avoidance in Dynamic Environments

Authors: Kadari Neeraja, G Narsimha

PAGE 201 – 210

Paper 27: Eye-Vision Net: Cataract Detection and Classification in Retinal and Slit Lamp Images using Deep Network

Authors: Binju Saju, Rajesh R

PAGE 211 – 221

Paper 28: Fast Comprehensive Secret Sharing using Naive Image Compression

Authors: Heri Prasetyo, Kuku Caezaocta Prayuda

PAGE 222 – 229

Paper 29: The Effect of Blockchain using Big data and the Internet of Things in Healthcare

Authors: Bassant Nabil Mohamed, Hatem Abdelkader

PAGE 230 – 238

Paper 30: Multi Oral Disease Classification from Panoramic Radiograph using Transfer Learning and XGBoost

Authors: Priyanka Jaiswal, Vijay Katkar, S. G. Bhirud

PAGE 239 – 249

Paper 31: Dilated Multi-Activation Autoencoder to Improve the Performance of Sound Separation Mechanisms

Authors: Ghada Dahy, Mohammed A. A. Refaey, Reda Alkhoribi, M. Shoman

PAGE 250 – 257

Paper 32: A Machine Learning Ensemble Classifier for Prediction of Brain Strokes

Authors: Samaa A. Mostafa, Doaa S. Elzanfaly, Ahmed E. Yakoub

PAGE 258 – 266

Paper 33: Feedforward Deep Learning Optimizer-based RNA-Seq Women's cancers Detection with a hybrid Classification Models for Biomarker Discovery

Authors: Waleed Mahmoud Ead, Marwa Abouelkhir Abdelazim, Mona Mohamed Nasr

PAGE 267 – 276

Paper 34: Transfer Learning for Closed Domain Question Answering in COVID-19

Authors: Nur Rachmawati, Evi Yulianti

PAGE 277 – 285

Paper 35: A Cascaded Feature Extraction for Diagnosis of Ovarian Cancer in CT Images

Authors: Arathi B, Shanthini A

PAGE 286 – 294

Paper 36: Big Data and Internet of Things Web Service Management to Support Salt Agriculture Automation

Authors: Muhammad Choirul Imam, Dedi Trisnawarman, Hugeng, Hetty Karunia Tunjung Sari

PAGE 295 – 300

Paper 37: Recognition of Copy Move Forgeries in Digital Images using Hybrid Optimization and Convolutional Neural Network Algorithm

Authors: Anna Gustina Zainal, Chamandeep Kaur, Mohammed Saleh Al Ansari, Ricardo Fernando Cosio Borda, A. Nageswaran, Rasha M. Abd El-Aziz

PAGE 301 – 311

Paper 38: Event Detection and Classification Using Deep Compressed Convolutional Neural Network

Authors: K. Swapnika, D. Vasumathi

PAGE 312 – 322

Paper 39: Estimation of Transmission Rate and Recovery Rate of SIR Pandemic Model Using Kalman Filter

Authors: Wahyu Sukestyastama Putra, Afrig Aminuddin, Ibnu Hadi Purwanto, Rakhma Shafrida Kurnia, Ika Asti Astuti

PAGE 323 – 328

Paper 40: Tracking The Sensitivity of The Learning Models Toward Exact and Near Duplicates

Authors: Menna Ibrahim Gabr, Yehia Helmy, Doaa S. Elzanfaly

PAGE 329 – 338

Paper 41: A Hybrid Optimization Approach with Deep Learning Technique for the Classification of Dental Caries

Authors: Riddhi Chawla, Konda Hari Krishna, Araddhana Arvind Deshmukh, K. V. Daya Sagar, Mohammed Saleh Al Ansari, Ahmed I. Taloba

PAGE 339 – 347

Paper 42: FDeep: A Fog-based Intrusion Detection System for Smart Home using Deep Learning

Authors: Tahani Gazdar

PAGE 348 – 355

Paper 43: A Novel Approach to Cashew Nut Detection in Packaging and Quality Inspection Lines

Authors: Van-Hung Pham, Ngoc-Khoat Nguyen, Van-Minh Pham

PAGE 356 – 361

Paper 44: Improvement Classification Approach in Tomato Leaf Disease using Modified Visual Geometry Group (VGG)-InceptionV3

Authors: Jiraporn Thomkaew, Sarun Intakosum

PAGE 362 – 370

Paper 45: Deep Neural Network Training and Testing Datasets for License Plate Recognition

Authors: Ishtiaq Rasool Khan, Saleh M. Alshomrani, Muhammad Murtaza Khan, Susanto Rahardja

PAGE 371 – 379

Paper 46: Prediction of Oil Production through Linear Regression Model and Big Data Tools

Authors: Rehab Alharbi, Nojood Alageel, Maryam Alsayil, Rahaf Alharbi, A'aeshah Alhakamy

PAGE 380 – 387

Paper 47: A Comparison of Pathfinding Algorithm for Code Optimization on Grid Maps

Authors: Azyan Yusra Kapi, Mohd Shahrizal Sunar, Zeyad Abd Algfoor

PAGE 388 – 393

Paper 48: Integrating User Reviews and Issue Reports of Mobile Apps for Change Requests Detection

Authors: Laila Al-Safoury, Akram Salah, Soha Makady

PAGE 394 – 401

Paper 49: Research on Quantitative Security Protection Technology of Distribution Automation Nodes based on Attack Tree

Authors: Yinfeng Han, Yong Tang, Xiaoping Kang, Hao Jiang, Xiaoyang Song

PAGE 402 – 409

Paper 50: Analysis and Detection of Tomatoes Quality using Machine Learning Algorithm and Image Processing

Authors: Haichun Zuo

PAGE 410 – 419

Paper 51: Electricity Theft Detection using Machine Learning

Authors: Ivan Petrlík, Pedro Lezama, Ciro Rodriguez, Ricardo Inquilla, Julissa Elizabeth Reyna-González, Roberto Esparza

PAGE 420 – 425

Paper 52: Machine Learning for Securing Traffic in Computer Networks

Authors: Ahmed BaniMustafa, Mahmoud Baklizi, Khalaf Khatatneh

PAGE 426 – 435

Paper 53: Fish Detection in Seagrass Ecosystem using Masked-Otsu in HSV Color Space

Authors: Sri Dianing Asri, Indra Jaya, Agus Buono, Sony Hartono Wijaya

PAGE 436 – 440

Paper 54: Prioritizing the Factors Affecting the Application of Industry 4.0 Technology in Electrical Appliance Manufacturing using a Fuzzy Analytical Network Process Approach

Authors: Apiwat Krommuang, Atchari Krommuang

PAGE 441 – 453

Paper 55: The Prediction of Pediatric Outpatient No-Show Visits by Employing Machine Learning Framework

Authors: Abdulwahhab Alshammari, Hanoof Alaboodi, Riyad Alshammari

PAGE 454 – 458

Paper 56: Principal Component Analysis Based Hybrid Speckle Noise Reduction Technique for Medical Ultrasound Imaging

Authors: Yasser M. Kadah, Ahmed F. Elnokrashy, Ubaid M. Alsaggaf, Abou-Bakr M. Youssef

PAGE 459 – 468

Paper 57: Application of Artificial Intelligence-Genetic Algorithms to Select Stock Portfolios in the Asian Markets

Authors: Luu Thu Quang

PAGE 469 – 476

Paper 58: Automatic Detection of Alzheimer Disease from 3D MRI Images using Deep CNNs

Authors: Nermin Negied, Ahmed SeragEldin

PAGE 477 – 482

Paper 59: Multi-Modal Medical Image Fusion Using Transfer Learning Approach

Authors: Shrida Kalamkar, Geetha Mary A

PAGE 483 – 488

Paper 60: The Optimal Route Selection Model of Fresh Agricultural Products Transportation Based on Bee Colony Algorithm

Authors: Qingqing Ren

PAGE 489 – 499

Paper 61: An Enhanced Face Detection System using A Novel FIS-CDNN Classifier

Authors: Santhosh S, S. V. Rajashekararadhya

PAGE 500 – 511

Paper 62: Performance Analysis of Machine Learning-based Detection of Sinkhole Network Layer Attack in MANET

Authors: Sivanesan N, K. S. Archana

PAGE 512 – 520

Paper 63: Friendly Group Architecture for Securely Promoting Selfish Node Cooperation in Wireless Ad-hoc Network

Authors: Rajani K C, Aishwarya P, Manjunath S

PAGE 521 – 527

Paper 64: Implementation of Fuzzy Expert System on Skin Diseases

Authors: Admi Syarif, Mayda B Fauzi, Aristoteles, Agus Wantoro

PAGE 528 – 536

Paper 65: Dual U-Net with Resnet Encoder for Segmentation of Medical Images

Authors: Syed Qamrun Nisa, Amelia Ritahani Ismail

PAGE 537 – 542

Paper 66: Rapid Modelling of Machine Learning in Predicting Office Rental Price

Authors: Thuraiya Mohd, Muhamad Harussani, Suraya Masrom

PAGE 543 – 549

Paper 67: Hybrid Modeling to Classify and Detect Outliers on Multilabel Dataset based on Content and Context

Authors: Lusiana Efrizoni, Sarjon Defit, Muhammad Tajuddin

PAGE 550 – 559

Paper 68: Web based Mitosis Detection on Breast Cancer Whole Slide Images using Faster R-CNN and YOLOv5

Authors: Rajasekaran Subramanian, R. Devika Rubi, Rohit Tapadia, Katakam Karthik, Mohammad Faseeh Ahmed, Allam Manudeep

PAGE 560 – 565

Paper 69: A Novel Compound Feature based Driver Identification

Authors: Md. Abbas Ali Khan, Mohammad Hanif Ali, AKM Fazlul Haque, Md. Iktidar Islam, Mohammad Monirul Islam

PAGE 566 – 573

Paper 70: BrainNet-7: A CNN Model for Diagnosing Brain Tumors from MRI Images based on an Ablation Study

Authors: Md Harun or Rashid, Salma Akter, Amatul Bushra Akhi

PAGE 574 – 581

Paper 71: Research on Real-time Monitoring of Video Images of Traffic Vehicles and Pedestrian Flow using Intelligent Algorithms

Authors: Xiujuan Dong, Jianping Lan, Wenhuan Wu

PAGE 582 – 589

Paper 72: Towards an Accurate Breast Cancer Classification Model based on Ensemble Learning

Authors: Aya Hesham, Nora El-Rashidy, Amira Rezk, Noha A. Hikal

PAGE 590 – 602

Paper 73: A Deep Learning-based Model for Evaluating the Sustainability Performance of Accounting Firms

Authors: Cui Hu

PAGE 603 – 613

Paper 74: A Hierarchical ST-DBSCAN with Three Neighborhood Boundary Clustering Algorithm for Clustering Spatio-temporal Data

Authors: Amalia Mabrina Masbar Rus, Zulaiha Ali Othman, Azuraliza Abu Bakar, Suhaila Zainudin

PAGE 614 – 626

Paper 75: Research on Asymmetry of Two-Queue Cycle Query Threshold Service Polling System

Authors: Man Cheng, Dedu Yin, Xinchun Wang

PAGE 627 – 635

Paper 76: Transformer-based Cross-Lingual Summarization using Multilingual Word Embeddings for English - Bahasa Indonesia

Authors: Achmad F. Abka, Kurniawati Azizah, Wisnu Jatmiko

PAGE 636 – 645

Paper 77: Analysis of Content Based Image Retrieval using Deep Feature Extraction and Similarity Matching

Authors: Anu Mathews, Sejal N, Venugopal K R

PAGE 646 – 655

Paper 78: Emotion Recognition on Multimodal with Deep Learning and Ensemble

Authors: David Adi Dharma, Amalia Zahra

PAGE 656 – 663

Paper 79: Fault Diagnosis Technology of Railway Signal Equipment based on Improved FP-Growth Algorithm

Authors: Yueqin Yang

PAGE 664 – 671

Paper 80: A Systematic Literature Review: Internet of Things on Smart Greenhouse

Authors: Dodi Yudo Setyawan, Warsito, Roniyus Marjunus, Nurfiiana, Rahmalia Syahputri

PAGE 672 – 679

Paper 81: An Adaptive Texture Enhancement Algorithm for AR Live Screen Based on Approximate Matching

Authors: Panpan Yang, Lingfei Ma, Chao Yin, Yang Ping

PAGE 680 – 686

Paper 82: Deep Primary and Secondary Fusion Transformer Based on Internet of Things Technology

Authors: Xiaohua Zhang, Yuping Wu, Jianjun Chen, Jie Dong, Yu Yue

PAGE 687 – 693

Paper 83: Research on High Voltage Cable Condition Detection Technology based on Wireless Sensor Network

Authors: Yang Zhao, Qing Liu, Tong Shang, Yingqiang Shang, Rong Xia, Shuai Shao

PAGE 694 – 703

Paper 84: Research on the Application of Improved Decision Tree Algorithm based on Information Entropy in the Financial Management of Colleges and Universities

Authors: Huirong Zhao

PAGE 704 – 714

Paper 85: A Semantic NoSQL Application Program Interface for Big Data

Authors: K. ElDahshan, E. K. Elsayed, H. Mancy, A. AbuBakr

PAGE 715 – 726

Paper 86: Big Data Application in Forecasting Financial Investment of e-Commerce Industry for Sustainability

Authors: Yanfeng Zhang

PAGE 727 – 736

Paper 87: Embedded Monitoring Method of Greenhouse Environment based on Wireless Sensor Network

Authors: Weixue Liu

PAGE 737 – 746

Paper 88: Research on the Application of Virtual Technology-based Posture Detection Device in Swimming Teaching

Authors: Hongming Guo, Jingang Fan

PAGE 747 – 755

Paper 89: Dynamic Force-directed Graph with Weighted Nodes for Scholar Network Visualization

Authors: Khalid Al-Walid Mohd. Aris, Chitra Ramasamy, Teh Noranis Mohd. Aris, Maslina Zolkepli

PAGE 756 – 763

Paper 90: The Role of Machine Learning in Remote Sensing for Agriculture Drought Monitoring: A Systematic Review

Authors: Aries Suharso, Yeni Hediyei, Suria Darma Tarigan, Yandra Arkeman

PAGE 764 – 771

Paper 91: Research on Intellectual Dichotomiser 3 Decision Tree Algorithm Model for Financial Analysis of Colleges and Universities

Authors: Sujuan Guo

PAGE 772 – 782

Paper 92: Clustering-based Automated Requirement Trace Retrieval

Authors: Nejoood Hashim Al-walidi, Shahira Shaaban Azab, Abdelaziz Khamis, Nagy Ramadan Darwish

PAGE 783 – 792

Paper 93: Application of Multi-Scale Convolution Neural Network Optimization Image Defogging Algorithm in Image Processing

Authors: Weihan Zhu

PAGE 793 – 801

Paper 94: Data Clutter Reduction in Sampling Technique

Authors: Nur Nina Manarina Jamalludin, Zainura Idrus, Zanariah Idrus, Ahmad Afif Ahmarofi, Jahaya Abdul Hamid, Nurul Husna Mahadzir

PAGE 802 – 811

Paper 95: Research on the Optimization Problem of Agricultural Product Logistics based on Genetic Algorithm under the Background of Sharing Economy

Authors: Na Wang

PAGE 812 – 820

Paper 96: Application Research of Trademark Recognition Technology based on SIFT Feature Recognition Algorithm in Advertising Design

Authors: Weina Zhang

PAGE 821 – 829

Paper 97: Utilizing Deep Learning in Arabic Text Classification Sentiment Analysis of Twitter

Authors: Nehad M. Ibrahim, Wael M. S. Yafooz, Abdel-Hamid M. Emara, Ahmed Abdel-Wahab

PAGE 830 – 838

Paper 98: Synthesis of Comments to Social Media Posts for Business Applications

Authors: Peter Adebawale Olujimi, Abejide Ade-Ibijola

PAGE 839 – 848

Paper 99: PDE: A Real-Time Object Detection and Enhancing Model under Low Visibility Conditions

Authors: Zhiying Li, Shuyuan Lin, Zhongming Liang, Yongjia Lei, Zefan Wang, Hao Chen

PAGE 849 – 858

Paper 100: Design and Implementation of an Unreal Engine 4-Based Smart Traffic Control System for Smart City Applications

Authors: Md. Intiaz Hossain Subree, Md. Rakib Hasan, Maksuda Haider Sayma

PAGE 859 – 867

Paper 101: Emotion Detection from Text and Sentiment Analysis of Ukraine Russia War using Machine Learning Technique

Authors: Abdullah Al Maruf, Zakaria Masud Ziyad, Md. Mahmudul Haque, Fahima Khanam

PAGE 868 – 882

Paper 102: An Analytical Model of Induction Motors for Rotor Slot Parametric Design Performance Evaluation

Authors: Ahamed Ibrahim Sithy Juhaniya, Ahmad Asrul Ibrahim, Muhammad Ammirul Atiqi Mohd Zainuri, Mohd Asyraf Zulkifley

PAGE 883 – 889

Paper 103: BBVD: A BERT-based Method for Vulnerability Detection

Authors: Weichang Huang, Shuyuan Lin, Chen Li

PAGE 890 – 898

Paper 104: Hybrid Deep Learning Architecture for Land Use: Land Cover Images Classification with a Comparative and Experimental Study

Authors: Salhi Wiam, Tabiti Khouloud, Honnit Bouchra, SAIDI Mohamed Nabil, KABBAJ Adil

PAGE 899 – 910

Paper 105: A Real-Time Open Public Sources Text Analysis System

Authors: Chi Mai Nguyen, Phat Trien Thai, Van Tuan Nguyen, Duy Khang Lam

PAGE 911 – 917

- Paper 106: Analysis of EEG Signals in a Patient with Spastic Cerebral Palsy Undergone Dolphin-Assisted Therapies
Authors: Oswaldo Morales Matamoros, Erika Yolanda Aguilar del Villar, Abril P´erez S´anchez, Jes´us Jaime Moreno Escobar, Ricardo Tejeida Padilla
PAGE 918 – 929
- Paper 107: Dynamic Light Settings as Data Augmentations for Automated Scratch Detection
Authors: GRAVE Valentin, FUKUDA Osamu, YEOH Wen Liang, OKUMURA Hiroshi, YAMAGUCHI Nobuhiko
PAGE 930 – 937
- Paper 108: Multi-Task Multi-User Offloading in Mobile Edge Computing
Authors: Nouhaila Moussammi, Mohamed El Ghamry, Abdellah Idrissi
PAGE 938 – 943
- Paper 109: Performance Comparison of Multiple Neural Networks for Fault Detection of Sensors Array in Oil Heating Reactor
Authors: Mai Mustafa, Sawsan Morkos Gharghory, Hanan Ahmed Kamal
PAGE 944 – 953
- Paper 110: The Impact of Peer Code Review on Software Maintainability in Open-Source Software: A Case Study
Authors: Aziz Nanthaamornphong, Thanyarat Kitpanich
PAGE 954 – 965
- Paper 111: Bi-LSTM Model to Recognize Human Activities in UAV Videos using Inflated I3D-ConvNet
Authors: Sireesha Gundu, Hussain Syed
PAGE 966 – 977
- Paper 112: Aspect-based Sentiment Analysis for Bengali Text using Bidirectional Encoder Representations from Transformers (BERT)
Authors: Moythry Manir Samia, Alimul Rajee, Md. Rakib Hasan, Mohammad Omar Faruq, Pintu Chandra Paul
PAGE 978 – 986
- Paper 113: Drought Forecasting in Alibori Department in Benin using the Standardized Precipitation Index and Machine Learning Approaches
Authors: Rodrigue B. W. VODOUNON, Henoc SOUDE, Oss´enatou MAMADOU
PAGE 987 – 994
- Paper 114: Smart Monitoring System using Internet of Things: Application for Agricultural Management in Benin
Authors: P´elagie HOUNGUE, Romaric SAGBO, Gilles DAHOUE, Julien KOMACLO
PAGE 995 – 1001
- Paper 115: Measurement Tool for Exposure Techniques in X-ray Ionizing Radiation Equipment
Authors: Edwin Arley Cortes Puentes, Andres Gomez Rodriguez, Fernando Martinez Santa
PAGE 1002 – 1009
- Paper 116: Encrypted Storage Method of Oral English Teaching Resources based on Cloud Platform
Authors: Tongsheng Si
PAGE 1010 – 1020
- Paper 117: Denoising Method of Interior Design Image based on Median Filtering Algorithm
Authors: Tao Li
PAGE 1021 – 1029

Paper 118: Application of CAD Aided Intelligent Technology in Landscape Design

Authors: Juan Du

PAGE 1030 – 1037

Paper 119: Filtering and Enhancement Method of Ancient Architectural Decoration Image based on Neural Network

Authors: Yanan Wang

PAGE 1038 – 1047

Paper 120: A Neural Network-Based Algorithm for Weak Signal Enhancement in Low Illumination Images

Authors: Dawei Yin, Jianwei Li

PAGE 1048 – 1056

Paper 121: Digital Intelligent Management Platform for High-Rise Building Construction Based on BIM Technology

Authors: Rui Deng, Chun'e Li

PAGE 1057 – 1067

Paper 122: Research on Key Technologies of Smart City Building Interior Decoration Construction based on In-Depth Learning

Authors: Li Zhang, Aimin Qin

PAGE 1068 – 1076

Paper 123: Research on Face Recognition Technology of Subway Automatic Ticketing System based on Neural Network and Deep Learning

Authors: Shuang Wu, Xin Lin, Tong Yao

PAGE 1077 – 1085

Paper 124: Research on Improved Xgboost Algorithm for Big Data Analysis of e-Commerce Customer Churn

Authors: Li Li

PAGE 1086 – 1094

A Systematic Literature Review: Internet of Things on Smart Greenhouse

Dodi Yudo Setyawan¹, Warsito^{2*}, Roniyus Marjunus³, Nurfiana⁴, Rahmalia Syahputri⁵

Doctoral Program of Mathematics and Natural Sciences, Lampung University¹

Department of Computer System, Faculty of Computer Science, Institute Informatics and Business Darmajaya^{1,4}

Department of Physics, Faculty of Mathematics and Natural Sciences^{2,3}

Department of Informatics Engineering, Faculty of Computer Science, Institute Informatics and Business Darmajaya⁵
Lampung University, Bandar Lampung, Indonesia^{1,2,3}

Abstract—The Increasing food needs and climate instability require researchers to innovate agriculture using smart greenhouses that are integrated with the Internet of Things (IoT). The Systematic Literature Review (SLR) begins with determining the topic keywords followed by searching the publisher link. It obtains 301 publications to be reviewed, 58 of which address the research questions posed. This study aims to collect and analyze in depth various knowledge about the Internet of Things Smart Greenhouse regarding sensors, methods used and publishers who publish the most related topics and the possibility of a research gap. The findings are as many as 12 publications that use temperature and humidity sensors and use the research and development methods integrated with Artificial intelligence methods, of which 62.1% do not use the datasets and 37.9% use the datasets. It obtains two possibilities of a research gap, namely improvising the algorithm and the dataset used and placing full control on the microcontroller development board and making IoT a supporting tool.

Keywords—IoT; SLR; Smart greenhouse; agriculture; research gap

I. INTRODUCTION

As the world's population grows and the need for food continues to increase and the decrease in agricultural land that is used as land for residence requires us to continue to innovate to meet these needs. Not only that climate change, which is increasingly erratic, make the planting period of food crops unstable. One of the innovations that can be done is to use a greenhouse in the agricultural process, by using a greenhouse the planting process can be carried out continuously regardless of the current climatic conditions. The placement of a greenhouse can also be done in places with a limited area such as the rooftop of a building. However, the greenhouse is just a place to grow crops, there needs to be innovation which will later be known as the Internet of Things Smart Greenhouse (IoTSG). These technological innovations include automation, artificial intelligence and the internet of things. The integration of these innovations is proven to have a good impact on agricultural processes and results in greenhouses as described below. This study dissected and dug deeper into various IoTSG literature regarding the sensors used, the methods applied, publisher statistics and the possibility of research gaps that were obtained so that improvisation of the IoTSG could be done.

More specifically about smart green houses, by using smart greenhouses, pest control of food crops can be done easily. As has been done by [1], the robot sprays pesticides around the plants for pest control. Preventive measures by predicting plant diseases in greenhouses can also be carried out as done by [2], [3] on cucumber and vegetable crops.

Preventive measures not only in controlling plant pest diseases, the harvesting process of mushroom plants can also be carried out by robots in a greenhouse environment [4], [5]. Irrigation management in greenhouses and large-scale planting areas can be done easily with the integration of IoT technology and remote sensing [6], [7]. Using the water more effectively and efficiently is an important aspect and needs to be taken seriously. Adequacy of water sources can be monitored and controlled properly by farmers, maintainers and administrators using mobile apps.

Various mobile apps based on the IoT platform can be used as part of an agriculture information system, such as in the FIWARE case [8], [9], this system allows every mobile app holder to convey information models sent to the cloud such as planting, harvesting, product packing, transportation and distribution of agricultural products. All the information is stored properly in the cloud database.

The development of smart greenhouses equipped with sensors, actuators and cloud connections as well as artificial intelligence algorithms has also been carried out, but the IoT platform system is still suspended [10]. The system that is built is called an automated hybrid, some systems work automatically and some are controlled manually.

In sensor data acquisition, the measurement accuracy of the measuring instrument is very important so that the resulting decision will be very accurate. What needs to be done is the calibration of measuring instruments made by comparison with standard measuring instruments. Not only on measuring instruments or IoT sensor systems, calibration is also carried out on measuring instruments or geomagnetic sensor systems and soil temperature sensors that produce the MAG3119 standard deviation sensor for x coordinates of 8.5, y coordinates of 2.66 and z coordinates of 1.9 and standard deviation of the DHT11 sensor of 0.1161 [11].

*Corresponding Author.

II. RESEARCH METHODOLOGY

This SLR was carried out with the ultimate goal of knowing the main information about the IoTSG that was documented. The SLR that was carried out was different from Traditional Literature Review (TLR), the SLR was carried out methodically and systematically. A good review is a review that can be imitated by other researchers and produces a better scientific value. In addition, it can also evaluate all existing evidence on a validated research topic. The SLR process that has been carried out can be seen in Fig. 1.

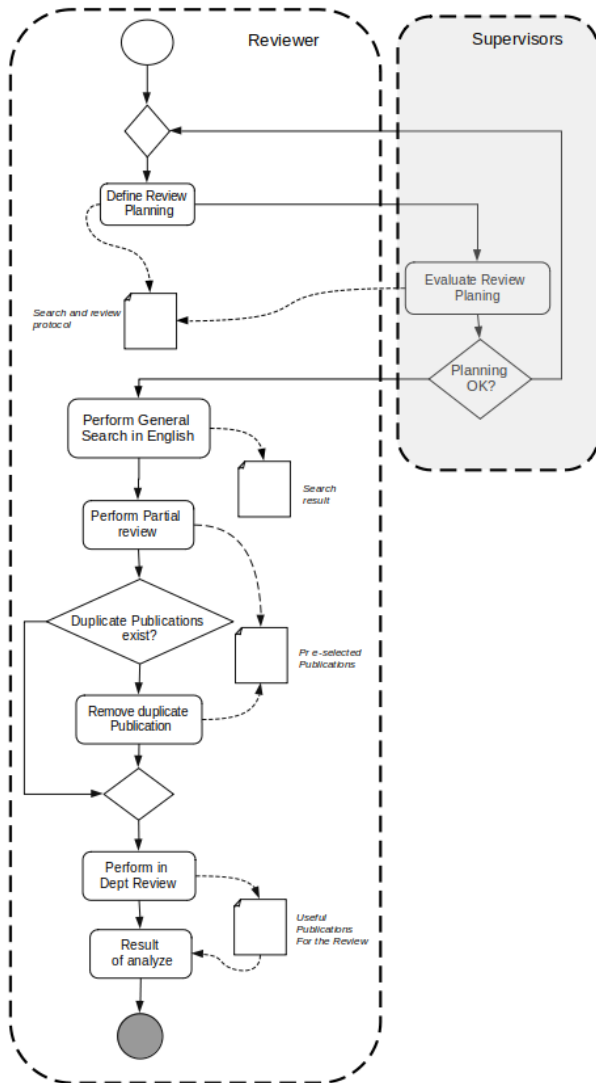


Fig. 1. SLR process [12].

The first thing to do in this SLR is planning a literature review by considering the needs of future research and defining a literature search protocol. Next, the supervisor analyzes and assesses its adequacy. Literature searches were carried out on various sources such as Scencedirect and IEEE. This search was conducted using only English keywords. Next, conduct an initial review of the search results that have been obtained to optimize publications that are very useful. To

delete duplicate publications and the rest of the results of this initial review, an in-depth analysis is carried out. The planning and realization stages of the SLR are described next, while the analysis of the results is presented in Section 4.

A. SLR Planning

To achieve the objectives as described above, Research Questions (RQ) are prepared to define research needs in more detail.

RQ1: What are the sensors used

RQ2: What are the methods used

RQ3: What publishers most related topics

RQ4: What are the research gap possibility

Literature search links include: Science Direct (<https://www.sciencedirect.com/>), IEEE (<https://ieeexplore.ieee.org/Xplore/home.jsp>) and MDPI publisher (<https://www.mdpi.com/>).

B. Search String

The search string uses keywords from the pre-planned research topic. There are four keywords used in this search, namely: IoT, farming, agriculture and greenhouse. The combination of four keywords above for literature searches on each search link is as follows:

C. IoT and Farming and Agriculture and Greenhouse

The search year is limited to 2017 to 2022. Search results are entered into the Zotero reference manager (<https://www.zotero.org/>) by forming a folder with the name of each folder, including: Scencedirect and IEEE.

III. RESULT AND DISCUSSION

A. Search String Review

At this stage, a partial review of literature obtained was carried out to obtain the most potential literature in this study. This partial review was carried out on the title and abstract, but in certain specifications a review was carried out on the introduction and conclusion. Definitions related to RQ were included and potentially useful literature was obtained. The realization of this SLR was only done with one search string. The total articles obtained were 301 articles as shown in Fig. 2.

The results were generally displayed at the beginning and the answer for each RQ was placed after it. From each reviewed paper, on average, each paper uses more than one sensor. The general number of sensors used were 26 sensors as shown in Fig. 3. The most widely used sensors in IoTSG were temperature and humidity sensors as many as 12 and the second most sensors are soil moisture sensors with 10.

The method used in each paper was a research and development method integrated with various other methods such as the addition of artificial intelligence as decision support such as recurrent neural networks, artificial neural networks, fuzzy logic, decision trees and so on.

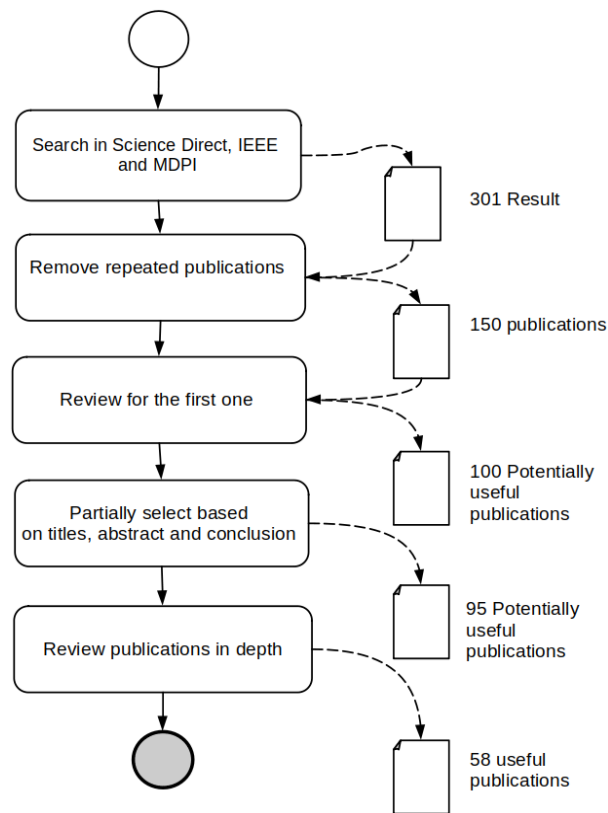


Fig. 2. SLR Step.

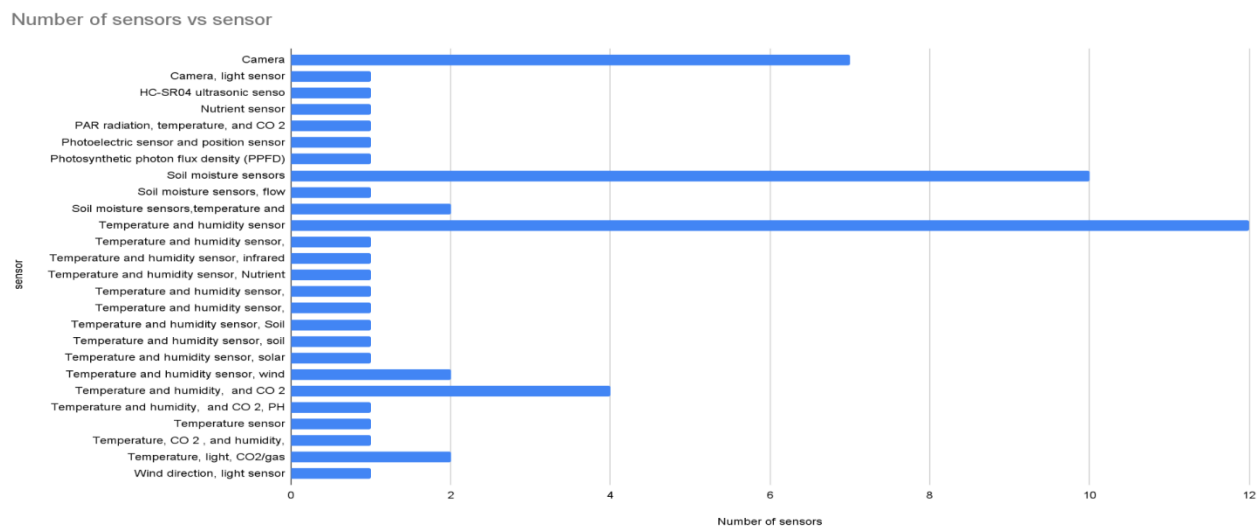


Fig. 3. Sensors used

Development of a meteorological information system using the KOSEN Weather Station (KWS) [13], the Google web toolkit implementing the inter-browser communication method of remote method calls [14], sharing and linking data using partnerships for data innovation that provide the information needs of farmers [15]. The system can help farmers with weather forecasts that are stored in the cloud and information can be viewed via a web that is easy for farmers to understand. To compare the level of accuracy of KWS, the

same data was also built using the WXT520 sensor and it was proven that KWS was more accurate.

In greenhouses, there is a way to maximize plant growth by adding lighting using LEDs [16]. The method used was research and development to build an automatic control system for adding lighting using three LEDs among others: red LED, blue LED and a combination of both. Plant growth was observed using IoT, the results obtained from the addition of lighting were better seen from the leaf area index, leaf area

rate index and leaf weight rate, besides that the photosynthetic activity of plants was the highest if green light was added in terms of redistribution of quanta absorbed by the plant the entire leaf thickness [17].

By utilizing the application of IoT technology in agriculture, it is proven to increase productivity and production, harvest quality and resource efficiency. This research and development has been carried out using case studies and models as a service approach [18]–[21] real time and historical data and predictive models can be accessed via the web [22]. Firebase servers [23], one of the protocols used is LoRa which is considered sufficient to transmit small data from sensors to the cloud [24]–[26]. The system helps farmers because it produces a Decision Support System (DSS).

To improve the sustainability of agricultural cultivation, research and development methods are used integrated with deep learning, maps of planting sustainability forecasts can be obtained in real time using IoT networks [27].

Energy use in agricultural IoT systems is very important, it is necessary to pay attention and take into account the peak times and prediction models of energy use in IoT-based greenhouses have been made. Various algorithms have been used with research and development integrated with machine learning algorithms such as artificial neural networks, support vector machines, extreme gradient boost and random forest, in research [28] it was found that random forest produces predictions with the highest accuracy compared to other algorithms of 92 %. Integrate the Multi agent System to build greenhouse energy management to optimize energy use for two seasons in one year [29]. The original genetic algorithm was also used for predictive lighting for lighting control in the greenhouse, from the result of measurements that was carried out on growth there was no difference between greenhouses with lighting control and those without lighting control, but there was an efficient use of electrical energy from greenhouses that used lighting control [30].

Various algorithms have been developed for smart agriculture in greenhouses for various estimates that produce contributions, one of which is the algorithm that has been developed is a Repetitive Neural Network (RNN) which can estimate plant growth rates in greenhouses from 0.75 to 0.81 in all growth periods [31].

To obtain data from physical dynamics, a greenhouse requires sensors that are integrated in a wide range. A sensor network was built in a wireless sensor network (WSN) using a wireless Zigbee module with a mesh topology to sense air temperature, CO₂ levels [32]. In addition to the Zigbee module, you can also use the SL900A module in the UHF band [33]. The measurement of wave attenuation for the 2.4 GHz frequency band that penetrated the greenhouse was also measured to determine the effect of the waves on plants [34]. The data loss rate between data acquisition units in WSN was also measured, where data loss at the gateway was 1.52%, between gateways and server was 0.4% [35].

Not only in terms of sensor networks in greenhouses, the development of robot agriculture with a three-device system (3DS) for growth plant monitoring and pest management used

the main features of spectroscopy in Automated Guided Vehicles (AGV) [36]. In addition, by utilizing image analysis, image processing technology based on IoT cameras on tomato cultivation in greenhouses was able to estimate the number of blooming flowers, ripe fruit and harvest date with an error of approximately 2.03 days which can support plant growth management [37]. Sending the water level measurement value from the HC-SR04 sensor using a short message service shows good results and efficient [38], in maximum water level is 3.182m have resolution about 19.2 mm [39] and using MW22B multi turn Potentiometer have obtained vertical resolution about 0.03 m and error is 1.11% [40]. Detection of whole tomatoes used research and development methods by integrating Convolutional Neural Network (R-CNN) with an accuracy of 87.83% [41]. While using deep learning based classification and detection, the accuracy rate reached 99% [42], this method showed that the method used had great potential for predicting tomato ripeness and yield. A genetic algorithm was used to predict tomato growth using data on air temperature, PAR radiation and CO₂ concentration [43].

The algorithms used to estimate plant growth in greenhouses can also be used to estimate temperatures in cold greenhouses which cause the greenhouse to freeze, the method used is research and development by integrating Artificial Neural Network (ANN) algorithms and Fuzzy Associative Memory (FAM) with the effectiveness of the results reaching 90% accurate [44]. The root mean square error for temperature prediction with a value of 0.2, CO₂ 1.29 and humidity 0.14 [45], using a network of long short term memory and Recurrent NN with a root value mean square error of 0.289 [46]. The estimation of soil moisture content or soil moisture as a planting medium in a greenhouse can also use the ARX, ARMX, BJ and State algorithms with values of 91.31%, 91.09%, 91.08% and 90.75% [47]. The development model of Soil Moisture Forecasting (SMF) to activate Constant Moisture Automatic Irrigation (CAIS) using soil moisture data using sensors on planting media soil with different depths with the estimated error values of 0.011 [48], 0.962 [49], 0.014 [50]. The use of capacitive soil moisture sensors in measuring soil moisture is more resistant to rust than resistive soil moisture [51]. While using a model based on long short term memory, the error value is 0.72% [52] and if using a synthesis algorithm and combining it with a triangular affiliation function 0.99% [53]. By controlling soil moisture in the planting medium in the greenhouse automatically the estimation results of the algorithm used can save both, water irrigation and plant nutrients [54]. To overcome the problems of irrigation control due to the weakness of the internet network, an edge of the network was created. All sensor data is stored in the cloud database if there is a network problem it will affect the resulting decision [55].

The application of fuzzy inference engine determines for control and monitoring of hydroponic plants in greenhouses, the defuzzification obtained from sensor network data was used to control irrigation. Plant growth was monitored as input fuzzy parameters [56]. The application of fuzzy logic [57] and Neural Network [58] in this irrigation control can improve water use efficiency. Sensor networks have also been created in several zoning to facilitate obtaining fuzzy parameter input

data based on crop area [59]. The water needs of the plants are properly fulfilled and the efficiency of water use is obtained.

Generally, the roofing material for greenhouses is Ultra violet (UV) plastic, but the presence of a transparent photovoltaic solar module that is used as a roof as well as a source of energy for the greenhouse is a distinct advantage [60]. Sunlight as a light source for the photosynthesis process of plants in the greenhouse can enter through transparent photovoltaic which is also a source of electrical energy for the greenhouse.

In addition to the sensor network in the greenhouse which is used as data input in controlling the application of intelligent robots based on the Intelligent Mechatronic System, research has also been carried out. This intelligent robot was tasked with monitoring plant growth conditions in the greenhouse, this robot was used as a substitute for officers in the greenhouse and had an operating efficiency of 95.86% [61]. The use of drones in greenhouses can also help manage greenhouses. Simultaneous visual localization and mapping algorithms and ORB-SLAM utilize the camera as a sensor [62].

The publishers who published the most papers with related topics are MDPI as much as 56.9%, IFAC-Paper Online as much and Information Processing Agriculture as much as 10.3% and the remaining less than 5% as shown in Fig. 4, from this information we can obtain information highest probability of publishers publishing related topics. So that the technical paper that will be produced from this SLR is most likely to be published by the publishers who publish the most related topics.

To find out the quality of publishers at the Quartile level, each paper was analyzed through <https://www.scimagojr.com/> by using the ISSN number in each paper as a search keyword. The results of the journal rank analysis can be seen in Fig. 5.

Paper in quartile 1 is 72.4%, quartile 2 is 17.2% and quartile 3 is 10.3%. This shows that the papers on this SLR, which will later become references to technical papers, occupy journal quality in quartiles 1 to 3.

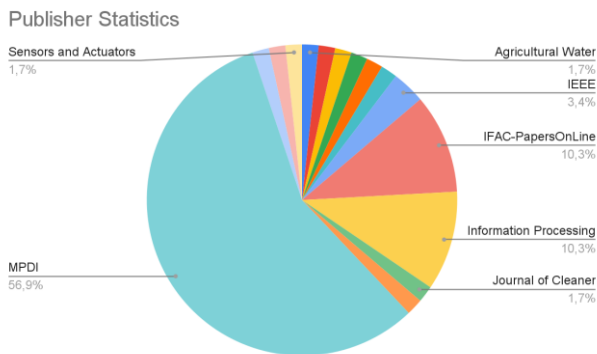


Fig. 4. Publisher statistics.

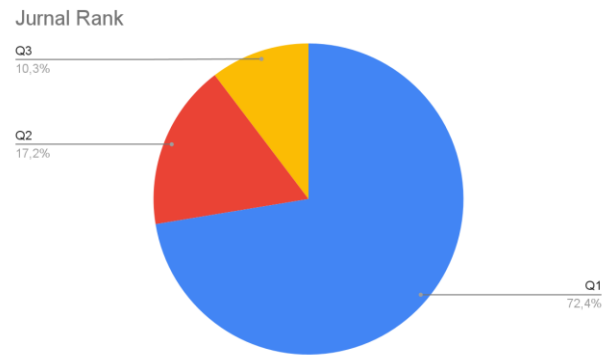


Fig. 5. Rank journal.

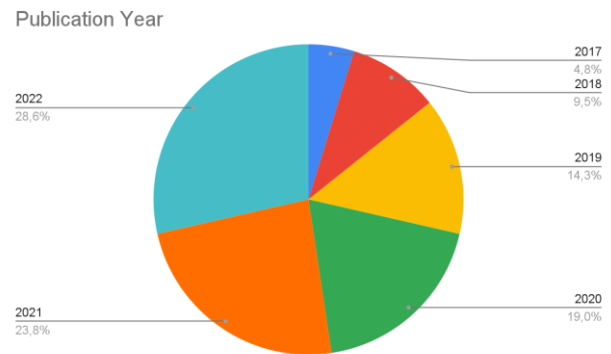


Fig. 6. Publication year.

To find out the research position of related topics, an analysis of the year of publication of each paper, the results are as shown in Fig. 6 above with the number of papers published in 2022 of 28.6% (until August 2022), 23.8% in 2021, 19.0% in 2020, 14.3% in 2019, 9.5% in 2018 and 4.8% in 2017. Judging from the increase in the number of related topics from year to year, it shows that related topics are still good topics for research.

Answering RQ4 to obtain a research gap, one of the analysis carried out was to group paper papers into two groups, namely groups of papers that use datasets and those that do not. The result obtained was 62.1% not using a dataset and 37.9% using a dataset as shown in Fig. 7 using a dataset.

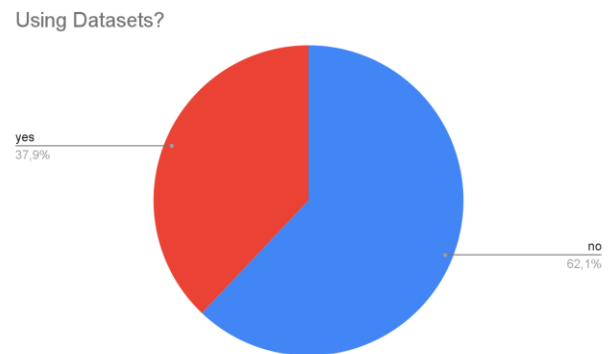


Fig. 7. Dataset.

B. The Possibility of a Research Gap 1

To obtain the possibility of a research gap, a more in-depth analysis was carried out, both on papers that used datasets or not. Papers that used datasets were papers whose research used artificial intelligence such as machine learning using artificial neural network algorithms, decision trees, and so on. The dataset used was a private dataset built by collecting data for some time, then the dataset obtained was used to train the algorithm created. Prediction accuracy and speed as well as memory usage was recorded as a result of the study. To improve the algorithms and datasets that were created, we corresponded to researchers using the correspondence email contained in each paper. We asked for the source code and dataset, then compiled and tested it on another microprocessor, after obtaining the accuracy and predictive speed and using the same memory, we tried to improve and produced a research gap or novelty, and the results were presented in another technical paper. For example, an algorithm used to create a greenhouse temperature model using the Light Gradient Boosting Machine algorithm (LGBM) [63] median error /°C -0.027, mean error/°C -0.058 and Root Mean Square Error /°C 0.645, it is hoped that after improvement the algorithm (call the x algorithm) a smaller predictive error value is obtained as shown in Fig. 8.

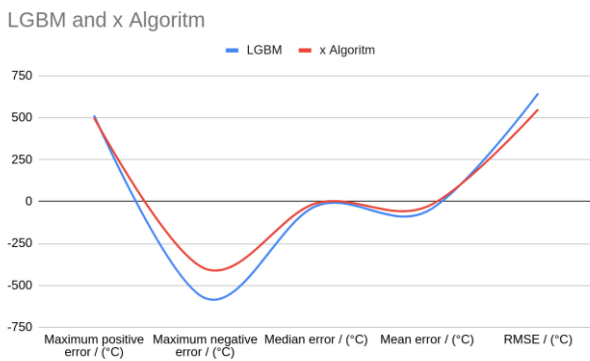


Fig. 8. x algorithm.

Not only did the predictive error value improve, the time training x algorithm also improved as shown in Fig. 9.

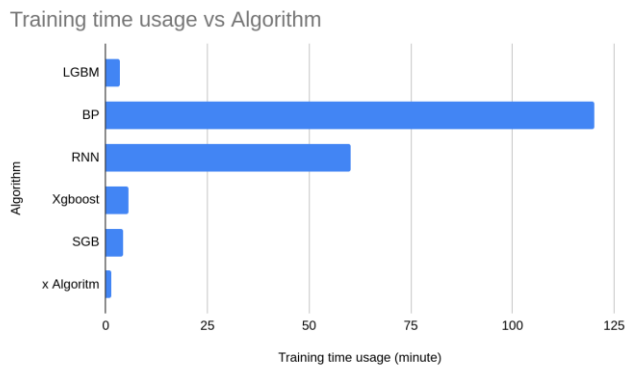


Fig. 9. Time training algorithm.

For papers that did not use datasets in their research, they only built systems for control and monitoring in greenhouses.

In general, the system built in each paper can be seen in Fig. 10 as follows.

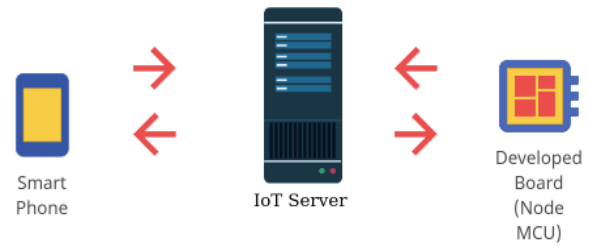


Fig. 10. General IoT system.

The IoTSG system that was created for both control and monitoring was completely on the server or on smart phone mobile apps. The developed board or nodeMCU is only a transmitter and receiver of the sensors and actuators in the greenhouse. The system is very dependent on internet connection, if the internet connection is good then monitoring greenhouse conditions such as temperature, humidity, soil moisture and soil nutrient levels were monitored properly as well as controlling actuators for the process of watering plants and fertilizing can be done properly too. If the internet connection is not good or disconnected, the system will die, monitoring and controlling cannot be done, which can be fatal to plants.

C. The Possibility of a Research Gap 2

To overcome the weaknesses of the IoT system, as stated above, it is necessary to add a developed board that is connected to sensors and actuators in the greenhouse to carry out real time control and monitoring and to compose the IoT system as supporting tools instead of full monitoring and control. In addition, artificial intelligence algorithms can be written on this developed board, for the results of this second novelty will be presented in the next technical paper.

IV. CONCLUSION AND FUTURE WORK

The results of the SLR confirmed that The Internet of Things research on Smart greenhouses was still a trend, as seen from the increasing number of related topics from year to year in quartile 1 to 3 journals. The most widely used sensors were temperature and humidity sensors with research and development methods that were integrated with other algorithms as a decision support system. The decision obtained was used to control the actuators in controlling conditions in the greenhouse such as temperature conditions, air humidity, soil moisture, robot control, nutrient levels of both soil and water planting media.

From the publisher statistics, information was obtained that published the most related topics so that we can choose where to publish the next technical paper; this increased the probability of an accepted paper.

For future work, we will conduct research with topics obtained from two possibilities of a research gap, the first future work: the improving algorithm to obtain better prediction and error values than before. The second future work: the addition of a developed board like developed board

which is connected to sensors and actuators in the greenhouse to carry out real time control and monitoring. The developed board communicates serially with the cloud-connected Nodemcu.

V. DECLARATION AND COMPETING INTEREST

The researchers declare that they have no known competing financial interests or personal relationships that could have appeared to influence the work reported in this paper.

REFERENCES

- [1] U. Zangina, S. Buyamin, M. S. Z. Abidin, and M. S. A. Mahmud, "Agricultural rout planning with variable rate pesticide application in a greenhouse environment," *Alex. Eng. J.*, vol. 60, no. 3, pp. 3007–3020, Jun. 2021, doi: 10.1016/j.aej.2021.01.010.
- [2] K. Liu, C. Zhang, X. Yang, M. Diao, H. Liu, and M. Li, "Development of an Occurrence Prediction Model for Cucumber Downy Mildew in Solar Greenhouses Based on Long Short-Term Memory Neural Network," *Agronomy*, vol. 12, no. 2, p. 442, Feb. 2022, doi: 10.3390/agronomy12020442.
- [3] F. Lin, Y. Weng, H. Chen, and P. Zhuang, "Intelligent greenhouse system based on remote sensing images and machine learning promotes the efficiency of agricultural economic growth," *Environ. Technol. Innov.*, vol. 24, p. 101758, Nov. 2021, doi: 10.1016/j.eti.2021.101758.
- [4] J. Rong, P. Wang, Q. Yang, and F. Huang, "A Field-Tested Harvesting Robot for Oyster Mushroom in Greenhouse," *Agronomy*, vol. 11, no. 6, p. 1210, Jun. 2021, doi: 10.3390/agronomy11061210.
- [5] H. H. Lund, M. Exner, N.E. Jensen, M. Leggieri, M. Outzen, G. Ravnharen, M. von Sechested, A. Vaering, R. Andersen., "GrowBot: An Educational Robotic System for Growing Food," *Appl. Sci.*, vol. 12, no. 11, p. 5539, May 2022, doi: 10.3390/app12115539.
- [6] A. Selmani, H. Oubehar, M. Outanoute, A. Ed-Dahhak, M. Guerbaoui, A. Lachhab, B. Bouchikhi., "Agricultural cyber-physical system enabled for remote management of solar-powered precision irrigation," *Biosyst. Eng.*, vol. 177, pp. 18–30, Jan. 2019, doi: 10.1016/j.biosystemseng.2018.06.007.
- [7] N. Bono Rossello, R. Fabrizio Carpio, A. Gasparri, and E. Garone, "A novel Observer-based Architecture for Water Management in Large-Scale (Hazelnut) Orchards," *IFAC-Pap.*, vol. 52, no. 30, pp. 62–69, 2019, doi: 10.1016/j.ifacol.2019.12.498.
- [8] R. Guirado-Clavijo, J. A. Sanchez-Molina, H. Wang, and F. Bienvenido, "Conceptual Data Model for IoT in a Chain-Integrated Greenhouse Production: Case of the Tomato Production in Almeria (Spain)," *IFAC-Pap.*, vol. 51, no. 17, pp. 102–107, 2018, doi: 10.1016/j.ifacol.2018.08.069.
- [9] Y. Wu, L. Li, M. Li, M. Zhang, H. Sun, N. Sygrimis, W. Lai., "Remote-Control System for Greenhouse Based on Open Source Hardware," *IFAC-Pap.*, vol. 52, no. 30, pp. 178–183, 2019, doi: 10.1016/j.ifacol.2019.12.518.
- [10] D. Cafuta, I. Dodig, I. Cesar, and T. Kramberger, "Developing a Modern Greenhouse Scientific Research Facility—A Case Study," *Sensors*, vol. 21, no. 8, p. 2575, Apr. 2021, doi: 10.3390/s21082575.
- [11] D. Y. Setyawan, D. Yuliawati, W. , and W. Warsono, "Calibration of Geomagnetic and Soil Temperatur Sensor for Earthquake Early Warning System," *TELKOMNIKA Telecommun. Comput. Electron. Control*, vol. 16, no. 5, p. 2239, Oct. 2018, doi: 10.12928/telkomnika.v16i5.7592.
- [12] I. Cisternas, I. Velásquez, A. Caro, and A. Rodríguez, "Systematic literature review of implementations of precision agriculture," *Comput. Electron. Agric.*, vol. 176, p. 105626, Sep. 2020, doi: 10.1016/j.compag.2020.105626.
- [13] J. Kim, D. Minagawa, D. Saito, S. Hoshina, and K. Kanda, "Development of KOSEN Weather Station and Provision of Weather Information to Farmers," *Sensors*, vol. 22, no. 6, p. 2108, Mar. 2022, doi: 10.3390/s22062108.
- [14] J. Wang, J. Zhou, R. Gu, M. Chen, and P. Li, "Manage system for internet of things of greenhouse based on GWT," *Inf. Process. Agric.*, vol. 5, no. 2, pp. 269–278, Jun. 2018, doi: 10.1016/j.inpa.2018.01.002.
- [15] T. P. Kharel, A. J. Ashworth, and P. R. Owens, "Linking and Sharing Technology: Partnerships for Data Innovations for Management of Agricultural Big Data," *Data*, vol. 7, no. 2, p. 12, Jan. 2022, doi: 10.3390/data7020012.
- [16] J. Jamal, S. Azizi, A. Abdollahpouri, N. Ghaderi, B. Sarabi, A. Silva-Ordaz, Victor M. C. Meneses., "Monitoring rocket (*Eruca sativa*) growth parameters using the Internet of Things under supplemental LEDs lighting," *Sens. Bio-Sens. Res.*, vol. 34, p. 100450, Dec. 2021, doi: 10.1016/j.sbsr.2021.100450.
- [17] V. Lysenko, Y. Guo, A. Kosolapov, E. Usova, T. Varduny, and V. Krasnov, "Polychromatic Fourier-PAM fluorometry and hyperspectral analysis of chlorophyll fluorescence from *Phaseolus vulgaris* leaves: Effects of green light," *Inf. Process. Agric.*, vol. 7, no. 2, pp. 204–211, Jun. 2020, doi: 10.1016/j.inpa.2019.09.009.
- [18] S. Santiteerakul, A. Sopadang, K. Yaibuathet Tippayawong, and K. Tamvimol, "The Role of Smart Technology in Sustainable Agriculture: A Case Study of Wangree Plant Factory," *Sustainability*, vol. 12, no. 11, p. 4640, Jun. 2020, doi: 10.3390/su12114640.
- [19] M. Muñoz, J. L. Guzmán, J. A. Sánchez, F. Rodríguez, and M. Torres, "Greenhouse Models as a Service (GMaaS) for Simulation and Control," *IFAC-Pap.*, vol. 52, no. 30, pp. 190–195, 2019, doi: 10.1016/j.ifacol.2019.12.520.
- [20] G.-A. Musat, M. Colezea, F. Pop, C. Negru, M. Mocanu, C. Esposito, A. Castiglione., "Advanced services for efficient management of smart farms," *J. Parallel Distrib. Comput.*, vol. 116, pp. 3–17, Jun. 2018, doi: 10.1016/j.jpdc.2017.10.017.
- [21] W. Yong, L. Shuaishuai, L. Li, L. Minzan, L. Ming, K.G. Arvanitis, Cs. Georgieva, N. Sigrimis., "Smart Sensors from Ground to Cloud and Web Intelligence," *IFAC-Pap.*, vol. 51, no. 17, pp. 31–38, 2018, doi: 10.1016/j.ifacol.2018.08.057.
- [22] M. Munoz, J. L. Guzman, J. A. Sanchez-Molina, F. Rodriguez, M. Torres, and M. Berenguel, "A New IoT-Based Platform for Greenhouse Crop Production," *IEEE Internet Things J.*, vol. 9, no. 9, pp. 6325–6334, May 2022, doi: 10.1109/JIOT.2020.2996081.
- [23] H. A. Méndez-Guzmán, J. A. Padilla-Medina, C. Martínez-Nolasco, J. J. Martínez-Nolasco, A. I. Barranco-Gutiérrez, L. M. Contreras-Medina, M. Leon-Rodríguez., "IoT-Based Monitoring System Applied to Aeroponics Greenhouse," *Sensors*, vol. 22, no. 15, p. 5646, Jul. 2022, doi: 10.3390/s22155646.
- [24] S. Zhang, Y. Guo, S. Li, Z. Ke, H. Zhao, J. Yang, Y. Wang, D. Li, L. Wang, W. Yang, Z. Zhang., "Investigation on environment monitoring system for a combination of hydroponics and aquaculture in greenhouse," *Inf. Process. Agric.*, vol. 9, no. 1, pp. 123–134, Mar. 2022, doi: 10.1016/j.inpa.2021.06.006.
- [25] P. Placidi, R. Morbidelli, D. Fortunati, N. Papini, F. Gobbi, and A. Scorzoni, "Monitoring Soil and Ambient Parameters in the IoT Precision Agriculture Scenario: An Original Modeling Approach Dedicated to Low-Cost Soil Water Content Sensors," *Sensors*, vol. 21, no. 15, p. 5110, Jul. 2021, doi: 10.3390/s21155110.
- [26] R. Singh, M. Aernouts, M. De Meyer, M. Weyn, and R. Berkvens, "Leveraging LoRaWAN Technology for Precision Agriculture in Greenhouses," *Sensors*, vol. 20, no. 7, p. 1827, Mar. 2020, doi: 10.3390/s20071827.
- [27] A. Pena, J. C. Tejada, J. D. Gonzalez-Ruiz, and M. Gongora, "Deep Learning to Improve the Sustainability of Agricultural Crops Affected by Phytosanitary Events: A Financial-Risk Approach," *Sustainability*, vol. 14, no. 11, p. 6668, May 2022, doi: 10.3390/su14116668.
- [28] S. Venkatesan, J. Lim, H. Ko, and Y. Cho, "A Machine Learning Based Model for Energy Usage Peak Prediction in Smart Farms," *Electronics*, vol. 11, no. 2, p. 218, Jan. 2022, doi: 10.3390/electronics11020218.
- [29] I.-S. Choi, A. Hussain, V.-H. Bui, and H.-M. Kim, "A Multi-Agent System-Based Approach for Optimal Operation of Building Microgrids with Rooftop Greenhouse," *Energies*, vol. 11, no. 7, p. 1876, Jul. 2018, doi: 10.3390/en11071876.
- [30] S. Afzali, S. Moshafarian, M. W. van Iersel, and J. Mohammadpour Velni, "Development and Implementation of an IoT-Enabled Optimal and Predictive Lighting Control Strategy in Greenhouses," *Plants*, vol. 10, no. 12, p. 2652, Dec. 2021, doi: 10.3390/plants10122652.

- [31] J.-W. Lee, T. Moon, and J.-E. Son, "Development of Growth Estimation Algorithms for Hydroponic Bell Peppers Using Recurrent Neural Networks," *Horticulturae*, vol. 7, no. 9, p. 284, Sep. 2021, doi: 10.3390/horticulturae7090284.
- [32] M. Erazo-Rodas, M. Sandoval-Moreno, S. Muñoz-Romero, M. Huerta, D. Rivas-Lalaleo, and J. Rojo-Álvarez, "Multiparametric Monitoring in Equatorial Tomato Greenhouses (III): Environmental Measurement Dynamics," *Sensors*, vol. 18, no. 8, p. 2557, Aug. 2018, doi: 10.3390/s18082557.
- [33] A. Rennane, F. Benmahmoud, A. Tayeb Cherif, R. Touhami, and S. Tedjini, "Design of autonomous multi-sensing passive UHF RFID tag for greenhouse monitoring," *Sens. Actuators Phys.*, vol. 331, p. 112922, Nov. 2021, doi: 10.1016/j.sna.2021.112922.
- [34] D. Cama-Pinto, J. A. Holgado-Terriza, M. Damas-Hermoso, F. Gómez-Mula, and A. Cama-Pinto, "Radio Wave Attenuation Measurement System Based on RSSI for Precision Agriculture: Application to Tomato Greenhouses," *Inventions*, vol. 6, no. 4, p. 66, Oct. 2021, doi: 10.3390/inventions6040066.
- [35] J. Wang, M. Chen, J. Zhou, and P. Li, "Data communication mechanism for greenhouse environment monitoring and control: An agent-based IoT system," *Inf. Process. Agric.*, vol. 7, no. 3, pp. 444–455, Sep. 2020, doi: 10.1016/j.inpa.2019.11.002.
- [36] V. Thomopoulos, D. Bitas, K.-N. Papastavros, D. Tsipianitis, and A. Kavga, "Development of an Integrated IoT-Based Greenhouse Control Three-Device Robotic System," *Agronomy*, vol. 11, no. 2, p. 405, Feb. 2021, doi: 10.3390/agronomy11020405.
- [37] U. Lee, M. P. Islam, N. Kochi, K. Tokuda, Y. Nakano, H. Naito, Y. Kawasaki, T. Ota, T. Sugiyama, D.H. Ahn., "An Automated, Clip-Type, Small Internet of Things Camera-Based Tomato Flower and Fruit Monitoring and Harvest Prediction System," *Sensors*, vol. 22, no. 7, p. 2456, Mar. 2022, doi: 10.3390/s22072456.
- [38] G. A. Pauzi, A. Supriyanto, B. L. Putra, and S. Suciayati, "ANALYSIS AND REDUCTION OF TIME SHIFT BETWEEN SENDING AND RECEIVING ON DATA ACQUISITION USING SMS GATEWAY SYSTEM," *. Vol.*, no. 20, p. 8, 2005
- [39] Warsito, G. A. Pauzi, S. W. Suciayati, and Turyani, "Design and characterization of water level detector using MW22B Multi-Turn potentiometer," Bandung, Indonesia, 2012, pp. 174–177. doi: 10.1063/1.4730714.
- [40] G. A. Pauzi, S. W. Suciayati, and K. Imaniar, "STUDY OF INCLINATION ANGLE OF REFLECTOR OBJECT IN SIMPLE WATER LEVEL INSTRUMENT USING 40 KHz ULTRASONIC TRANSDUCER," *. Vol.*, vol. 42, p. 5, 2005.
- [41] Y. Mu, T.-S. Chen, S. Ninomiya, and W. Guo, "Intact Detection of Highly Occluded Immature Tomatoes on Plants Using Deep Learning Techniques," *Sensors*, vol. 20, no. 10, p. 2984, May 2020, doi: 10.3390/s20102984.
- [42] Y.-Y. Zheng, J.-L. Kong, X.-B. Jin, X.-Y. Wang, and M. Zuo, "CropDeep: The Crop Vision Dataset for Deep-Learning-Based Classification and Detection in Precision Agriculture," *Sensors*, vol. 19, no. 5, p. 1058, Mar. 2019, doi: 10.3390/s19051058.
- [43] F. García-Mañas, F. Rodríguez, and M. Berenguel, "Leaf area index soft sensor for tomato crops in greenhouses," *IFAC-Pap.*, vol. 53, no. 2, pp. 15796–15803, 2020, doi: 10.1016/j.ifacol.2020.12.230.
- [44] A. Castañeda-Miranda and V. M. Castaño-Meneses, "Smart frost measurement for anti-disaster intelligent control in greenhouses via embedding IoT and hybrid AI methods," *Measurement*, vol. 164, p. 108043, Nov. 2020, doi: 10.1016/j.measurement.2020.108043.
- [45] I. Ullah, M. Fayaz, N. Naveed, and D. Kim, "ANN Based Learning to Kalman Filter Algorithm for Indoor Environment Prediction in Smart Greenhouse," *IEEE Access*, vol. 8, pp. 159371–159388, 2020, doi: 10.1109/ACCESS.2020.3016277.
- [46] G. Codeluppi, L. Davoli, and G. Ferrari, "Forecasting Air Temperature on Edge Devices with Embedded AI," *Sensors*, vol. 21, no. 12, p. 3973, Jun. 2021, doi: 10.3390/s21123973.
- [47] E. A. Abioye, M. S. Z. Abidin, M. S. A. Mahmud, S. Buyamin, M. K. I. AbdRahman, A. O. Otuoze, M. S. A. Ramli, O. D. Ijike., "IoT-based monitoring and data-driven modelling of drip irrigation system for mustard leaf cultivation experiment," *Inf. Process. Agric.*, vol. 8, no. 2, pp. 270–283, Jun. 2021, doi: 10.1016/j.inpa.2020.05.004.
- [48] S.-C. Huang and Y.-Z. Lin, "A Low-Cost Constant-Moisture Automatic Irrigation System Using Dynamic Irrigation Interval Adjustment," *Appl. Sci.*, vol. 10, no. 18, p. 6352, Sep. 2020, doi: 10.3390/app10186352.
- [49] Y. Y. Hilal, M. K. Khessro, J. van Dam, and K. Mahdi, "Automatic Water Control System and Environment Sensors in a Greenhouse," *Water*, vol. 14, no. 7, p. 1166, Apr. 2022, doi: 10.3390/w14071166.
- [50] A. M. Okasha, H. G. Ibrahim, A. H. Elmetwalli, K. M. Khedher, Z. M. Yaseen, and S. Elsayed, "Designing Low-Cost Capacitive-Based Soil Moisture Sensor and Smart Monitoring Unit Operated by Solar Cells for Greenhouse Irrigation Management," *Sensors*, vol. 21, no. 16, p. 5387, Aug. 2021, doi: 10.3390/s21165387.
- [51] P. Placidi, L. Gasperini, A. Grassi, M. Cecconi, and A. Scorzoni, "Characterization of Low-Cost Capacitive Soil Moisture Sensors for IoT Networks," *Sensors*, vol. 20, no. 12, p. 3585, Jun. 2020, doi: 10.3390/s20123585.
- [52] P. Suebsombut, A. Sekhari, P. Sureephong, A. Belhi, and A. Bouras, "Field Data Forecasting Using LSTM and Bi-LSTM Approaches," *Appl. Sci.*, vol. 11, no. 24, p. 11820, Dec. 2021, doi: 10.3390/app112411820.
- [53] S. An.F. Yang, Y. Yang, Y. Huang, L. Zhangzhong, X. Wei, J. Yu., "Water Demand Pattern and Irrigation Decision-Making Support Model for Drip-Irrigated Tomato Crop in a Solar Greenhouse," *Agronomy*, vol. 12, no. 7, p. 1668, Jul. 2022, doi: 10.3390/agronomy12071668.
- [54] D. Massa, J. J. Magán, F. F. Montesano, and N. Tzortzakakis, "Minimizing water and nutrient losses from soilless cropping in southern Europe," *Agric. Water Manag.*, vol. 241, p. 106395, Nov. 2020, doi: 10.1016/j.agwat.2020.106395.
- [55] C. M. Angelopoulos, G. Filios, S. Nikolettseas, and T. P. Raptis, "Keeping data at the edge of smart irrigation networks: A case study in strawberry greenhouses," *Comput. Netw.*, vol. 167, p. 107039, Feb. 2020, doi: 10.1016/j.comnet.2019.107039.
- [56] K. Tatas, A. Al-Zoubi, N. Christofides, C. Zannettis, M. Chrysostomou, S. Panteli, A. Antoniou., "Reliable IoT-Based Monitoring and Control of Hydroponic Systems," *Technologies*, vol. 10, no. 1, p. 26, Feb. 2022, doi: 0.3390/technologies10010026.
- [57] R. Urbietta Parrazales, M. T. Zagaceta Álvarez, K. A. Aguilar Cruz, R. Palma Orozco, and J. L. Fernández Muñoz, "Implementation of a Fuzzy Logic Controller for the Irrigation of Rose Cultivation in Mexico," *Agriculture*, vol. 11, no. 7, p. 576, Jun. 2021, doi: 10.3390/agriculture11070576.
- [58] N. K. Nawandar and V. R. Satpute, "IoT based low cost and intelligent module for smart irrigation system," *Comput. Electron. Agric.*, vol. 162, pp. 979–990, Jul. 2019, doi: 10.1016/j.compag.2019.05.027.
- [59] H. Benyezza, M. Bouhedda, and S. Rebouh, "Zoning irrigation smart system based on fuzzy control technology and IoT for water and energy saving," *J. Clean. Prod.*, vol. 302, p. 127001, Jun. 2021, doi: 10.1016/j.jclepro.2021.127001.
- [60] J. M. Pearce, "Parametric Open Source Cold-Frame Agrivoltaic Systems," p. 20, 2021.
- [61] T. Zhang, W. Zhou, F. Meng, and Z. Li, "Efficiency Analysis and Improvement of an Intelligent Transportation System for the Application in Greenhouse," *Electronics*, vol. 8, no. 9, p. 946, Aug. 2019, doi: 10.3390/electronics8090946.
- [62] S. Krul, C. Pantos, M. Frangulea, and J. Valente, "Visual SLAM for Indoor Livestock and Farming Using a Small Drone with a Monocular Camera: A Feasibility Study," *Drones*, vol. 5, no. 2, p. 41, May 2021, doi: 10.3390/drones5020041.
- [63] W. Cai, R. Wei, L. Xu, and X. Ding, "A method for modelling greenhouse temperature using gradient boost decision tree," *Inf. Process. Agric.*, vol. 9, no. 3, pp. 343–354, Sep. 2022, doi: 10.1016/j.inpa.2021.08.004.