

PAPER NAME

**18. JDMLM. 8.4. Juli 2021 (Scopus (Q4)-
5-12.pdf**

AUTHOR

Qadar

WORD COUNT

5555 Words

CHARACTER COUNT

28037 Characters

PAGE COUNT

8 Pages

FILE SIZE

284.6KB

SUBMISSION DATE

Nov 23, 2022 9:58 AM GMT+7

REPORT DATE

Nov 23, 2022 9:58 AM GMT+7

● 13% Overall Similarity

The combined total of all matches, including overlapping sources, for each database.

- 8% Internet database
- 7% Publications database
- Crossref database
- Crossref Posted Content database
- 9% Submitted Works database

● Excluded from Similarity Report

- Bibliographic material
- Quoted material
- Manually excluded sources
- Manually excluded text blocks

Research Article

Assessment of water quality of the ex-sand mining sites in Pasir Sakti Sub-District, East Lampung for tilapia (*Oreochromis niloticus*) culture

Qadar Hasani^{1*}, Niken Tunjung Murti Pratiwi², Yusli Wardiatno^{2,3}, Hefni Effendi^{2,3}, Herman Yulianto¹, Maulid Wahid Yusuf¹, Rachmad Caesario¹, Farlina⁴

¹ Department of Aquatic Resources, Faculty of Agriculture, Lampung University, Bandar Lampung, Indonesia

² Department of Aquatic Resources Management, Faculty of Fisheries and Marine Sciences, IPB University, Bogor, West Java, Indonesia

³ Center for Environmental Research, Institute for Research and Community Development, IPB University, Bogor, West Java, Indonesia

⁴ Integrated Laboratory and Center for Technological Innovation, Lampung University, Bandar Lampung, Indonesia

*corresponding author: masqod@fp.unila.ac.id

Abstract

Article history:

Received 4 June 2021

Accepted 30 June 2021

Published 1 July 2021

Keywords:

aquaculture
marginally suitable
matching and scoring
measurements

and mining activities in Pasir Sakti Sub-District, East Lampung Regency, have changed the landscape and the allotment of land around it. The former sand mining area now becomes large puddles that are not utilized. This study aimed to analyze the suitability of water quality in ex-sand mining areas for tilapia (*Oreochromis niloticus*) culture. Observations were carried out at three stations in January-October 2019. Water quality measurements were performed to check water depth, clarity, temperature, current, dissolved oxygen, pH, salinity, nitrate, phosphate, iron, sulfate, and phytoplankton density. Analysis of suitability for aquaculture was carried out using weighting and scoring methods. Based on the results of the suitability analysis, the scoring result of the sand mining land for *O. niloticus* culture was in the range of 64% -68%. This score is classified as marginally suitable. The parameters with low scores are clarity, dissolved oxygen, temperature, pH, ammonia, phosphate, and iron (Fe) concentration. Meanwhile, salinity, nitrate, sulfate, and phytoplankton density indicate conditions that are suitable for aquaculture. Therefore, severe treatment is needed to improve water quality to make it ideal for *O. niloticus* culture.

To cite this article: Hasani, Q., Pratiwi, N.T.M., Wardiatno, Y., Effendi, H., Yulianto, H., Yusuf, M.W., Caesario, R. and Farlina. 2021. Assessment of water quality of the ex-sand mining sites in Pasir Sakti Sub-District, East Lampung for tilapia (*Oreochromis niloticus*) culture. Journal of Degraded and Mining Lands Management 8(4): 3007-3014, doi: 10.15243/jdmlm.2021.084.3007.

Introduction

Mining activities may frequently cause environmental problems, namely ecological damage due to negative impacts in the form of the amount of land damaged after mining activities are carried out (Sari and Buchori, 2015; Rizqan et al., 2016; Gavriletea, 2017). One of the areas that have an enormous sand mining potential is Pasir Sakti Sub-District, East Lampung Regency, Lampung Province. According to Supardan et al. (2006), sand is considered a treasure that is stored in the land of Pasir Sakti Sub-District. The sand mining

activities that began in 2004 has provided economic benefits for residents (Firdaus, 2012). They got the income from sand excavation activities, sand trading, and selling their gardens and lands to traders or sand mining companies. But over time, sand mining activities are now causing problems for the residents. According to the Department of Marine Affairs and Fisheries of East Lampung Regency, the area of ex-sand mining in Pasir Sakti Sub-District reached 8,000 ha. According to PT. Jaya Pacific Propertindo, the potential of sand in the Rawa Sragi area (Pasir Sakti Sub-District and surrounding areas) reaches 30,000 ha,

with sand deposits reaching 1.2 billion m³. Based on measurements using the Google Earth feature, the total area of the lake from ex-sand mining area is estimated at 1,200 ha.

The waters in the ex-sand mining area in the Pasir Sakti Sub-District is currently in the form of lake/puddles and unutilized (Hasani et al., 2021a; Hasani et al., 2021b). However, based on the Decree of The Minister of Maritime and Fisheries Affairs of the Republic of Indonesia, Pasir Sakti Sub-District is an aquaculture area in Lampung Province. This sub-district is known as one of the fishery commodities producers in Lampung Province. Therefore, it would be a huge benefit if the unutilized waters from ex-sand mining areas can be used for aquaculture activities.

The ex-sand mining land with specific characteristics is the potential for aquaculture (Octorina et al., 2013; Octorina et al., 2017). However, water quality in this area is not optimum (Octorina et al., 2017; Hasani et al., 2021), acidic (Firdaus, 2012), and high heavy metal content (Darmayanti et al., 2000; Kurniawan, 2018) requires special treatments to be utilized for aquaculture. The purpose of this study was

to scientifically analyze the suitability of the ex-sand mining waters in Pasir Sakti Sub-District for tilapia (*O. niloticus*) culture.

Materials and Methods

Study sites

Water quality observations were conducted from January to December 2019. Water samples were taken from three stations (nine points) which considered to represent the characteristics of the location of the sand mine area. Coordinates of stations were recorded by using the *Global Positioning System* (GPS). Station 1 is located in the north (Mulyosari Village) at 5°30'26"S and 105°46'25"E, which is a relatively narrow and fairly old sand excavation area. Station 2 is located in the middle (Rejomulyo Village) at 5°31'30"S 105°46'17"E. Station 3 in the south (Boundary of Rejomulyo village and Kedung Ringin Village) with coordinates of 5°33'06"S and 105 ° 46'29"E. These stations are the most extensive ex-mining location (Figure 1).

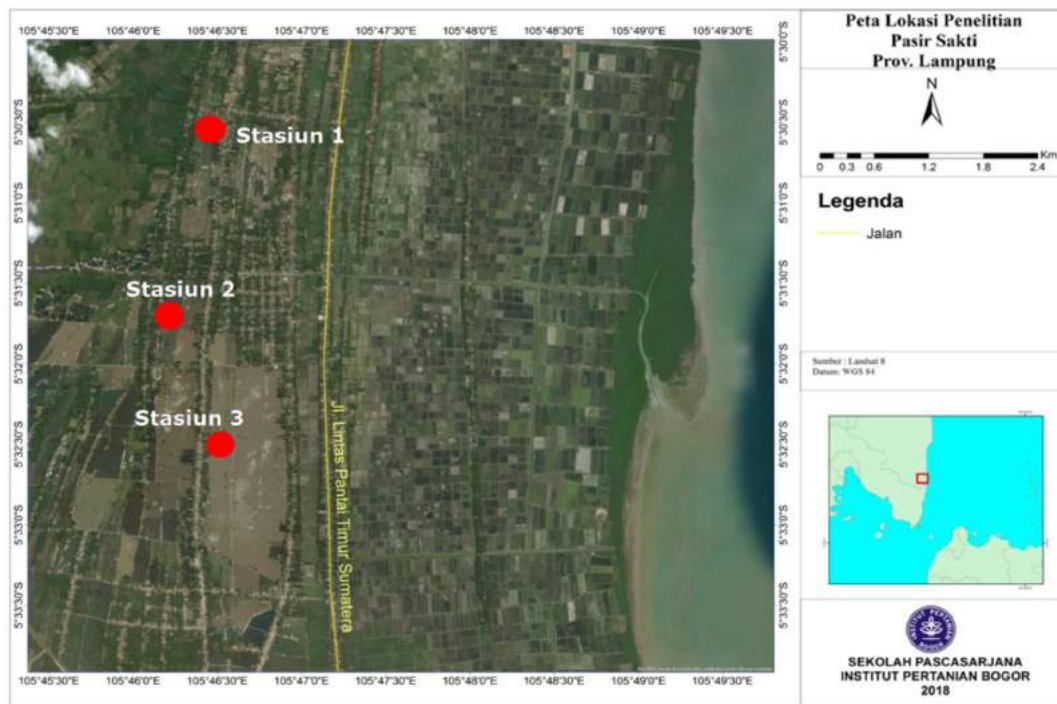


Figure 1. Map of the observation station: Station I (Mulyosari Village), Station 2 (Rejomulyo Village) and Station 3 (the boundary of Rejomulyo Village and Kedung Ringin Village).

Water quality measurement

Physico-chemical parameters of the waters were measured in-situ, together with water and phytoplankton sampling. Water quality data that cannot be measured in-situ was tested in a laboratory. Samples were taken using a Van Dorn water sampler. The parameters observed were temperature, clarity,

depth, current, pH, salinity, dissolved oxygen, phosphate, nitrate, sulfate, Fe, and phytoplankton diversity. Water samples were analyzed at the Integrated Laboratory and Technology Innovation Center of the University of Lampung, regarding APHA (2012). Fe concentration was measured refers to the EPA 2007 (5th Revision) method (APHA 2012), using Inductively Coupled Plasma-Atomic Emission

Spectrometry (ICP-AES). Meanwhile, sulfate (SO_4^{2-}), ammonia (NH_3), nitrite ($\text{NO}_2\text{-N}$), nitrate ($\text{NO}_3\text{-N}$), and phosphate (PO_4) were measured by using the spectrophotometry method with ascorbic acid (APHA, 2012). Phytoplankton samples were taken using plankton net number 20 from the bottom of the water to the surface (Hasani et al., 2012; Muhtadi et al., 2020). Phytoplankton samples were immediately given a Lugol's iodine solution 3% (3 mL per 100 mL sample) (Bellinger and Siege, 2010) and then stored in a coolbox with a temperature of $\pm 4^\circ$. Phytoplankton identification was performed by using a microscope with a magnification of 100 times. The obtained plankton was identified using the identification books of Yamaji (1976), Tomas (1997), Bellinger and Siegee (2010). Phytoplankton calculations were performed by using the Sedgwick-rafter counting chamber. The density of phytoplankton per liter was calculated using

the formulation of APHA (2012); Hasani et al. (2012); Muhtadi et al. (2020)

Waters suitability analysis for fish culture

Water suitability analysis for *O. niloticus* culture was carried out with a land/water suitability matrix using weighting and scoring methods (modification of Ministry of Maritime and Fisheries Affairs of the Republic of Indonesia, 2011; Yulainto et al., 2017; Anggraini et al., 2018), through the following stages:

1. Suitability Score (A), as shown in the third column of the matrix. This scoring used weighting for each water quality parameter. The aim is to differentiate the score of suitability level by using the scoring method. Suitability scores are defined as follows: Very Suitable with a score of 5; Fairly Sufficient with a score of 3, and not suitable with a score of 1 (Table 1).

Table 1. The matrix of water quality parameters assessment for tilapia (*O. niloticus*) culture suitability.

Parameters	Range	Score (A)	Weight % (B)	(A x B)	Reference
Clarity (m)	> 5	5	5	25	Beveridge (1991); Hastari et al. (2017)
	>3 – 4.9	3			
	< 2.9	1			
Dissolved Oxygen (mg/L)	4-7	5	10	50	Boyd, (1990); Kordi and Tancung (2010); Lucas et al. (2018)
	3-4 dan 7.5-8	3			
	<3 dan >9	1			
Salinity (‰)	< 0.5	5	5	25	Boyd (1990); Kordi and Tancung (2010)
	1-5	3			
	>5	1			
Temperature °C	28 -32	5	5	25	El-Sayed and Kawanna (2008); Kordi and Tancung (2010); Hidayati et al. (2019)
	20-27 and 32.5-33	3			
	<20 and >33	1			
pH	6.5-8.5	5	10	50	El-Sherif and El-Feky (2009); Kurinawan (2012); Lucas et al. (2018)
	5-6.4 and 8.6-9	3			
	<5 and >9	1			
Nitrate (mg/L)	0,9	5	10	50	El-Sayed, (2006); Setiadi et al. (2018).
	1.0 – 2.0	3			
	>2.0	1			
Ammonia (mg/L)	<0.1	5	10	50	Popma and Lovshin (1996); El-Sayeed (2006); Hastari et al. (2017)
	0.1 – 0.2	3			
	>0,2	1			
Phosphate (mg/L)	> 0.2 – 0.5	5	10	50	Hastari et al. (2017)
	0.1-0.19 dan 0.51-0.6	3			
	<0.2 dan >0.6	1			
Fe (mg/L)	< 0.4	5	15	75	CCREM (1987) in Effendi (2003); EPA (2002)
	0.5 – 10	3			
	> 10	1			
SO ₄ (mg/L)	< 80	5	15	75	Kutty (1987); Menezes et al. (2017)
	80 – 400	3			
	> 400	1			
Phytoplankton (cells/L)	> (1.5 x 10 ⁴) and < (5 x 10 ⁵)	5	5	25	Yulianto et al. (2017)
	(2 x 10 ³) – (1.5 x 10 ⁴) and (5 x 10 ⁵ – 10 ⁶)	3			
	(2 x 10 ³) and > (1 x10 ⁸)	1			
Total		5	100	500	

Notes: modification from the Ministry of Maritime Affairs and Fisheries of Indonesia (2011); Radiarta et al. (2004); Pramono et al. (2005); Hastari et al. (2017). Note: Scores (5: good; 3: moderate; 1: less). The score is $\sum (n; i = 1) = A \times B$.

2. The weight of the parameter (B), was presented in the fourth column of the matrix; each water quality parameter was provided with a different weight due to different role in supporting the life of aquaculture biota. Water quality parameters with a significant role will get a higher value than parameters with lower impact.
3. Score (AxB) was calculated by multiplying score (A) with a weight (B) for first parameters to n-parameters,
4. Furthermore, the total score from each parameter was used to determine the suitability level of land aquaculture based on water quality characteristics (Ministry of Maritime and Fisheries Affairs of the Republic of Indonesia, 2011); Muhaemi et al. (2015); Hastari et al. (2017); Yulianto et al. (2017):

$$\text{Suitability Score} = \frac{\text{Score}}{\text{Maximum Total Score}} \times 100 \%$$

Based on the suitability score, the level of assessment is classified into several classes, as follows:

- S1: highly suitable with a score of 85-100%. This indicates that the water does not have a limiting factor for fish culture activities,
- S2: moderately suitable (score of 75-84%). There are only minor limiting factors for users and they only need a little treatment.
- S3: marginally suitable (score of 65-74%). This score means that the water has serious limiting factors for aquaculture activities. Therefore, serious treatments are needed to improve water quality for aquaculture activities.

- Class N: not suitable with value/score <65%. This means that the water cannot be used for aquaculture activities due to the permanent barrier or limiting factor.

Results and Discussion

Ex-sand mining activities in Pasir Sakti Sub-District, East Lampung Regency, from 2004-2017, have changed the shape of the landscape in that area (Figure 2). These activities have left the land in the form of lakes/puddles with the size of thousands of hectares. Based on measurements using Google Earth, the ex-sand mining area stretches for approximately 10 km (North to South) and width between 0.5-1.5 km (East to West). The utilization of this area has its own challenges because the water in this area tends to have specific water and soil quality.

Waters quality

The ex-sand mining area in Pasir Sakti Sub-District is now abandoned in the form of huge lakes/puddles, with a depth of approximately 1.4-5.25 m. In general, there are several parameters that are still within the quality standards for the *O. niloticus* culture using floating fish cages. Water temperature in the waters of the ex-sand mining area ranged from 29.3-36.5°C with an average of 32.13° C on Station 1, and 32.34° C on station 2 and 32.61° C on station 3. These conditions have exceeded the quality standard for aquaculture activities. According to Kordi and Tancung (2010), the optimum temperature range for fish in tropical waters is between 28-32°C.



Figure 2. Ex-sand mining area in Pasir Sakti Sub-District, East Lampung which has not been utilized for aquaculture activities.

22 While the optimum temperature for *O. niloticus* ranged from 24 to 32°C (El-Sayed and Kawana, 2008). Generally, in addition to high average temperatures of water, temperatures at the study site also showed significant range variations. These conditions occurred because the area is located in a coastal area with low altitude and sandy soil. According to Effendi (2003), the temperature is strongly influenced by seasonal, altitude, land elevation of sea levels. The result showed that the water clarity level in the three stations is not suitable for *O. niloticus* culture. Water clarity level in the ex-sand mining area shows a range of 65.0-140.0 cm with an average of 93.23 cm on Station 1, 22.0-98.40 cm with an average of 69.10 cm on Station 2 and 48.50-115.00 with an average of 90.09 cm on Station 3. This condition is not suitable to support aquaculture activities, especially in floating fish cages. Based on the water suitability value for aquaculture activities, water clarity level <2.9 m is classified as not good for aquaculture; water clarity level of > 3–4.9 m is classified as quite good, while water clarity level > 5 m is classified as very good (Hastari et al., 2017). The low clarity level is presumably caused by high suspension particles and dissolved particles in the form of small grains of sand. This caused the water becomes coloured and turbid. The low clarity level will affect the survival of phytoplankton, the photosynthesis process and the fish sight (Hasani et al., 2012). The depth of the water in the ex-sand mining area ranged from 1.40-5.25 m with an average depth of 3.271 m. This condition indicates that the depth of the lake/puddles at ex-sand mining area is too shallow for aquaculture activities (Kordi and Tancung, 2010; Hastari et al., 2017; Anggraini et al., 2018). Water

depth is closely related to the location of the floating fish cage. The floating fish cage should not be deployed in waters that are too shallow or too deep. Waters that are too shallow will be vulnerable to the accumulation of waste from the leftover feed and fish metabolism (Kordi and Tancung, 2010). Meanwhile, waters that are too deep (> 40 m) will cause trouble in the deployment of floating fish cages that will require a significant cost (Hastari et al., 2017).

The result showed that the water current in ex-sand mining waters area ranged from 1.19 to 60.0 cm/s (average 22.78 cm/s). The current in this area is categorized as low. However, water currents play an important role in water circulation the distribution of dissolved solid and oxygen. According to Affan (2012), currents play an important role in water circulation; in addition to carriers of dissolved and suspended solids, currents also affect the amount of oxygen solubility in water. Current strength can reduce fouling organisms in floating fish nets. Dissolved oxygen (Table 2) in ex-sand mining waters were ranged from 4.11-8.8 mg/L with an average of 6.98 mg/L (Station 1), 6.59 mg/L (Station 2), and 6.98 mg/L (Station 3).

According to water quality standards of the Government Regulation of the Republic of Indonesia No. 82 the year 2001 (class II), the range of dissolved oxygen for fish culture activities is > 4 mg/L (Tatangindatu et al., 2013). Thus, the concentration of dissolved oxygen in the water in the ex-sand mining area of Pasir Sakti Sub-District is classified as excellent or suitable for aquaculture activities in floating fish cages. Salinity also showed a proper range for aquaculture activities with the value of 0.00 ‰.

Table 2. Water quality parameters of ex-sand mining area in each station.

No	Parameters	ST 1 (Mulyosari)		ST 2 (Rejomulyo)		ST3 (Rejomulyo-Kd. Ringin)	
		Range	Averages	Range	Averages	Range	Averages
1	Temperature (°C)	29.3-35.4	32.13	30.1-36.5	32.34	31.6 - 35	32.61
2	Depth (cm)	140.0-525.0	327.06	135.0-320.0	211.56	230.0-354.0	295.56
3	Clarity(cm)	65.0-140.0	93.23	22.0-98.40	69.10	48.50-115.00	90.09
4	Current (sm/s)	1.19-60.0	22.78	2.12-60.50	18.87	5.15-71.70	29.26
5	Odor	No	No	No	No	No	No
6	TSS (mg/L)	5.33-33.33	17.904	6.27-54.57	21.728	4.00-46.67	21.932
7	TDS (mg/L)	50.33-110.00	75.310	50.00-990.67	277.165	50.30-130.00	100.498
8	pH	3.4-7.4	6.10	5.7-7.6	6.64	6.6-7.525	7.03
9	Salinity (‰)	0.00	0.00	0.00	0.00	0.00	0.00
10	Dissolves Oxygen (mg/L)	4.35-8.5	6.98	4.11-8.8	6.59	4.27-8.5	6.98
11	PO ₄ -P(mg/L)	0.001-0.077	0.0247	0.002-0.111	0.046	0.002-0.082	0.026
12	NO ₃ -N (mg/L)	0.316-2.697	1.282	0.277-3.484	1.724	0.244-2.932	1.350
13	NH ₃ -N (mg/L)	0.074-2.479	0.770	0.039-1.248	0.468	0.072-1.032	0.392
14	SO ₄ (mg/L)	30.397- 90.428	56.616	12.933-68.939	34.588	35.767-67.211	48.303
15	Fe (mg/L)	0.159-2.766	1.284	0.558-5.898	3.012	0.227-2.026	0.923
16	Pytoplankton (cells/L)	51,648-490,812	188,314	45,698-788,022	339,407	55,091-445,247	204,729
17	Macrophyte	<i>Salvinia</i> sp, Lotus (small)		<i>Eichornnia</i> sp. (rarely), <i>Salvinia</i> sp		<i>Salvinia</i> sp, Lotus (small), <i>Thypha</i> sp	

pH measurements in ex-sand mining waters were ranged from 3.4 - 7.6 with an average pH of 6.10 (Station 1), 6.64 (Station 2), and 7.03 (Station 3). This condition tends to be acidic and fluctuated. Therefore, pH is something that should be considered in terms of fish culture development in the ex-sand mining area in Pasir Sakti Sub-District, East Lampung Regency. While a proper pH for fish growth ranged from 6.5-9.0 with an optimal range of 7.5-8.7 (Kordi and Tancung, 2010). According to Kurniawan (2012) and Triswiyana et al. (2019), optimal range of pH for tilapia culture are 6.5 - 8.0.

Other chemical parameters examined in this study are ammonia (NH₃), nitrate (NO₃), phosphate (PO₄), sulfate (SO₄) and iron (Fe). The result showed that ammonia concentrations were ranged from 0.104-1.47 mg/L (with an average of 1.066 mg/L at Station 1, 0.632 mg/L at Station 2 and 0.545 mg/L at station 3). Phosphate concentrations were ranged from 0.001-0.111 mg/L (with an average of 0.024 mg/L at Station 1, 0.046 mg/L at Station 2 and 0.026 mg/L at Station 3). Nitrate concentrations were ranged from 0.244-3.48 mg/L (with an average of 0.835 mg/L at Station 1). Sulfate concentrations were ranged from 12.933-90.428 mg/L (with an average of 56.617 mg/L at station 1, 34.588 mg/L at station 2, and 48.303 mg/L at station 3); while Fe concentration were ranged from 0.159 to 5.898 mg/L (with an average of 1.284 mg/L at Station 1, 3.012 mg/L at Station 2 and 0.923 mg/L at Station 3).

Nitrate and sulfate concentrations show a proper range for aquaculture activities. Nitrate concentrations that are good for aquaculture activities are <1.0 mg/L (Setiadi et al., 2018). In comparison, sulfates levels in

the natural freshwater range from 2-80 mg/L (Effendi, 2003).

Furthermore, the result of phosphate, ammonia and Fe indicated that water conditions in ex-sand mining waters areas need some kind of treatment before it can be used for *O. niloticus* (Hastari et al., 2017; Anggraini et al., 2018). Fortunately, phytoplankton density indicates that ex-sand mining waters are suitable for aquaculture activities (Yulianto et al., 2017). The density of phytoplankton in the ex-sand mining waters area in the Pasir Sakti Sub-District showed a range of 51,648-788,022 cells/L with an average density of 188,314 cells/L at Station 1, 339,407 cells/L at Station 2 and 204,729 cells/L at station 3.

Suitability of water quality for aquaculture

Water suitability analysis was carried out using modified matching and scoring methods. This method is referring to the method from the Ministry of Maritime Affairs and Fisheries of the Republic of Indonesia (2011); Pramono et al., 2005; Radiarta et al., 2014; Hastari et al. (2017) and Yulianto et al. (2017). This method is presented in Table 1. The parameters considered in this study are water clarity, temperature, current, dissolved oxygen (DO), pH, salinity, Nitrate (NO₃-N), Phosphate (PO₄-P), iron (Fe) concentration and Sulfate (SO₄). The results of the suitability calculation of the ex-sand mining area for *O. niloticus* culture with floating fish cages are presented in Table 3. The result of suitability analysis with matching and scoring method showed a suitability level of 64% for Station 1 (Mulyosari Village); 68% at Station 2 (Rejomulyo Village), and 68% at Station 3 (Rejomulyo and Kedung Ringin Border Village).

Table 3. Suitability assessment of ex-sand mining area for tilapia (*O. niloticus*) culture by stations.

Parameter	Empiric value			Score (A)			Weight (B)	Maximum Score	Score (A x B)		
	St 1	St2	St3	St 1	St2	St3			St 1	St2	St3
Brightness (cm)	93.23	69.203	90.089	1	1	1	5	25	5	5	5
Dissolved Oxygen (mg/L)	6.984	6.587	6.983	5	5	5	10	50	50	50	50
Salinity (‰)	0.000	0.000	0.000	5	5	5	5	25	25	25	25
Temperature (°C)	32.133	32.336	32.606	3	3	3	5	25	15	15	15
pH	6.098	6.636	7.027	3	5	5	10	50	30	50	50
Nitrate (mg/L)	0.282	1.724	1.350	3	3	3	10	50	30	30	30
Ammonia (mg/L)	0.770	0.468	0.392	1	1	1	10	50	10	10	10
phosphate (mg/L)	0.025	0.046	0.027	1	1	1	10	50	10	10	10
Fe (mg/L)	1.284	3.012	0.923	3	3	3	15	75	45	45	45
SO ₄ (mg/L)	56,617	34.588	48.303	5	5	5	15	75	75	75	75
Phytoplankton (cells/L)	188,314	339,407	204,729	5	5	5	5	25	25	25	25
Total score							100	500	320	340	340
Suitability score (%)									64.00	68.00	68.00

Notes: St 1: Mulyosari Village; St 2: Rejomulyo Village; St 3: Boundary of Rejomulyo-Kedung Ringin Villages.

Based on this value, it can be concluded that the water quality from all stations in the ex-sand mining area is classified as S3 class or marginally suitable for *O. niloticus* culture. This condition means that the water in the ex-sand mining area has severe limiting factors for fish culture using floating fish cages (Radiarta et al., 2014; Hastari et al., 2017; Yulianto et al., 2017). The low suitability score is mainly influenced by several parameters, namely: clarity, dissolved oxygen, temperature, pH, ammonia, phosphate, and Fe concentrations. Furthermore, other parameters such as salinity, nitrate, sulfate, and phytoplankton density showed a suitable condition for aquaculture. Therefore, if the waters in the ex-sand mining area are to be used as a location for aquaculture activities, severe treatments are needed to improve water quality - especially for parameters with a low score

Conclusion

Water quality suitability score in the ex-sand mining area for *O. niloticus* culture is classified as class S3 or marginally suitable. This condition is mainly influenced by the parameters of clarity, dissolved oxygen, temperature, pH, ammonia, phosphate, and iron (Fe) concentration. Therefore, serious treatment is needed to improve water quality to make it suitable for *O. niloticus* culture activities using the floating fish cage method.

Acknowledgements

The authors would like to acknowledge the Integrated Laboratory and Center for Technological Innovation, University of Lampung, Lampung, Indonesia, for the access to laboratory facilities.

References

- Affan, J.M. 2012. Identification of location for the development of floating net cages based on environmental and water quality factors in east coast Bangka Tengah District. *Journal Depik* 1(1):78-85 (in Indonesian).
- Anggraini, D.R., Damai, A.A. and Hasani, Q. 2018. Analysis of the suitability of waters for aquaculture of grouper (*Cromileptes altivelis*) in the waters of Tegal Island, Lampung Bay. *Journal of Aquaculture Engineering and Technology* 6(2): 719-728 (in Indonesian).
- APHA. 2012. *Standard Methods for the Examination of Water and Wastewater*. 22nd Ed. American Public Health Association Inc., New York.
- Bellinger, E.G. and Sigeo, D.C. 2010. *Freshwater Algae. Identification and Use as Bioindicators*. Wiley-Blackwell. Oxford UK.
- Beveridge, M. 1991. *Cage Aquaculture*. Fishing news books. The USA. Elsevier. Amsterdam 264p.
- Boyd, C.E. 1990. *Water Quality in Pond for Aquaculture*. Alabama Agricultural Experiment Station Auburn University. Birmingham Publishing Co. Alabama.p 88.
- CCREM. 1987. *Canadian Water Quality*. Canadian Council of Resource and Environment Ministers. Ontario. Canada.
- Darmayanti, N.C.A., Manaf, A. and Briyatmoko, B. 2000. Identification of Chemical Compounds in Mineral Sand. *Proceedings of the National Seminar on Balian Magnet I Serpong*, 2 October 2000 (in Indonesian).
- Effendi, H. 2003. *Water Quality Study: For Water Resources and Environmental Management*. Kanisius. Yogyakarta (in Indonesian).
- El-Sayed, A.F.M. and Kawanna, M. 2008. Short Communication: Optimum water temperature boosts the growth performance of Nile tilapia (*Oreochromis niloticus*) fry reared in a recycling system. *Aquaculture Research* 39: 670-672
- El-Sayed, A.F.M. 2006. *Tilapia Culture*. CABI Publishing. Cambridge.
- El-Sherif, M.S, and El-Feky, A.M.I. 2009. Performance of Nile tilapia (*Oreochromis niloticus*) fingerlings. I. Effect of pH. *International Journal of Agriculture and Biology* 11(3): 297-300.
- EPA (Environmental Protection Agency). 2002. Risk assessment: Technical background information. RBG Table. Available from <http://www.epa.gov/reg3hwmd/risk>.
- Firdaus, 2012. Juggling Sand Puddles for Fishing. TROBOS AQUA Magazine edition 15 October - 14 November 2012 (in Indonesian).
- Gavriletea, M.D. 2017. Environmental impacts of sand exploitation: analysis of sand market. *Sustainability* 9(7): 118, doi: 10.3390/su9071118.
- Hasani, Q., Adiwilaga, E.M. and Pratiwi, N.T.M. 2012. The relationship between the harmful algal blooms (HABs) phenomenon with nutrients at shrimp farms and fish cage culture sites in Pesawaran District Lampung Bay. *Makara Journal of Science* 16(3): 183-191.
- Hasani, Q., Pratiwi, N.T.M., Effendi, H., Wardiatno, Y., Raja Guk Guk, J.A., Maharani, H.W. and Rahman, M. 2021a. *Azolla pinnata* as phytoremediation agent of iron (Fe) in ex sand mining waters. *Chiang Mai University Journal of Natural Sciences* 20(1): e2021017.
- Hasani, Q., Pratiwi, N.T.M., Wardiatno, Y., Effendi, H., Martin, A.N., Effendi, E., Pirdaus, P. and Wagiran. 2021b. Phytoremediation of iron in ex-sand mining waters by water hyacinth (*Eichhornia crassipes*). *Biodiversitas* 22(2): 838-845.
- Hastari, I.F., Kurnia, R. and Kamal, M.M. 2017. Analysis of suitability of grouper KJA cultivation using GIS in Lampung's waters. *Journal of Tropical Marine Science and Technology* 9(1): 151-159.
- Hidayati, D., Nurtjahyani, S.D., Oktafitria, D., Ashuri, N.M. and Kurniallah, W. 2019. Short communication: evaluation of water quality and survival rate of red tilapia (*Oreochromis niloticus*) by using a rice-fish culture system in quarry land of clay. *Biodiversity* 20: 589-594.
- Kordi, M.G.H and Tancung, A.B. 2010. *Management of Water Quality in Aquaculture*. Rineka Cipta Publisher. Jakarta. Jakarta (in Indonesian).
- Kurniawan, A. 2012. Analysis of fish genetic variations under post-mining tin by electrophoresis method. *Aquatics: Journal of Aquatic Resources* 6(2): 6-10 (in Indonesian).
- Kurniawan, A. 2018. *Introduction to Fish Farming Utilizing Wet Land Post-Tin Mining*. Textbooks. Bangka Belitung University Press. 107 pp (in Indonesian).

- Kutty, M.N. 1987. Site Selection for Aquaculture. Food and Agriculture Organization of the United Nations and African Regional Aquaculture Center Port Harcourt. Nigeria.
- Lucas, J.S., Southgate, P.C. and Tucker, C.S. 2018. *Aquaculture: Farming Aquatic Animals and Plants*. 3rd ed. John Wiley and Sons, New York.
- Menezes, A., Hishamunda, N., Lovshin, L. and Martone, E. 2017. Doing aquaculture as a business for small-and medium-scale farmers. Practical training manual. Food and Agriculture Organization of the United Nations (FAO). Rome.
- Ministry of Maritime Affairs and Fisheries of the Republic of Indonesia. 2011. Technical Instructions for Fish Culture in Floating Network Cages. Directorate General of Aquaculture. Jakarta (*in Indonesian*).
- Muhaemi, Tumuhuri, R. and Siegers, W. 2015. The suitability of water quality for tilapia cages (*Oreochromis niloticus*) in East Sentani Lake, Jayapura Regency, Papua Province. *The Journal of Fisheries Development* 1(2):45-58 (*in Indonesian*).
- Muhtadi, A., Pulungan, A., Nurmayyah, Fadlhin, A., Melati, P., Sinaga, R.Z., Uliya, R., Rizki, M., Rohim, N., Ifanda, D., Leidonald, R., Wahyuningsih, H. and Hasani, Q. 2020. The dynamics of the plankton community on Lake Siombak, a tropical tidal lake in North Sumatra, Indonesia. *Biodiversitas* 21: 3707-3719.
- Octorina, P., Novita, M.Z., Kustiawan, B. and Nurbaeti, N. 2017. Potential of forms of sand forms for fisheries in cultured based fisheries (CBF) systems and floating cages. *Limnotek* 24 (1): 44-5 (*in Indonesian*).
- Octorina, P., Nurbaety, N., Kustiawan, B. and Dindin. 2013. Trophic Status and Potential of Former Galian Pasir Fisheries in Titisan Village, Sukabumi Regency. *Proceedings of the National Seminar on Fisheries X*. Yogyakarta. August 28-29, 2013 (*in Indonesian*).
- Popma, T.J. and Lovshin, L.L. 1996. World prospect for commercial production of tilapia. Research and Development Series No. 41. International Center for Aquaculture and Aquatic Environments, Department of Fisheries and Allied Aquacultures of Auburn University, Alabama.
- Pramono, G.H., Hari, S. and Wiwin, A. 2005. Norms, Procedures, Guidelines, Specifications and Standards (NPGSS). Procedures and Technical Specifications Analysis of the Suitability of Grouper Cultivation in Floating Net Cages. Bakosurtanal: Marine Natural Resources Survey Center. Jakarta (*in Indonesian*).
- PT. Jaya Pacific Propertindo (without years). Proposed Sand Mining, Special Sand Terminal and Tambak House in East Lampung Regency.
- Radiarta, A., Saputra, and Priono, B. 2014. Areas of suitability mapping for mariculture development in Sateh Bay, West Nusa Tenggara. *Indonesian Fisheries Research Journal* 10: 19-32.
- Rizqan, A., Mahyudin, I., Rahman, M. and Hadie, J. 2016. Status of river water quality around the sand mining area in Batang Alai River, Wawai Village, South Kalimantan. *EnviroScientiae* 12 (1): 1-6 (*in Indonesian*).
- Sari, D.P. and Buchori, I. 2015. The effectiveness of the post tin mining reclamation program in Merawang District, Bangka Regency. *Journal of Urban Area Development* 11(3): 299-312.
- Setiadi, E., Widyastuti, Y.R. and Prihadi, T.H. 2018. Water quality, survival, and growth of red tilapia, *Oreochromis niloticus* cultured in aquaponics system. *E3S Web of Conferences* 47: 1-8.
- Supardan, K.M., Sukmawan, A. and Sutandi S. 2006. Inventory and evaluation of nonmetallic minerals in the districts of Central Lampung and East Lampung. *Proceeding Explanation of the Results of Field Activities for Geological Resource Center* pp. 1-5.
- Tatangindatu, F., Kalesaran, O. and Rompas, R. 2013. Study of physical and chemical parameters of water in fish culture area in lake Tondano, Paleloan Village, Minahasa Regency. *Jurnal Budidaya Perairan* 1(2): 8-19 (*in Indonesian*).
- Tomas, R.C. 1997. *Identifying Marine Phytoplankton*. Academic Press. New York. 858 pp.
- Triswiyana, I., Permatasari, A. and Kurniawan, A. 2019. Utilization of ex tin mine lake for aquaculture: case study of Muntok Sub-District, West Bangka Regency. *Samakia: Jurnal Ilmu Perikanan* 10(2): (1-4) (*in Indonesian*).
- Yamaji, I. 1976. *Illustration of the Marine Plankton of Japan*. Hoikusha Publ.Osaka, Japan.
- Yulianto, H., Hartoko, A., Anggoro, S., Hasani, Q., Mulyasih, D. and Delis, P.C. 2017b. Suitability analysis of Lampung Bay waters for grouper *Epinephelus* sp. farming activities. *Jurnal Akuakultur Indonesia* 16(2): 234-243.

● 13% Overall Similarity

Top sources found in the following databases:

- 8% Internet database
- Crossref database
- 9% Submitted Works database
- 7% Publications database
- Crossref Posted Content database

TOP SOURCES

The sources with the highest number of matches within the submission. Overlapping sources will not be displayed.

1	biodiversitas.mipa.uns.ac.id	3%
	Internet	
2	Universitas Brawijaya on 2021-09-16	2%
	Submitted works	
3	Beni, Zairion, Y Wardiatno. " Biological aspect of double-spined rock lo...	<1%
	Crossref	
4	Enis Morkoç, Vildan Tüfekçi, Huseyin Tüfekçi, Leyla Tolun, Fatma Telli ...	<1%
	Crossref	
5	G Mahasri, S Subekti, B B Angghara, F P Pratama. " Prevalence and inte...	<1%
	Crossref	
6	cmuj.cmu.ac.th	<1%
	Internet	
7	Osmania University, Hyderabad on 2018-08-14	<1%
	Submitted works	
8	academic-accelerator.com	<1%
	Internet	

- 9 "Tropical and Sub-Tropical Reservoir Limnology in China", Springer Sci... <1%
Crossref

- 10 H Basri, Manfarizah, H C Prayudi. "Analysis of water pollution index ar... <1%
Crossref

- 11 51747 on 2014-12-01 <1%
Submitted works

- 12 S Z Cahyani, E D Masithah, Prayogo. "The Dynamic of Density and Dive... <1%
Crossref

- 13 riunet.upv.es <1%
Internet

- 14 jurnal.unsyiah.ac.id <1%
Internet

- 15 Brevard Community College on 2004-12-11 <1%
Submitted works

- 16 L. Kannan, K. Vasantha. "Microphytoplankton of the Pitchavaram mang... <1%
Crossref

- 17 Maryam Babangida Adam, Jibrin Gambo, Edegbene A. Ovie. "Monitorin... <1%
Crossref

- 18 Universiti Sains Malaysia on 2014-01-09 <1%
Submitted works

- 19 da Fonseca, Tainá Garcia. "Environmental Risk Assessment and Toxici... <1%
Publication

- 20 media.neliti.com <1%
Internet

- 21 **bioflux.com.ro** <1%
Internet
-
- 22 **Abdel-Fattah M. El-Sayed. "Reproduction and seed production", Elsevie...** <1%
Crossref
-
- 23 **Universiti Sains Malaysia on 2015-09-17** <1%
Submitted works
-
- 24 **smujo.id** <1%
Internet
-
- 25 **upcommons.upc.edu** <1%
Internet
-
- 26 **globalscientificjournal.com** <1%
Internet

● Excluded from Similarity Report

- Bibliographic material
- Manually excluded sources
- Quoted material
- Manually excluded text blocks

EXCLUDED SOURCES

Universitas Brawijaya on 2021-06-06

72%

Submitted works

jdmlm.ub.ac.id

9%

Internet

researchgate.net

9%

Internet

doaj.org

8%

Internet

garuda.ristekbrin.go.id

7%

Internet

garuda.kemdikbud.go.id

7%

Internet

sciencegate.app

7%

Internet

repository.lppm.unila.ac.id

5%

Internet

semanticscholar.org

2%

Internet

EXCLUDED TEXT BLOCKS

JOURNAL OF DEGRADED AND MINING LANDS MANAGEMENTVolume 8, Number ...

ikee.lib.auth.gr

Assessment

repository.lppm.unila.ac.id

1 Department of

repository.lppm.unila.ac.id

IPB University, Bogor, West Java,Indonesia

cmuj.cmu.ac.th

Bandar

repository.lppm.unila.ac.id

Open Access

Institut Pertanian Bogor on 2022-10-05

et al. / Journal of Degraded and Mining Lands Management 8(4

ikee.lib.auth.gr

Figure 1).Figure 1. Map of the

www.globalscientificjournal.com

et al. / Journal of Degraded and Mining Lands Management 8(4

ikee.lib.auth.gr

Table 1. The

repository.its.ac.id

El-Sherif and El-Feky(2009

institutodepesca.org

Nitrate (mg/L)0

www.dws.gov.za

Ammonia (mg/L)<0.10.1 - 0

ir.unimas.my

mg/L)> 0.2 - 0.50.1-0

belajar.ditpsmk.net

from the Ministry of

A A Hakim, B Bagaskoro, A Mashar, A Farajallah, Y Wardiatno. " Morphology and molecular identification on ...

Radiarta et al. (2004

www.jurnal.unsyiah.ac.id

et al. / Journal of Degraded and Mining Lands Management 8(4

ikee.lib.auth.gr

Ex-sand mining

repository.lppm.unila.ac.id

et al. / Journal of Degraded and Mining Lands Management 8(4

ikee.lib.auth.gr

6TSS (mg/L)7TDS (mg/L)8

lawma.gov.ng

mg/L)11

lawma.gov.ng

P04-P

Rutgers University, New Brunswick on 2021-10-04

et al. / Journal of Degraded and Mining Lands Management 8(4

ikee.lib.auth.gr

of ex-sand

repository.lppm.unila.ac.id

et al. / Journal of Degraded and Mining Lands Management 8(4

ikee.lib.auth.gr

was calculated

Universitas Brawijaya on 2021-09-16

Hasani et al

Universitas Brawijaya on 2021-09-16

mg/L at Station

Enis Morkoç, Vildan Tüfekçi, Huseyin Tüfekçi, Leyla Tolun, Fatma Telli Karakoç, Tuğba Güvensel. "Effects of ...