

PAPER NAME

6289.pdf

AUTHOR

Aleksander Purba

WORD COUNT

3765 Words

CHARACTER COUNT

19808 Characters

PAGE COUNT

7 Pages

FILE SIZE

183.3KB

SUBMISSION DATE

Nov 23, 2022 8:16 PM GMT+7

REPORT DATE

Nov 23, 2022 8:16 PM GMT+7**● 19% Overall Similarity**

The combined total of all matches, including overlapping sources, for each database.

- 15% Internet database
- 3% Publications database
- Crossref database
- Crossref Posted Content database
- 16% Submitted Works database

● Excluded from Similarity Report

- Bibliographic material
- Cited material

12 DESIGN AND IMPLEMENT A MONITORING SYSTEM OF TRAFFIC SIGNAL USING MICROCONTROLLER DEVICES

*Aleksander Purba¹, Rahayu Sulistyorini², Agung Ilhami³ and Ageng Sadnowo Repelianto⁴

11^{2,3,4}Faculty of Engineering, University of Lampung, Indonesia

*Corresponding Author, Received: 04 Oct. 2019, Revised: 17 Nov. 2019, Accepted: 18 Feb. 2020

ABSTRACT: This project focused on designing traffic signal monitoring tools, based on ideas and concepts developed previously. Authors used the Arduino Nano module with ATmega328P as the microcontroller, which was chosen because it simplifies the scenario of traffic signal anomalies, short messages service (SMS) news content, and time settings. A microcontroller was used to process data from the interference detection result, and processing the SMS content, therefore, it is able to quickly inform the types of traffic signal disruptions. This research highlights the ability to autonomously diagnose traffic signal device systems, especially in its work function, with the intent to detect interference on the device, and provide report via SMS to a monitoring unit that is located under its respective division. Based on result findings it is possible to utilize this development in building an integrated traffic signal monitoring system services, in the form of mobile applications in the near future.

Keywords: Monitoring system, Traffic signal, Microcontroller, Malfunctioning, Short message service

1. INTRODUCTION

9 Traffic signal infrastructure is responsible for assigning the right of way to vehicular and pedestrian passage at intersections. Meanwhile, its management and operations requires the proper design, location, operation and maintenance, to provide safe and efficient movements. A lot of mysteries surround its mechanism of action, although they are relatively simple as the installation comprises of traffic signal heads, detection and a controller, which is the 'brains' behind the equipment, containing the information required to force the lights through various sequences. These signals run under a variety of modes, dependent on location and time of day, which under fixed time operation, displays green to each approach for the same amount of time per cycle, regardless of the traffic conditions.

This may be adequate in heavily congested areas, while instances where a lightly trafficked side road is included within the sequence, the system becomes very wasteful as no vehicles are waiting in some cycles, and the time could be better allocated to the busier approach. Vehicle actuation is one of the most common modes of operation, and as the name suggests, it takes into account demands on all approaches and also adjusts the green time accordingly. Furthermore, the requirements to actualize this mechanism are registered through the detection installed, either in the carriageway or above the signal heads, which the controller processes and further allocates the green time in the most appropriate way.

However, minimum and maximum periods are specified, and this cannot be violated, therefore, a

vehicle passing a detector demands a certain phase and once that phase is green, any subsequently passing automobile, causes the phase to extend. This continues as such up to the point where either the traffic demand ceases and another approach gains green, or a conflicting demand causes the maximum timer to count down. Moreover, while vehicle actuation mode is more responsive than fixed time it also has the propensity of being inefficient in instances where long queues build up on conflicting approaches. The setting of maximum timers is then difficult due to changes in traffic patterns through junctions over time, which should therefore be regularly updated, in order to maintain effective operation. This is a labor intensive task for a local transportation authority, which is often not undertaken, thus leading to the signals becoming less effective over time.

As all electronic equipment, these devices are subject to breakdowns, malfunctions, and power outages, which could lead to safe intersections becoming dangerously congested and confusing, therefore resulting in needless accidents. However, a study on the city of Boston calculated that simply reconfiguring the timings of 60 intersections in one district of the city could save US\$1.2 million per year, in terms of person-hours, safety, emissions, and energy costs [1]. In situations where malfunctioning occurs, the entity responsible for maintaining the signal may be held accountable, as regions and municipalities have a statutorily imposed duty, which ensure roads are safe for users. Furthermore, the Province of Ontario has set up certain minimum requirements for the maintenance of roadways, which include standards related to traffic signals, according to Regulation 239/02,

which states the Minimum Maintenance Standards for Municipal Highways, under the Municipal Act. However, section 13 of the O.Reg 239/02 stipulates that in cases where a malfunctioning traffic control signal system occurs, the minimum guideline is to “deploy resources as soon as practicable after the awareness of the defect, in order to commence repairs or replacements” [2]. Meanwhile, most regions and municipalities have no statutory in this regards as Ontario, and due to the fact that most of the traffic signals are categorized as isolated intersections, the surveillance system is therefore highly dependent on road users report. Hence, response time needed is longer, especially during out of work hours.

This project focused on designing traffic signal monitoring tools, based on ideas and concepts developed from the research conducted by Sivarao, Subramanian, Ezro and Anand [3] and Marzuki, Ahmad, Buyamin, Abas and Said [4], as well as self-diagnosis techniques, using the Reed-Solomon Codes by Tang and Wang [5]. Furthermore, a monitoring system with Proteus advancement tool, developed in Africa, was also used [6]. However, activities including designing concepts, materials selection, assembling tools, and traffic signal Fig.1

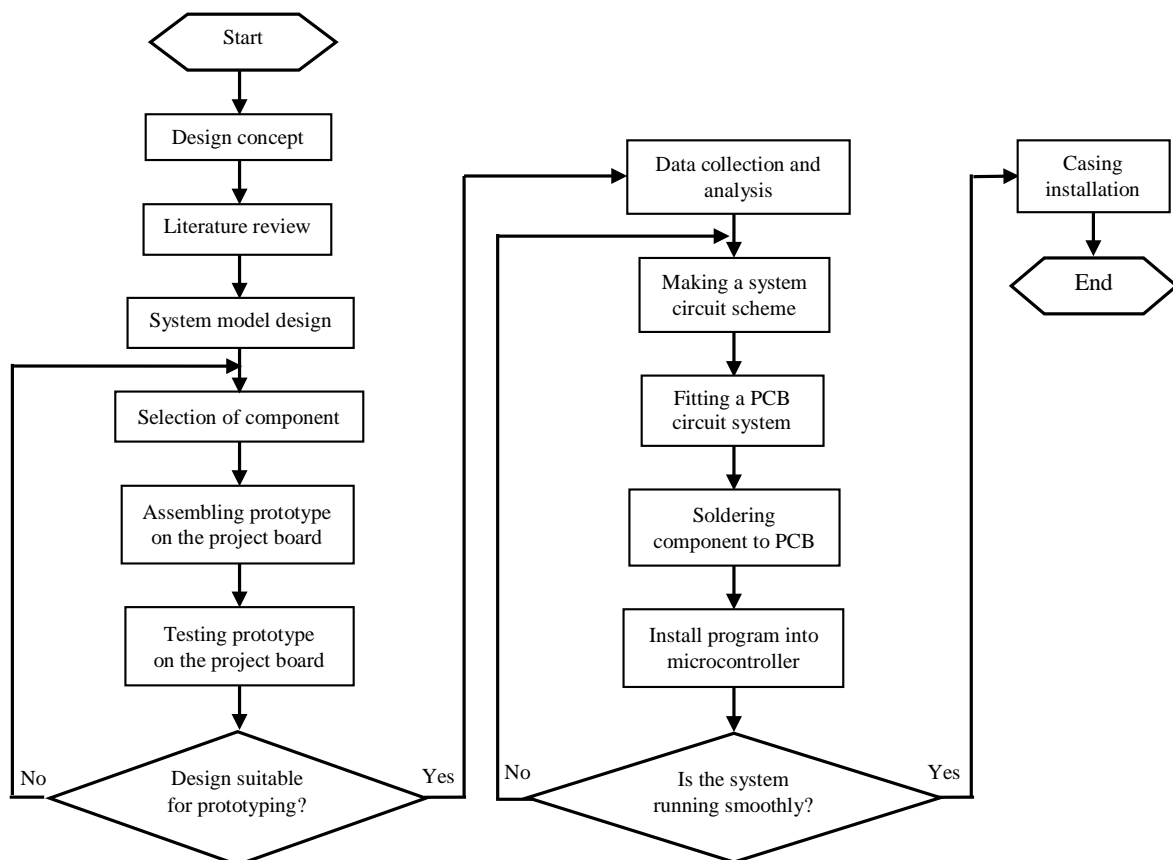
2. RESEARCH METHODOLOGY

The product was designed based on electronic circuit plan, where all blocks were arranged on the project board and tested individually, and also a combination on printed circuit board (PCB) was conducted, at periods of proper function. This study used the Arduino Nano module with ATmega328P as the microcontroller, which was chosen because it simplifies the scenario of traffic signal anomalies, short messages service (SMS) news content, and time settings.

This also facilitates programming, possesses a memory capacity that is capable of accommodating program scripts, it is affordable, readily available, and is relatively small in size. However, programming was carried out using the built-in Arduino IDE open-source software, and the general description of electronic circuit design is seen in Fig. 1 as developed previously [7-9].

The specifications of the designed system are (1) Block system on the transmitter using voltage DC 5V; (2) Uses three types of push button as a simulator to represent three colors of traffic lights; (3) ATmega 8 microcontroller serves as the main controller of the transmitter and performs the role to analyze the push button condition; (4) Using two

Fig. 1 Design circuit flow chart



units of mobile phone, use as a transmitter and another as a receiver; (5) The system is able to change the signal received by microcontroller into SMS to be used as information code to be displayed on personal computer (Intel Pentium PC 1.80 GHz, 256 MByte RAM, Window XP, and 80 GB HDD); (6) The data display on the computer provides information such as types of malfunction, time of incident, and traffic light location; (7) Communication between mobile phone receivers with PC is designed using serial 8 bit 19200 bps; (8) The system uses Visual Basic 6.0 to display the results of the information it receives; and (9) The system uses Microsoft Office Access 2003 to create databases.

3. RESULT AND DISCUSSION

Each traffic signal display is equipped with a form of light sensor, positioned in a way, in order to detect beams from the traffic signal. This is then processed by the logic gate and microcontroller to be diagnosed, based on the rational state, guard time and verification of the programming anomaly scenario. Furthermore, the microcontroller

recognizes the anomaly and immediately turns all traffic signal display (red, yellow and green) off. Meanwhile, during the termination process, the microcontroller instructs the A6 GSM module to dispatch an SMS, at certain time intervals, according to the program (e.g., once every hour) as developed previously in context of documents identification in a library system [10].

Therefore, the emergency light flashes periodically, serving as a visual marker, which indicates that the signal is under repair. Hence, mobile or smartphones can be used as an SMS receiver by entering the recipient's number from the traffic signal in the microcontroller program.

Switching mode power supply (SMPS) with DC 12V 10A voltage was used as the main source. This voltage was chosen to supply the relay and a series of LED lights on the traffic display and emergency flash. In addition, step-down DC to DC buck converter was also applied by reducing the DC 12 Volt voltage from SMPS to DC 5V 3A, which was further used to supply logical state, guard time, data latch, reflected light sensor, GSM A6 module, and the microcontroller as shown in Fig. 2.

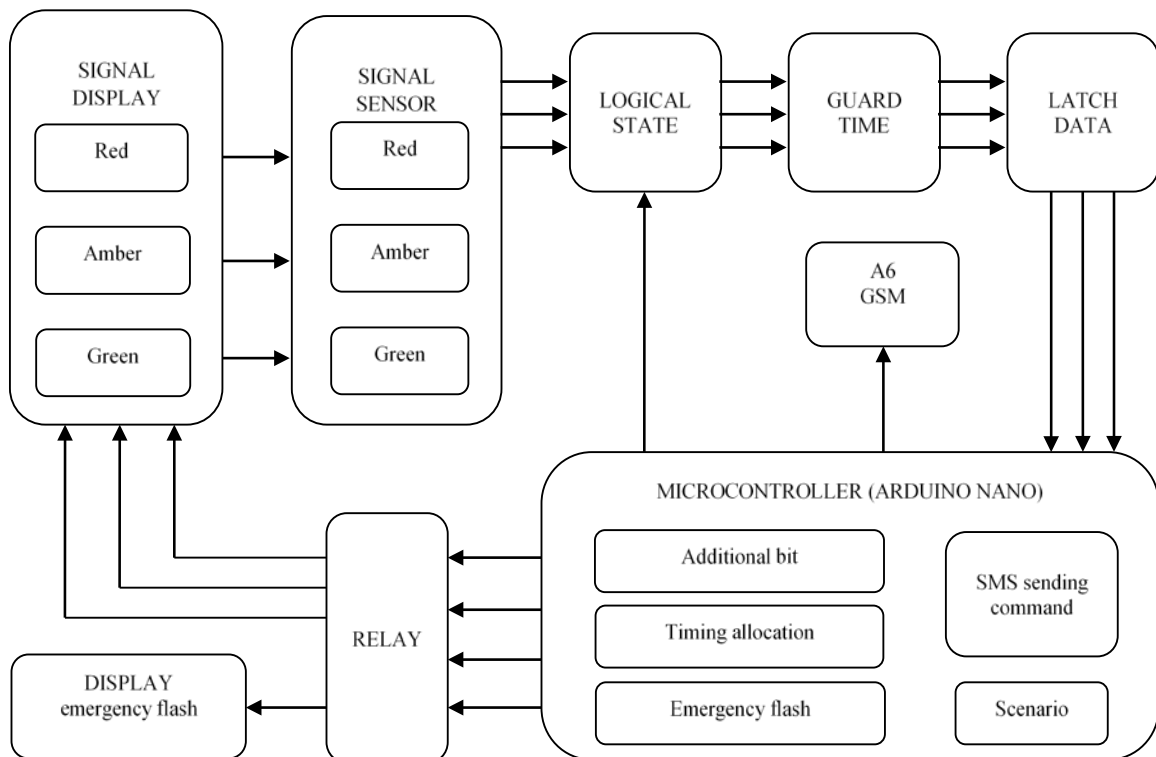


Fig. 2 Devices diagram block

Referring to Fig. 2, a design of electronic series consists of some blocks:

1. The traffic signal display block consists of the combination of a series of light emitted diode (LED) illuminations (red, amber and green), and placed between them are three light dependent resistor sensors (LDRs), used to detect reflections produced by LEDs and other reflectors.

2. The emergency flash display block consists of a combination of LED beams, functioning as visual markers, and the main traffic signal, during the repair process.

3. Reflection sensor block. The readings of each LDR (red, amber, and green) are entered into three voltage comparator circuits. Therefore, if it obtains reflected light, the sensor produces a LOW logic, and on the contrary, a HIGH logic is emitted in the absence of reflected light.

4. The logical state block is an electronic path, which uses an integrated circuit (IC) type CD4028 (BCD to decimal decoder), designed to identify different bits of each sequence of statement traffic signals, in cases of anomaly. Furthermore, the input pin of this IC is a 4-bit binary number (from 0000 to 1111), while the output pin is represented by 10 digits (Y0 to Y9). The following are some identity bits designed for each traffic signal anomaly statement:

4.1. the red display is given the 0101-bit, characterized by pin Y5.

4.2. the amber demonstration specifies the 0011-bit, represented by pin Y3.

4.3. the green exhibition is allotted the 0111-bit, denoted by pin Y7.

5. Guard time block: Anomalous data Y5, Y3, and Y7 cannot be considered valid when in the guard time series, which was allotted a time period of 1 second in this study. For example, if Y5 sends an under-1 second-anomalous signal, it is not considered an anomaly and vice versa.

6. Latch data block: After the validity of the anomaly signal has been considered, the block is then locked (latch). This is further processed by the microcontroller, at the end of a cycle of traffic signal.

7. Microcontroller block: This is divided into five sub-blocks with their respective functions, including:

7.1. timing traffic signal functions as a time allocator per cycle.

7.2. provision of additional bit function for CD4028 IC input (logical statement block), in determining bit during an anomaly.

7.3. anomaly data verification scenario, through the process of matching results of processing data latch blocks with anomalous scenarios, which have been programmed in the microcontroller.

7.4. SMS sending command, when a change in the traffic signal anomaly was considered a

malfunction (through the verification process) to be forwarded as news to the A6 GSM module block.

7.5. emergency flash: This sub-block works by flashing, depicting a sign that the main traffic signal is under maintenance.

8. The GSM block A6 module works by sending SMS on the processing results, from the microcontroller to the operator. This occurs because the unit has been recognized by the Arduino library, therefore, it is easily programmed in the IDE, with the AT command instruction set.

9. Relay block is a series, consisting of 4 types of transmissions, while the ULN2803A IC and optocoupler turns ON or OFF the traffic signal display and emergency flash. These conditions for the four types of relay, follow the order of the microcontroller sub-block timing functions.

The traffic signal cycle in this study followed the sequence as shown in Fig 3.

1. Red OFF, Amber ON, Green OFF;
2. Red ON, Amber OFF, Green OFF;
3. Red ON, Amber ON, Green OFF;
4. Red OFF, Amber OFF, Green ON;
5. The second cycle (restarts from Red OFF, Amber ON and Green OFF).

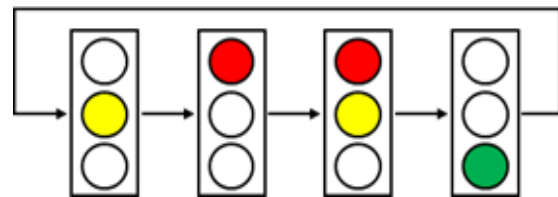


Fig. 3 Traffic signal cycle

Therefore, the implementation of a monitoring system completely as combined work of Fig. 1 and Fig. 2 respectively, is shown in Fig. 4 below.

Generally, this system has two main parts. The first part is a station which could be a simulator, a microcontroller (Arduino UNO) or a GSM SIM800L module. It functions as an information provider. While the second part is called a server, which comprises a cell phone or smartphone and a set of computers. This section performs the role of information reception. The traffic monitoring system device is basically designed to quickly inform the traffic light conditions in the event of damage. To speed up information arrival, a wireless communication service is chosen, by using a GSM SIM800L module. The microcontroller will diagnose the traffic lights conditions that are in operation. Some damages have the tendencies of occurrence when the traffic lights operate. Hence they will be programmed on this microcontroller. If there is a corresponding damage scenario, the microcontroller will order the GSM SIM800L module to send information in the form of an SMS about the damage that occurred to the server.

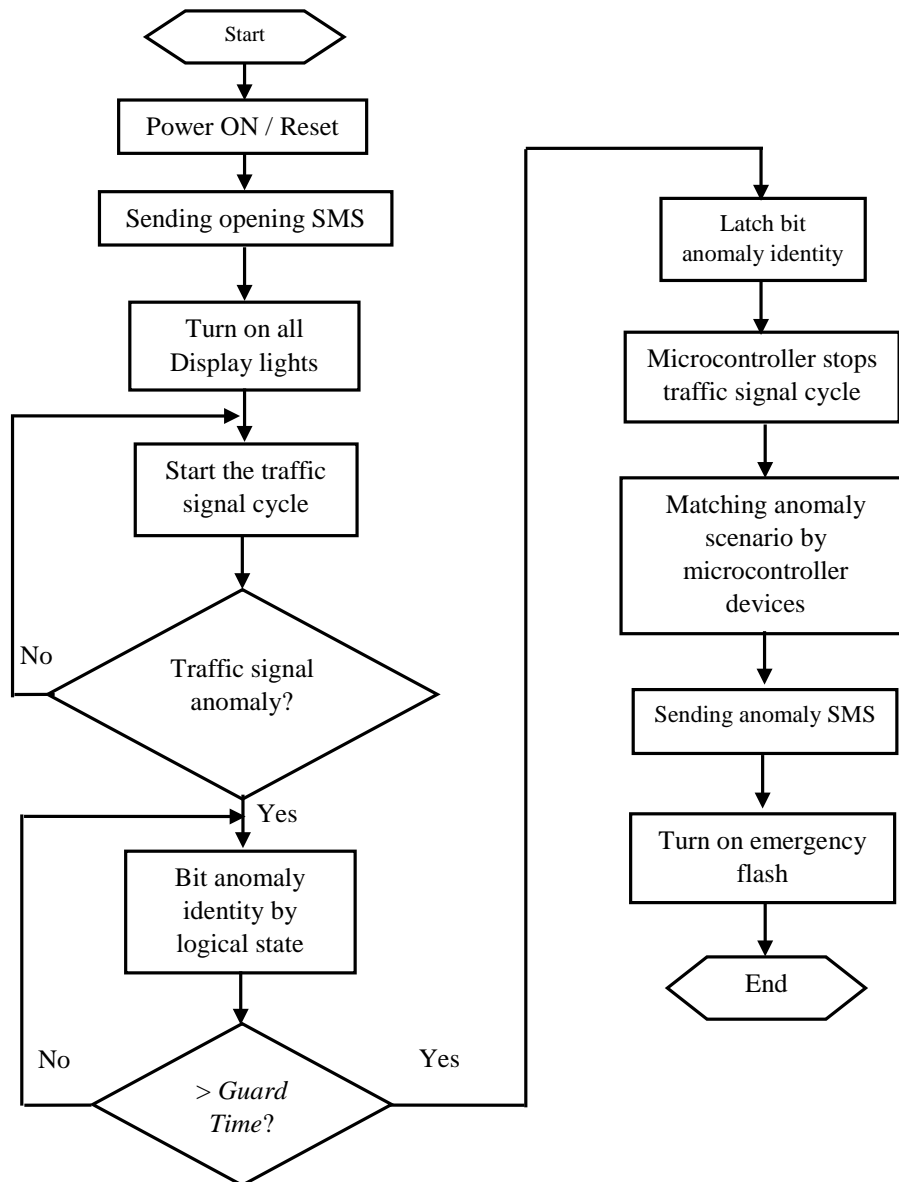


Fig. 4 Flow chart of signal monitoring system

In the early stages of tool design, it is not yet possible to make the equipment ready for use as a whole. This is due to the need to perform simulations in advance and test tools to find the specifications to be achieved. The desired initial stage of achievement in the prototype of the self-diagnosis system of traffic lights is described as follows:

1. The station section can provide information on its own condition (auto-update) as long as the traffic lights operate normally at a specified time to the server. for example, every 10 minutes the station continuously sends an SMS to the server that the traffic lights are operating normally.

2. The station section can provide information in the form of SMS news immediately to the section in the server in cases of malfunctions in the condition of the traffic lights that are in operation. At this initial stage, an abnormality scenario will be performed with the aid of the simulator section.

The principle behind of this simulator system is designed to replace the functions of real traffic lights. The reason for replacing the overall traffic light with a simulator is to simplify the overall system testing process. The role of the simulator is to prevent a variety of possible damage that may occur at any traffic lights on the highway. At the initial stages of this design, there are two possible abnormalities that can occur at any traffic light.

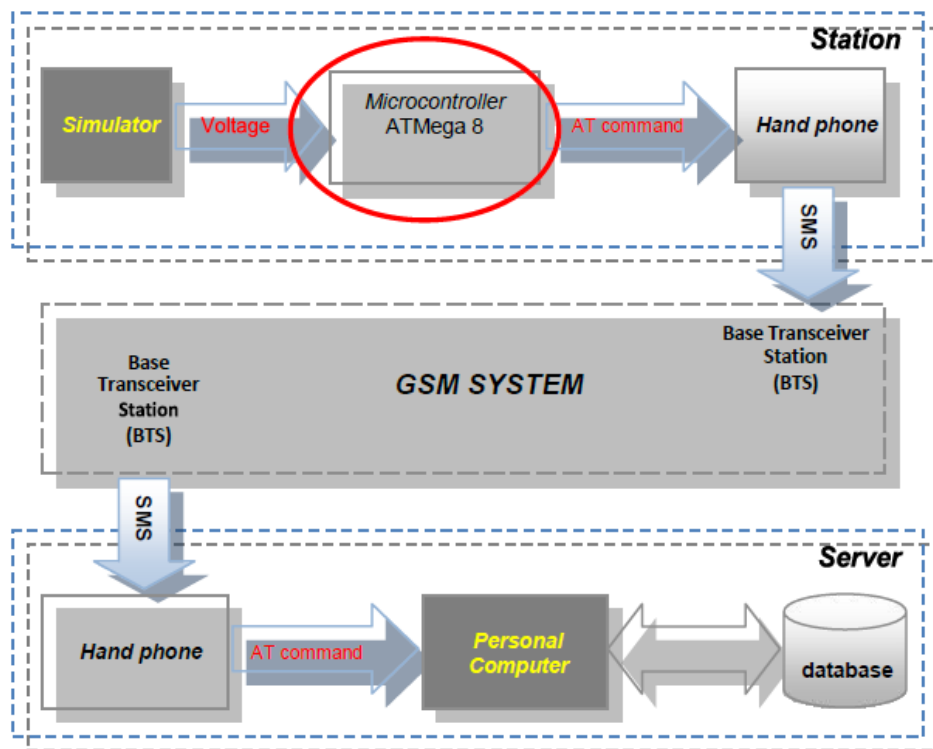


Fig. 5 Self-diagnosis system of traffic light [7]

1. The station section can provide information on its own condition (auto-update) as long as the traffic lights operate normally at a specified time to the server. For example, every 10 minutes the station continuously sends an SMS to the server that the traffic lights are operating normally.

2. The station section can provide information in the form of SMS news immediately to the section in the server in cases of malfunctions in the condition of the traffic lights that are in operation. At this initial stage, an abnormality scenario will be performed with the aid of the simulator section.

The principle behind of this simulator system is designed to replace the functions of real traffic lights. The reason for replacing the overall traffic light with a simulator is to simplify the overall system testing process. The role of the simulator is to prevent a variety of possible damage that may occur at any traffic lights on the highway. At the initial stages of this design, there are two possible abnormalities that can occur at any traffic light.

1. Abnormalities as a result of the break-up of one or more lights, also the occurrence of more than one light at the same time. The state of the light is illustrated by the high logic condition (1), while the condition of the off lights is represented by the low logic condition (0).

2. Abnormalities that occur in the timer system at the traffic light. For example, the red light is simulated for 10 seconds, after which a yellow light

is followed for 5 seconds and the green light lasts for 15 seconds. This kind of scenario will be programmed inside the microcontroller. If the traffic lights operation is not in accordance with this scenario, the microcontroller will regard it as an abnormality. Furthermore, the microcontroller will instruct the SIM800L module to send SMS messages to the server that there has been an abnormality in the traffic light timer system.

The simulator section is made up of various parts, namely:

1. Four channel solid state relay (SSR) modules.
2. Arduino UNO, a microcontroller which serves as a diagnostic data processor. It is a storage place for several scenario rules and at the same time giving orders whether or not the GSM module sends news.
3. SIM800L GSM module performs the roles of sending news in the form of SMS results from diagnosis and microcontroller commands to the server. The communication service used is GSM. In this module, you must insert a SIM card that has been topped up and activated the SMS service. This SIM800L module is ordered using AT Command. Library AT Command can be easily downloaded from the official Arduino site. It is an open source, hence anybody can download it freely and may be used for the development of a programming electronics based on Arduino.
4. The 3-color lamp module, as a miniature of the real traffic lights
5. Switching mode power supply (SMPS), as a 12-

volt DC power source and 5 volts to turn on the four previous modules.

4. CONCLUSION

This research highlights the ability to autonomously diagnose traffic signal device systems, especially in its work function, with the intent to detect interference on the device, and provide report via short message service (SMS) to a monitoring unit. Furthermore, this can be placed in any area covered by the Global System for Mobile Communication (GSM) wireless communication service. Meanwhile, a microcontroller was used to process data from the interference detection result, and processing the SMS content, therefore, it is able to quickly inform the types of traffic signal disruptions. Hence, it is possible to utilize this development in building an integrated traffic signal monitoring system services, in the form of mobile applications.

5. ACKNOWLEDGMENTS

Authors would like to express our special thanks of gratitude to Ministry of Research and Higher Education of Republic of Indonesia through DRPM (Penelitian Terapan) for providing research funds during 2017 – 2019.

6. REFERENCES

- [1] Boston Transportation Department. The benefits of retiming/rephasing traffic signals in the Back Bay, 2010, pp. 1-33. http://www.cityofboston.gov/images_documents/The%20Benefits%20of%20Traffic%20Signal%20Retiming%20Report_tcm3-18554.pdf
- [2] Municipal Act, Ontario Regulation 239/02, Minimum Maintenance Standards for Municipal Highways, 2001, pp. 1-10. <https://www.ontario.ca/page/government-ontario>
- [3] Sivarao, Subramanian S. K., Ezro M., and Anand T. J. S., Electrical & Mechanical Fault Alert Traffic Signal System Using Wireless Technology, International J. of Mechanical & Mechatronics Engineering IJMME-IJENS, Vol.10, No.4, 2010, pp.15-18.
- [4] Marzuki M. Z. A., Ahmad A., Buyamin S., Abas K. H., and Sain S. Hj. M., Fault Monitoring System for Traffic signal, J. of Teknologi (Science and Engineering), Vol.73, No.6, 2015, pp. 59-64.
- [5] Tang X., and Wang S., A Low Hardware Overhead Self-Diagnosis Technique Using Reed-Solomon Codes for Self-Repairing Chips, J. of IEEE Transactions on Computers, Vol.59, Issue 10, 2010, pp. 1309-1319.
- [6] Okwu P. I., Mbonu E. S., Ezekwe C. G., and Ajuzie C. U., Quick Prototyping of Real Time Monitoring System Using Proteus Development Tool: A Case for Self Diagnostic Traffic Signal System, African J. of Computing & ICT, Vol.6, No.5, 2013, pp. 147-154.
- [7] Purba A., Sulistyorini R., Repelianto A. S., and Ilhami. A., Developing Monitoring System of Traffic Signal Using Microcontroller Device by SMS of GSM Network, Conference Proceeding, in Proc. 1st of Nat. Conf. on SINTA FT UNILA, 2018, pp. 273-277.
- [8] Rasha F. K., Traffic Light Control System Using Microcontroller, AL-Qadisiyah J. of Pure Science, Vol.23, No.2, 2018, pp. 269-280.
- [9] Kareem T. A., and Jabbar M. K., Design and Implementation Smart Traffic Light Using GSM and IR, Iraqi Journal for Computers and Informatics, Vol.44, No.2, 2018, pp. 1-5.
- [10] Kumar R. S., and Kaliyaperumal K., Applications of GSM Technology for Documents Identification In A Library System, International J. of Academic Library and Information Science, Vol. 2 No.1, 2014, pp. 1-6.

Copyright © Int. J. of GEOMATE. All rights reserved, including the making of copies unless permission is obtained from the copyright proprietors.

● 19% Overall Similarity

Top sources found in the following databases:

- 15% Internet database
- Crossref database
- 16% Submitted Works database
- 3% Publications database
- Crossref Posted Content database

TOP SOURCES

The sources with the highest number of matches within the submission. Overlapping sources will not be displayed.

1	id.123dok.com Internet	3%
2	traffic-signal-design.com Internet	3%
3	123dok.com Internet	2%
4	Federal University of Technology on 2021-08-12 Submitted works	2%
5	mcleishorlando.com Internet	2%
6	King Mongkut's Institute of Technology Ladkrabang on 2020-10-16 Submitted works	2%
7	Caledonian College of Engineering on 2015-12-27 Submitted works	1%
8	Bahrain Polytechnic on 2019-06-20 Submitted works	<1%

9	ite.org Internet	<1%
10	Universitas Indonesia on 2022-11-06 Submitted works	<1%
11	Sriwijaya University on 2019-08-29 Submitted works	<1%
12	Universiti Teknologi Malaysia on 2022-02-08 Submitted works	<1%
13	"Advances in Network-Based Information Systems", Springer Science a... Crossref	<1%
14	Apoorv Arora, Vaibhav Goel. "Real Time Fault Analysis and Acknowled... Crossref	<1%
15	School of Business and Management ITB on 2019-02-07 Submitted works	<1%
16	Stafford College on 2015-01-12 Submitted works	<1%
17	The London College UCK on 2021-07-09 Submitted works	<1%
18	ottawa.ca Internet	<1%