

PAPER NAME

Ameliorative effects of *Costus speciosus* on biochemical and histopathological changes in alloxan-ind

AUTHOR

Endang L Widiastuti

WORD COUNT

4607 Words

CHARACTER COUNT

25161 Characters

PAGE COUNT

7 Pages

FILE SIZE

1.2MB

SUBMISSION DATE

Feb 19, 2022 9:32 PM GMT+7

REPORT DATE

Feb 19, 2022 9:32 PM GMT+7

● **19% Overall Similarity**

The combined total of all matches, including overlapping sources, for each database.

- 10% Internet database
- 16% Publications database
- Crossref database
- Crossref Posted Content database
- 9% Submitted Works database

● **Excluded from Similarity Report**

- Bibliographic material
- Manually excluded sources
- Manually excluded text blocks

RESEARCH ARTICLE

OPEN ACCESS

Ameliorative effects of *Costus speciosus* on biochemical and histopathological changes in alloxan-induced diabetic mice

Ana Triana Maiyah¹, Endang Linirin Widiastuti¹, Sajid Umar²

¹Department of Biology, Faculty of Mathematics and Sciences, University of Lampung, Indonesia

²Department of Pathobiology, Faculty of Veterinary and Animal Sciences, Arid Agriculture University, Rawalpindi, Pakistan

Abstract

The present study evaluated the ameliorative effects of *Costus speciosus* (CS) on biochemical and histopathological changes in alloxanized mice. Diabetes was induced in mice by administration of alloxan monohydrate (0.65mg/100g BW). Root extract of CS (10, 20 and 50 mg/100g BW) and metformin (19.5 mg/100g BW) as the standard drug were administered orally using a gavage to alloxanized mice daily for 14 days. Our study showed that oral administration of CS significantly decreased the blood glucose and total serum cholesterol levels. Moreover, CS restored the altered plasma enzyme (AST, ALT, LDH, ALP and ACP) levels. The reversal in liver and pancreatic histopathology further supports the protective effect of the CS extract towards diabetic damage. Extract of CS is effective in controlling blood glucose in diabetes and protecting liver and pancreatic tissues from diabetic damage. However, further studies are indeed required to prove the safety and efficacy of CS extracts as a potential anti-diabetic agent in clinical practices.

Keywords Alloxan, biochemical changes, *Costus speciosus*, *Diabetes mellitus*, histopathology, mice.

Received May 15, 2016

Accepted July 15, 2016

Published August 15, 2016

*Corresponding author Sajid Umar

E-mail s.umar@envt.fr

Tel +782316692



To cite this manuscript: Maiyah AT, Widiastuti EL, Umar S. Ameliorative effects of *Costus speciosus* on biochemical and histopathological changes in alloxan-induced diabetic mice. Sci Lett 2016; 4(2):140-146.

Introduction

Diabetes mellitus (DM) is one of the most common metabolic disorders worldwide, affects the life quality of patients by bringing huge pressure to society and public health [1]. The global prevalence of DM has shown an upward trend over the past few decades. Nearly 2.2% of the total deaths in the world are caused by DM [2]. Every ten seconds a person dies from DM related causes. DM, therefore, has become a very serious public health problem with a heavy socioeconomic burden to most of the South Asian countries including Indonesia. Current numbers of DM patients are approximately 150 million to 300 million, which is predicted to be double by the year 2025[2]. Persistent hyperglycemia in DM leads to the development of secondary complications including neuropathy, nephropathy, and retinopathy [3, 4]. Increased production of free radicals and reactive oxygen species (ROS) have been observed during DM leading to increased lipid peroxidation and degradation of DNA and proteins. Autoimmune reactions and inflammatory cytokines initiate ROS production in type 1 diabetes, which cause β -cell dysfunction [5]. While in type 2 diabetes, β -cell apoptotic pathways impair insulin synthesis and are activated by ROS leading to insulin resistance [3, 6].

Despite the great strides made in the understanding and management of DM, related complications are increasing vigorously unabatedly

[7]. Currently, there are no therapeutic regimens available which can fully cure DM, although most of them can reduce blood glucose and fat levels in blood circulation [1]. Traditional treatment aims to restore blood glucose levels and pancreatic islet function only. Additionally, some oral antihyperglycemic agents display various adverse effects such as indigestion, constipation, insulin resistance, hypoglycemia and edema. Metformin, a biguanide antihyperglycemic agent, is widely used to lower blood glucose in type 2 DM and do not cause hypoglycemia [8]. However, many researchers reported unsatisfactory therapeutic results for current medicines. The basic reasons for limiting compliance for therapeutic regimen are lack of confidence, patient education/ belief, side effects of medicine and medicine taste. These issues have led to the selection of alternative therapeutic regimen for the treatment of DM. Searching for alternative treatment of DM and related complications are highly demanded.

Plants are considered an important source for novel drugs due to the potent efficacy with few side effects. Plants with anti-diabetic activities could provide useful ingredients for the management and treatment of DM [9]. Active compounds found in plants are being evaluated and used for the treatment of various diseases, including high blood pressure, cancer, heart problems and gastrointestinal disturbances [10]. Recently, antidiabetic agents of plant origin, such as *Costus speciosus* (CS) have

gained the attention of scientist due to unwanted side effects with other pharmacological antidiabetic drugs. CS (Family: *Costaceae*) is a valuable medicinal plant which is being used for the treatment of various health issues in humans [11, 12]. Diosgenin is an important phytochemical of CS and being used as herbal medicine for the control of DM in Indonesia. CS has gained value as antidiabetic plant and being cultivated on a large scale [10]. Herbal medicines possessing a polymodal protective action are under the intensive research in this context [11, 12]. However, the data on the mechanisms of action of these drugs are insufficient. Keeping this in view, the present study was designed to study the antidiabetic and antilipidemic effects of CS along with ameliorative effects on pancreas and liver histopathology in alloxan induced diabetic mice.

Materials and Methods

Plant material

The plant material for the present investigation was collected from the field areas of Bandar Lampung, Lampung Indonesia in June 2014. Plant material was verified by a botanist and a voucher specimen deposited at Department of Botany, Lampung University Indonesia.

Preparation of the extract

Soxhlet apparatus is a method to extract a soluble fraction from a solid medium. This apparatus consists of a condenser, an extraction unit and a round bottom flask. It has a standard paper round glass joint. The extraction unit and control unit plays a vital role in this apparatus. The sun-dried coarsely ground rhizome of CS (100g) was weighed and placed inside the extraction unit. The flask was filled with solvent 100% ethanol (250ml) and apparatus was switched on. After a few hours (approximately four cycles), it was switched off and the extract was collected from the flask. The evaporated final content was used for the phytochemical work and animal treatment [6].

Animals and diabetes induction

All animal experiments were approved by the University Ethics Committee on the use of laboratory animals and experiments were performed according to the Committee guidelines. Thirty male mice (*Mus musculus*) were purchased from the Veterinary Investigation Center (BPPV), Lampung, Indonesia (age 4 months and weight 30-40 g). Mice were conditioned in polyurethane boxes, placed in an air-conditioned environment at 25°C with controlled

lighting and exhaust, and received standard laboratory diet (protein, 16.04%; fat, 3.63%; fiber, 4.1%; and metabolic energy, 0.012 MJ) and water *ad libitum*. Prior to the inoculation of alloxan monohydrate, no feed was offered to mice for 12 hours. Type 2 DM was induced using intravenous alloxan (Sigma-Aldrich 3050 Spruce St., St. Louis, MO 63103, USA) at a dose of 0.65mg/100g of body weight into tail veins. Mice with a fasting plasma glucose range >200 mg/dl were considered diabetic and used for the investigation. The control animals were administered with phosphate buffer saline (PBS; pH 7.0). Diabetic animals that died during the post-induction period or at follow-up were replaced to avoid compromising the final number of mice in the sample. Animals were randomly assigned to 6 experimental treatments as shown in Table 1. Hyperglycemia mice were treated using an ethanol extract of CS dissolved in Tween 40, through oral administration daily upto 14 days.

Table 1 Experimental design.

Treatments
Control negative
Control positive (untreated diabetic)
DM+ CS (10mg/100g BW)
DM+ CS (20mg/100g BW)
DM+ CS (50mg/100g BW)
DM + metformin (19.5mg /100 g BW)

BW= body weight; CS= *Costus speciosus*; DM= *Diabetes mellitus*

Collection of blood sample

Mice were euthanized using pentobarbital sodium after 14 days of treatment. Blood samples were taken and harvested sera stored at -20°C for biochemical analysis.

Biochemical analysis

Blood samples were examined to determine plasma glucose, insulin, C-peptide level and total cholesterol concentration by using radioimmunoassay kits (Perkin Elmer, Massachusetts, USA). Alanine aminotransferase (ALT), aspartate aminotransferase (AST), lactate dehydrogenase (LDH), alkaline phosphatase (ALP) and acid phosphatase (ACP) activities were measured using Bayer Express plus Clinical Chemistry Auto-analyzer (Bayer® Germany).

Histopathological investigations

Tissue specimens (liver, pancreas) were dissected and preserved in a 10% solution of formaldehyde. The tissues were dehydrated because the reagents used at a later stage were immiscible with water. Varying concentrations of isopropyl alcohol (70%, 80%, 90%, 96%, and 100%) were used for the

dehydration. The minimum time for dehydration between two different concentrations was 1 h. The fixed tissues were then processed for routine histological examination. The sections (5 μ m) from each of the tissues were examined using a light microscope ($\times 40$) after staining with hematoxylin and eosin dye [13].

Statistical analysis

Biochemical and histological lesion data were compared using one-way analysis of variance (ANOVA) followed by Post Hoc Dunnett's test (SPSS 13.0 for Windows program; SPSS Inc., Chicago, Illinois, USA). The *P* value of <0.05 was considered statistically significant and values were expressed as the mean \pm standard deviation of the mean (SDM).

Results

Biochemical analysis

The anti-hyperglycemic effect of the C Son the fasting serum glucose levels in diabetic mice was determined. Diabetic mice showed significantly higher levels of glucose than mice in the negative control group. Our data revealed a drop in serum glucose levels with CS in a dose dependent manner (Table 2). It was revealed that CS can significantly decrease ($P<0.05$) serum glucose levels at a dose rate of 50mg/100 g BW/day compared with the diabetic mice. Similarly, mice treated with metformin also showed a significant reduction ($P<0.05$) in glucose level than mice in the negative control group. Moreover, a significant reduction in ($P<0.05$) insulin and C-peptide levels in alloxanized mice was observed. After treatment with CS, the level of insulin and C-peptide was increased in a dose dependent manner. At the end of the study, values of insulin and C-peptide were similar to that of negative control mice in CS (50 mg/100 g BW/day) and metformin treated mice. In addition, a significant increase ($P<0.05$) in the levels of total cholesterol in diabetic mice than in normal mice was observed. Administration of CS brought back the levels of serum lipids to near normal, especially at higher doses (Table 2). The activities of plasma enzymes AST, ALT, LDH, ALP and ACP were significantly increased in diabetic mice compared to normal controls. However, oral administration of CS (50mg/100g BW) for 14 days significantly ($P<0.05$) decreased the levels of these enzymes in CS and metformin treated mice. However, a decrease in the level of these enzymes was more prominent in those mice treated with higher doses of CS (Table 3).

Histopathologic observations

Non diabetic control mice showed normal liver parenchyma with general structures preserved, including hepatic lobules with normal hepatocytes surrounded by sinusoids and distributed radially towards the centrilobular veins, and containing kupffer and red blood cells in the capillary lumen. Portal spaces were also normal, with no observed inflammatory infiltration, fatty degeneration or abnormal distribution of fibroblasts or collagen in mice sacrificed at 14 days of follow-up (Fig. 1A). More prominent pathological lesions were observed commonly in the liver and pancreas due to toxicity of alloxan. Severe micro-vesicular fatty degeneration was observed in the livers of diabetic untreated mice associated with the presence of dilated sinusoids and a progressive loss of general organ structure (Fig. 1B). Inflammatory changes consistent with steatohepatitis, which were represented by mononuclear inflammatory infiltrates of moderate intensity of analyzed liver histological sections. CS nullified the toxic effects of alloxan on liver tissue in a dose dependent manner. Interestingly, metformin showed better ameliorative effects than CS at dose rate of 10 and 20 mg/100g BW, but less than 50 mg/100g BW CS (Fig. 1C and 1D).

The sections of the pancreas from untreated diabetic mice showed an extensive destruction of islet cells as compared with that of healthy control mice (Fig. 2A and 2B). Further, there was a definite reduction in the number of islets in diabetic mice than in the healthy mice. However, hemorrhages were not observed and acinar cells were intact in the pancreatic tissues of alloxan induced diabetic control mice. Further, severe inflammatory cell infiltrations in islets were also observed in diabetic control mice. The best amelioration was seen with CS 50mg/100g BW in the islets of Langerhans compared to CS 10 and 20 mg/100g BW (Fig. 2C and 2D). The pancreas sections from CS treated diabetic mice revealed a statistically significant regeneration of islet cells with some hyperplastic islets ($P<0.05$). Further, the CS extract produced a significant increase in the mean profile diameter in large islets compared to the alloxan induced diabetic control mice. Severity of histopathologic lesions was significantly reduced in CS treated group (50mg/100g BW) (Table 4).

Discussion

Antidiabetic activities of CS on mice have been discussed in this article. The blood glucose level of diabetics can be effectively controlled by utilizing

Table 2 Effect of oral administration of *Costus speciosus* on blood glucose, total cholesterol, plasma insulin and C-peptide levels (mean \pm SD), in normal and alloxan-induced diabetic male mice.

Treatments	Glucose (mg/dL)	Cholesterol (mg/dL)	Plasma Insulin (μ U/ml)	C-Peptide (ng/ml)
Control negative	153.50 \pm 52.00 ^c	115.00 \pm 42.04 ^c	18.15 \pm 0.33 ^a	6.38 \pm 0.11 ^a
Control positive (DM)	309.75 \pm 194.76 ^a	210.50 \pm 25.94 ^a	6.9 \pm 0.12 ^d	3.44 \pm 0.29 ^d
DM+ CS (10mg/100g BW)	172.20 \pm 30.80 ^b	141.60 \pm 24.94 ^b	9.33 \pm 0.6 ^c	3.75 \pm 0.66 ^c
DM+ CS (20mg/100 g BW)	166.25 \pm 35.83 ^b	139.25 \pm 42.92 ^b	10.31 \pm 0.73 ^c	3.89 \pm 0.42 ^c
DM+ CS (50mg/100 g BW)	158.00 \pm 36.31 ^c	129.75 \pm 32.99 ^b	14.47 \pm 1.2 ^b	5.35 \pm 0.15 ^b
DM + Metformin (19.5mg /100 g BW)	170.25 \pm 4.84 ^b	133.25 \pm 29.35 ^b	11.28 \pm 1.4 ^b	4.53 \pm 0.48 ^b

^{a-d}Mean values in the same column that do not share a common letter differ significantly ($P < 0.05$)

Table 3 Effect of oral administration of *Costus speciosus* on plasma AST, ALT, LDH, ALP and ACP levels in normal and alloxan induced diabetic male mice.

Treatments	AST (U/dl)	ALT (U/dl)	LDH (U/dl)	ALP (U/dl)	ACP (U/dl)
Control negative	32.6 \pm 1.7 ^d	53.0 \pm 1.2 ^c	1089.2 \pm 12.3 ^d	47.3 \pm 4.7 ^c	13.8 \pm 0.2 ^c
Control positive (DM)	66.4 \pm 3.6 ^a	97.3 \pm 2.6 ^a	1727.2 \pm 22.2 ^a	86.2 \pm 3.9 ^a	27.0 \pm 6.3 ^a
DM+ CS (10mg/100 g BW)	56.7 \pm 1.2 ^b	71.8 \pm 6.3 ^b	1356.2 \pm 25.9 ^b	67.8 \pm 3.7 ^b	18.9 \pm 1.7 ^b
DM+ CS (20mg/100 g BW)	47.8 \pm 3.7 ^b	69.5 \pm 3.9 ^b	1266.4 \pm 23.5 ^c	64.5 \pm 3.2 ^c	17.2 \pm 2.7 ^b
DM+ CS (50mg/100 g BW)	42.2 \pm 6.5 ^c	68.2 \pm 6.7 ^b	1203.2 \pm 12.3 ^c	61.4 \pm 7.5 ^c	17.44 \pm 1.4 ^b
DM + Metformin (19.5mg /100 g BW)	49.9 \pm 2.2 ^b	65.8 \pm 5.7 ^b	1262.2 \pm 17.6 ^c	67.6 \pm 2.0 ^b	18.67 \pm 2.2 ^b

CS: *Costus spiosus*, DM: Diabetes mellitus, AST: Aspartate aminotransferase, ALT: Alanine aminotrasferase, LDH: Lactate dehydrogenase, ALP: Alkaline phosphatase, ACP: Acid phosphatase. ^{a-d}Mean values in the same column that do not share a common letter differ significantly ($P < 0.05$)

Table 4: Severity of histopathological lesions in liver and pancreas in normal and alloxan induced diabetic male mice.

Treatments	Fatty degeneration		Necrosis		Hemorrhages		Cellular infiltration		Fibrosis	
	Liver	Pancreas	Liver	Pancreas	Liver	Pancreas	Liver	Pancreas	Liver	Pancreas
Control negative	-	-	-	-	-	-	-	-	-	-
Control positive (DM)	+++	+++	++	+	++	+++	++	++++	++	+++
DM+ CS (10mg/100 g BW)	+++	++	++	+	++	+++	+	++	+	++
DM+ CS (20 mg/100 g BW)	++	+	+	+	++	++	+	++	+	++
DM+ CS (50 mg/100 g BW)	+	+	+	+	-	+	-	+	+	+
DM + metformin (19.5mg /100 g BW)	++	+	+	-	+	++	+	++	+	+

- normal ; + very mild ; ++ mild; +++ moderate; ++++ severe

currently available antidiabetic agents. The FDA approved anti-diabetic agents are used for the therapy to control blood glucose level [14, 15]. Incorporation of natural antidiabetic preparation is given the privilege to make use of it, as it holds less toxicity and negligible side effects. Almost all the flavonoids have potential for antidiabetic activity, but are limited in usage due to lack of studies on their antidiabetic activities.

In the present study, low dose of alloxan monohydrate (0.65 mg/100g BW) induced type II DM by partial destruction of pancreatic beta cells leading to insufficient insulin production [16]. Dose dependent decrease in the glucose level was observed during the present study in CS treated diabetic mice. This decrease in the level of glucose might be due to insulin like effects of CS or its ingredients which lead either to increase in glucose uptake mechanism possibly by inhibiting the process of gluconeogenesis [17]. Moreover, the CS might also enhance the

regeneration process of β -cells in pancreas [18-21]. Further, CS might inhibit the expression of nitric oxide synthase leading to increase insulin secretion [22].

It has been reported that hypoglycemic activity of herbal medicines might be due to improvement in the effect of insulin on the target cells, stimulating glucose dependent insulin secretion or by enhancing the recovery process for the damaged β -cells of islets of Langerhans in the pancreas of alloxan-induced diabetic rats [24]. Rapid decrease in the enzyme levels in CS treated diabetic mice indicated that CS has the ability to nullify the toxic effects of alloxan. Moreover, an increase in the level of AST, ALT, LDH, ALP and ACP might be due to necrosis of liver tissue. Similar findings have been reported in past indicating liver dysfunction in streptozotocin induced diabetic rats [27, 28]. Therefore, an increase in the activities of these enzymes might be due to the

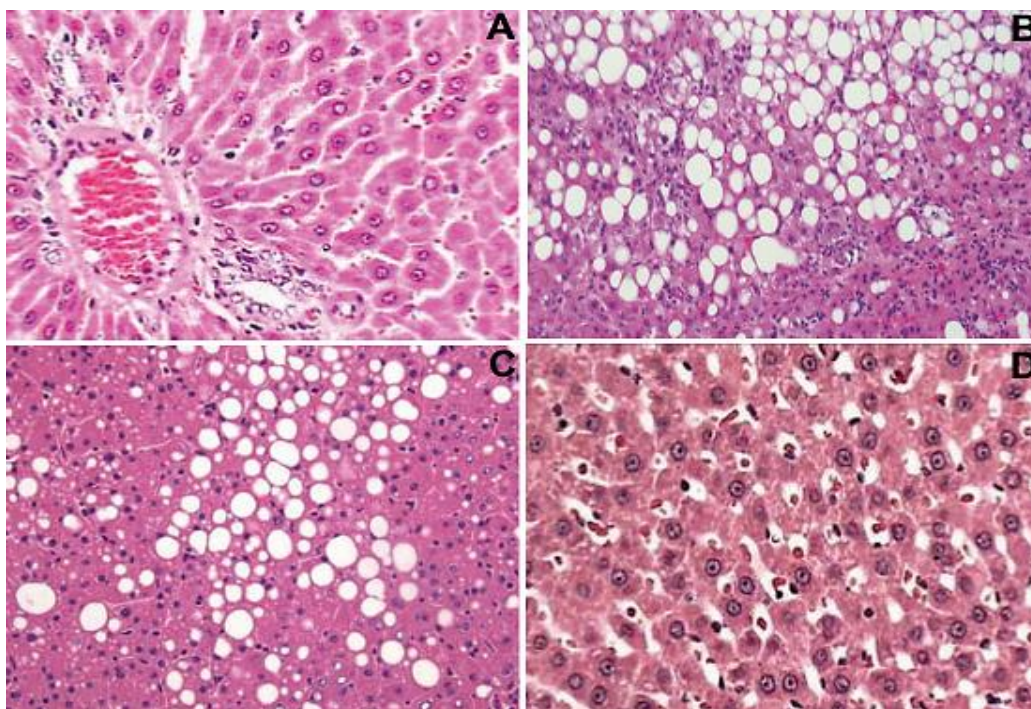


Fig 1 Histological pattern of liver from nondiabetic control mice showing normal appearing of hepatocytes, portal space, sinusoids, and Kupffer cells (A); Histological pattern of liver in untreated diabetic showing severe fatty degeneration, sinusoidal enlargement and interlobular mononuclear inflammatory infiltrate (B); liver of metformin-treated diabetic group showing mild fatty degeneration and mononuclear inflammatory infiltrates (C); liver of CS (50mg/100g BW) treated diabetic group showed normal hepatic architecture which was almost similar to that of the control group (D), (x400).

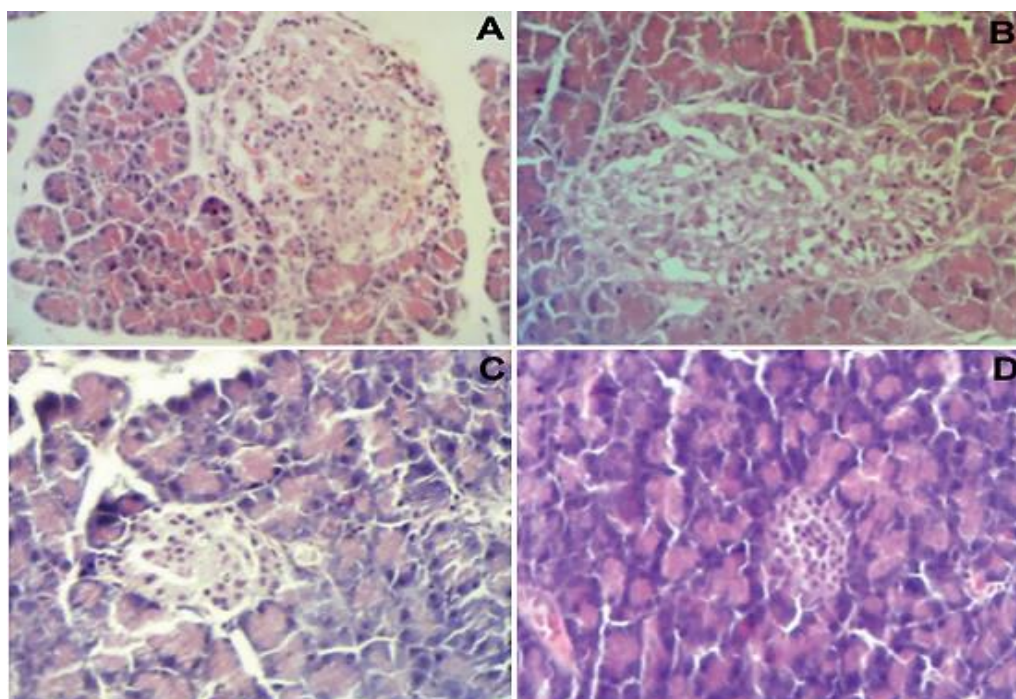


Fig 2 Photomicrographs of histopathology of the pancreatic tissues stained with hematoxylin and eosin. Healthy control mice, islets of Langerhans with normal islet cell population (A); diabetic control mice, islet with few preserved islet cells, fibrosis, and infiltration by inflammatory cells (B); *Costus speciosus* (50mg/100g BW) treated diabetic mice, restoration of pancreatic islet cells with prominent islets (C); metformin treated (19.5mg/100g BW) diabetic mice with mild restoration of islet cells (D).

leakage of these enzymes from the damaged liver tissue to blood circulation indicating the hepatotoxic effect of alloxan. However, we observed that treatment of the diabetic mice with CS resulted in alleviation in liver damage and ultimately leading to decrease in the activity of these enzymes. These findings are in agreement with those obtained by El-Demerdash et al. [29] in rats. Moreover, CS treated mice showed increased levels of insulin and C-peptide, indicating the effect of CS on the regeneration of pancreatic tissue. C-peptides have been reported to have insulin-mimetic effects and can stimulate insulin receptors; leading to increased glycogen synthesis from blood glucose [30-31]. Phytochemical compounds in plants may regulate the enzymes of glycolysis and gluconeogenesis [25]. However, we have not studied the mode of action of these phytochemical agents in the present study; therefore our analysis is based on assumptions.

Abnormalities in lipid profile are considered one of the leading complications in most of the DM cases [26]. Low levels of insulin during DM can result in increased lipase secretion leading to enhanced mobilization of fatty acids [27]. Fatty degeneration was seen during histopathological examination of liver that might be the result of increase fatty acid mobilization in diabetic mice [32, 33]. Regeneration of pancreatic and liver tissue with minimal lesions was observed in CS treated mice. Similarly, the regeneration of pancreatic tissues was observed by Dhanavathy [34] in streptozotocin induced diabetic mice after treatment with plant extract.

In conclusion, oral administration of ethanolic extract of CS to alloxan-induced diabetic mice improved their glucose tolerance, an important finding in the control of diabetes. This suggested that CS is useful in the protection and amelioration of diabetic complications through the enhancement of regeneration of β cells of the islets of Langerhans. Moreover, the present results showed that CS consumption reversed most of the histological changes in the liver and pancreas of the diabetic rats in a dose dependent manner. In addition, the plant extract exerts anti-hyperlipidemic activities in diabetic mice. So, we can say that CS had a significant hepatoprotective role in diabetic rats and offers promising perspectives deserve further investigation. Further studies are needed to define the active agents present and their mode of activity.

Acknowledgement

The authors wish to thank Mahmud Rudini, Dr. Sutyarso and Dr. Nugroho Susanto for their technical help in data analysis and interpretation of results.

References

- [1] Wang J, Teng L, Liu Y, Hu W, Chen W, Hu X, et al. Studies on the antidiabetic and antinephritic activities of *Paecilomyces hepiali* water extract in diet-streptozotocin-induced diabetic Sprague Dawley rats. *J Diabetes Res* 2016; e4368380.
- [2] World Health Organization. Global report on diabetes [Internet]. 2016 [cited 2016 Apr 29]. Available from: <http://apps.who.int/iris/bitstream/10665/204871/1/9789241565257eng.pdf>.
- [3] Alamoudi EF, Khalil WKB, Ghaly IS, Hassan NHA, Ahmed ES. Nanoparticles from of *Costus speciosus* extract improves the antidiabetic and antilipidemic effects against STZ-induced *Diabetes mellitus* in albino rats. *Int J Pharm Sci Rev Res* 2014; 29(1):279–288.
- [4] Taha MA, Ahmed SJ, Rashid KI. Effect of arabidopsis extracts on the status of liver histology of alloxan-induced diabetic mice. *J Nat Sci Res* 2016; 6(6):111–121.
- [5] Attanayake AP, Jayatilaka KAPW, Pathirana C, Mudduwa LKB, Attanayake AP, Jayatilaka KAPW, et al. *Gmelina arborea* Roxb. (Family: *Verbenaceae*) extract upregulates the β -cell regeneration in STZ induced diabetic rats. *J Diabetes Res* 2016; e4513871.
- [6] Revathy J, Abdullah SS, Kumar PS. Antidiabetic Effect of *Costus Speciosus* rhizome extract in alloxan induced albino rats. *J Chem Biochem* 2014; 2(1):13–22.
- [7] Agwaya MS, Vuzi PC, Nandutu AM, Agwaya MS, Vuzi PC, Nandutu AM. Hypoglycemic activity of aqueous root bark extract *Zanthoxylum chalybeum* in alloxan-induced diabetic rats. *J Diabetes Res* 2016; 2016:8727590.
- [8] Obi BC, Okoye TC, Okpashi VE, Igwe CN, Alumanah EO, Obi BC, et al. Comparative study of the antioxidant effects of metformin, glibenclamide, and repaglinide in alloxan-induced diabetic rats. *J Diabetes Res* 2016; 2016:1635361.
- [9] Alagammal M, Agnel RA, Mohan VR. Antidiabetic and antihyperlipidaemic effect of *Polygala javana* DC on alloxan induced diabetic rats. *Int Res J Pharm* 2012; 3:231–234.
- [10] Rani AS, Sulakshana G, Patnaik S. *Costus speciosus*, an antidiabetic plant - Review. *FS J Pharm Res* 2012; 1:52–53.
- [11] Nehete J, Bhatia M, Narkhede M. *In-vitro* Evaluation of antioxidant activity and phenolic content of *costus speciosus* (Koen) J.E. Sm. *Iran J Pharm Res IJPR* 2010; 9(3):271–277.
- [12] Jha MK, Alam MB, Hossain MS, Islam A. In vitro antioxidant and cytotoxic potential of *Costus speciosus* (Koen.) Smith rhizome. *Int J Pharm Sci Res* 2012; 1:138–144.
- [13] Drury RAB, Wallington EA. Preparation and fixation of tissues. In: Carleton HM, Drury RAB, Wallington EA, editors. *Carleton's Histological technique*. Oxford University Press; 1980, p. 41–45.
- [14] Akiyama S, Katsumata S-I, Suzuki K, Ishimi Y, Wu J, Uehara M. Dietary hesperidin exerts hypoglycemic and hypolipidemic effects in streptozotocin-induced marginal type 1 diabetic rats. *J Clin Biochem Nutr* 2010; 46(1):87–92.
- [15] Barwal I, Sood A, Sharma M, Singh B, Yadav SC. Development of stevioside Pluronic-F-68 copolymer based PLA-nanoparticles as an antidiabetic nanomedicine. *Coll Surf B Biointer* 2013; 101:510–516.
- [16] Aybar M, Sanchez-Riera AN, Grau A, Sanchez SS. Hypoglycemic effect of the water extract of *Smilax saponifolia* (yacon) leaves in normal and diabetic rats. *J Ethnopharmacol* 2002; 74:125–132.
- [17] Ali L, Khan AK, Mamun MI, Mosihuzzaman M, Nahar N, Nur-e-Alam M, et al. Studies on hypoglycemic effects of fruit pulp,

- seed, and whole plant of *Momordica charantia* on normal and diabetic model rats. *Planta Med* 1993; 59(5):408–412.
- [18] Shanmugasundaram ER, Gopinath KL, Radha Shanmugasundaram K, Rajendran VM. Possible regeneration of the islets of langerhans in streptozotocin-diabetic rats given *Gymnema sylvestre* leaf extracts. *J Ethnopharmacol* 1990; 30(3):265–279.
- [19] Li WL, Zheng HC, Bukuru J, De Kimpe N. Natural medicines used in the traditional Chinese medical system for therapy of diabetes mellitus. *J Ethnopharmacol* 2004; 92(1):1–21.
- [20] Achrekar S, Kaklij GS, Pote MS, Kelkar SM. Hypoglycemic activity of *Eugenia jambolana* and *Ficus bengalensis*: mechanism of action. *Vivo Athens Greece* 1991; 5(2):143–147.
- [21] Bansal R, Ahmad N, Kidwani JR. Effect of oral administration of *Eugenia jambolana* seeds and chlororopamide on blood glucose level and pancreatic cathapsin B in rats. *Indian J Biochem Biophys* 1981; 18:377–381.
- [22] Gunawardana SC, Head WS, Piston DW. Dimethyl amiloride improves glucose homeostasis in mouse models of type 2 diabetes. *Am J Physiol Endocrinol Metab* 2008; 294(6):E1097–1108.
- [23] Mao-Ying Q-L, Kavelaars A, Krukowski K, Huo X-J, Zhou W, Price TJ, et al. The anti-diabetic drug metformin protects against chemotherapy-induced peripheral neuropathy in a mouse model. *PLOS One* 2014; 9(6):e100701.
- [24] Ayodhya S, Kusum S, Anjali S. Hypoglycemic activity of different extracts of various herbal plants. *International J Res Ayurveda Pharm* 2010; 1(1):212–224.
- [25] Arya A, Cheah SC, Looi CY, Taha H, Mustafa MR, Mohd MA. The methanolic fraction of *Centratherum anthelminticum* seed downregulates pro-inflammatory cytokines, oxidative stress, and hyperglycemia in STZ-nicotinamide-induced type 2 diabetic rats. *Food Chem Toxicol* 2012; 50(11):4209–4220.
- [26] Ravi K, Rajasekaran S, Subramanian S. Antihyperlipidemic effect of *Eugenia jambolana* seed kernel on streptozotocin-induced diabetes in rats. *Food Chem Toxicol* 2005; 43(9):1433–1439.
- [27] Soltani N, Keshavarz M, Dehpour AR. Effect of oral magnesium sulfate administration on blood pressure and lipid profile in streptozotocin diabetic rat. *Eur J Pharmacol* 2007; 560(2–3):201–205.
- [28] Murali B, Upadhyaya UM, Goyal RK. Effect of chronic treatment with *Enicostemma littorale* in non-insulin-dependent diabetic (NIDDM) rats. *J Ethnopharmacol* 2002; 81(2):199–204.
- [29] El-Demerdash FM, Yousef MI, El-Naga NIA. Biochemical study on the hypoglycemic effects of onion and garlic in alloxan-induced diabetic rats. *Food Chem Toxicol* 2005; 43(1):57–63.
- [30] Gomathi, Ganesan Ravikumar, Manokaran Kalaiselvi, Kanakasabapathi Devaki and Chandrasekar Uma. Efficacy of *Evolvulus alsinoides* (L.) on insulin and antioxidants activity in pancreas of streptozotocin induced diabetic rats. *J Diabet Metab Disord* 2013; 12:39.
- [31] Senthilkumar G, Subramanian SP. Biochemical studies on the effect of *Terminalia chebula* on the levels of glycoproteins in streptozotocin induced experimental diabetes in rats. *J Appl Biomed* 2008; 6:105–115.
- [32] Eliza J, Rajalakshmi M, Ignacimuthu SJ, Daisy P. Normalizing effects of *Costus speciosus* rhizome crude extracts and its fractions on diabetic complications in STZ-induced diabetic rats. *Med Chem Res* 2010; 20(7):1111–1118.
- [33] Girgis S, Shoman T, Kassem S, Ezz El-Din A, Abdel-Aziz K. Potential Protective Effect of *Costus speciosus* or its nanoparticles on streptozotocin-induced genotoxicity and histopathological alterations in rats. *J Nutr Food Sci* 2015; S3(002).
- [34] Dhanavathy G. Immunohistochemistry, histopathology, and biomarker studies of swertiamarin, a secoiridoid glycoside, prevents and protects streptozotocin-induced β -cell damage in Wistar rat pancreas. *J Endocrinol Invest* 2015; 38(6):669–684.

● 19% Overall Similarity

Top sources found in the following databases:

- 10% Internet database
- Crossref database
- 9% Submitted Works database
- 16% Publications database
- Crossref Posted Content database

TOP SOURCES

The sources with the highest number of matches within the submission. Overlapping sources will not be displayed.

1	mdpi.com	Internet	<1%
2	Eliza, J.. "Normo-glycemic and hypolipidemic effect of costunolide isol..."	Crossref	<1%
3	frontiersin.org	Internet	<1%
4	Sachin L. Badole, Shweta N. Shah, Naimesh M. Patel, Prasad A. Thakur...	Crossref	<1%
5	Anoja Priyadarshani Attanayake, Kamani Ayoma Perera Wijewardana J...	Crossref	<1%
6	Juan Wang, Wenji Hu, Lanzhou Li, Xinping Huang, Yange Liu, Di Wang, ...	Crossref	<1%
7	Subash-Babu, P.. "Insulin secretagogue effect of Ichnocarpus frutesce..."	Crossref	<1%
8	impactfactor.org	Internet	<1%

9	The University of Dodoma on 2018-11-06	<1%
	Submitted works	
10	ijpsr.com	<1%
	Internet	
11	Ramya Devi KT, Nageswaran Sivalingam. "Cichorium intybus attenuate...	<1%
	Crossref	
12	iiste.org	<1%
	Internet	
13	Letícia Fuganti CAMPOS, Eliane TAGLIARI, Thais Andrade Costa CASA...	<1%
	Crossref	
14	Shahid Akbar. "Handbook of 200 Medicinal Plants", Springer Science a...	<1%
	Crossref	
15	vetarhiv.vef.unizg.hr	<1%
	Internet	
16	"Abstracts", Diabetologia, 2005	<1%
	Crossref	
17	Bonaventure Chukwunonso Obi, Theophine Chinwuba Okoye, Victor Es...	<1%
	Crossref	
18	T. K. Lim. "Edible Medicinal And Non-Medicinal Plants", Springer Scien...	<1%
	Crossref	
19	baadalsg.inflibnet.ac.in	<1%
	Internet	
20	innovareacademics.in	<1%
	Internet	

- 21 M Harada. "Unusual hyperbilirubinemia associated with bacterial pneu... <1%
Crossref
-
- 22 docsdrive.com <1%
Internet
-
- 23 services.rmh.med.sa <1%
Internet
-
- 24 Baby Joseph, D Jini. "Antidiabetic effects of Momordica charantia (bitt... <1%
Crossref
-
- 25 G.P. Senthilkumar, S. Subramanian. " Evaluation of Antioxidant Potenti... <1%
Crossref
-
- 26 Institute of Graduate Studies, UiTM on 2015-05-17 <1%
Submitted works
-
- 27 Juan Wang, Lirong Teng, Yange Liu, Wenji Hu, Wenqi Chen, Xi Hu, Ying... <1%
Crossref
-
- 28 María José Tolosa, Sara Rocío Chuguransky, Claudia Sedlinsky, León S... <1%
Crossref
-
- 29 Michelo Banda, James Nyirenda, Kaampwe Muzandu, Gibson Sijumbila... <1%
Crossref
-
- 30 N. Gaumet, M.J. Seibel, V. Coxam, M.J. Davicco, P. Lebecque, J.P. Barl... <1%
Crossref
-
- 31 annals.edu.sg <1%
Internet
-
- 32 drive.uqu.edu.sa <1%
Internet

33	helda.helsinki.fi	Internet	<1%
34	ijpjournal.com	Internet	<1%
35	J. Eliza, M. Rajalakshmi, S. J. Ignacimuthu, P. Daisy. "Normalizing effe...	Crossref	<1%
36	Ramasamy Chandramohan, Leelavinothan Pari. "Anti-inflammatory effe...	Crossref	<1%
37	University of Hong Kong on 2005-05-12	Submitted works	<1%
38	Www.dovepress.com	Internet	<1%
39	interscience.org.uk	Internet	<1%
40	ircmj.com	Internet	<1%
41	journal.ac	Internet	<1%
42	mail.scialert.net	Internet	<1%
43	s3.amazonaws.com	Internet	<1%
44	phcogj.com	Internet	<1%

45	Edible Medicinal and Non Medicinal Plants, 2015.	<1%
	Crossref	
46	Eliza, J.. "Antidiabetic and antilipidemic effect of eremanthin from Cost...	<1%
	Crossref	
47	Savitribai Phule Pune University on 2015-12-07	<1%
	Submitted works	
48	core.ac.uk	<1%
	Internet	
49	jdmdonline.biomedcentral.com	<1%
	Internet	
50	Biswapriya B. Misra, Satyahari Dey. "Evaluation of in vivo anti-hypergly...	<1%
	Crossref	
51	Duraisamy Gomathi, Ganesan Ravikumar, Manokaran Kalaiselvi, Kanak...	<1%
	Crossref	
52	Md Ashraful Alam, Riaz Uddin, Nusrat Subhan, Md Mahbubur Rahman, ...	<1%
	Crossref	
53	Subramoniam, Appian. "References", Plants with Anti-Diabetes Mellitu...	<1%
	Crossref	
54	Universiti Teknologi MARA on 2018-08-17	<1%
	Submitted works	
55	University of Zululand on 2016-02-19	<1%
	Submitted works	
56	VIT University on 2010-12-26	<1%
	Submitted works	

- 57 Willy J. Malaisse, Yannick Scholler. "Mathematical modelling of chang... <1%
Crossref
-
- 58 "Taurine 10", Springer Science and Business Media LLC, 2017 <1%
Crossref
-
- 59 Duaa Bakhshwin, Khadija Abdul Jalil Faddladdeen, Soad Shaker Ali, Sa... <1%
Crossref
-
- 60 Gauhati University on 2014-10-08 <1%
Submitted works
-
- 61 Junzo Kamei, Akiyoshi Saitoh. "Role of spleen or spleen products in th... <1%
Crossref
-
- 62 Parichart Toejing, Nuntawat Khat-Udomkiri, Jannarong Intakhad, Sasit... <1%
Crossref
-
- 63 Rowan University on 2014-01-26 <1%
Submitted works
-
- 64 Universiti Teknologi MARA on 2019-01-23 <1%
Submitted works
-
- 65 E L Widiastuti, B K Ardiansyah, N Nurcahyani, A Silvinia. "Antidiabetic P... <1%
Crossref
-
- 66 King Saud University on 2016-06-13 <1%
Submitted works
-
- 67 tessera.spandidos-publications.com <1%
Internet

● Excluded from Similarity Report

- Bibliographic material
- Manually excluded text blocks
- Manually excluded sources

EXCLUDED SOURCES

thesciencepublishers.com	73%
Internet	
Higher Education Commission Pakistan on 2016-05-24	40%
Submitted works	
123dok.com	21%
Internet	
ncbi.nlm.nih.gov	10%
Internet	
id.123dok.com	10%
Internet	
hindawi.com	9%
Internet	
repository.lppm.unila.ac.id	4%
Internet	
"Hypoglycemic Activity of Aqueous Root Bark Extract	4%
Internet Zanthoxylu...	
Moses Solomon Agwaya, Peter California Vuzi, Agnes Masawi Nandutu. " Hyp...	3%
Crossref	
jcbnet.info	3%
Internet	

Amanda Natália Lucchesi, Lucas Langoni Cassettari, César Tadeu Spadella. "...	3%
Crossref	
mafiadoc.com	3%
Internet	
P. Subash Babu, S. Prabuseenivasan, S. Ignacimuthu. "Cinnamaldehyde—A po...	3%
Crossref	
globalresearchonline.net	3%
Internet	
James Eliza, Pitchai Daisy, Savarimuthu Ignacimuthu, Veeramuthu Duraipandi...	3%
Crossref	
biotech-asia.org	2%
Internet	
biotech-asia.org	2%
Internet	
Anoja Priyadarshani Attanayake, Kamani Ayoma Perera Wijewardana Jayatila...	2%
Crossref	
E L Widiastuti, I A Khairani. " Antioxidant effect of taurine and macroalgae (s...	2%
Crossref	
Subash Babu, P.. "Cinnamaldehyde-A potential antidiabetic agent", Phytomedi...	2%
Crossref	
downloads.hindawi.com	2%
Internet	
science.gov	2%
Internet	

Anoja Priyadarshani Attanayake, Kamani Ayoma Perera Wijewardana Jayatila...	2%
Internet	
cyberleninka.org	2%
Internet	
link.springer.com	2%
Internet	
es.scribd.com	2%
Internet	
bioinfopublication.org	2%
Internet	
Anoja Priyadarshani Attanayake, Kamani Ayoma Perera Wijewardana Jayatila...	1%
Crossref	
Northern Caribbean University on 2021-04-07	1%
Submitted works	
academic.oup.com	1%
Internet	
omicsonline.org	1%
Internet	
idoc.pub	<1%
Internet	
journals.plos.org	<1%
Internet	
sciepub.com	<1%
Internet	

hrcak.srce.hr <1%
Internet

"Studies on the Antidiabetic and Antinephritic Activities of Paecilomyces hepi... <1%
Internet

ijappjournal.com <1%
Internet

life.dysona.org <1%
Internet

jembung.ga <1%
Internet

phytojournal.com <1%
Internet

S. Mohan, L. Nandhakumar. "Role of various flavonoids: Hypotheses on novel ... <1%
Crossref

spandidos-publications.com <1%
Internet

EXCLUDED TEXT BLOCKS

patients by bringing huge pressure to society and public health
www.ncbi.nlm.nih.gov

Diabetes mellitus (DM) is one of the most common metabolic disorders worldwide
www.ncbi.nlm.nih.gov

Nearly 2.2% of
www.ncbi.nlm.nih.gov

as the standard drug were administered orally using agavage to

Anoja Priyadarshani Attanayake, Kamani Ayoma Perera Wijewardana Jayatilaka, Chitra Pathirana, Lakmini K...

Persistent hyperglycemia in

www.ncbi.nlm.nih.gov

to insulin resistance [3

www.ncbi.nlm.nih.gov

1]. The global prevalenceof

Anoja Priyadarshani Attanayake, Kamani Ayoma Perera Wijewardana Jayatilaka, Chitra Pathirana, Lakmini K...

Every ten seconds a person dies from

Anoja Priyadarshani Attanayake, Kamani Ayoma Perera Wijewardana Jayatilaka, Chitra Pathirana, Lakmini K...

Our study showed that oral administration of

globalresearchonline.net

are considered an important source for novel drugs due to the potent efficacy with ...

mafiadoc.com

were approved by the University Ethics Committee on the use of laboratory animals ...

mafiadoc.com

Plant material The plant material for the present investigation was collected from th...

www.biotech-asia.org

Soxhlet apparatus is a method to extract a soluble fraction from a solid medium. T...

www.biotech-asia.org

Further, there was a definite reduction in the number of islets in diabetic

Anoja Priyadarshani Attanayake, Kamani Ayoma Perera Wijewardana Jayatilaka, Chitra Pathirana, Lakmini K...

in the healthy

Anoja Priyadarshani Attanayake, Kamani Ayoma Perera Wijewardana Jayatilaka, Chitra Pathirana, Lakmini K...

Administration of

James Eliza, Pitchai Daisy, Savarimuthu Ignacimuthu, Veeramuthu Duraipandiyan. "Normo-glycemic and hyp...

Ameliorative effects of *Costus speciosus* on biochemical and histopathological ch...

University of Zululand on 2017-11-13

The activities of plasma enzymes AST, ALT, LDH, ALP and ACP

Eliza, J.. "Normo-glycemic and hypolipidemic effect of costunolide isolated from *Costus speciosus* (Koen ...

The blood glucose level of diabetics can be

s3.amazonaws.com

Varying concentrations of isopropyl alcohol (70%, 80%, 90%, 96%, and 100%) were ...

vetarhiv.vef.unizg.hr

oral administration of

Eliza, J.. "Normo-glycemic and hypolipidemic effect of costunolide isolated from *Costus speciosus* (Koen ...

currently available antidiabetic agents. The FDA approved anti-diabetic agents

s3.amazonaws.com

Recently, antidiabetic agents of plant origin, such as *Costus speciosus*

idoc.pub

AST (U/dl) ALT (U/dl) LDH (U/dl) ALP (U/dl) ACP (U/dl)

Eliza, J.. "Normo-glycemic and hypolipidemic effect of costunolide isolated from *Costus speciosus* (Koen ...

in the same column that do not share a common letter differ significantly ($P < 0.05$...

www.ijappjournal.com

histopathology of the pancreatic

Ramya Devi KT, Nageswaran Sivalingam. "Cichorium intybus attenuates Streptozotocin-induced pancreatic ...

of natural antidiabetic preparation is given

s3.amazonaws.com

an increase in the

Eliza, J.. "Normo-glycemic and hypolipidemic effect of costunolide isolated from *Costus speciosus* (Koen ...

surrounded by sinusoids and

Seetur R. Pradeep, Krishnapura Srinivasan. " Amelioration of oxidative stress by dietary fenugreek (- L.) se...

although most of them

Juan Wang, Lirong Teng, Yange Liu, Wenji Hu, Wenqi Chen, Xi Hu, Yingwu Wang, Di Wang. " Studies on the A...

untreated diabetic

Anoja Priyadarshani Attanayake, Kamani Ayoma Perera Wijewardana Jayatilaka, Lakmini Kumari Boralugod...

pancreas) were

www.phcogj.com

Additionally, some oral antihyperglycemic agents display various adverse effects

Juan Wang, Lirong Teng, Yange Liu, Wenji Hu, Wenqi Chen, Xi Hu, Yingwu Wang, Di Wang. " Studies on the A...

one-way analysis of variance (ANOVA) followed by

"Taurine 10", Springer Science and Business Media LLC, 2017

and a progressive loss of general organ structure

jdmdonline.biomedcentral.com

SPSS Inc., Chicago, Illinois, USA

Fatih AKDEMİR, Önder KAYIGİL, Oktay ALGIN, Ali İpek. "The Role of Computerized Tomography Angiography...

with a fasting plasma glucose

Universiti Teknologi MARA on 2019-01-23

Metformin, a biguanide antihyperglycaemic agent, is widely used

innovareacademics.in

ameliorative effects of *Costus speciosus*

University of Zululand on 2017-11-13