

PAPER NAME

**Cytotoxic activity of methanol extraction of Avicennia marina and taurin in the HeLa cancer.pdf**

AUTHOR

**Endang L Widiatuti**

WORD COUNT

**4230 Words**

CHARACTER COUNT

**21517 Characters**

PAGE COUNT

**11 Pages**

FILE SIZE

**703.6KB**

SUBMISSION DATE

**Oct 20, 2022 5:19 PM GMT+7**

REPORT DATE

**Oct 20, 2022 5:20 PM GMT+7**

### ● 18% Overall Similarity

The combined total of all matches, including overlapping sources, for each database.

- 14% Internet database
- 12% Publications database
- Crossref database
- Crossref Posted Content database
- 10% Submitted Works database

### ● Excluded from Similarity Report

- Bibliographic material
- Manually excluded sources
- Manually excluded text blocks

PAPER • OPEN ACCESS

## Cytotoxic activity of methanol extraction of *Avicennia marina* and taurin in the *HeLa* cancer cells

To cite this article: S Andriani *et al* 2021 *J. Phys.: Conf. Ser.* **1751** 012045

View the [article online](#) for updates and enhancements.

### You may also like

23 [Selective Polishing of Amorphous Silicon Carbonitride \( \$\alpha\$ -SiCN\) Films Over Silicon](#)

2 [Oxide and Silicon Nitride Films for Hardmask Applications](#)  
Akshay Gowda, Sridevi Alety, Charith K. Ranaweera *et al.*

- [Taurine Intakes Increase Superoxide Dismutase Activity in Knee Osteoarthritis](#)

11 [A E W Saraswati, D Sunardi, A M T Lubis \*et al.\*](#)

- [Caffeine and taurine slow down water molecules](#)

2 [Albert J Smit, Eliane P van Dam, Roberto Cota \*et al.\*](#)



The Electrochemical Society  
Advancing solid state & electrochemical science & technology

243rd ECS Meeting with SOFC-XVIII

**More than 50 symposia are available!**

Present your research and accelerate science

Boston, MA • May 28 – June 2, 2023

[Learn more and submit!](#)

## Cytotoxic activity of methanol extraction of *Avicennia marina* and taurin in the *HeLa* cancer cells

S Andriani<sup>1</sup>), L L Widiastuti<sup>1\*</sup>), N Nurcahyani<sup>3</sup>), E rosa<sup>4</sup>), H Busman<sup>5</sup>

<sup>1,2,3,4,5</sup> Fakultas Matematika dan Ilmu Pengetahuan Alam, Universitas Lampung

**email:** silviaandriani12@gmail.com<sup>1</sup>, elwidi@yahoo.com<sup>2</sup>, nuning.nurcahyani@fmipa.unila.ac.id<sup>3</sup>, emantisrosa@gmail.com<sup>4</sup>, hendri\_busman@yahoo.com<sup>5</sup>

\*Corresponden: Email : [elwidi@yahoo.com](mailto:elwidi@yahoo.com)

**Abstract:** The aim of study was to determine any anticancer potential from *Avicennia marina* leaf extract compare to taurine on cytotoxic and anti-proliferation activities against *HeLa* cervical cancer cell line by using the MTT method (3-(4, 5-dimethylthiazol-2-yl) - 2, 5-diphenyltetrazolium bromide). The results indicated that methanol extraction of *A. marina* leaf as well as taurine did have cytotoxic and anti-proliferation effects on *HeLa* cell line with IC50 values of 321 ppm and 603 ppm 1000 ppm. While the doubling time value for anti-proliferation of *A. marina* leaf methanol extraction and taurine showed higher values than the control group (72.19 hours).

**Keywords :** *Avicennia marina*, taurine, cytotoxic, cytotoxic and anti-proliferative, *HeLa cells*

### 1. INTRODUCTION

The incidence of diseases of Indonesia is ranked 8th in Southeast Asia, and 23rd in the Asian Continent [1]. One of the diseases is cervical cancer which mostly caused by *Human Papillomavirus* (HPV 18) [2]. Currently cervical cancer is the second leading cause of mortality in women in the world with a new incidence of 570,000 new cases in 2018 representing 6.6% of all cancers affecting women [3]. Various attempts have been made to prevent and cure cancer. However, current cancer treatments are still not effective in healing, some are caused by using chemical drugs which only temporarily and cannot resist selective target cells, on the other hand, causes some damage on normal body cells. Efforts to find alternative natural cancer drugs is needed with high effect on target cells but not for normal cells by exploring natural sources, one of which is exploring potential drugs derived from of mangrove plants, namely *Avicennia marina*.

*Avicennia marina* is a type of mangrove plants in which with other mangrove plants have been widely used as traditional medicine in many different part of the world. *A. marina* belongs to Acanthaceae family with a height of 14 m and a specialized root structure known as pneumatophores. This *A. marina* is known to contain various bioactive compounds including alkaloids, saponins, triterpenoids, glycosides, tannins, flavonoids which act as drugs and high antioxidants [4]. Other studies also indicated that *A.marina* leaves have the potential to be



developed as phytopharmaca as well as other Avicennia plants [5, 6]. Therefore, in this study we aimed to investigate its function on *HeLa* cervical cancer cell lines compared to those of taurine.

On the other hand, Taurine, which part of free amino acids, known with numerous benefits to human health [7]. Taurine is also indicated to have the ability of antioxidants to prevent oxidative damage to the effects of paraquat induction [8]. Taurine also can be widely found in marine animals such as fish, squid, clams, snails and oysters.

## 2 METHODS

### 2.1 Sample Preparation

*A. marina* leaves was obtained from the Lampung Mangrove Center (LMC) in Labuhan Maringgai of Lampung Province, Indonesia. *A. marina* leaves extraction was carried out at the Biomolecular Laboratory of Biology, Faculty of Mathematics and Natural Sciences, University of Lampung. *A. marina* leaves dried in an oven at 30 °C, then ground to obtain simplicia powder. Maceration was applied to the simplicia powder by using a methanol solvent 1:10 for 24 hours followed by filtration using a bucher funnel and filter paper. The filtrate then was evaporated using a rotary evaporator at 50 °C until an extract was obtained in the form of a paste [9]. Cytotoxic and antiproliferative testing of *HeLa* cells was carried out at the Cell Culture and Cytogenetic Laboratory, Faculty of Medicine, Padjadjaran University [10].

### 2.2 HeLa Cell Culture Media Preparation

The media was made by dissolving 5 ml of 10% FBS solution, and 0.5 ml Pensterp (Penicillin-Streptomycin) which has been thawed in a sterile water bottle and then added with 50 ml of RPMI 1640 (Rosewell Park Memorial Institute)[10].

### 2.3 Harvesting and Calculation of HeLa Cell Count

Cells were transferred into a conical tube and 3 ml of media were added and centrifuged at 1500 rpm for 5 minutes. A total of 10 µl of mixed cells and trypan blue was used to calculate the number of cells by using hemocytometer. Living cells were marked with a clear color while those that were not blue. Calculation with a hemocytometer was done by selecting 4 counting rooms. Following was a series of calculations for the number of cells to be cultured [10]

Align Cell	= $\frac{\text{the cell count for all rooms is calculated}}{4}$
Number of cells count / ml	= Mean cell x dilution factor x 10 <sup>4</sup>
Total number of cell needed	= total of well x total of sel well
Transfer volume sel	= $\frac{\text{total number of sel needed}}{\text{number of cell count/ml}}$

### 2.4 Preparation for testing of the extract solution

A stock solution was made by dissolving each extract as much as 10 mg with 1 ml of 1% dimethyl sulfoxide (DMSO), while for taurine as much as 10 mg dissolved with 1 ml of distilled water. The stock solution was then diluted again to a series of concentrations of 125 ppm, 100 ppm, 75 ppm, 50 ppm and 25 ppm. *A. marina* leaf extract solution and taurine in various levels then were tested on *HeLa* culture cells.

### 2.5 Cytotoxic test by using MTT (3-(4,5-dimethylthiazol-2-yl)-2,5-diphenyl tetrazolium bromide)

Cells that have been cultured in a well plate for 24 hours were removed from the incubator then the culture media were removed and the cells were rinsed with phosphate buffer saline (PBS). Each well was then given each extract and taurine with a predetermined concentration and incubated again for 24 hours. The test solution was then discarded, and the wells were rinsed with a phosphate buffer saline (PBS) solution. To the well was added 10  $\mu$ l MTT (3-(4,5-dimethylthiazol-2-yl)-2,5-diphenyl tetrazolium bromide) with a concentration of 5 mg / ml phosphate buffer saline (PBS) then incubated again for 2 hours at 37 °C in a CO<sub>2</sub> incubator. Living cells would metabolize MTT (3-(4,5-Dimethylthiazol-2-yl)-2,5-Diphenyl Tetrazolium bromide) to formazan giving purple color. The MTT reaction (3-(4,5-dimethylthiazol-2-yl)-2,5-diphenyl tetrazolium bromide) was stopped with 100% dimethyl sulfoxide (DMSO) stopper reagent as much as 100  $\mu$ l per well. The uptake was then read with an ELISA reader at a wavelength of 550 nm [12]

### 2.6 Antiproliferative test by using MTT (3-(4,5-dimethylthiazol-2-yl)-2,5-diphenyl tetrazolium bromide)

Cells that had been cultured in hourly well plates were given 100  $\mu$ l extracts and taurine with 125 concentration series, respectively; 100; 75; 50; and 25 ppm. Sampling was carried out for incubating with different times, namely, 24 hours, 48 hours, and 72 hours at 37 °C in a CO<sub>2</sub> incubator. The absorbance of each treatment was measured with a wavelength ELISA reader 550 nm. Then a statistical analysis was performed to determine the difference in the number of living cells at different incubation times [11]

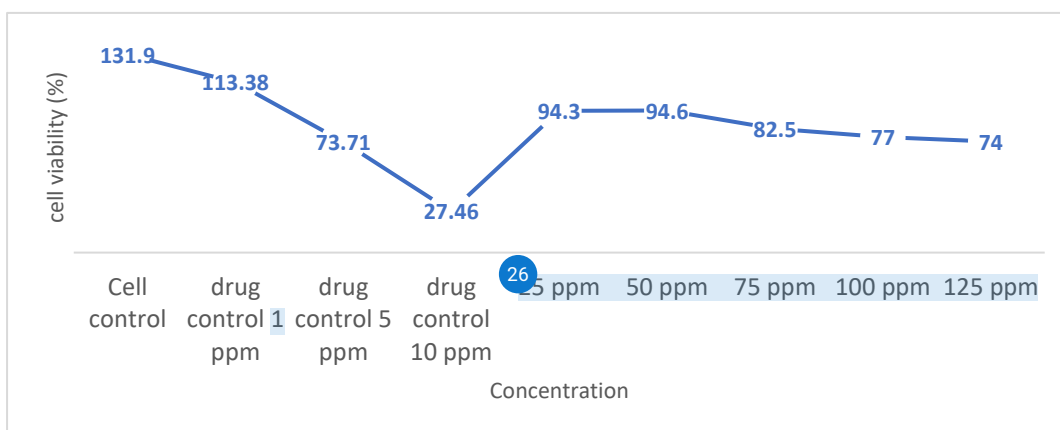
### 2.7 Data Analysis

Cytotoxic tests on *HeLa* cancer cells were carried out using probit analysis to determine the IC<sub>50</sub> value of each extract. The percentage of cell viability was obtained by the following formula [12]. Analysis of antiproliferative test for the doubling time value was obtained from the linear regression equation between incubation time vs. log number of living cells. To determine the effect of concentration on the average number of living cells, a statistical analysis of the One Way ANOVA test with SPSS was performed at a 95% confidence level followed by the Least Significant Difference (LSD) test at 5%.

## 3. RESULTS

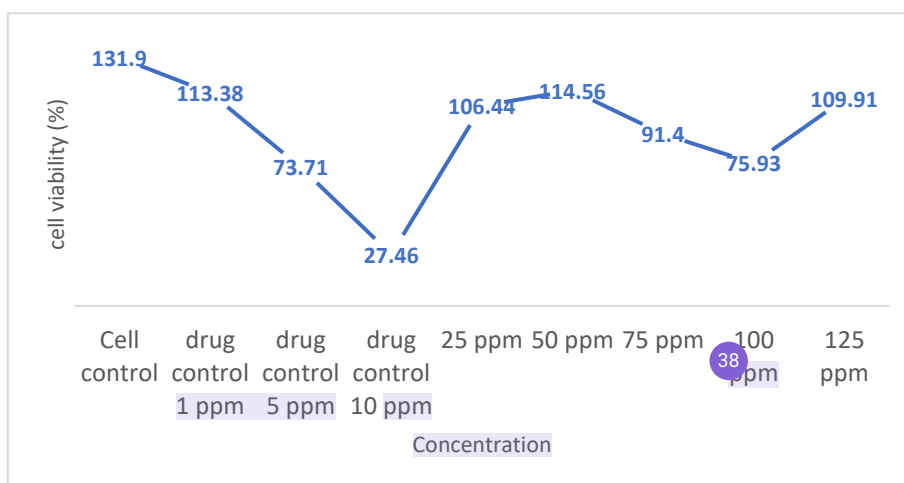
### 3.1 Cytotoxic Test

Based on cytotoxic tests that have been carried out with *A. marina* and taurine leaf extracts against *HeLa* cervical cancer cells, it was obtained that the relationship of extract concentration with cell viability (%) which could be seen in Figure 1, Figure 2 and Figure 3. To understand the cytotoxic effect of the extract and taurine, Doxorubicin as commonly used for cancer drug was applied with 1.5 and 10 ppm (data for doxorubicin and taurine was shared with Widiastuti *et al.*, 2020 unpublished).



**Figure 1.** Effect of *A. marina* leaf extract on *HeLa* cell viability (%)

The result indicated that *A. marina* leaf extract with a concentration of 125 ppm showed the lowest viability percentage of 74 % among other concentrations and cell control. This concentration was almost close to those given with Doxorubicin (commonly used for cancer treatment) as much as 5 ppm.



**Figure 2.** Effect of taurine on *HeLa* cell viability (%)

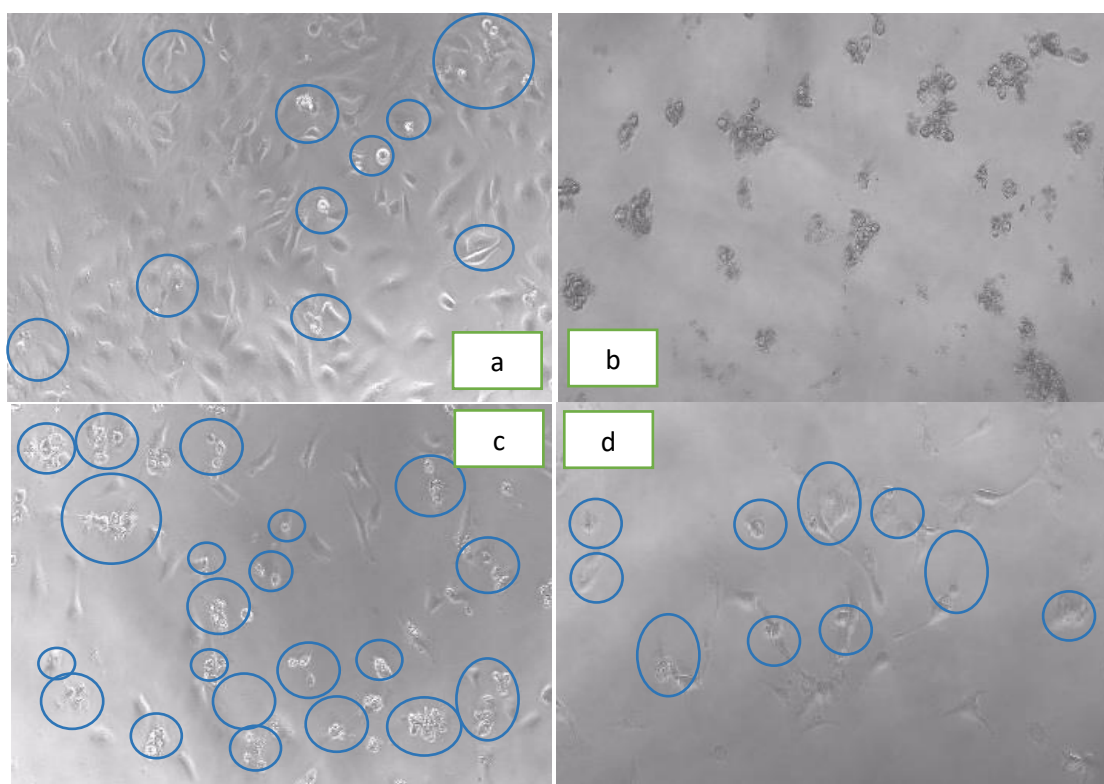
Similar to those, given Taurine treatment also showed the lowest cell viability percentage at a concentration of 100 ppm which was indicated for 75.93%, from which the percentage of cell inhibition was 24.07%. Similar to those in *A. marina* extract, this concentration of taurine reduced the viability of the cells indicated by those given doxorubicin at 5 ppm.

The effect of the *A. marina* extract as well taurine at different concentration on cytotoxic activity by looking at the IC<sub>50</sub> values could be seen in Table 1 as followed. The IC<sub>50</sub> against of *A. marina* lied in 321 ppm and taurine was in 603 ppm while cancer drug, doxorubicin, was in 12.35 ppm.

Tabel 1. Cytotoxic activity of *A. marina* and Taurine on *HeLa* cell line (IC<sub>50</sub> value)

Compound	Concentration (ppm)	Cell Viability (%)	IC <sub>50</sub> (ppm)
<i>A. marina</i>	25	94.3	321
	50	94.6	
	75	82.5	
	100	77	
	125	74	
Taurin	25	106.44	603
	50	114.56	
	75	91.4	
	100	75.93	
	125	109.91	
<i>Doxorubicin</i>	1	113.38	12.35
	5	73.71	
	10	27.46	

The *HeLa* cells morphology from different treatment groups could be seen in Figure 3. Some apoptotic cells indicated with shrinking and irregular shape, while the *HeLa* cell shape was polygonal and attaching to the matrix. Criteria for a cytotoxic activity for crude extracts according to the American National Cancer Institute (NCI) are IC<sub>50</sub> <30 µg/ml [13].



**Figure 3.** The appearance of *HeLa* cell morphology in cell control (a), drug control with doxorubicin (b), 75 ppm concentration *A. marina* methanol extract treatment (c), 100 ppm concentration taurine treatment (d). Note: ○ : apoptotic cells

The doubling time of the *HeLa* Cell line with different treatment groups could be seen in Table 2. Doubling time was determined to understand how much time was needed for the culture cells to increase their number or to proliferate.

Tabel 2. *Doubling Time* of *A. marina* and Taurine on *HeLa* cell line

Treatment groups	Concentration (ppm)	Incubation time line equation and log of cell count	Slope	Doubling Time (h) value
<i>A. marina</i>	25	0.0721x + 4.1948	0.0721	562
	50	0.0348x + 4.2329	0.0348	1055
	75	0.0312x + 4.1683	0.0312	1384
	100	0.0262x + 4.1457	0.0262	1734
	125	0.0157x + 4.1368	0.0157	2950
Taurin	25	0.0014x+4.2937	0.0014	218
	50	0.001x + 4.3142	0.0010	285
	75	0.0013x+4.2752	0.0013	249
	100	0.0004x +4.259	0.0004	852
	125	0.0016x+4.2878	0.0016	195
Control	0	0.0041x + 4.304	0.0041	72.19
<i>Doxorubicin</i>	1	-0.0037x+4.3688	-0.0037	-
	5	-0.0187x +4.462	-0.0187	-
	10	-0.0208x+4.2854	-0.0208	-

Note: Cell control slope values = 0.0041

The doubling time of *A. marina* leaf extract indicated a positive correlation with the concentration of the extract, the greater the concentration of the extract the longer the doubling time. The doubling time values of the drug treatment (doxorubicin) could not be obtained, this related with negative value of the slope in the linear regression equation, presumably all the *HeLa* cells died or no proliferation occurred. Meanwhile, those treatment groups given taurine indicated their doubling time value was higher than the control groups. Therefore, both extract of *A. marina* and taurine were able to interrupt the proliferation of *HeLa* cervical cancer cells.

In order to elucidate how far the interruption of the *A. marina* extract and taurine on the *HeLa* cervical cancer cell line, determination of the number of surviving cells then was calculated and could be seen in Table 3 as followed.

The number of surviving *HeLa* cells varied for both treatment groups and from 24 hours up to 72 hours of observation time. The number of surviving cells decreased as the concentration of extract and taurine increased.



Tabel 3. Effect of *A. marina* and Taurine against average number of surviving cells

Treatment Groups	Concentration (ppm)	Number of living cells ( x 1000 cells)		
		24 hours	48 hours	72 hours
Avicennia	25	18.9±1.48 <sup>a</sup>	21.0±1.30 <sup>a</sup>	26.3±0.35 <sup>a</sup>
	50	18.9±0.79 <sup>a</sup>	19.2±0.72 <sup>a</sup>	22.2±0.66 <sup>b</sup>
	75	16.5±0.60 <sup>ab</sup>	15.6±0.92 <sup>b</sup>	19.1±0.55 <sup>c</sup>
	100	15.4±0.30 <sup>b</sup>	14.7±1.21 <sup>b</sup>	17.4±0.49 <sup>d</sup>
	125	15.0±1.34 <sup>b</sup>	13.3±0.30 <sup>b</sup>	16.1±0.29 <sup>d</sup>
Taurin	25	21.3±0.30 <sup>ab</sup>	21.8±1.42	25.7±0.60 <sup>ab</sup>
	50	22.9±1.48 <sup>a</sup>	22.9±1.60	24.2±0.35 <sup>b</sup>
	75	18.3±0.66 <sup>bc</sup>	22.1±0.99	23.6±1.80 <sup>b</sup>
	100	15.2±1.99 <sup>c</sup>	21.4±3.08	19.4±1.12 <sup>c</sup>
	125	22.0±1.43 <sup>ab</sup>	19.5±1.28	27.8±0.21 <sup>a</sup>

Note: superscript of a, b and c indicated significant different at 5% of LSD

#### 4. DISCUSSION

Based on cytotoxic results carried out for methanol extract of *A. marina* leaves and taurine on *HeLa* cervical cancer cells, both of compounds (*A. marina* extract and taurine) were able to kill the *HeLa* cells indicated by lowering in cell viability (%). This cytotoxic ability was also showed by the destruction of cells by looking at the morphology (Figure 3 a, b, c, and d). *HeLa* cells that underwent apoptosis had a different morphology. Cells shrank as a result of intracellular fluid loss and very low cell density [13]. Living *HeLa* cells are generally polygonal in shape and attached to the matrix. However, it will be separated from the matrix after administration of trypsin.

The IC50 values for *A. marina* leaf extract was 321 ppm, taurine was 603 ppm, and doxorubicin was 12.35 ppm (Table 1). When compared to those of doxorubicin, the IC50 values of the two test compounds were greater. Yet, the standard IC50 value was <1000 ppm, meaning that extract of *A. marina* and taurine belonged to potential cytotoxic compound for the *HeLa* cell lines [14]. Therefore, these two compounds indicated their potential for cytotoxic activity, from which then can be used as anticancer agents [15]

Table 2 shows that the doubling-time values obtained were different at each concentration of the methanol extract of *A. marina* leaf and taurine. In this value for their doubling-time, the slope value of the linear regression equation could be used as a parameter of cell proliferation kinetics. In which the control cells had the slope value of 0.0041. This value became a reference for the treatment groups. If the value of the treatment slope was smaller than the value of the cell control slope, the time required for doubling time was longer [16]. As seen in Table 3, all treatment slope values were lower than the cell control slope values, indicating that the time needed for cells with multiple treatments was longer than for those of the control cells. All the preparation for treated cells to proliferate needed much longer time. These results also indicated that the methanol extract from *A. marina* leaf and taurine had potential as an antiproliferative compound for *HeLa* cervical cancer cells [17].

Based on the treatment with *A. marina* extract it showed a significant difference in the number of living cells in all concentrations. The highest average number of living cells was shown by giving

extract concentration of 25 ppm with incubation time of 72 hours, while the lowest average living cells are indicated by extract concentration of 125 ppm with incubation time of 72 hours. In the treatment of taurine, known as a free amino acid, with various concentrations, the average number of living cells differed significantly at the incubation time of 24 hours and 72 hours. These two test compounds indicated that they had cytotoxic activation of *HeLa* cervical cancer cells, presumably this was due to the presence of bioactive compounds contained in the extract of *A. marina*, such as steroid, flavonoids which known also as high levels of antioxidant, therefore, it could inhibit the process of oxidation and proliferation [18].

The cytotoxic activity of *A. marina* plants also showed strong anti-proliferation against L-929 rat fibroblasts and human leukemia cells K562 [19]. Against BT-20 breast cancer cells *A. marina* also showed moderate cytotoxicity [20]. *A. marina* leaf extracts had also proven cytotoxicity to breast cancer cells MCF-7 MDA-MB 231 through apoptosis [21]. *A. marina* as one of mangrove plants has the widest geographical distribution and function, other than as animal feed. Toxicological studies of *A. marina* extracts also indicated that *A. marina* could be developed into anticancer, antibacterial, and anti-arthritis medicinal plants [22].

## 5. CONCLUSION

- a. *A. marina* leaf extract, and taurine are toxic to *HeLa* cervical cancer cells, evidenced by the percentage of treatment cell viability that is lower than cell control, and the acquisition of IC50 values for all test compounds less than 1000 ppm
- b. *A. marina* leaf extract and taurine can inhibit the proliferation of *HeLa* cervical cancer cells indicating by their doubling-time which much longer than the cell control.
- c. Based on the differences in cytotoxic and anti-proliferative abilities, extract of *A. marina* is more effective as a cytotoxic and anti-proliferative compound against *HeLa* cervical cancer cells compared to a free amino acid taurine

## 6. ACKNOWLEDGEMENTS

The authors thanks to Institute for Research and Community Service (LPPM) University of Lampung which had fully funded this research through *DIPA BLU 2020 – Pascasarjana Scheme* and to Cell Culture and Cytogenetic Laboratory, Faculty of Medicine, Padjadjaran University, which had assisted the implementation of this research.

## REFERENCES

1. Departemen Kesehatan. 2018. Hari Kanker Sedunia 2019. [www.depkes.go.id](http://www.depkes.go.id). Diakses Pada 2 Mei 2020, Pada Pukul 23.35 WIB
2. Kementerian Kesehatan Republik Indonesia. 2020. Panduan Penatalaksanaan Kanker Serviks. [Kanker.kemkes.go.id](http://Kanker.kemkes.go.id). Diakses pada 2 Mei 2020
3. WHO (World Health Organization). 2010. Cervical Cancer. [www.who.int](http://www.who.int). Diakses pada 2 Mei 2020
4. Kusmana, C., Istomo, C. Wibowo, R. Budi S. W., I. Z. Siregar, T. Tiryana, S. Sukardjo, 2018. Manual Silvikultur Mangrove di Indonesia (The Rehabilitation Mangrove Forest and Coastal Area damaged by Tsunami in Aceh). Kerja Sama Kementerian Kehutanan Republik Indonesia dan KOICA (Korea International Cooperation Agency), Jakarta.
5. Bibi, SN, MM. Fawzi, Z. Gokhan, J. Rajesh, N. Nadeem, R. Kannan RR., Albuquerque RDDG, S.K.

- Pandian. 2019. Ethnopharmacology, Phytochemistry, and Global Distribution of Mangroves—A Comprehensive Review. *Mar Drugs*. 17(4): 231
6. Nurfitri, W. A., Endang, L. W., dan Endang, N. C. 2019. Efek Ekstrak Metanol Daun (*Acanthus ilicifolius* L.) serta Buah Jeruju dan Taurin dalam Menurunkan Kadar Glukos Darah dan Kolesterol serta Fertilitas Mencit Jantan (*Mus musculus* L.) yang diinduksi Alokasan. Prosiding Seminar Nasional Tumbuhan Obat Indonesia ke-55. Magelang.
  7. Das, S.K. D. Samantaray, A. Mahapatra, N. Pal, R. Munda, and H. Thatoi. 2018. Pharmacological activities of leaf and bark extracts of a medicinal mangrove plant *Avicennia officinalis* L. *Clinical Phytoscience* 4:13
  8. Widiastuti, E. L., Endang, N., and Bayu, P. D. J. 2018. Antioxidant Role of Taurine and Oyster Mushroom on Kidneys of Male Mice Induced by Paraquat Herbicide. *AIP Conference Proceedings* 2002, 020021.
  9. CCRC (Cancer Chemoprevention Research Center). 2009. Prosedur Pembuatan Media Kultur. Fakultas Farmasi Universitas Gadjah Mada. Yogyakarta.
  10. CCRC (Cancer Chemoprevention Research Center). 2009. Prosedur Perhitungan Sel. Fakultas Farmasi Universitas Gadjah Mada. Yogyakarta.
  11. CCRC (Cancer Chemoprevention Research Center). 2009. Prosedur Uji Proliferasi Sel (Doubling Time). Fakultas Farmasi Universitas Gadjah Mada. Yogyakarta.
  12. CCRC (Cancer Chemoprevention Research Center). 2013. Prosedur Uji Sitotoksik. Fakultas Farmasi Universitas Gadjah Mada. Yogyakarta.
  13. Suffness, M., and Pezzuto, J.M., 1990. *Assays Related to Cancer Drug Discovery*. In: *Hostettmann, K. (Ed.), Methods in Plant Biochemistry: Assays for Bioactivity*. Academic Press. London. 6 : 71-133.
  14. Nurani, L. H. 2011. Uji Sitotoksisitas, Antiproliferatif, and Pengaruhnya terhadap Ekspresi p53 and Bcl-2 dari Fraksi Etanol Infusa Daun Teh (*Camellia sinensis* (L.) O.K.) terhadap Sel HeLa. *Majalah Obat Tradisional*. 16(1): 14-21.
  15. Lisdawati, V. 2002. Senyawa Lignan dari Fraksi Etil Acetat Daging Buah Mahkota Dewa [*Phaleria macrocarpa* (Scheff.) Boerl.]. Thesis. Universitas Indonesia. Jakarta
  16. Tussanti I. dan Johan A. 2014. Sitotoksisitas In Vitro Ekstrak Etanolik Buah Parijoto (*Medinilla speciosa* Reinw. Ex Bl.) terhadap Sel Kanker Payudara T47D. *Jurnal Gizi Indonesia*. 2(2):53-58.
  17. Meiyanto, E., Sismindari, Lany, C., dan Moordiani. 2003. Efek Antiproliferatif Ekstrak Etanol Daun dan Kulit Batang Tanaman Cangkring (*Erythrina fusca* Lour.) terhadap Sel HeLa. *Majalah Farmasi Indonesia*. 14(3):124-131.
  18. Nurani, L. H. 2011. Uji Sitotoksisitas, Antiproliferatif, and Pengaruhnya terhadap Ekspresi p53 and Bcl-2 dari Fraksi Etanol Infusa Daun Teh (*Camellia sinensis* (L.) O.K.) terhadap Sel HeLa. *Majalah Obat Tradisional*. 16(1): 14-21.
  19. Eswaraih G., K. Abraham Peele., R B. Kumar., Venkateswarulu T.C., identification of bioactive in lead of *Avicennia alba* by Gc-MS analysis and evaluation of its in-vitro anticancer potential against MCF7 and HeLa Cell Line. *Journal of King Saud University* 2018.12.010
  20. Han, L., Huang, X., Dahse, H.M., Moellmann, U., Fu, H.Z., Grabley, S. et al., 2007. Unusual naphthoquinone derivatives from the twigs of *Avicennia marina*. *Journal of Natural Products* 70(6): 923-927.
  21. Sharaf, M., El-Ansari, M.A. & Saleh, N.A.M., 2000. New flavonoids from *Avicennia marina*. *Fitoterapia* 71: 274277.
  22. Momtazi-Borojeni, A.A., Behbahani, M. & Sadeghi-Aliabadi, H., 2013. Antiproliferative activity and apoptosis induction of crude extract and fractions of

- Avicennia marina. *Iranian Journal of Basic Medical Sciences* 16: 1203-1208.
23. Baba S., Chan H.T., Oshiro N., Maxwell G.S., Inoue T., Chan W.C.E. 2016. Botany, uses, chemistry and bioactivities of mangrove plants IV: Avicennia marina. *ISME/GLOMIS Electronic Journal*. Volume 14(2)

## ● 18% Overall Similarity

Top sources found in the following databases:

- 14% Internet database
- Crossref database
- 10% Submitted Works database
- 12% Publications database
- Crossref Posted Content database

### TOP SOURCES

The sources with the highest number of matches within the submission. Overlapping sources will not be displayed.

1	<b>backend.orbit.dtu.dk</b> Internet	1%
2	<b>Hongli Ye, Liangliang Tian, Youqiong Cai, Dongmei Huang, Zhaodong S...</b> Crossref	1%
3	<b>Victorian Institute of Technology on 2022-10-10</b> Submitted works	<1%
4	<b>Chester College of Higher Education on 2022-04-07</b> Submitted works	<1%
5	<b>garuda.ristekdikti.go.id</b> Internet	<1%
6	<b>jcreview.com</b> Internet	<1%
7	<b>repository.unair.ac.id</b> Internet	<1%
8	<b>N Jamarun, R Pazla, G Yanti. "Effect of boiling on in-vitro nutrients dige...</b> Crossref	<1%

9	<b>core.ac.uk</b>	Internet	<1%
10	<b>ijstr.org</b>	Internet	<1%
11	<b>R Rostika, Iskandar, T Herawati, I Bangkit, G Banthani, L P Dewanti. "Gr...</b>	Crossref	<1%
12	<b>idoc.pub</b>	Internet	<1%
13	<b>spandidos-publications.com</b>	Internet	<1%
14	<b>fpptijateng on 2022-01-12</b>	Submitted works	<1%
15	<b>ncbi.nlm.nih.gov</b>	Internet	<1%
16	<b>ijcc.chemoprev.org</b>	Internet	<1%
17	<b>eprints.utm.my</b>	Internet	<1%
18	<b>id.123dok.com</b>	Internet	<1%
19	<b>Bande Anusha, V. M Datta Darshan, Bondada Andallu. "Inhibition of pro...</b>	Crossref posted content	<1%
20	<b>K Bone. "Cytotoxic activity of polyacetylenes and polyenes isolated fro...</b>	Crossref	<1%

21	<b>Universitas Muhammadiyah Surakarta on 2018-01-06</b>	<1%
	Submitted works	
22	<b>journal.waocp.org</b>	<1%
	Internet	
23	<b>librarysearch.aut.ac.nz</b>	<1%
	Internet	
24	<b>mafiadoc.com</b>	<1%
	Internet	
25	<b>media.neliti.com</b>	<1%
	Internet	
26	<b>mdpi.com</b>	<1%
	Internet	
27	<b>S. Sasidharan, I. Darah, K. Jain. " . and . Toxicity Study of . ", Pharmac...</b>	<1%
	Crossref	
28	<b>jurnal.fmipa.unila.ac.id</b>	<1%
	Internet	
29	<b>Swagat K. Das, Sagarika Dash, Hrudayanath Thatoi, Jayanta K. Patra. "I...</b>	<1%
	Crossref	
30	<b>Universiti Teknologi MARA on 2021-03-01</b>	<1%
	Submitted works	
31	<b>journal.ugm.ac.id</b>	<1%
	Internet	
32	<b>open.uct.ac.za</b>	<1%
	Internet	

33	<b>rune.une.edu.au</b>	Internet	<1%
34	<b>753d5f54-1e4f-437a-9e75-f5baa8a89b3f.filesusr.com</b>	Internet	<1%
35	<b>Endang Linirin Widiastuti, Endang Nurcahyani, Bayu Putra Danan Jaya. ...</b>	Crossref	<1%
36	<b>M. Jaggi, R. Mukherjee. "New, Sensitive and Specific Elisa for the Dete...</b>	Crossref	<1%
37	<b>digilib.unila.ac.id</b>	Internet	<1%
38	<b>issuu.com</b>	Internet	<1%
39	<b>portal.webdepozit.sk</b>	Internet	<1%
40	<b>jpsr.pharmainfo.in</b>	Internet	<1%
41	<b>science.gov</b>	Internet	<1%
42	<b>Li Han, Xueshi Huang, Hans-Martin Dahse, Ute Moellmann, Hongzheng...</b>	Crossref	<1%
43	<b>ann-clinmicrob.biomedcentral.com</b>	Internet	<1%



## ● Excluded from Similarity Report

- Bibliographic material
- Manually excluded text blocks
- Manually excluded sources

### EXCLUDED SOURCES

**S Andriani, E L Widiastuti, N Nurcahyani, E rosa, H Busman. "Cytotoxic activity ... 85%**

Crossref

**repository.lppm.unila.ac.id 83%**

Internet

**S Andriani, E L Widiastuti, N Nurcahyani, E rosa, H Busman. " Cytotoxic activity... 83%**

Crossref

**pasca.unila.ac.id 76%**

Internet

**atlantis-press.com 15%**

Internet

**A N Artanti, U H Pujiastuti, R K Susanto, L D Pratiwi, F Prihapsara, R Rakhmaw... 4%**

Crossref

**E L Widiastuti, B K Ardiansyah, N Nurcahyani, A Silvinia. "Antidiabetic Potency... 4%**

Crossref

**repository.unej.ac.id 3%**

Internet

**F Yanto, I Royani, Suheryanto. "Application of nano electrode Ag/AgCl on pot... 3%**

Crossref

**phcogj.com 3%**

Internet

**E L Widiastuti, B K Ardiansyah, N Nurcahyani, A Silvinia. " Antidiabetic Potenc...** 3%

Crossref

**E L Widiastuti, I A Khairani. " Antioxidant effect of taurine and macroalgae ( s...** 3%

Crossref

**University of Surrey on 2021-10-20** 3%

Submitted works

**Hafiludin, S Andayani, H Kartikaningsih, M Firdaus, Mojiono. "Alteration of infl...** 2%

Crossref

**iopscience.iop.org** 2%

Internet

**research.aalto.fi** 2%

Internet

EXCLUDED TEXT BLOCKS

**To cite this article: S Andriani et al 2021 J. Phys.: Conf. Ser. 1751 012045**

repository.lppm.unila.ac.id

**View the article online for updates and enhancements**

repository.lppm.unila.ac.id

**ICASMI 2020Journal of Physics: Conference SeriesIOP Publishing**

S Andriani, E L Widiastuti, N Nurcahyani, E rosa, H Busman. " Cytotoxic activity of methanol extraction of an...

**leaves have the potential to beContent from this work may be used under the term...**

N Jamarun, R Pazla, G Yanti. "Effect of boiling on in-vitro nutrients digestibility, rumen fluid characteristics, a...

**ICASMI 2020Journal**

E L Widiastuti, B K Ardiansyah, N Nurcahyani, A Silvinia. "Antidiabetic Potency of Jeruju (Acanthus ilicifolius ...

**using a rotary evaporator at 50 °C until**

E L Widiastuti, B K Ardiansyah, N Nurcahyani, A Silvinia. " Antidiabetic Potency of Jeruju ( L.) Ethanol Extract...

---

**ICASMI 2020Journal of Physics: Conference SeriesIOP Publishing**

E L Widiastuti, B K Ardiansyah, N Nurcahyani, A Silvinia. " Antidiabetic Potency of Jeruju ( L.) Ethanol Extract...

---

**ICASMI 2020Journal of Physics: Conference SeriesIOP Publishing**

E L Widiastuti, B K Ardiansyah, N Nurcahyani, A Silvinia. " Antidiabetic Potency of Jeruju ( L.) Ethanol Extract...

---

**Journal of Physics: Conference SeriesIOP Publishing**

research.aalto.fi