

PAPER NAME

**Profile of aroma compounds and acceptability of modified tempeh**

AUTHOR

**Siti Nurdjanah**

WORD COUNT

**4055 Words**

CHARACTER COUNT

**22320 Characters**

PAGE COUNT

**7 Pages**

FILE SIZE

**344.4KB**

SUBMISSION DATE

**Jul 26, 2022 2:57 PM GMT+7**

REPORT DATE

**Jul 26, 2022 2:58 PM GMT+7****● 21% Overall Similarity**

The combined total of all matches, including overlapping sources, for each database.

- 18% Publications database
- Crossref Posted Content database
- Crossref database
- 11% Submitted Works database

**● Excluded from Similarity Report**

- Internet database
- Bibliographic material

## Profile of aroma compounds and acceptability of modified tempeh

Kustyawati, M.E., Nawansih, O. and \*Nurdjanah, S.

<sup>12</sup> Department of Agro-Product Technology, Faculty of Agriculture, University of Lampung, Jalan Soemantri Brojonegoro No 1 Lampung, Indonesia 35145

### Article history

<sup>19</sup> Received: 4 October 2015

Received in revised form:

9 April 2016

Accepted: 15 April 2016

### Abstract

Modified tempeh was prepared by the addition of *Saccharomyces cerevisiae* during the fermentation of soybeans for tempeh production. The sensory characteristics of modified tempeh were tested for their acceptability using hedonic test and descriptive test with Free Choice Profiling/FCP. The volatile compounds of tempeh were analyzed using GC-MS. The result showed that tempeh modified by the addition of 2% *S.cerevisiae* was acceptable by the panelists and had the scored of like for its color, flavor, aroma, and overall acceptability. These sensory characteristics were not different from those of non-modified tempeh. The raw modified tempeh had pleasant yeast/tapai aroma. This aroma was persisted after frying. On the other hand, the regular tempeh had beany aroma. The aroma compounds of modified tempeh were dominated by alcohol, ester, and aromatic group such as styrene, caryophyllene, phenol, and maltol; whereas, the aroma compounds of the regular tempeh were characterized by furan and sulfur. Nevertheless, both regular and modified tempeh contained 1-octen-3-ol, butanoic acid, and caryophyllene. Deeper and more comprehensive research for understanding the mechanisms of volatile compounds metabolism affected by the addition of *S.cerevisiae* is needed.

### Keywords

Aroma compound  
Modified tempeh  
*S. cerevisiae*

© All Rights Reserved

### Introduction

Modified tempeh could be prepared from a tempeh of which its microbial characteristics has been modified through the addition of certain microorganism during fermentation, or the disruption of its original characteristic by using several treatments, in order to improve its characteristics. Tempeh is a kind of miracle food because it contains long chain non saturated fatty acid, vitamin B-12, D and E, phytoestrogen and other functional compounds (Klus *et al.*, 1993 ; Keuth and Bisping, 1994; Wuryani, 1995; Nakajima *et al.*, 2005; Watanabe, 2007; Boniglia *et al.*, 2009). However, tempeh has unpleasant beany aroma which impart its acceptability (Nout dan Kiers, 2005).

Tempeh is one type of fermented soybean products. The fermentation of soybeans for tempeh production solely depends on the activity of *R. oligosporus*, However, some researchers reported that yeast can grow in the presence of bacteria and fungi during tempeh fermentation (Mulyowidarso *et al.*, 1990 ; Feng *et al.*, 2007; Kustyawati, 2009). Yet, the role of yeast on the tempeh fermentation is still unclear. In this research, tempeh was modified by the addition of *Saccharomyces cerevisiae* during soybeans fermentation. The addition of *S. cerevisiae*

on tempeh production was expected to improve the aroma and to mask the unpleasant beany aroma which is dominant in regular tempeh. Yeast has been used for bread making, various fermented food and drink for a long time, partly because of its ability to produce enzymes and its contribution to the aroma of the fermented product (Fleet, 1990; Welthagen dan Viljoen, 1999; Torrens *et al.*, 2008). Other researchers also explained that the fermentation of food and beverages undergone by *S. cerevisiae* was characterized by the production of isoamylalcohol, and 2,3-butan. These compounds are responsible for the pleasant aroma (Romano *et al.*, 2003 and Cordente *et al.*, 2007). Therefore, the incorporation of yeast into tempeh fermentation could be expected to alter flavor by eliminating the unpleasant beany flavor of tempeh. This research was aimed to evaluate the change of sensory properties and aroma compounds generated by the modified tempeh.

### Materials and Methods

The materials used in this experiment were American variety soybeans purchased from a local market in Bandar Lampung; starter used for tempeh preparation (Ragi) bought from Agency for Assessment and Application of Technology

\*Corresponding author.

Email: [nurdjanahmurdjanah@gmail.com](mailto:nurdjanahmurdjanah@gmail.com)

Tel: +6281272453460

(Badan Pengkajian dan Penerapan Teknologi/BPPT), Bandung Indonesia; pure culture of *Saccharomyces cerevisiae* bought from The Department of Agriculture Technology, University of Gadjah Mada, Indonesia; and various chemicals for aroma identification using GC-MS obtained from the Laboratorium of Flavor Analysis, Sukamandi, Indonesia.

#### Modified tempeh preparation

Modified tempeh was made by the addition of *S. cerevisiae*. Tempeh was prepared in laboratory according to the procedure described by Mulyowidarmo *et al.* (1990) as follows: First, soybean (300g) was washed, and then soaked in clean tap water for overnight at room temperature (28°C). Then the process was followed by dehulling. The clean dehulled soybean was boiled for 30 minutes with the ratio of water and soybean was 3:1. The boiled soybean was drained, air-dried and inoculated with 0.02 g ragi for every 100 g cooked soybean. *S. cerevisiae* was added to the beans according to designated treatments. After that, inoculated soybean was packed into the perforated plastic bags (5x10 cm) and incubated for 48 h at 32°C. Three types of tempeh samples prepared for this experiment were, (1) tempeh inoculated with ragi only, as a control, (2) tempeh inoculated with ragi and added *S. cerevisiae* at the concentrations of 1%, 2%, and 5% (w/w), and (3) tempeh inoculated solely with *S. cerevisiae*. All samples were prepared in duplo.

#### Sensory evaluation

Sensory evaluation of tempeh was conducted using Hedonic test followed the procedures explained in Meilgaard *et al.* (2000). Evaluation was performed by 50 semi-trained panelists who regularly consume tempeh. They were asked to evaluate both raw and fried tempeh. The parameters of raw tempeh included color, compactness, and aroma, whereas those for fried tempeh were texture, aroma and overall acceptability. The fried tempeh was prepared by frying the sliced tempeh in a deep frying pan containing palm oil for 5 minutes at 155 °C -170°C. The data were analyzed statistically using ANOVA to find the effect of the treatment, and then continued tested using the Honest Significant Differences (HSD) to find the most preferred tempeh. The most preferred tempeh then was further tested using Free Choice Profiling (FCP) to evaluate how the 50 panelists perceived and described the sensory properties of raw and fried modified tempeh as well as raw and fried regular tempeh, according to the procedure used by Guardia *et al.* (2011) with some modifications.

#### Aroma analysis

The most acceptable tempeh was selected and analyzed for its volatile compounds and compared to those of the regular tempeh. The samples were extracted using a head space solid phase micro extraction (SPME) method. Fifty grams of sample was put into an Erlenmeyer flask, sealed with aluminum foil with protective seal and fitted with a space solid phase micro extraction gastight syringe in such a way that the syringe would be directed to just above the food sample. The flask was placed in a water bath at 50°C with the syringe still be fitted. The volatiles released from the sample during 30 minutes at 50°C were absorbed onto SPME. The volatile collected from samples were analyzed using a HP 5890A gas chromatograph connected to a HP 5970 mass selective detector (Hewlett Packard). GC-MS was operated at 70 eV in the EI mode over the range 35-450 amu, column used was BP-5x Column (30 mx0.25 mm) with 0.25um film thickness to resolve the volatiles (Supelco, Sigma-Aldrich Co.). Helium was used as carrier at flow rate of 1 ml/minute. The collected volatiles were thermally desorbed at 250°C for 2 minute after desorption, the oven was heated rapidly to 60°C and maintained at this temperature for 5 min before the temperature was increased at 5°C min<sup>-1</sup> to 220°C (10 min). The constituents of samples were tentatively identified by matching their mass spectra with those recorded in the computer library (NIST98 and Wiley library).

## Results and Discussion

#### Sensory analysis

The sensory qualities of tempeh were based on the whole appearance, color, and texture. The appearances of tempeh are the results of the growth of mycelia covering the whole tempeh. The mycelium growth produces the white color of tempeh. In addition, during the growth, the hyphae of the mycelia are kneading together to bind the beans to construct the compactness of the tempeh. The modified tempeh made by the addition of 1% and 2% of *S. cerevisiae* had the appearance of white color of mycelia which covered the whole tempeh and compact texture similar to those of regular tempeh. This indicated that *S. cerevisiae* was able to grow together with *R. oligosporus* during the fermentation of the tempeh making. However, *R. oligosporus* mycelia were only seen on a little part of tempeh when *S. cerevisiae* was added as much as 5%. This phenomenon indicated that high concentration (5% addition) of *S. cerevisiae* could retard the growth of *R. oligosporus*.

Table 1. Recapitulation of HSD test for color, compactness, aroma, texture, and over all acceptability of all treatments of raw tempeh and fried tempeh

| Treatments     | Raw tempeh         |                   |                    |                    | Fried tempeh       |                    |                       |
|----------------|--------------------|-------------------|--------------------|--------------------|--------------------|--------------------|-----------------------|
|                | Color              | Compactness       | Aroma              | Texture            | Taste              | Aroma              | Overall acceptability |
| T <sub>0</sub> | 4.10 <sup>ab</sup> | 4.02 <sup>a</sup> | 3.66 <sup>ab</sup> | 3.70 <sup>ab</sup> | 3.78 <sup>ab</sup> | 3.72 <sup>b</sup>  | 3.82 <sup>b</sup>     |
| T <sub>1</sub> | 3.92 <sup>b</sup>  | 3.94 <sup>b</sup> | 3.48 <sup>b</sup>  | 3.82 <sup>a</sup>  | 4.04 <sup>a</sup>  | 4.02 <sup>a</sup>  | 4.06 <sup>a</sup>     |
| T <sub>2</sub> | 3.70 <sup>b</sup>  | 3.80 <sup>b</sup> | 3.12 <sup>bc</sup> | 3.56 <sup>ab</sup> | 3.60 <sup>bc</sup> | 3.58 <sup>bc</sup> | 3.82 <sup>b</sup>     |
| T <sub>3</sub> | 3.02 <sup>c</sup>  | 3.36 <sup>c</sup> | 2.80 <sup>c</sup>  | 3.52 <sup>b</sup>  | 3.48 <sup>c</sup>  | 3.44 <sup>c</sup>  | 3.38 <sup>c</sup>     |
| T <sub>4</sub> | 1.70 <sup>d</sup>  | 1.94 <sup>d</sup> | 1.82 <sup>d</sup>  | 2.78 <sup>c</sup>  | 2.54 <sup>d</sup>  | 2.86 <sup>d</sup>  | 2.42 <sup>d</sup>     |

Note: values followed by different superscript letters in the same column are significantly difference ( $p < 0.05$ ). T<sub>0</sub> = regular tempeh/control, T<sub>1</sub> = tempeh modified by the addition of 1% of *S. cerevisiae*, T<sub>2</sub> = Tempeh modified by the addition of 2% *S. cerevisiae*, T<sub>3</sub> = tempeh modified by the addition of 5% *S. cerevisiae*, T<sub>4</sub> = tempeh fermented solely by 5% of *S. cerevisiae*. Hedonic score: 1 = dislike very much, 2 = dislike, 3 = neutral (either dislike nor like), 4 = like, 5 = like very much

### 33 Hedonic test

Hedonic test was performed to evaluate the acceptability of modified tempeh and regular tempeh to the panelists. It was found that the color, the compactness and the aroma of the raw tempeh modified with 1 and 2% of *S. cerevisiae* were not significantly different, but different from those of regular tempeh. The aroma was scored around 3-3.6 (between neutral and like). In contrast to the fried tempeh, the results showed that the addition of 1% of *S. cerevisiae* to the tempeh resulted in the highest hedonic score of the the taste, aroma and overall acceptability (Tabel 1). This was because the frying process of tempeh could generate various volatiles compounds which some of them might originate from the versatile growth of the mycelia as well as *Saccharomyces*, and resulted in pleasant aroma preferred by the panelists. In addition, *S. cerevisiae* has a function of the conversion of carbohydrates into alcohols and other aroma components such as esters, organic acids and carbonyl compounds which have a great impact on the flavor of fermented food products. It was also found that inoculation of pure *S. cerevisiae* or in combination with other bacteria into rice, maize dough or into indigenous fermented foods such as “pito”, “ogi” increased the organoleptic scores significantly (Jespersen, 2003; Adeniran et al., 2012).

### Descriptive sensory analysis: Free-Choice Profiling

The majority of the panelists described the raw modified tempeh as having yellow-white, white, and gray-white colors; dense, compact and integrated

textures; typical tempeh, tapai/alcohol, pleasant, and yeasty aromas; bitter, astringent, savory, sour, umami, and sweet taste (Table 2). On the other hand, the fried modified tempeh had a typically brown color, hard crispy, oily, alcohol and pleasant odor, and umami taste. It showed that raw modified tempeh had a typical tapai/alcohol aroma, of which might masked the beany aroma, and was persisted after frying. Tapai or tape is produced by fermenting cooked cassava using various moulds, yeast mainly *Saccharomyces* and some bacteria. Tapai, one of popular indigenous foods among Southeast Asia primarily Indonesia and Malaysia, has sweet or sour taste and is consumed as snack (Law et al., 2011).

The beany aroma was found in most fermented foods of soybean based. The beany aroma was generated by a mixture volatile compounds such as methyl-1-butanol, hexanal, 2,4-decadienal, dimethyl disulfide (Boatright and Lei, 1999; Blagden and Gilliland, 2005; Jelen et al., 2013). The bitter taste was also not described by the panelists in fried tempeh. This was possibly due to degradation or conversion of compounds responsible for bitter taste. The interaction between amino acids and dicarbonyl compounds during heating process of tempeh produced other compounds such as alkyl pyrazines. Bitter taste of tempeh could be caused by the present of peptide and amino acids in raw soybeans or the growth of bacteria in tempeh. The enzymatic hydrolysis of proteins frequently leads to the production of bitter taste caused by the hydrophobic peptides, as a result of the degradation product of proteolytic reaction (Leejeerajumnean

Table 2. Recapitulation of the description of color, texture, taste and aromas of raw and fried modified tempeh by the addition of 2% *S. cerevisiae*

| Attributes | Descriptions    | Frequency (%) |       | Average Intensity (I) |       |
|------------|-----------------|---------------|-------|-----------------------|-------|
|            |                 | Raw           | Fried | Raw                   | Fried |
| Color      | yellow-white    | 90            |       | 6,4                   |       |
|            | white           | 30            |       | 5,7                   |       |
|            | gray-white      | 26            |       | 4,1                   |       |
|            | Yellow-brown    |               | 70    |                       | 7,3   |
|            | Brown           |               | 24    |                       | 6,1   |
|            | Golden yellow   |               | 12    |                       | 6     |
| Textures   | dense           | 56            | 40    | 5,3                   | 7,2   |
|            | compact         | 82            | 70    | 6,4                   | 6,8   |
|            | integrated      | 30            | 30    | 6                     | 4,7   |
|            | crispy          | 0             | 40    | 0                     | 5,2   |
|            | fungi           | 38            | none  | 5,3                   | none  |
| Aroma      | unpleasant      |               |       |                       |       |
|            | beany           | 56            | 12    | 5,9                   | 3     |
|            | specific tempeh | 80            | 84    | 7,5                   | 7,3   |
|            | tapai (alcohol) | 6             | 8     | 4,3                   | 5     |
|            | Raw soybean     | 48            | none  | 6,2                   | none  |
|            | pleasant        | 12            | 50    | 6,8                   | 6,8   |
|            | Yeast           | 10            | 10    | 5,8                   | 5,5   |
| Taste      | bitter          | 32            | none  | 3,6                   | none  |
|            | astringent      | 50            | 16    | 4,5                   | 3,5   |
|            | savory          | 32            | 76    | 5,8                   | 6,9   |
|            | sour            | 34            | 20    | 3,6                   | 3,5   |
|            | Umami           | 14            | 56    | 5,3                   | 7     |
|            | sweet           | 12            | 14    | 3,5                   | 5,1   |
|            | bland           | 8             | none  | 4,5                   | none  |
|            | salty           | 6             | 66    | 3                     | 5,5   |

Note: Frequency = Relative frequency describing how many percent of panelists describing each particular description (number of panelists describing the same description / total panelists x 100%). I = Average of relative intensity of each description ranges from 0 to 10. The data given were the average of 2 replicates.

<sup>39</sup> et al., 2001; Boue et al., 2005). <sup>2</sup> Jelen et al. (2013) found that frying process of tempeh induced the increase of the main key odorants such as 2-acetyl-1-pyrroline, 2-ethyl-3,5-dimethylpyrazine, dimethyl trisulfide, methional, 2-methylpropanal, and (E,E)-2,4-decadienal. Qin and Ding (2007) found that arginine, glutamic acid, phenylalanine, leucine and lysine were the most free amino acids (FAA) induced the bitterness in Chinese fermented-soy Duchiba. Whereas, Barus et al. (2008) found that the bitter taste was found in tempeh containing abundance bacterial population.

#### The analysis of aroma compounds of regular tempeh and modified tempeh

The aroma profile of modified tempeh and regular tempeh were identified with GC-MS method. Some typical chromatograms are shown in Figure 1 and Figure 2. The compounds identified in both regular and modified tempeh were presented in Table 3. The results showed that the regular tempeh generated 23 volatile compounds consisted of alcohol (7 compounds), ketone (2 compounds), furans (2 compounds), fatty acid (4 compounds), ester (1 compound), hydrocarbon (1 compound), sesquiterpenes (2 compounds), benzenoid (3 compounds), and sulfur containing compound (1 compound). Whereas 26 volatile compounds were identified in modified tempeh. They were alcohol (8 compounds), ketone (5 compounds), fatty acid (3

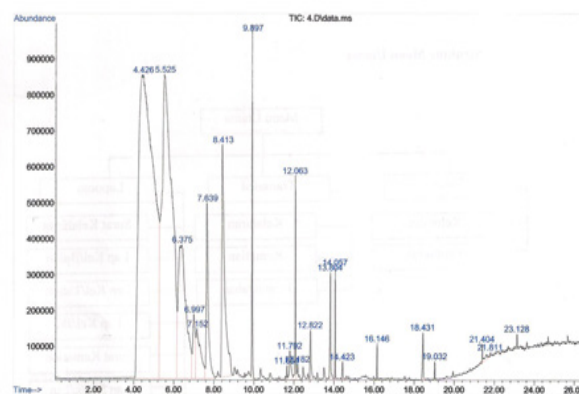


Figure 1. Profile of volatiles aromas SPME from regular tempeh.

Retention times and area in the chromatograms are mentioned in Table 3.

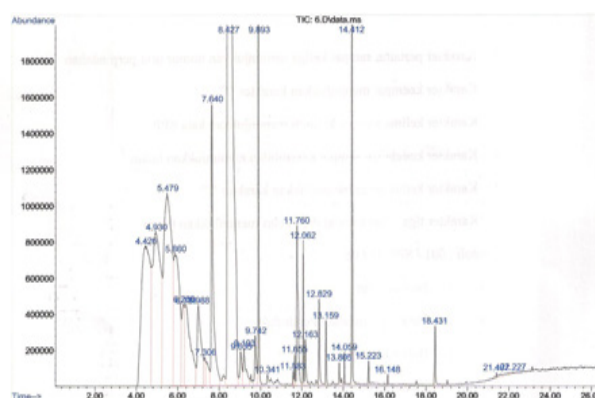


Figure 2. Profile of volatiles aromas SPME from modified tempeh by addition of 1% *S. cerevisiae*.

Retention times and area in the chromatograms are mentioned in Table 3.

Table 3. Volatile compounds of modified tempeh by the addition of 2% *S. cerevisiae* and regular tempeh

| Modified tempeh                       |                |          | Regular tempeh                        |                |         |
|---------------------------------------|----------------|----------|---------------------------------------|----------------|---------|
| Volatile compounds                    | Retention time | Area     | Volatile compounds                    | Retention time | Area    |
| <b>Alcohol</b>                        |                |          | <b>Alcohol</b>                        |                |         |
| Ethyl alcohol                         | 5.5073         | 561109   | Ethyl alcohol                         | 5.5189         | 2938147 |
| 2-butanol                             | 6.2529         | 237576   | 2-methyl-1-propanol                   | 6.9847         | 1562462 |
| 2-pentanol                            | 6.3107         | 118062   | 3-methyl-1-butanol                    | 8.4103         | 9164302 |
| 1-propanol                            | 6.3969         | 149215   | 2-methyl-3-buten-2ol                  | 9.6205         | 70784   |
| 1-butanol                             | 10.3379        | 459893   | 1-octanol                             | 10.336         | 215578  |
| 1-octen-3-ol                          | 11.5812        | 496971   | 1-octen-3-ol                          | 11.5792        | 45210   |
| 2-methyl-1-propanol                   | 6.9914         | 3998097  | 1-propanol                            | 13.9187        | 11874   |
| 3-methyl-1-butanol                    | 8.4188         | 1.080008 |                                       |                |         |
| <b>Ketones</b>                        |                |          | <b>Ketones</b>                        |                |         |
| Butanone                              | 5.4193         | 215295   | 3-hydroxy-3-methyl-2-butanone         | 7.1635         | 582048  |
| 2-octanone                            | 8.2399         | 60946    | 3-hydroxy-2-butanone                  | 9.7563         | 30555   |
| 3-hydroxy-3-methyl-2-butanone         | 10.505         | 86950    | <b>Furans</b>                         |                |         |
| 3-hydroxy-2-butanone                  | 9.7394         | 2785107  | Dihydro-5-methyl-2(3H)-furanone       | 22.6851        | 11576   |
|                                       |                |          | Furan                                 | 9.0314         | 245625  |
| <b>Fatty acid</b>                     |                |          | <b>Fatty acid</b>                     |                |         |
| Acetic acid                           | 11.7565        | 7894178  | Acetic acid                           | 11.7906        | 610766  |
| Propanoic acid                        | 12.828         | 2857683  | Propanoic acid,                       | 13.1595        | 103775  |
| Butanoic acid                         | 13.9177        | 132104   | 2-methyl-Butanoic acid,               | 14.4217        | 215257  |
|                                       |                |          | 2-methyl-Butanoic acid                | 16.8845        | 15434   |
| <b>Ester</b>                          |                |          | <b>Ester</b>                          |                |         |
| Butanoic acid,                        | 11.8079        | 1252389  | Butanoic acid,                        | 18.6874        | 12343   |
| 2-methyl-, ethyl ester                |                |          | 2-methyl-, ethyl ester                |                |         |
| Propanoic acid, 2-methyl-ester        | 13.1568        | 2153178  | <b>Hydrocarbon</b>                    |                |         |
| Butanoic acid, 3-methyl-ester         | 14.4077        | 10107363 | Undecane                              | 9.1819         | 41399   |
| <b>Terpenoid</b>                      |                |          | <b>Terpenoid</b>                      |                |         |
| Caryophyllene                         | 13.802         | 770245   | Caryophyllene                         | 13.8012        | 1851732 |
| $\alpha$ -caryophyllene               | 14.743         | 7057     | $\alpha$ -caryophyllene               | 147446         | 9130    |
| Styrene                               | 9.3397         | 256249   |                                       |                |         |
| <b>Benzenoid</b>                      |                |          | <b>Benzenoid</b>                      |                |         |
| Phenol, 2-methoxy-Phenylethyl alcohol | 17.5388        | 143878   | Phenol, 2-methoxy-Phenylethyl alcohol | 17.5404        | 48660   |
| Maltol                                | 18.4296        | 2562389  | Phenol                                | 18.4282        | 1034690 |
| Phenol                                | 19.6097        | 11634    |                                       | 19.9436        | 80673   |
|                                       | 19.9409        | 29321    | <b>Sulfur containing compound</b>     |                |         |
|                                       |                |          | Dimethyl disulfide                    | 12.5851        | 1550    |

Note: The values given were the average of 2 replicates.

compounds), ester (3 compounds), Sesquiterpenes (3 compounds), and benzenoid (4 compounds). The volatile aroma compounds of the modified tempeh were dominated by alcohol, ester, and aromatic groups, while the regular tempeh contained of furan, undecane and dimethyl disulfide. Nevertheless, 1-octen-3-ol, a mushroom smelling compound originated from the beans was presence in both regular and modified tempeh. This finding was in

agreement with Feng *et al.* (2007), found that the volatile compounds produced during soybean tempeh fermentation included ethanol, acetone, 2-butanone and 3-methyl-1-butanol as well as 3-octanone and 1-octen-3-ol. Even though, Jelen *et al.* (2013) found that key odorants in tempeh after five days of fermentation included pyrazine, sulfides, aldehydes and 8-carbon-alcohols and ketones. Compound of 1-octen-3-ol was originated from the conversion of

linolenic acid in soybeans into C8 and C10 by the presence of hydroperoxide cleavage enzymes which cleavage of 13- and 9-hydroperoxide into C8 and C10 compounds (Feng *et al.*, 2007; Jelen *et al.*, 2013). In addition,  $\alpha$ -caryophyllene and caryophyllene were identified in regular tempeh as well as modified tempeh in our experiment. It is likely that tempeh of soybean based fermented by *R. oligosporus* had the characteristic of having 1-octen-3-ol, butanoic acid, and  $\alpha$ -caryophyllene. Caryophyllene is aromatic hydrocarbon which originated from the soybeans and this compound is reported to be responsible for flavor in herbal spices (Shylaja and Peter, 2004). Feng *et al.* (2007) also detected a volatile sesquiterpenes,  $\beta$ -caryophyllene during *R. oligosporus* growth on soybean. Furans and hydrocarbon, identified in regular tempeh were not detected in modified tempeh. It is supposed that those compounds were either broken down, converted to other compounds, or masked by the other volatile compounds because they were present in very low odor intensity. Damien *et al.* (2004) reported that dimethyl disulfide, one of the key odorant of tempeh fermentation of soybean based, was found at a very low odor intensity in fermented soybean curd. Sulfides are formed from the degradation of methionine to become methional which is a starting point for methanethiol formations, and subsequently yields dimethyl-disulfide, trimethyl, and tetramethyl-disulfide. Sulfides compounds did not decrease during frying of tempeh because it was attributed to its formation from S-methylmethionine during heating (Jelen *et al.*, 2013). In addition, Dajantaa *et al.* (2013) found that dimethylsulfides were noted to increase during the fermentation of thua-nao, a soy based bacterial fermentation. However, in this study, sulfides were not detected.

The components of esters found in modified tempeh were butanoic acid, 2-methyl-, ethyl ester, propanoic acid, 2-methyl-ester, and butanoic acid, 3-methyl-ester, whereas butanoic acid, 2-methyl-, ethyl ester was the only ester compound in regular tempeh. This was true as the modified tempeh containing *S. cerevisiae*, of which is central in the production of aroma compounds during fermentation. In the wine making, esters are the most important yeast-derived aroma compounds produced during fermentation (Romano *et al.*, 2003; Cordente *et al.*, 2007). Esters are formed intracellularly in an enzyme-catalyzed reaction between a higher alcohol and an activated acyl-CoA molecules. Ester compounds imparted the aroma of fruity or flowery (Torren *et al.*, 2008; Pereira *et al.*, 2014). Modified tempeh also contained styrene compounds, an aromatic hydrocarbon, which was not identified in regular tempeh. Styrene or

vynil benzene contributes to sweet smell (Dennis *et al.*, 2005).

It is likely that the variety of the volatile compounds identified in both types of the tempeh was responsible for aroma differences generated among those tempeh. The sensory analysis indicated that the aroma of modified tempeh was yeasty and the regular tempeh was beany. This demonstrates a complementary role of *S. cerevisiae* associated with tempeh quality through the synthesis of yeast-specific volatile compounds.

## Conclusion

Raw modified tempeh had aroma of pleasant "yeasty tempeh" which was typical tapai or alcohol aroma. This unique aroma still persisted after the modified tempeh was fried, although it was at low intensity. Fried tempeh modified by the addition 1% of *S. cerevisiae* had the highest hedonic score for aroma and overall acceptability. This study shows that the use of mixed cultures of *R. oligosporus* and *S. cerevisiae* in fermentation processes could be a strategy to minimize the beany flavor of tempeh.

## Acknowledgement

We would like to thank to the The Ministry of Research, Technology and Higher Education of The Republic of Indonesia for funding this reserach through Fundamental Research Grant.

## References

- Adeniran, O., Atanda, O., Edema, M. and Oyewolw, O. 2012. Effect of lactic acid bacteria and yeast starter cultures on the soaking time and quality of Ofada Rice. Food and Nutrition Science 3: 207-211.
- Barus, T., Suwanto, A., Wahyudi, A.T. and Wijaya, H., 2008. Role of bacteria in tempeh bitter taste formation: microbiological and molecular biological analyses based on 16SrRNA gene. Microbiology Indonesia (2)1: 17-21.
- Blagden, T.D. and Gilliland, S.E. 2005. Reduction of levels of volatile components associated with the beany flavor in soymilk by Lactobacilli and Strptococci. Journal of Food Science 70(3): 186-189.
- Boniglia, C., Carratu, B., Gargiulo, R., Giammarioli, S., Mosca, M. and Sanzini, E. 2009. Content of phytoestrogens in soy-based dietary supplements. Food Chemistry 115: 1389-1392.
- Boatright, W.L. and Lei, Q. 1999. Compounds contributing to the beany odor of aqueous solution of soy protein isolates. Journal of Food Science 64(4): 667-670.
- Boue, S.M., Shih, B.Y., Carten-Wientjes, C.H. and Cleveland, T.E. 2005. Effect of soybean lipoxigenase

- on volatile generation and inhibition of *Aspergillus flavus* mycelial growth. *Journal of Agricultural and Food Chemistry* 53(12): 4778-4783.
- Cordente, A.G., Swiegers, J.H., Hegardt, F.G. and Pretorius, I.S. 2007. Modulating aroma compounds during wine fermentation by manipulating carnitine acetyl transferases in *Saccharomyces cerevisiae*. *FEMS Microbiology Letters* 267(2): 159-166.
- Damian, C.F., Owen, C.M. and Patterson, J. 2004. Solid phase microextraction (SPME) combined with gas-chromatography and olfactometry-mass spectrometry for characterization of cheese aroma compounds. *LWT. Food Science and Technology* 37(2): 139-154.
- Dennis, H., William, J. and Castor, M. 2005. "Styrene" in Ullmann's Encyclopedia of Industrial Chemistry, Weinheim: Wiley-VCH.
- Dajantaa, K., Apishartsarangku, A. and Chukeatirote, E. 2013. Changes on biochemical and nutritional quality of aerobic and vacuum-packaged *Thua nao* during shelf-life storage. *Pakistan Journal of Biological Science* 16(11): 501-509.
- Feng, X.M., Larsen, T.O. and Schnürer, J. 2007. Production of volatile compounds by *Rhizopus oligosporus* during soybean and barley tempeh fermentation. *Journal of Food Microbiology* 113(2): 133-141.
- Fleet, G.H. 1990. Growth of yeasts during wine fermentations. *Journal of Wine Research* 1: 211-223.
- Guardia, M.D., Aguiar, A.P.S., Claret, A., Arnau, J. and Guerrero, L. 2011. Sensory characterization of dry-cured ham using free-choice profiling. *Food Quality and Preference* 21: 148-155
- Jelen, H., Majcher, M., Ginja, A. and Kuligowsky, M. 2013. Determination of compounds responsible for tempeh aroma. *Food Chemistry* 141(1): 459-465.
- Jespersen, L. 2003. Occurrence and taxonomic characteristics of strains of *Saccharomyces cerevisiae* predominant in African indigenous fermented foods and beverages. *FEMS Yeast Research* 3: 191-200.
- Keuth, S. and Bisping, B. 1994. Vitamin B12 production by *Citrobacter freundii* or *Klebsiella pneumonia* during tempeh fermentation and proof of enterotoxin absence by PCR. *Applied and Environmental Microbiology* 60(5): 1495-1499.
- Klus, K., Borger-Papendorf, G. and Barz, W. 1993. Formation of 6,7,4 trihydroxyisoflavone (factor 2) from soybean seed isoflavone by bacteria isolated from tempe. *Phytochemistry* 34(4): 979-981.
- Kustyawati, M.E. 2009. Kajian peran yeast dalam pembuatan tempe. *Jurnal AGRITECH* 29(2): 64-70.
- Law, S. V., Abu Bakar, F., Mat Hashim, D. and Abdul Hamid, A. 2011. Popular fermented foods and beverages in Southeast Asia. *International Food Research Journal* 18: 475-484.
- Leejeerajumnean, A., Duckham, S.C., Owens, J.D. and Ames, J.M. 2001. Volatile compounds in *Bacillus*-fermented soybeans. *Journal of the Science of Food and Agriculture* 81(5): 525-529.
- Meilgaard, M., Civille, G.V. and Carr, B.T. 2000. Sensory evaluation techniques. 2<sup>nd</sup> ed. London: CRC Press.
- Mulyowidarso, R.K., Fleet, G.H. and Buckle, K.A. 1990. Association of bacteria with the fungal fermentation of soybean tempe. *Journal of Applied Microbiology* 68(1): 43-47.
- Nakajima, N., Nozaki, N., Ishihara, K., Tsuji, H. and Ishikawa, A. 2005. Analysis of isoflavone content in tempeh, a fermented soybean, and preparation of a new isoflavone-enriched tempeh. *Journal of Bioscience and Bioengineering* 100(6): 685-687.
- Nout, M.J.R. and Kiers, J.L. 2005. Tempe fermentation, innovation and functionality: Update into the third millennium. *Journal of Applied Microbiology* 98(4): 789-805.
- Pereira, G.V.M., Sccol, V.T., Pandey, A., Medeiros, A.B.P., Lara, J.M.R.A., Gollo, A.L. and Soccol, C.R. 2014. Isolation, selection and evaluation of yeasts for use in fermentation of coffee beans by the wet process. *International Journal of Food Microbiology* 188: 60-66.
- Qin, L. and Ding, X. 2007. Formation of taste and odor compounds during preparation of Douchiba, a Chinese traditional soy-fermented appetizer. *Journal of Food Biochemistry* 31(2): 230-251.
- Romano, P., Fiore, C., Paraggio, M., Caruso, M. and Capece, A. 2003. Function of yeast species and strains in wine flavour. *International Journal of Food Microbiology* 86(1-2): 169-180.
- Shylaja, M.R. and Peter, K.V. 2004. The functional role of herbal spices. In Peter K.V.(Eds). *Handbook of Herbs and Spices*, Vol. 2. Cambridge: CRC Press.
- Torrens, J., Urpí, P., Riu-Aumatell, M., Vichi, S., López-Tamames, E. and Buxaderas, S. 2008. Different commercial yeast strains affecting the volatile and sensory profile of cava base wine. *International Journal of Food Microbiology* 124: 48-57.
- Watanabe, F. 2007. Vitamin B12 sources and bioavailability. *Experimental Biology and Medicine* 232: 1266-1274.
- Welthagen, J.J. and Viljoen, B.C. 1999. The isolation and identification of yeasts obtained during the manufacture and ripening of cheddar cheese. *Food Microbiology* 16(1): 63-73.
- Wuryani, W. 1995. Isoflavones in tempe. *Asean Food Journal* 10(3): 99-102.



## ● 21% Overall Similarity

Top sources found in the following databases:

- 18% Publications database
- Crossref database
- Crossref Posted Content database
- 11% Submitted Works database

### TOP SOURCES

The sources with the highest number of matches within the submission. Overlapping sources will not be displayed.

|   |   |     |
|---|---|-----|
| 1 | <b>Fabienne F. V. Chevance, Linda J. Farmer. "Identification of Major Vola...</b> | 3%  |
|   | Crossref  |     |
| 2 | <b>A. A. Refaat, Hemmat, M. Abdel-hady, Shimaa, A. Amin, A. M. Emam. "...</b>     | 2%  |
|   | Crossref  |     |
| 3 | <b>Udayana University on 2017-07-19</b>   | 1%  |
|   | Submitted works   |     |
| 4 | <b>Antonio G. Cordente, Jan H. Swiegers, Fausto G. Hegardt, Isak S. Preto...</b>  | 1%  |
|   | Crossref  |     |
| 5 | <b>Jeleń, Henryk, Małgorzata Majcher, Alexandra Ginja, and Maciej Kuligo...</b>   | 1%  |
|   | Crossref  |     |
| 6 | <b>LIKANG QIN. "FORMATION OF TASTE AND ODOR COMPOUNDS DURIN...</b>                | <1% |
|   | Crossref  |     |
| 7 | <b>Xin Mei Feng, Thomas Ostenfeld Larsen, Johan Schnürer. "Production ...</b>     | <1% |
|   | Crossref  |     |
| 8 | <b>de Melo Pereira, Gilberto Vinícius, Vanete Thomaz Soccol, Ashok Pand...</b>    | <1% |
|   | Crossref  |     |
| 9 | <b>Universitas Diponegoro on 2017-03-06</b>                                       | <1% |
|   | Submitted works   |     |

- 10 **University of Bristol on 2007-03-20** <1%  
Submitted works

---
- 11 **Maria Gabriela da Cruz Pedrozo Miguel, Marianna Rabelo Rios Martins ...** <1%  
Crossref

---
- 12 **Samsul Rizal, Maria Erna Kustyawati, Murhadi, Udin Hasanudin, Subek...** <1%  
Crossref

---
- 13 **Universiti Teknologi MARA on 2017-12-25** <1%  
Submitted works

---
- 14 **Universiti Teknologi MARA on 2018-10-15** <1%  
Submitted works

---
- 15 **University Of Eldoret on 2021-12-01** <1%  
Submitted works

---
- 16 **"Textural Characteristics of World Foods", Wiley, 2020** <1%  
Crossref

---
- 17 **Teresa Vania Tjahja, Anto Satriyo Nugroho, James Purnama, Nur Aziza...** <1%  
Crossref

---
- 18 **Zhining Bao, Jian Xiong, Weifeng Lin, Jun Ye. " Profiles of free fatty aci...** <1%  
Crossref

---
- 19 **Manchester Metropolitan University on 2017-02-16** <1%  
Submitted works

---
- 20 **Oregon State University on 2021-05-17** <1%  
Submitted works

---
- 21 **School of Business and Management ITB on 2019-02-20** <1%  
Submitted works

- 22 **University of Melbourne on 2011-09-28** <1%  
Submitted works
- 
- 23 **Hui Qian Chuah, Pei Ling Tang, Ni Jing Ang, Hui Yin Tan. "Submerged f...** <1%  
Crossref
- 
- 24 **Jespersen, L.. "Occurrence and taxonomic characteristics of strains of ...** <1%  
Crossref
- 
- 25 **Nirutchara Sunthonvit. "Effects of High-Temperature Drying on the Flav...** <1%  
Crossref
- 
- 26 **Rui Gao, Dongxiao Sun-Waterhouse, Huan Xiang, Chun Cui, Geoffrey I. ...** <1%  
Crossref
- 
- 27 **UIN Sunan Gunung DJati Bandung on 2022-05-16** <1%  
Submitted works
- 
- 28 **University of Ulster on 2014-03-28** <1%  
Submitted works
- 
- 29 **"Ethnic Fermented Foods and Alcoholic Beverages of Asia", Springer S...** <1%  
Crossref
- 
- 30 **Budhi Setiawan, Sandeep Kumar Thamtam, Ignasius Radix AP Jati, Rat...** <1%  
Crossref
- 
- 31 **Chen, J.L.. "Changes in the volatile compounds and chemical and phys...** <1%  
Crossref
- 
- 32 **Garde-Cerdan, T.. "Effect of storage conditions on the volatile composi...** <1%  
Crossref
- 
- 33 **Nurfitri Ekantari, Siti Ari Budhiyanti, Wahdan Fitriya, Asep Bayu Hamda...** <1%  
Crossref

- 34 Rachma Wikandari, Dyah Ayu Kinanti, Regina Devi Permatasari, Nur Lis... <1%  
Crossref
- 
- 35 University of Melbourne on 2009-11-17 <1%  
Submitted works
- 
- 36 76830 on 2014-11-14 <1%  
Submitted works
- 
- 37 M.J.R. Nout. "Tempe fermentation, innovation and functionality: updat... <1%  
Crossref
- 
- 38 Somasundaram Rajarathnam, Mysore Nanjara jaUrs Shashirekha, Zaki... <1%  
Crossref
- 
- 39 Xiquan Gao, Michael V. Kolomiets. "Host-derived lipids and oxylipins ar... <1%  
Crossref