

LEMBAR PENGESAHAN

Judul : **Internet Traffic Measurement: Trends and Impact to Campus Network**
Penulis : Gigih Forda Nama, M. Komarudin, **Mardiana**, R. Arum Setia Priadi, Hery Dian Septama, Meizano Ardhi Muhammad, Titin Yulianti
NIP : 197203161999032002
Instansi : Jurusan Teknik Elektro, Fakultas Teknik Universitas Lampung
Publikasi : INSIST Vol. 1 No. 1, October 2016 (43 – 48) eISSN: 2502-8588
Penerbit : Universitas Lampung
URL Link : <http://repository.lppm.unila.ac.id/541/>

Bandar Lampung, 13 Oktober 2021

Mengetahui,
Dekan Fakultas Teknik
Universitas Lampung



Prof. Drs. Ir. Suharno, Ph.D., IPU., ASEAN Eng.
NIP. 196207171987031002

Penulis,

Dr. Eng. Mardiana, S.T., M.T.
NIP. 197203161999032002

Menyetujui,
Ketua Lembaga Penelitian dan Pengabdian Kepada Masyarakat
Universitas Lampung



Dr. Ir. Lusmeilia Afriani, D.E.A.
NIP. 196505101993032008

DOCUMENTASI LEMBAGA PENELITIAN DAN PENGABDIAN KEPADA MASYARAKAT UNIVERSITAS LAMPUNG	
TGL	03/11/2021
NO. INVEN	177/P/B/11/FT/2021
JENIS	Presiding
PARAF	l

I N S I S T

International Series on Interdisciplinary Science and Technology

Table of Contents

Evaluation of The Effect of Pasak Bumi (<i>Eurycoma longifolia</i> Jack) to Increase Androgen Levels Hurip Pratomo	1
Counting the Number of Disconnected Labeled Graphs of Order Five without Paralel Edges Wamilians, Amanto, Grita Tumpi Nagari	4
Implementation of User Anthropometry Bale "Sakenem" Buildings based on Height Bataran and Height Bale-bale in Singapadu Tengah Village, Gianyar IWayan Parwata, Anak Agung Gede Oka Wisnumurti, Ni Wayan Meidayanti Mustika	8
The Comparison of Bundle-Pricing Scheme Models Using Quasi-Linear Utility Function Fitri Maya Puspita ¹ , Evi Yuliza, Muthia Ulfa	12
2D Groundwater Depth for Analysis of The Zone Unconfined Aquifer Fitri Maya Puspita, Evi Yuliza, Muthia Ulfa	16
The Scheme of 10 th Order Implicit Runge-Kutta Method to Solve the First Order of Initial Value Problems Z. Bahn, L. Zakaria, Syamsudhuha	20
Strengthening of Nurul Ilimi Mosque with Concrete Jacketing Fauzan Febrin Anas Ismail, Saka Aprwaini, Imeka Faradiza, Zev Al Jauhari	25
A Model-Based Simulator for Content Delivery Network using SimEvents MATLAB-Simulink Erwin Harahap, Ich Sukarsih, Gani Gunawan, M. Yusuf Fajar, Deni Darmawan, Hiroaki Nishi	30
The influence of magnetic field on the growth of tomato (<i>Lycopersicum esculentum</i>) infected with <i>Fusarium oxysporum</i> Rochmah Agustrina, Endang Nurcahyani, Eko Pramono, Ika Listiana, Eko Nastiti	34
Social Media Used in Higher Education: A Literature Review of Theoretical Models Waleed Mughed Al-Rahmi, Norma Alias, Mohd Shahizan	38
Internet Traffic Measurement: Trends and Impact to Campus Network Gigih Forda Nama, M. Komarudin, Mardiana, R. Arum Setia Priadi, Hery Dian Septama, Meizano Ardhi Muhammad, Tiin Yulianti	43
Support Vector Machine (SVM) For Toddler's Nutritional Classification in Palu City Andi Hendra, Gazali	49
Surface Roughness Values of Magnesium Alloy AZ31 when Turning by Using Rotary Cutting Tool Gusri Akhyar, Suryadiwansa Harun, Arinal Hamni	54
Library Automation Systems Integration (Case: ELIB and SLIMS) Meizano Ardhi Muhamad, Mardiana	60
The Shoreline Retreat and Spatial Analysis over the Coastal Water of Belawan A. Perwira Mula Tarigan, Wlwin Nurzanah	65

Editorial Team

Editor in Chief

1. [Dr Melvi Ulvan](#), [Scopus Author ID: 35749239600] Universitas Lampung, Department of Electrical Engineering, Bandar Lampung, Indonesia

Managing Editor

1. [Dr Dewi Agustina Iryani](#), [Scopus Author ID: 55968759500] Universitas Lampung, Department of Chemical Engineering, Bandar Lampung, Indonesia

Editorial Board

1. [Dr Ardian Ulvan](#), [Scopus Author ID: 23020493200] Universitas Lampung, Department of Electrical Engineering, Bandar Lampung, Indonesia

Table of Contents

Articles

<u>Evaluation of The Effect of Pasak Bumi (Eurycoma longifolia Jack) to Increase Androgen Levels</u> <i>Hurip Pratomo</i>	PDF 1-3
<u>Counting the Number of Disconnected Labeled Graphs of Order Five without Paralel Edges</u> <i>Wamiliana Wamiliana, Amanto Amanto, Grita Tumpi Nagari</i>	PDF 4-7
<u>Implementation of User Anthropometry Bale "Sakenem" Buildings based on Height Bataran and Height Bale-bale in Singapadu Tengah Village, Gianvar</u> <i>I Wayan Parwata, Anak Agung Gede Oka Wisnumurti, Ni Wayan Meidayanti Mustika</i>	PDF 8-11
<u>The Comparison of Bundle-Pricing Scheme Models Using Quasi-Linear Utility Function</u> <i>Fitri Maya Puspita, Evi Yuliza, Muthia Ulfa</i>	PDF 12-15
<u>2D Groundwater Depth for Analysis of The Zone Unconfined Aquifer</u> <i>M Juandi, Muh Sarkowi</i>	PDF 16-19
<u>The Scheme of 10th Order Implicit Runge-Kutta Method to Solve the First Order of Initial Value Problems</u> <i>Z Bahri, L Zakaria, Syamsudhuha Syamsudhuha</i>	PDF 20-24
<u>Strengthening of Nurul Ilmi Mosque with Concrete Jacketing</u> <i>Fauzan Fauzan, Febrin Anas Ismail, Siska Apriwelni, Imelia Faradiza, Zev Al Jauhari</i>	PDF 25-29
<u>A Model-Based Simulator for Content Delivery Network using SimEvents MATLAB-Simulink</u> <i>Erwin Harahap, Ichi Sukarsih, Gani Gunawan, M Yusuf Fajar, Deni Darmawan, Hiroaki Nishi</i>	PDF 30-33
<u>The influence of magnetic field on the growth of tomato (Lycopersicum esculentum) infected with Fusarium oxysporum</u> <i>Rochmah Agustrina, Endang Nurcahyani, Eko Pramono, Ika Listiana, Eko Nastiti</i>	PDF 34-37
<u>Social Media Used in Higher Education: A Literature Review of Theoretical Models</u> <i>Waleed Mugahed Al-Rahmi, Norma Alias, Mohd Shahizan</i>	PDF 38-42
<u>Internet Traffic Measurement: Trends and Impact to Campus Network</u> <i>Gigih Forda Nama, M. Komarudin, Mardiana Mardiana, R Arum Setiapriadi, Hery Dian Septama, Meizano Ardhi Muhammad, Titin Yulianti</i>	PDF 43-48
<u>Support Vector Machine (SVM) For Toddler's Nutritional Classification in Palu City</u> <i>Andi Hendra, Gazali Gazali</i>	PDF 49-53
<u>Surface Roughness Values of Magnesium Alloy AZ31 When Turning by Using Rotary Cutting Tool</u> <i>Gusri Akhyar, Suryadiwansa Harun, Arinal Hamni</i>	PDF 54-59
<u>Library Automation Systems Integration (Case: ELIB and SLiMS)</u> <i>Meizano Ardhi Muhammad, Mardiana Mardiana</i>	PDF 60-64
<u>The Shoreline Retreat and Spatial Analysis over the Coastal Water of Belawan</u> <i>A. Perwira Mulia Tarigan, Wiwin Nurzanah</i>	PDF 65-69

Internet Traffic Measurement: Trends and Impact to Campus Network

Gigih Forda Nama¹, M. Komarudin¹, Mardiana¹, R. Arum Setia Priadi¹, Hery Dian Septama¹,
Meizano Ardhi Muhammad¹, Titin Yulianti¹

Abstract— University of Lampung (Unila) is an Institution of Higher Education located in Bandar Lampung. Since 2016, Unila has deployed Internet Access Management (IAM) to guarantee the healthiness of the campus network, as well as to enhance the effectiveness of the bandwidth usage. This study focused on internet traffic measurement, conducted in Unila's campus network during February 1 until February 29, 2016. Overall, this study shows user behavior on their application. The trend data of monthly most popular URL Categories accessed by users was; 1st Computers & Technology with 30032328 hits or 39.1%, the 2nd was Search Engines & Portals with 14214611 hits or 18.5%. There were around 30-40 % of internet traffic was use for Streaming Media activity, it proves that the existence of Streaming Media Activity in Campus Network which contribute to network congestion. During a month doing internet measurement, we identify the most active device/user that are the 1st was Aruba Wireless Controller with total traffic flow 40.45%, the 2nd was CCR-1 with 26.2%, the 3rd was CCR-2 with 16.9%, and the 4th was Digital Library Server with total flow was 0.6%. Monthly uplink traffic total flow was 5889.92 GB while downlink traffic total flow was 61041.35 GB. We made a recommendation to Unila management for implementing traffic provisioning especially on streaming media activity specific on access to Google Global Cache (GGC), to overcome network congestion during peak time period on working hours.

Keywords—internet access management, internet traffic measurement; traffic trend

I. INTRODUCTION

University of Lampung (Unila) is an Institution of Higher Education located in Bandar Lampung - the provincial capital of Lampung, Indonesia. Established in September 13, 1965. Unila has deployed Internet Access Management to guarantee the healthiness of the campus network, as well as to enhance the effectiveness of the bandwidth.

Unila has around 6.000 concurrent online users used internet at peak time from almost 27.000 of total Academia Civitas, which brings the difficulty to manage the campus network. As an academic area, the University wants to conducting internet traffic measurements to understand the performance of networks, for troubleshooting needs, to figure out where the faults are, concerned about ensuring the security of networks, also to check whether internet operators are in compliance with the Service Level Agreements (SLA), and to make decisions of how to invest for the deployment of the future Internet infrastructure. Since February 2016, UNILA already developed Internet Access Management (IAM) using SANGFOR™ system, to provide an integrated solution to monitor, manage and accelerate the

Unila's network. IAM can identify and categorize the Internet resources by comprehensive reports, so Administrator capable to visualize the Internet usage status and filter the non-work

related websites and applications. It is very important to isolate the students from the disruptive Internet content such as pornography, violence and gambling. In addition, young students use P2P download softwares and video streaming actively should be warned, which consumes loads of bandwidth and causes network congestion to other critical applications.

This paper presents an internet traffic measurement of Unila campus network, traffic statistics, website browsing statistics, p2p activity, most active users, and application flow speed trend comparison. We collect the internet activity data since February 1, 2016 until February 29, 2016 (a month) on Campus networks. The aims of the internet measurement analysis are (1) To classify the type of application that affects the network performance (2) To analyze user behavior based in type of application. Section 2 describes the several literature review on internet measurement. Section 3 introduces the technique and monitoring tools that used in this study. Section 4 discusses on analysis of result. Finally the conclusion of this work is described in Section 5.

II. RELATED WORKS

Network traffic measurement provides an Administrator network to understand the traffic flow behavior in term of throughput, latency, speed, and packet data transmission. By using specialized network measurement hardware or software, online or offline measurement, an administrator network can collect more information about packets transmission on their network [1] [2]. Based on research of internet user behavior by a group of researcher from Lund University, Sweden, they categorized application into 7 categories that are [3] web browsing, multimedia streaming, Peer to Peer (P2P), file transfer, game online, messaging and collaboration, and secure session. The network administrator should know exactly which applications/users are consuming the most of network bandwidth resource [4]. A study on mature of IEEE 802.11 WLAN campus at Darmouth College, USA found that the applications used on the WLAN changed affectedly. Initial WLAN usage was majoring by Web Traffic; but the study shows significant increases especially in P2P, streaming multimedia, and voice over IP (VoIP) traffic [5]. An increase in the percentage of P2P traffic and multimedia and inconsistent trend for Web traffic can be explained by the increasing complexity and overall size of Web pages that include more audio, images and video elements [6]. Nowadays network operator are faced with rapidly growing of video traffic that cause a main source of congestion in their networks. In order to reduce congestion, N. Khan, on their work [7], timely video rate adaptation is required at the Radio Access Network (RAN).

¹Department of Informatics Engineering, Universitas Lampung, Bandar Lampung, Indonesia (corresponding author phone: +6285289774152; e-mail:gigih@eng.unila.ac.id)

Aaron et al on their works paper [8], has made a deep packet trace analysis of two wireless network environment that place separately and still parts of campus network, with total observation time was for 3 days to gathering the data traffic for total 32,278 unique device. They get the trends of handhelds usage device connected to Wireless including UDP data transactions, also HTTP protocol with high traffic volume transactions, and video traffic. Security performance in wireless LAN already shown on works [9] [10] [11] [12] [13] [14] [15], Poonam Jindal et al on works [9] presented their experiments result that have carried out comprehensively about the performance evaluation of network security in the 802.11 WLAN protocol. Ye Wen on works [16] describe the evaluation of wireless channel utilization at Guangdong Mobile in Guangdong province.

Gigih, et al, [17] on their research already investigate the performance analysis of Aruba™ Wireless Local Area Network at University of Lampung, on this paper explain that IT units had developed wireless infrastructure using Aruba Technology since March 2014, they introduce a wireless performance analysis based on airwave application, with 1 year of data report they gathered network activity on each Aruba AP such as usage average, clients average. On paper [18] [19] [20] [21] [22] describe the usage of open source application for system monitoring. On paper [23] describe it is very important to implementing High Availability (HA) on a network.

III. INTERNET ACCESS MANAGEMENT NETWORK TOPOLOGY

Fig.1 shown Unila's Internet Access Management topology, on data center (DC), already installed Aruba Controller 7210 series and ClearPass System on dedicated server. Aruba Controller policy system work to manage the role of platform provides and device based network control access for Unila wireless user, and communicate with RADIUS system as Active Directory User (user profiling and also posture assessment, on boarding profile, guest access profile), and a comprehensive context-based system policy engine. ClearPass use the database user from radius server on Unila's private cloud, radius act as SSO user database backend for other academic application.

Beside Aruba Controller, there is a DMZ server that monitored by IAM, the main purpose of our DMZ server is to provide another layer of security for Public Server behind DMZ system. If a rogue actor is able to gathering the access to services located in DMZ, they will not be able to get full access to the main part of the network. Some critical public server placed behind DMZ such Unila's Web Server, Mail Server, Domain Name System (DNS) server, Academic Information System, etc. DMZ also has a notification that remainder of the network to be protected if a rogue actor or hacker is able to succeed in attacking any of the servers. Any Public server that is placed behind DMZ server have limited connectivity to other hosts that solely reside within the internal network. On Fig. 1, there also 2 Cloud Core Router that act as internet router for Faculty member, this both router installed to serve whole users connected through Campus LAN cable, we split the router into 2 router to distribute the traffic load. There were Cloud Core Router 1 (CCR1) and Cloud Core Router 2 (CCR2), CCR1 is serving total 4 Faculty, and CCR2 also serve 4 Faculty. The end node of IAM implementation topology is Border Gateway Protocol (BGP), BGP communicate using the Transmission Control Protocol (TCP) and publish Unila's network prefix

(IPv4 and IPv6 prefix) and Autonomous Number (ASN) to upstream provider, besides running BGP services the device is also act as public router for all server that placed on Data Center.

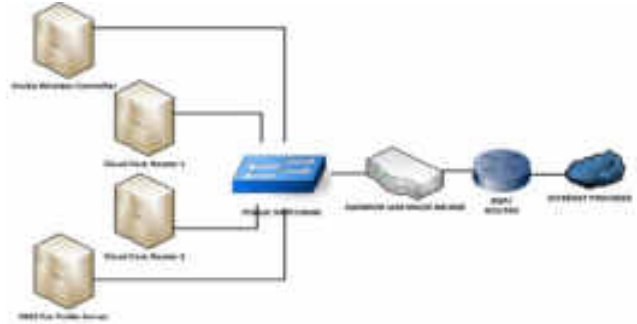


Fig 1. Unila's Internet Access Management topology.

Sangfor™ Internet Access Management (IAM) installed on Bridge mode deployment connecting between Unila's public server/routers and BGP/Public Router. We also configure IAM bridge IP or manage port IP for controlling device, whereby the device connected to network and take over the functionality of another equipment with less or no user intervention.

IV. INTERNET TRAFFIC MEASUREMENT ANALYSIS

A. Daily Internet Traffic Trend

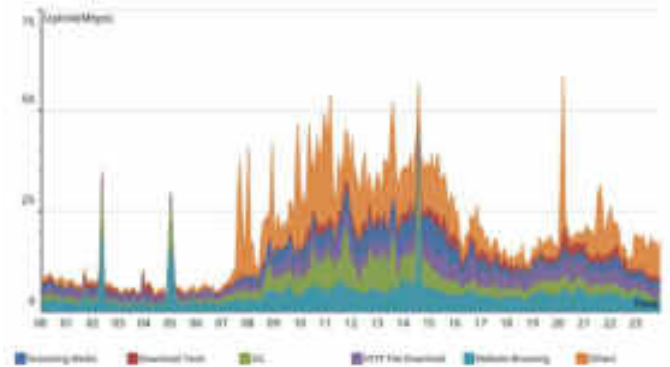


Fig 2. Daily application Uplink flow speed trend comparison overlaid graph

Fig 2. Shown the trend of daily uplink usage that was capture on February 24, 2016, as we can see the uplink traffic will start increase during the working hours (08.00-16.00). The peak time held on 11.00 AM until 3 PM.

Tabel 1 Daily Outbound App Distribution

	Application	Peak	Avg.	Total	%
1	Streaming Media	8.35Mb/s	2.26Mb/s	23.80GB	11.18%
2	Download Tools	5.03Mb/s	1.35Mb/s	14.22GB	6.68%
3	SSL	15.02M	3.04Mb/s	32.11GB	15.09%
4	HTTP File Download	7.68Mb/s	2.85Mb/s	30.02GB	14.1%
5	Website Browsing	22.10M b/s	4.04Mb/s	42.61GB	20.02%
6	Others	39.06M	6.65Mb/s	70.08GB	32.93%
7	ALL	-	20.18M b/s	212.84GB	100%

Table 1 explains the trend data of daily uplink traffic on February 24, 2016. The most consumed traffic application was streaming media, with Peak Rate **8.35 Mb/s**, Average Rate **2.26 Mb/s**, and total flow **23.80 GB** data or equal to **11.18%** from total uplink traffic.

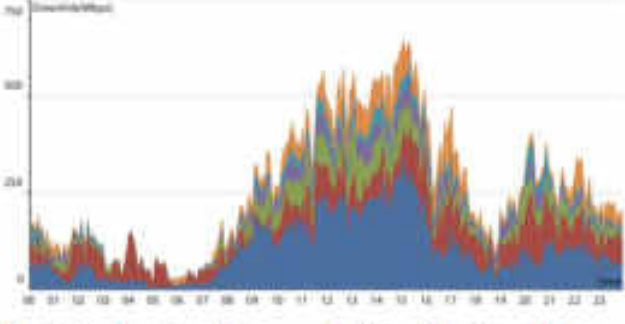


Fig 3. Daily application Downlink flow speed trend comparison overlaid graph

Fig 3. Shown the trend of daily Downlink usage that was capture on February 24, 2016, same with uplink traffic, we can see that the downlink traffic will start increase during the working hours (08.00-16.00). The peak time held on 11.00 AM until 3 PM.

Tabel 2. Daily Inbound App Distribution

Application	Peak Rate	Avg. Rate	Total Flow	%
1 Streaming Media	337.38M b/s	98.90 Mb/s	1043.04 GB	38.64 %
2 Download Tools	176.99M b/s	55.09 Mb/s	581.04 GB	21.53 %
3 SSL	141.29M b/s	31.87 Mb/s	336.08 GB	12.45 %
4 HTTP File Download	68.63Mb/s	19.99 Mb/s	210.82 GB	7.81 %
5 Website Browsing	61.93Mb/s	15.59 Mb/s	164.46 GB	6.09 %
6 Others	128.42M b/s	34.48 Mb/s	363.66 GB	13.47 %
7 ALL	-	255.92 Mb/s	2699.11 GB	100%

Table 2, shown the trend data of daily downlink traffic on February 24, 2016. The most consumed traffic application was streaming media, with Peak Rate **337.38 Mb/s**, Average Rate **98.90 Mb/s**, and total flow **1043.04 GB** data or equal to **38.64%** from total uplink traffic. Total flow for daily usage was **2699.11 GB**. During peak time, users frequently complain feeling difficult to access the internet [24], this happen because almost **40%** bandwidth flow was used for video streaming.

Table 3. Daily Most Popular URL

	Website Browsing	Application Type	Cou nts	Perc ent
1	www.google.com	Search Engines & Portals	104960	3.3%
2	*.unila.ac.id	Computers & Technology	88932	2.8%
3	graph.facebook.com	Social Networking	80502	2.5%
4	r3---sn-2b5njvh-jb3e.googlevideo.c	Streaming Media &	64739	2%
5	r1---sn-2b5njvh-jb3e.googlevideo.c	Streaming Media &	64098	2%
6	r2---sn-2b5njvh-jb3e.googlevideo.c	Streaming Media & Downloads	61264	1.9%

Table III, shown the daily most popular url, search engine google was the most popular url accessed by users, the other was official Unila website, facebook, and Google Global Cache (GGC).

B. Monthly Internet Traffic Trend

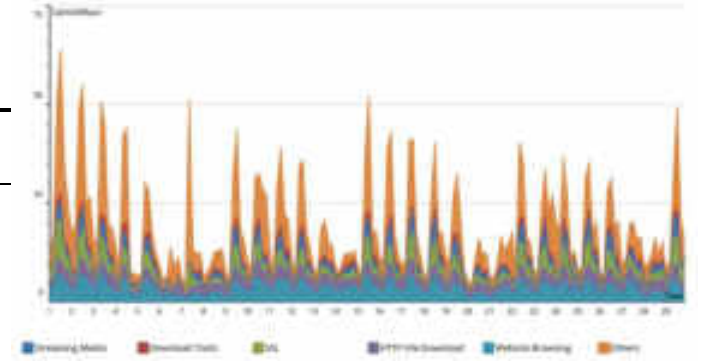


Fig 4. Monthly application Uplink flow speed trend comparison overlaid graph

Fig 4. Shown the trend of monthly uplink usage that was capture since February 1, until February 29, 2016, as we can see the maximum uplink traffic was held on **Monday February 1, 2016**.

Tabel 3. Monthly Outbound App Distribution

Application	Peak Rate	Avg. Rate	Total Flow	%
1 Streaming Media	5.83M b/s	1.76 Mb/s	538.06 GB	9.14%
2 Download Tools	2.91M b/s	967.07 Kb/s	288.85 GB	4.9%
3 SSL	10.25 Mb/s	2.32 Mb/s	708.86 GB	12.04%
4 HTTP File Download	4.55M b/s	2.48 Mb/s	758.12 GB	12.87%
5 Website Browsing	7.67M b/s	3.62 Mb/s	1106.64 GB	18.79%
6 Others	40.62 Mb/s	8.14 Mb/s	2489.39 GB	42.27%
7 ALL	-	19.26 Mb/s	5889.92 GB	100%

Table 4, shown the trend data of Monthly uplink traffic since February 1 until February 29, 2016. The most consumed traffic application was streaming media, with Peak Rate **5.83 Mb/s**, Average Rate **1.76 Mb/s**, and total flow **538.06 GB** data or equal to **9.14%** from total uplink traffic. Total flow for monthly usage was **5889.92 GB**.

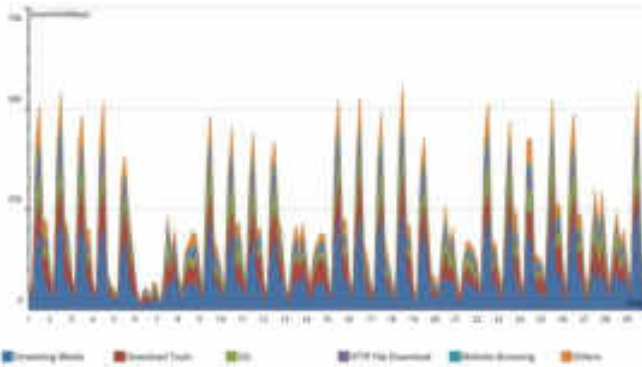


Fig. 5. Monthly application Downlink flow speed trend comparison overlaid graph

Fig 5. Shown the trend of monthly Downlink usage that was capture since February 1, until February 29, 2016, as we can see the maximum uplink traffic was held on **Thursday February 18**, 2016. At this date 6-7, 13-14, 20-21, 27-28 February shown less traffic then other day, because at this date is non-working hours (Saturday and Sunday).

Table 5. Monthly Inbound App Distribution

Application	Peak Rate	Avg. Rate	Total Flow	Percent
1 Streaming Media	252.36 Mb/s	77.80 Mb/s	23795.59 GB	38.98 %
2 Download Tools	104.56 Mb/s	37.56 Mb/s	11487.92 GB	18.82 %
3 SSL	82.10 Mb/s	24.67 Mb/s	7546.62 GB	12.36 %
4 HTTP File Download	57.98 Mb/s	15.45 Mb/s	4724.54 GB	7.74 %
5 Website	44.76 Mb/s	12.61 Mb/s	3857.59 GB	6.32 %
6 Others	103.04 Mb/s	31.48 Mb/s	9629.08 GB	15.77 %
7 ALL	-	199.57 Mb/s	61041.35 GB	100%

Table 5. shown the trend data of Monthly downlink traffic since February 1 until February 29, 2016. The most consumed traffic application was streaming media, with Peak Rate **252.36 Mb/s**, Average Rate **77.80 Mb/s**, and total flow **23795.59 GB** data or equal to **38.98%** from total uplink traffic. Total flow for monthly usage was **61041.35 GB**.

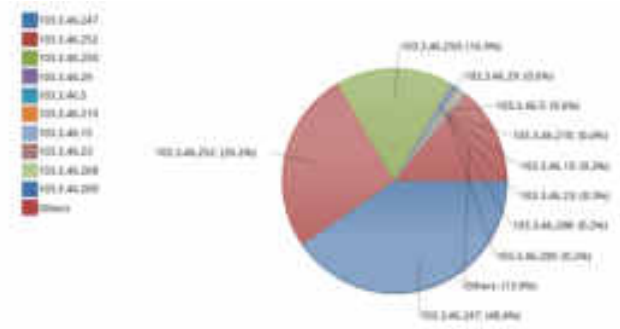


Fig. 6. Most Active Device

Fig. 6. Shown pie chart of most active device/user during February 1 until February 29, 2016. The most active device was **103.46.247** (Aruba Wireless Controller) with total flow was **27044.64 GB**, or **40.4%** from total traffic.

Table 6. Monthly Inbound App Distribution

Host IP	Uplink	Downlink	Total Flow	%
1 103.3.46.247	1449.17 GB	25595.48 GB	27044.64 GB	40.4 %
2 103.3.46.252	1158.02 GB	16353.58 GB	17511.60 GB	26.2 %
3 103.3.46.250	564.58 GB	10772.40 GB	11336.99 GB	16.9 %
4 103.3.46.29	379.15 GB	13.95 GB	393.10 GB	0.6%
5 103.3.46.5	343.93 GB	30.42 GB	374.35 GB	0.6%
6 103.3.46.210	180.63 GB	103.29 GB	283.92 GB	0.4%
7 103.3.46.15	19.56 GB	200.81 GB	220.37 GB	0.3%
8 103.3.46.23	160.39 GB	16.98 GB	177.37 GB	0.3%
9 103.3.46.208	142.86 GB	9.83 GB	152.69 GB	0.2%
10 103.3.46.200	102.40 GB	8.45 GB	110.85 GB	0.2%
11 Others	1389.23 GB	7936.17 GB	9325.40 GB	13.9 %
12 [All Users]	5889.92 GB	61041.35 GB	66931.27 GB	100 %

Table 6, shown the trend data of Monthly Inbound traffic since February 1 until February 29, 2016. The most consumed traffic device/user was Aruba Wireless Controller (**103.3.46.247**) with total flow **40.45%**, and 2nd was CCR1 (**103.3.46.252**) with **26.2%**, the 3rd was CCR2 (**103.3.46.250**) with **16.9%**, the 4th was Digital Library Server (**103.3.46.29**) with total traffic was **393.10 GB** or **0.6%**

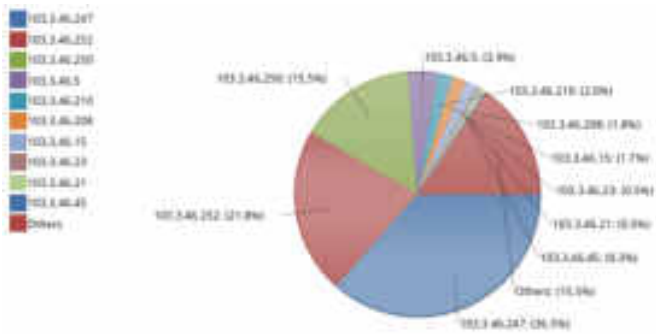


Fig. 7. User Behavior Ranking

Fig. 7. Shown pie chart of Users behavior ranking since February 1 until February 29, 2016. The most user was **103.46.247** (Aruba Wireless Controller) with total **36.5%** from total.

Table 7. User Behavior Ranking

Host IP	Counts	Percent	
1	103.3.46.247	28058475	36.5%
2	103.3.46.252	16809988	21.9%
3	103.3.46.250	11938431	15.5%
4	103.3.46.5	2966146	3.9%
5	103.3.46.210	1498038	2%
6	103.3.46.208	1400041	1.8%
7	103.3.46.15	1326502	1.7%
8	103.3.46.23	403630	0.5%
9	103.3.46.21	379727	0.5%
10	103.3.46.45	162409	0.2%
11	Others	11869916	15.5%
12	[All Users]	76813303	100%

Table 7, shown the trend data of Monthly User Behavior Ranking since February 1 until February 29, 2016. The most active user/device was Aruba Wireless Controller (**103.3.46.247**), with total count **28058475** or **36.5%**, and total count was **76813303**.

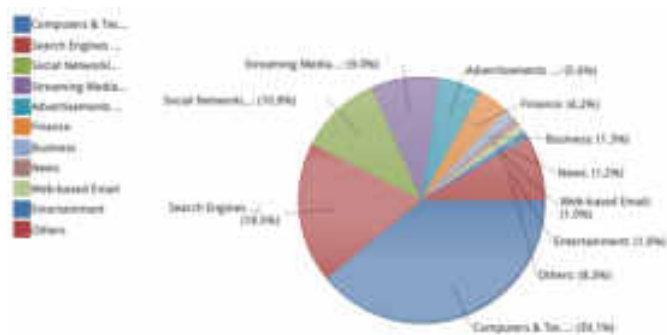


Fig. 8. Application Behavior Ranking

Table 8. Most Popular URL Categories

Application Type	Counts	Percent	
1	Computers & Technology	30032328	39.1%
2	Search Engines & Portals	14214611	18.5%
3	Social Networking	8264092	10.8%
4	Streaming Media & Downloads	6893365	9%
5	Advertisements & Pop-Ups	4292179	5.6%
6	Finance	3154604	4.1%
7	Business	1040108	1.4%
8	News	946049	1.2%
9	Web-based Email	828783	1.1%
10	Entertainment	793993	1%
11	Others	6353191	8.3%
12	Website Browsing	76813303	100%

Fig. 8 and Table 8, shown the trend data of Monthly Most Popular URL Categories since February 1 until February 29, 2016. The most Application Type Category accessed by Unila's users was **Computers & Technology** with **30032328** or **39.1%**, the 2nd was **Search Engines & Portals** with **18.5%**, the 4th was **Streaming Media & Downloads** with **8264092** total count. Total website browsing hit in a month was **76813303** count.

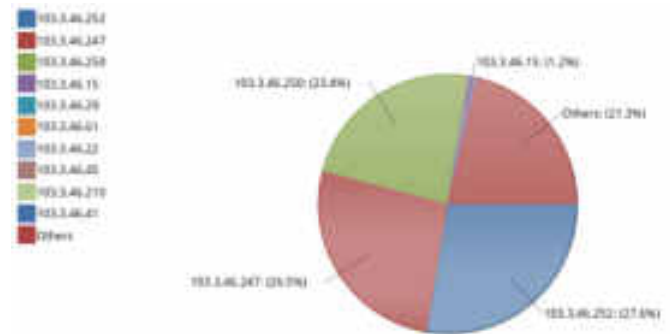


Fig. 9. User Total Flow Peer To Peer (P2P) Ranking

Table 9. Most P2P active users

	Host IP	Uplink	Downlink	Total Flow	Percent
1	103.3.46.252	377.84G B	621.03GB	998.87G B	27.6 %
2	103.3.46.247	351.40G B	608.10GB	959.50G B	26.5 %
3	103.3.46.250	153.35G B	693.25GB	846.60G B	23.4 %
4	103.3.46.15	5.17GB	36.90GB	42.07GB	1.2%
5	103.3.46.29	2.92MB	68.63KB	2.99MB	0%
6	103.3.46.61	1.72MB	795.09KB	2.49MB	0%
7	103.3.46.22	1.70MB	14.82KB	1.72MB	0%
8	103.3.46.45	340.01K B	10.84KB	350.85K B	0%
9	103.3.46.210	301.70K B	12.69KB	314.39K B	0%
10	103.3.46.41	235.76K B	6.36KB	242.12K B	0%
11	Others	378.41G B	391.44GB	769.85G B	21.3 %
12	[All Users]	1266.18 GB	2350.72 GB	3616.90 GB	100 %

Fig. 9 and Table IX, shown the trend data of Monthly Most P2P active users since February 1 until February 29, 2016. The 1st device was CCR1 (103.3.46.252) with total flow was **998.87 GB** or **27.6%**, 2nd was Aruba Wireless Controller with **959.50 GB** or **26.5%**, and the 3rd was CCR2 (103.3.46.250) with **846.60 GB** or **23.4%**.

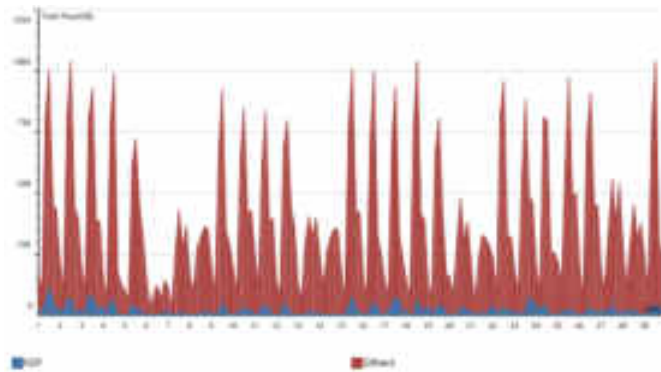


Fig. 10. P2P Application Flow Trend Overlaid Graph

Table 10. P2P Application Flow Trend Overlaid

	Applicati on	Peak Rate	Avg. Rate	Total Flow	Percent
1	P2P	63.41 Mb/s	11.83Mb/s	3616.90 GB	5.4%
2	Others	566.79 Mb/s	207.00M b/s	63314.37 GB	94.6 %
3	ALL	-	218.83M b/s	66931.27 GB	100 %

Fig. 10 and Table 10. shown the trend data of Monthly P2P Application Flow Trend Overlaid since February 1 until February 29, 2016. From the data we can see in a month there were total **3616.90 GB** P2P traffic or total **5.6 %** from total Flow.

V. CONCLUSION

This study focused on Internet Traffic Measurement conducted in University of Lampung Campus Network. Overall, this study shows user (both from wireless or cable connection) behavior on the application. The trend data of Monthly Most Popular URL Categories accessed by Unila's users was Computers & Technology with 30032328 hits or **39.1%**, the 2nd was Search Engines & Portals with **14214611** hits or **18.5%** hits. There were around **30-40 %** of internet traffic flow was use for Streaming Media activity, it proves that the existence of Streaming Media Activity in Campus Network which contribute to network performance degradation. During a month doing internet measurement, we identify the most active device/user identified by Aruba Wireless Controller with total flow **40.45%**, the 2nd was CCR1 with **26.2%**, the 3rd was CCR2 with 16.9%, and the 4th was Digital Library Server with total traffic was 0.6%. Monthly uplink traffic total flow was **5889.92 GB** while downlink traffic Total flow for February, 2016 was **61041.35 GB**. We made a recommendation to Unila management for pay a serious attention especially on Users Streaming Media Activity specific on access to Google Global Cache (GGC) to overcome network congestion during peak time period on working hours, we suggest to implement traffic provisioning of video streaming connections for improving the quality of campus network.

REFERENCES

- [1] Claffy, K. and T. Monk, "What's Next for Internet Data Analysis? Status and Challenges Facing the Community". Proceedings of the IEEE, Vol.85, Issue. 10, 1997.
- [2] Kushida, T. "An Empirical Study Of The Characteristics Of Internet Traffic", Journal Computer Communication, Vol.22, Issue.17, Pp 1607-1618, 1999.
- [3] Kihl, M., C. Lagerstedt, A. Aurelius, P. Odling. "Traffic Analysis And Characterization Of Internet User Behavior". Ultra Modern Telecommunications and Control Systems and Workshops (ICUMT), 2010 International Congress, Pp 224-231, 2010.
- [4] Kotz, D. and K. Essien. "Analysis of a Campus-Wide Network. Wireless Networks", Journal Wireless Network, Vol.11, Issue 1-2, Pp 115-133, 2005.
- [5] T. Henderson, D. Kotz, I. Abyzov. "The Changing Usage of a Mature Campus-Wide Wireless Network". Proceedings of the 10th Annual International Conference on Mobile Computing and Networking, Philadelphia, PA, USA, 2004.
- [6] Halepovic, E., C. Williamson, M. Ghader. "Wireless Data Traffic: A Decade of Change". IEEE Network, Vol. 23, Issue 2, Pp 20-26, 2009.
- [7] N. Khan, M. G. Martini. "QoE-driven multi-user scheduling and rate adaptation with reduced cross-layer signaling for scalable video streaming over LTE wireless systems". EURASIP Journal on Wireless Communications and Networking, 2016(1).
- [8] Aaron Gember et al, "A Comparative Study of Handheld and Non-handheld Traffic in Campus Wi-Fi Networks", PAM 2011, LNCS 6579, pp. 173-183, Springer-Verlag Berlin Heidelberg, 2011.
- [9] Poonam Jindal et al, "Experimental Study to Analyze the Security Performance in Wireless LANs", Journal Wireless Personal Communications, ISSN 0929-6212, 2015.
- [10] Yong-lei liu et al, "SAEW: A Security Assessment and Enhancement System of Wireless Local Area Networks (WLANs)", Wireless Pers Commun (2015) 82:1-19, 2015.
- [11] Jung-San Lee, Pei-Yu Lin, Chin-Chen Chang, "Lightweight Secure Roaming Mechanism Between GPRS/UMTS and Wireless LANs", Journal Wireless Personal Communications Volume 53, Issue 4, pp 569-580, 2010.
- [12] Bharat Singh, Akash Bansal, Sunil Kumar, Anshu Garg, "Analysis for Power Control and Security Architecture for Wireless Ad-Hoc Network", Third International Conference, IC3 2010, Noida, India, August 9-11, Proceedings, pp 205-216, Part II, 2010.

- [13] Rajeev Singh, Teek Parval Sharma, "A Key Hiding Communication Scheme for Enhancing the Wireless LAN Security", *Journal Wireless Personal Communications*, Volume 77, Issue 2, pp 1145-1165, 2014.
- [14] Lei Chen, Narasimha Shashidhar, Shengli Yuan, Ming Yang, "Security in Wireless Metropolitan Area Networks", ISBN 978-3-642-36510-2, Springer Berlin Heidelberg, 2013.
- [15] Alan Holt, Chi-Yu Huang, "Wireless Security", book title 802.11 Wireless Networks, pp 101-110, ISBN 978-1-84996-274-2, 2010.
- [16] Ye Wen, Chen Jian, "Applying rapid fluctuation model to analysis of wireless channel utilization in GSM networks", *Control Conference (CCC)*, 2010 29th Chinese, Beijing, China, 2010, pp- 4228-4235, 2010.
- [17] G. F. Nama, M. Komarudin, H. D. Septama, "Performance Analysis of Aruba™ Wireless Local Area Network Lampung University", 2015 International Conference on Science in Information Technology (ICSITech), pp 41-46, Yogyakarta, Indonesia, 2015.
- [18] G. F. Nama, M. Ulvan, A. Ulvan, A. M. Hanafi, "Design and Implementation of Web-Based Geographic Information System for Public Services in Bandar Lampung City - Indonesia", 2015 International Conference on Science in Information Technology (ICSITech), pp 270-275, Yogyakarta, Indonesia, 2015.
- [19] D. Despa, A. Kurniawan, M. Komarudin, Mardiana, G. F. Nama, "Smart monitoring of electrical quantities based on single board computer BCM2835", 2nd International Conference on Information Technology, Computer, and Electrical Engineering, pp 315-320, Indonesia, 2015.
- [20] G. F. Nama, M Komarudin, Hanang. P, Mardiana, H. D. Septama, "Electricity, Temperature, and Network Utilization Monitoring at Lampung University Data Centre Using Low Cost Low Power Single Board Mini Computer", *Regional Conference On Computer Information Engineering*, Indonesia, pp. 184-189, 2014.
- [21] G. F. Nama, H. D. Septama, L. Hakim, M. Komarudin, "Design and Implementation of Internet Connection System Monitoring Lampung University based on Mini Single Board Computer BCM2835", *Seminar National Science Technology*, pp. 73-83, 2014.
- [22] G. F. Nama, H. D. Septama, "Analysis the Performance of VoIP Services on Wireless LAN Network (IEEE 802.11) University of Lampung", *Journal Research of Information Technology and Communications (MTI)*, Volume 5, Issue 1, 2014.
- [23] H. D. Septama, A. Ulvan, G. F. Nama, M. Ulvan, R. Bestak, "Dynamic tunnel switching using network functions visualization for HA system failover", 2015 International Conference on Science in Information Technology (ICSITech), pp 259-263, Yogyakarta, Indonesia, 2015.
- [24] UPT. TIK. "Helpdesk Report", University of Lampung documents, 2016.