

# Effect of Sand Faction Percentage in Soil Mixture towards Soil Support Power for Dam Construction

*by Lusmeilia Afriani*

---

**Submission date:** 28-Jan-2022 01:29AM (UTC+0700)

**Submission ID:** 1749419641

**File name:** Power\_for\_Dam\_Construction\_Lusmeilia\_Afriani\_Ryzal\_Perdana.docx (215.55K)

**Word count:** 6259

**Character count:** 32679

## 1 Research Article

# 2 Effect of Sand Fraction Percentage in Soil Mixture towards Soil 3 Support Power for Dam Construction

4 Lusmeilia Afriani,<sup>1</sup> Ryzal Perdana<sup>2</sup>

5 <sup>1</sup> Department of Civil Engineering, Lampung University, 35145, Indonesia.

6 <sup>2</sup> Department of Educational Science, Universitas Lampung, 35145, Indonesia.

7 Correspondence should be addressed to Lusmeilia Afriani; afriani\_L@eng.unila.ac.id

## 8 Abstract

9 Knowledge of soil, which is an essential construction material, has great importance for dam  
10 construction. The level of density and carrying capacity of the soil is very important for  
11 consideration in the planning and designing stages of civil construction, considering the soil  
12 functions as a means to withstand the load or structure built on it. Stabilization using sand soil  
13 material is one of the ways to meet the strength requirements of soil carrying capacity when  
14 there is no suitable soil material found in the nearby area. This paper aims to elucidate the  
15 physical properties of clay using a mixture of fine sand to reduce the risk of shrinkage when  
16 used for dam construction. Several analyses were undertaken to find out the effect of the fine  
17 sand percentage in the clay mixture to decrease the swelling test value and permeability test  
18 of the soil carrying capacity for dam construction. The types of soil tested were silt clays taken  
19 from Tritisan sub-district of East Lampung which was then stabilized using fine sand material  
20 from Central Lampung, Indonesia. This research was conducted using a mixture of sand, with  
21 a percentage of 10%, 20%, 30%, and 40%. Subgrade tests such as CBR, permeability tests  
22 were also undertaken to investigate other soil properties from each sample. The results indicate  
23 that a higher percentage of sand causes decreasing water content. Thus, the value of the  
24 carrying capacity of the soil is increasing. The findings can be used to facilitate the increasing  
25 use of clay mixtures with the percentage of fine sand in case suitable clay material cannot be  
26 found around dam construction sites. The implications with suggestions for future research are  
27 also discussed.

28 Keywords: sand fraction, soil mixture, construction

## 29 Introduction

30 Knowledge of soil, which is a basic construction material, has great importance for dam  
31 construction. It becomes the key factor of civilizations (Albaladejo, Diaz- Pereira, and De  
32 Vente, 2020). In the history of geology, there is a close relationship between life and water  
33 from the perspective of the land and aquatic environment (Kocheeva, Roldugin, Katz, and  
34 Manankova, 2019). The soil is the critical element of life support systems because it delivers  
35 several ecosystem goods and services (Neina, 2019). Soil properties diverse considerably under  
36 tillage type, intensity, different crops, fertilizer and application rates (Haruna & Nkongolo,  
37 2013). It is well known that dam is one of irrigation infrastructure buildings with a type of weir

structure that is affected by the fluctuating flow rates and water volumes of the river. Soil water evaporation curves both represent the laws of water content variation in the natural state (Lei, Liu, and Zhu, 2021). It constructs vital environmental protection and water management (Cui, Tian, Yang, Wen, and Khan, 2020). The occurrence of instability and the derailment of dam construction can occur when the strength of the structure is not in accordance with shear strength of the soil on the related site. It also gives nutrients on the sediments of the reservoir (Zhang, Liao, Pei, Lu, Xu., and Wang, 2019). Besides the above things, however, many factors can cause failures and cracks in a dam body such as floods, earthquakes or explosions, human activities, and terrorist attacks against the dam (Poudel, Abbey, and Ngambi, 2017). Since dam is a part of geotechnical engineering in civil engineering, if a failure occurs that finally causes damage, it can be repaired by analyzing and designing the stability of the dam, including the factors that affect the stability of the dam (Behzad Kalantari and Farjad Nazeri, 2016). It is closely related to the decrease of taxa downstream and uplifts the biomass (Wu et al., 2019).

In dam planning, it is generally accepted that one of the surveys that must be carried out is a material investigation (Dam Safety Center, 2003). One of the ways is by assessing the problems of dam constructions, which are built on clay in Indonesia and clay soil is spread almost in all areas of Indonesia. Regarding the dam construction, the original compacted soil is usually used as a core. In contrast, clay soil material is needed because it is impermeable so that the dam can store water to serve a function as a reservoir. Therefore, it leads to decreased upstream and downstream considerably (Jiang, Lu, Moran, Calvi, Dutra., and Li, 2018).

## 8 Soil Stabilization

Generally, soil stabilization refers to a particular way of improving soil properties through blending and mixing other materials. These improvements include the increasing dry unit weight, bearing capabilities, volume changes, the performance of *in situ* subsoils, sands, and other waste materials to strengthen road surfaces and other geotechnical applications (Firoozi et al., 2017). According to Bowles (1984), if the soil found in a site is loose or very easily stressed, or if it has an inappropriate consistency index, it has very high permeability or other undesirable traits that are not suitable for a development project. Soil stabilization must be carried out to resolve the above issues. In general, the method used to stabilize soil consists of one or a combination of the following processes (Bowles, 1984):

- a. Mechanical, namely compaction with various types of mechanical equipment such as a roller machine, dropping heavy objects, explosion, static pressure, texture, freezing, heating and so on;
- b. Additive, namely the addition of gravel to cohesive soils, loam for grained soil and chemical mixers such as cement, lime, volcanic ash/coal, lime and/or cement, asphalt cement, sodium, and calcium chloride, paper mill waste, and others.

The methods or ways to improve soil properties are also very dependent on curing time; this is because, during the process of improving soil properties, chemical processes occur, which require time for chemicals to present in the additive to react.

However, the carrying capacity of the clay is often criticized for its low capacity. Clay soil is generally a poor subgrade due to its low shear strength, so that the construction of a structure on this soil layer always faces several problems such as low bearing capacity and large shrinkage properties. Therefore, it is commonly suggested that optimal water content plays an important role in getting the maximum density level. In addition to impermeability needs,

because a large number of soil volumes are needed, the source of the material is also one of the important things to take into account.

Thus, the properties of clay are still not completely understood. In other words, evidence on this question is presently inconclusive. Therefore, this paper aims to elucidate the physical properties of this type of soil using a mixture of fine sand to reduce the risk of shrinkage when used for dam construction.

## Clay

Soil is a collection of minerals, organic matter, and relatively loose deposits, which are located on bedrock (Hardrock) (Hardiyatmo, 1999). It is a collection of solid parts that are not bound to one another (some of which may be organic material) and the cavities between the parts containing air and water (Verhoef, 1994). According to Bowles (1984), soil is a mixture of particles consisting of one or all of the following types:

- a. Boulders are large pieces of rock, usually larger than 250 to 300 mm and ranging from of 150 mm to 250 mm in size; these rock fragments are called cobbles/pebbles;
- b. Gravel is a rock particle measuring 5 from mm to 150 mm;
- c. Sand is a rock particle measuring from 0.074 mm to 5 mm, which ranges from coarse with a size of 3 mm to 5 mm to fine material measuring <1 mm;
- d. Silt is rock particles measuring from 0.002 mm to 0.0074 mm;
- e. Clays are mineral particles smaller than 0.005 mm which are the main source of cohesion in cohesive soils;
- f. Colloids are mineral particles that are stationary and smaller than 0.001 mm.

Several soil physical and biological properties, e.g., bulk density, aggregate stability and soil microbial biomass are related to the content and turnover of soil organic matter (SOM). Organic matter and clay are intimately linked by a range of physical, chemical and biological processes, playing a crucial role in the formation of soil aggregates, affecting stability at different scales (Totsche et al., 2018).

Clay soils, which are very hard soil types in a dry state, are plastic at moderate water levels, whereas in higher water conditions, the clay will be sticky (cohesive) and very soft (Terzaghi and Peck, 1987). It is the main concrete influencing dam safety operation (Fu, Su, and Wen, 2020). The clay fraction of silica by 59% can result in crystallinity and stability of temperature (Charai, Sghiouri, Mezhab, Karkri., and Hammouti, 2020). It mostly contains palygorskite, kaolin, and sepiolite minerals (Wang, Wang, Huang, and Tang, 2020). They can be used to purify water and industrial substances (Ihekwe et al., 2020). The properties possessed by clay are as follows (Hardiyatmo, 1999):

- a. Fine-grain size, which is less than 0.002 mm;
- b. Low permeability;
- c. High capillary water rise;
- d. Very cohesive;
- e. High levels of shrinkage;
- f. The process of consolidation is slow.

Soft clay soil is soil containing clay minerals and has a high-water content, which causes low shear strength. Soft clay, also known as expansive clay, is a type of clay that is classified into types of soil that have a development value and a large shrinkage value, so that it can cause damage to the structures built on it. Due to the amount of activity value (A) of clay soil, the size of clay activity value is influenced by the soil plasticity index value (PI). Potential

development of a type of soil is based on its plasticity index value (PI). Clay soils that can be categorized into expansive clay soils are those having very high development potential limits with the plasticity index value (PI) of  $> 35\%$  (Charai, Sghouri, Mezhab, Karkri., and Hammouti, 2020).

Thus, the properties of clay are still not completely understood. In other words, evidence on this question is presently inconclusive. Sand is a naturally occurring granular material. Because of its high load bearing capacity in confined condition, sand could be used as a filler material. It could be used in varying proportions as admixture to cohesive soils altering the properties of plasticity, compaction and strength of the mixtures. Therefore, this paper aims to elucidate the physical properties of this type of soil using a mixture of fine sand to reduce the risk of shrinkage when used for dam construction.

## Materials and Methods

### Research Sites

This study focused on soil samples taken from Pringsewu and Margatiga Sub-districts in East Lampung Regency, Indonesia where dam construction was taking place.

### Soil Compaction

Compaction is an attempt to increase the density of the soil by releasing air to the soil porous, which is usually done using mechanical energy. In the field, compaction effort is related to the amount of runoff from a roller machine, or something else that has the same principle for a certain volume of soil. In general, soil compaction, which is carried out in the laboratory, consists of two types, namely the AASHTO T 99 Proctor Standard (ASTM D 689) and Modified Proctor, to obtain a greater California Bearing Ratio (CBR) value. Undertaking a soil compaction test will make a connection between water content and volume weight. According to Bowles (1984), the benefits derived from compaction of soil include:

- a. Reduced subsidence, i.e., vertical movement within the soil mass itself due to reduced number of pores;
- b. Increasing soil strength;
- c. Decreasing volume due to reduced water content during drying

### California Bearing Ratio (CBR)

California Bearing Ratio (CBR), which was first invented between 1922-1930 in California by O.J. Porter, is an empirical method for measuring soil density values. This method combines an experiment of loading in the laboratory or in the field with an empirical plan to determine the thickness of the pavement layer. A CBR test must first be carried out to get the CBR value. This test, a comparison between test loads with standard load and expressed as a percent, was developed around the 1930s in the laboratory of the Materials Research Department of the California Division of Highway, USA

### Dam Construction

According to Indonesian Government Regulation Number 37 Article 1 of 2010 about Dams, a dam is a building made of earth, rock, concrete, and/or stone pairs to hold and store water. This is also built to hold and accommodate mine waste (tailings) or collect mud to form a reservoir.



A dam serves to function as a water catcher and saves the water during the rainy season when the river water flows in large quantities and exceeds the needs either for use, irrigation, drinking water, industry, or others. In the Guidelines and General Criteria of Dam Design (2003), the type of dam based on its function can be divided into:

- a. water reservoir dam;
- b. diversion dam;
- c. flood control dam;
- d. Multipurpose dam.

Based on the material, dams are classified into:

- a. concrete gravity dam;
- b. concrete dam with buttresses;
- c. arch dam;
- d. landfill dam;
- e. rockfill dams.

During the planning and design stage, site selection and type of dam must be considered very carefully. The factors that should be taken into account when selecting the type of dam are as follows:

- a. The purpose of the dam building;
- b. Protection against overflow;
- c. Limitations on building expenses;
- d. Problems encountered in flow diversion during construction;
- e. Easy access to dam locations;
- f. Availability of labor and equipment;
- g. Physical factors of dam location;
- h. Dam safety.

In other words, it is important to conduct surveys and investigations to determine the type and design of a dam that will be built. This is to avoid construction failure that can cause disaster. During the construction stage, several dam safety issues could be encountered, particularly the risk of piping failure of the existing dam due to foundation excavation for the dam construction. The variability in geology site, foundation conditions, construction materials, and site conditions of the project added to the risk of the project (Khor and Shamsuddin, 2019).

The material investigation must be carried out to assess and determine the physical and mechanical properties of the dam material and the availability of material reserves. The backfill dam material test is carried out to investigate the physical properties, dynamic properties, and rock tests. The test is carried out on waterproof material, semi-waterproof material, and water-graduated material. The need for this type of test is listed in the Guidelines, General Criteria, and Design of Dams (2003) for design and construction of reservoirs.

## Sampling

The soil was sampled using a 4-inch tube with a length of 50 cm from three different locations. The tube was inserted into the ground at a depth of 50 cm. Plastic covers were used as soon as the earthen tube was removed to maintain its original moisture content. Soil samples were then taken to the laboratory for basic tests to obtain the basic properties that were later used as primary data, as shown in Figure 1 and Figure 2.

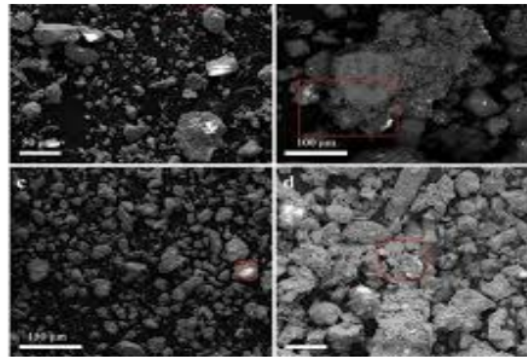


Figure 1. A soil sample from 3 different locations

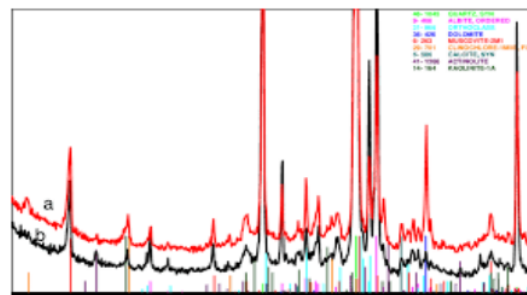


Figure 2. Soil XRD Findings

## Equipment

The equipment used in this study were tools for filter analysis test (to assess for information and apply logic to get patterns of the study), specific gravity test (to see the concentration of all present particles), water content test (divide the mass of water by dry soil mass multiplied by 100), consistency limit test (control and identify small quantities of impurity in the substance), modified Proctor test (compaction of soil by its types and properties according to the change of moisture content, dry density and its relation), CBR test which belongs to a penetration test applied to evaluate road and pavement's strength. Its results are used by the curve to find out the layers' thickness of pavement and its component for flexible design (a cylindrical steel mold and by using a cylindrical steel plunger to force it with nominal diameter of 50 mm at a controlled rate), and other equipment to test the thickness of layers (Atterberg Limits, Calcium Carbonate Content, Expansion and Swell of Soil) in the Soil Mechanical Laboratory, Department of Civil Engineering, University of Lampung, which has been suitable with the standardization of the American Society for Testing Materials (ASTM) by D698 or AASHTO T99 and modified ASTM D1557 and AASHTO T180. To test the soil mixture, three tests were applied including; permeability test (to know the ability of porous media), compaction test (to identify soil compaction properties), and pinhole test (to find out clay soils dispersity).

## Method of Mixing Soil and Sand Samples

This research was conducted using sand as a mixture with variations in the percentage of sand of 10%, 20%, 30%, and 40% (ASTM International, 2015).

## Data Processing and Analysis

Basic soil tests such as water content, soil content, Atterberg limit, compaction, permeability, swelling, and triaxial were undertaken at the Soil Mechanical Laboratory of the Department of Civil Engineering, the University of Lampung following ASTM by D698 or AASHTO T99 and modified ASTM D1557 and AASHTO T180. The ASTM Standard is used to develop and publish voluntary consensus of technical standard for various products, materials, services, and system (ASTM International, 2015).

### Permeability Test

Permeability illustrates the ability of porous media, which allows fluid to flow. The flow of water through granular soil or rock mass is a common concern in geotechnical engineering. It is defined as the movement of fluid by porous media linked with materials' durability (Wang, Liu, Feng, et al., 2016). The samples were tested using a falling head procedure with the coefficient of permeability ( $k$ ) as the output. This experiment is a common laboratory testing method used to determine the permeability of fine-grained soils with intermediate and low permeability such as silts and clays. The falling head permeability test involves the flow of water through a relatively short soil sample connected to a standpipe, which provides the water head, which also allows measuring the volume of water passing through the sample. Firstly, saturated and standpipes soil samples were filled with de-aired water to a given level. The test was then started by allowing water to flow through the soil sample until it reached a given lower limit. The time required for the water to drop from the upper to the lower level was recorded. The steps were repeated for a couple of times in which the recorded times should be within an allowable variation of about 10% otherwise, the test was considered as a failure. The method was used to look at the coefficient of permeability.

### Compaction Test

A standard proctor compaction test was undertaken to find out the soil compaction properties where it has the optimal water content at which soil can reach its maximum dry density. It recognized and established guidelines to provide criteria for performance and methodologies test for compaction (ASTM International, 2015). The output of this test would then be used to make CBR test samples. Samples were soaked for four days to see the changes of volume, and a dial gauge was installed to measure the volume changes. Shrinkage value could be read from the swelling value measured by the dial gauge.

### Pinhole Test

A pinhole test was conducted to investigate the dispersity of clay soils. The piping failures of a number of homogeneous earth dams, erosion along channel or canal banks, and rainfall erosion of earthen structures have been attributed to the colloidal erosion along cracks or other flow channels formed in masses of dispersive clay from Tritisan sub-district of East Lampung, Indonesia. The test was undertaken by flowing water horizontally with 50 mm of air pressure on soil samples, and a hole was made with 1 mm of diameter. It was firstly proposed as a tool to evaluate susceptibility of compacted fine-grained soils to pipping by using a flow of passing water (Sherard et al, 1976). Also, the pinhole test, Emerson crumb test, was conducted. Emerson's crumb test provided the potential of clay soils erodibility by using ASTM D4647 / D4647M - 13(2020) as the Standard Test Methods for Identification and Classification of Dispersive Clay Soils by the Pinhole Test. The test consisted of a cubical specimen of about 15 mm on a side or selecting an air-dried soil crumb of about equal volume. The specimen was then placed in distilled water. As the soil began to hydrate, the tendency for colloidal-sized particles to deflocculated and suspend was observed.



## Results and Discussion

Preliminary research, including soil properties testing, soil physical properties, and compaction testing was conducted. The data obtained in this study came from a series of filter analysis tests carried out in the laboratory, then presented systematically and clearly so that it could be analyzed. The data obtained were specific gravity, liquid limit and plastic limit, MDD, OMC, UCS, and CBR values without curing and UCS and curing CBR. From the results of the preliminary survey, dam body materials could be obtained from the surrounding area in terms of volume. The physical properties themselves did not meet the technical requirements for a dam Biochemical Oxygen Demand (BOD) although the soil material from surrounding area could be used as the mixture of fine sand. The analysis results of soil samples taken from the study sites conducted in the laboratory can be seen in Table 1.

Table 1. Soil sample testing result

No	Sample Code	Depth (m)	Density				Triaxial UU			
			MDD	OMC	MBD	Joule	C	W	Density	Gs
			(Kn/m <sup>3</sup> )	(%)	(Kn/m <sup>3</sup> )	(degree)	(kPa)	%	(Kn/m <sup>3</sup> )	
1	AL.3	01.40	1.190	37.16	1.632	13.50	1.61	31.94	1.62	2.57
2	AL.6	01.00-01.40	1.190	47.28	1.753	16.02	1.23	44.76	1.58	2.56
3	AL.7	01.40	1.160	38.09	1.602	20.92	0.37	37.99	1.59	2.59
4	AL.7	02.30	1.160	39.58	1.619	16.20	1.29	37.33	1.68	2.57
5	AL.8	01.50	1.280	39.85	1.790	16.14	1.32	36.37	1.69	2.58
6	AL.8	02.60	1.250	37.27	1.716	10.13	2.24	38.08	1.74	2.60
7	AL.9	01.30	1.200	39.46	1.674	10.07	1.45	39.81	1.68	2.65
8	AL.9	02.60	1.250	47.52	1.844	19.02	1.11	39.21	1.64	2.55
9	TP.1	02.00	1.310	38.39	1.813	12.21	1.01	35.22	1.67	2.51
10	TP.1-1	01.00-01.40	1.330	35.35	1.800	17.34	0.37	35.98	1.70	2.64
11	TP.2-1	01.00-01.40	1.250	35.47	1.693	15.77	0.82	34.52	1.71	2.64
12	TP.4	01.00-01.40	1.390	32.20	1.838	6.11	1.07	32.89	1.73	2.44
13	TP.4-2	02.10	1.320	35.78	1.792	17.87	0.30	32.24	1.70	2.54
14	TP.8	01.75-02.15	1.350	43.88	1.942	4.26	0.56	48.36	1.71	2.55
15	TP.9	01.30-01.70	1.130	44.44	1.632	14.64	0.82	49.24	1.65	2.44
16	TP.11	02.60-03.00	1.420	32.20	1.877	13.80	0.94	43.44	1.73	2.42
17	TP.11-1	01.60-02.00	1.070	41.17	1.510	25.40	0.22	40.95	1.60	2.48

In expansive soil, such as clay, it is acceptable to state that the volume of soil changes related to the change of water content and its pressure occurred in the soil. These volume changes can lead to either swelling or shrinkage. The pressure, which the expansive soil exerts if it is not allowed to swell or the volume change of the soil drained, is known as swelling pressure of soil. The swelling pressure is affected by several factors such as (a) the type of clay in the soil and the nature of clay minerals; (b) moisture content and dry density; (c) fluid properties; (d) soil stress and pressure limits; and (e) drying and wetting cycle. After the CBR and shear strength (qu) values were obtained for each variation of clay and sand from the study sites, the CBR and qu values were analyzed in relation to influential factors such as soil mix

composition, soil density, and also water content. It needs to be seen that the CBR value and the shear strength value ( $q_u$ ) are related to the soil mixture that an increase in shear strength and CBR occurs significantly after mixing sand gradation into the clay (Al Hafizh, Wibisono, Nugroho, 2017). The following are the results of the analysis of soil properties, as shown in Table 2.

Table 2. Indexes Properties of Soil

Sample code	% integers no. 200	% integers no. 4	k (cm/s)	w %	C' (kPa)	$\phi$ (°)	$\gamma$ (gr/cm <sup>3</sup> )	S <sub>r</sub>	C <sub>v</sub> (cm <sup>2</sup> /s)	C <sub>c</sub>	LL %	PL %	PI %
A.3	13.66	58.72	2.80.E-03	31.94	0.68	14.79	1.19	76.15	0.34	0.47	53.45	41.21	12.24
AL.6	6.25	77.21	8.13.E-03	44.76	0.41	20.20	1.19	102.93	0.38	0.12	68.17	55.45	12.71
AL.7	19.71	66.31	3.11.E-04	37.99	0.30	30.26	1.16	79.82	0.26	0.14	58.88	48.95	9.93
AL.7	11.56	70.56	1.98.E-02	37.33	0.35	30.05	1.16	81.13	0.30	0.05	60.86	43.36	17.50
AL.8	9.37	68.56	1.46.E-02	36.37	0.28	29.32	1.28	89.43	0.31	0.13	61.08	46.72	14.36
AL.8	17.27	63.82	9.37.E-04	38.08	0.34	30.76	1.25	98.23	0.48	0.24	46.36	31.07	15.29
AL.9	19.70	67.05	1.11.E-03	39.81	0.32	29.54	1.20	104.40	0.20	0.05	72.85	58.00	14.85
AL.9	14.21	70.05	1.40.E-03	39.21	0.31	33.69	1.25	89.28	0.48	0.36	64.75	47.52	17.23
TP.1	19.45	54.68	3.29.E-03	35.22	0.31	27.62	1.31	101.37	0.94	0.07	62.95	51.37	11.58
TP.1-1	8.12	77.18	6.88.E-03	35.98	0.25	32.01	1.33	95.52	0.43	0.11	56.45	42.90	13.54
TP.2-1	20.04	65.01	4.26.E-04	34.52	0.22	22.62	1.25	83.04	0.35	0.08	51.95	41.79	10.16
TP.4	15.02	73.74	2.14.E-03	32.89	0.31	23.67	1.39	104.73	0.35	0.11	44.56	25.78	18.78
TP.4-2	16.78	50.84	1.49.E-03	32.24	0.33	25.56	1.32	93.39	0.46	0.14	58.31	35.17	23.14
TP.8	6.90	71.89	8.84.E-03	48.36	0.70	16.08	1.35	129.74	0.37	0.10	71.36	53.74	17.62
TP.9	14.10	71.14	1.89.E-03	39.24	0.35	28.74	1.13	97.43	0.16	0.07	64.64	51.37	13.27
TP.11	14.33	48.95	2.51.E-03	43.44	0.37	21.06	1.42	123.80	0.36	0.29	73.49	51.19	22.30
TP.11-1	19.85	66.24	2.46.E-04	40.95	0.35	27.99	1.07	77.21	0.24	0.10	64.91	52.44	12.47

Compressibility is an important parameter in a dam construction due to its instability that might cause bigger problems such as collapsing. The experiments showed that the coefficient of consolidation ( $C_v$ ) obtained was in the range of 0.201 cm<sup>2</sup>/sec to 0.942 cm<sup>2</sup>/sec with 29.44% and 34% of sand that passed sieve no. 200 and no.4, respectively. Meanwhile, the values of the compression index ( $C_c$ ) obtained were between 0.48 to 0.29, as seen in Table 1. The most significant consolidation occurred when the ratio of the fine grain was much higher than clay, is showed by the high value of  $C_v$ . It presents essential environmental protection and water management (Cui, Tian, Yang, Wen, and Khan, 2020). However, the compressibility process might happen during and after the construction process as newly added loads. At this rate, it might become very extensive and excessive pore water pressure.

### Relationship between water content with frictional angle, cohesion, and density

The presence of water content creates pore water pressure that affects the effective stress of soil. In addition to water content, soil cohesion, shear strength, and compaction energy affect the bearing capacity of the soil. The relationship between water content, frictional angles, cohesion, and density is shown in Figure 3.

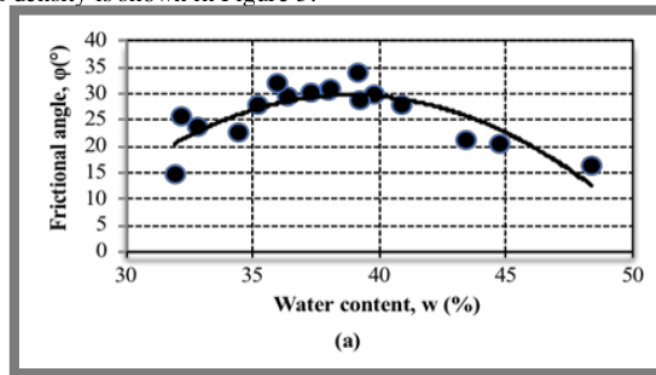


Figure 3. Highest cohesion value

Figure 3 shows the relationship between water content and frictional angle. The result shows that the frictional angle value increased as the water content increased until it reaches 38% of water content. The frictional angle value was obtained from the Triaxial CU test. Figure 3 illustrates the relationship between soil cohesion and water content. The result shows that the cohesion decreased rapidly with increasing water content and did not change much afterward.

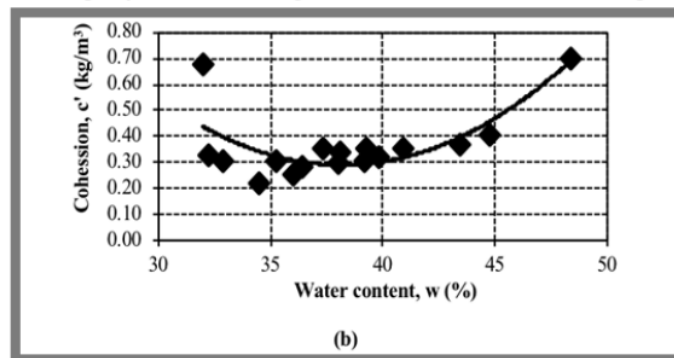


Figure 4. Highest cohesion value-added water

Figure 4 gives information about the relationship between water content and soil density. The result shows that the maximum density was obtained with 32% of optimum water content, and it kept decreasing as water content increased. The frictional angle is closely related to the cohesion of soil. The frictional angle and cohesion of soil are increased to a maximum value along with the addition of water content. The highest cohesion value was obtained when water was added in its optimum volume, which was between 37% and 40%, as seen in Figure 3 and Figure 4. There were 17 experiments carried out in total. However, 2 experiments showed dissimilar results. At water content between 35% and 40%, the soil density ranged from 1.15  $\text{gr/m}^3$  to 1.35  $\text{gr/m}^3$  and decreased with further water addition, as seen in Figure 5. It is line with the decreasing upstream and downstream considerably between content and soil density (Jiang, Lu, Moran, Calvi, Dutra., and Li, 2018).

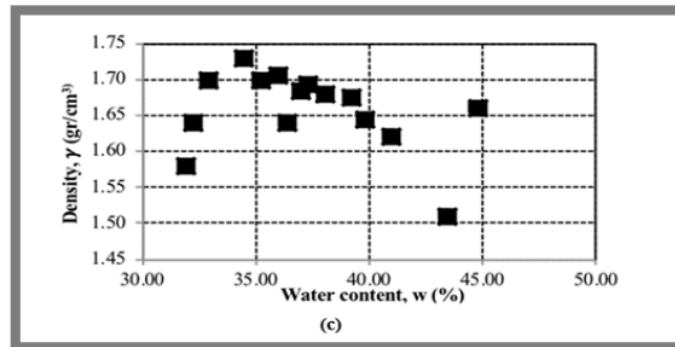


Figure 5. Decreased water addition

### The Relationship between Soil Mixture Variations and Permeability

It was found from the experiments that the clay and sand ratio affected the coefficient of permeability. The result showed that the coefficient of permeability decreased correspondingly with the increment of clay ratio. Meanwhile, the coefficient of permeability reached  $10^{-7}$  when the clay content was 41%. This result does not fit the requirements of soil that can be used as filter material, which allows less than 5% of clay contained in the material where the clay will be sticky (cohesive) and very soft (Terzaghi and Peck, 1987). However, the soil from the surrounding area may still be used as body dam material with proper compaction, as referred to in SNI 8062: 2015 (Earth-fill Dam Regulation). The relationship between clay and sand ratio in soil with respect to the coefficient of permeability is shown in Figures 6 and 7 below.

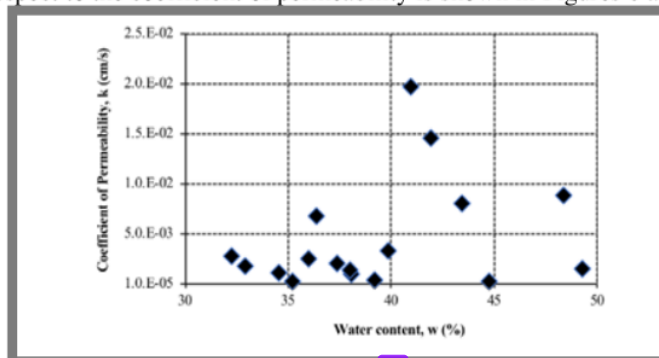


Figure 6 Relationship between clay/ sand ratio and coefficient of permeability and water content





372

## 373

374

## 375

376

1

## Conflict of Interest Disclosure

The authors whose names are listed immediately in this paper certify that they have NO affiliations with or involvement in any organization or entity with any financial interest (such as honoraria; educational grants; participation in speakers' bureaus; membership, employment, consultancies, stock ownership, or other equity interest; and expert testimony or patent-licensing arrangements), or non-financial interest (such as personal or professional relationships, affiliations, knowledge or beliefs) in the subject matter or materials discussed in this manuscript.

## Acknowledgments

23

This research was supported by the Research and Community Service Institution of Lampung University, Indonesia through the research grant in 2020.

## References

- [1] Albaladejo, J., Diaz- Pereira, E., and De Vente, J. (2020). Eco- holistic soil conservation to support land degradation neutrality and sustainable development goals. *Catena*, 196, 104823.
- [2] ASTM International. (2015). ASTM E2399/E2399M-15 Standards test method for maximum media density for dead load analysis of vegetative (green) roof systems West Conshohocken, PA.
- [3] Behzad, K., and Nazeri, F. (2016). Effect of Materials Quality on Stability of Embankment Dam. *Electronic Journal of Geotechnical Engineering*, 5061-5071.
- [4] Bowles, J. (1984). Physical and Geotechnical Properties of Soil (Soil Mechanics). Second Edition. Jakarta: Erlangga.
- [5] Charai, M., Sghiouri, H., Mezhab, A., Karkri, M., and Hammouti, E. K. (2020). Comparative study of a clay before and after fired brick-making process. *Materials today: Proceedings*
- [6] Cui, T., Tian, F., Yang, T., Wen, J., and Khan, A. Y. M. (2020). Development of a comprehensive framework for assessing the impacts of climate change and dam construction on flow regimes. *Journal of Hydrology*, 590, 125358.
- [7] Firoozi, A. A., Olgun, G. C., Firoozi, A. A., and Baghini, S. M. (2017). Fundamentals of soil stabilization. *Geo-Engineering*, 8:26.
- [8] Fu, Z., Su, H., and Wen, Z. (2020). Multi-scale numerical analysis for linear elastic behavior of clay concrete. *International Journal of Solids and Structures*, 203, 23-45
- [9] Hafizh, A. S. M., Wibisono, G., and Nugroho, A. S. (2017). Stabilization of Clay Soil with various sand gradation and lime mixture. National Conference on Civil Engineering and Infrastructure - I, Department of Civil Engineering, University of Jember, G-45 - G-55.
- [10] Hardiyatmo, H. C. (1999). Soil Mechanics I. Jakarta: PT Gramedia Pustaka Umum.
- [11] Haruna, I. S., and Nkongolo, V. N. (2013). Variability of soil physical properties in a clay-loam soil and its implication on soil management practices. *Hindawi Advances Journal in Engineering*, 1-8.
- [12] Ihekwe, O. G., Shondo, N. J., Kingsley, I. O., Kalu-Uka, M. G., Nwuzor, C. I., and Onwualu, P. A. (2020). Characterization of certain Nigerian clay minerals for water purification and other industrial applications. *Heliyon*, 6.4, e03783.
- [13] Jiang, X., Lu, D., Moran, E., Calvi, F. M., and Li, G. (2018). Examining impacts of the Belo Monte hydroelectric dam construction on land-cover changes using multitemporal Landsat imagery. *Applied Geography*, 97, 35-47.
- [14] Kocheeva, N. A., Roldugin, V., Katz, V. E., Manankova, T. I. (2019). Sulfate ion in the groundwater in the basin of mayma river (Northern Altai, Rusia. *Periodico Tche Quimica*, 16 (33), 315-324
- [15] Khor, C. H., and Shamsuddin, H. A. (2019). Risk Management for the Moneying Dam Upgrading and Enlargement Project. International Conference on Dam Safety Management and Engineering (ICDSME), pp. 148-157.
- [16] Lei, D., Liu, L., and Zhu, X. (2021). Prediction of soil water characteristic curve based on soil water evaporation. *Hindawi Advances Journal in Engineering*, 1-14.
- [17] Neina, D. (2019). The role of soil pH in plant nutrition and soil remediation. *Hindawi Advances Journal in Engineering*, 1-9.

- 459 [18] Poudel, S., Abbey, S. J., and Ngambi, S. (2017). Mechanism of Hydraulic Fracturing in Cohesive Zone of  
 460 Embankment Dam Cores - A Review. *International Journal of Civil Engineering and Technology (IJCET)*,  
 461 1202-1213.
- 462 [19] Secretariat Office - Dam Safety Commission (Dam Safety Center). (2003). Guidelines for General Dam  
 463 Design Criteria. Jakarta: Department of Settlement and Regional Infrastructure, Directorate General of Water  
 464 Resources.
- 465 [20] Sherard, J. L., Dunningan, L., Decker, R. S., Steele, F. (1976). Pinhole test for identifying dispersive soils.  
 466 *Journal of Geotech Engineering*. Divison. ASCE, 102, 287-301.
- 467 [21] Terzaghi, K., Peck, R. B. (1987). Soil Mechanics In Engineering Practices. Jakarta: Erlangga.
- 468 [22] Totsche, K.U., Amelung, W., Gerzabek, M.H., Guggenberger, G., Klumpp, E., Knief, C., Lehdorff, E.,  
 469 Mikutta, R., Peth, S., Prechtel, A., Ray, N., Kögel-Knabner, I. (2018). Microaggregates in soils. 181, 104-136.
- 470 [23] Verhoef, P. (1994). Geology For Civil Engineering. Jakarta: Erlangga. Figural and Numerical Strategies for  
 471 Generalizing Patterns in Algebra. In Alatorre, J. L. Cortina, M. Saiz, and A. Mendez (Eds.), *Proceedings of*  
 472 *the 28th annual meeting of the North American Chapter of the International Group for the Psychology of*  
 473 *Mathematics Education* (Vol. 2, pp. 95-101). Universidad Pedagogica Nacional.
- 474 [24] Wang, C., Liu, J., Feng, J., Wei, M., Wang, C., and Jiang, Y. (2016). Effects of gas diffusion from fracture to  
 475 coal matrix on the evolution of coal strains: experimental observations. *International Journal Coal and*  
 476 *Geology*, 162, 74- 84.
- 477 [25] Wang, L., Tang, L., Wang, Z., Liu, H, and Zhang, W. (2020). Discussion on probabilistic characterization of  
 478 the soil-water retention curve and hydraulic conductivity and its application to slope reliability. *Computers*  
 479 *and Geotechnics*, 124, 103603.
- 480 [26] Wu, H., Chen, J., Xu, Jijun., Zeng, G., Sang, L., Liu, Q., Yin, Z., Dai, J., Yin, D., Liang, J., and Ye, S. (2019).  
 481 Effects of dam construction on biodiversity: A review. *Journal of Cleaner Production*, 221, 480-489.
- 482 [27] Zhang, Y., Liao, J., Pei, Z., Lu, X., Xu, S., and Wang, X. (2019). Effect of dam construction on nutrient  
 483 deposition from a small agricultural karst catchment. *Ecological Indicators*, 107, 105548.
- 484

# Effect of Sand Fraction Percentage in Soil Mixture towards Soil Support Power for Dam Construction

## ORIGINALITY REPORT

15%

SIMILARITY INDEX

9%

INTERNET SOURCES

9%

PUBLICATIONS

7%

STUDENT PAPERS

## PRIMARY SOURCES

1	jhmhp.amegroups.com Internet Source	1 %
2	d.researchbib.com Internet Source	1 %
3	Submitted to International University - VNUHCM Student Paper	1 %
4	orgprints.org Internet Source	1 %
5	www.huntsvilleal.gov Internet Source	1 %
6	"ICDSME 2019", Springer Science and Business Media LLC, 2020 Publication	1 %
7	ejournals.epublishing.ekt.gr Internet Source	1 %
8	Ali Akbar Firoozi, C. Guney Olgun, Ali Asghar Firoozi, Mojtaba Shojaei Baghini.	1 %



9

Timothy P. Dolen, Claude A. Fetzer, Robert B. Jansen, Paul C. Knodel, Ernest K. Schrader, Lloyd O. Timblin. "Chapter 6 Materials", Springer Science and Business Media LLC, 1988

Publication

1 %

10

S Syahril, A K Somantri, A A Haziri. "Study of stabilized soil clay soil characteristics using volcanic ash and tailing as subgrade layers", IOP Conference Series: Materials Science and Engineering, 2020

Publication

<1 %

11

Submitted to Karunya University

Student Paper

<1 %

12

Submitted to Liverpool John Moores University

Student Paper

<1 %

13

Submitted to University Tun Hussein Onn Malaysia

Student Paper

<1 %

14

Yopi Lutfiansyah, Muhammad Akhsan. "Comparative Analysis Method of Work, Time and Cost of Concrete Spun Pile Work with Bored Pile On Construction of the Light Rail

<1 %

15

Terashi, . "Engineering properties of stabilized soils", The Deep Mixing Method, 2013.  
Publication

---

16

[www.11worcesterondurban.co.za](http://www.11worcesterondurban.co.za)  
Internet Source

---

17

Submitted to Bridgepoint Education  
Student Paper

---

18

Submitted to Caledonian College of Engineering  
Student Paper

---

19

[en.wikipedia.org](http://en.wikipedia.org)  
Internet Source

---

20

Jack Widjajakusuma, Hendo Winata.  
"Influence of Rice Husk Ash and Clay in Stabilization of Silty Soils Using Cement",  
MATEC Web of Conferences, 2017  
Publication

---

21

[doaj.org](http://doaj.org)  
Internet Source

---

22

[jacob.de](http://jacob.de)  
Internet Source

---

23

"Proceedings of the 8th International Congress on Environmental Geotechnics

<1 %

<1 %

<1 %

<1 %

<1 %

<1 %

<1 %

<1 %

<1 %

24

A.N. Nesmeyanov, E.G. Perevalova, S.P. Gubin, A.G. Kozlovskii. "Protodemercuration of some mercury derivatives of ferrocene and cyclopentadienylmanganese tricarbonyl", Journal of Organometallic Chemistry, 1968

Publication

<1 %

25

Andriani, M. Shubhi Nurul Hadie, Fuji Asema. "The Effect of Geotechnical Characteristics Toward Road Damage at Lowland Area", Journal of Physics: Conference Series, 2020

Publication

<1 %

26

[www.hlk.nl](http://www.hlk.nl)

Internet Source

<1 %

27

[ethesis.nitrkl.ac.in](http://ethesis.nitrkl.ac.in)

Internet Source

<1 %

28

Aref M. Al-Swaidani, Ibraheem Hamood, Ayman Meziab. "Thermally Treated Clay as a Stabilizing Agent for Expansive Clayey Soil: Some Engineering Properties", Studia Geotechnica et Mechanica, 2018

Publication

<1 %

29

Rao, Sudhakar. "Volume change of tropical residual soils", Handbook of Tropical Residual Soils Engineering, 2012.

Publication

<1 %

30	Tami, Denny, Harianto Rahardjo, and Eng-Choon Leong. "Effects of Hysteresis on Steady-State Infiltration in Unsaturated Slopes", Journal of Geotechnical and Geoenvironmental Engineering, 2004. Publication	<1 %
31	eprints.uthm.edu.my Internet Source	<1 %
32	soilmechanics223.wordpress.com Internet Source	<1 %
33	Submitted to University of Leeds Student Paper	<1 %
34	arro.anglia.ac.uk Internet Source	<1 %
35	e-journal.uajy.ac.id Internet Source	<1 %
36	jurnal.uns.ac.id Internet Source	<1 %
37	www.frontiersin.org Internet Source	<1 %
38	www.scribd.com Internet Source	<1 %
39	www.wtcb.be Internet Source	<1 %



Mehmet Sukru Ozcoban, Nejat Cetinkaya, Suna Ozden Celik, Guler Turkoglu Demirkol, Vildan Cansiz, Nese Tufekci. "Hydraulic conductivity and removal rate of compacted clays permeated with landfill leachate", *Desalination and Water Treatment*, 2013

Publication

<1 %

---

Exclude quotes      On

Exclude matches      Off

Exclude bibliography      On