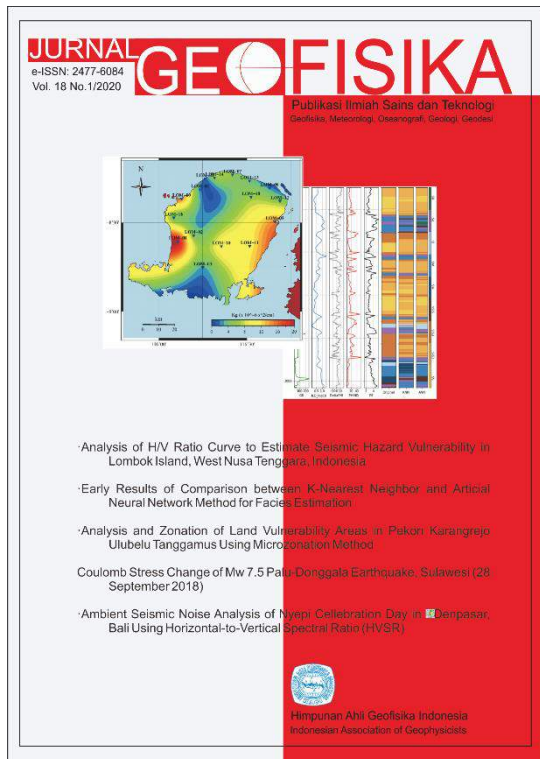


- Analysis of H/V Ratio Curve to Estimate Seismic Hazard Vulnerability in Lombok Island, West Nusa Tenggara, Indonesia
 - Early Results of Comparison between K-Nearest Neighbor and Artificial Neural Network Method for Facies Estimation
 - Analysis and Zonation of Land Vulnerability Areas in Pekon Karangrejo Ulubelu Tanggamus Using Microzonation Method
- Coulomb Stress Change of Mw 7.5 Palu-Donggala Earthquake, Sulawesi (28 September 2018)
- Ambient Seismic Noise Analysis of Nyepi Celebration Day in Denpasar, Bali Using Horizontal-to-Vertical Spectral Ratio (HVSr)





DOI: <http://dx.doi.org/10.36435/jgf.v18i1>
 Published: 2020-09-29

Himpunan Ahli Geofisika Indonesia (HAGI)
 Indonesian Association of Geophysicists
 Gedung Patra Office Tower Lt. 18 Suite 2045
 Jl. Jend. Gatot Subroto Kav 32-34 Jakarta 12950
 Phone: 021-5250040 Fax: 021-52900605

Article

- Analysis of H/V Ratio Curve to Estimate Seismic Hazard Vulnerability in Lombok Island, West Nusa Tenggara, Indonesia
Muhammad Randy Caesario Harsuko, Zulfakriza Z., Andri Dian Nugraha, Muzli Muzli, David Prambudi Sahara, Nanang T Puspito, Yayan M Husni, Billy S Prabowo, Achmad Fajar Narotama Sarjan.
1-6
- Early Results of Comparison between K-Nearest Neighbor and Artificial Neural Network Method for Facies Estimation
Hadyan Pratama, Loris Alif Syahputra, Muhammad Fauzan Albany, Agus Abdullah, Sandy Kurniawan Suhardja, Epo Kusumah, Weny Astuti, Bambang Mujihardi
7-13
- Analysis and Zonation of Land Vulnerability Areas in Pekon Karangrejo Ulubelu Tanggamus Using Microzonation Method
Eko Rananda, Lintang Prabowo, Arief Putih Prabowo, Syamsurijal Rasimeng, Ida Bagus Suananda Yogi
14-18
- Coulomb Stress Change of Mw 7.5 Palu-Donggala Earthquake, Sulawesi (28 September 2018)
Adhi Wibowo, Pepen Supendi, Andri D. Nugraha
19-22
- Ambient Noise Analysis During Nyepi in Denpasar Using Horizontal-to-Vertical Spectral Ratio (HVSR) Method
I Putu Dedy Pratama, Dwi Karyadi Priyanto, Pande Komang Gede Arta Negara
23-26

Editor-in-chief :

- Dr.rer.nat. David P. Sahara (ITB) - [Google Scholar](#) | [Scopus](#)
- Dr. Zulfakriza Z. (ITB) - [Google Scholar](#) | [Scopus](#)

Editors :

- Dr. Aditya Riyadi Gusman (New Zealand) - [Google Scholar](#) | [Scopus](#)
- Dr.rer.nat. Ade Anggraini (UGM) - [Google Scholar](#) | [Scopus](#)
- Dr. Agustya Adi Martha (BMKG) - [Google Scholar](#) | [Scopus](#)
- Sandy K. Suhardja, PhD (Universitas Pertamina) - [Google Scholar](#)
- Dr. Mudrik R. Dariono (LIPI) - [Google Scholar](#) | [Scopus](#)

Focus and Scope

Jurnal Geofisika aims to promote the understanding of the Earth's internal structure, physical properties, processes and evolution. Contributions presenting new data, methods and interpretations, of interest to a broad readership, are welcome:

Scope:

1. Atmospheric Sciences
2. Climate: Past, Present, Future
3. Earth Magnetism & Rock Physics
4. Energy, Resources and the Environment
5. Geodesy
6. Geodynamics
7. Geophysics Instrumentation & Data Systems
8. Natural Hazards
9. Nonlinear Processes in Geosciences
10. Ocean Sciences
11. Seismology
12. Tectonics & Structural Geology

Reviewer:

- Dr. Andri Dian Nugraha (ITB) - [Google Scholar](#) | [Scopus](#)
- Dr. Abdul Muhari (Kementrian Kelautan dan Perikanan) - [Google Scholar](#) | [Scopus](#)
- Dr. Eng. Asep Saepuloh (ITB) - [Google Scholar](#) | [Scopus](#)
- Dr. Daryono (BMKG)
- Dr. Eko Januari Wahyudi (ITB) - [Google Scholar](#) | [Scopus](#)
- Dr. Endra Gunawan (ITB) - [Google Scholar](#) | [Scopus](#)
- Dr. Erdinc Saygin (CSIRO - Australia) - [Google Scholar](#) | [Scopus](#)
- Gayatri Indah Marliyani, Ph. D (UGM) - [Google Scholar](#) | [Scopus](#)
- Dr. Alpius Dwi Guntara (UTC Pertamina)
- Mokhamad Yusup Nur Khakim, Ph. D (Unsri) - [Google Scholar](#) | [Scopus](#)
- Dr. Muksin Umar (Universitas Syiah Kuala, Aceh) - [Google Scholar](#) | [Scopus](#)
- Dr. Muzli (BMKG) - [Google Scholar](#) | [Scopus](#)
- Dr. Rusmawan Suwarman (ITB) - [Google Scholar](#) | [Scopus](#)
- Dr. Tedi Yudistira (ITB) - [Google Scholar](#) | [Scopus](#)

Advisory Boards Member:

- Prof. Dr. Djoko Santoso (ITB) - [Google Scholar](#) | [Scopus](#)
- Prof. Dr. Nanang T. Puspito (ITB) - [Google Scholar](#) | [Scopus](#)
- Prof. Sri Widiyantoro, Ph.D (ITB) - [Google Scholar](#) | [Scopus](#)
- Prof. Satria Bijaksana, Ph.D (ITB) - [Google Scholar](#) | [Scopus](#)
- Prof. Dr. Hendra Grandis (ITB) - [Google Scholar](#) | [Scopus](#)
- Dr. Djedi Widarto (UTC Pertamina) - [Google Scholar](#) | [Scopus](#)
- Dr. Irwan Meilano (ITB) - [Google Scholar](#) | [Scopus](#)
- Dr. Hendra Gunawan (PVMBG)

Publication Ethics

Our ethic statements are based on COPE's Best Practice Guidelines for Journal Editors.

Publication decisions

The editor is responsible for deciding which of the articles submitted to the journal should be published.

The editor may be guided by the policies of the journal's editorial board and constrained by such legal requirements as shall then be in force regarding libel, copyright infringement and plagiarism. The editor may confer with other editors or reviewers in making this decision.

Fair play

An editor at any time evaluate manuscripts for their intellectual content without regard to race, gender, sexual orientation, religious belief, ethnic origin, citizenship, or political philosophy of the authors.

Confidentiality

The editor and any editorial staff must not disclose any information about a submitted manuscript to anyone other than the corresponding author, reviewers, potential reviewers, other editorial advisers, and the publisher, as appropriate.

Disclosure and conflicts of interest

Unpublished materials disclosed in a submitted manuscript must not be used in an editor's own research without the express written consent of the author.

Duties of Reviewers

Contribution to Editorial Decisions

Peer review assists the editor in making editorial decisions and through the editorial communications with the author may also assist the author in improving the paper.

Promptness

Any selected referee who feels unqualified to review the research reported in a manuscript or knows that its prompt review will be impossible should notify the editor and excuse himself from the review process.

Confidentiality

Any manuscripts received for review must be treated as confidential documents. They must not be shown to or discussed with others except as authorized by the editor.

Standards of Objectivity

Reviews should be conducted objectively. Personal criticism of the author is inappropriate. Referees should express their views clearly with supporting arguments.

Acknowledgement of Sources

Reviewers should identify relevant published work that has not been cited by the authors. Any statement that an observation, derivation, or argument had been previously reported should be accompanied by the relevant citation. A reviewer should also call to the editor's attention any substantial similarity or overlap between the manuscript under consideration and any other published paper of which they have personal knowledge.

Disclosure and Conflict of Interest

Privileged information or ideas obtained through peer review must be kept confidential and not used for personal advantage. Reviewers should not consider manuscripts in which they have conflicts of interest resulting from competitive, collaborative, or other relationships or connections with any of the authors, companies, or institutions connected to the papers.

Duties of Authors

Reporting standards

Authors of reports of original research should present an accurate account of the work performed as well as an objective discussion of its significance. Underlying data should be represented accurately in the paper. A paper should contain sufficient detail and references to permit others to replicate the work. Fraudulent or knowingly inaccurate statements constitute unethical behavior and are unacceptable.

Originality and Plagiarism

The authors should ensure that they have written entirely original works, and if the authors have used the work and/or words of others that this has been appropriately cited or quoted.

Multiple, Redundant or Concurrent Publication

An author should not in general publish manuscripts describing essentially the same research in more than one journal or primary publication. Submitting the same manuscript to more than one journal concurrently constitutes unethical publishing behaviour and is unacceptable.

Acknowledgement of Sources

Proper acknowledgment of the work of others must always be given. Authors should cite publications that have been influential in determining the nature of the reported work.

Authorship of the Paper

Authorship should be limited to those who have made a significant contribution to the conception, design, execution, or interpretation of the reported study. All those who have made significant contributions should be listed as co-authors. Where there are others who have participated in certain substantive aspects of the research project, they should be acknowledged or listed as contributors.

The corresponding author should ensure that all appropriate co-authors and no inappropriate co-authors are included on the paper, and that all co-authors have seen and approved the final version of the paper and have agreed to its submission for publication.

Disclosure and Conflicts of Interest

All authors should disclose in their manuscript any financial or other substantive conflict of interest that might be construed to influence the results or interpretation of their manuscript. All sources of financial support for the project should be disclosed.

Fundamental errors in published works

When an author discovers a significant error or inaccuracy in his/her own published work, it is the author's obligation to promptly notify the journal editor or publisher and cooperate with the editor to retract or correct the paper.

Himpunan Ahli Geofisika Indonesia (HAGI)

Gedung Patra Office Tower Lt. 18 Suite 2045

Jl. Jend. Gatot Subroto Kav 32-34

Jakarta 12950

Fax. 021-52900605

Phone: 021-5250040

Principal Contact

Dr. David P. Sahara

Global Geophysics Research Group, Faculty of Mining and Petroleum Engineering,
ITB

david.sahara@gf.itb.ac.id



Himpunan Ahli Geofisika Indonesia (HAGI)

Indonesian Association of Geophysicists

Gedung Patra Office Tower Lt. 18 Suite 2045

Jl. Jend. Gatot Subroto Kav 32-34 Jakarta 12950

Phone: 021-5250040 Fax. 021-52900605

Analysis and Zonation of Land Vulnerability Areas in Pekon Karangrejo Ulubelu Tanggamus Using Microzonation Method

Eko Rananda*, Lintang Prabowo, Arief Putih Prabowo, Syamsurijal Rasimeng

Ida Bagus Suananda Yogi

Departement Of Geophysical Engineering, Faculty Of Engineering, University Of Lampung,
Jalan Prof. Dr. Sumantri Brojonegoro No. 1 Bandar Lampung 35145, Lampung, Indonesia

*Email: ekorananda997@gmail.com

Submit: 2020-06-09; Revised: 2020-08-01; Accepted: 2020-08-14

Abstract: Ulubelu Tanggamus is an area that have geothermal energy potential. This region consists of a geological structure in the form of graben and reverse fault formed between Mount Rendingan and Mount Kukusan. Identifications that can be done include surveys to map soil characteristics in shaking responses using microzonation methods. This study aims to analyze the values of dominant frequency, dominant period, Vs30 and amplification. The stages of the research carried out are processing data to obtain dominant frequency, calculating the value of the dominant period, calculating the value of Vs30 and the amplification value, and making a map of the soil vulnerability of the UlubeluTanggamus area. Based on the distribution of the dominant frequency values, the UlubeluTanggamus geothermal area is dominated by a dominant Frequency (F_0) $> 0.5Hz$ which is expected to be a very thick surface thickness of sediments more than 30m. The distribution of the dominant period value obtained is (T_0) > 1 where the character of the sedimentary rock type is very soft consisting of alluvial material formed from sedimentation of deltas, top soil, and mud. The distribution of the Vs30 value is dominated by the value of $100 < Vs30 < 200$ and obtains an amplification value of $2 < A_0 < 6$ times where the area is an area with a moderate risk category to the danger of soil vulnerability. **Keywords:** microzonation, dominant frequency, dominant period, Vs30 and amplification

1 INTRODUCTION

Indonesia is an area that is prone to disasters including earthquakes and landslides, the cause of the disaster is partly due to tectonic processes and soil conditions in an area. The area which is considered to landslides and earthquakes are the Ulubelu Tanggamus geothermal area. This is because there are localized faults formed due to access to the Semangka's regional tectonic movement. Based on these problems, an analysis is needed to determine the dominant frequency and also the vulnerability of the soil. Dominant frequencies and soil vulnerability can be obtained using microzonation methods. Dominant Frequency is a frequency value that often appears so that it is recognized as the frequency

value of the rock layers in the region so that the frequency value can indicate the type and characteristics of the rock (Lachet and Brad, 1994).

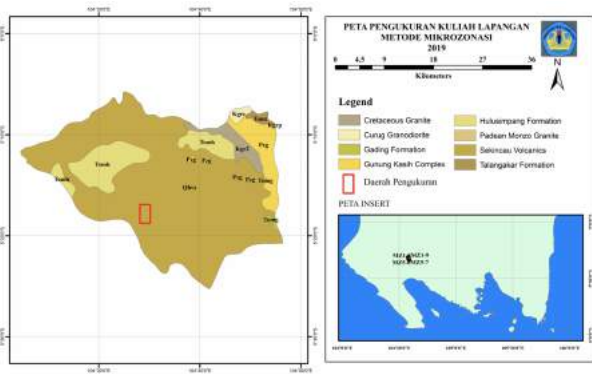
Microzonation method is one technique to divide a large zone into small zones with the criteria for each zone will differ depending on the purpose of the zoning itself. Soil susceptibility microzonation refers to the value obtained from measurements using a microseismic tool (micro earth vibration detector), so that soil vulnerability is seen from the soil's ability to withstand earthquake vibrations.

Microtremor is an environmental vibration (ambient vibration) which comes from two main sources, namely from humans and nature, microtremor occurs due to vibrations due to people who are walking, vibrations of the engine vibrating factory machines or natural vibrations from the ground (Kanai, 1983). Microtremor recording does not require the existence of sources in the form of earthquakes, but the measurement is done directly because what is recorded is a wave that arises from nature. The location response in the sediment area is closely related to sediment thickness and shear wave velocity, the location response obtained from the spectra comparison technique can be used to determine the thickness of the sediment (Syahrudin et al., 2014). This study shows how to get the value of an area's soil vulnerability based on micro vibrations that occur in the area itself, then the data is mapped into a map to see the safety zone and the zone that is not safe from earthquakes.

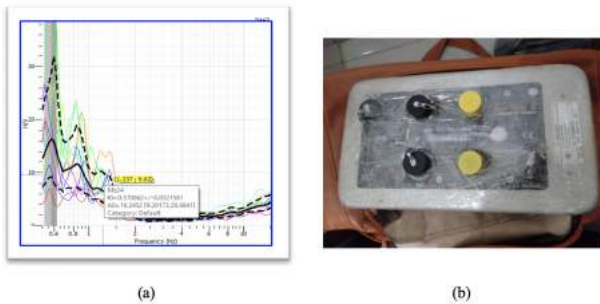
The Ulubelu geothermal area is administratively included in the Tanggamus Regency, Lampung Province. Ulubelu is one of the sectors in the northeast of the Semangka fault and part of the Tanggamus region (Suharno, 2003). The location of this research is located in the Mount Duduk complex (Figure 1).

The regional geology of the study area is dominated by young volcanics (Holocene Peistocene) such as breccia, lava and tuffa. In the formation of Hulusimpang (Olocosene miocene) consists of volcanic breccias and lava. Old rocks are found in the Mount Kasih complex with metamorphic sequences from low to moderate in the northeastern region of young volcanism.

The surface geology in the study area is dominated by quarterly volcanic products and tertiary volcanic, or so



Gambar 1. Map of the Microzonation Research Area



Gambar 2. a) dominant frequency data, b) Reftex 130-SMHR (a device used to detect microtremor waves)

called Tanggamus volcanics. Alluvium and alteration rocks are in the southwest part of the study area. Many layers are heated but the alteration layer of the geothermal system is in the middle of the study area close to the Pagaralam area on the Ulubelu caldera. With the direction of the trend from north to south and south-west, parallel to the Belu river and Ngarip river. Mount Sulah, Mount Kukusan and Mount Duduk are composed of andesitic, basaltic and volcanic dacits during the Pliocene period. The mountains are in the middle of the study area with volcanic products heading west and southwest (Suharno, 2003).

2 DATA AND METHOD

There are 26 Microzonation survey point data in Pekon Karang Rejo Ulubelu Geothermal Area, Tanggamus Regency. Microzonation data processing is carried out in several stages, namely using the CMD program to convert data with PAS2SAC. This data conversion is done so that the waves recorded by the microtremor measurement tool (Figure 2b) can be read on the Geopsy software to be processed at a later stage. In this geopsy software, we will get the dominant frequency value (Figure 2a).

After getting the dominant frequency then proceed with calculating the value of the dominant period, the value of Vs30 and the amplification value. Dominant period value is the time required for microtremor waves to propagate through the surface sediment deposition layer or come through one reflection of the surface reflectance plane, the

Table 1. Kanai and Omote - Nakajima Land Classifications (Arifin et al, 2014).

Land Classification		Period (T) (second)	Explanation	Characteristic
Kanai	Omote - Nakajima			
Type I		0.05-0.15	Tertiary or older rocks.	Hard
Type II	Type A	0.10-0.25	Alluvial rocks, with a thickness of 5m. Consists of sandy-gravel, sandy hard clay, loam, etc.	medium
Type III	Type B	0.25-0.40	Alluvial rocks, with thickness >5m. Consists of sandy-gravel hard clay, loam, etc.	Soft
Type IV	Type C	>0.40	Alluvial material, which is formed from sedimentation of deltas, topsoils, mud, etc.	Very Soft

Table 2. Classification of Rock Types Based on Uniform Building Code (UBC).

Rock type	Rock type profile	Vs30
A	Hard rock	>1500 m/s
B	Mid Rock	760-1500 m/s
C	Very dense soil and soft rock	360-760 m/s
D	Stiff soil	180-360 m/s
E	Soft soil	<180 m/s

dominant period value also indicates the character of rock layers in Table 1 in an area.

The dominant period value is obtained based on the equation

$$T_0 = \frac{1}{f_0} \tag{1}$$

Where: T_0 = Dominant period (s) f_0 = Dominant frequency (hz)

Vs30 is the speed of the shear wave to a depth of 30m from the surface. The value Vs30 can be used in determining earthquake resistant building standards. The value Vs30 is used to determine the rock classification based on the strength of vibrations generated from the earthquake due to local effects and is used in the design of earthquake resistant buildings. Characteristics or properties of rocks are needed to analyze the dynamic nature of rocks, so that the rock stiffness and shear strength of the soil can be determined by measuring the shear wave velocity to a depth of 30m. rock type classification based on the average propagation velocity of shear waves to a depth of 30m (Vs30) can be seen in Table 2.

The VS30 value is obtained using the equation,

$$VS_{30} = 4hf_0 \tag{2}$$

Where, V_{s30} = shear wave velocity to a depth of 30m from the surface (m/s) h = layer depth (m) f_0 = dominant frequency (Hz)

Amplification is directly proportional to the value of the horizontal and vertical spectral ratio (H/V). The amplification value can increase, if the rock has been deformed (weathering, folding or enlarged) which changes the physical properties of the rock. In the same rock, the amplification value can vary according to the level of deformation

Table 3. Division of soil amplification zones (Marjiyono, 2010).

No	Amplification of soil	Color in Mapping	Risk description
1	0-3	Blue	Low
2	3-6	Green	Medium
3	6-9	Yellow	High
4	More than 9	Red	Very high

and weathering in the rock body (Marjiyono, 2010). Based on this understanding, the amplification can be written in Equation 3 as a function of the comparison of the contrast impedance values, namely:

$$A_0 = \left\{ \frac{\rho_0 v_0}{\rho_1 v_1} \right\} \quad (3)$$

Where, ρ_0 = bedrock density (gr/ml), ρ_1 = mass density of soft rock (gr/ml), v_0 = wave velocity in bedrock (m/sec), v_1 = wave velocity in soft rock (m/sec).

The amount of amplification in making hazard zoning map for Japan (Wakamatsu et al., 2006). Amplification is calculated by the following equation:

$$\text{Log Amp} = 2,367 - 0,82 \log V s_{300}, 166 \quad (4)$$

The geological survey center in this case divides the soil amplification zones shown in Table 3.

3 RESULT AND DICUSSION

The observations in this study are the map of the distribution of the dominant frequency values (f_0), the dominant period (T_0), the shear wave velocity to a depth of 30 meters (Vs_{30}), and the amplification value (A_0). The data is then analyzed and processed so that it can be used in the determination of soil vulnerability zones in the Pekon Karang Rejo Ulubelu Geothermal Area, Tanggamus Regency. The rock layers in the Pekon Karang Rejo Ulubelu Geothermal Area are mostly by young volcanics (Holocene-Pleistocene) such as breccia, lava and tuffa. In the formation of Hulusimpang (miocene-oligocene) consists of volcanic breccia and lava.

3.1 Map Analysis of Dominant Frequency Value (f_0)

Based on the map of the distribution of the dominant frequency values in Figure 3, it can be interpreted that in Pekon Karang Rejo, Ulubelu Geothermal Area has a dominant frequency value ranging from 0.57 - 1.35 Hz.

The distribution of dominant frequency values ($0.5 < f_0 < 1 Hz$) is in Pekon Karang Rejo Ulubelu Tanggamus Geothermal Area. The area is an area with type IV classification according to Kanai (Table 4) with an indication that the thickness of the surface sediment is very thick.

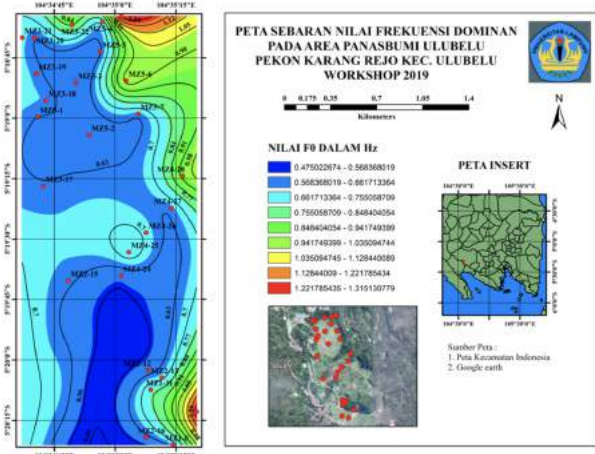
3.2 Map Analysis of Dominant Period Values (T_0)

Based on the map of the distribution of dominant period values in Figure 4, it can be interpreted that in Pekon Karang Rejo the Ulubelu Tanggamus Geothermal Area has a dominant period value ranging from 0.73 to 1.78 sec.

The distribution of dominant period values in the Pekon

Table 4. Soil Classification Based on Dominant Frequency Value of Microtremor By Kanai (Arifin et al., 2014).

Classification		Dominant Frequency (Hz)	Kanai Classification	Description
Type	Variety			
	Variety I	6.667 – 20	Tertiary or older rocks. Consisting of hard rocks sandy, gravel, etc.	The thickness of surface sediments is very thin, dominated by hard rock.
Type IV	Variety II	4 – 10	Alluvial rocks, with thickness 5m. Consists of sandy-gravel, sandy hard clay, loam, etc.	Surface sediment thicknesses fall into the medium category 5-10 meters.
Type III	Variety III	2.5 – 4	Alluvial rocks, with thickness > 5m. Consists of sandy-gravel hard muds, loam, etc.	The thickness of surface sediments falls into the thick category, around 10-30 meters.
Type II	Variety IV	<2.5	Alluvial material, which is formed from delta sedimentation, top soil, muds, etc.	The thickness of the surface sediment is very thick.
Type I				



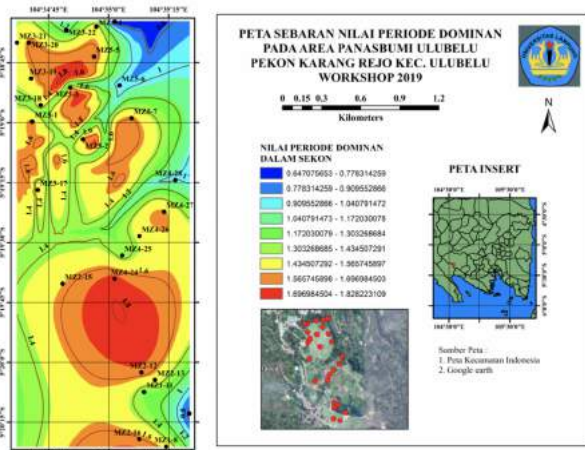
Gambar 3. Map of the distribution of dominant frequency values (f_0) of Pekon Karang Rejo Ulubelu Tanggamus Geothermal Area.

Karang Rejo Ulubelu Tanggamus area is $T_0 > 0,4$ second. The area is an area of type C classification according to Omote-Nakajima (Table 1) with an indication of the character of very soft sedimentary rock types in the form of alluvial material, which is formed from sedimentation of deltas, topsoils, muds.

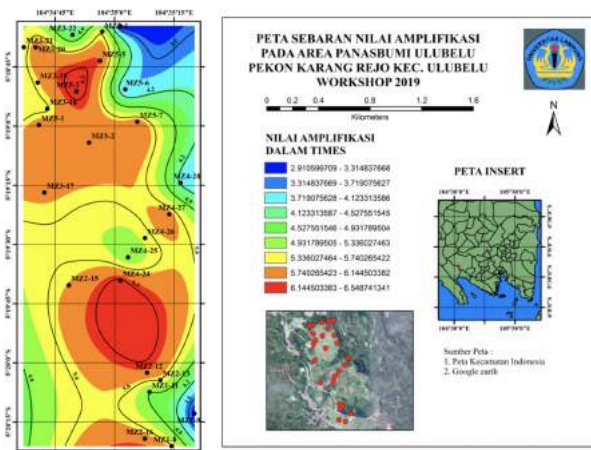
3.3 Analysis of Vs30 Value Distribution Maps

On the distribution map the value of Vs30 shown in Figure 5 is connected with the value of the dominant frequency, to create a site class at the value of Vs30 that follows the value of the dominant frequency.

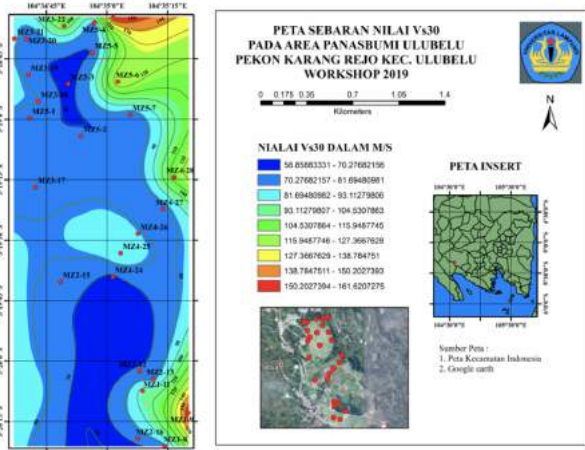
Based on the measurement results, it can be seen that the Pekon Karang Rejo area of the Ulubelu Tanggamus Geothermal Area has a Vs30 value ranging from 67.39 - 156 m/s which means the profile of the rock type is included in



Gambar 4. Map of the distribution of dominant period values (T_0) of Pekon Karang Rejo Ulubelu Tanggamus Geothermal Area



Gambar 6. Map of the distribution of Amplification value (A_0) of Pekon Karang Rejo Ulubelu Tanggamus Geothermal Area.



Gambar 5. Map distribution of the Vs30 value of Karang Rejo Village Ulubelu Tanggamus Geothermal Area.

soft soil based on the classification of rock types based on uniform building code (UBC) (Table 2).

3.4 Amplification Value Distribution Map Analysis (A_0)

Based on the distribution map the amplification value in Figure 6 can be interpreted that the Pekon Karang Rejo area of the Ulubelu Tanggamus Geothermal Area has an amplification value ranging from 3.04 to 6.44 times.

Based on the analysis of the dominant frequency values above by comparing the amplification values it can be concluded that the dominant frequency values are inversely proportional to the amplification values. The amplification value can increase, if the rock has been deformed (weathering, folding or enlarged) which changes the physical properties of the rock. In the same rock, the amplification value can vary according to the level of deformation and weathering in the rock's body.

After analyzing the map and amplification data, if the Vs30 value is small it will have a high amplification. The

map shows that the Pekon Karang Rejo Ulubelu Tanggamus Geothermal Area is included in this low amplification zone because the Vs30 value ranges from 67.39 - 156 m/s resulting in amplification between 3.04 - 6.44 times magnification, which means the area has a risk soil vulnerability with low categories based on the division of land amplification zones (Table 3). This information was concluded based on the calculation of the amplification value of the study area in the Pekon Karang Rejo Ulubelu Tanggamus Geothermal Area.

4 CONCLUSIONS

The dominant frequency value of Karang Rejo Village ($f_0 < 2.5Hz$) ranges from 0.57 - 1.35 Hz so that it is classified as type IV with an indication of the thickness of surface sediment included in the category is very thick more than 30m. The dominant period value of Karang Rejo Village ($T_0 > 0.4s$) ranges from 0.73 - 1.78 seconds with type C classification which is assumed to be very soft sedimentary rock character in the form of alluvial material, which is formed from delta, topsoil, mud sedimentation . The value of Vs30 pekon Karang Rejo ($0 < Vs30 < 300m/s$) ranges from 67.39 - 156 m/s is the same as the distribution of dominant frequency values ($f_0 < 2.5Hz$) with the profile of rock types included in soft soil (soil soft). The amplification value of Pekon Karang Rejo ranges from 3.04 to 6.44 times, so it can be said that the UlubelubeluTanggamus Area is an area with a moderate risk category.

ACKNOWLEDGMENTS

The author would like to thank Mr. Syamsurijal Rasimeng as the lecturer in charge of the 2019 workshop who has allowed this research data for our publication.

REFERENCES

Arifin, S. S., Mulyatno, B. S., Marjiyono, Setyanegara, R., 2014. Penentuan Zona Rawan Guncangan Bencana Gempa Bumi Berdasarkan Analisis Nilai Amplifikasi HVSr Mikrotremor

- dan Analisis Periode Dominan Daerah Liwa dan Sekitarnya. *Jurnal Geofisika Eksplorasi* Vol 2/No.1.
- Kanai, K., 1983. *Engineering Seismology*. University of Tokyo Press Japan.
- Lachet, C., Brad, P. Y., 1994. Numerical and Theoretical Investigation on The Possibilities and Limitations of Nakamura's Technique. *Jurnal Physics Earth* 42 377-397.
- Marjiyono, 2010. *Estimasi Karakteristik Dinamika Tanah Dari Data Mikrotremor Wilayah Bandung*. Thesis ITB. Bandung.
- Suharno, 2003. *Geophysical, Geological and Paleohydrological Studies of the Rendingan-Ulubelu-Waypanas (RUW) Geothermal System Lampung Indonesia*. The University of Auckland, Auckland.
- Syahrudin, M. H., Aswad, S., Palullungan, E. F., Maria, Syamsuddin, 2014. Penentuan Profil Ketebalan Sedimen Lintasan Kota Makassar dengan Mikrotremor Universitas Hasanuddin. *Jurnal Fisika* Vol. 4 No. 1, Mei 2014.
- Wakamatsu, K., Matsuoka, M., Hasegawa, K., 2006. GIS-based Nationwide Hazard Zoning Using the Japan Engineering Geomorphologic Classification Map. *Proceedings of the 8th U.S. National Conference on Earthquake Engineering San Francisco California USA* pp. 849.