

Farmers' Participation in Irrigation Management in the Punggur Utara Irrigation Area, Indonesia

Farmers' Participation in Irrigation Management in the Punggur Utara Irrigation Area, Indonesia

Dyah Indriana Kusumastuti*, Vera Chania Putri, Dwi Jokowiarno and Endro Prasetyo Wahono

Department of Civil Engineering, Engineering Faculty, University of Lampung, Jl. Sumantri Brojonegoro No.1, Bandar Lampung 35145, Indonesia

ABSTRACT

Farmers' participation in water resource management in Indonesia has been accommodated through Law No. 7/2004 and Government Regulation No. 20/2006 regarding irrigation. In government regulations, farmers' participation in irrigation water management has been described in detail, with one of the components of irrigation network management being operations and maintenance. Most irrigation system problems are related to irrigation networks. Farmers' participation in the Water Users Association (WUA), a farmer institution responsible for managing and developing irrigation networks at the tertiary level, determines how irrigation network management activities are carried out. The purpose of this study was to determine the effect of the socio-economic characteristics of farmers and of group participation of a WUA in carrying out irrigation management activities in operations and maintenance activities. The result is connected to the physical condition of the irrigation network. The research took place in the village of Sumber Rejo in the

Punggur Utara irrigation area, which is in Lampung Province, Indonesia, and is where WUA Harapan Maju is active. Samples were determined based on a random sampling method, which found that the sample size required for the study was 80 farmers. The results show that of socio-economic factors, the most influential is the number of farmers' dependents, followed by the land area owned by each farmer. It was also found that group participation of WUA Harapan Maju

ARTICLE INFO

Article history:

Received: 07 September 2020

Accepted: 25 November 2020

Published: 30 April 2021

DOI: <https://doi.org/10.47836/pjst.29.2.02>

E-mail addresses:

kusumast@gmail.com (Dyah Indriana Kusumastuti)

chania.vera@yahoo.com (Vera Chania Putri)

d.jokowiarno@gmail.com (Dwi Jokowiarno)

epwahono@eng.unila.ac.id (Endro Prasetyo Wahono)

* Corresponding author

was categorised as “barely” adequate. This result was confirmed by the condition of the irrigation system in the Punggur Utara irrigation area, which was also “barely” adequate, and the system’s operations and maintenance needed to be improved.

Keywords: Farmer, group participation, irrigation management, operations and maintenance, WUA

INTRODUCTION

Irrigation management plays an important role in agriculture, as irrigation is a key factor that may affect farmer productivity (Azhar et al., 2014; Carracelas et al., 2019; Dirwai et al., 2019; Hudzari et al., 2016; Mateos et al., 2002; Meena et al., 2019; Valipour, 2014). In developing countries, irrigation management systems have not performed well in the past because their management was entirely (and poorly) controlled by governments (Abernethy, 2010). Due to weak institutional arrangements, maintenance cannot be performed optimally, which causes both physical infrastructure and infrastructure management to deteriorate. These problems have impacted efficient and timely water delivery and farmer productivity in turn.

Since the 1980s, instruments of reform have been implemented in many developing countries (Alaerts, 2020; Baldwin et al., 2016; Molling & Bolding, 2004; Sehring, 2007). The most significant paradigm of these reforms is a shift from construction and rehabilitation to operations and maintenance, which can improve infrastructure conditions (Suhardiman & Giordano, 2014). To improve infrastructure conditions in Indonesia, the reforms introduced the formation of Water Users Associations (WUAs) (Gany et al., 2019). These involve farmers in system management and irrigation management transfer, thereby allowing farmers greater control and responsibility (Mukherji et al., 2009).

Irrigation management transfer is a reform package aimed at full or partial devolvement of irrigation management responsibilities from the government to farmers themselves through the establishment of WUAs (FAO, 2007; Mukherji et al., 2007). Participatory irrigation management and irrigation management transfer became a national irrigation strategies for most developing countries and are considered the best solution for irrigation management in developing countries (Fulazzaky, 2017; Poddar et al., 2011).

In irrigation management, it is vital to perform collective actions based on farmers’ collaborative efforts or cooperation in WUAs. Even so, the results are mixed. Some cases of collective action for irrigation management face difficulties (Letsoalo & Van Averbeke, 2004; Moustafa, 2004), whereas other cases are successful (Ghosh et al., 2019; Huamanchumo et al., 2008; Rap, 2006; Vandersypen et al., 2008).

In Indonesia, the farmers’ participatory approach to water resource management has been accommodated by Law No. 7/2004. In compliance with the terms of article 41 of Law No. 7/2004, Government Regulation No. 20/2006 (PP No. 20/2006) on irrigation

2 has formulated a more detailed description of farmers' participation in irrigation water management. 28 One of the components of the irrigation networks scheme management is operations and maintenance and is related to the daily activities of farmers on their irrigated lands. Such activities target reducing government subsidies, improving water-use efficiency, and improving annual food production (Fulazzaky, 2017).

Farmers are the main actors in all operational activities and irrigation maintenance. In carrying out the series of activities involved in irrigation, individual farmers are influenced by many factors, one being farmers' socio-economic characteristics. These characteristics include age, education level, duration of farming, the position of the farmer in the organisation, family size, land area, and income level (Khalkheili & Zamani, 2009). Apart from these characteristics, another influential element in a series of operations and maintenance activities is the group dynamics of the WUA. Therefore, in this study, the effect of farmers' socio-economic aspects, as well as the dynamics of a WUA are reviewed to understand the effect of operations and maintenance activities, both in physical and non-physical terms. The study is conducted by distributing questionnaire to the group members to gather the information about the socio-economic characteristics of the farmers as well as data collection and field observation to assess the physical condition of the irrigation network.

WUA Group Participation

Within a WUA group, cooperation among farmers is necessary to determine and influence the behaviour of the group and its members to effectively achieve the group's aims. Achieving group aims depends on the energy and creativity of members in carrying out their activities. In other words, the development of farmer groups depends on the internal dynamics of the groups, which are determined by the group members. Assessing group dynamics means assessing the strength contained in a group, as this determines group behaviour and group members' ability to achieve the group's goals. Ghosh et al. (2019) used several parameters to assess the group dynamics of some WUAs in India, such as group participation, decision-making procedures, group atmosphere, empathy, interpersonal trust, and social support. Supriyadi (2008) conducted similar research in the Polokarto District, Sukoharjo Regency, Central Java Province, Indonesia. Supriyadi's study found that group dynamics such as group goals, group structure, task functions, coaching and maintenance, cohesiveness, and pressure within the group were related to operations and maintenance of irrigation infrastructure. In contrast, the effectiveness of the group and its hidden agenda were unrelated to operations and maintenance of irrigation infrastructure. Other research was conducted by Desrimon and Fiatno (2018) on the influence of social and economic aspects on operations and maintenance. This research found that social, economic, and institutional factors simultaneously influence aspects of operations and

maintenance. These findings have motivated the current researchers to investigate irrigation system management in terms of the socio-economic part. In addition to this, the influence of aspects of a WUA in terms of group participation towards operational activities and maintenance of irrigation networks will be investigated.

METHODS

22

This research was conducted in the Punggur Utara irrigation area, located in the village of Sumber Rejo in the Kota Gajah district of the Central Lampung Regency. The Punggur Utara irrigation area is part of the Sekampung irrigation system area, located at coordinates 105°28'E - 105°33'E and 4°54'S - 5°01'S (Figure 1). Irrigation water for this area is conveyed through the Argoguruh Dam, which uses the Sekampung River. Argoguruh's weir is located at coordinates 5°11'57"S - 105°10'46"E.

The Punggur Utara irrigation area consists of 26 units, and this study focused on one of them: Unit 15, otherwise known as BPU 15 (BPU stands for Punggur Utara structures in its Indonesia language). This unit passes through five villages (Sumber Rejo, Purwo Rejo,

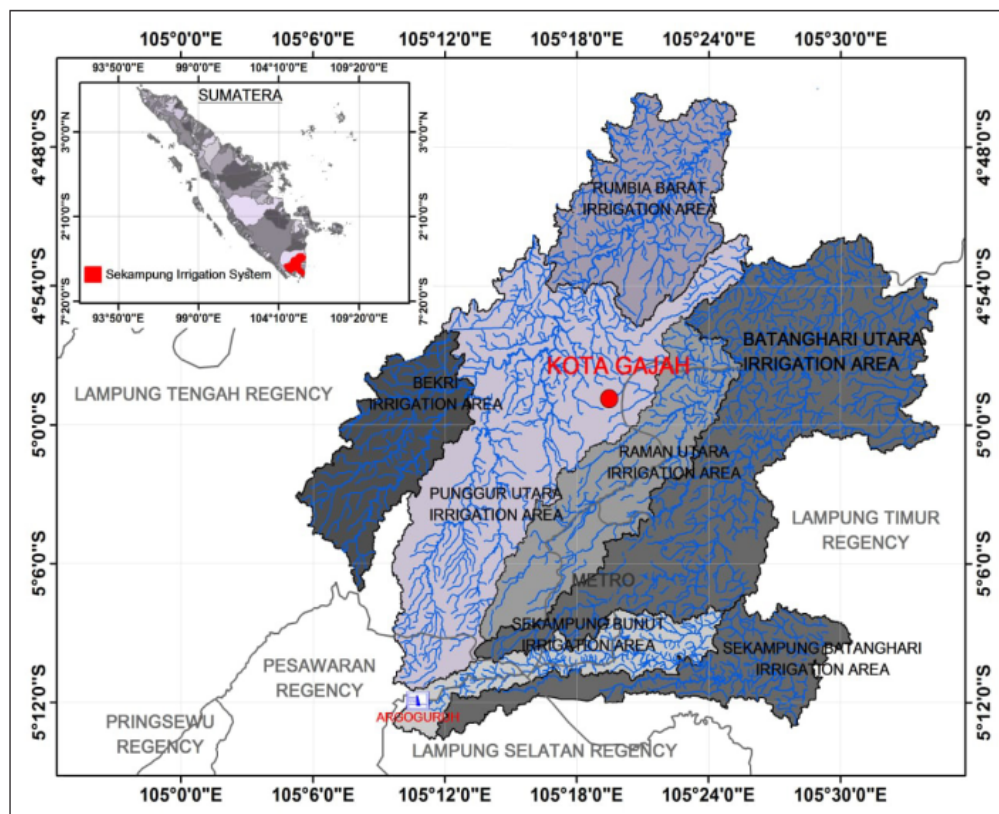


Figure 1. Study area

Bangun Rejo, Buyut Ilir, and Buyut Utara), and each village is managed by a WUA. This research was conducted in the village of Sumber Rejo, where the potential and functional areas of paddy rice fields are 304 ha and 238 ha, respectively.

WUA Harapan Maju at Sumber Rejo Village

WUA Harapan Maju already has a legitimate organisational structure, consisting of a chairman, secretary, treasurer, and an irrigation water distribution regulator who has different duties and responsibilities. The position, status, and role of the caretaker, along with other group members, is described in detail in the group's organisational structure. In this study, the group participation of WUA Harapan Maju was studied. A questionnaire was distributed to group members and included several assessment categories that aimed to represent group participation.

The sample was determined using the probability sampling method (random sample), with a cluster sampling technique. Samples were taken from the distribution of tertiary channels in Sumber Rejo Village. Then, as many samples as were needed were randomly drawn from the cluster. The number of farmers who joined the WUA Harapan Maju, Sumberejo Village is 434. To determine the number of samples to be examined, the Slovin formula was used, and by assuming a margin error of 10%, the sample size obtained was 80 farmers.

Variable

In this research, independent variables consist of some socio-economic characteristics of the farmers, and the dependent variable consists of operational and maintenance irrigation (Table 1).

Table 1
Dependent and independent variables

Independent variable (X)	Dependent variable (Y)
Individual Farmers' Characteristics <ul style="list-style-type: none"> • Age (X₁) • Level of Education (X₂) • Farming experience (X₃) • Size of Land (X₄) • Number of Family Dependents (X₅) • Income (X₆) 	Irrigation management (Y)
Group Characteristics <ul style="list-style-type: none"> • Group Participation (X₇) 	

Group Participation Criteria

In this research, group dynamics focus on group members' participation, with indicators of group participation shown in Table 2. These indicators include participation in group goals, participation in group activities, participation in decision making and participation in interaction. Table 3 presents variables of irrigation management, including irrigation channel network, irrigation structure, maintenance, irrigation water, frequency of water distribution, and suitability of the schedule of water distribution.

Before doing further analysis, validity and reliability tests were performed to evaluate the accuracy and precision of the variables, as well as the consistency and stability of the questionnaire. The result of the validity test for variables 1 to 7 (representing farmers' age, farmers' education, farmers' dependents, farmers' experience, farmers' land area, farmers' income, and group participation respectively) shows that t_{computed} values for most variables are larger than t_{table} values, so that the results of the validity test are valid, except for variable 1, farmers' age. Furthermore, the reliability test found that R_{computed} is 0.3425, which is larger than R_{table} , meaning that the questionnaire is consistent and robust.

Each of the seven variables is grouped into three categories and scored 1 to 3 in the ascending order. For example, level of education (X2) is grouped into elementary school, junior high school, and senior high school and higher. For analysis purpose, it is given the scores of 1, 2 and 3 for elementary school, junior high school, and senior high school and higher, respectively. Likert scale is used in the analysis using the scores of 1, 2 and 3 assigned to be poor, adequate, and good, respectively. Correlation analysis between variables is analysed using the Pearson product moment. Then multiple linear regression analysis is applied to quantify the strength of the relationship between the dependent and the independent variables.

Table 2
Variables of group participation

Variable	Indicator	Number of questions
Group Participation	a. Participation in group goals	7
	b. Participation in group activities	11
	c. Participation in decision making	7
	d. Participation in interaction	3

Table 3
Variables of irrigation management

Variable	Indicator
Irrigation Management	a. Irrigation channel network
	b. Irrigation structure
	c. Maintenance
	d. Irrigation water
	e. Frequency of water distribution
	f. Suitability of the schedule of water distribution

RESULTS AND DISCUSSION

Characteristics of Respondents

Based on the calculation of the sample required, 80 respondents participated in this study. The farmers' answers on the questionnaire are classified into three categories for each variable. Age is one aspect of demographic characteristics that can influence participants' activities. It is known from the questionnaire that the youngest respondent is 22 years old, and the oldest is 76 years old. The average age of respondents in the village of Sumberejo is 49.3 years old. Based on the division of farmers' interval categories, the percentage of farmers aged between 21–40, 41–59, and 60–80 years old is 30%, 42.5%, and 27.5% respectively. The survey suggests that the highest percentage being 42.5% for the interval of 41–59 years old.

Farmers dependents are classified into three categories (i.e., 0–2 children, 3–4 children, and 5–6 children). It was found from the questionnaire that the largest percentage is 61.25% for farmers having 3–4 children, and the smallest percentage is 15% for farmers having 0–2 children. It can be said that the middle category, with 3–4 children, makes up most farmers' dependents.

The education levels of the respondents are classified into three categories (i.e., elementary school, junior high school, and senior high school and higher). The survey found that the largest percentage of respondents were formally educated until elementary school (48.75%), while the smallest percentage of respondents were educated until senior high school or higher (21.25%). This means that the farmers participating in WUA Harapan Maju still have a low level of education.

The farming experience of the respondents is divided into three categories (2–21 years, 22–41 years, and 42–60 years), with the highest percentage being 47% for 2–21 years' experience in farming, and the lowest being 25% for farmers having 42–60 years' experience in agriculture. The results suggest that most farmers have the least amount of farming experience (i.e., between 2 to 21 years).

The land area owned by respondents is classified into three categories. The percentages for land areas of 0.125–0.425 ha, 0.426–0.726 ha, and ≥ 0.727 ha are 33.75%, 32.5%, and 33.75% respectively. It is observed that there is no significant difference in the percentage of the land area owned by respondents.

The level of income is divided into three categories: <Rp2,000,000 per month, Rp2,000,000 to Rp4,900,000 per month, and \geq Rp5,000,000 per month. The largest percentage is 61.25% (i.e., farmers with income from farming of <Rp2,000,000, while the smallest percentage is 10% for farmers with farm income \geq Rp5,000,000). It was found that farmers joining WUA Harapan Maju are still in the category of having a low farming income.

The result of farmers' characteristics in WUA Harapan Maju, Sumber Rejo Village, Kota Gajah District, Central Lampung Regency is shown in Table 4.

Table 4
Résumé of farmers' characteristics

Category	Percentage
Age in years (X_1)	
22–0	30
41–59	42.5
12 60–76	27.5
Level of education (X_2)	
Elementary School	48.75
Junior High School	30
≥ Senior High School	21.25
Farming experience (years) (X_3)	
2–21	47.5
22–41	27.5
42–60	25
Size of Land (X_4)	
0.125–0.425	33.75
0.426–0.726	32.5
≥ 0.727	33.75
Number of family dependents (X_5)	
0–2	15
3–4	61.25
5–6	23.75
Income in rupiahs (X_6)	
< Rp2,000,000	61.25
Rp,2000,000–Rp4,900,000	26.25
≥ Rp. 5,000,000	12.50

Farmers' Participation in WUA Harapan Maju

Based on the 28-question survey, the respondents' highest total score was 67, and the lowest was 41, with an average score of 58. Table 5 shows the scores for each variable in Group Participation. Based on that result, the farmers' participation in WUA Harapan Maju, Sumber Rejo Village is "barely" adequate. Farmers care about the group's goals, and farmers interact well, which is shown by the scores of 2.580 and 2.325 for the variable's

Table 5
Average score for the group participation of WUA Harapan Maju

Group Participation	Av. Total Score	Std Dev.	Average Score
Goal	18	1.925	2.580
Activities	18	3.700	1.636
Decision Making	15	2.597	2.107
Interaction	7	1.302	2.325
			2.162

Remarks: responses are weighted 1–3 (from poor to good)

“goal” and “interaction”, respectively. In decision making, the participation of farmers is sufficient, as evidenced by the score of 2.107. However, only some farmers are actively involved in all operations and maintenance activities, which is shown by the average score of 1.636 for the “activities” variable.

Irrigation Management

Regarding irrigation management, some aspects respondents were asked about include the performances of the irrigation channel network; irrigation structures; maintenance of the irrigation channel and structures; sufficiency of irrigation water for paddy fields; sufficiency of water distribution during one planting period; and suitability of water distribution with the predetermined schedule. Table 6 presents the average scores of the variables in irrigation management. The scores which have scores greater than 2 are “maintenance”, followed by “frequency of water distribution”, while other variables score less than 2. In general, farmers believe that the irrigation management needs to be improved shown by the average score of all variables, 1.875, which is categorised as “barely” adequate.

Table 6
Average score of irrigation management

Operations and Maintenance	Standard Deviation	Average Score
Irrigation channel network	0.600	1.763
Irrigation structures	0.569	1.575
Maintenance	0.656	2.489
Irrigation water	0.613	1.438
Frequency of water distribution	0.792	2.175
Suitability of the schedule	0.828	1.813
		1.875

Remarks: responses are weighted 1–3 (from poor to good)

Irrigation Network in Sumber Rejo Village

The existing condition of primary and secondary irrigation channels in the Punggur Utara irrigation area is mostly made of permanent structures. For tertiary channels, especially in the research area (including BPU 15 Ki 1, BPU 15 Ki 2, BPU 15 Ka, and BF 1 Ka), almost the entire channels are made of mounted stone. Figure 2 shows the top view of the study area, with the irrigation structures of BPU 15 Ki 1, BPU 15 Ki 2, BPU 15 Ka, and BF 1 Ka. Figure 3 presents the conditions of the gates, demonstrating that the surrounding of gate BF 1 Ka was full of trash. Figure 4 shows some cracks in several parts of the channels, as well as weeds growing on the channel banks.

The sufficiency of the irrigation network as a means for delivering irrigation water to the field can be measured through the channel density (CD) and structure density (SD) of irrigation networks. CD is defined as channel length (m) divided by the served area (ha), and it can be considered as sufficient when $CD \geq 50$ m/ha. Structure density, SD, is defined as the number of structures divided by the total area of the paddy field. The structure density is considered to be sufficient when $SD \geq 0.1$.

Information regarding the irrigation network in Sumber Rejo Village, including the channel length, land area, tertiary and quarterly boxes, and culverts, were obtained from the Punggur Utara Irrigation Area Office. Table 7 presents the density for the channels, and Table 8 shows the density of the structures. From the channel and structure densities presented in Tables 8 and 9, it can be said that the tertiary irrigation canal of BPU 15 at Sumber Rejo Village is inadequate both for channel and network densities.



Figure 2. Top view of the study area, with the irrigation structures of BPU 15 Ka, BPU 15 Ki1, BPU 15 Ki2, and BF 1 Ka

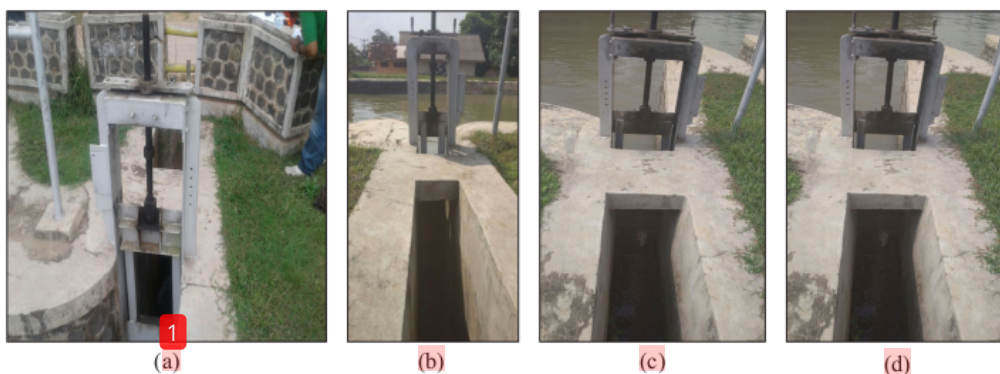


Figure 3. The gate conditions of (a) BPU 15 Ka, (b) BPU 15 Ki1, (c) BPU 15 Ki2, and (d) BF 1 Ka (from left to right respectively) in the Punggur Utara irrigation area at Sumber Rejo Village



Figure 4. Channel conditions in the Punggur Utara irrigation area at Sumber Rejo Village

Table 7
Structures in BPU 15 Tertiary Canal at Sumber Rejo Village

Types of structures	BPU 15 Tertiary Channels			
	BPU 15 Ki 1	BPU 15 Ki 2	BPU 15 Ka	BF 1 Ka
Channel length (m)	400	2100	2650	2015
Potential area (ha)	30	40	107	107
Functional area (ha)	25	45	73	98
Tertiary Box (unit)	1	2	4	2
Quarternary Box (unit)	-	1	4	1
Culverts (unit)	-	-	-	-

Table 8
The density of Tertiary Canal BPU 15 at Sumber Rejo Village

No	Channels	A (ha)	Channel length (m)	CD (m/ha)	Remarks
1.	BPU 15 Ki 1	25	400	16	Inadequate
2.	BPU 15 Ki 2	45	2100	46.67	Inadequate
3.	BPU 15 Ka	73	2650	36.30	Inadequate
4.	BF 1 Ka	98	2015	20.56	Inadequate
Average				29.88	Inadequate

Table 9
The density of structures in BPU 15 At Sumber Rejo

No	Channels	A (ha)	Total boxes and culverts	SD (unit/ha)	Remarks
1.	BPU 15 Ki 1	25	1	0.04	Inadequate
2.	BPU 15 Ki 2	45	3	0.07	Inadequate
3.	BPU 15 Ka	73	8	0.07	Inadequate
4.	BF 1 Ka	98	3	0.03	Inadequate
Average				0.05	Inadequate

Statistical Analysis

Correlation between variables was conducted using the Pearson product moment, and the regression statistics found that the R² determination coefficient was 0.78, which is greater than 0.22, the Strongswan R table for a 5% error level for the number of samples being 80. This shows that there is a positive and significant relationship between the independent variables and dependent variables. It can be said that there is significant influence between variables of age (X1), education (X2), total dependents (X3), farming experience (X4), land size (X5), farming income (X6), and group participation (X7) on water management (Y), amounting to 78%, with the influence of variations outside the model being 22%.

As there is a correlation between variables and a significant impact of the independent variables to the dependent variable, the next step was to perform multiple linear regression analysis to find the appropriate equation. Table 10 shows the result of this analysis. Based on the Table 10, we know that the P-value of variable X1 is 0.5411 larger than the critical confidence limit, which is 0.05. This means that age, variable X1, has no effect on the variable of operations and maintenance (Y). Omitting variable X1, but still using the result of multiple linear regression analysis, the Equation 1 becomes as follows:

$$Y = 1.7377 + 0.72 X2 + 1.19 X3 + 0.76 X4 + 0.76 X5 + 0.74 X6 + 0.92 X7 \quad (1)$$

Table 10
Multiple linear regression

9 Intercept	Coefficients	Standard Error	t Stat	P-value	Lower 95%	Upper 95%
	1.7377	0.7529	2,3081	0,0239	0,2369	3,2386
X1	-0.1175	0.1914	-0.6140	0.5411	-0.4992	0.2641
X2	0.7096	0.1572	4.5138	0.0000	0.3962	1.0229
X3	1.1907	0.1873	6.3565	0.0000	0.8173	1.5641
X4	0.7637	0.2102	3.6336	0.0005	0.3447	1.1827
X5	0.7620	0.1617	4.7125	0.0000	0.4396	1.0843
X6	0.7420	0.1732	4.2849	0.0001	0.3968	1.0872
X7	0.9282	0.1466	6.3307	0.0000	0.5369	1.2205

5 Interpretation of the Results

Based on the results of the study, all variables have a direct relationship to the irrigation management, which in this case, mostly related to the farmers' irrigation networks. However, of all these factors, age does not have a significant relationship or has a very low relationship. This is supported by the results of the validity test that found the age variable was invalid and the result of regression analysis, showing that the age variable has no effect on operations and maintenance activities. This means that regardless of age,

farmers, both young and old, will be involved in carrying out operations and maintenance activities in the irrigation network.

The most influential variable on operations and maintenance activities is farmers' dependents (X3), being 1.19. This indicates that the greater the number of farmers' dependents, the more actively involved the farmers will be in operational and maintenance activities. Farmers who have more dependents are aware that the operation and maintenance of their irrigation network will have an impact on their farming and thus their economic situations. Thus, farmers with more dependents are willing to get more involved in operations and maintenance to meet their economic needs.

The next significant variable of the individual farmer on the activities in operations and maintenance is the land area variable (X5). This shows that farmers' land area determines farmers' involvement in operations and maintenance activities in the irrigation network. Farmers who have a larger land area will be more active in carrying out operations activities and maintenance of irrigation networks for the good of their farming. They will pay more attention to how the operating system works so that their land can be irrigated well, and farmers will often maintain their irrigation network, such as through cleaning trash and weeds from canals and repairing damaged channels.

Farming income (X6) presented in this study is the whole incomes of the farmers both from farming and non-farming. From all respondents, 61.25% have a low income, 26.23% have medium income and only 12.5% have a high income. Some studies show that participation in non-farm activities has a positive impact on household welfare by raising income levels (Ali et al., 2015; Zerayesus et al., 2017). However, there is a concern if non-farming activities generate much income, farmers may pay less attention to the operation and maintenance activities and even leave their farm. A study showed that there is social economic motivation for farmer to leave farming sector in Central Java, Indonesia (Farhani, 2009).

The constant of 1.7377 indicates that the level of the operations and maintenance performed by farmer members of WUA Harapan Maju is not considered good. This is based on the constant value obtained from the regression analysis, which is less than 2. This value is based on the scoring of the answers in the questionnaire distributed to the respondents. The results of the evaluation of operations and maintenance activities based on respondents' answers are as follows:

- Existing irrigation networks are still not sufficient for the farmers. This is also supported by the results of the channel density, which has an average value of 29.88. This value is below the standard of channel density ranging from 50 to 100 m/ha.
- Well-functioning irrigation structures are less than 50%. This is also supported by irrigation structure density, which has an average value of 0.05. This value is below the sufficient values of structure density ranging from 0.11 to 0.40 units/ha.

- The irrigation water discharge is relatively small. By irrigating the land four to five times during one planting period, farmers feel that they have sufficient water. However, water distribution sometimes does not suit the predetermined schedule.

This study has shown that the operation and maintenance activities performed by the WUA farmer members in Harapan Maju was not good. Meanwhile, the results of the analysis show that both channel and irrigation structure densities are not met the common standards. The adequacy of the irrigation infrastructure seems to have effect on farmer participation in operation and maintenance. Therefore, if the government conducts such irrigation works in the future, so that the density of the structures and channels is sufficient (increased more in comparing to current status) farmers are expected to carry out the operation and maintenance activities better.

It is also suspected that poor operation and maintenance activities done by the farmers are also influenced by their low income. In the Government Regulation of the Republic of Indonesia No. 20/2006 (related to irrigation) it states that the participation of the farmer community should be in the form of contributions, orientation, time, energy, materials, and funds. As mentioned earlier, the majority of the farmer members (i.e. 61.25%) have low income, so that they may not be able to contribute sufficiently in terms of funding for the operation and maintenance activities.

It becomes one of the recommendations of this study, that the government improves irrigation infrastructure especially the densities of channels and structures. In addition, to enhance the participation of farmers in irrigation scheme management, especially in operations and maintenance of hydraulic works, the government may provide incentives scheme to WUAs which capable of doing the operation and maintenance well. The incentives may be awarded periodically based on selection system at city/regency, province, or national levels.

CONCLUSION

Based on the characteristics of farmers joining in WUA Harapan Maju at Sumber Rejo Village, it can be concluded that the major motivations for being more active in irrigation management are the number of farmers' dependents and the land area owned by farmers. Interestingly, farmers' age does not have a significant relationship to irrigation management. Overall, the group participation of WUA Harapan Maju is "barely" adequate, although farmers' low activity levels regarding operations and maintenance can be shown by trash found near the irrigation gate and some unrepaired channels. The performance of irrigation management by WUA Harapan Maju at Sumber Rejo can be categorised as "barely" adequate and needs to be addressed. Irrigation management can be improved by getting farmers to participate more in operation and maintenance, as well as by improving the irrigation structures and networks.

ACKNOWLEDGEMENT

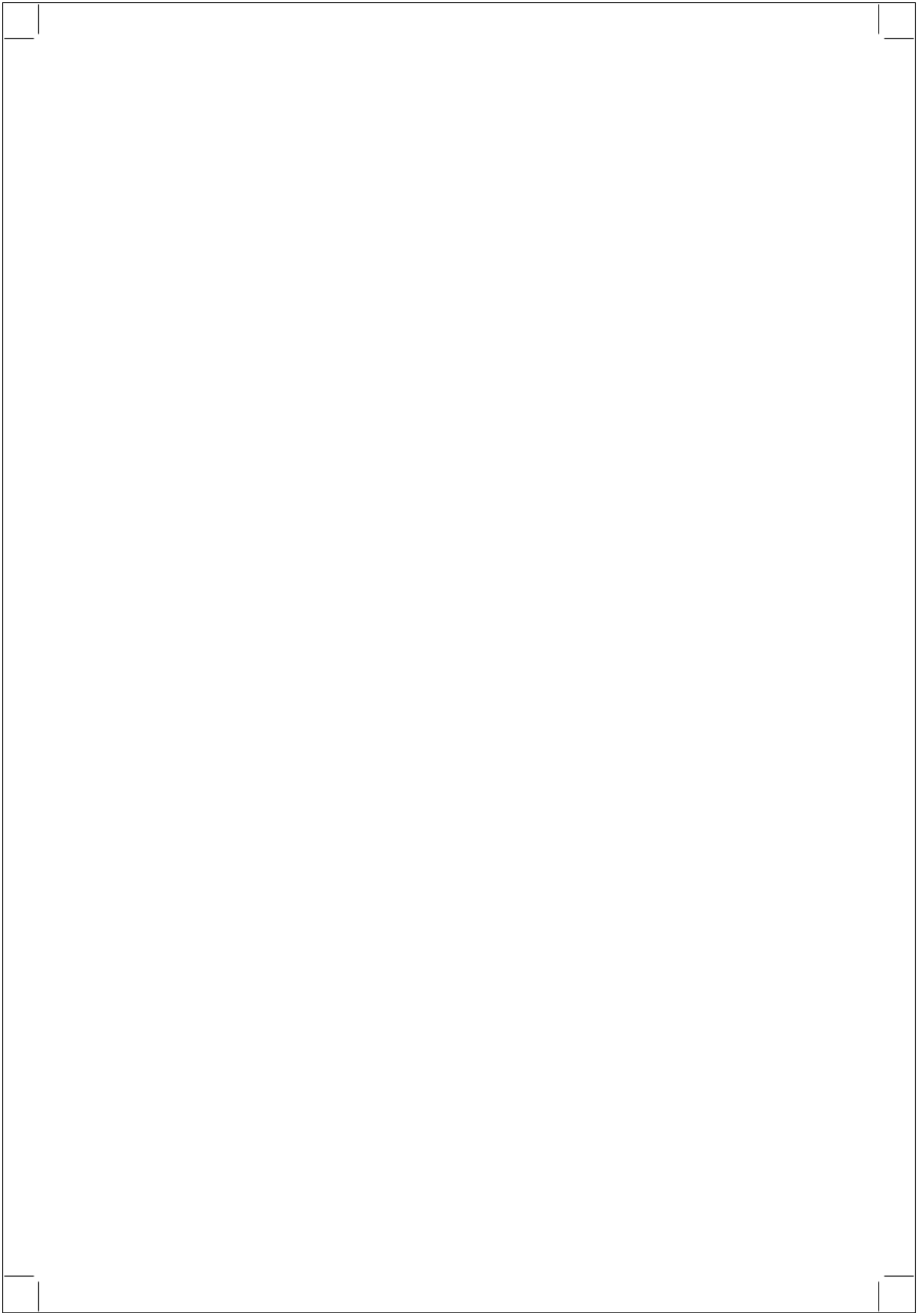
The authors thank the Ministry of Research and Higher Education Indonesia for the funding through applied research scheme.

REFERENCES

- Abermety, C. L. (2010). Governance of irrigation systems: does history offer lessons for today? *Irrigation and Drainage: The journal of the International Commission on Irrigation and Drainage*, 59(1), 31-39. <https://doi.org/10.1002/ird.552>
- Alaerts, G. J. (2020). Adaptive policy implementation: Process and impact of Indonesia's national irrigation reform 1999-2018. *World Development*, 129, 1-14. <https://doi.org/10.1016/j.worlddev.2020.104880>
- Ali, A., Erenstein, O., & Rahut, D. B. (2015). Impact of gender participation in non-farming activities on household income and poverty levels in Pakistan. *Work*, 52(2), 345-351. <https://doi.org/10.3233/WOR-152103>
- Azhar, A. W. M, Nashriyah, M., Hudzairi, H. R. M., Moneruzzaman, K. M., Amir, H. S., Rohaizad, M. R. M., & Ali, A. M. (2014). Effects of irrigation frequencies on aerial agro-morphological parameters of *Dioscorea hispida* Dennst. (Dioscoreaceae). *Journal of Applied Sciences Research*, 8(9), 27-37. <http://dx.doi.org/10.2139/ssrn.2812557>
- Baldwin, E., Washington-Ottombre, C., Dell'Angelo, J., Cole, D., & Evans, T. (2016). Polycentric governance and irrigation reform in Kenya. *Governance: An International Journal of Policy, Administration, and Institution*, 29(2), 207-255. <https://doi.org/10.1111/gove.12160>
- Carracelas, G., Hombuckle, J., Rosas, J., & Roel, A. (2019). Irrigation management strategies to increase water productivity in *Oriza sativa* (rice) in Uruguay. *Agricultural Water Management*, 222, 161-172. <https://doi.org/10.1016/j.agwat.2019.05.049>
- Desrimon, A., & Fiatno, A. (2018). Analysis of the impact of social, economic and group aspects of Water User Association on operation and maintenance of irrigation network. *Integrated Industrial Engineering Journal*, 1, 46-54.
- Dirwai, T. L., Senzanje, A., & Mudhara, M. (2019). Water governance impacts on water adequacy in smallholder irrigation schemes in KwaZulu-Natal province, South Africa. *Water Policy*, 21(1), 127-146. <https://doi.org/10.2166/wp.2018.149>
- Farhani, A. (2009). *Socio economic motivation of farmers changing their job from farming sector to furniture industrial sector in Serenan village Juwiring district Klaten regency* [Thesis]. Sebelas Maret University, Surakarta, Indonesia.
- FAO. (2007). *Irrigation management transfer: Worldwide efforts and results*. Food and Agricultural Organization of the United Nations.
- Fulazzaky, M. A. (2017). Participation of farmers in irrigation water management in Indonesia: A review. *Irrigation and Drainage*, 66, 182-191. <https://doi.org/10.1002/ird.2085>

- Gany, A. H. A., Sharma, P., & Singh, S. (2019). Global review of institutional reforms in the irrigation sector for sustainable agricultural water management, including water users' associations. *Irrigation and Drainage*, 68(1), 84-89. <https://doi.org/10.1002/ird.2305>
- Ghosh, S., Kolady, D. E., Das, U., Gorain, S., Srivastava, S. K., & Mondal, B. (2019). Spatio-temporal variations in effects of participatory irrigation management (PIM) reform in India: A panel data analysis. *Agricultural Water Management* 222, 48-61. <https://doi.org/10.1016/j.agwat.2019.05.042>
- Huamanchumo, J., Peñay, S. L., & Hendriks, J. (2008). Developing capacity in water users' organisations: The case of Peru. *Irrigation and Drainage* 57, 300-310. <https://doi.org/10.1002/ird.432>
- Hudzari, R. M., Syazili, R., Ssomad, M. A. H. A., Shokeri, A. F. M., & Husin, N. A. (2016). Design and development of innovative highland water filtration system. *World Journal of Engineering and Technology*, 4, 383-390. <https://doi.org/10.4236/wjet.2016.43037>
- Khalkheili, T. A., & Zamani, G. H. (2009). Farmer participation in irrigation management: The case of Doroodzan dam irrigation network, Iran. *Agricultural Water Management*, 96(5), 859-865. <https://doi.org/10.1016/j.agwat.2008.11.008>
- Letsoalo, S., & Van Averbeke, W. (2004, November 8-11). When water is not enough: Institutions, organisations, and conflicts surrounding the sharing of irrigation water at a smallholder scheme in South Africa. In *Proceedings of the Workshop on 'Water Management for Local Development'*, WRM (pp. 362-373). Loskopdam, Pretoria.
- Mateos, L., López-Cortijo, I., & Sagardoy, J. A. (2002). SIMIS: the FAO decision support system for irrigation scheme management. *Agricultural Water Management*, 56(3), 193-206. [https://doi.org/10.1016/S0378-3774\(02\)00035-5](https://doi.org/10.1016/S0378-3774(02)00035-5)
- Meena, R. P., Karnam, V., Tripathi, S. C., Jha, A., Sharma, R. K., & Singh, G. P. (2019). Irrigation management strategies in wheat for efficient water use in the regions of depleting water resources. *Agricultural Water Management*, 214, 38-46. <https://doi.org/10.1016/j.agwat.2019.01.001>
- Mollinga, P., & Bolding, A. (2004). *The politics of irrigation reform*. Ashgate Publishing.
- Moustafa, M. M. (2004). Can farmers in Egypt shoulder the burden of irrigation management? *Irrigation and Drainage Systems*, 18(2), 109-125. <https://doi.org/10.1023/B:IRRI.0000040249.12754.c8>
- Mukherji, A., Fuleki, B., Shah, T., Suhardiman, D., Giordano, M., & Weligamage, P. (2009). *Irrigation reform in Asia: A review of 108 cases of irrigation management transfer*. International Water Management Institute.
- Poddar, R., Qureshi, M. E., & Syme, G. (2011). Comparing irrigation management reforms in Australia and India - A special reference to participatory irrigation management. *Irrigation and Drainage*, 60(2), 139-150. <https://doi.org/10.1002/ird.551>
- Rap, E. (2006). The success of a policy model: Irrigation management transfer in Mexico. *Journal of Development Studies*, 42(8), 1301-1324. <https://doi.org/10.1080/00220380600930606>
- Sehring, J. (2007). Irrigation reform in Kyrgyzstan and Tajikistan. *Irrigation and Drainage Systems*, 21, 277-290. <https://doi.org/10.1007/s10795-007-9036-0>

- Suhardiman, D., & Giordano, M. (2014). Is there an alternative for irrigation reform? *World Development* 57, 91-100. <https://doi.org/10.1016/j.worlddev.2013.11.016>
- Supriyadi, E. (2008). *The relationship between group dynamics of Water User Association and maintenance of irrigation infrastructure in Polokarto District Sukoarjo Regency*. [Unpublished dissertation]. Universitas Sebelas Maret, Surakarta, Indonesia.
- Valipour, M. (2014). A comprehensive study on irrigation management in Asia and Oceania. *Archives of Agronomy and Soil Science*, 61(9), 1247-1271. <https://doi.org/10.1080/03650340.2014.986471>
- Vandersypen, K., Keita, A. C. T., Lidon, B., Raes, D., & Jamin, J. Y. (2008). Didactic tools for supporting participatory water management in collective irrigation schemes. *Irrigation and Drainage Systems*, 22(1), 103-113. <https://doi.org/10.1007/s10795-007-9042-2>
- Zereyesus, Y. A., Embaye, W. T., Tsiboe, F., & Amanor-Boadu, V. (2017). Implications of non-farm work to vulnerability to food poverty-recent evidence from Northern Ghana. *World Development*, 91, 113-124. <https://doi.org/10.1016/j.worlddev.2016.10.015>



Farmers' Participation in Irrigation Management in the Punggur Utara Irrigation Area, Indonesia

ORIGINALITY REPORT

10%

SIMILARITY INDEX

PRIMARY SOURCES

1	psasir.upm.edu.my Internet	104 words — 2%
2	Mohamad Ali Fulazzaky. "Participation of farmers in irrigation water management in Indonesia: a review", <i>Irrigation and Drainage</i> , 2017 Crossref	67 words — 1%
3	clearafred.wits.ac.za Internet	40 words — 1%
4	Souvik Ghosh, Deepthi Elizabeth Kolady, Usha Das, Subrato Gorain, Shivendra Kumar Srivastava, Bitan Mondal. "Spatio-temporal variations in effects of participatory irrigation management (PIM) reform in India: A panel data analysis", <i>Agricultural Water Management</i> , 2019 Crossref	35 words — 1%
5	icet.fip.um.ac.id Internet	28 words — 1%
6	idoc.pub Internet	19 words — < 1%
7	digital.library.adelaide.edu.au Internet	18 words — < 1%
8	Murat Yakubov. "ASSESSING IRRIGATION PERFORMANCE FROM THE FARMERS'	17 words — < 1%

PERSPECTIVE: A QUALITATIVE STUDY", Irrigation and
Drainage, 2012

Crossref

-
- | | | |
|----|---|-----------------|
| 9 | mafiadoc.com
Internet | 16 words — < 1% |
| 10 | link.springer.com
Internet | 13 words — < 1% |
| 11 | academicjournals.org
Internet | 11 words — < 1% |
| 12 | www.pdiconnect.com
Internet | 11 words — < 1% |
| 13 | scholarspace.manoa.hawaii.edu
Internet | 11 words — < 1% |
| 14 | Souvik Ghosh. "Group dynamics effectiveness of water user associations under different irrigation systems in an eastern Indian state", Irrigation and Drainage, 2009
Crossref | 11 words — < 1% |
| 15 | moam.info
Internet | 9 words — < 1% |
| 16 | Dimas Brilian Syaban Pramana, Mohammad Rondhi. "ANALYSIS OF CONTRACT FARMING PATTERN AND INCOME COMPARISON OF POTATO FARMERS ON ATLANTIC AND GRANOLA VARIETIES", E3S Web of Conferences, 2020
Crossref | 9 words — < 1% |
| 17 | bmcpublichealth.biomedcentral.com
Internet | 9 words — < 1% |
| 18 | Wang, Yahua, and Sicheng Chen. "Breaking the dilemma of agricultural water fee collection in | 8 words — < 1% |

-
- 19 www.tandfonline.com 8 words — < 1%
Internet
-
- 20 archives.kdischool.ac.kr 8 words — < 1%
Internet
-
- 21 fount.aucegypt.edu 8 words — < 1%
Internet
-
- 22 iwmi.catalog.cgiar.org 8 words — < 1%
Internet
-
- 23 pub.epsilon.slu.se 8 words — < 1%
Internet
-
- 24 Ghumman, A. R., S. Ahmad, H. N. Hashmi, and R. A. Khan. "COMPARATIVE EVALUATION OF IMPLEMENTING PARTICIPATORY IRRIGATION MANAGEMENT IN PUNJAB, PAKISTAN : IMPLEMENTING PARTICIPATORY IRRIGATION MANAGEMENT IN PUNJAB, PAKISTAN", *Irrigation and Drainage*, 2013. 8 words — < 1%
Crossref
-
- 25 onlinelibrary.wiley.com 8 words — < 1%
Internet
-
- 26 repository.nwu.ac.za 8 words — < 1%
Internet
-
- 27 Senanayake, Nari, Aditi Mukherji, and Mark Giordano. "Re-visiting what we know about Irrigation Management Transfer: A review of the evidence", *Agricultural Water Management*, 2015. 7 words — < 1%
Crossref
-
- 28 Maha Elbana, Noura Bakr, Fawzi Karajeh. "Chapter 174 Implication of Geo-Informatics 6 words — < 1%

(GIS/RS) on Agricultural Irrigation Management: The State of the Art", Springer Nature, 2017

Crossref

EXCLUDE QUOTES OFF

EXCLUDE MATCHES OFF

EXCLUDE BIBLIOGRAPHY ON