

# THE ACTIVITY ASSAY OF PROTEASE, CELLULASE, AMYLASE, XYLANASE AND MANNANASE FROM BACILLUS SP. AS A CANDIDATE OF PROBIOTICS

*By* Sumardi Sumardi



4

## THE ACTIVITY ASSAY OF PROTEASE, CELLULASE, AMYLASE, XYLANASE AND MANNANASE FROM *BACILLUS* SP. AS A CANDIDATE OF PROBIOTICS

Dr. Sumardi\*, Christina Nugroho Ekowati, and Rismayanti

Biology Departement, Faculty of Mathematic and Natural Science, University of Lampung J. Prof. Dr. Soemantri Brodjonegoro No. 1 Bandar Lampung 35145 Bandar Lampung, Indonesia.

\*Corresponding Author: Dr. Sumardi

Biology Department, Faculty of Mathematic and Natural Science, University of Lampung. Jl. Prof. Dr. Soemantri Brodjonegoro No. 1 Bandar Lampung 35145 Bandar Lampung, Indonesia.

Article Received on 13/01/2019

Article Revised on 03/02/2019

Article Accepted on 24/02/2019

15

### ABSTRACT

The purpose of this study was determineted the potential for five strains of *Bacillus* sp. KPP212, *Bacillus* sp IP121, *Bacillus* sp UJ131, *Bacillus* sp UJ132, and *Bacillus* sp SB141 isolated from the mangrove forest ecosystem. The bacteria were selected to produce hydrolase enzymes (proteases, cellulases, amylases, xylanases, and mannanase s). Enzyme production was also carried out on production media with shrimp and fish feed as main substrate. The method consisted of assay of selection and enzyme activity. The data analyzed descriptively. The research showed there are four strains that produce protease and xylanase enzyme namely *Bacillus* sp. KPP212, *Bacillus* sp. IP121, *Bacillus* sp. UJ131, and *Bacillus* sp. UJ132. The highest protease enzyme activity is *Bacillus* sp UJ131 i.e. 0.07 U ml<sup>-1</sup>. The highest xylanase enzyme is *Bacillus* sp UJ131 i.e. 0.05 U ml<sup>-1</sup>. *Bacillus* sp. UJ132 is a bacteria that produced three kind of enzyme with the highest cellulase activity of 0.06 U ml<sup>-1</sup>. The five bacteria did not produce amylase and mannanase. The 27 duction of enzyme from shrimp feeds medium yielded protease activity of 0.05 U ml<sup>-1</sup>, xylanase activity 3 of 0.2 U ml<sup>-1</sup>, and cellulase activity of 0.07 U ml<sup>-1</sup>. While, enzyme activity from fish feeds medium as follows: protease: 0.08 U ml<sup>-1</sup> xylana 14 0.31 U ml<sup>-1</sup>; cellulase: 0.15 U 14 i<sup>-1</sup>. While, production of enzyme 14 in fish feeds medium yielded protease activity i.e. 0.08 U ml<sup>-1</sup>; xylanase activity i.e. 0.31 U ml<sup>-1</sup>; and cellulase activity i.e. 0.15 U ml<sup>-1</sup>.

**KEYWORDS:** *Bacillus* sp, enzyme, probiotics, and shrimp feed.

### I. INTRODUCTION

The used of microbial probiotics in the shrimp farming sector have become a popular thing at the moment. Microbial probiotics were benefits of the host by increasing the absorption rate of nutrient value of feed, and improve host immune response to a disease and improve the quality of the surrounding environment.<sup>[1]</sup>

One common type of probiotic bacteria is *Bacillus* sp. Some *Bacillus* has been shown to suppress the population of *Vibrio* bacteria.<sup>[2]</sup> *Bacillus* sp. control the pathogen bacteria by producing antimicrobials in the stationary phase when the bacteria produ 26 secondary metabolites.<sup>[3]</sup> This is also supported by the results of else the study that stating the bacteria *Bacillus* sp. produce immunity and antimicrobials such as bacteriocin.<sup>[4]</sup> Other researchers also concluded that *Shewanella algae* was as candida 25 probiotic of juvenile *Penaeus monodon* to antagonistic against *Vibrio harveyi*, *V. parahaemolyticus* and *V. alginolyticus*.<sup>[5]</sup>

The ability of bacteria in producing enzymes is useful to increase chemical reactions of 10<sup>8</sup> to 10<sup>11</sup> times by

decreasing the energy of activation.<sup>[6]</sup> The ability of bacteria in producing hydrolase enzyme will help the process of breaking the nutrients contained in the feed thus absorption of nutritional value of animals can occur optimally.

Based on the description earlier, efforts should be made to solve the problems found in the aquaculture sector. Therefore, it was needed to select of microbial ability in producing hydrolase enzymes; prote 24 cellulases, amylases, xylanases and mannanases. This study was conducted to determine the ability of bacteria *Bacillus* sp. where will be candidates for probiotics to help shrimp digestibility and increase competition in bacterial cell growth.

### II. MATERIALS AND METHODS

The material used in this research is *Bacillus* sp. which is a collection of the Laboratory of Microbiology FMIPA University of Lampung. Five strains of probiotic *Bacillus* sp. (KPP212, IP121, UJ131, UJ132, and SB141) isolated from mangrove ecosystems, shrimp feed and artificial fish feed, Alcohol, Physiological Salt, Skim Milk,

Carboxmethyl Cellulose (CMC), NaCl, H<sub>2</sub>O, Starch, Casein, Folin Reagent, Buffer Phosphate, Buffer Citrate, Trichloroacetic Acid (TCA), Na<sub>2</sub>CO<sub>3</sub>, Standard Tyrosine, Dinitro Salicylic Acid (DNS), Xylan, Locust Bean Gum, Pepton, Beef Extract, Na<sub>2</sub>CO<sub>3</sub>, Sea Water Complete (SWC), NaCl, Congo red, Spiritus, Lugol, and Distilled water.

**Selection of proteolytic bacteria.** *Bacillus* sp. was grown on the Sea Water Complete (SWC) solid medium with the composition: bacto peptone 0.5 g, 0.1 g yeast extract, 0.3 ml glycerol, 75 ml of seawater, 25 ml distilled water, and 1.5 g agar + 2 grams of skim milk. Inoculated bacteria are incubated for 24 hours, proteolytic activity is characterized by the formation of clear zones around the colony.<sup>[7]</sup>

**Selection of cellulotic bacteria.** *Bacillus* sp. was grown on 100 ml of Sea Water Complete (SWC) medium + 2 grams of CMC (Carboxmethyl cellulose). The growing colonies were stained with 1% congo red when it was 24 hours old. After that it was washed with 10% NaCl solution. Clear zones were made of around the colonies indicate the existence of cellulotic activity.<sup>[8]</sup>

**Selection of amylolytic bacteria.** *Bacillus* sp. was grown on 100 ml media Sea Water Complete (SWC) solid + 2 grams of starch. After the media was incubated for 24 hours, the growing colony was stained with iodine solution. Clear zones were made of around the colony indicate the existence of amylolytic activity.<sup>[9,10]</sup>

**Selection of xylanolytic bacteria.** *Bacillus* sp. was grown on 100 ml media of Sea Water Complete (SWC) + 0.5 gram of Xylan beechwood, after incubation for 24 hours, the growing colonies were stained with 1% congo red and then washed with 10% NaCl solution. Clear zones were made of around the colony signify the existence of xylanolytic activity.<sup>[8]</sup>

**Selection of mannanolytic bacteria.** *Bacillus* sp. was grown on 100 ml media of Sea Water Complete (SWC) + 2 grams Locust bean gum, after incubation for 24 hours, growing colonies stained with congo red 1% then washed with 10% NaCl solution. Clear zones were made of around colonies indicate mannanolytic activity around the colony.<sup>[8]</sup>

**Calculation of enzymatic index.** The result of enzyme selective test is calculated by enzymatic index with the following formula.<sup>[11]</sup>

$$IP = \frac{\text{diameters of clear zone} - \text{diameters of colony}}{\text{diameters of colony}}$$

**Preparation of bacterial starter.** Strains of *Bacillus* sp. which have been regenerated on the SWC medium taken 1 ose and inoculated into 250 ml erlenmeyer containing 50 ml of SWC media. The bacteria starter medium was

incubated for 24 hours of the orbital shaker at room temperature at 120 rpm.

**Preparation of crude extract of the enzyme.** Bacteria *Bacillus* sp. which has been incubated for 24 hours is taken as 5 ml, then inoculated into each erlenmeyer containing SWC media 45 ml + each of the substrate for the five enzymes (skim milk CMC, starch, xylan and Locust bean gum). The bacterial-inoculated medium was incubated above the orbital shaker at a rate of 120 rpms for 24 hours. Then, production media in centrifuge with a temperature of 4° C with a speed of 10000 rpms for 15 minutes. The supernatant formed are the crude extract of the enzyme.

**Activity assay of protease enzyme.** The crude extracts protease enzyme were assay by making 3 series of test tubes containing the blank, standard, and sample solutions. The assay step is 0.5 ml of 2 mM phosphate buffer + casein is added into the three series tubes. For the blank tube was added aquades 0.1 ml, the standard tube was added 0.1 ml standard tyrosine, and in the sample tube are added 0.1 ml of crude extract of enzyme. All test tubes were incubated at 25°C for 10 minutes. After incubation, TCA is added into all 0.5 ml tube series. For the blank and standard tubes were added a crude extract from enzyme as much as 0.1 ml, then on the sample tube is added aquades as much as 0.1 ml. All series of solutions were centrifuged at 4 ° C. The supernatant was taken 0.375 ml then added by Na<sub>2</sub>CO<sub>3</sub> and folin reagents each of them 1.25 ml and 0.25 ml. After that it was incubated for 20 minutes, then read the absorbance at 578 nm wavelengths.

#### Activity Assay of cellulase enzyme, xylanase and mannanase

The activity of cellulase enzyme was assayed using DNS (Dinitro-salicylic acid) method by quantification of reducing sugars released from CMC solubilised in 0.05M phosphate buffer pH 7.0. Crude enzyme was added to 1% CMC in 0.05 M phosphate buffer and incubated at 25°C for 30 minutes. The reaction was stopped by addition of 1 ml of DNS reagent in the reaction mixture. Then the mixture was boiled in water at 100°C for 15 minutes. Reduction sugars liberated were determined by measuring absorbance at 575 nm spectrophotometer. One international unit (IU) of cellulase enzyme activity refers to the amount of enzyme that released 1 µM of glucose per ml of the sample per minute under assay conditions. The same method was also performed on the mannanase and xylanase enzyme assays. However, xylanase assay use xylan and mannanase assay use locust bean gum as substrate of enzyme

**Production of enzymes used shrimp and fish feed as substrate.** The fifth starter of *Bacillus* sp. which has been incubated for 24 hours is taken as much as 5 ml, then inserted the starter into erlenmeyer, each erlenmeyer containing media SWC 45 ml + shrimp feeds substrate as much as 1% of media volume. The culture of SWC

media was incubated on the orbital shaker at 120 rpms for 24 hours. After finish, the culture centrifuged with a temperature of 4° C with a speed of 10000 rpms for 15 minutes.

The supernatant are the crude extract of the enzyme. The production process of enzyme use fish feeds substrate is done same with step earlier. The same enzyme assay was also done with substrate of shrimp feed.

### III. RESULTS AND DISCUSSIONS

Base of the proteolytic and xylanolytic assay, there is 4 bacteria *Bacillus* sp that shows enzyme activity marked by the formation of clear zone around the colony. The

four bacteria are *Bacillus* sp. KPP212, *Bacillus* sp. IP121, *Bacillus* sp. UJ131, and *Bacillus* sp. UJ132 (Figures 1 and 2). In cellulolytic assay media, there is only 1 bacterium that produces cellulolytic activity namely *Bacillus* sp. UJ132 (Figure 3). While, the amilolytic and mannanolytic assay media, all the bacteria did not produce clear zones (Figures 4 and 5). The results of this selective assay of enzymatic activity will be used to determine the isolates to be assayed for their enzyme activities. *Bacillus* sp produced hydrolase enzyme namely protease, xylanase, cellulase, amylase, and mannanase (the following figure).

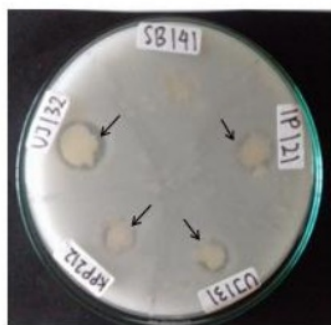


Figure 1. Signs ↙ produce protease enzymes

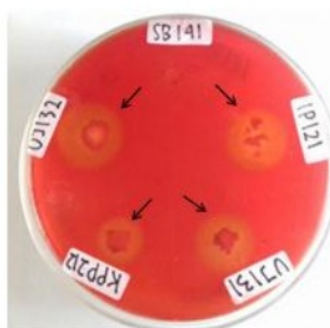


Figure 2. Signs ↙ produce xylanase enzymes



Figure 3. Signs ↙ produce cellulase enzymes



Figure 4. No isolates produced amilase enzyme



Figure 5. No isolated produced mannanase enzyme.



The enzymatic activity produced on each strain of *Bacillus* sp. is different. The largest proteolytic index was *Bacillus* sp. KPP212 with proteolytic index of 0.06. Xylanolytic activity in *Bacillus* sp. UJ131 produces an index of 0.07 which is also fairly high. While the highest cellulolytic index was produced by *Bacillus* sp. UJ132 of 0.03. From the results of qualitative assay is known that

there will only be four bacteria that assayed the activity of enzymes with liquid media. The four bacteria are *Bacillus* sp. KPP212, *Bacillus* sp. IP121, *Bacillus* sp. UJ131, and *Bacillus* sp. UJ132. *Bacillus* sp. SB141 was not assayed for its enzyme activity because it did not show positive result of selective assay (Table 1).

**Table 1: Proteolytic, cellulolytic and Xylanolytic Index.**

Bacteria	Origin of isolates	Index value				
		Proteolytic	Xylanolytic	cellulolytic	Amylolytic	Mannanolytic
<i>Bacillus</i> sp. KPP212	Krab	0.06 ± 0.02	0.06 ± 0.01	0 ± 0	0 ± 0	0 ± 0
<i>Bacillus</i> sp. IP121	Fish	0.02 ± 0.01	0.03 ± 0.01	0 ± 0	0 ± 0	0 ± 0
<i>Bacillus</i> sp. UJ131	Shrimp	0.05 ± 0.01	0.07 ± 0.01	0 ± 0	0 ± 0	0 ± 0
<i>Bacillus</i> sp. UJ132	Shrimp	0.02 ± 0.01	0.03 ± 0.01	0.03 ± 0.01	0 ± 0	0 ± 0
<i>Bacillus</i> sp. SB141	Snail	0 ± 0	0 ± 0	0 ± 0	0 ± 0	0 ± 0

The production of protease and xylanase enzyme used bacteria i.e. *Bacillus* sp. KPP212, *Bacillus* sp. IP121, *Bacillus* sp. UJ131 and *Bacillus* sp. UJ132 showed different result (Table 2 and Table 4). While, the

cellulase enzyme was produced by *Bacillus* sp. UJ132 (Table 3). Based on data activity of protease enzyme has the highest activity from *Bacillus* sp. UJ131 of 0.06 U ml<sup>-1</sup> at all production medium (Table 2).

**Table 2: The production of protease enzyme from *Bacillus* with various substrates.**

Bacteria	Origin of isolates	Activity of protease (U ml <sup>-1</sup> )		
		skim milk medium	Shrimp feed medium	Fish feed medium
<i>Bacillus</i> sp. KPP212	Krab	0.05 ± 0.01	0.03 ± 0.01	0.06 ± 0.01
<i>Bacillus</i> sp. IP121	Fish	0.04 ± 0.01	0.02 ± 0.01	0.05 ± 0.02
<i>Bacillus</i> sp. UJ131	Shrimp	0.07 ± 0.06	0.05 ± 0.01	0.08 ± 0.08
<i>Bacillus</i> sp. UJ132	Shrimp	0.05 ± 0.02	0.04 ± 0.02	0.06 ± 0.03

The assay of xylanase activity showed that the highest activity was produced from *Bacillus* sp. UJ131 namely 0.15 U ml<sup>-1</sup> (Table 3).

**Table 3: The production of xylanase enzyme from *Bacillus* with various substrates.**

Bacteria	Origin of isolates	Activity of Xylanase (U ml <sup>-1</sup> )		
		Xilan medium	Shrimp feed medium	Fish feed medium
<i>Bacillus</i> sp. KPP212	Krab	0.07 ± 0.02	0.08 ± 0.03	0.18 ± 0.03
<i>Bacillus</i> sp. IP121	Fish	0.02 ± 0.02	0.05 ± 0.05	0.09 ± 0.01
<i>Bacillus</i> sp. UJ131	Shrimp	0.15 ± 0.03	0.20 ± 0.04	0.31 ± 0.04
<i>Bacillus</i> sp. UJ132	Shrimp	0.10 ± 0.04	0.20 ± 0.04	0.23 ± 0.04

The assay of cellulase activity showed that only *Bacillus* sp. UJ132 produced cellulose. Fish feeds medium was

best substrate to cellulase production i.e. 0.15 U ml<sup>-1</sup> (Table 4).

**Table 4: The production of cellulase enzyme from *Bacillus* with various substrates.**

Bacteria	Origin of isolates	Activity of cellulase (U ml <sup>-1</sup> )		
		CMC medium	Shrimp feed medium	Fish feed medium
<i>Bacillus</i> sp. UJ132	Shrimp	0.06 ± 0.03	0.07 ± 0.07	0.15 ± 0.10

The results showed that the enzyme of protease and xylanase were produced by bacteria i.e. : *Bacillus* sp. KPP212, *Bacillus* sp. IP121, *Bacillus* sp. UJ131, and *Bacillus* sp.

UJ132. Whereas, cellulolytic only produced by *Bacillus* sp. UJ132.

It is signed by the appear of clear zones around the colonies of *Bacillus* . So, *Bacillus* sp. capable of hydrolyzing the substrate contained in the growing medium.

The xylan backbone was composed a xylose which it was bound by the β-1,4-glycosidic bond. The main

monomers in most xylan are D-xylose, D-mannose, D-galactose, and L-arabinose.<sup>[12]</sup>

When, the xylanolytic, cellulolytic, and mannanolytic assay are done, the red color is formed from the xylan substrate having the  $\beta$ -1,4 glycosidic bond attached to the congo red. Degradation of  $\beta$ -1,4 glycosidic bonds to form new molecules in the form of xylose, glucose, and mannose cause congo red no joined  $\beta$ -1,4 glycosidic. So, the media around of the colony of bacteria made clear zones.<sup>[13]</sup> On the other hand, a clear zone made on the SWC + skim milk medium occurs when the skim substrate contains a cloudy white casein protein. Casein protein is degraded by protease to peptides and amino acids. So, the media around the colony will develop clear zones.<sup>[14]</sup>

Based on the selective assay, there is one isolate from *Bacillus* sp. SB141 which showed no activity in all hydrolase enzymes. It is known that the bacteria do not produce amylase and mannanase enzymes. It does not show clear zones around the *Bacillus* sp. In the amilolytic assay,  $\alpha$ -1,4 glucosidic bonds of starch do not degrade into glucose, maltose and dextrin molecules. So, it was the blue colors when iodine is bound to amilum on the media and no clear zones are formed<sup>[15]</sup>. It based on data onto assay of selective and hydrolase enzyme activity, *Bacillus* sp. KPP212 can be used as probiotics to improve nutrient absorption of feed in aquaculture. This is similar with else research that the use of probiotics containing proteolytic bacteria producing protease enzymes can improve the normal microflora in the intestine. The bacteria can improve fish growth.<sup>[16]</sup>

The bacteria can improve fish growth. *Bacillus* sp. KPP212 can use to degrade pollution in pond bottom and mangrove. *Bacillus* sp. UJ132 producing cellulase helps to degrade fiber of feed of the nutrients. The cellulase capable of hydrolyzing cellulose into glucose that it can be well absorbed by host cell also.<sup>[17]</sup> The use of *Bacillus* sp. KPP212 and *Bacillus* sp. UJ132 can increase productivity of the host animal by optimizing of nutrition absorption and increasing their metabolism.

#### IV. CONCLUSION

The research is known that from 5 isolates of *Bacillus* sp. there are 4 *Bacillus* that produced protease and xylanase enzyme i.e. *Bacillus* sp. KPP212, *Bacillus* sp. IP121, *Bacillus* sp. UJ131, and *Bacillus* sp. UJ132. *Bacillus* sp. UJ131 has the highest protease and xylanase activity. *Bacillus* sp. UJ132 produces three enzymes: protease, cellulases and xylanases enzymes. The fish feed substrate is best substrate to produce many hydrolase enzyme.

#### V. REFERENCE

1. Verschuere, L., Rombaut G, Sorgeloos P, & Verstraete W. Probiotic Bacteria as Biological Control Agents in Aquaculture. *American Society*

- for Microbiology. *Microbiol.Mol.Biol.Rev.* 2000; 64(4): 665.
2. almin G, Kathiresan K, & Purushothama A. Effect of Probiotics on Bacterial Population and Health Status of Shrimp in Culture Pond Ecosystem. *Indian J Exp Biol.* 2001; 39: 939-942.
3. Al-Tamimi A H, Al-Zereini WA, & Tarawneh KA. *Bacillus* sp 1A1 as a Producer of Antibacterial Extract: Taxonomy, Cultivation, and Partial Purification. *Curr. Res. Bacteriol.* 2015; 8(1): 18-25.
4. Stetterson, J. A & Burkholder K.M. Application Of Prebiotics and Probiotics in Polutry Production. *Journal of Polutry Science*, 2003; 82(2): 627-631.
5. Shakibazadeh S., Roos S C, Hafezieh M., Christianus A., Kamarudin M. S, and Kamaruzaman S. A putative Probiotic Isolated from Hatchery Reared Juvenile *Penaeus monodon*. *Iranian Journal of Fisheries Sciences*, 2012; 11(4): 849-866.
6. Poedjiadi, A., & Supriyanti, F.M.T. Dasar-Dasar Biokimia. *Penerbit Universitas Indonesia*. Jakarta, 2009.
7. Sumardi, Agustrina R, Ekowati C N, & Pasaribu Y S. Characterization of protease from *Bacillus* sp. on medium containing FeCl<sub>3</sub> exposed to magnetic field 0.2 mt. *IOP Conference Series: Earth and Environmental Science*, 130. 012046 doi:10.1088/1755-1315/130/1/012046, 2018.
8. Pratiwi, W. A & Subagiyo. Isolasi dan Seleksi Bakteri Penghasil Enzim Ekstraseluler (Proteolitik, Amilolitik, Lipolitik dan Selulolitik) yang Berasal dari Sedimen Kawasan Mangrove. *Ilmu Kelautan*, 2012; 17(3): 164-168.
9. Ekowati C N, Sumardi, & Pratiwi I. Potensi Amilolitik Isolat Bakteri dari Saluran Pencernaan Ayam Kampung. *Prosiding Seminar Nasional Sains MIPA dan Aplikasinya*. ISSN 2086-2342, 2009; 18-518.
10. Benson. Microbiological Applications Laboratory Manual In General Microbiology. *The McGraw-Hill Companies*, 2001; 162-168.
11. Sumardi, Agustrina R, Irwan B, & Pratiwi A. The Effect of Magnetic Field Exposure on Medium to Protease Production by *Bacillus* sp. *Biovalentia Biological Research Journal*, 2018; 4(2): 1-5.
12. Singh Q.K., Kapoor M, Mahajan L, & Hoondal G S. Microbial xylanases and their industrial applications; a review. *J. Appl. Microbiol. Biotechnol.* 2001; 56: 326-338.
13. Sumardi. 2007. Isolasi Dan Karakterisasi Manananase Ekstraseluler Dari *Fusarium sporium*. *J. Sains MIPA*, 2009; 13(1): 43-48.
14. Pakpahan R. Isolasi Bakteri dan Uji Aktivitas Protease Termofilik dari Sumber Air Panas Sipoholon Tapanuli Utara Sumatera Utara. *Sekolah Pascasarjana Universitas Sumatera Utara Medan*. [Tesis], 2009.
15. Heko, T., Ohno, T., A. & Ohisa, A. Purification and Characterization of a Thermostable Raw Starch Digesting Amylase from a *Streptomyces* sp.

- Isolated In a Milling Factory. *Biosci. Biotechnol. Biochem*, 2005; 69(6): 1073-1081.
16. 13. Janarni, Widagdo P., & Wahjuningrum D. Aplikasi Probiotik, Prebiotik dan Sinbiotik Melalui Pakan pada Udang Vannamei (*Litopennaeus vannamei*) yang Diinfeksi Bakteri *Vibrio harveyi*. *Jurnal Akuakultur Indonesia*, 2012; 11(1): 54-36.
  17. 3. ropah , D. A., Jannah A., & Maunatin A. Kinetika Reaksi Enzimatis Ekstrak Kasar Enzim Selulase Bakteri Selulolitik Hasil Isolasi dari Bekatul. *Alchemy*, 2012; 2(1): 34-45.

# THE ACTIVITY ASSAY OF PROTEASE, CELLULASE, AMYLASE, XYLANASE AND MANNANASE FROM BACILLUS SP. AS A CANDIDATE OF PROBIOTICS

ORIGINALITY REPORT

21%

SIMILARITY INDEX

## PRIMARY SOURCES

1	<a href="http://ijpab.com">ijpab.com</a> Internet	102 words — 3%
2	<a href="http://ementoring.suttontrust.com">ementoring.suttontrust.com</a> Internet	70 words — 2%
3	<a href="http://digilib.unila.ac.id">digilib.unila.ac.id</a> Internet	57 words — 2%
4	<a href="http://repository.lppm.unila.ac.id">repository.lppm.unila.ac.id</a> Internet	52 words — 2%
5	Sumardi Sumardi, Salman Farisi, Christina Nugroho Ekowati, Achmad Arifiyanto, Dwi Eka Rahmawati. "Halotolerant Bacillus sp. for Mannan Degradation Isolated from Mangrove Ecosystem at Hanura Beach Lampung", Journal of Pure and Applied Microbiology, 2020 Crossref	42 words — 1%
6	<a href="http://repositorio.ufpe.br">repositorio.ufpe.br</a> Internet	29 words — 1%
7	Sumardi, Rochmah Agustrina, Christina Nugroho Ekowati, Yovita Selvie Pasaribu. " Characterization of protease from sp. on medium containing FeCl exposed to magnetic field 0.2 mt ", IOP Conference Series: Earth and Environmental Science, 2018 Crossref	29 words — 1%
8	<a href="http://xwb.sdpec.edu.cn">xwb.sdpec.edu.cn</a>	



24 words — 1 %

9 [www.tandfonline.com](http://www.tandfonline.com)  
Internet

23 words — 1 %

10 [www.thaiscience.info](http://www.thaiscience.info)  
Internet

22 words — 1 %

11 [ejournal.unib.ac.id](http://ejournal.unib.ac.id)  
Internet

22 words — 1 %

12 [doaj.org](http://doaj.org)  
Internet

20 words — 1 %

13 [jurnalmahasiswa.unesa.ac.id](http://jurnalmahasiswa.unesa.ac.id)  
Internet

18 words — 1 %

14 Modzelewska-Banachiewicz, B.. "Synthesis and mycological activity of the compounds obtained in the reaction of N<sup>3</sup>-substituted amidrazones with sulphonyl-bis-2,4-dihydroxybenzenethioly", European Journal of Medicinal Chemistry, 200101  
Crossref

18 words — 1 %

15 [ejournal.undip.ac.id](http://ejournal.undip.ac.id)  
Internet

17 words — 1 %

16 Chandler Allen Phillips. "Functional Electrical Rehabilitation", Springer Science and Business Media LLC, 1991  
Crossref

15 words — &lt; 1 %

17 Ayat H. Al- Tarawni, Wael A. Al- Zereini, Khaled A. Tarawneh. "Bacillus sp. 1A1 as a Producer of Antibacterial Crude Extract: Taxonomy, Cultivation and Partial Purification", Current Research in Bacteriology, 2015  
Crossref

14 words — &lt; 1 %

18	<a href="http://www.bashanfoundation.org">www.bashanfoundation.org</a> Internet	13 words — < 1%
19	<a href="http://journal.ipb.ac.id">journal.ipb.ac.id</a> Internet	13 words — < 1%
20	Suddin Simandjuntak, Mokosuli Samuel. "Isolation and Identification of Thermophilic Bacteria, Producer of Amylase Enzyme, from Lake Linow, North Sulawesi", <i>Journal of Pure and Applied Microbiology</i> , 2018 Crossref	12 words — < 1%
21	<a href="http://krishikosh.egranth.ac.in">krishikosh.egranth.ac.in</a> Internet	11 words — < 1%
22	<a href="http://fmipa-biologi.unila.ac.id">fmipa-biologi.unila.ac.id</a> Internet	9 words — < 1%
23	M Amin, M F Yusuf, E Suarsini, F A Anugrah, E W Alita, I Rachman, T Matsumoto. "Identification of indigene bacteria from waste water of Regional Public Hospitals in Pacitan", <i>IOP Conference Series: Earth and Environmental Science</i> , 2019 Crossref	8 words — < 1%
24	<a href="http://docplayer.info">docplayer.info</a> Internet	8 words — < 1%
25	<a href="http://jifro.ir">jifro.ir</a> Internet	8 words — < 1%
26	Irma Melati, Mulyasari Mulyasari, Mas Tri Djoko Sunarno, Maria Bintang, Titin Kurniasih. "PRODUKSI ENZIM SELULASE DARI BAKTERI TS2b YANG DIISOLASI DARI RUMPUT LAUT DAN PEMANFAATANNYA DALAM MENGHIDROLISIS KULIT UBI KAYU DAN DAUN UBI KAYU SEBAGAI BAHAN BAKU PAKAN IKAN Irma", <i>Jurnal Riset Akuakultur</i> , 2014 Crossref	8 words — < 1%
27	Fatma Karray, Manel Ben Abdallah, Najwa Kallel, Manel Hamza,	

Manel Fakhfakh, Sami Sayadi. "Extracellular hydrolytic enzymes produced by halophilic bacteria and archaea isolated from hypersaline lake", Molecular Biology Reports, 2018

Crossref

8 words — < 1%

28 repository.unair.ac.id

Internet

7 words — < 1%

29 Nikoskelainen, S.. "Immune enhancement in rainbow trout (Oncorhynchus mykiss) by potential probiotic bacteria (Lactobacillus rhamnosus)", Fish and Shellfish Immunology, 200311

Crossref

6 words — < 1%

EXCLUDE QUOTES

ON

EXCLUDE MATCHES

OFF

EXCLUDE  
BIBLIOGRAPHY

ON