

Effect of Pressure and Heat Treatments on the Compressive Strength of Reactive Powder Concrete

by Masdar Helmi

Submission date: 01-Jan-2020 07:42AM (UTC+0800)

Submission ID: 1238892862

File name: Helmi_et_al_2018.pdf (777.06K)

Word count: 4632

Character count: 23138

1 Effect of Pressure and Heat Treatments on the Compressive Strength of Reactive Powder Concrete

Masdar Helmi^{1,*}, Matthew R Hall^{2,3}, and Sean P Rigby⁴

¹Department of Civil Engineering, Faculty of Engineering, University of Lampung, Jalan S. Brojonegoro No. 1 Bandar Lampung, Indonesia 35145

²GeoEnergy Research Centre, Faculty of Engineering, University of Nottingham, University Park, Nottingham NG7 2RD, UK

³British Geological Survey, Environmental Science Centre, Keyworth, Nottingham NG12 5GG, UK

⁴Division of Manufacturing and Process Technologies, Faculty of Engineering, University of Nottingham, University Park, Nottingham NG7 2RD, UK

Abstract. This paper presents the corresponding compressive strength of RPC with variable pressure combined with heating rate, heating duration, and starting time of heating. The treatments applied were 8 MPa static pressure on fresh RPC prisms and heat curing at 240 °C in an oven. The compressive strength test was conducted at 7-d and 28-d. The images of RPC morphology were captured on the surface of a fractured specimen using Scanning Electron Microscopy in Secondary Electron detector mode to describe pore filling mechanism after treatments. The results show that a heating rate at 50 °C/hr resulted in the highest compressive strength about 40 % more than those at 10 or 100 °C/hr. A heating duration of 48 hours led to the maximum compressive strength. Heat curing applied 2 days after casting resulted in the maximum compressive. Heat curing had a significant effect on the compressive strength due to the acceleration of both reactions (hydration and pozzolanic) and the degree of transformation from tobermorite to xonotlite. It is concluded that the optimum condition of treatments is both pressure and heat curing at 2-day after casting with a rate of 50 °C/hr for 48 hours.

1 Introduction

Reactive powder concrete (RPC), categorized as a type of ultra-high performance concrete (UHPC) due to having compressive strength > 140 MPa, has a different composition to ordinary concrete. RPC has no coarse aggregate and contains a higher proportion of fine particles (<600 µm) comprising silica fume, quartz sand and other admixtures. RPC can be developed by controlling three main variables: composition, pressure during setting period, and post-set heat curing [1].

Firstly, composition can be improved through a microstructural engineering approach by using fine aggregate only (no coarse aggregate), reducing water-binder ratio, lowering the CaO-SiO₂ ratio through the introducing of silica-rich pozzolona [2, 3] and adding fibre reinforcement to increase ductility [4]. Secondly, pressure applied during the setting period also influences the strength of concrete. Pressure induces three main effects: reducing the entrapped air, removing the excess water, and eliminating the porosity caused by chemical shrinkage [1]. Meanwhile, heat curing induces the acceleration of the pozzolanic reaction between amorphous silica and calcium hydroxide as well as the silicate and aluminate hydration reaction, and also the modification of hydrate microstructure [5, 6].

An RPC mixture typically contains a high amount of cement at a dosage of 800-1000 kg/m³. The use of cement in a high amount impacts on the heat of hydration and

1
leads to potential risks associated with shrinkage and creep-induced strain problems, and also the production cost. To solve the cost problems, Yazici *et al.*, [7] conducted research on the composition of RPC mixtures to find the optimal amount of finer materials from industrial waste (SF, PFA, and GGBS) as cement replacement. They suggested that RPC comprising 35wt% SF and up to 40 % GGBS (as cement replacement) could result in a compressive strength of more than 200 MPa. However, the presence of mineral admixtures can slow down the hydration reaction, lower the heat of hydration, and decrease shrinkage. This is often a difficult problem to overcome in mixtures with high cement content and low water/cement ratios [8].

Most scholars have argued that the strength of RPC is mainly developed by the pozzolanic reaction and hydrate transformation after heat curing. Heat curing, which is one of the most important treatments in RPC, can be applied by various methods. Yazici *et al* [7] applied heat curing on RPC prism specimens (after demoulding) in an autoclave at 2.0 MPa and 210 °C. These conditions were achieved within a 2.5 h heating period, and the heat curing was then applied for 8 hours. Cwirzen [6] used a method of steam curing (95 %RH, 90 °C) to optimise the conditions for heat curing by varying two factors: the starting time of heating after demoulding, and the duration of heating. Heat curing was applied to the RPC cube specimens with durations of 24, 48 and 168 hours, and starting times at 1, 2, and 4 days after casting the samples.

* Corresponding author: masdar.helmi@eng.unila.ac.id

1

He suggests that the optimal conditions of heating can be reached after 2 days of casting with a total duration of 48 hours producing the highest degree of hydration. Another heat curing method was applied by Sadrekarimi [9] and Tam *et al.* [10] in drying oven equipment with different rates and maximum temperatures. Sadrekarimi [9] placed samples in the oven with a constant heat rate of 10 °C/hr until it reached a temperature of 240 °C. Tam *et al.* [10] set first a drying oven at 100 °C then placed samples into the oven with a temperature rate of 50 °C/hr until it reached 250 °C. It should be noted that the duration and heating rate are important factors in heat curing since they affect the crystallisation of hydrates, pozzolanic reaction, microstructure development and associated bulk mechanical properties [11].

Heat curing treatment, which is generally applied after final set of cement at a temperature between 90 °C and 250 °C, contributes to both the progression of cement hydration and the acceleration of the pozzolanic reaction between silica fume (amorphous) and quartz flour (crystalline) [12,5,6,11]. Heat curing also modifies the micro structure of hydrates by changing the C-S-H chain length from trimer to pentamer [6]. When the temperature of curing increases to more than 200 °C, this condition leads to the transformation of crystalline hydrates and dehydration of the hardened paste. The transformation hydrate will be formed spontaneously when water extracted from hydrates is trapped in the centre of samples during transient heating [12] becoming tobermorite at a temperature of 150 °C and xonotlite at temperatures of both 200 and 250 °C [11].

It is clearly understood that the treatments of pressure and heat curing affect the strength of RPC which depend on three factors; the method of application, the temperature and duration of treatments [13]. Cwirzen [6] and Tam & Tam [11] have studied the effect of treatments on RPC containing high cement content with those variables. They used the composition of RPC with high cement content and not yet in low cement content due to using industrial waste as cement replacement. Therefore it is necessary to evaluate the optimisation of treatments on RPC mixtures.

2 Experimental method

2.1. Materials

The main binder was CEM1 52.5 cement (Rugby, Cemex UK), in accordance with BS EN 197-1:2011. The silica fume was used along with microsilica grade 940-D (Elkem, Switzerland) and Ground Granulated Blastfurnace Slag (GGBS) (Hanson, UK) was used as a partial cement replacement. Quartz sand (David Ball Ltd. UK) was used where, $G = 2.65$ and water absorption = 1.5 %, with gradation conforming to BS 1881-131. This study used three grades of sand: A (2.36 mm - 1.18 mm), C (0.60 mm - 0.30 mm) and E (0.15 mm - 0.09 mm). These grades were mixed in a ratio of 2A:1C:1E (by mass) to produce a suitable particle size distribution as suggested by Yazici *et al.* [7].

2.2 Sample fabrication

The composition used industrial waste due to the fact that this technique can reduce the use of cement by up to 40 %, while giving compressive strength of more than 200 MPa [7]. A trial mix was done in order to get enough workability of fresh RPC mixture. Table 1 presents the result of the final composition.

The mixing of RPC containing very fine materials and low water-cement ratio is different from a conventional concrete mixing process. The process of mixing in this study was adopted from [8]. Initially, dry materials, including binder and quartz sand, were put in a stainless mixer bowl, mixed at a speed of ~120 rpm for 2 minutes and then followed by mixing with a speed of up to ~450 rpm for another 2 minutes. The half volume of water and SP premixed were then added and mixed for about 5 minutes until the mixture had a consistent appearance. After the mixture became consistent, it was cast into oiled steel moulding which contained three prisms with dimension of 40 x 40 x 160 mm.

Table 1. Composition of RPC per cubic meter

PC (kg)	SF (kg)	GGBS (kg)	Quartz (kg)			Water (kg)	SP (litre)
			A	C	E		
498	208	332	488	244	244	200	55

2.3 Sample treatments

2.3.1 Pressure treatment

Pressure treatment was used to compact RPC samples in the setting period. Static pressure was applied on the top of fresh mixtures using a compressive machine for about 5 hours after casting. The load was increased and controlled by a computer at a rate 1 kN/s to reach at 150 kN, which resulted in a stress of 8 MPa for each sample. The compressive machine was held in this load position for about 2 minutes in order to tighten four corner bolts in the moulding. Using this method will allow the load to continue pressing the samples during the setting period [13]. Releasing the pressure and demoulding the samples was done after 48 hours of casting in order to let the mixture harden properly and not stick to the moulding [10]. Figure 1 presents the illustration of the mould and the samples.

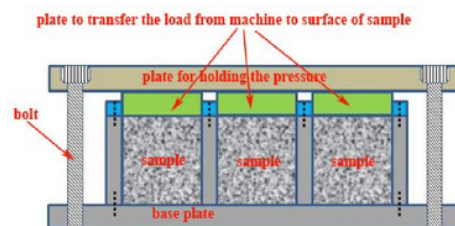


Fig. 1. Cross section of mould with pressure.

2.3.2 Heat curing treatment

Heating the sample in the setting period is a unique treatment for RPC, which is different from treatments in common concrete [13]. The heat curing process in this study uses a drying oven similar to an experiment by [10]. The samples are put on a rack and preheated at 40 °C for 2 hours, and then increased to 240 °C. The rate, durations, and starting time of heating were used as variables in the preliminary study to get the optimum condition which were indicated by compressive strength. There were three different levels in every set; rates were 10, 50, and 100 °C/hour; durations were 12, 24, and 48 hours; and starting times were 1, 2, and 3 days. After heat curing finished, the temperatures of the oven was decreased at 2 °C/min rate to 40 °C, then samples were cooled at room temperature. The samples were then submerged in water at a temperature of 10 °C until the day of testing, either 7-d or 28-d.

2.4 Method of testing

2.4.1 Compressive strength

The compressive strength test was conducted at 7-d or 28-d using one part of the two broken pieces of prism conforming to BS EN 196-1:2011. The contact pressed area of the sample was 40 x 40 mm and the height was 40 mm. The samples were tested at 7-d and 28-d under compressive machine with a maximum capacity of 500 KN and load rate of 2400 N/s. This test results in the maximum load, which was then used to calculate compressive strength by dividing it by the surface of the contact area. The average of compressive strength is taken from three samples.

2.4.2 Paste morphology

Samples for SEM tests were made from fractured bulk specimens of RPC cubes. Three representative sub-samples were mounted fracture face down and cold mounted under vacuum in 2-part epoxy resin. Mounted samples were ground using SiC paper (400, 600, 800 and 1200 grit) on 20cm diameter wheels at a rotational speed of 250 rpm, followed by polishing using 6µm then 1µm diamond pastes. Polished samples were washed using acetone and dried under a hot air blower, followed by sputter coating with ~15nm thick carbon using an Edwards 306 vacuum Coater, as shown in Figure 2.

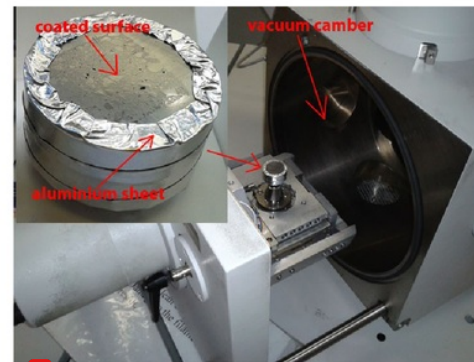


Fig. 2. Placing the mounted and coated sample in vacuum chamber.

3 Result and Discussion

3.1 Compressive strength due to heating rate

The heating rate has a correlation with the speed of evaporation, this in turn influences the extent of air voids and hydration reaction in the concrete (Sadrekarimi, 2004). A low heating rate may decrease the dehydration rate by allowing sufficient time for thermal diffusion to occur, which influences the final compressive strength of the concrete. Therefore three different rates, namely 10, 50 and 100 °C/hr were evaluated in this study. Samples were tested in compression at 7-d and 28-d using two parts of a broken prism. The result is shown in Figure 3.

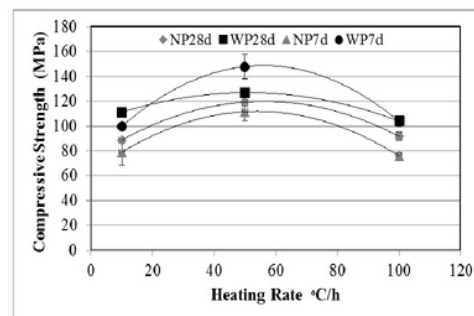


Fig. 3. Compressive strength-heating rate curves for a heating duration of 48 hours after 2 days of casting.

The compressive strength, at 7-d and a heating rate of 10 °C/hr, is 79 MPa for a non-pressured (NP) sample and 100 MPa with pressure (WP) [14]. This is stronger than the qualification of high strength concrete performance (HSCP) according to Neville [15]. At 28-d, the compressive strength continuously increases up to 89 MPa for NP and 111 MPa for WP. When the heating rate is increased to 50 °C/hr, the compressive strength at 7-d

increases by 41 % (NP) and by 48 % (WP) compared to the numbers achieved for the 10 °C/hr samples.

At 28-d, however, compressive strength remains relatively stable for NP and drops about 14 % for WP compared to the same samples is at 7-d. It is supposed that the hydration and pozzolanic reactions have been accelerated with the application of heat but that micro cracks are also produced. Increasing the heat application level to 100 °C/hr has less effect on compressive strength compared to using 10 °C/hr. Compressive strength changes at this heat rate, either at 7-d or 28-d for both NP and WP, are within the calculated range of error for the measured results and can be ignored.

The lack of change in compressive strength with high temperature could mean that the high rate heating induces immediate evaporation of water from the C-S-H gel and causes a rapid increase in the pressure of pores which in turn increases the tensile stress in the cement paste. If this tensile stress is higher than the tensile capacity of RPC at 2-d (the point at which pressure is applied) microcracks are induced around the pores. Microcracks, which have been formed during the setting period due to natural shrinkage and grain movement after pressure application, could increase in number and width after heat curing. Consequently, the reason for achieving lower compressive strength in samples with heating rates of 10 and 100 °C/hr could be less effective hydration and pozzolanic reactions and the development of microcracks respectively [1].

3.2 Compressive strength due to heating duration

For this experiment, samples were heated to a maximum temperature of 240 °C with a ramp rate of 50 °C/hr in a drying oven. The maximum temperature was applied for durations of 12, 24 and 48 h. The measured compressive strengths in the samples at 7-d and 28-d are presented in Figure 4.

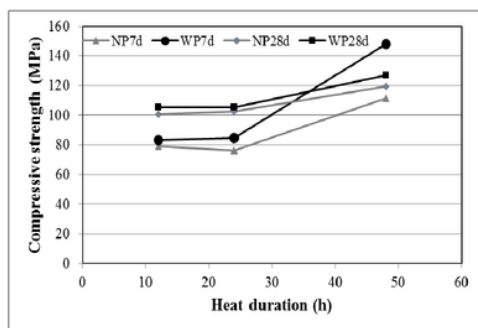


Fig. 4. Compressive strength-heating duration curves for a heat rate of 50 °C/hr after 2 days of casting.

As can be seen in Figure 4, the curve shows that there is no optimum compressive strength from the three variations of heat duration tested. However, the compressive strength tends to increase with an increase of

duration for all samples. At 7-d, the compressive strength increases progressively and not linearly with heating duration. It is found that the compressive strength of samples with heating duration of 12, 24 and 48 h are 79.02, 76.34, 111.60 MPa for NP and 83.20, 84.62, 147.94 MPa for WP, respectively. The difference is less significant at 12 h compared to 24 h and becomes very significant to 48 h as there is increase of around 45 % (NP) and 75 % (WP). For the 28 day samples the trend is more gradual with the difference in compressive strength of both types of sample at around 20 %.

This result shows that the duration of heating is an important factor which affects the compressive strength of RPC and the properties of the microstructure [6]. The effect shows correlation with the acceleration of the rate of cement hydration and pozzolanic reactions for both silica fume and quartz sand. In addition, the duration of heat condition results in an increase in the strength of the RPC due to the amount of C-S-H produced and the change in crystal formation from tobermorite to xonotlite [11].

3.3 Compressive strength due to heating start time

For this experiment, three samples were heated under identical temperature conditions of 240 °C at a ramp rate of 50 °C/hr in a drying oven. The time of sample placement in the oven after casting was varied between samples with delays of 1, 2, and 3 days. The comparison of compressive strengths for the three different delay times at 7-d and 28-d is presented in Figure 5.

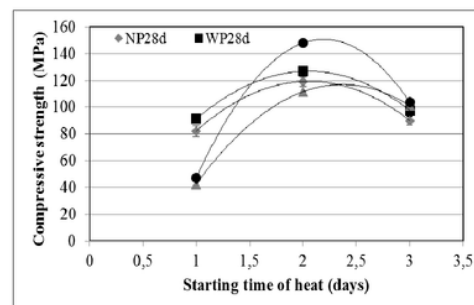


Fig. 5. Compressive strength-heated starting time curve for heating rate of 50 °C/hr and duration of 48 h.

Figure 5 shows that the optimum compressive strength is found when the heat condition is applied after a delay of 2 days from casting, both at 7-d and 28-d, for both NP and WP samples. Although the rate of strength development in concrete under normal curing conditions is influenced by the rate of hydration after one or two days [14], it will still increase gradually with time [16]. The results from applying heat curing in RPC samples at 3 days show disagreement with this theory, with a contradictory result of a 45 % reduction in compressive strength compared to the one with applied heat curing after 2 days. In any condition, the compressive strength of WP samples was always higher than NP samples for all conditions because

1 pressure condition changes the physical microstructure of the mixture before final setting was achieved by a densification mechanism [1].

The reason for optimum compressive strength being achieved by heating at 2 days may be explained by hydration theory [16]. On the first day of hardening, tobermorite [C-S-H] gel was formed in much higher quantities than ettringite and portlandite [$\text{Ca}(\text{OH})_2$] and starts to form C_4AF hydrate. During the second day, the volume of hydrated phases increased and the volume of ettringite decreased as it converted to monosulphate, and on the third day the density of hydrate phases began to increase significantly. Moreover the majority of ettringite converted to monosulphate prior to the onset of the hydrate phase densification at 2 days. Given that the **1**ove was a valid description. This suggests that the highest compressive strength, while heat curing was applied at 2 days, could be due to acceleration of hydrate phase densification whilst the risk of microcracks initiation/ enlargement resulting from thermal expansion of partially-hardened hydrate phases was avoided.

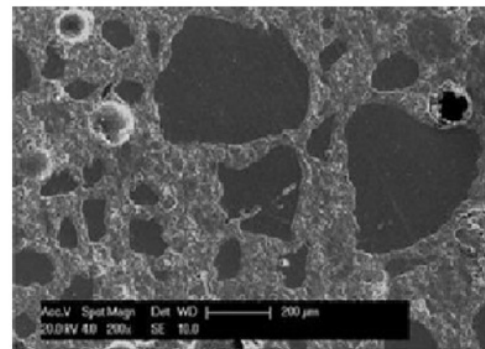
1 3.4 Morphology of cement paste

It is well known that pressure setting applied to fresh RPC mixtures can increase their density due to the reduction of entrapped air pores, both in terms of diameter and number, and the associated removal of free water content. On the other hand, the use of high cement content and low water-cement ratio results in a mixture of anhydrous and hydrated material. In addition, applying high temperature curing affects not only the prevention of the hydration process of cement grains but also induces microcracks in the hardened paste due to evaporation and the transformation of CSH gel [10].

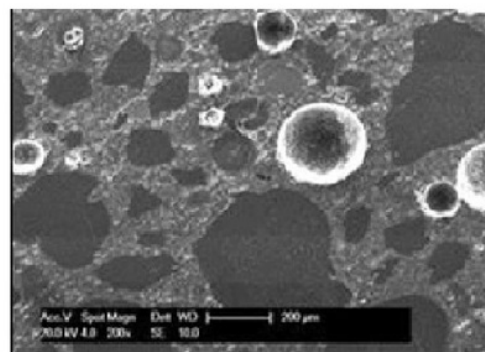
1 3.4.1 Entrapped air pores

In general RPC has a denser matrix phase and is more homogeneous than normal concrete. However it still contains entrapped air pores with a wide range of diameters between 10 and 300 μm , which are formed by using high amounts of superplasticizer in the RPC mixture [8]. Entrapped air pores are generally spherical and much larger than any other type of pore.

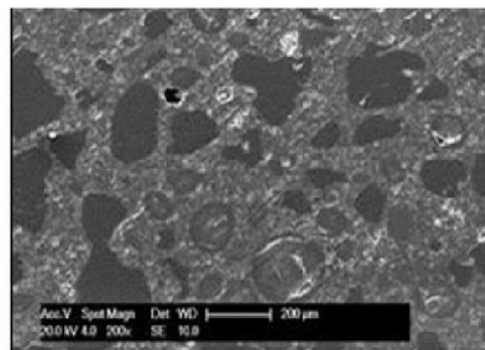
In SEM images of cementitious materials, several kinds (and length scales) of pores can be observed as shown in Figure 6 - 9. Polished cross-section RPC specimens were prepared and imaged, and analysed using the secondary electron (SE) detector at 10 mm working distance.



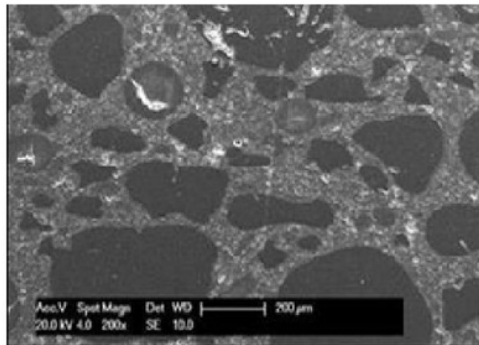
1 Fig. 6. Entrapped air on samples following no treatment.



1 Fig. 7. Entrapped air on samples following heat curing.



1 Fig. 8. Entrapped air on samples following pressure.



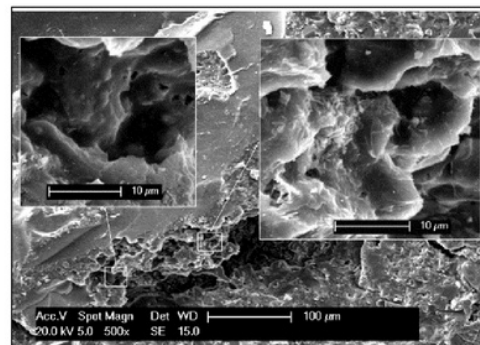
1 Fig. 9. Entrapped air on samples following pressure and heat curing.

1 Figure 6 and 7 show that RPC without pressure treatment had some entrapped air pores with a maximum diameter of about 200 μm. When pressure was applied to fresh mixtures, the number and diameter of large entrapped air pores were reduced by around one order of magnitude (Fig 8 and 9). In addition, the matrix of specimens appeared denser than those without pressure. It is suggested here that some of pores have been closed altogether with spill out of free water, whilst others were changed physically becoming smaller in diameter and greater in number. This finding supports most scholars' statements that applied pressure on fresh mixtures can reduce the pore volume and mean diameter, and consequently increase matrix density [1,8].

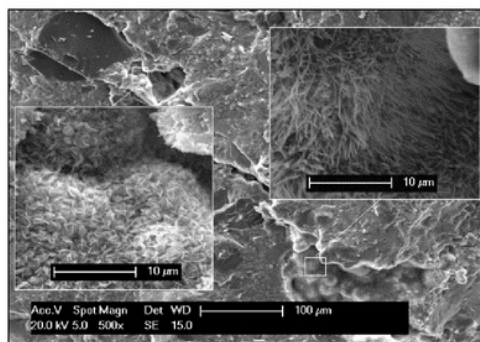
3.4.2 Pore filling after heat curing

Most scholars agree that heat curing induces a pore filling mechanism caused by the formation of pozzolan-derived C-S-H phases, the rate of formation for which is exothermically driven [1,6,11]. At a temperature of 90 °C it can accelerate the hydration reaction, and therefore transform both the microstructure and microchemistry of RPC [6]. Tam & Tam [11] found that tobermorite was characterised by plate-like crystals formed at a temperature of around 150 °C, whilst xonotlite was observed as needle-shaped crystals that occur at temperatures above 200 °C. At higher temperatures, between 200 and 250 °C, the chain length of C-S-H can be modified from trimer to pentamer or hexamer, with some dehydroxilation of cement gel due to both acceleration of hydration and the pozzolanic reaction [5,12]. The pore filling mechanism of RPC in this study is shown in Figure 10 - 11.

Figure 10 presents the pore inside appeared nearly clear with an irregular coarse surface, and small pores with a diameter of about 1 μm. The small platy-shaped hydrate, possibly found in RPC at ambient temperature curing, was identifiable as C-S-H [8]. The structure of this C-S-H typically was like a rigid gel which was amorphous or with poorly crystalline structure [10].



1 Fig. 10. Morphology on pore without heat curing. Insert: group of ettringite crystal located in pores.



1 Fig. 11. Morphology on pore with heat curing. Insert: groups of tobermorite (platy-shape) and xonotlite (needle-shape) filled in pores. Heat curing induces pore filling mechanism.

Figure 11 shows some pores of specimens after heat curing, and they were filled by some platy-shaped and needle-shaped crystals. The platy-shaped crystals were identified **1** as tobermorite ($\text{Ca}_{4+x}(\text{H}_2-2x\text{Si}_6\text{O}_{17}.5\text{H}_2\text{O})$ or $(\text{C}_5\text{S}_6\text{H}_5)$ which has properties such as: a hardness of 2.5 on the Mohs scale, relatively stable with a CaO/SiO_2 molar ratio of 0.83. The needle-shaped crystals **1** are called xonotlite ($\text{Ca}_6(\text{Si}_6\text{O}_{17})(\text{OH})_2$ or $\text{C}_6\text{S}_6\text{H}_2$), with properties similar to those of tobermorite but having a CaO/SiO_2 molar ratio of 1.0 [11].

This observation finds agreement with those of previous scholars [8,11], where high temperature curing could transform C-S-H to tobermorite or xonotlite and fill the pores inside the specimen [17]. The mechanism of the transformation was that heat treatment extracted water from the hydrates, which is then trapped inside the pores. It was firstly transformed to tobermorite, then secondly into xonotlite as a final structure [10,12]. This transformation mainly depended on both the temperature level and the duration of heating [10].

1

4 Conclusion

This study has verified the properties of RPC mixtures with reduced cement 379 content (due to replacement by GGBS). The effects of pressure and high 380 temperature curing treatment on compressive strength and paste morphology 381 have also been investigated in three ways, i.e. heating rate, heating duration and 382 heating start time. The conclusion of this study are as follows:

1. A heating rate at 50 °C/hr results in the highest compressive strength about 40 % more than these at 10 or 100 °C/hr due to the proportional effect on the pozzolanic reaction rate and the volume of microcracks formed in the paste.
2. A heating duration of 48 hours led to a maximum compressive strength (compared to the samples at 12 and 24 hours) due to the acceleration of both reactions; hydration and pozzolanic.
3. Heat curing applied at 2 days after casting resulted in the maximum compressive strength due to heat-induced acceleration of hydrate phase densification whilst avoiding the risk of microcrack initiation/enlargement resulting from thermal expansion of partially-hardened hydrate phases.
4. High temperature curing could transform C-S-H to tobermorite or xonotlite and fill the pores inside the specimen due to the extraction of water from the hydrates, which is then trapped inside the pores.
5. The optimum condition of heat curing is starting at 2-day after casting with a rate of 50 °C/hr for 48 hours due to the increase of pozzolonic and hydration reaction rates and the amount of crystal transformation.

1

References

1. P. Richard, M. Cheyrezy, *Cem. and Conc. Res.* **25** (1995).
2. O. Bonneau, C. Vernet, M. Moranville, P.C. Aïtcin, *Cem. and Conc. Res.* **30** 12 (2000).
3. V. Matte, M. Moranville, *Cem. and Conc. Comp.* **21** 1 (1999).
4. Y. W. Chan, S. H. Chu, *Cem. and Conc. Res.* **34** 7 (2004).
5. H. Zanni, M. Cheyrezy, V. Maret, S'Philippot, P. Nieto, *Cem. and Conc. Res.* **26** 1 (1996).
6. A. Cwirzen, *Adv. in Cem. Res.* **19** 1 (2007).
7. H. Yazıcı, H. Yiğiter, A.S. Karabulut, B. Baradan, B., *Fuel*, **87** 12 (2008).
8. H. Yazıcı, M. Y. Yardımcı, S. Aydın, A.S. Karabulut, *Cons. and Buil. Mat.* **23** 3 (2009).
9. A. Sadrekarimi, *Jou. of Adv. Conc. Tech.* **2** (2004).
10. C. M. Tam, V.W.Y. Tam, K.M. Nga, *Mag. of Con. Res.* **62** 10 (2010).
11. C. M. Tam, V.W.Y. Tam, *Mag. of Con. Res.* **64** 3 (2012).

1

12. M. Cheyrezy, V. Maret, L. Frouin, *Cem. and Conc. Res.* **25** 7 (1995).
13. M. Helmi, (Thesis, University of Nottingham, (2016)
14. M. Helmi, M.R. Hall, S.P. Rigby, *33rd Cement and Concrete Science Conference*, pp 288-333 (2013).
15. A. M. Neville, *Properties of Concrete*, (Atlantic Publications Inc, 2011)
16. P. L. Domone, *Concrete*, (E & FN Spon, 1996).
17. M. Helmi, M.R Hall, L. A. Stevens, S.P. Rigby, *Cons. and Buil. Mat. J.* **105** 15 (2016).

Acknowledgements

3

The authors wish to acknowledge the support of the Directorate General of Higher Education (DIKTI) in Indonesia for the research scholarship enabling this work, which was conducted as part of a larger project.

Effect of Pressure and Heat Treatments on the Compressive Strength of Reactive Powder Concrete

ORIGINALITY REPORT

99%

SIMILARITY INDEX

99%

INTERNET SOURCES

99%

PUBLICATIONS

11%

STUDENT PAPERS

PRIMARY SOURCES

1

www.matec-conferences.org

Internet Source

96%

2

Submitted to School of Business and Management ITB

Student Paper

2%

3

Masdar Helmi, Matthew R. Hall, Lee A. Stevens, Sean P. Rigby. "Effects of high-pressure/temperature curing on reactive powder concrete microstructure formation", Construction and Building Materials, 2016

Publication

1%

Exclude quotes Off

Exclude bibliography Off

Exclude matches Off