

Accepted Manuscript

Thermal - Catalytic Cracking of Real MSW into Bio Crude Oil

Indra Mamad Gandidi, M. Dyan Susila, Ali Mustofa, Nugroho Agung Pambudi



PII: S1743-9671(16)30574-8

DOI: [10.1016/j.joei.2016.11.005](https://doi.org/10.1016/j.joei.2016.11.005)

Reference: JOEI 284

To appear in: *Journal of the Energy Institute*

Received Date: 27 September 2016

Revised Date: 10 November 2016

Accepted Date: 14 November 2016

Please cite this article as: I.M. Gandidi, M.D. Susila, A. Mustofa, N.A. Pambudi, Thermal - Catalytic Cracking of Real MSW into Bio Crude Oil, *Journal of the Energy Institute* (2016), doi: 10.1016/j.joei.2016.11.005.

This is a PDF file of an unedited manuscript that has been accepted for publication. As a service to our customers we are providing this early version of the manuscript. The manuscript will undergo copyediting, typesetting, and review of the resulting proof before it is published in its final form. Please note that during the production process errors may be discovered which could affect the content, and all legal disclaimers that apply to the journal pertain.

Thermal - Catalytic Cracking of Real MSW into Bio Crude Oil

Indra Mamad Gandidi¹, M. Dyan Susila¹, Ali Mustofa¹, Nugroho Agung Pambudi^{2,3}

¹ Department of Mechanical Engineering, Faculty of Engineering, Lampung University, Jl. S. Brojonegoro No. 1, Bandarlampung, Indonesia

² Mechanical Engineering Education, Universitas Negeri Sebelas Maret, Jl. Ir. Sutami 36 A Surakarta 57126, Indonesia

³ International Institute for Carbon-Neutral Reserch (WPI-I2CNER), Kyushu University, 744 Motooka, Nishi-ku, Fukuoka 819-0395, Japan

Corresponding Author: indra.mamad@eng.unila.ac.id

Abstract—The thermal decomposition method has been able to convert of real Municipal Solid Waste (MSW) into bio-crude oil (BCO) which is mainly contained hydrocarbon fuel such as light oil (gasoline) and heavy oil (diesel). By this method, sustainable MSW management and energy problem can be considered. Hence, this research was conducted the pyrolysis experimental to BCO production from the real MSW under thermal and catalytic pyrolysis at 400 oC and 60 minutes for time reaction. To increase the BCO yield in this study, the natural activated zeolite as a catalyst was employed. BCO was analyzed by Gas chromatography–mass spectrometry (GC-MS) which it can be used to identify carbon number range by percentage of peak areas. It was found that the catalytic pyrolysis has performances better than the thermal pyrolysis. Both of thermal and catalytic pyrolysis were the produce of BCO around 15.2 wt% and 21.4 wt% respectively with the main organic components are gasoline and diesel. Furthermore, paraffin and olefin fraction are major species in the gasoline and diesel. It can be concluded that the content of MSW and their processes has an impact on the fuel produced. In the thermal cracking produce BCO with higher content in the gasoline range. More plastic in MSW is also produce more gasoline while more biomass produces more in diesel range.

Keywords: Pyrolysis; Bio Crude Oil (BCO); Municipal Solid Waste (MSW), Thermal cracking; Catalytic cracking

1. Introduction

Cities around the world are producing more and more municipal solid waste (MSW) due to economic growth, increasing human populations, the rise of consumerist lifestyles and continued urbanization. Many developing countries, including Indonesia, manage MSW through an open dumping system in which the MSW is disposed of in a way that leaves it exposed to the elements [1], posing health and environmental risks. Piles of trash in open landfills provide a habitat for bacteria and insects as well as pollution surrounding air, land and water [2]. The costs of transportation, maintenance and labor for improved MSW management are very high and population growth has reduced the availability of landfill space in cities. However, as a material MSW stores energy in the form of chemical bonds between molecules of carbon, hydrogen and oxygen [3]. When these chemical bonds are destroyed, the organic material reacts and converts into gas, liquids or solids that are commonly called bio-fuel [4]. The calorific value that can be generated from most MSW is around 20.57/kg [5]. Thus, MSW is a raw material with considerable potential to be converted into bio-energy. Several methods for bio-energy production from MSW have been proposed, one of which is the pyrolysis method.

The pyrolysis method is a thermal degradation in which MSW is converted into solids, liquids and gasses at an elevated temperature without the presence of oxygen [6]. Usually, the temperature ranges from 400-600°C. This process is intended to break down long hydrocarbon chains into short-chain hydrocarbons. MSW appears eligible as a raw material for bio crude oil (BCO) production through pyrolysis [7-10]. However, the pyrolysis process has low efficiency regarding the endothermic reaction at high temperatures. Fortunately, the addition of a catalyst in the process can overcome these problems, as the presence of the

39 catalyst reduces the activation energy and improves the decomposition reaction and product yield. Chika M,
40 et al. [11] carried out pyrolysis using Y-zeolit and ZSM-5 as catalysts to convert electric and electronic
41 plastic waste into BCO; Aida, et al. [12] used fluidized catalytic cracking (FCC) to convert plastic waste;
42 Norbert M, et al. [13] performed catalytic pyrolysis with Y-Zeolite, FCC, MoO₃ and HZSM-5 to convert
43 MSW and Municipal Plastic Waste (MPW); JL Wang, et al. [14] studied the effect of a Si/Al ratio on the
44 BCO yield; Funda A, et al. [15] studied efficiency of several catalysts (Y-zeolite, β -zeolite, equilibrium
45 FCC, MoO₃, Ni–Mo-catalyst, HZSM-5) on the catalytic cracking of MSW and MPW. However, all of the
46 researchers above have used synthetic or commercial catalysts in the pyrolysis process, which increase the
47 costs of production, and these catalysts have a faster deactivation time because of MSW impurities and
48 contaminants.

49
50 One of the best solutions to reduce these costs is to use natural catalysts that are abundant in the
51 environment. A number of researchers have investigated thermal catalytic degradation using natural
52 catalysts. Wenger Jorn. [16] performed catalytic pyrolysis to produce BCO from mixed plastic waste using
53 clay as catalyst; Kyaw K T, et al. [17] carried out a pyrolysis experiment to make a comparison between
54 clay and dolomite as catalysts; Panda KA, et al. [18] used kaolin in the polypropylene pyrolysis and
55 Mochamad S, et al. [19] carried out two stage pyrolysis of HDPE and PP as raw material with natural
56 zeolite to produce BCO.

57
58 Nevertheless, most of the papers cited above performed single-component pyrolysis or used MSW that
59 was specified such as pure and mixed plastic material for BCO production. Meanwhile, the MSW in
60 developing countries generally includes a huge variety of mixed waste and it is impossible to collected
61 different kinds separately because of the large quantities produced. Also, more information about the BCO
62 characteristics of real MSW (unseparated) in pyrolysis is necessary before it can be used as an engine fuel.
63 Moreover, so far zeolite has not been used as catalyst in the real MSW pyrolysis process.

64
65 Therefore, this research was focused on BCO production from real MSW by the pyrolysis method, in
66 which it is a mixture of some kinds of biomass waste, several plastics waste, textile waste, papers waste and
67 rubber waste. The pyrolysis experiment was performed under catalytic pyrolysis. Pyrolysis BCO further
68 was analyzed to study the characteristics such as product composition and yield, as well as chemical and
69 physical properties. Afterward, a comparison between the results of pyrolysis and conventional oil (diesel-
70 48 and gasoline-88) was performed to examine the possibility of using MSW as a substitute for
71 conventional fuels.

72 73 **2. Material and Methods**

74 **2.1. Waste and catalyst for pyrolysis**

75 The 25 kg of real MSW sample that used in this experiment was collected from a final disposal site in
76 Bakung district, Bandarlampung, Indonesia. This sample consisted of various kinds of waste, including
77 vegetable waste from the traditional market, garden and household wastes, LDPE, HDPE, paper/cardboard,
78 PS, rubber waste and textile waste. The real MSW sample was then dried by the sun for around 3-5 days.
79 After drying process, the MSW sample separated to account for its composition before it was chopped into
80 smaller pieces around 5-10 cm to provide the appropriate size for reactor capacity. The composition (dry
81 basis) and physical form of the MSW is shown in Fig. 1. Just over half of the MSW consisted of plastic
82 waste such as bottles and plastic bags. Another third was made up of biomass, including vegetable, garden
83 and kitchen waste. Almost a tenth consisted of discarded paper, newspapers and cardboard, 3% was rubber
84 waste, and 2% of the MSW came from textiles.

85
86
87

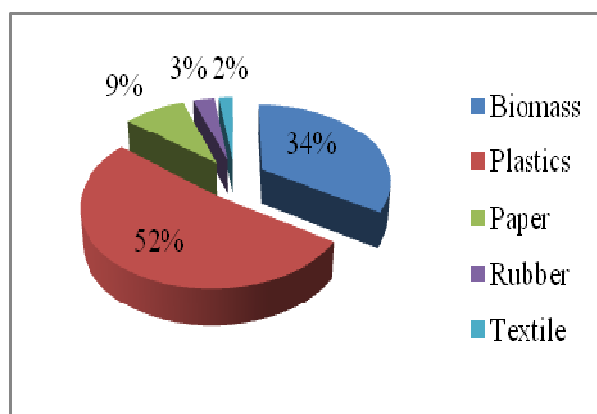


Figure 1. The composition and physical of MSW used in this experiment

The natural zeolite used in this study was a material from a local source in Lampung province that donated by CV. Mina Tama, Bandar Lampung, Indonesia as a trader of natural zeolite. Based on their data, the natural catalyst is the clinoptilolite type crystalline matter and the chemical composition of natural zeolite are majority consisted of silicon dioxide or silica (68.5%). It also contained 13.17% aluminum oxide, 2.98% ferric oxide, 2.15% magnesium oxide, 2.47% calcium oxide (quicklime), 1.8% potassium oxide, 1.06% sodium oxide, 0.14% titanium dioxide, and the remaining others (Table 1). To examine the structure of natural zeolite activated, the XRD analysis was employed and the XRD patterns of the activated natural zeolite is shown Fig. 2. It can be seen that the activated zeolite has a good crystallinity behavior (characteristic peaks sharply). That is indicated stable at high temperatures and appears likely to produce a strong effect in the decomposition of real MSW.

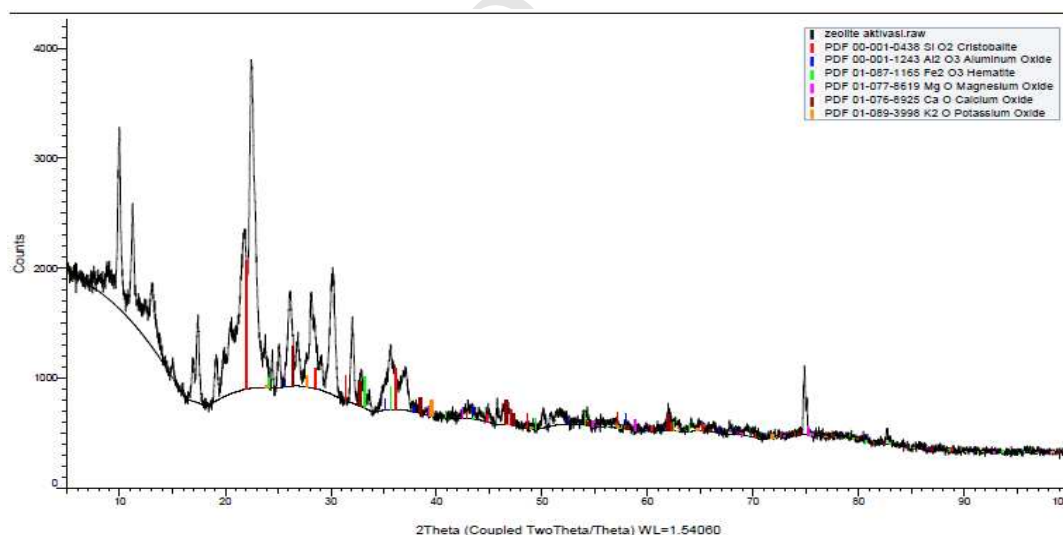


Figure 2. X-Ray patterns of the activated zeolite

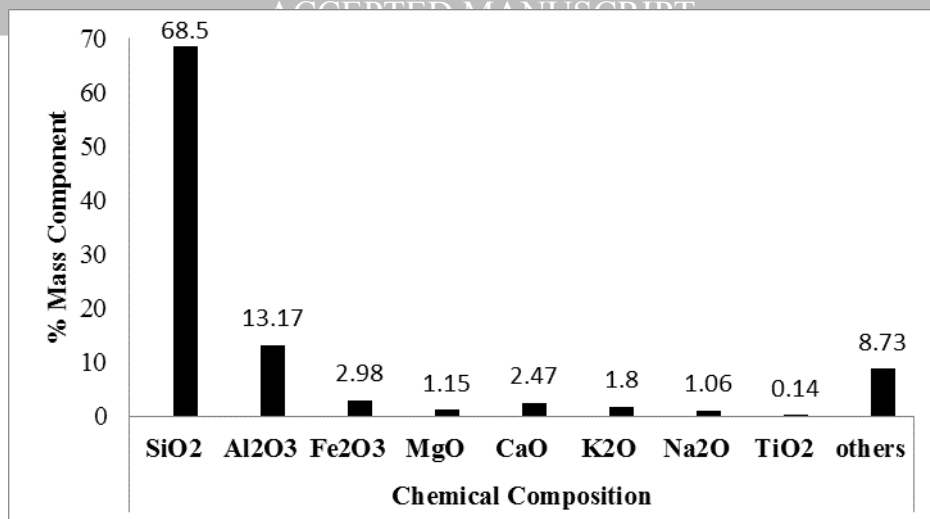


Figure 3. Chemical composition of activated zeolite (Source: CV. Mina Tama, Bandarlampung, Indonesia)

2.2. Pyrolysis Experiment

The real MSW sample was pyrolysed in a laboratory scale using fixed bed vacuum reactor (pyrolyser) as shown in Fig. 4. It equipped with secondary reactor as a hopper which is placed at the top of the pyrolyser. It was then connected by a tunnel that equipped by air lock valve. The pyrolyser was made from the stainless cylinder with the dimensions of 310 mm in height, 160 mm in diameter, and the electrical heating jacket was taped around it, whereas the hopper was made from the cast iron cylinder with the dimensions of 250 and 160 mm in height and diameter respectively. The pyrolyser and hopper were set vertically.

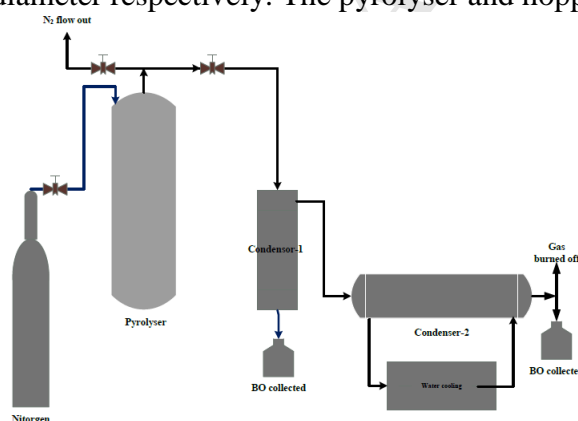


Figure 4. The installation of experiment apparatus

In this experiment, firstly the MSW sample (similar with the real MSW composition) was placed into the hopper, while the pyrolyser was heated at a rate of 12 °C until its temperature reached the set value of 400 °C. Afterward, from the top of pyrolyser, N₂ gas was introduced for 3 minutes, and then flowed out again through the top of the pyrolyser. A flow of nitrogen will push down and replaced the air from the pyrolyser and permitted the pyrolysis reaction under inert vacuum conditions. Then, samples of MSW were fed into the pyrolyser by opened up the air lock valve: 500 g of real MSW sample for non-catalytic pyrolysis and 750 g of mixed catalyst-MSW. The ratio of catalyst to MWS was 250:500 g. For both pyrolysis experiments, the reaction time was held for 60 minutes.

The gas produced during pyrolysis flowed out from the top of the reactor and into a vacuum gas cleaner, which served as a first condenser. Next, the gas went into the shell and tube condensers, which served as secondary condensers to separate liquid from the gas. The temperature of the gas in the shell and tube condensers was maintained at 20°C by water pump circulation. The condensation product from the vacuum

gas cleaner and the condensers was made up of a mixture of water and bio-oil, which were separated by a series of precipitation and filtration processes. The clean BCO was then weighed. The gaseous products were burned off to prevent the emission of hydrocarbon gasses. The char produced by heating MSW in the reactor remained at the reactor bottom and was collected and removed after the pyrolysis reaction was completed. Finally, four replicates were performed for both of pyrolysis experiment.

2.3. BCO Analysis

The products obtained from the pyrolysis can be divided into non-condensable gas, solid and liquid (BCO) fractions. From the BCO yield, hydrocarbon chains in the gasoline range (C_5 - C_{12}), diesel (C_{12} - C_{20}) and heavy oils ($> C_{20}$) that consist of paraffin, olefins, naphthenes and aromatics [20] can be recovered. In order to examine the BCO, the pyrolysis liquid was analyzed using a gas chromatography mass spectrometry (GC-MS, QP2010S Shimadzu) which can identify carbon number range and chemical composition by percentage of peak areas. The column was a DB-1 (Agilent J 100% dimethyl polysiloxane) capillary column, 30 mm length with 0.25 mm diameter and 25 μ m film thickness. Helium was used as the gas carrier. The temperature was initially set at 60°C for 5 min, followed by a heating rate of 5 °C/min to 280 °C, where it was held for 51 min. The heating value was estimated using the carbon-hydrogen weigh ratio [21], according to which the paraffin has highest heating value, followed by iso-paraffin, olefin, nepthenes and aromatic (PIONA).

3. Results and Discussion

a. Physical Properties

The physical properties of BCO and conventional oil, including viscosity, density and content, were analyzed based on ASTM methods. The results are shown in Table 1. It can be seen that BCO has physical properties close to those of diesel-48 oil, although solid and water content was high in the BCO due to impurities in the unwashed real MSW and direct catalyst. In BCO derived from both thermal and catalytic cracking, the presence of activated zeolite in the pyrolysis process was adequate to improve the density and viscosity properties.

Table 1. Properties of BCO

Propertis	Units	Diesel 48	Gasoline 88	Thermal Cracking	Catalytic Cracking
Cetane Octane Number		48 (cetane)	88 (octane)	-	-
Density@15°C	g/cm ³ ASTM D-1298	0,815-0,87	0,7-0,78	0.8133	0.8076
Kinematic Viscosity@40°C	cSt ASTM D-445	2,0-5,0	0,4-0,8	2.662	2.4775
Flash Point	°C ASTM D-93	min 60	min 40	min 5	min 5
Water Content	% Vol ASTM D-1744	max 0,05	-	1.5	2.5
Oil Content	% Vol ASTM D-1744	-	-	95	90
Solid Content	% Vol ASTM D-482	-	-	3.5	7.5

b. Chemical Properties

The output of GCMS analysis is a GC graph and MS tabulation. The entire of peak on GC graph was represent the amount of hydrocarbon chain in the BCO and MS tabulation was used to calculate the percent peak area of each chemical composition peak by Wiley's Library assist. The chromatogram results for thermal and catalytic cracking analyzed by GCMS are shown in Fig. 5a and Fig. 4b. A real difference can be

seen on the peaks of both chromatograms as a representation of chemical composition such as carbon distribution and mass species content in the pyrolytic BCO.

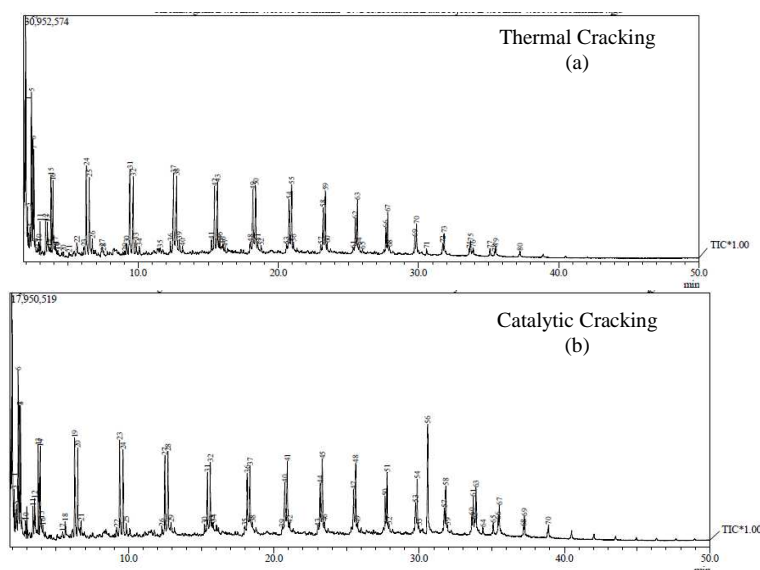


Fig 5. Chromatogram of the BCO mass fraction

The product from the real MSW in pyrolysis is shown in Fig. 6. Thermal cracking produced 15.2 wt% BCO and catalytic cracking produced 21.4 wt% BCO. The presence of activated zeolite in the pyrolysis process evidently improved the secondary cracking into small hydrocarbon chains, and this obtained a remarkable increase of BCO yield by around 40.79% compared without catalyst. This means that zeolite has an excellent productivity behavior as a catalyst in the pyrolysis process.

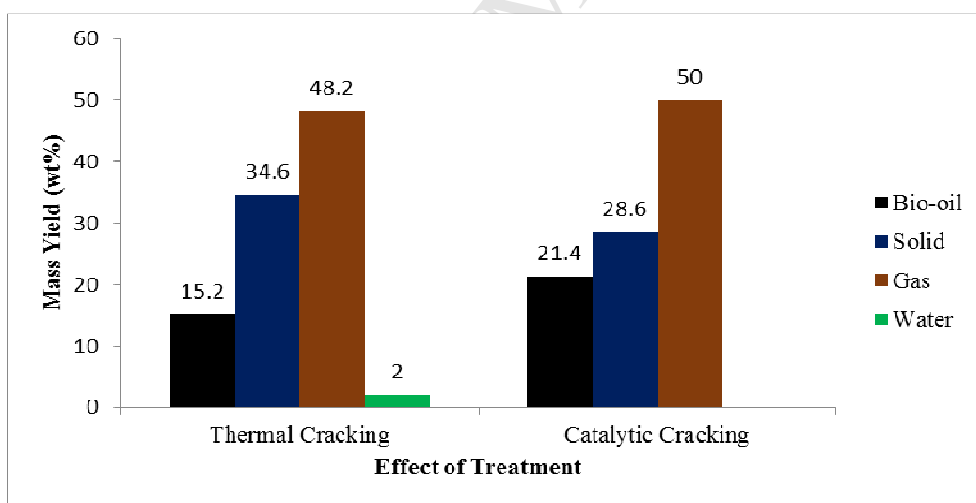


Fig 6. Mass yield of pyrolysis products

This behavior can be explained due to its active sites and acidity, which facilitate the cracking reaction in pyrolysis. However, the higher yield of gaseous product and appearance of water content in the BCO imply that the real MSW required further drying, and the temperature of the condensation environment, around 20 °C, was unfavorable. Moreover, the low BCO yield can also be associated with the short reaction time and long residence time of gas in the reactor [22] and also caused by biomass material presence that tends to produce of gaseous product [19], or plastic waste will lead to increase the yield of pyrolytic BCO [23].

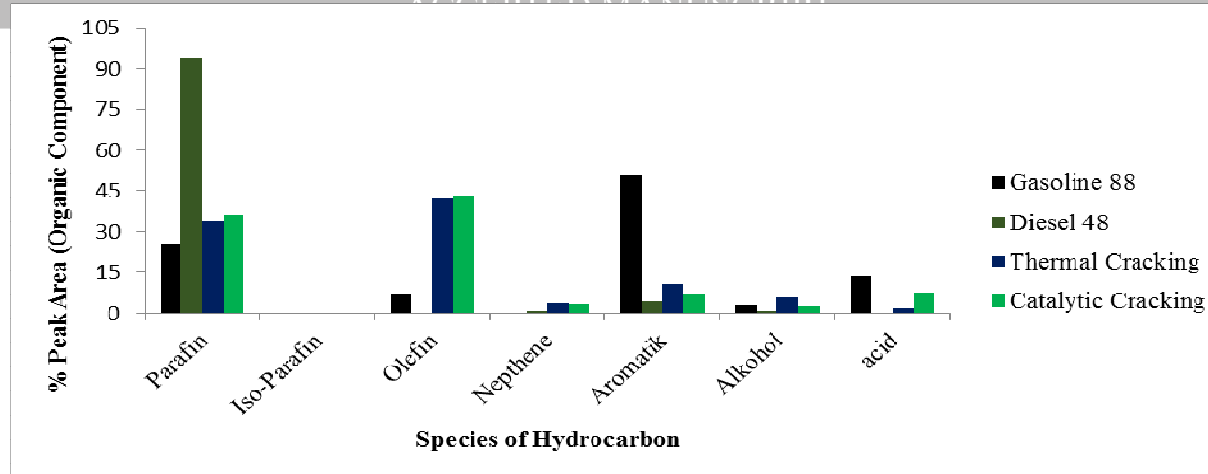


Figure 7. Carbon distribution range on conventional and pyrolysis fuel

The influence of activated zeolite on the carbon range and mass species in BCO is shown in Fig. 7 and Fig. 8. Meanwhile, PIONA percentage results in each hydrocarbon range are presented in Fig. 8. The PIONA results can represent the high heating value in the bio-crude oil during pyrolysis.

Fig. 7. shows that the BCO produced from the pyrolysis of real MSW contains mostly gasoline (C_5-C_{12}) and then diesel ($C_{13}-C_{20}$) and heavy oil ($C>20$). The high amount of plastic waste in the real MSW played important role in producing the high value of gasoline range in the BCO due to the chemical composition of plastic [24]. Regarding the short reaction time and long residence time of gas in the reactor (during slow pyrolysis), the presence of biomass in the real MSW will tended to produce of gaseous gas. Thermal cracking produced a gasoline product higher than the catalytic cracking process. This could be described as a result of secondary cracking on turning the small amount of gasoline into syngas, diesel into gasoline and solids into diesel due to the presence of a catalyst.

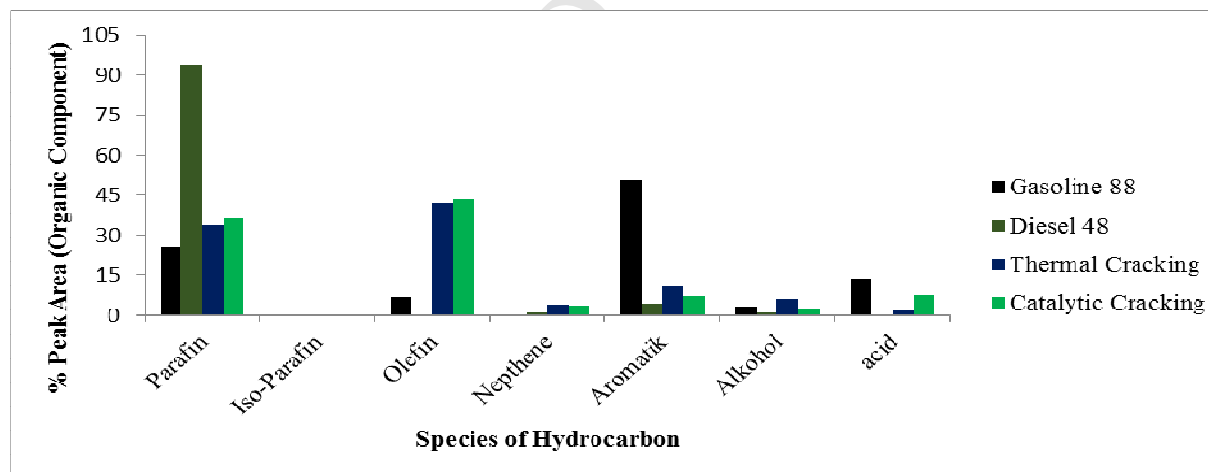


Figure 8. A comparison of mass species between BCO and conventional fuel

Moreover, based on chemical compounds in the pyrolytic BCO, paraffin, olefin, and aromatics are dominant element in BCO followed by small amount of alcohol and acids. There is only a slight difference between the amount of paraffin and olefin produced in thermal and catalytic cracking. This illustrates that the zeolite at $400\text{ }^{\circ}\text{C}$ over 60 minutes (with the slow pyrolysis condition) has low selectivity properties.

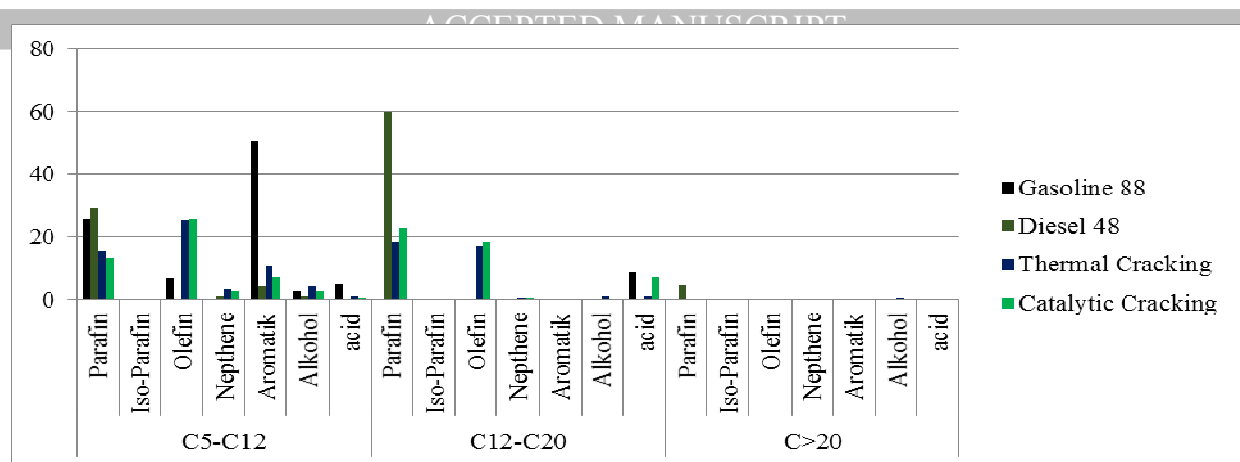


Figure 9. Number of mass species in each hydrocarbon range

Fig. 9. describes the PIONA contents in the each hydrocarbon range within the pyrolysis BCO. It shows that the gasoline fraction contained more olefin than paraffin and otherwise with the diesel fraction for both results of BCO from pyrolysis. This composition was significantly affected by kind of real MSW used in the process, especially the amount of plastics and biomass which strongly determined the kinds of chemical reactions during the pyrolysis process. The presence of impurities in the real MSW also appeared to play an important role impacting the BCO composition [25].

4. Conclusion

Real MSW has great potential as a raw material to be converted into the hydrocarbon range, including paraffin and olefin using pyrolysis method. In this paper, we employ the catalytic and thermal pyrolysis method. The novelty of this paper is the MSW used that in unseparated condition since most of this waste in developing countries generally includes a huge variety of mixed waste and it is impossible to collect different kinds separately because of the large quantities produced. Natural Activated Zeolite was used as a catalyst to improve the production of bio-oil. In the experimental preparation, well-dried MSW is prepared to prevent a high water product in the yield. BCO furthermore analyzed by Gas chromatography–mass spectrometry (GC-MS) which it can be used to identify carbon number range by percentage of peak areas.

It was found that the catalytic pyrolysis has performances better than the thermal pyrolysis. Both of thermal and catalytic pyrolysis were the produce of BCO around 15.2 wt% and 21.4 wt% respectively with the main organic components are gasoline and diesel. Furthermore, paraffin and olefin fraction are major species in the gasoline and diesel. The content of MSW and their processes also has an impact on the fuel produced. The process of thermal cracking produces BCO with higher content in the gasoline range. In the content of MWS, more plastic content produce more gasoline range. However more biomass content produces more in diesel range. In the reaction time, the short reaction may reduce BCO yield and may increase the proportion of oil in the diesel range. In our future research, the influence of reaction time, the temperature, water content and the particle size of the catalyst will be investigated.

References

- [1] Arinal H, et al, "Integrated system for Municipal Solid Waste Management in Bandarlampung City as an environmental conservation and energy production", Final report of strategic research grant, University of Lampung, 2010
- [2] Alexandra L C, "Municipal Solid Waste: turning a problem into resource - Waste: the challenges facing developing countries" Urban Specialist, World Bank, P. 2-4, 2012
- [3] Ebru A., et al, "Energy Content Estimation of Municipal Solid Waste by Multiple Regression Analysis", 5th International Advanced Technologies Symposium, Karabuk, Turkey, 2009

- 269 [14] Mc Kendry P, "Energy production from biomass (part 1): overview of biomass", *Bioresource*
270 *Technology*, V. 83, P. 37–46, 2002
- 271 [5] Ari D P., et al, "Feasibility study of MSW power plant in Bandung", Final Report, Research Institution
272 on ITB, 2007
- 273 [6] Hossain, A.K., et al, "Pyrolysis liquids and gases as alternative fuels in internal combustion engines: A
274 review", *Renewable and Sustainable Energy Reviews*, V. 21, P. 165–189, 2010
- 275 [7] Liu Y Q., et al, "Characterization of pyrolysis oil from municipal solid waste", CRETE; 3RD
276 International Conference on Industrial and Hazardous Waste Management, 2012
- 277 [8] Seung S K., et al, "Non-isothermal pyrolysis of the mixtures of waste automobile lubricating oil and
278 polystyrene in a stirred batch reactor", *Renewable Energy*, V. 54, P. 241-247, 2013
- 279 [9] Velghe I., et al, "Study of the pyrolysis of municipal solid waste for the production of valuable
280 products", *Journal of Analytical and Applied Pyrolysis*, V. 92, P. 366–375, 2011
- 281 [10] Ayhan D, "Pyrolysis of municipal plastic wastes for recovery of gasoline-range hydrocarbon", *J. Anal.*
282 *Appl. Pyrolysis*, V. 72, P. 97–102, 2004
- 283 [11] Chika M., et al, "Catalytic Pyrolysis of Waste Plastic from Electrical and Electronic Equipment",
284 Energy Research Institute, Faculty of Engineering, University of Leeds, Leeds, LS2 9JT, UK, 2015
- 285 [12] Aida Isma M. I., et al, "Mixed Plastic Wastes Pyrolysis in a Fluidized Bed Reactor for Potential Diesel
286 Production", *International Journal of Environmental Science and Development*, Vol. 6, No. 8, P. 606-
287 609, 2015
- 288 [13] Norbert M., et al, "Comparison of waste (MSW and MPW) pyrolysis in batch reactor over different
289 catalysts. Part II: Contaminants, char and pyrolysis oil properties", *Bioresource Technology*, V. 144, P.
290 370–379, 2013
- 291 [14] Wang J., et al, "Catalytic Pyrolysis of Municipal Plastic Waste to Fuel with Nickel-loaded Silica-
292 alumina Catalysts", *Energy Sources, Part A: Recovery, Utilization, and Environmental Effects*, V.
293 33(21), P. 1940-1948, 2011
- 294 [15] Funda A., et al, "Comparision of waste (MSW and MPW) pyrolysis in batch reactor over different
295 catalysts. Part I: Product yields, gas and pyrolysis oil properties", *Bioresource Technology*, V. 133, P.
296 443–454, 2013
- 297 [16] Wenger Jorn, "Catalytic Pyrolysis of Waste Plastics, *Journal of Materials Science and Engineering*", V.
298 5 (3-4), P. 183-185, 2015
- 299 [17] Kyaw, K T., et al, "Effect of various catalysits on fuel oil pyrolysis process of mixed plastic wastes",
300 *International Journal of Advances in Engineering & Technology*, 2015
- 301 [18] Panda, AK, "Thermo-catalytic degradation of low density polyethylene to liquid fuel over kaolin
302 catalyst", *Int. J. Environment and Waste Management*, 2014
- 303 [19] Mochamad S., et al, "Fuel Oil Production from Municipal Plastic Wastes in Sequential Pyrolysis and
304 Catalytic Reforming Reactors", *Energy Procedia*, V. 47, P. 180 – 188, 2014
- 305 [20] J. Aguado., et al, "Feedstock recycling of polyethylene in a two-step thermo-catalytic reaction system",
306 *J. Anal. Appl. Pyrolysis*, V. 79, P. 415-423, 2007
- 307 [21] Riazi M R, "Characterization and properties of petroleum", First edition, Kuwait University, 2005
- 308 [22] Ayhan D., et al, *Pyrolysis Mechanisms of Biomass Materials*, *Energy Sources, Part A*, V. 31, P. 1186–
309 119, 2009
- 310 [23] Dewangan A, et al, "Co-pyrolysis of sugarcane bagasse and low-density polyethylene: Influence of
311 plastic on pyrolysis product yield", *Fuel*, V. 185, P. 508–516, 2016
- 312 [24] Kyoseva V, Dombalov I, "Chemical Conversion of Municipal Solid Waste into Raw Materials and
313 Energy Resources", *Journal of Chemical Technology and Metallurgy*, V. 49, P. 179-184, 2014
- 314 [25] Borsodi N, et al, "Hydrocarbons obtained by pyrolysis of contaminated waste plastics", 45th
315 International Petroleum Conference, Bratislava, Slovak Republic, June 13, 2011

Highlights

- Cities around the world are producing a huge of municipal solid waste (MSW)
- We produce a Bio-Crude-Oil (BCO) from real MSW by the catalytic and thermal pyrolysis method
- Natural Activated Clinoptilolite-Zeolite was used as catalyst
- It was found that the catalytic pyrolysis has performances better than the thermal pyrolysis
- Thermal pyrolysis produced 15.2% BCO while catalytic produced 21.4% BCO

ACCEPTED MANUSCRIPT