



UNS



UTeM

ISSN : 2088-8864

Proceeding

2011

# International Conference and Exhibition Sustainable Energy and Advanced Material

SUSTAINABLE ENERGY  
SUPPORTED BY  
ADVANCED MATERIAL TECHNOLOGIES



INDONESIA  
**POWER**



Surakarta, October 3-4<sup>th</sup>, 2011  
Faculty of Engineering  
Universitas Sebelas Maret

# Organizing Committee

## Chairman

**Dr. techn. Suyitno**

Universitas Sebelas Maret, Indonesia

## Organizing Committee

**Dody Ariawan**

Universitas Sebelas Maret, Indonesia

**Didik Djoko S.**

Universitas Sebelas Maret, Indonesia

**Safarudin Ghazali Herawan**

Universiti Teknikal Malaysia Melaka,  
Malaysia

**Mohd. Azli bin Salim**

Universiti Teknikal Malaysia Melaka,  
Malaysia

**DR. Bagas Wardono**

Jubail University College, KSA

## Secretary

**Ubaidillah**

Universitas Sebelas Maret, Indonesia

**Wahyu Purwo Raharjo**

Universitas Sebelas Maret, Indonesia

## Thesaurus

**Wibawa Endra Juwana**

Universitas Sebelas Maret, Indonesia

**Dharmanto**

Universitas Sebelas Maret, Indonesia

## Advisory Board

**South East Asia Region**

**Prof. Dr. Kuncoro Dihadjo**

Universitas Sebelas Maret, Indonesia

**Prof. Dr. Neng Sri Suharty**

Universitas Sebelas Maret, Indonesia

**Prof. Dr.-Ing. Harwin Saptoadi**

Universitas Gajah Mada, Indonesia

**Prof. Dato' Dr. Ahmad Yusoff**

Universiti Teknikal Malaysia Melaka,  
Malaysia

**Prof. Dr. Md Razali bin Ayob**

Universiti Teknikal Malaysia Melaka,  
Malaysia

**Prof. Dr. Md. Radzai bin Said**

Universiti Teknikal Malaysia Melaka,  
Malaysia

**Prof. Madya Abd Salam bin Md.**

**Tahir**

Universiti Teknikal Malaysia Melaka,  
Malaysia

**Prof. Madya Juhari bin Ab Razak**

Universiti Teknikal Malaysia Melaka,  
Malaysia

**Prof. Madya Ahmad Rivai**

Universiti Teknikal Malaysia Melaka,  
Malaysia

**Prof. Madya Dr. Ir. Abd Talib bin**

**Din**

Universiti Teknikal Malaysia Melaka,  
Malaysia

**Dr. Khisbullah Hudha**

Universiti Teknikal Malaysia Melaka,  
Malaysia

**Dr. techn. Suyitno**

Universitas Sebelas Maret, Indonesia

**Ir. Ari Handono Ramelan, PhD.**

Universitas Sebelas Maret, Indonesia

**Dr. rer. nat. Atmanto Heru W.**

Universitas Sebelas Maret, Indonesia

**Dr. Eng. Agus Purwanto**

Universitas Sebelas Maret, Indonesia

**Dr. Mont. Mohammad Zaki**

**Mubarok**

Institut Teknologi Bandung, Indonesia

**Dr. Eng. Yuli Setyo Indartama**  
Institut Teknologi Bandung, Indonesia

**Dr. Ir. Rahman Setiawan**

Institut Teknologi Bandung, Indonesia

**Dr. Dipl. Ing. Berkah Fajar**

Universitas Diponegoro, Indonesia

**Dr. techn. Rahmi Andarini**

Institut Teknologi Sepuluh Nopember,  
Indonesia

## America Region

**Dr. techn. Zainal Abidin**

Southwest Research Institute, USA

## Europe Region

**Dr. techn. Peter Haselbacher**

TU Graz, Austria

## Middle East Region

**DR. Bagas Wardono**

Jubail University College, Kingdom of  
Saudi Arabia

## TABLE OF CONTENT

ADVISORY BOARD	i
TOPICS COVERAGE	ii
PREFACE	iii
TABLE OF CONTENT	iv
KEYNOTE PAPER	viii
<hr/>	
CFD Analysis of Bubble Distribution in Non-Catalytic Reactor for Production of Biodiesel Fuel	1
<i>Dyah Wulandani, Tomoki Miura, Armansyah H. Tambunan, Hiroshi Nabetani and Shoji Hagiwara</i>	
Real-time Electrical Power Monitoring Designed by Using Microcontroller ATmega-51	9
<i>Muhammad Nizam, Bambang Kusharjanta, Muh. Thoyib</i>	
Vertical Axis Marine Current Turbine Development in Indonesian Hydrodynamic Laboratory-Surabaya for Tidal Power Plant	15
<i>Erwandi, Afian K., P. Sasoko, Rina, B. Wijanarko, E. Marta, D. Rahuna</i>	
An Experimental Study of Leakage Rate through Rubber-Seal of LPG Bottle Valve Used in Household Gas Stove Burner	24
<i>I Made Kartika Dhiputra, Raka Cahya Pratama, I Nym Guni Ridhanta</i>	
Study Optimization of Jatropha Fruit Coat Hydrolysis Phase	32
<i>Praptiningsih, G. Adinurani, Tony Liwang, Salafudin, Leopold, O. Nelwan, Yosephianus Sakri Roy, Hendroko</i>	
Effect of Aluminum Surface Temperature Variations to Heat Transfer Characteristics in Salt Water Droplet Collision Dynamics	39
<i>Slamet Wahyudi, Putu Hadi Setyarini, Surya Cakrawijaya</i>	
Optimizing the Selection of Potential Species of Oil-Producing Microalgae to Support Economic Feasibility of Biodiesel Production	44
<i>Mujizat Kawaroe, Ayi Rachmat, and Abdul Days</i>	
Mitigation of Green House Gases Emission in Cassava Mill: Case Study in Lampung, Indonesia	54
<i>Udin Hasanudin, Agus Haryanto, Erdi Suroso</i>	
The Effect of Palm Oil Methyl Esters Blends on the Combustion and Emission of Direct Injection Diesel Engine	61
<i>Bagus Anang Nugroho, Bambang Sugiarto, and Prawoto</i>	
A Mathematical Model for Predicting the Performance of a Horizontal Axis River Current Turbine with Consideration of Blade Parameters	66
<i>Ridway Balaka, Aditya Rachman, Jenny Delly</i>	
Harvesting Energy from Flood Mitigation Ponds Using Water Wheel	74
<i>Abdul Talib Din, Mohd. Yazid Othman, Mohd. Yuhazri Yaakob</i>	
Passive Cooling System of a Building: A New Approach	88
<i>Md. Hasan Ali, Mohammad Mashud, Md. Mahasin Ali, H M Mehedi Rafique</i>	
Emission Testing of Diesel Engine Fueling with Oxidized Biodiesel	95
<i>Berkah Fajar T.K, Didik Ariwibowo</i>	
Using Infrared Radiation based Fuzzy Logic for Rice Grain Dryer Time Control	100
<i>Muhammad Nizam, Agus Mujianto, Bambang Kusharjanta, Tri Irianto</i>	
Usage Solar Thermal Technology of Hybrid Wood Drying on the Integrated System HP/T Collector to Supply Energy in Rural Furniture Industry	107
<i>Budi Kristiawan, Suyitno, Danang Apriyanto, A. Fahmy Rezayona</i>	

## Mitigation of Green House Gases Emission in Cassava Mill: Case Study in Lampung, Indonesia

Udin Hasanudin<sup>1)\*</sup>, Agus Haryanto<sup>2)</sup>, Erdi Suroso<sup>1)</sup>

<sup>1)</sup> Dept. Agroindustrial Technology, University of Lampung, Bandar Lampung, INDONESIA

<sup>2)</sup> Dept. Agricultural Engineering, University of Lampung, Bandar Lampung, INDONESIA

\* Corresponding author. Tel: +62-721-700682, Fax: +62-721-700682

E-mail: [udinha@unila.ac.id](mailto:udinha@unila.ac.id)

### Abstract

Lampung is the biggest contributor for cassava production in Indonesia. Recently, Lampung produced 7.57 million ton of cassava tubers annually and contributed about 34.4% of the national cassava production. Therefore, Lampung is the home for cassava-based industries. There were 76 industries are in operation in Lampung, including four small scale tapioca industries called ITTARA. These industries wasted huge of water having potential to generate biogas through anaerobic digestion process. The objective of this paper was to study greenhouse gas (GHG) emission mitigation of cassava mills in Lampung by using biogas fuel resulted from wastewater treatment. The study evaluated GHG emission from the existing conditions and then calculate GHG emission reduction potential in the processing step by utilization of waste. General life cycle methodology was applied for the evaluation of GHG reduction. Results showed that 2.82 to 4.5 m<sup>3</sup> of waste water were produced for every ton of cassava being processed. The waste water was characterized by high organic matter with an average COD of 18,000 mg/L. During waste water treatment, biogas was estimated at around 26 m<sup>3</sup> per ton cassava with methane content of 56.2 vol.%. The study also revealed that utilization of biogas may replace a part of diesel fuel used in the cassava mills and therefore potentially reduces GHG emission. Assuming that 80% of cassava production was processed directly in cassava mill, it can be showed that total biogas energy potential throughout Lampung Province was equivalent to 87.4 million liters diesel fuel per year. This quantity will reduce GHG emission about 1.32 million tons of CO<sub>2</sub> equivalent per year.

**Keywords:** Biogas, Greenhouse gas, Emission, Cassava mill, Mitigation.

### 1. Introduction

Lampung is the biggest contributor for cassava production in Indonesia. Recently, Lampung produced 7.885 million ton of cassava tubers annually and contributed about 36% of the national cassava production (Table 1).

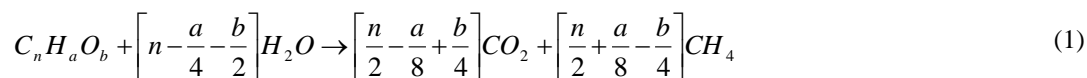
Table 1. Harvesting area, production and yield of cassava in Lampung as compared to Indonesia

Year	LAMPUNG <sup>a)</sup>			INDONESIA <sup>b)</sup>		
	Area (Ha)	Yield (Ku/Ha)	Production (Ton)	Area (Ha)	Yield (Ku/Ha)	Production (Ton)
2005	252 984	190.00	4 806 254	1 213 460	159.00	19 321 183
2006	283 430	194.00	5 499 403	1 227 459	163.00	19 986 640
2007	316 806	201.86	6 394 906	1 201 481	166.36	19 988 058
2008	318 969	242.09	7 721 882	1 204 933	180.57	21 756 991
2009	320 344	246.15	7 885 116	1 205 440	182.43	21 990 381

Source: a) Lampung Dalam Angka (2010)  
b) BPS (2010)

Therefore, Lampung is the home for cassava-based industries. Most industries, both big industries and some people-managed small industries known as ITTARA (IndustriTepungTapioka Rakyat), directly processed cassava tubers into cassava starch (tapioca). Few industries converted cassava into ethanol. Other industries requiring cassava in a significant amount are feed industries.

The tapioca industries release huge amount of waste water characterized by high organic matter and high COD (chemically oxygen demand). Anaerobic decomposition of organic matter produces biogas with composition of 50 – 70% CH<sub>4</sub>; 25 – 45% CO<sub>2</sub>; and trace of nitrogen, hydrogen, hydrogen sulfide. For a complete reaction, the decomposition can be presented as:



From equation (1), it can be demonstrated that 0.35 m<sup>3</sup> of CH<sub>4</sub> can be produced for every kg of COD (chemically oxygen demand). If methane is released to the atmosphere it will contribute significantly to global warming since CH<sub>4</sub> having high green house effect (21 times of CO<sub>2</sub>) so that its existence should be reduced (Rodhe, A.L., 1990). The CH<sub>4</sub>, however, is combustible and, therefore, can be utilized as fuel to replace diesel fuel used in the factory given that gas is produced and collected appropriately.

The purpose of this study is to estimate potential for GHG mitigation by using biogas fuels resulted from waste water treatment.

## 2. Methodology

The method used in this research included literature study, field survey, field measurement, and laboratory testing. Literature from other researches, industries, and government institutions will be used to dig important information related to the study. Field survey was explored to locate cassava-based industries throughout Lampung Province and to get information on the material balance, waste (type and amount), and waste treatment. Global Positioning System (GPS) tool (GPSMAP 60CSx, Garmin International Inc., USA) was used to geographically locate each industry.

Field measurement was conducted at five industries sampled based on their capacity to determine the amount of raw material flow, waste flow rate, and CH<sub>4</sub> emitted from waste water. The amount of waste water was calculated by using mass balance in the processing steps. Methane emission was captured using floating material made from plastic box of 24 cm width by 60 cm length as depicted by Figure 1. Gas flowrate was measured using wet gas flow meter (WK-NK-0.5B, Shinagawa Corporation, Japan).

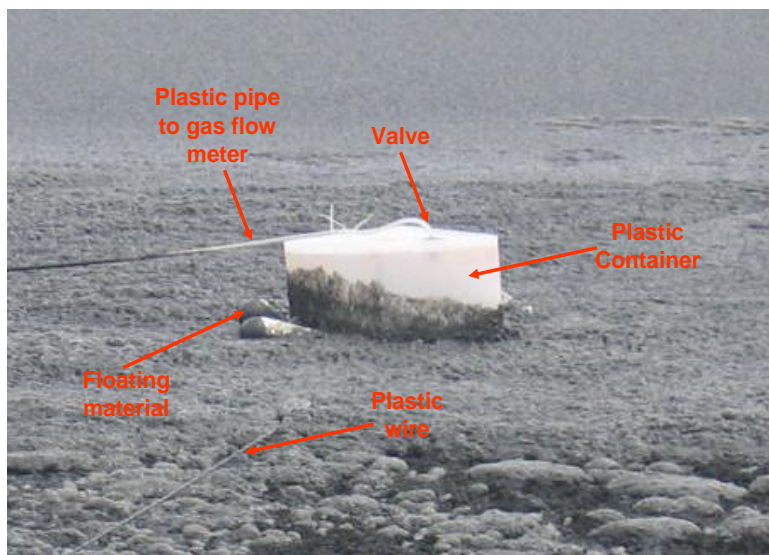


Figure 1. Gas trapping device used to measure CH<sub>4</sub> emission from the water treatment pond in a cassava mill

Laboratory measurement was carried out to characterize waste water and biogas composition. Wastewater properties will be represented by COD, TSS, VSS, pH, temperature values. COD was measured by spectrophotometer (HACH DR4000). Biogas composition was determined using gas chromatograph (GC 2014, Shimadzu).

Biogas production (F<sub>Bio</sub>) was estimated using the following relation:

$$F_{Bio} = \frac{COL \times \eta_{CODr} \times c_f}{\% CH_4} \quad (Nm^3/ton) \quad (2)$$

Where COL is COD load (kg/ton of cassava tuber),  $\eta_{\text{CODr}}$  is COD removal efficiency, % CH<sub>4</sub> is methane fraction in the biogas (vol.%), and cf is conversion of COD to CH<sub>4</sub> (Nm<sup>3</sup>/kg COD removed). Theoretically, 0.35 Nm<sup>3</sup> of methane can be produced for every kg of COD removed. In this case, however, we used 0.3 as a realistic value.

GHG emission reduction potential (GER) was calculated using the following relation:

$$\text{GER} = \text{GER}_{\text{CH}_4} + \text{GER}_{\text{fuel or el}} \quad (3)$$

where GER<sub>CH<sub>4</sub></sub> is GHG emission reduction due to CH<sub>4</sub> combustion and GER<sub>fuel or el</sub> is GHG emission reduction due to replacement of fuel or electricity by biogas utilization.

### 3. Results and Discussion

Our study revealed that there were 71 units cassava-based industries are in operation throughout Lampung Province with a total capacity of 5.2 million ton cassava root annually. Most them (70 units) process cassava into tapioca starch and one unit produces ethanol. Three units of tapioca industries also produced citric acid from their waste. In addition, there were four small scale tapioca industries (called ITTARA) managed by community also run with each processing capacity up to 80 ton cassava per day. Feed industries also demanded cassava in a significant amount (3.5 million tons cassava per annum). Figure 2 shows distribution of cassava-based industries within Lampung Province.

Processing capacity of those industries greatly varied from around 50 tons to 1800 tons cassava tuber per day. Our study at five tapioca industries (Table 2) revealed that tapioca starch yield varied from 23.8 to 25.6 percent of the raw material (cassava root). Cassava variety and machine capacity were amongst other factors affecting the tapioca yield. Presently, there are two varieties of cassava being popular for farmers, namely Kasertsat and Thailand with starch content of 18.15% and 16.99%, respectively. The cassava processing into starch is depicted schematically by Figure 3.

Table 2. Characteristic for selected tapioca industries

	Tapioca Industry Scale				
	small	Big	Big	Big	big
Cassava root consumption (ton/day)	80	600	750	800	1800
Tapioca production (ton/day)	20.5	150	187.5	190	450
Water consumption (m <sup>3</sup> /day)	400	2,640	3,750	3,420	7,713
Water Index (m <sup>3</sup> /ton tapioca)	19.5	17.6	20.0	19.7	17.1
Energy source	Grid	Grid and self	Grid and self	Grid and self	Grid and self
Energy consumption per ton tapioca:					
Electricity (kWh)	NA	193.5	207.4	197.1	NA
Diesel fuel (L)	NA	NA	37.05	36.98	34.47
Wastewater production (m <sup>3</sup> /day)	395.4	1,690.0	2,112.5	3,629.5	5,713.9
(m <sup>3</sup> /ton raw material)	4.94	2.82	2.82	4.54	3.17

It can be seen from Table 2 that in average 199.3 kWh electricity and 36.2 liters of diesel fuel was required to produce one ton tapioca starch. It can also be showed that tapioca yield varied slightly from 23.8 to 25.6 weight percent with an average value of 24.9%.

Cassava processing consumed huge amount of water (4.3 to 5 m<sup>3</sup> per ton of cassava root). As a result, the process also produces a lot of wastewater (2.82 to 4.94 m<sup>3</sup>/ton). The wastewater was high in organic matter as characterized by high COD content (Table 3). The pH value of wastewater from separator section in this research (6.0) was high enough compared to our previous study which was 3.8 – 4.5 (Hasanudin *et al.*, 2007). This difference implied that location influenced the pH of wastewater exited from cassava mills.



Figure 2. Distribution of cassava mills (yellowed square with number inside) in Lampung Province. (Sampling location was indicated by red star)

Table 3. Characteristic of wastewater produced from tapioca industries in Lampung

Wastewater source	pH	Temperature (°C)	DO (mg/L)	COD (mg/L)	BOD <sub>5</sub> (mg/L)
Wastewater from separator	6.0	29.6	6.62	20,433	11,466
Wastewater from washing	7.7	30.4	2.36	2.015	1.132

Based on the results, we have calculated the potential of GHG mitigation in the cassava industries due to utilization of biogas. The results showed that the amount of biogas potentially generated from waste water treatment was 28.83 m<sup>3</sup> per ton of cassava roots being processed. Biogas sampled from five cassava mills indicated methane fraction of 56.2% (by volume) as presented in Table 4. With this value, it meant that biogas had energy value of 20.08 MJ/Nm<sup>3</sup> which was equivalent to 0.52 L of diesel fuel. Every ton of cassava was able to generate biogas energy equivalent to 15.0L of diesel fuel. With average tapioca yield of 24.9 % (by weight), this meant that biogas was able to replace all of diesel fuel (166%) or all electric power (113%) used in the mill assuming that efficiency for biogas fired power plant was 35% (Eurelectric, 2003). The calculation used data and factors presented in Table 5.

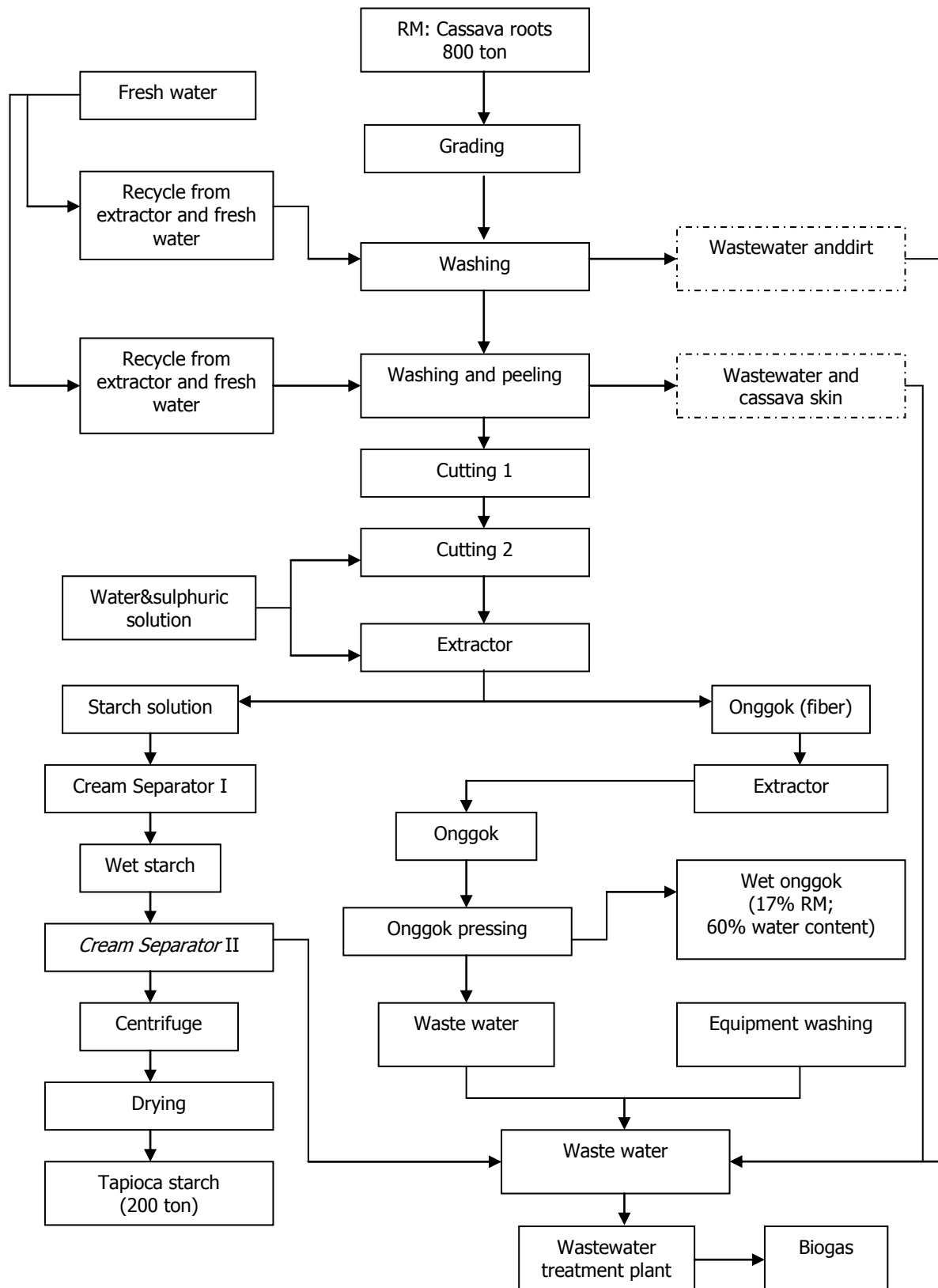


Figure 3. Flow chart for typical cassava processing to produce tapioca starch



Table 4. Biogas composition (% volume) produced from wastewater treatment in tapioca industries

Biogas Composition	Tapioca Industry Scale					Average
	small	Big	Big	Big	big	
Methane (CH <sub>4</sub> )	54.36	60.47	55.97	52.38	57.89	56.21
Carbon dioxide (CO <sub>2</sub> )	35.64	33.63	42.08	42.62	37.89	38.37
Nitrogen (N <sub>2</sub> ) and others*	10.00	5.90	1.95	5.00	4.22	5.41

\*) by difference

Tabel 5. GHG emission reduction potential in cassava-based industries in Lampung Province

Data, factor, calculation	Unit	Quantity	Remark
<b>DATA</b>			
Cassava production	ton/year	7,569,178	
Total capacity of entire mills in Lampung	ton/year	5,200,000	
Wastewater (average)	m <sup>3</sup> /ton cassava	3.66	
Fuel consumption in cassava mill	L/ton	36.62	
Electric consumption in cassava mill	kWhe/ton	199.3	
COD value of wastewater	kg/m <sup>3</sup>	20.43	
COD removal efficiency	%	82	
<b>FACTOR</b>			
GHG factor for diesel fuel combustion	kg-CO <sub>2</sub> e/L	2.92	Lal (2004)
GHG factor for coal power plant	kg-CO <sub>2</sub> e/kWhe	1.03	West, T.O. and Marland, G. (2002)
GHG factor for petroleum power plant	kg-CO <sub>2</sub> e/kWhe	0.96	West, T.O. and Marland, G. (2002)
Coal power plant efficiency	%	35.2	Grauset <i>al.</i> (2007)
Petroleum power plant efficiency	%	38 – 44	Eurelectric(2003)
Biogas power plant efficiency	%	30 – 40	Eurelectric(2003)
Energy value of methane	MJ/m <sup>3</sup>	35.7	Calculated from www.chemeurope.com
<b>CALCULATION</b>			
Biogas production	m <sup>3</sup> /ton cassava	28.83	
Biogas production throughout Lampung	m <sup>3</sup> /year	149,926,518	
Methane (CH <sub>4</sub> ) component in the biogas	% volume	56.21	
Energy value of biogas	MJ/m <sup>3</sup>	20.07	
Biogas equivalent to diesel fuel	L/m <sup>3</sup>	0.52	
Total diesel fuel equivalent from biogas	L/year	77,976,847	
Potential GHG reduction due to CH <sub>4</sub> combustion	ton-CO <sub>2</sub> e/year	1,264,105	
Potential GHG reduction due to fuel replacement	ton-CO <sub>2</sub> e/year	227,613	
Potential GHG reduction due to electricity replacement	ton-CO <sub>2</sub> e/year	302,566	
Total potential GHG emission reduction	ton-CO <sub>2</sub> e/year	1,491,718 to 1,566,671	

With a total capacity 5.2 million ton of cassava tubers for entire mills in Lampung, it can be demonstrated that biogas energy potential generated from wastewater in cassava-based industries throughout Lampung Province was 150 million m<sup>3</sup>, equivalent to 78 million liter of diesel fuel, per year. Combustion of biogas will save CH<sub>4</sub> emission to the atmosphere at amount of 1.264.165 ton of CO<sub>2</sub> equivalent per year. In addition, the use of biogas may replace 78 million liter diesel fuel per annum. If the biogas is used to replace a part of diesel fuel, it will eliminate another GHG emission of 227,613 ton CO<sub>2</sub> equivalent per year. In case that biogas is used to replace electricity purchased from coal fired power plant, then it will remove 302,566 ton CO<sub>2</sub> per year. In total, generating and utilizing biogas at cassava mills throughout Lampung Province potentially reduces GHG emission by 1,491,718 to 1,566,671 ton CO<sub>2</sub> equivalent per year.

#### 4. Conclusions

The main conclusion of the study is in the following:

1. Anaerobic digestion of wastewater in cassava mills potentially produce biogas energy equivalent to 78 million liter diesel fuel per annum.
2. Biogas produced from wastewater treatment in cassava mills may replace entire diesel fuel (166%) or entire electric power (113%) used in the mills.
3. The potential reduction of GHG emission due to biogas utilization in cassava mills 1,491,718 to 1,566,671ton CO<sub>2</sub> equivalent per year.

#### 5. Acknowledgement

Valuable data were received from sample mills that were not willing to be mentioned. Authors greatly acknowledge the supports. The views expressed in this article, however, are solely those of the authors' responsibility.

#### References

- BPS (Badan Pusat Statistik) Provinsi Lampung, (2010) *Lampung Dalam Angka 2009 - Lampung in Figure 2009*.
- BPS (Badan Pusat Statistik), (2010) *Statistik Indonesia 2009*.
- EURELECTRIC, (2003) *Efficiency in electricity generation*. Report. 30 pages.
- Graus, W.H.J., Voogt, M. and Worrell, E. (2007) 'International comparison of energy efficiency of fossil power generation', *Energy Policy*, Vol. 35, pp. 3936–3951.
- Hasanudin, U., Suharyono, S.A., Nawansih, O., Erna, M., Utomo, T.P. and Sarkowi, M. (2007) *Inventarisasi Potensi Energi Terbarukan Berbasis Air Limbah Agroindustri Di Provinsi Lampung (in Bahasa Indonesia)*, Lembaga Penelitian Universitas Lampung, Bandar Lampung.
- [http://www.chemeurope.com/lexikon/e/Heat\\_of\\_combustion](http://www.chemeurope.com/lexikon/e/Heat_of_combustion), accessed at December 10, 2007.
- Lal, R. (2004), 'Carbon emission from farm operations', *Environment International*, Vol. 30, pp. 981–990.
- Rodhe, A.L. (1990) 'A comparison of the contribution of various gasses to the greenhouse effect', *Science*, Vol. 248, pp. 1217–1219.
- West, T.O. and Marland, G. (2002) 'A synthesis of carbon sequestration, carbon emissions, and net carbon flux in agriculture: comparing tillage practices in the United States', *Agriculture, Ecosystems and Environment* Vol. 91, pp. 217–232.